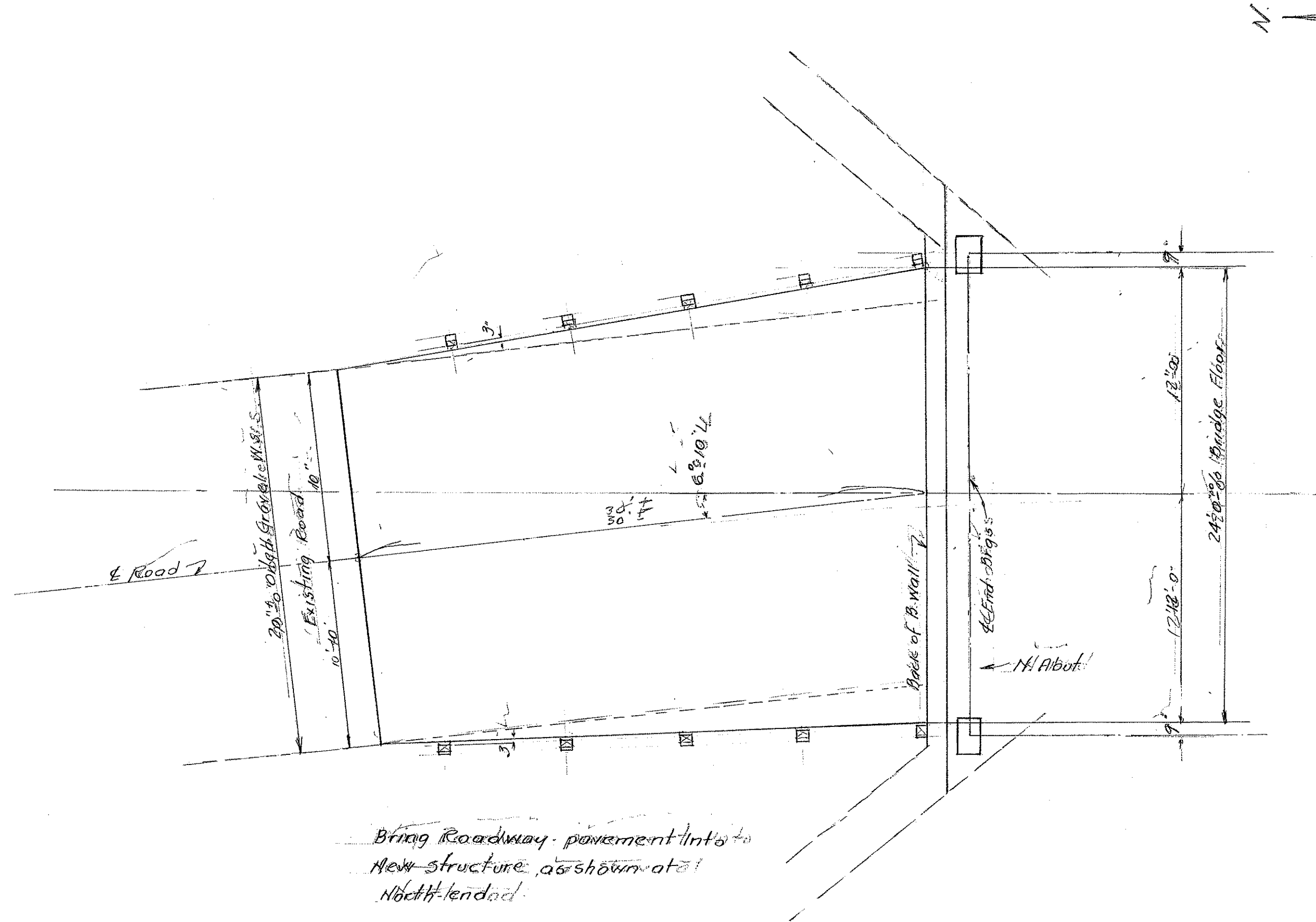
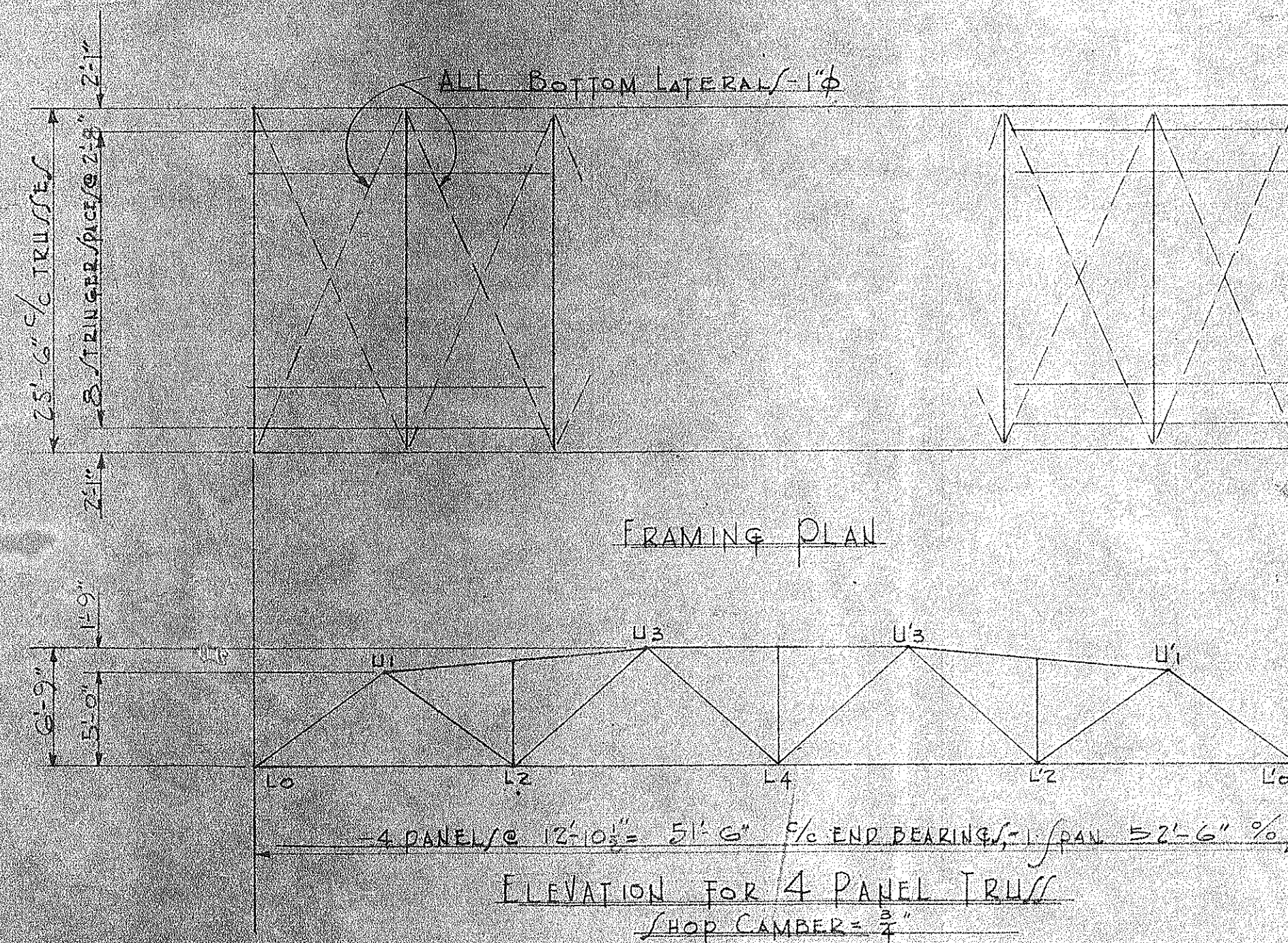
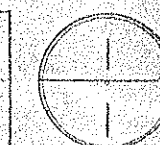


STARK COUNTY, OHIO			
STARK CO. BRIDGE		NO PE - 6-15	
RECONSTRUCTION DETAILS.			
OVER NEWMAN CREEK ON			
3 RD ST. N.W. MASSILLON			
PERRY TWP.			
DESIGNED	DRAWN	CHECKED	REVIEWED
	J.P.H. 1/15/53		



STARK COUNTY, OHIO			
STARK CO. BRIDGE		NO PE-6-15	
N. APPROACH LAYOUT.			
OVER NEWMAN CREEK ON			
3RD ST. N.W. MASSILLON			
PERRY TWP.			
DESIGNED	DRAWN	CHECKED	REVIEWED
	JRH. 1/14/53		



STRESSES AND SECTIONS										
MEMBER	D.L.	L.L.	IMPACT	TOTAL	DESIGN STRESS	ALLOW. UNIT STRESS	COMPUTED UNIT STRESS	SECTION		
U1-L0	+34.2	+53.9	+15.4	+103.5	+112.8	20.9	19.0	12WF31		
U1-U3	+46.7	+61.5	+17.6	+125.8	+204.9	21.6	19.4	12WF40		
U3-U5	+54.5	+71.9	+20.5	+146.9	+239.3	22.0	20.3	12WF40		
L0-L2	-26.8	-34.1	-10.0	-70.9	-117.0	27.0	19.4	12C20.7		
L2-L4	-47.8	-57.9	-16.5	-122.2	-193.6	27.0	22.1	12C30		
U1-L2	-25.3	-39.9	-11.4	-76.6	-127.9	27.0	21.1	12WF27		
U3-L2	+2.5	+24.0	+7.9	+34.4	+99.5	20.9	12.5	12WF27		
U3-L4	+11.5	+32.4	+10.7	+54.6	+113.5	27.0	17.1	12WF27		
VERTICALS	Nominal							12WF31		
FLOOR BEAM	MAXIMUM DESIGN MOMENT	551.4	K (OVERLOAD)					27WF94		
	MAXIMUM DESIGN HEAD	96.2	K							
STRINGER	MAXIMUM DESIGN MOMENT	88.4	K					12WF31		
TRUSS REACTION	21.4	33.8	9.7	64.9						

GENERAL NOTES:

LEGEND: (+) COMPRESSION
(-) TENSION
MOMENTS IN FT. KIP (K)
STRESSES IN KIPS (K)

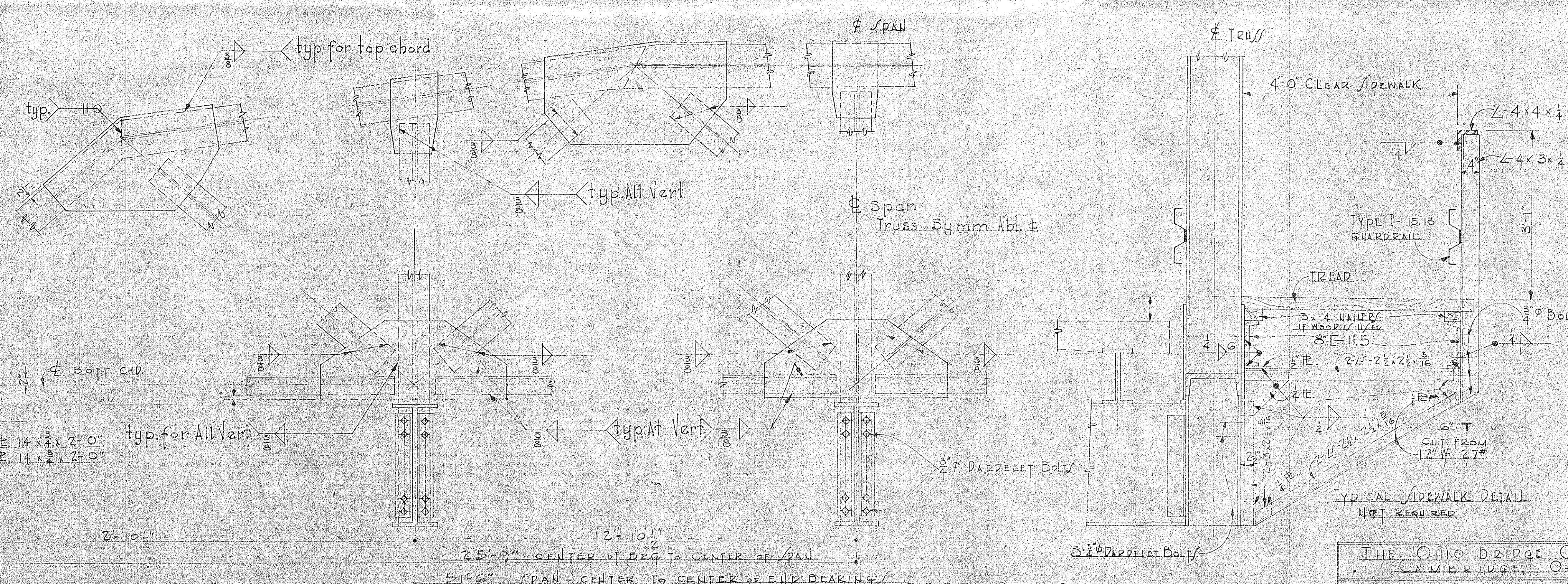
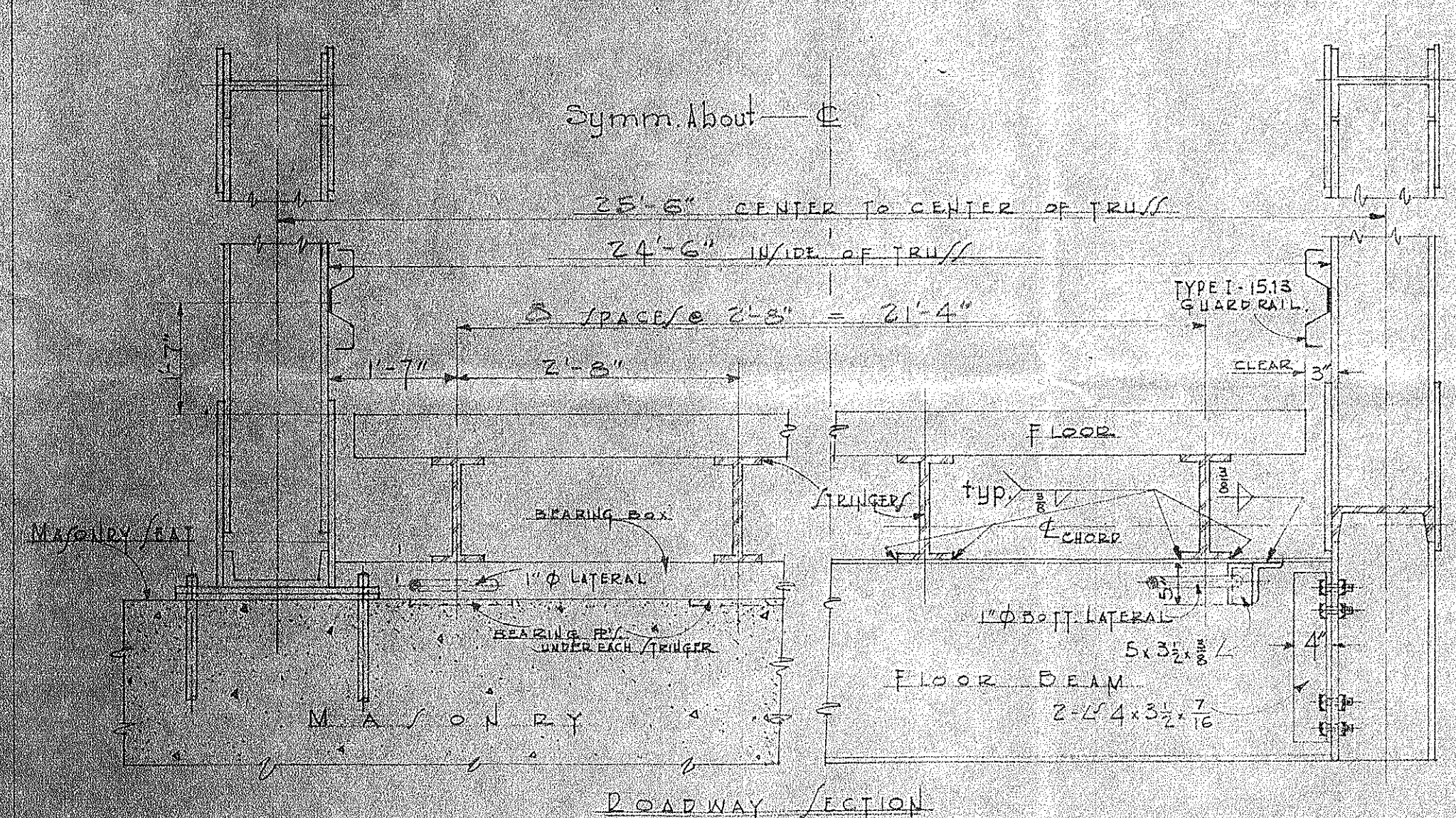
SPECIFICATIONS:

STATE OF OHIO DEPT. OF HIGHWAY
DESIGN SPEC. FOR HIGHWAY STRUCTURES (OCT. 1-1951)
CONSTRUCTION AND MATERIAL SPEC. (JAN. 1-1951)

LOADING: - S-15-46

ROADWAY DECK: - 10 GA. COR. STL.

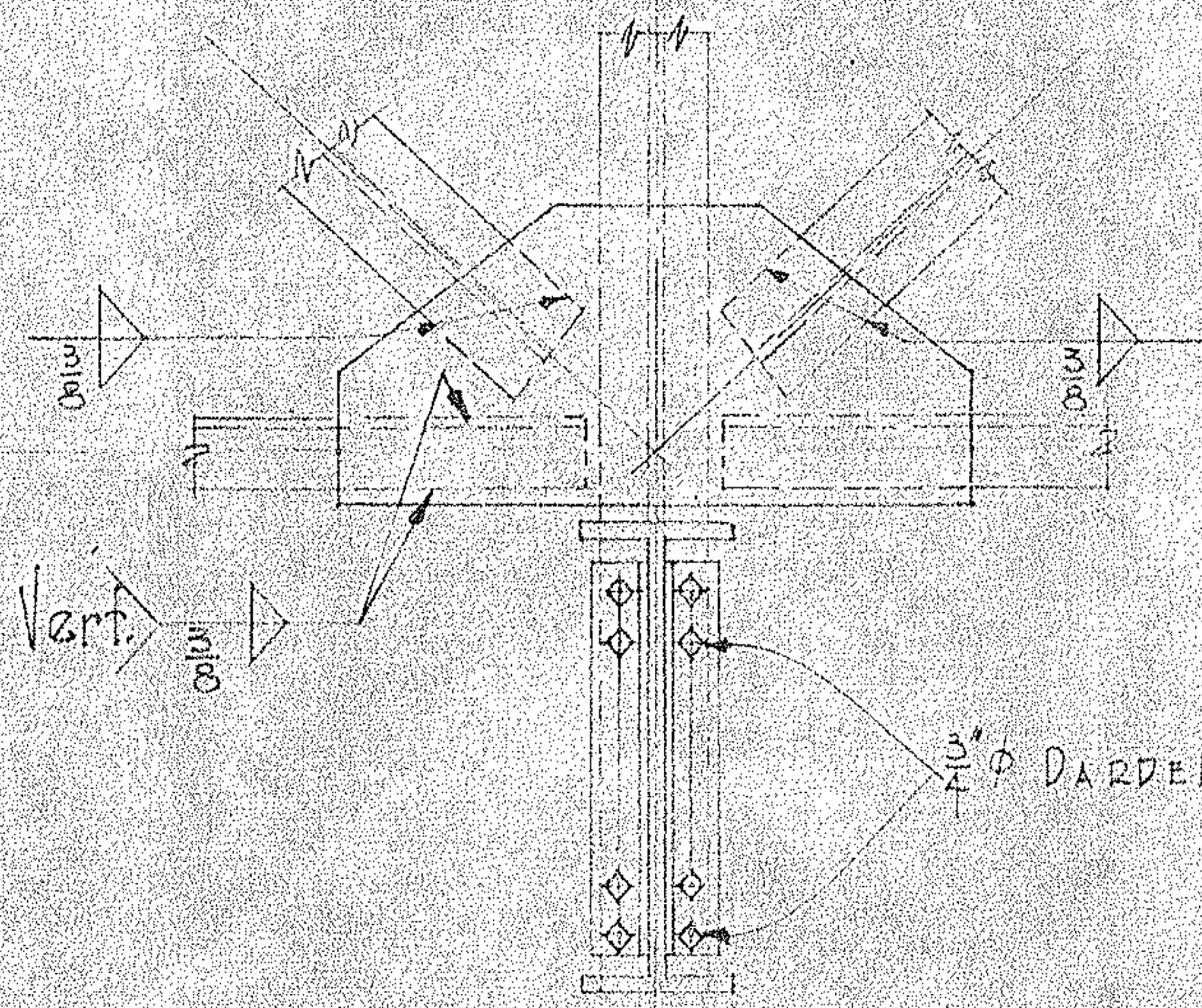
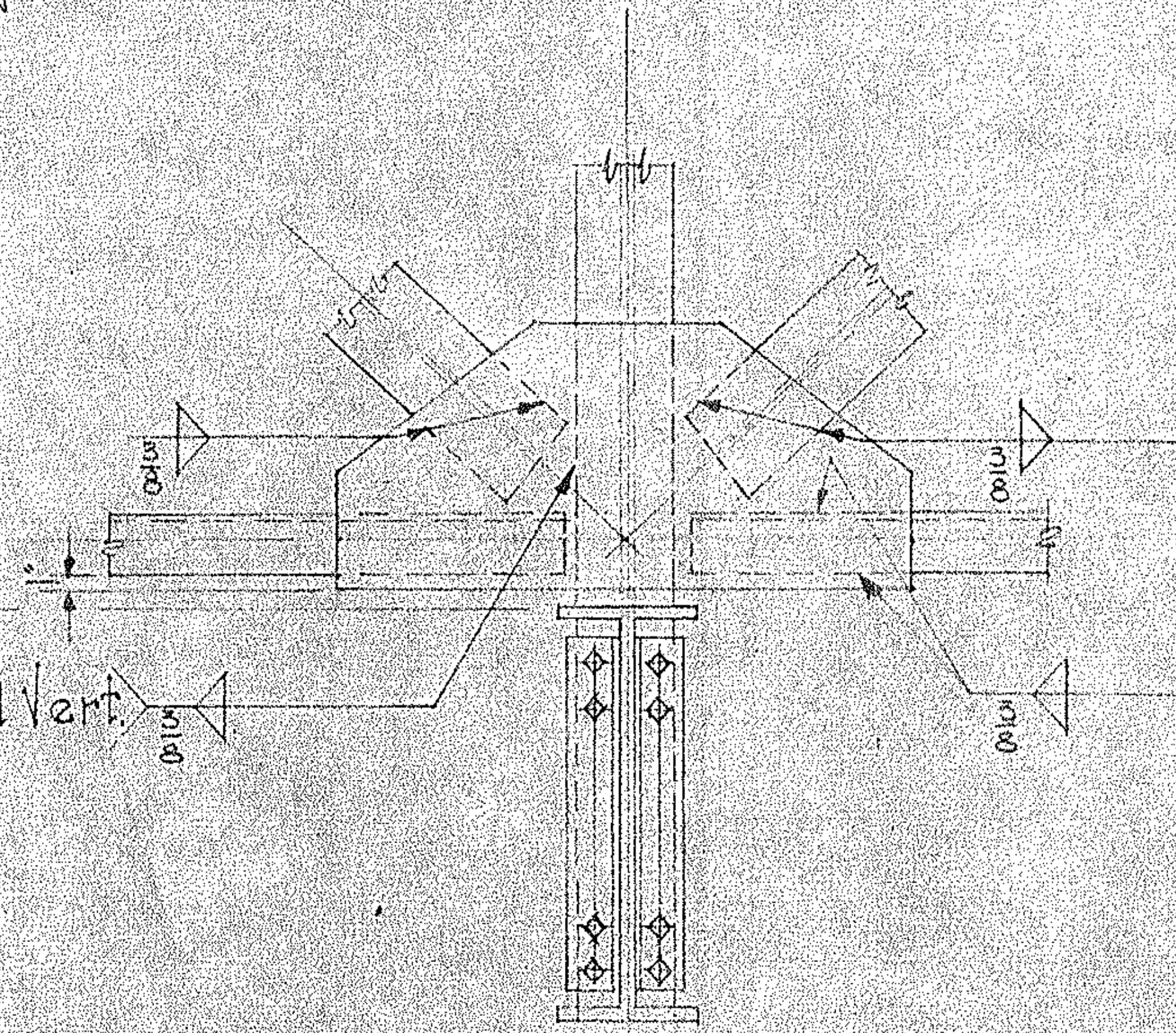
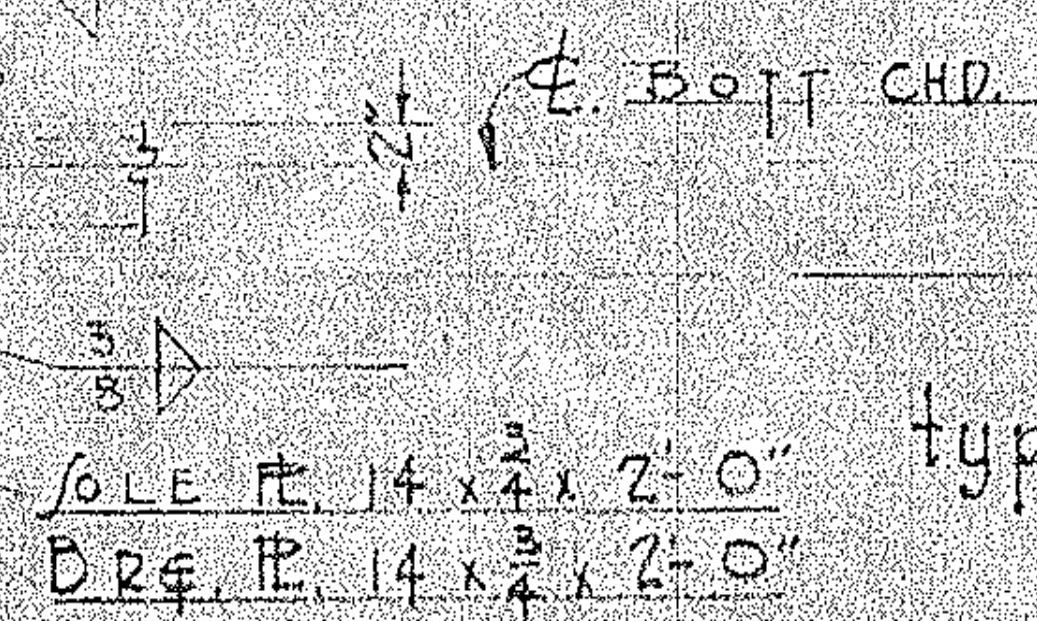
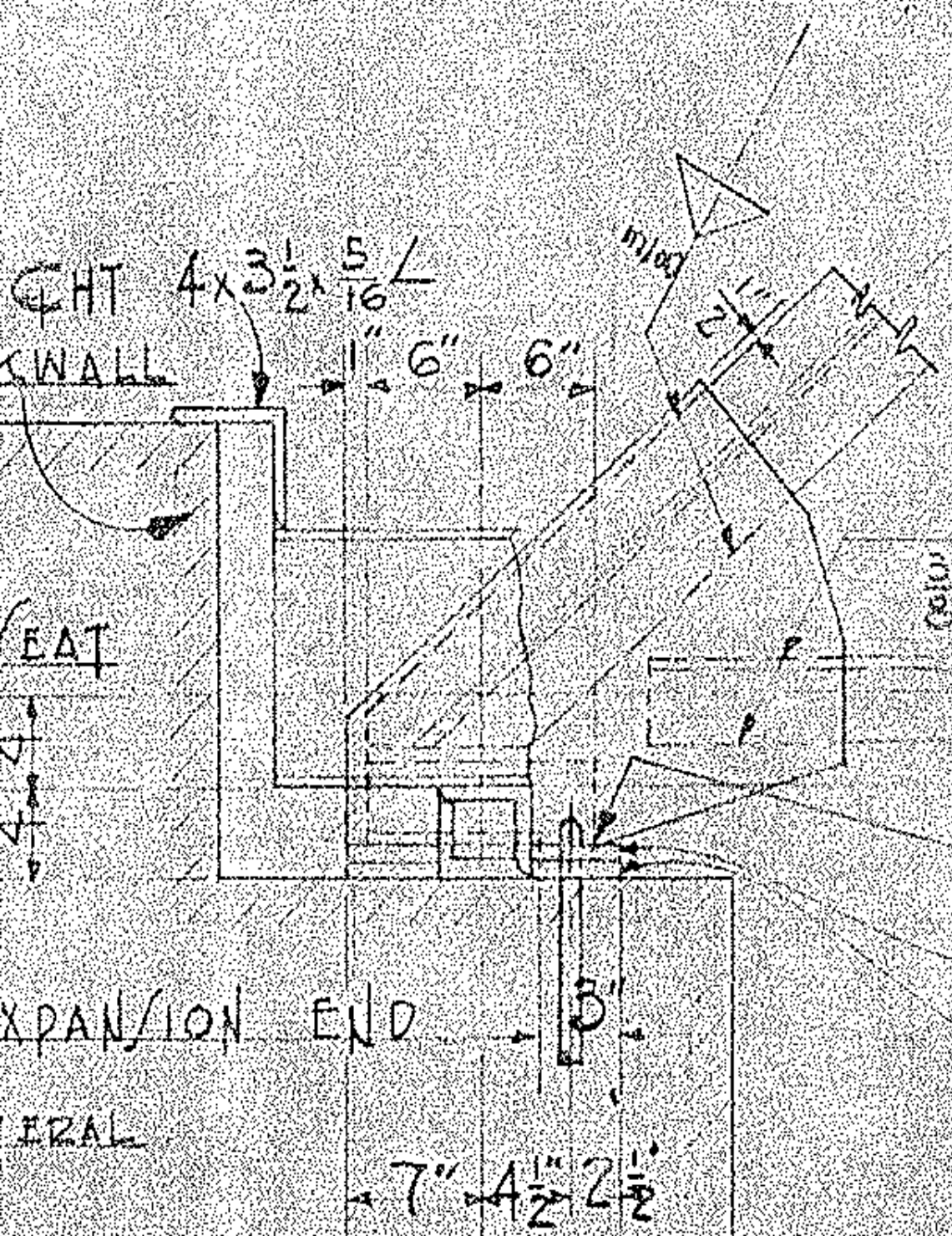
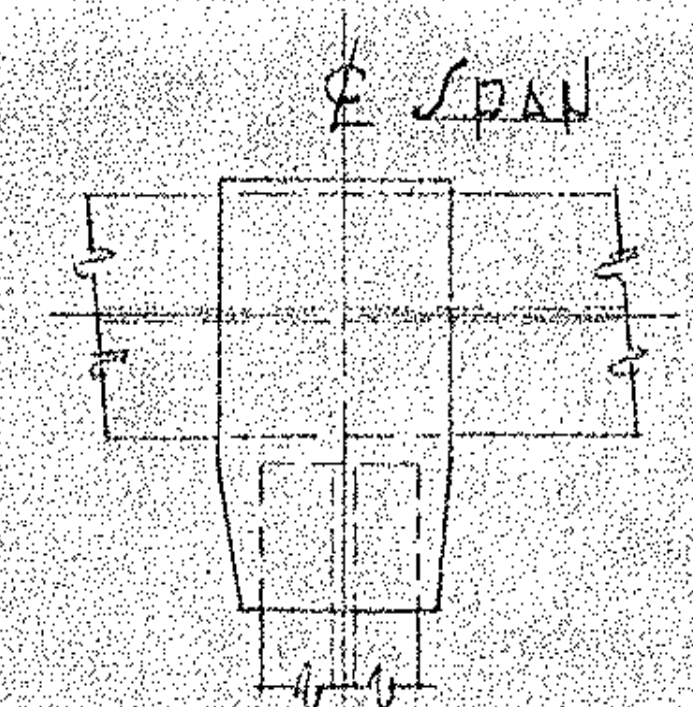
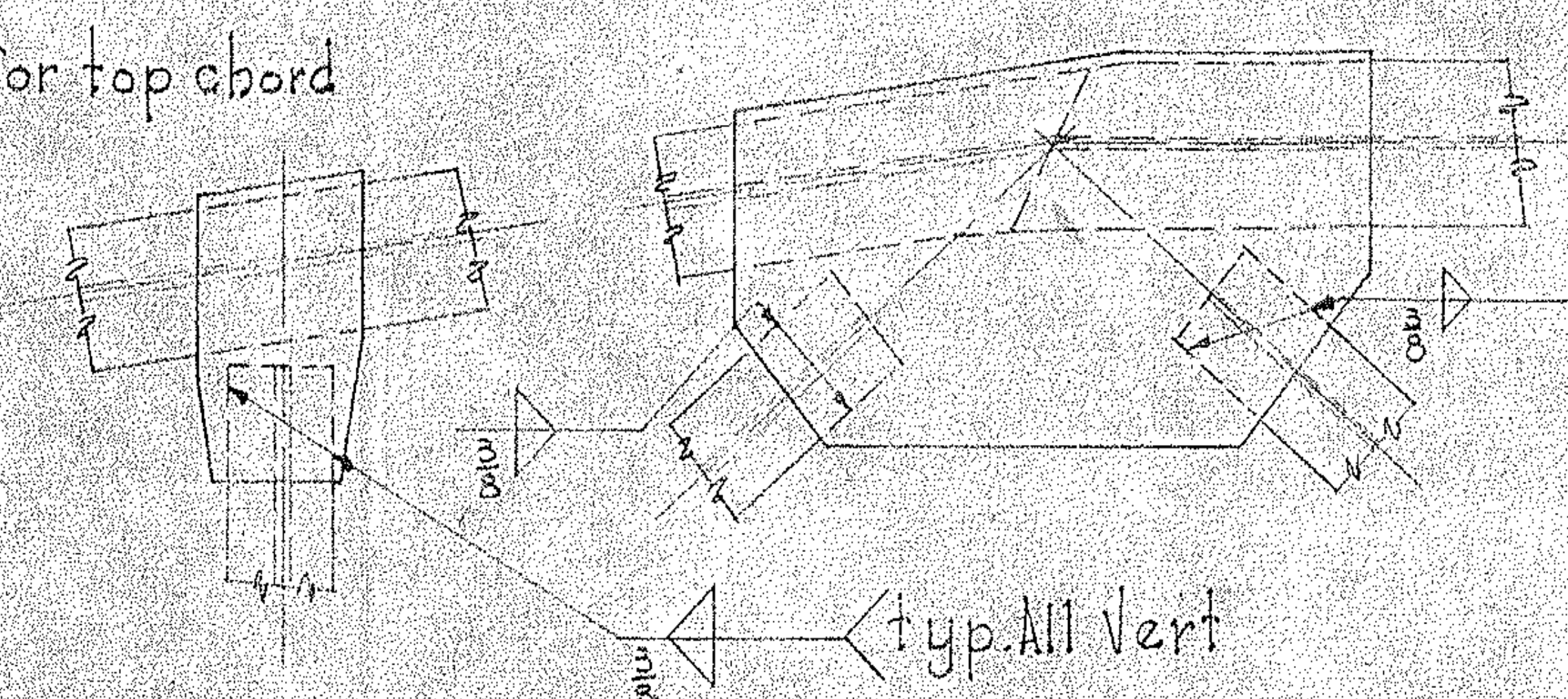
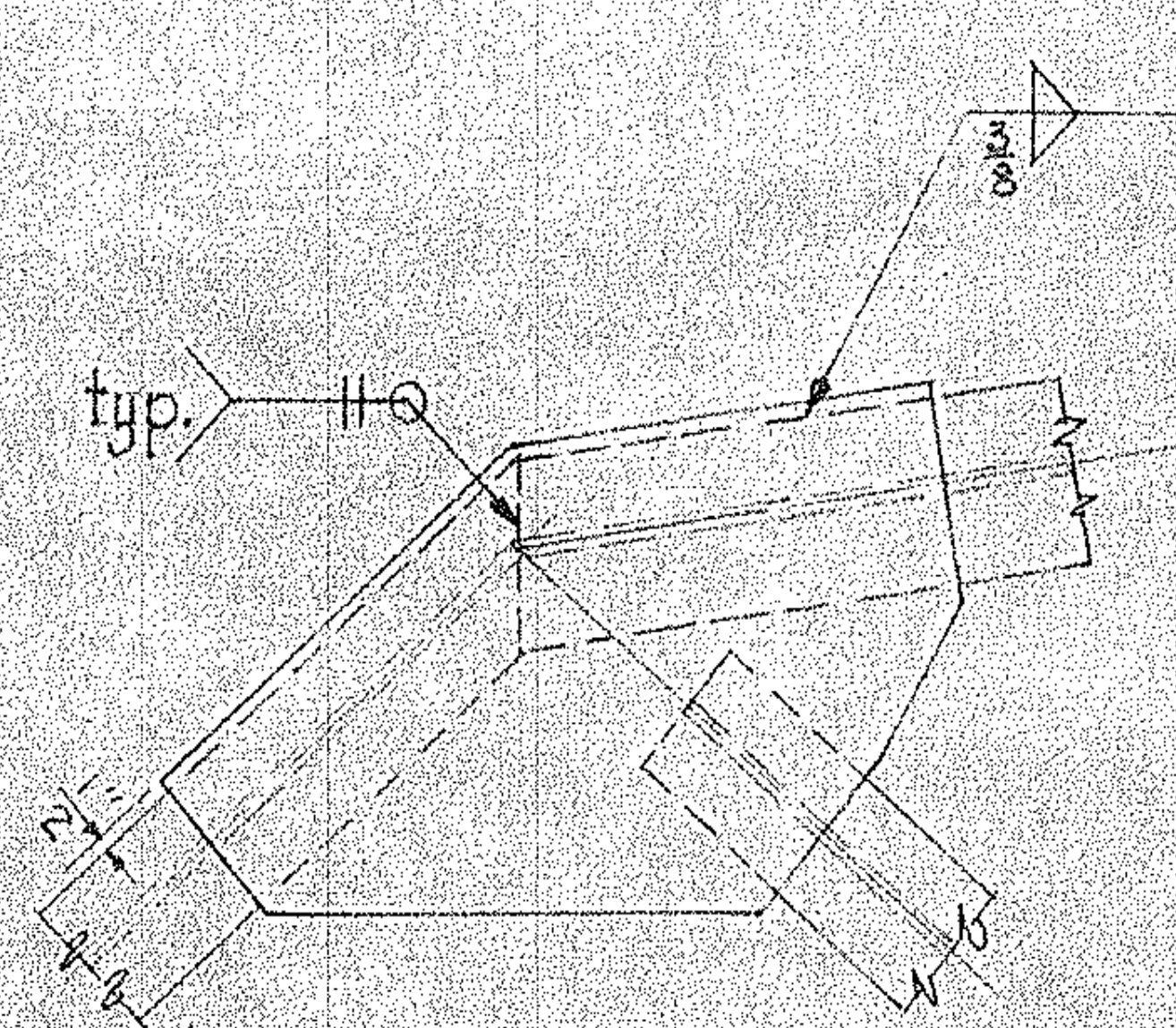
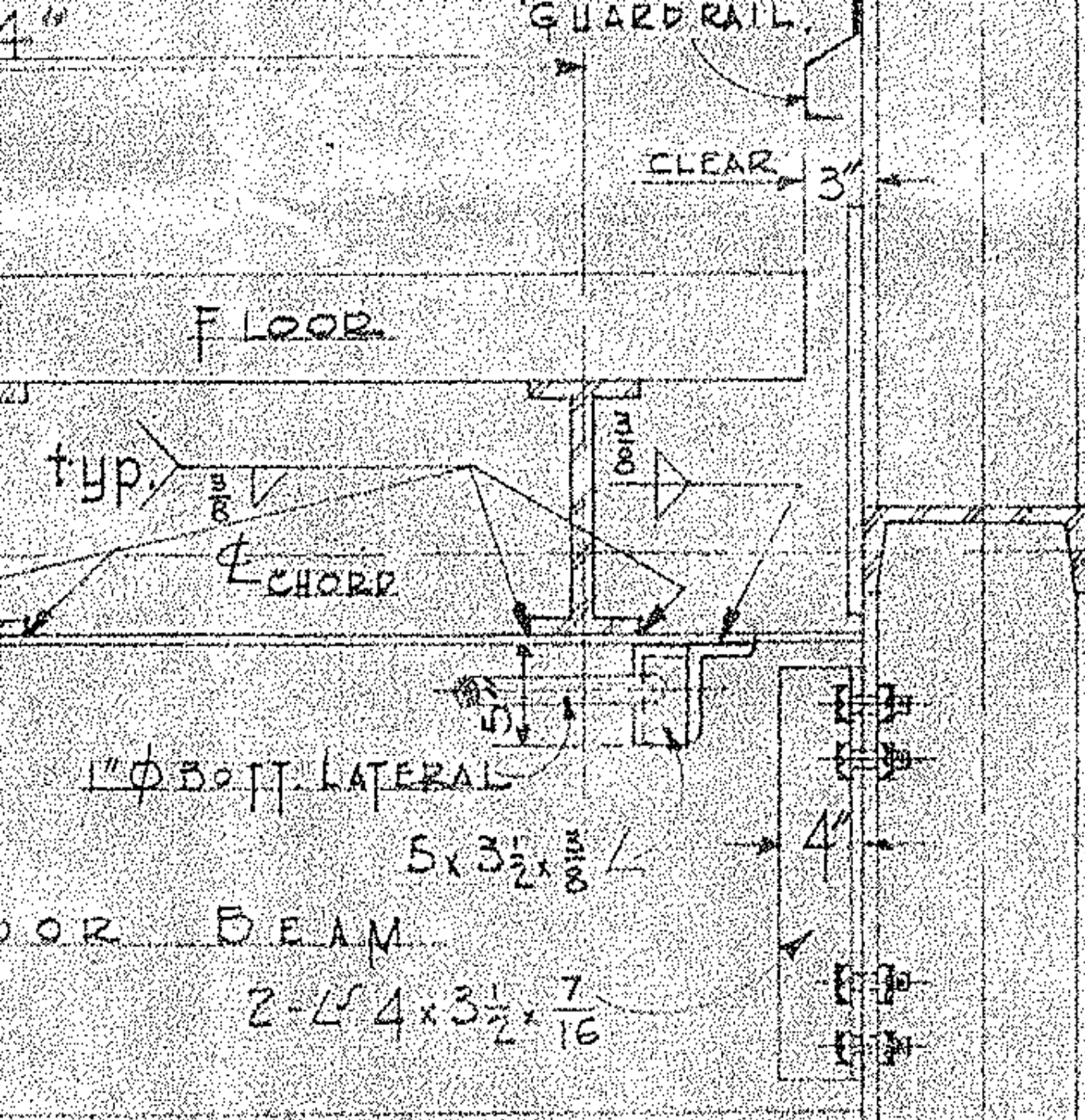
WELDING TO BE CLASS "A"



TYPICAL DETAILS FOR WELDED TRUSS BRIDGE

ALL GUSSET PL. 3" THICK
EXCEPT AS NOTED

THE OHIO BRIDGE CORPORATION
CAMBRIDGE, OHIO
4-PANEL TRUSS DETAILS
SPAN 52'-6", ROADWAY 24ft. CLEAR
BRIDGE No. PE-615
OVER
COUNTY OF STARKE, OHIO
MASSILLON, OHIO
DESIGNED BY H. R. G. V. L.
DATE 3-1-53
DRAWING NUMBER 1042-15-502



E BEARING

12'-10 1/2"

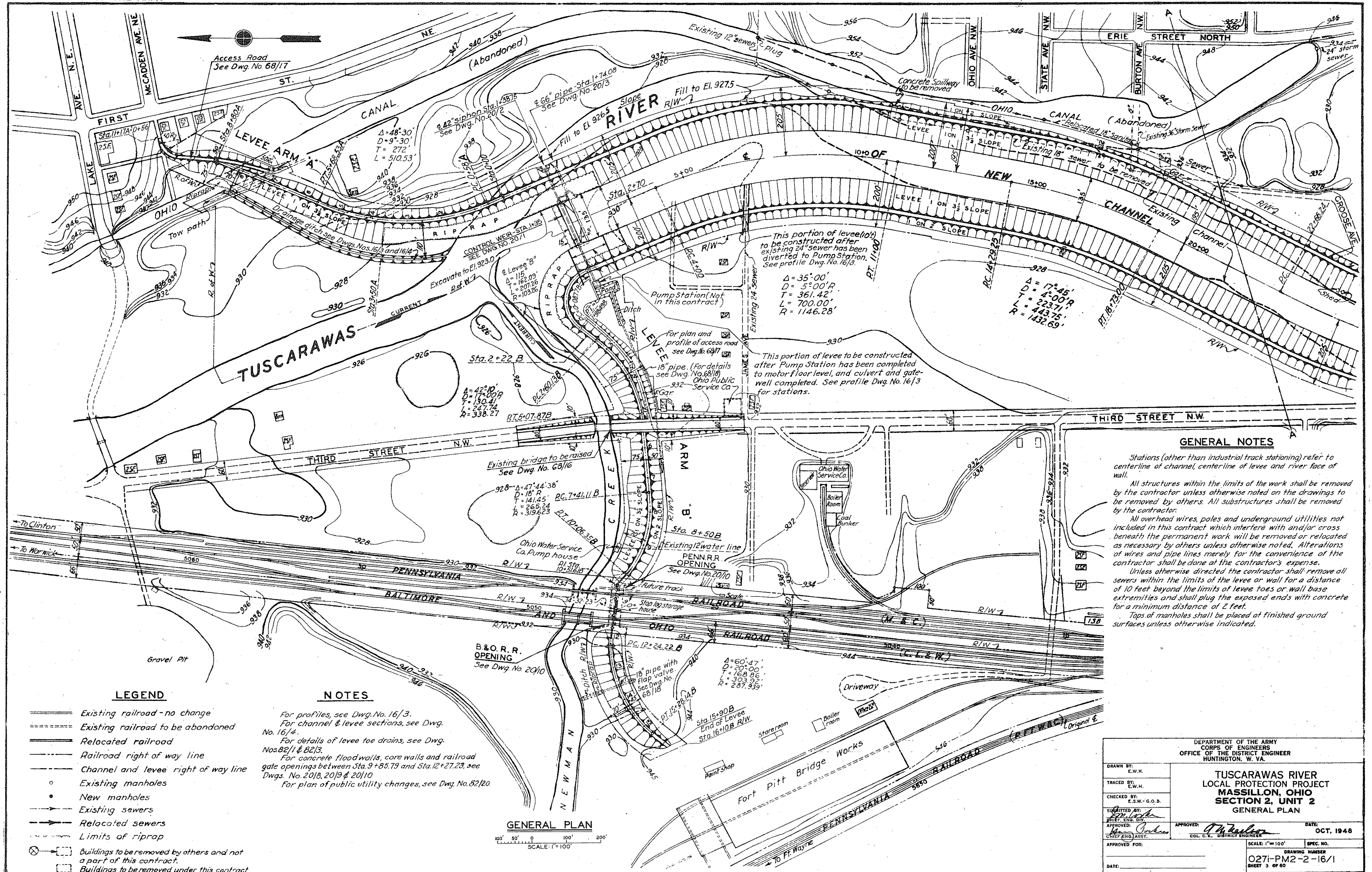
12'-10 1/2"

25'-9" CENTER OF BRG TO CENTER OF SPAN

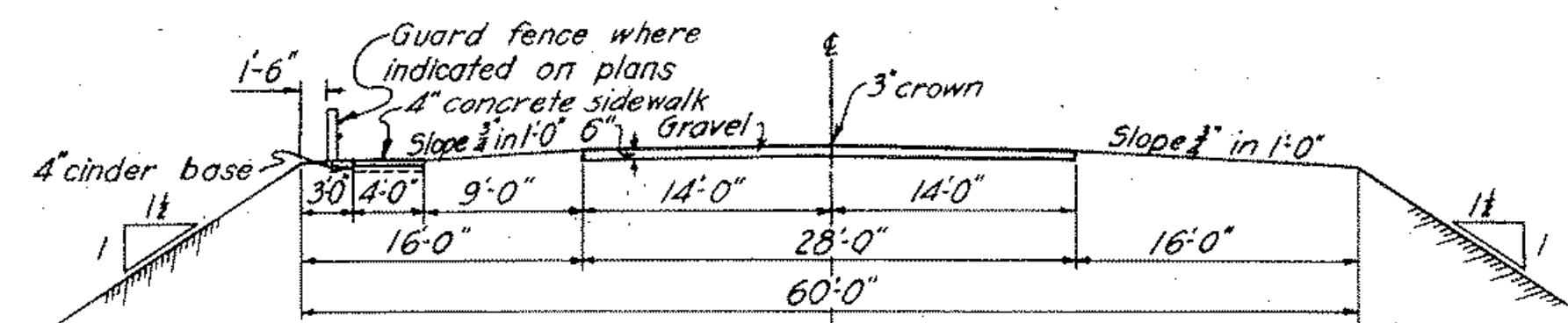
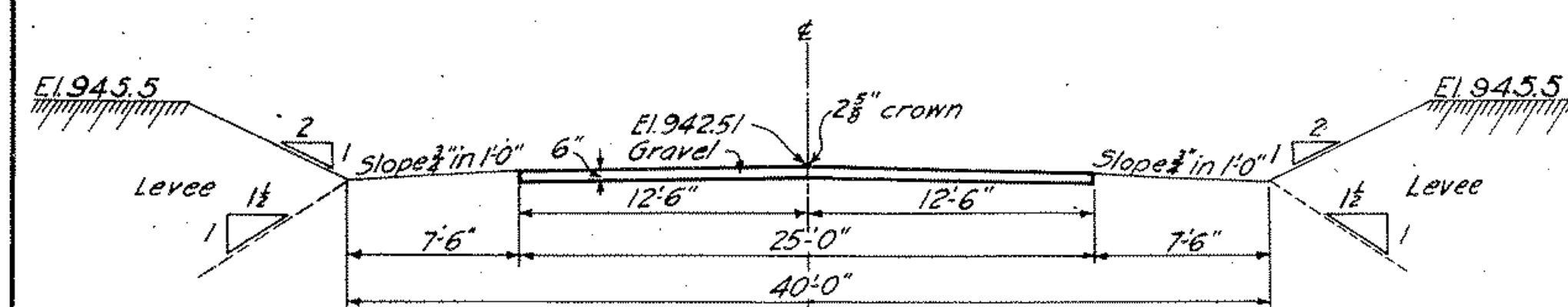
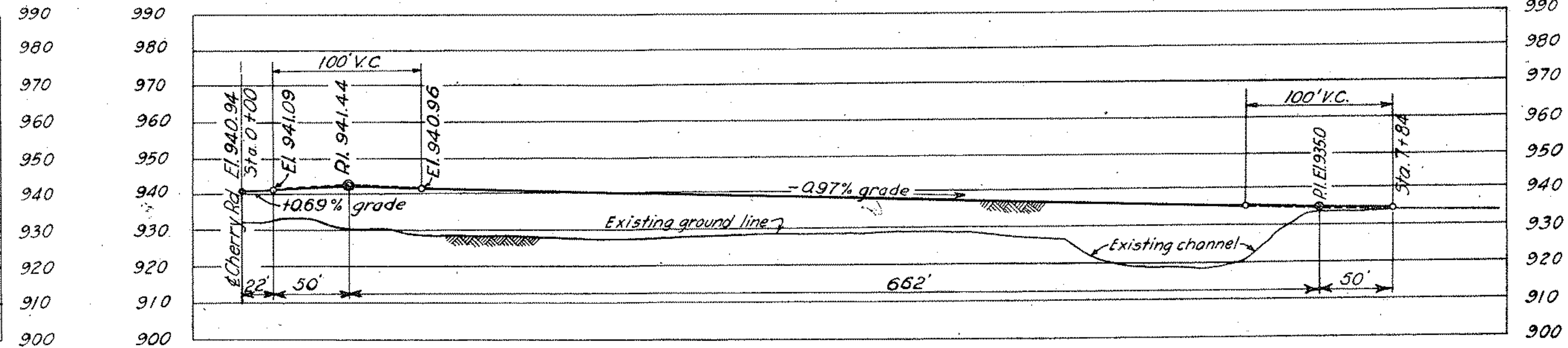
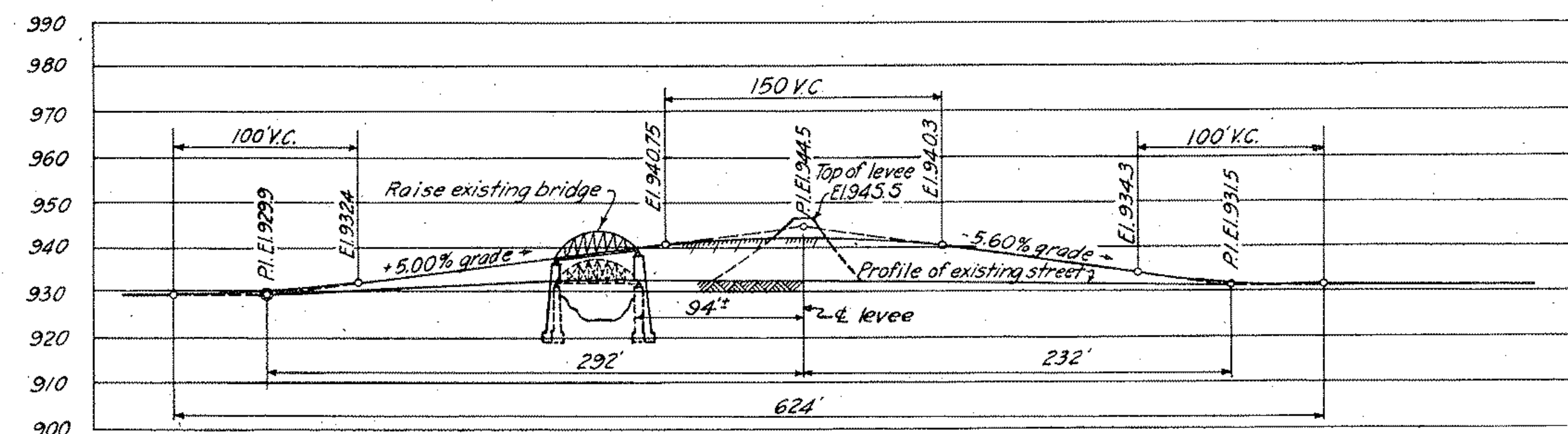
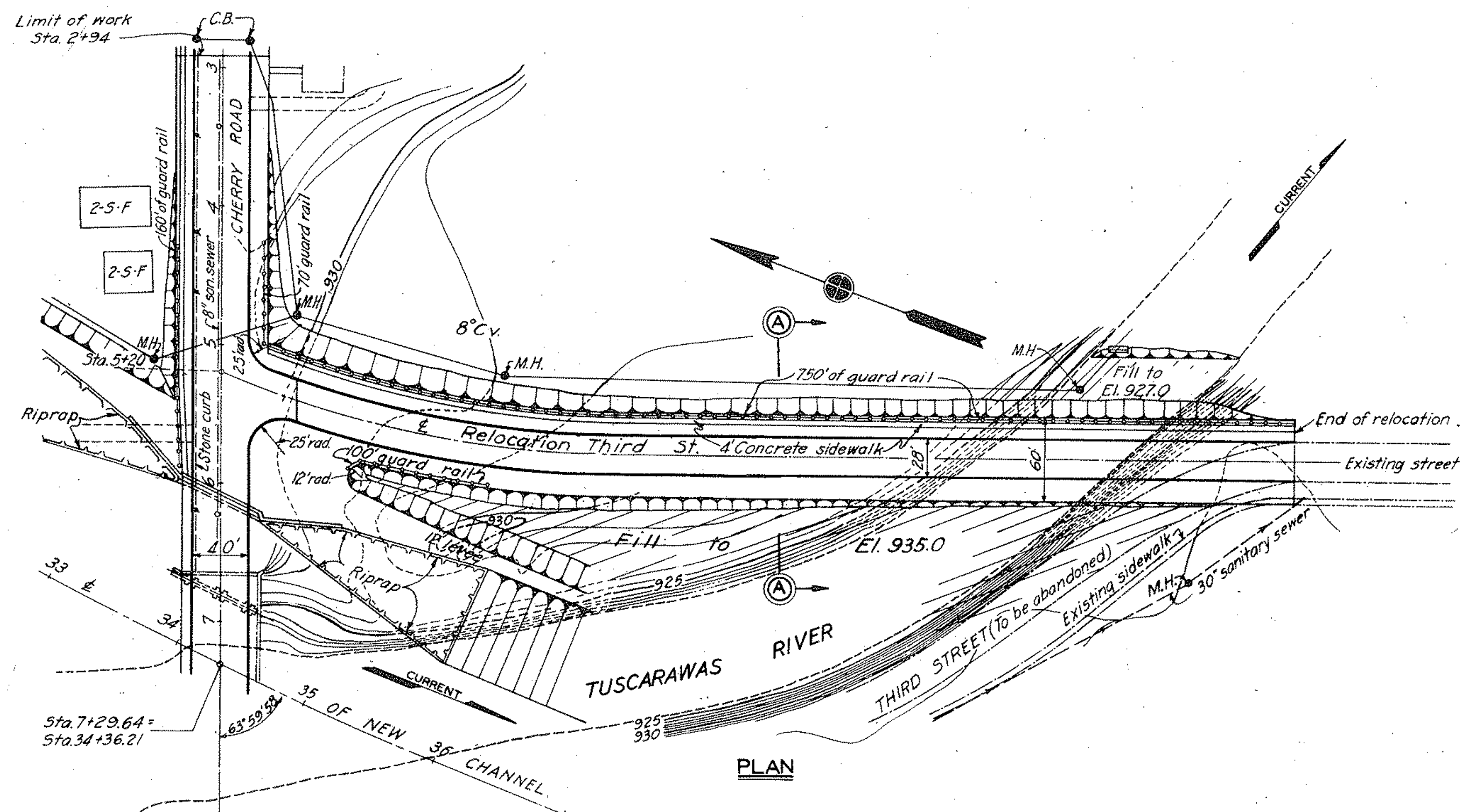
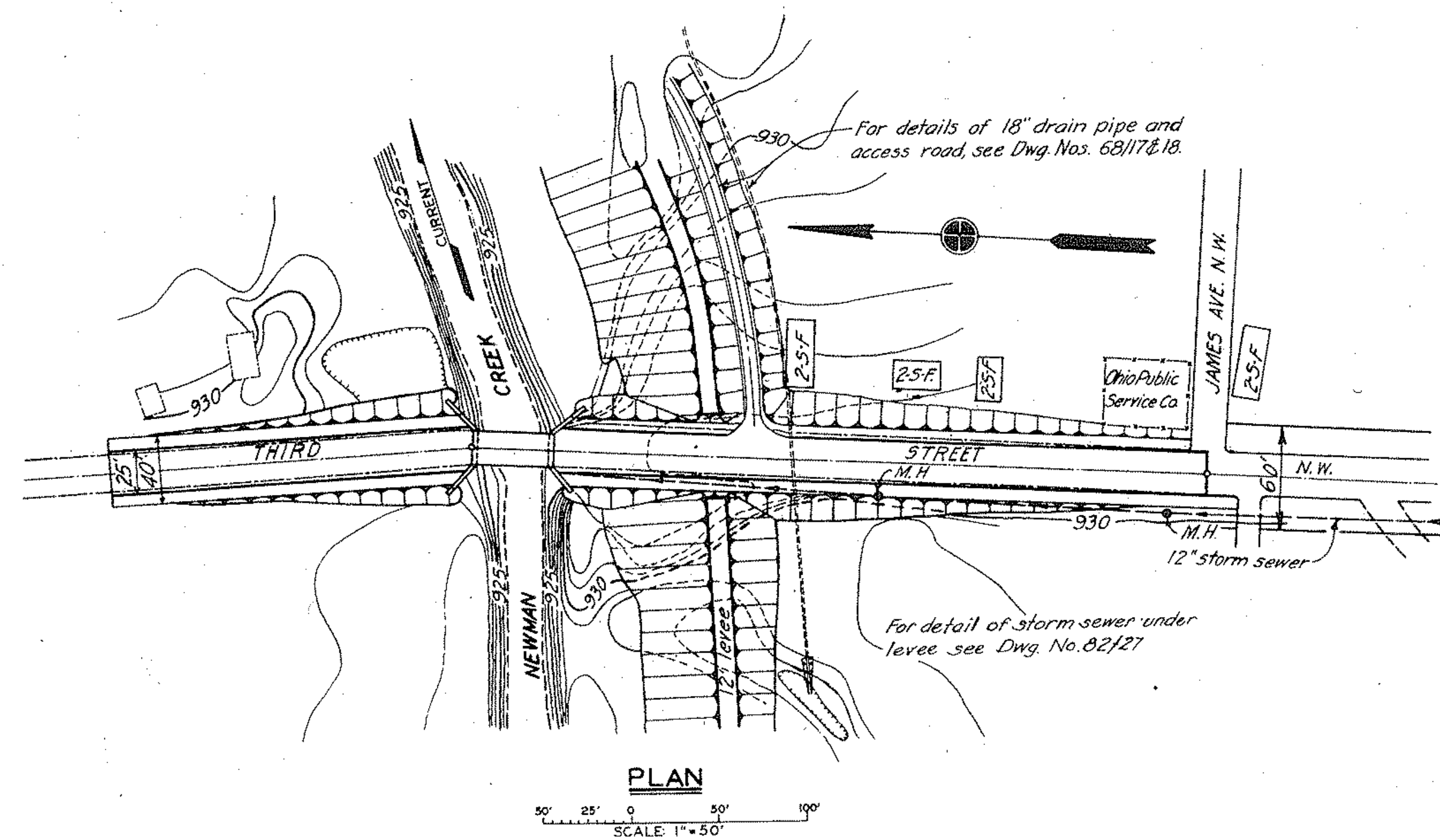
51'-6" SPAN - CENTER TO CENTER OF END BEARING

TYPICAL DETAILS FOR WELDED TRUSS BRIDGE

ALL GUSSET PL'S 3" THICK
EXCEPT AS NOTED



DEPARTMENT OF THE ARMY CORPS OF ENGINEERS OFFICE OF THE DISTRICT ENGINEER HUNTINGTON, W. VA.		TUSCARAWAS RIVER LOCAL PROTECTION PROJECT MASSILLON, OHIO SECTION 2, UNIT 2 GENERAL PLAN	
DRAWN BY: E.W.H.	TRACED BY: E.W.H.	CHECKED BY: E.S.W.-G.O.S.	SUBMITTED BY: E.S.W.-G.O.S.
APPROVED BY: [Signature]	APPROVED BY: [Signature]	DATE: OCT. 1948	SCALE: 1" = 100'
APPROVED FOR: [Signature]	DATE: OCT. 1948	DRAWING NUMBER: 0271-PM2-2-16/1	SHEET: 3 OF 60



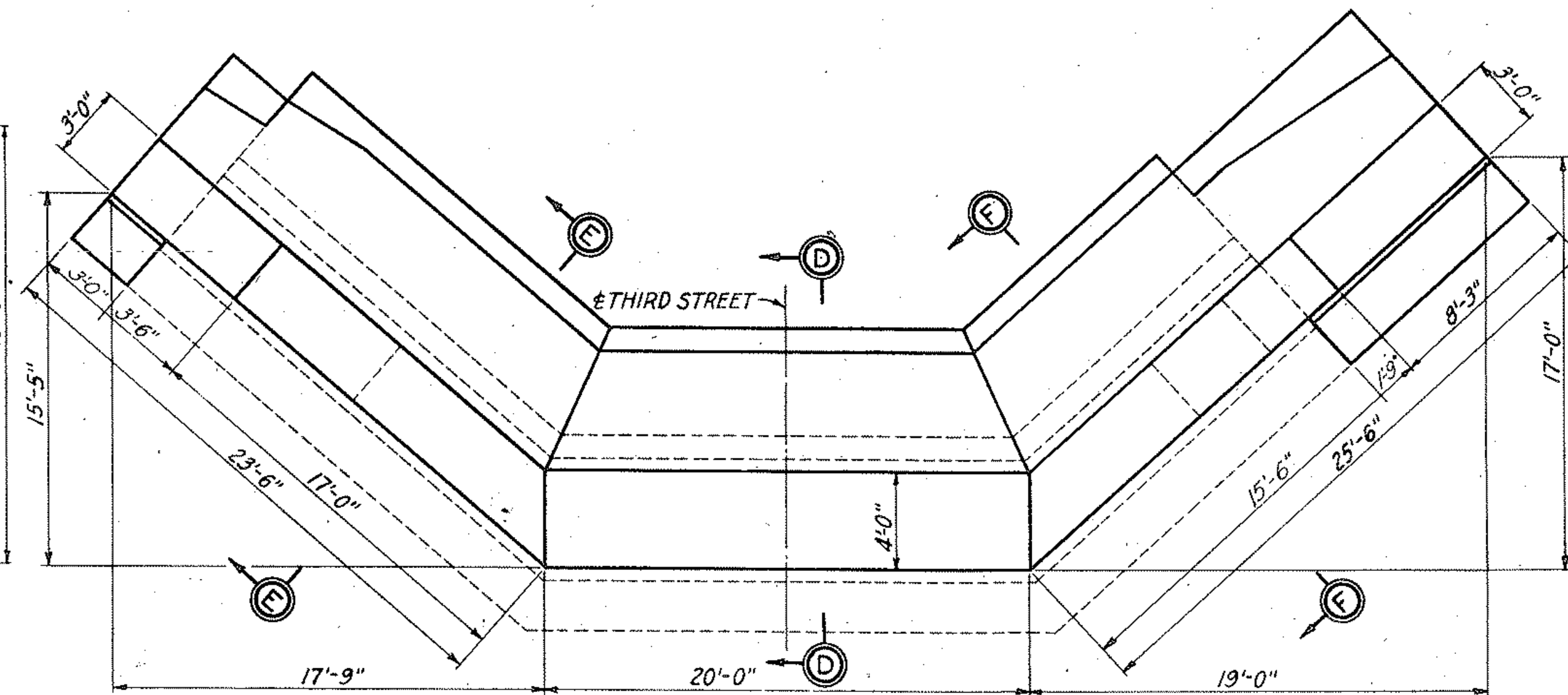
THIRD STREET BRIDGE OVER
NEWMAN CREEK

THIRD STREET RELOCATION AT
CHERRY ROAD

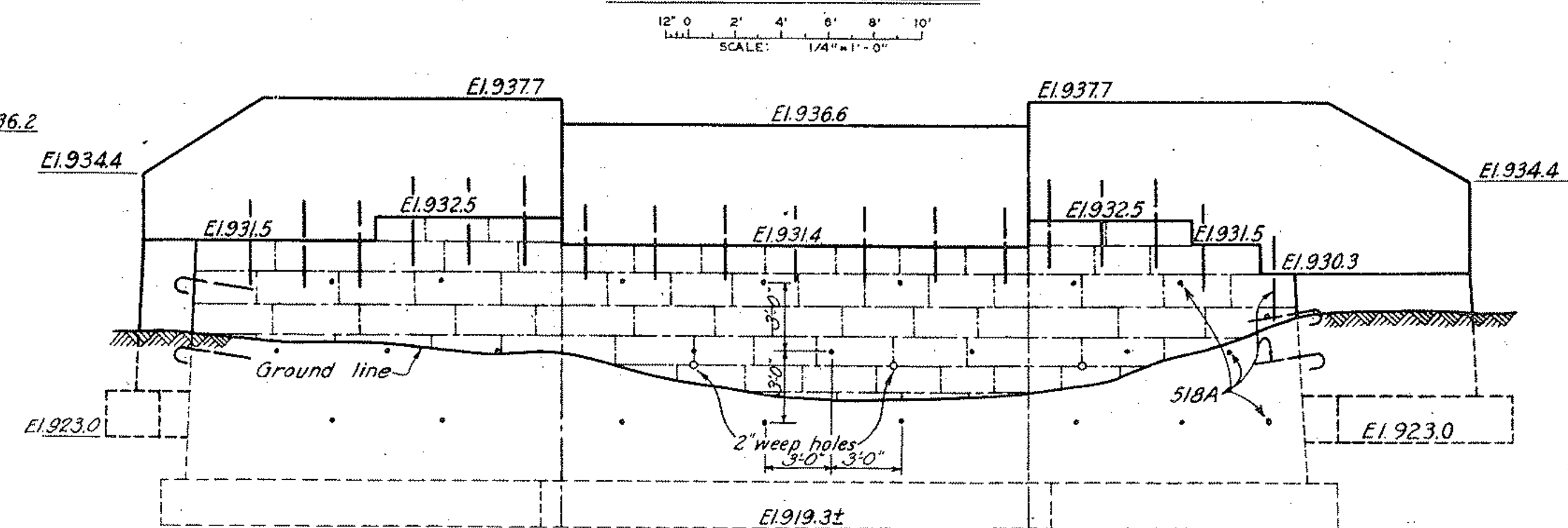
NOTES

For details of raising Third Street bridge over Newman Creek, see Dwg. No. 68/16.
For Cherry Road Viaduct General Plan and Profile, see Dwg. No. 68/1.
For general plans, see Dwg. Nos. 16/1 and 16/2.
For details of pavement return at Cherry Road, see Dwg. No. 68/17.
For details of guard rail, see Dwg. No. 68/8.

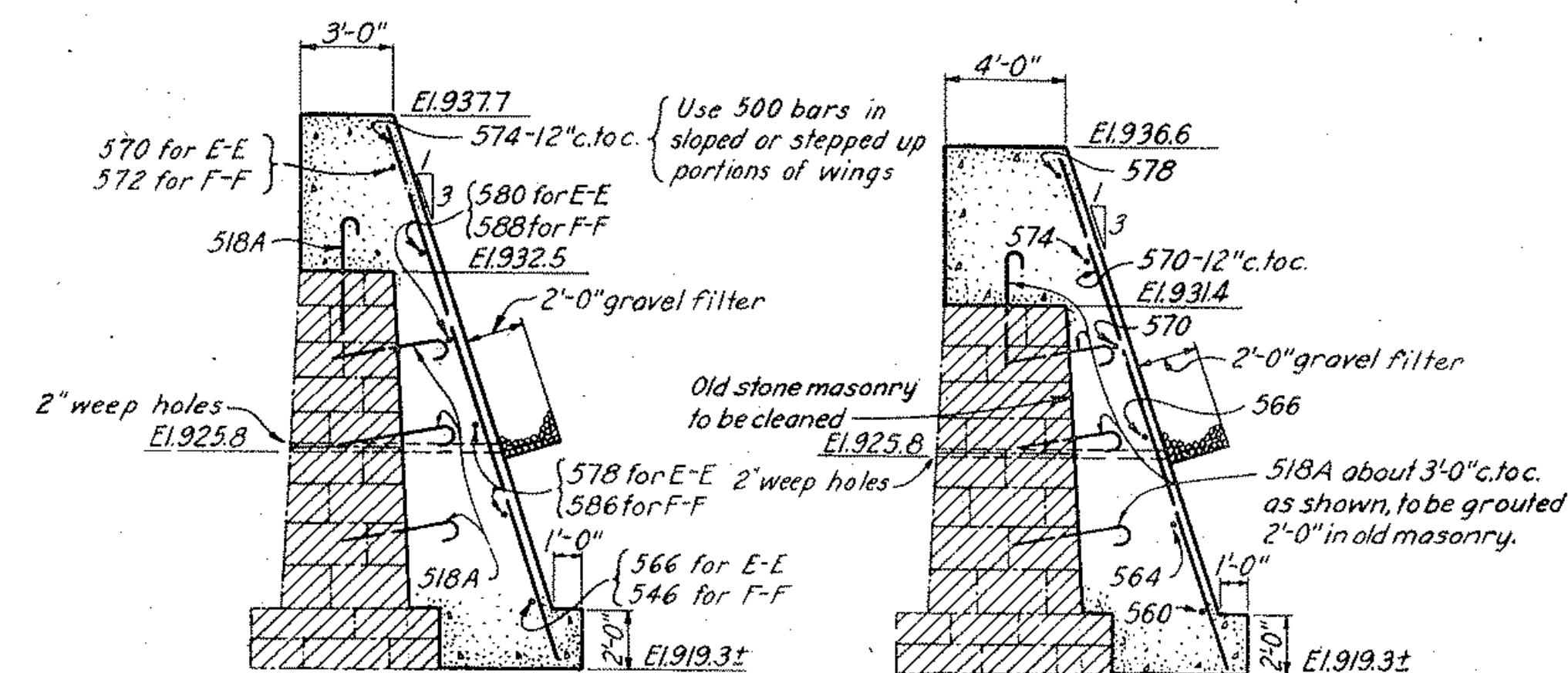
DEPARTMENT OF THE ARMY CORPS OF ENGINEERS OFFICE OF THE DISTRICT ENGINEER HUNTINGTON, W. VA.		TUSCARAWAS RIVER LOCAL PROTECTION PROJECT MASSILLON, OHIO SECTION 2, UNIT 2 THIRD ST. AT CHERRY ROAD AND NEWMAN CREEK PLAN AND PROFILE	
DRAWN BY: H.G.H.	TRACED BY: D.R.J. - C.C.C.	CHECKED BY: H.F.B. - E.S.W.	DATE: OCT. 1948
APPROVED: CHIEF ENG. ASST.		APPROVED: DISTRICT ENGINEER	
APPROVED FOR:		SCALE: 1" = 50'	
DATE:		DRAWING NUMBER 0271-PM2-2-68/15 SHEET 40 OF 60	



PLAN-NORTH ABUTMENT



ELEVATION-NORTH ABUTMENT



SECTION D-D

For general information and explanation of reinforcing steel code, see Dwg. No. 20/1.
For plan and profile, see Dwg. No. 68/15.
For general plan, see Drawing No. 16/1.

DRAWN BY: <u>R.M.C.</u>		DEPARTMENT OF THE ARMY CORPS OF ENGINEERS OFFICE OF THE DISTRICT ENGINEER HUNTINGTON, W. VA.	
TRACED BY: <u>J.G.G.-JEC.</u>		TUSCARAWAS RIVER LOCAL PROTECTION PROJECT MASSILLON, OHIO SECTION 2, UNIT 2 RAISING THIRD ST. BRIDGE OVER NEWMAN CREEK	
CHECKED BY: <u>HEB.- G.O.S.</u>			
SUBMITTED BY: <u>[Signature]</u>			
C.M.E.F. ENG. DIV.			
APPROVED: <u>[Signature]</u> CHIEF ENG. ASST.		APPROVED: <u>[Signature]</u> COL. C.E., DISTRICT ENGINEER	
APPROVED FOR: _____ DATE: _____		DATE: <u>OCT. 1948</u> SCALE: $\frac{1}{4}'' = 1' - 0''$ SPEC. NO. _____ DRAWING NUMBER <u>0271 - PM2-2-68/16</u> SHEET 41 OF 80	