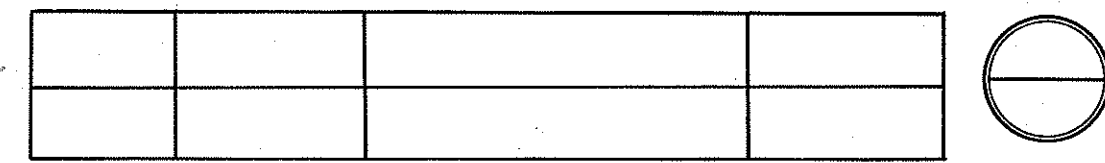
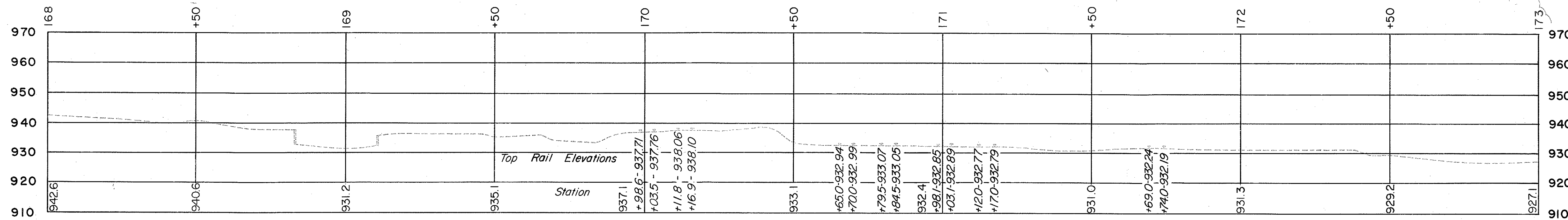
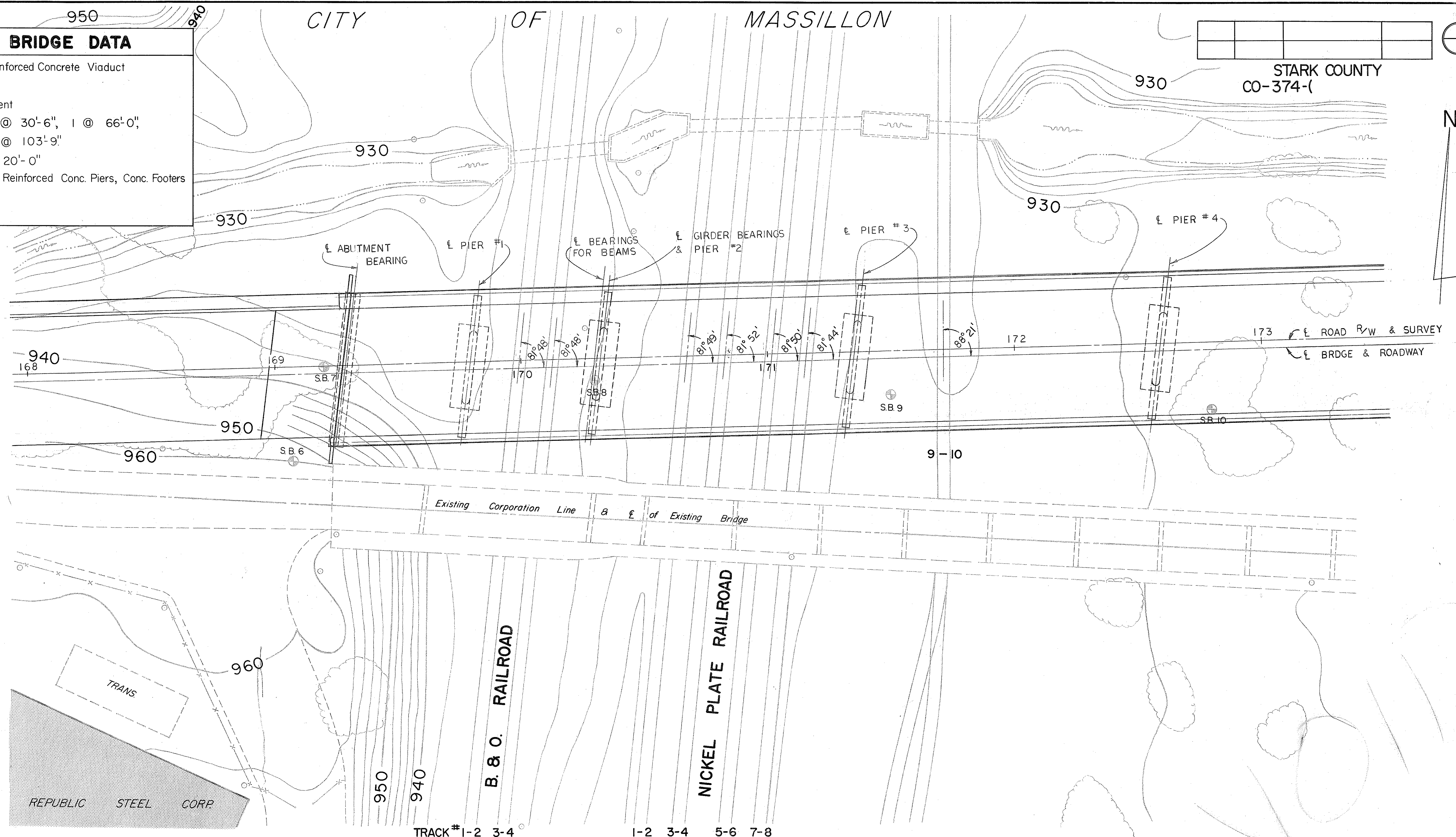


EXISTING BRIDGE DATA

TYPE - Steel & Reinforced Concrete Viaduct
 SKEW - None
 ALIGNMENT - Tangent
 CLEAR SPANS - 15 @ 30'-6", 1 @ 66'-0",
 4 @ 103'-9"
 CLEAR ROADWAY - 20'-0"
 SUB-STRUCTURE - Reinforced Conc. Piers, Conc. Footers
 LOADING - 12 Ton
 CONDITION - Critical



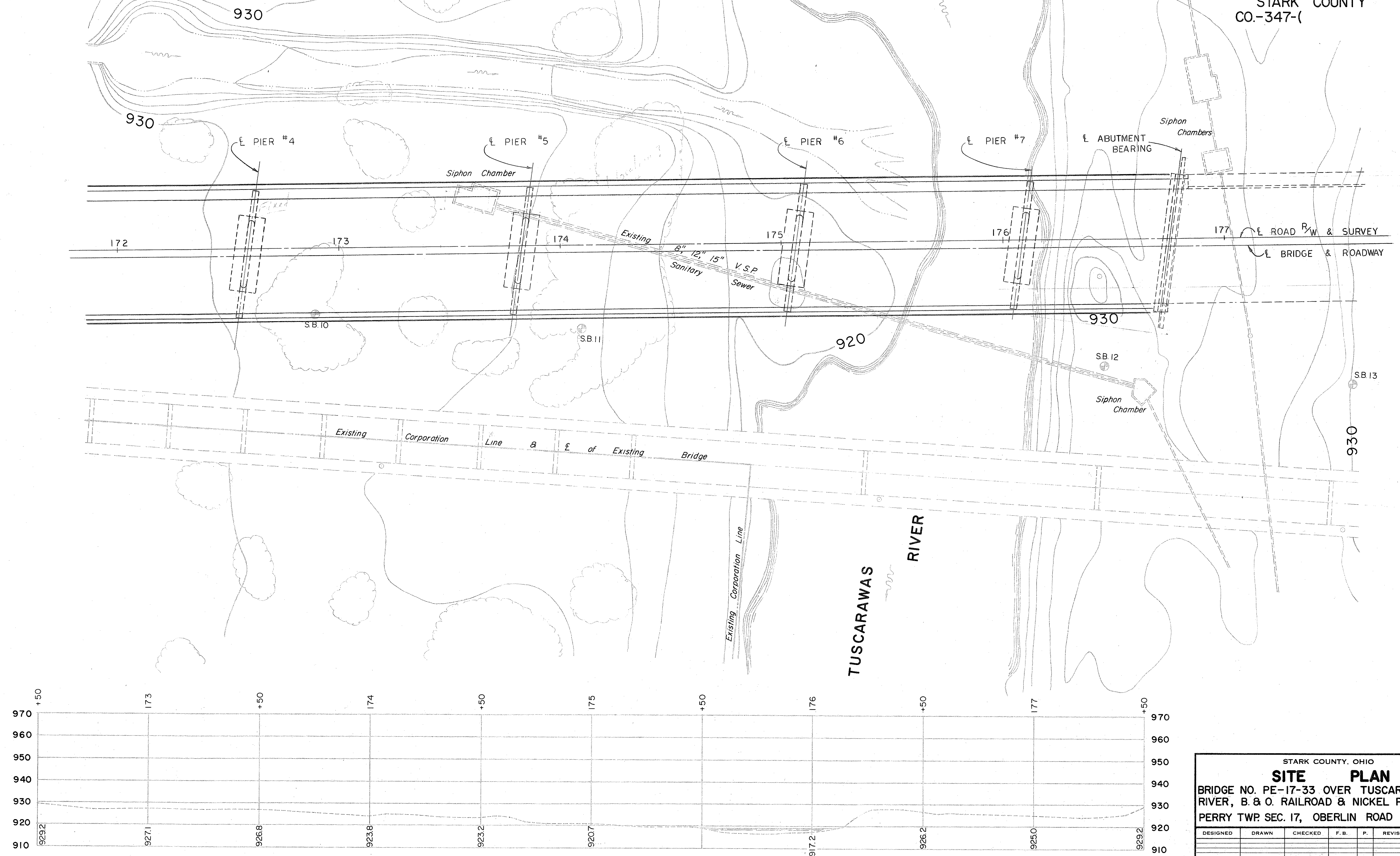
STARK COUNTY
 CO-374-(



STARK COUNTY, OHIO						
SITE PLAN						
BRIDGE NO. PE-17-33 OVER TUSCARAWAS RIVER, B. & O. RAILROAD & NICKEL PLATE R.R.						
PERRY TWP. SEC. 17, OBERLIN ROAD C-374						
DESIGNED	DRAWN	CHECKED	F.B.	P.	REVISED	DATE

STARK COUNTY
CO.-347-(

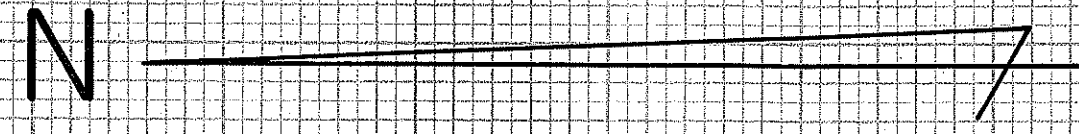
N



STARK COUNTY, OHIO
SITE PLAN
BRIDGE NO. PE-17-33 OVER TUSCARAWAS RIVER,
B. & O. RAILROAD & NICKEL PLATE R.R.
PERRY TWP. SEC. 17, OBERLIN ROAD C-374

FINAL SURVEY	BY	DATE
		SURVEYED
		PLOTTED
		ROUTE BOOK
		AREAS CHECKED
NO.		

ORIGINAL SURVEY	BY	DATE
		SURVEYED
		PLOTTED
		ROUTE BOOK
		AREAS CHECKED
NO.		



End Rail at Switch 980.5'

End Rail at Switch 980.5'

End Rail at Switch 698.0'

End Rail at Switch 698.0'

End Rail at Switch 574.5'

End Rail at Switch 574.5'

End Rail at Switch 463.8'

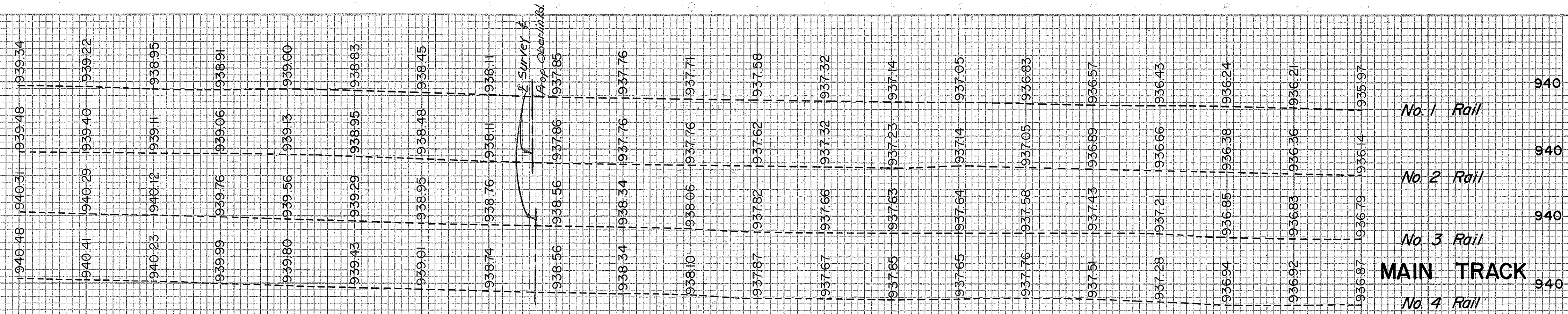
End Rail at Switch 463.8'

Survey & Proposed Oberlin Rd.

Begin Rail at Switch 630'

Begin Rail at Switch 630'

EXISTING RAIL ELEVATIONS — B. & O. RAILROAD



MAIN TRACK
No. 1 Rail
No. 2 Rail
No. 3 Rail
No. 4 Rail

4770.5'-Mile Post 94

MAIN TRACK
No. 1 Rail
No. 2 Rail

2501.0'-Mile Post 18

No. 3 Rail
No. 4 Rail

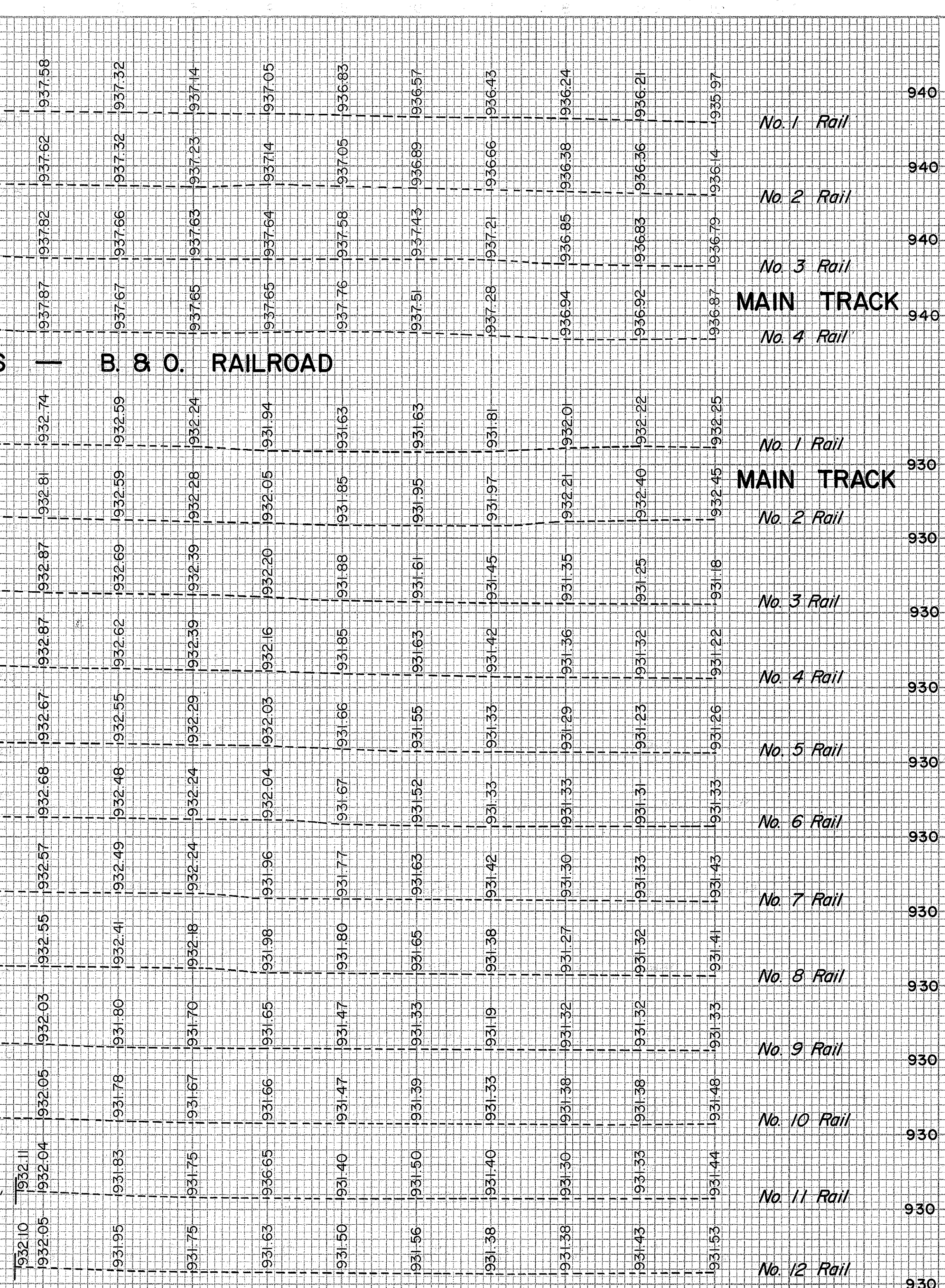
No. 5 Rail
No. 6 Rail

No. 7 Rail
No. 8 Rail

No. 9 Rail
No. 10 Rail

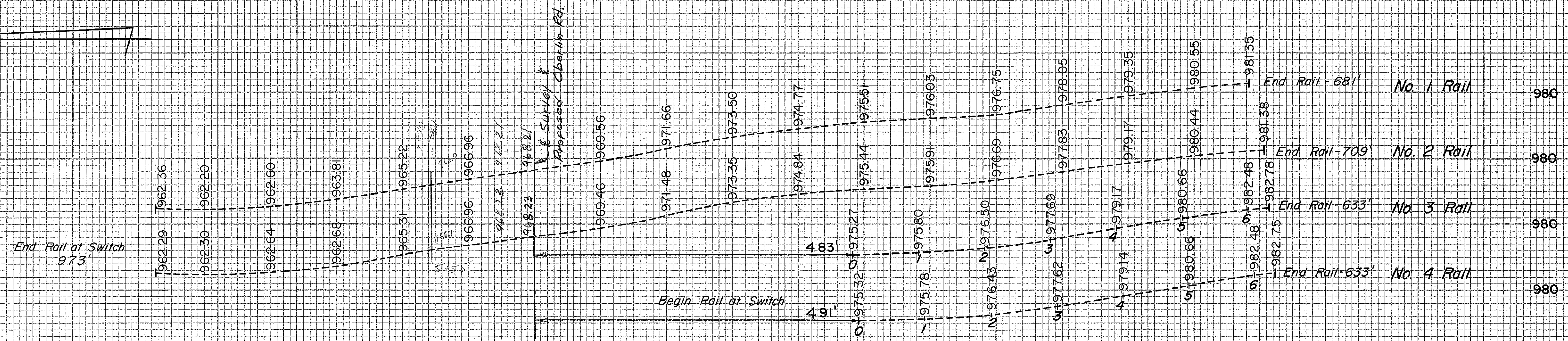
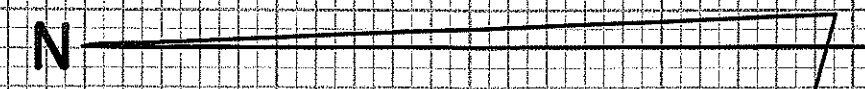
No. 11 Rail
No. 12 Rail

EXISTING RAIL ELEVATIONS — NICKEL PLATE RAILROAD



FINAL SURVEY	SURVEYED PLOTTED NOTE BOOK AREAS CHECKED	BY	DATE

ORIGINAL SURVEY	SURVEYED PLOTTED NOTE BOOK AREAS CHECKED	BY	DATE



EXISTING RAIL ELEVATIONS
SPUR TRACK - PENNSYLVANIA RAILROAD

ORIGINAL SURVEY	BY	DATE
SURVEYED		
PLOTTED		
TEMPERATURE		
AREAS		
AREAS CHECKED		
NO.		

