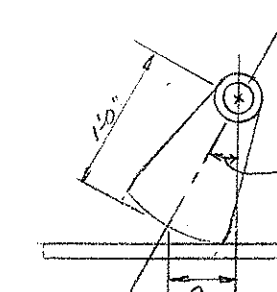
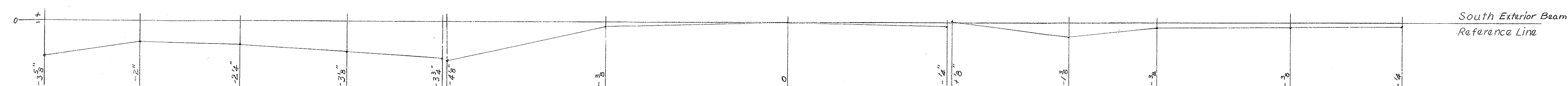
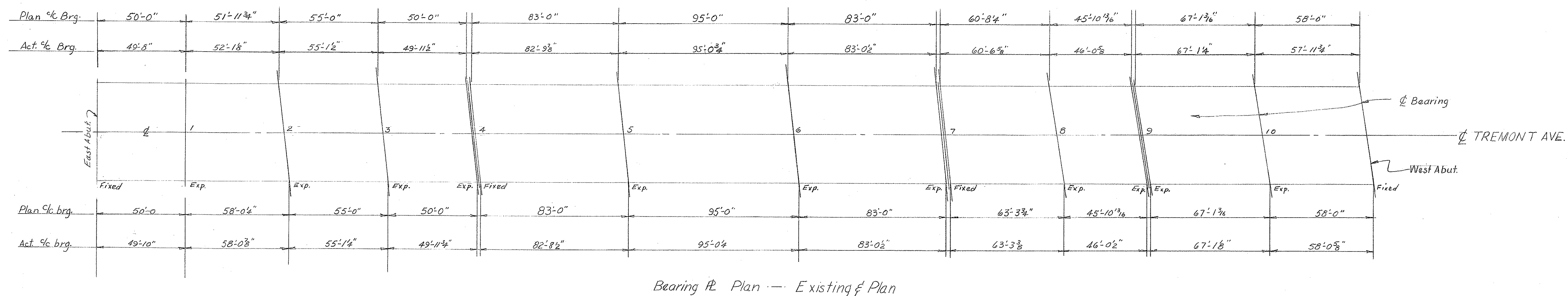
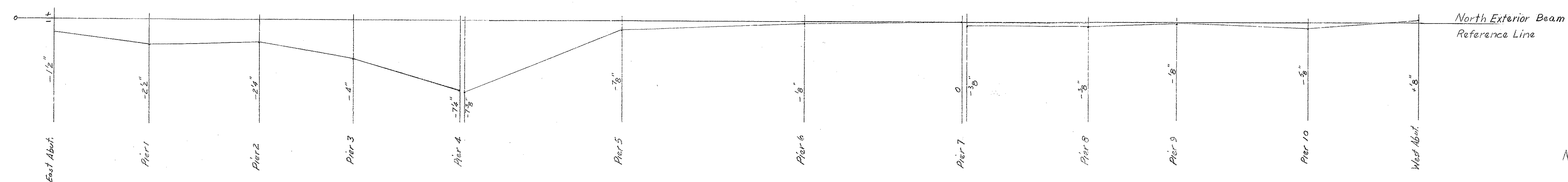


PE-7-23



Pier	"a" (ft)	α (deg)
1N	0.24	14°
1S	0.36	21°
2N	0.22	13°
2S	0.30	18°
3N	0.12	7°
3S	0.24	14°
4N	0.16	9°
4S	0.33	19°
4N	0 Fixed	0
4S	0 Fixed	0
5N	0	0
5S	(-) .04	2°
6N	(-) .02	1°
6S	(-) .09	5°
7N	(-) .04	2°
7S	(-) .09	5°
8N	0.13	7.5°
8S	0.08	4.5°
9N	(-) .04	2°
9S	(-) .07	4°
9N	(-) .02	1°
9S	(-) .07	4°
10N	.01	0.5°
10S	(-) .11	6°

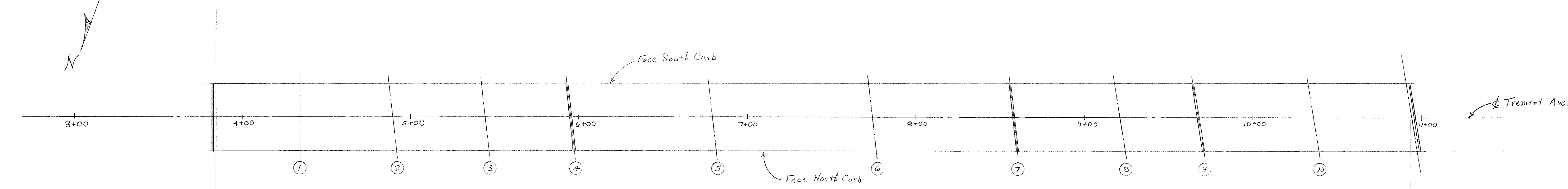
Notes: (-) means that rocker leans other direction than sketch shows; or "a" distances with (-) lean EAST while others lean WEST.



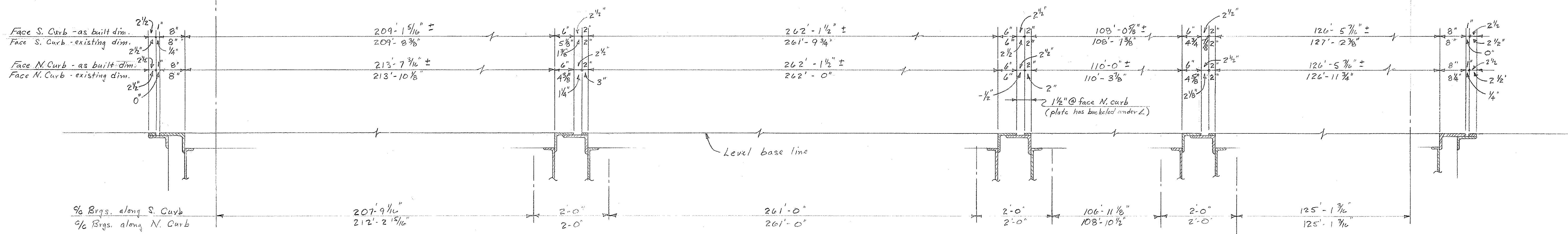
Differential Elevations — North Beam

STARK COUNTY, OHIO
TREMONT AVE.
PE-7-23
SUPER STRUCTURE DETAILS

DESIGNED	DRAWN	CHECKED	F.B.	P.	REVISED	DATE
J.K.	J.T.	RAK				

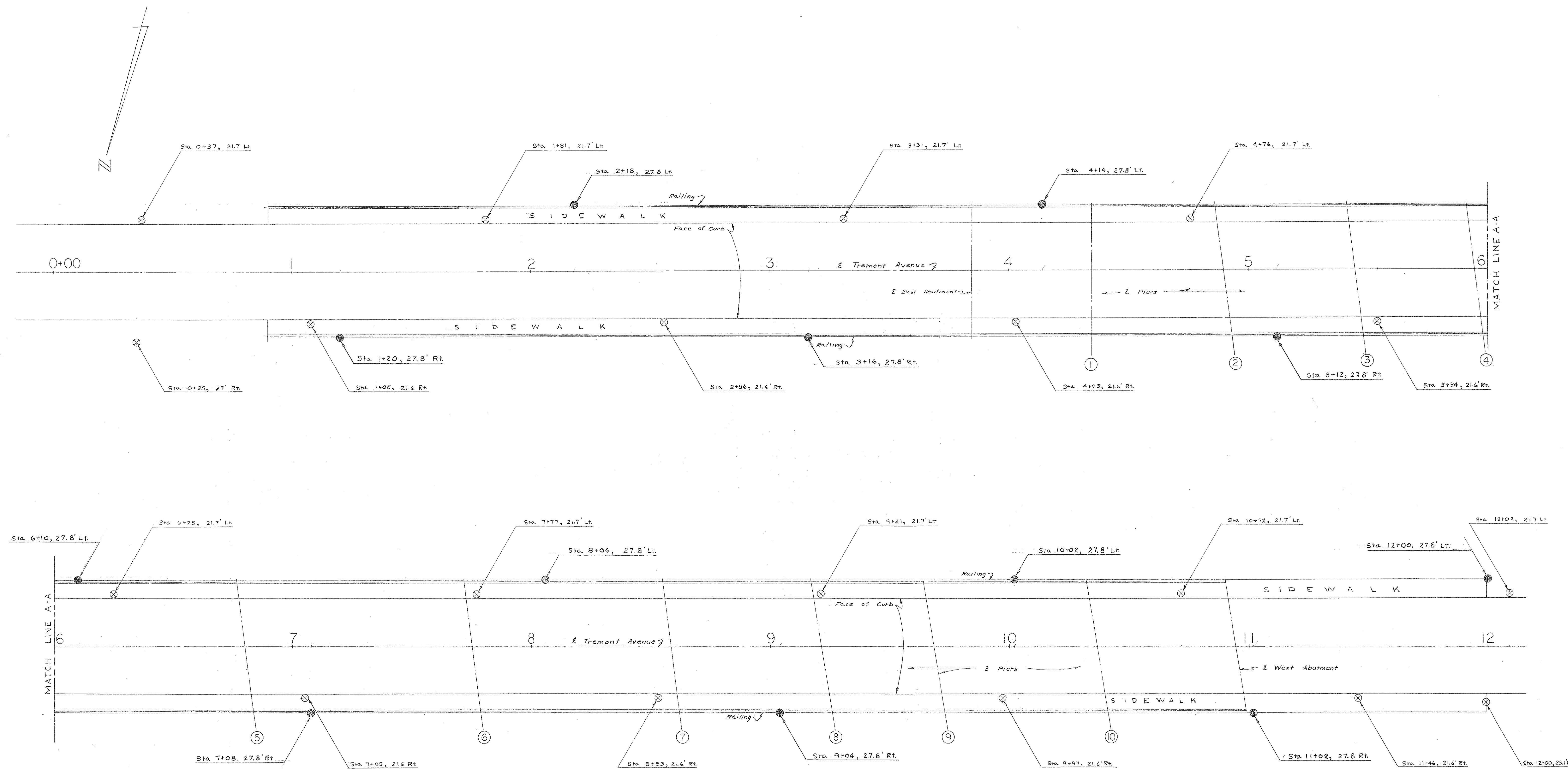


PLAN



EXPANSION DAM DIMENSIONS

STARK COUNTY, OHIO			
TREMONT AVENUE			
PE-7-23			
EXPANSION DAM DETAILS			
DESIGNED	DRAWN	CHECKED	REVIEWED
RAK	RAK	J.T.	



PLAN

- ⊗ Existing light posts with 6000 lumen incandescent lamps.
- New light posts with 22500 lumen mercury vapor lamps

STARK COUNTY, OHIO			
TREMONT AVENUE			
PE-7-23			
LIGHT POSTS LOCATION			
DESIGNED	DRAWN	CHECKED	REVIEWED
J. E. B.	J. R. B.	J. T. Z.	