

DATE: FEBRUARY 16, 2016

CLERK: DIANE ROLLAND

MASSILLON CITY COUNCIL
CITY OF MASSILLON, OHIO
CLAUDETTE O. ISTNICK, PRESIDENT

COUNCIL CHAMBERS

LEGISLATIVE DEPARTMENT

ORDINANCE NO. 27 – 2016

BY: STREET, HIGHWAYS, TRAFFIC AND SAFETY COMMITTEE

TITLE: AN ORDINANCE accepting the dedication of road right of way and easement areas for Westbrook Estates Phase 4, Massillon, Ohio, and declaring an emergency.

NOW, THEREFORE, BE IT ORDAINED BY THE COUNCIL OF THE CITY OF MASSILLON, STATE OF OHIO, THAT:

Section 1:

The dedication of road right of way as shown on the attached map. The request includes the approved said dedication and replat for the property located at Alpha Street N.W, Millrace Street N.W., as well as new streets, May Avenue and Samuel Court. At its January 13, 2016 meeting, the City Planning Commission approved said dedication and replat for property located on Alpha Street N.W. The request includes the dedication of 11.206 acres of property to create 29 new residential lots. The area is currently zoned R-2 Single Family Residential.

Section 2:

The Clerk of Council is authorized to correct any typographical errors discovered herein during or after the pendency or passage of this ordinance. The Clerk of Council is further authorized, in conjunction with the Law Department and the Council President to correct any ministerial or de minimis errors that do not substantially alter the intended results or numerical total sums of this ordinance, during or after the pendency or passage of this ordinance. Corrected copies are to be sent to all official recipients.

Section 3:

This Ordinance is declared to be an emergency measure immediately necessary for the preservation of the public health, safety and welfare of the community. Provided it receives the affirmative vote of two-thirds of the elected members to Council, it shall take effect and be in force immediately upon its passage and approval by the Mayor. Otherwise, it shall take effect and be in force from and after the earliest period allowed by law.

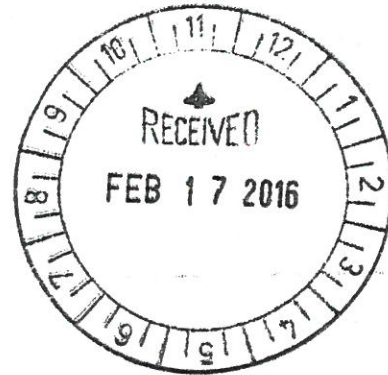
PASSED IN COUNCIL THIS 16th DAY OF February, 2016

ATTEST: *Diane Rolland*
DIANE ROLLAND, CLERK OF COUNCIL

Claudette Istnick
CLAUDETTE O. ISTNICK, PRESIDENT

APPROVED: *February 18, 2016*

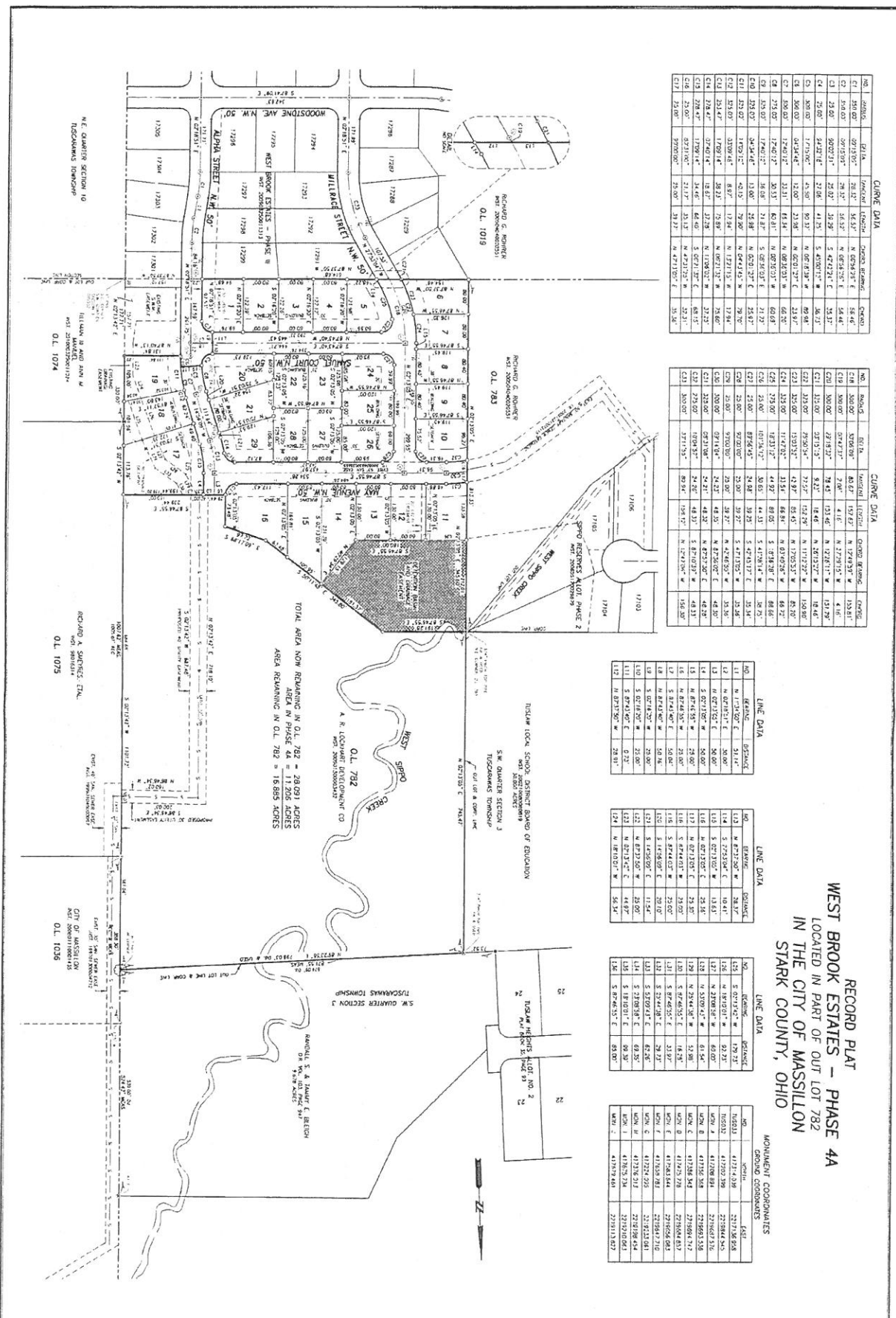
Kathy Catazaro-Perry
KATHY CATAZARO-PERRY, MAYOR



I hereby certify that the foregoing ordinance is a true copy of the original, as passed by the Council of the City of Massillon, Ohio, and approved as noted thereon:

Diane Rolland
Clerk of Council

Date *2/22/16*



CURVE DATA

NO.	STATION	CHORD BEARING	CHORD	ARC BEARING	ARC
C1	124.00	S 71°15'00" E	78.37	N 62°34'21" E	58.46
C2	124.00	S 71°15'00" E	78.37	N 62°34'21" E	58.46
C3	124.00	S 71°15'00" E	78.37	N 62°34'21" E	58.46
C4	124.00	S 71°15'00" E	78.37	N 62°34'21" E	58.46
C5	124.00	S 71°15'00" E	78.37	N 62°34'21" E	58.46
C6	124.00	S 71°15'00" E	78.37	N 62°34'21" E	58.46
C7	124.00	S 71°15'00" E	78.37	N 62°34'21" E	58.46
C8	124.00	S 71°15'00" E	78.37	N 62°34'21" E	58.46
C9	124.00	S 71°15'00" E	78.37	N 62°34'21" E	58.46
C10	124.00	S 71°15'00" E	78.37	N 62°34'21" E	58.46
C11	124.00	S 71°15'00" E	78.37	N 62°34'21" E	58.46
C12	124.00	S 71°15'00" E	78.37	N 62°34'21" E	58.46
C13	124.00	S 71°15'00" E	78.37	N 62°34'21" E	58.46
C14	124.00	S 71°15'00" E	78.37	N 62°34'21" E	58.46
C15	124.00	S 71°15'00" E	78.37	N 62°34'21" E	58.46
C16	124.00	S 71°15'00" E	78.37	N 62°34'21" E	58.46
C17	124.00	S 71°15'00" E	78.37	N 62°34'21" E	58.46

CURVE DATA

NO.	STATION	CHORD BEARING	CHORD	ARC BEARING	ARC
C18	124.00	S 71°15'00" E	78.37	N 62°34'21" E	58.46
C19	124.00	S 71°15'00" E	78.37	N 62°34'21" E	58.46
C20	124.00	S 71°15'00" E	78.37	N 62°34'21" E	58.46
C21	124.00	S 71°15'00" E	78.37	N 62°34'21" E	58.46
C22	124.00	S 71°15'00" E	78.37	N 62°34'21" E	58.46
C23	124.00	S 71°15'00" E	78.37	N 62°34'21" E	58.46
C24	124.00	S 71°15'00" E	78.37	N 62°34'21" E	58.46
C25	124.00	S 71°15'00" E	78.37	N 62°34'21" E	58.46
C26	124.00	S 71°15'00" E	78.37	N 62°34'21" E	58.46
C27	124.00	S 71°15'00" E	78.37	N 62°34'21" E	58.46
C28	124.00	S 71°15'00" E	78.37	N 62°34'21" E	58.46
C29	124.00	S 71°15'00" E	78.37	N 62°34'21" E	58.46
C30	124.00	S 71°15'00" E	78.37	N 62°34'21" E	58.46
C31	124.00	S 71°15'00" E	78.37	N 62°34'21" E	58.46
C32	124.00	S 71°15'00" E	78.37	N 62°34'21" E	58.46
C33	124.00	S 71°15'00" E	78.37	N 62°34'21" E	58.46

LINE DATA

NO.	STATION	BEARING	DISTANCE
L1	124.00	S 71°15'00" E	78.37
L2	124.00	S 71°15'00" E	78.37
L3	124.00	S 71°15'00" E	78.37
L4	124.00	S 71°15'00" E	78.37
L5	124.00	S 71°15'00" E	78.37
L6	124.00	S 71°15'00" E	78.37
L7	124.00	S 71°15'00" E	78.37
L8	124.00	S 71°15'00" E	78.37
L9	124.00	S 71°15'00" E	78.37
L10	124.00	S 71°15'00" E	78.37
L11	124.00	S 71°15'00" E	78.37
L12	124.00	S 71°15'00" E	78.37

LINE DATA

NO.	STATION	BEARING	DISTANCE
L13	124.00	S 71°15'00" E	78.37
L14	124.00	S 71°15'00" E	78.37
L15	124.00	S 71°15'00" E	78.37
L16	124.00	S 71°15'00" E	78.37
L17	124.00	S 71°15'00" E	78.37
L18	124.00	S 71°15'00" E	78.37
L19	124.00	S 71°15'00" E	78.37
L20	124.00	S 71°15'00" E	78.37
L21	124.00	S 71°15'00" E	78.37
L22	124.00	S 71°15'00" E	78.37
L23	124.00	S 71°15'00" E	78.37

LINE DATA

NO.	STATION	BEARING	DISTANCE
L24	124.00	S 71°15'00" E	78.37
L25	124.00	S 71°15'00" E	78.37
L26	124.00	S 71°15'00" E	78.37
L27	124.00	S 71°15'00" E	78.37
L28	124.00	S 71°15'00" E	78.37
L29	124.00	S 71°15'00" E	78.37
L30	124.00	S 71°15'00" E	78.37
L31	124.00	S 71°15'00" E	78.37
L32	124.00	S 71°15'00" E	78.37
L33	124.00	S 71°15'00" E	78.37
L34	124.00	S 71°15'00" E	78.37

MONUMENT COORDINATES

NO.	STATION	EAST	NORTH
M1	124.00	124.00	124.00
M2	124.00	124.00	124.00
M3	124.00	124.00	124.00
M4	124.00	124.00	124.00
M5	124.00	124.00	124.00
M6	124.00	124.00	124.00
M7	124.00	124.00	124.00
M8	124.00	124.00	124.00
M9	124.00	124.00	124.00
M10	124.00	124.00	124.00

RECORD PLAT
WEST BROOK ESTATES - PHASE 4A
 LOCATED IN PART OF OUT LOT 782
 IN THE CITY OF MASSILLON
 STARK COUNTY, OHIO

REVISIONS DATE BY CHKD _____ _____ _____		PROPERTY 2 of 2 124.00 124.00 124.00	RECORD PLAT WEST BROOK ESTATES - PHASE 4A LOCATED IN PART OF OUT LOT 782 IN THE CITY OF MASSILLON STARK COUNTY, OHIO	Civil Design Associates, Inc. Consulting Engineers & Surveyors 1760 BRIGHTWOOD ROAD S.E. NEW PHARMACY PARK, OHIO 44663 (330) 335-4262
---	--	---	--	--