

2.13 1" SURFACE COURSE (STATE SPEC 404) ON 3" BINDER COURSE (STATE SPEC 301) ON MC-30 PRIME COAT (STATE SPEC 408) (THIS CONTRACT) ON 6" COMPACTED LIMESTONE BASE (STATE SPEC 304) (INSTALLED AND GRADED BY CITY ROAD CREWS). TREES WILL BE CUT DOWN BY CITY PARK DEPARTMENT AND STUMPS WILL BE REMOVED BY CITY ROAD CREW

PARTIAL KEYNOTES:

2.16 EXISTING TREE TO REMAIN. ADJUST PAVING IF NECESSARY

2.18 CITY WILL DEPOSIT CU. YDS. AS NOTED OF ACCEPTABLE FILL IN THIS LOCATION. SHORTAGES OF FILL, IF ANY, WILL BE REPORTED IN AN ADDENDUM

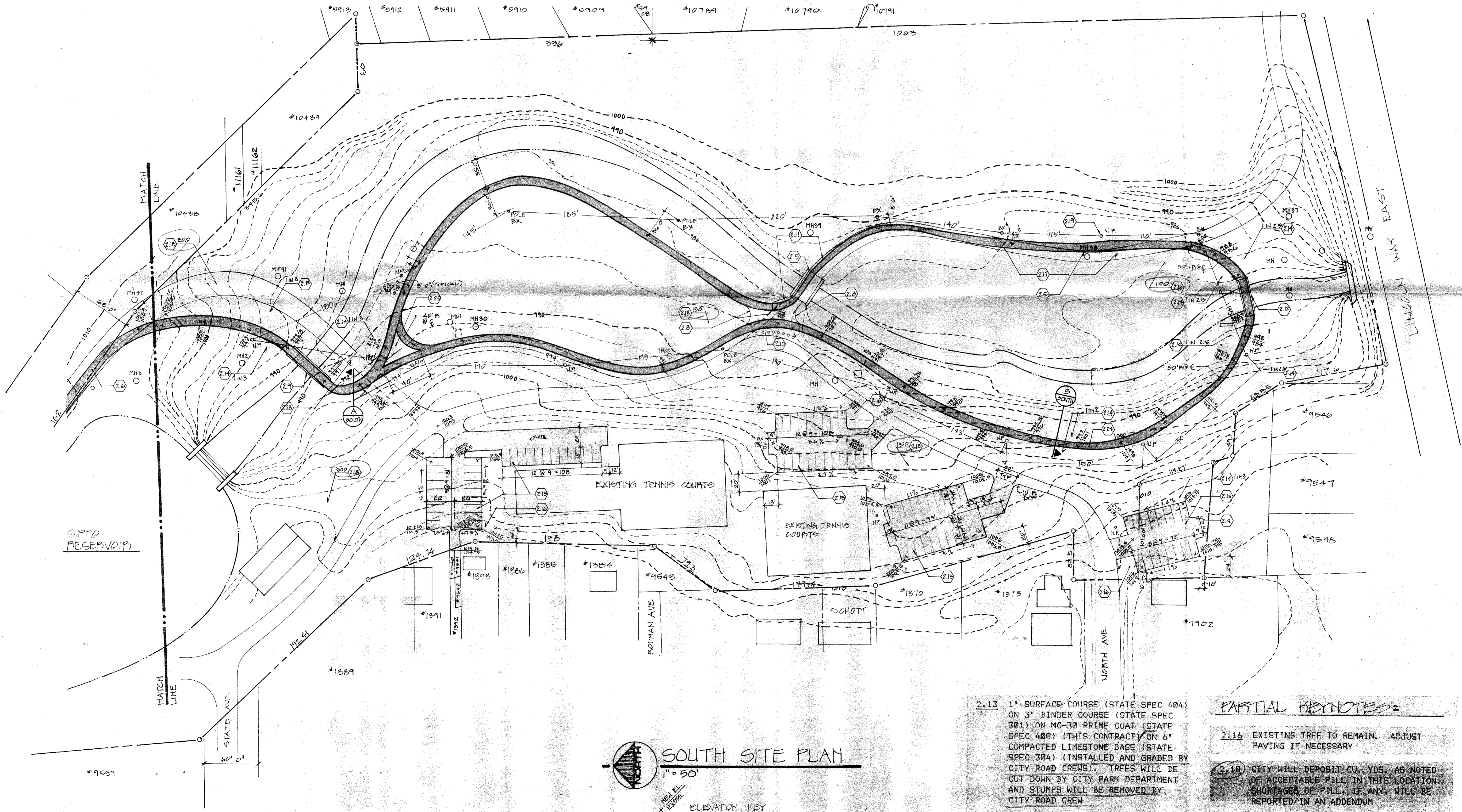
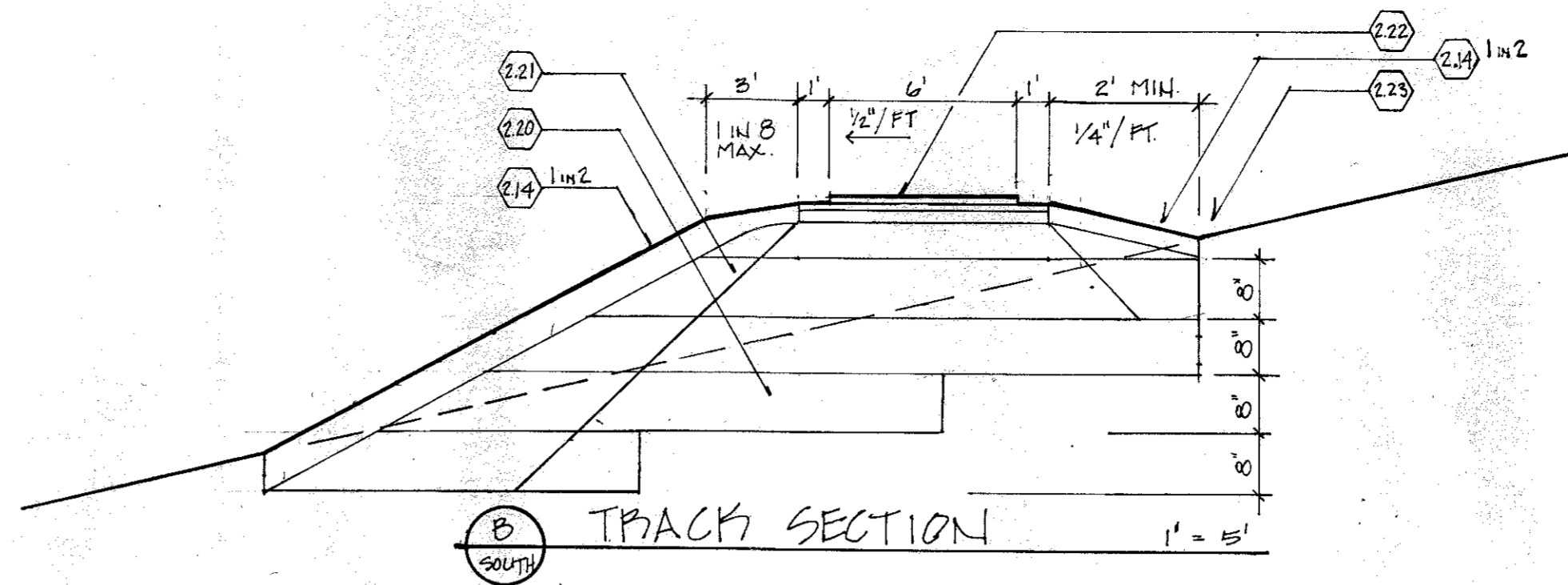
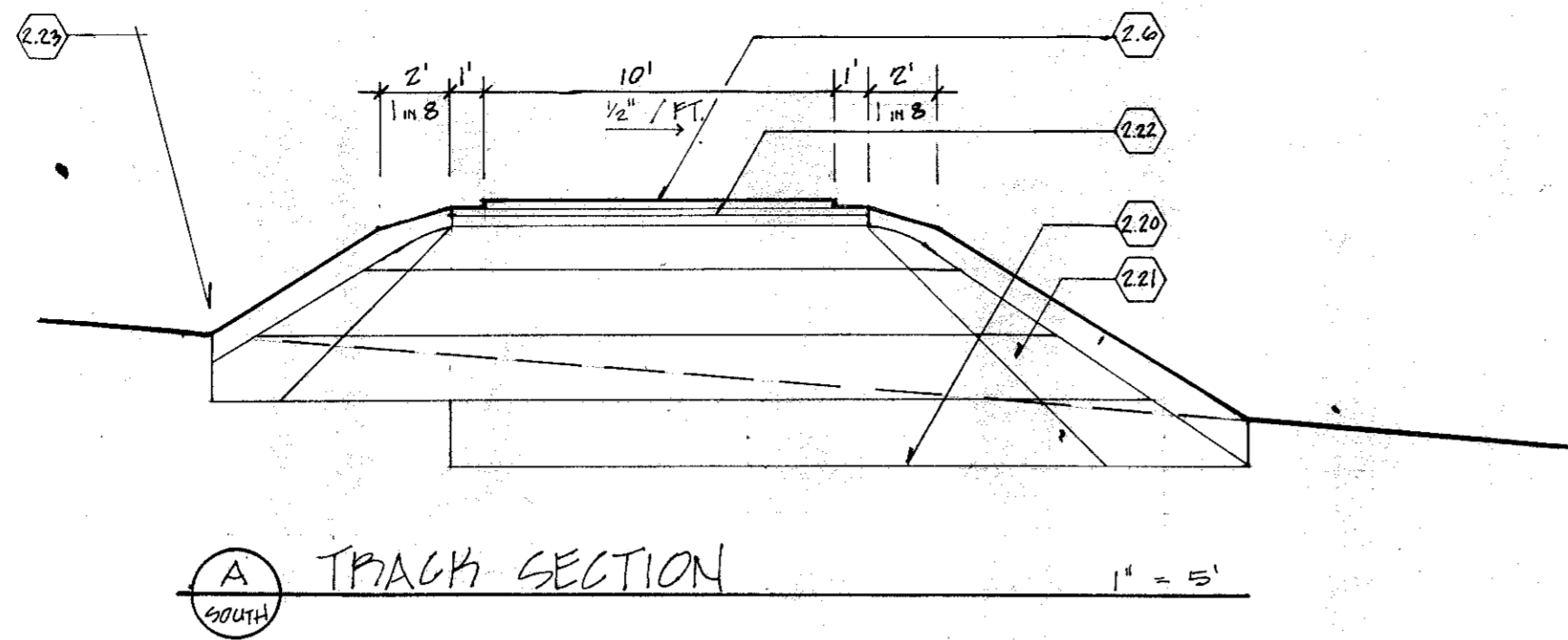
WALKING AND JOGGING PATH FOR
MASSILLON PARK SYSTEM
 NORTH SIPPO AND RESERVOIR PARKS
 MASSILLON OHIO

HARRIS DAY ARCHITECTS
 INCORPORATED
 3821 WALES ROAD NW
 MASSILLON, OHIO 44864
 PHONE: 216-837-4242

REVISIONS:

JOB NO: 8710 m/jg
 DATE: 28 APRIL 87
 DWN BY: J.S./M.P./D.C./K.
 CKD BY: J.B.

SOUTH



2.13 1" SURFACE COURSE (STATE SPEC 404) ON 3" BINDER COURSE (STATE SPEC 301) ON MC-30 PRIME COAT (STATE SPEC 408) (THIS CONTRACT) ON 6" COMPACTED LIMESTONE BASE (STATE SPEC 304) (INSTALLED AND GRADED BY CITY ROAD CREWS). TREES WILL BE CUT DOWN BY CITY PARK DEPARTMENT AND STUMPS WILL BE REMOVED BY CITY ROAD CREW

PARTIAL KEYNOTES:

2.16 EXISTING TREE TO REMAIN. ADJUST PAVING IF NECESSARY

2.18 CITY WILL DEPOSIT CU. YDS. AS NOTED OF ACCEPTABLE FILL IN THIS LOCATION. SHORTAGES OF FILL, IF ANY, WILL BE REPORTED IN AN ADDENDUM

WALKING AND JOGGING PATH FOR
MASSILLON PARK SYSTEM
 NORTH Sippo AND RESERVOIR PARKS
 MASSILLON OHIO

HARRIS DAY ARCHITECTS
 INCORPORATED
 3821 WALES ROAD N.W.
 MASSILLON, OHIO 44646
 PHONE: 216-837-4248

REVISIONS:

--	--

JOB NO: 8910.m.jg
 DATE: 28 APRIL 87
 DWN BY: JB/JFP/DCR/KMZ
 CND BY: JB

SOUTH