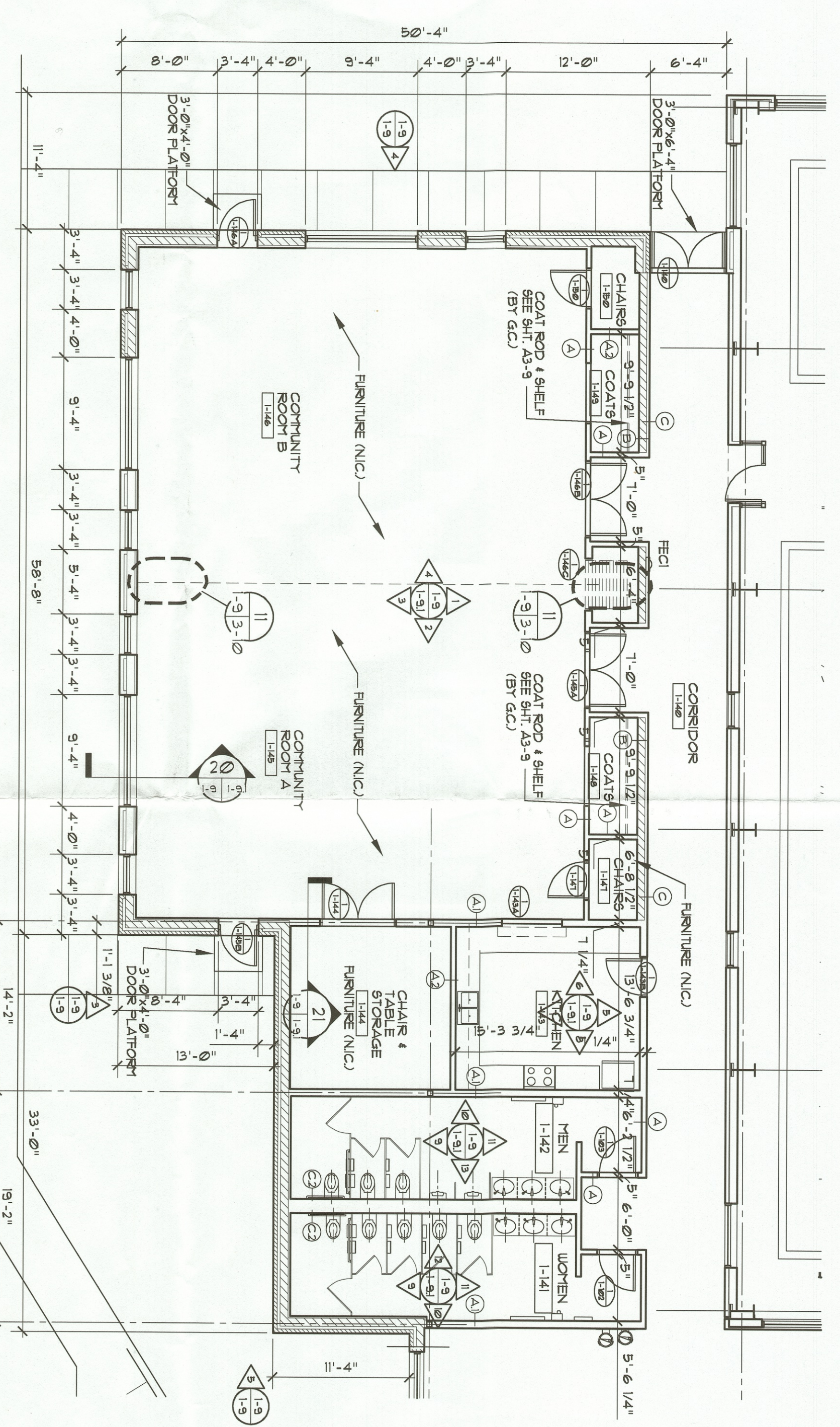
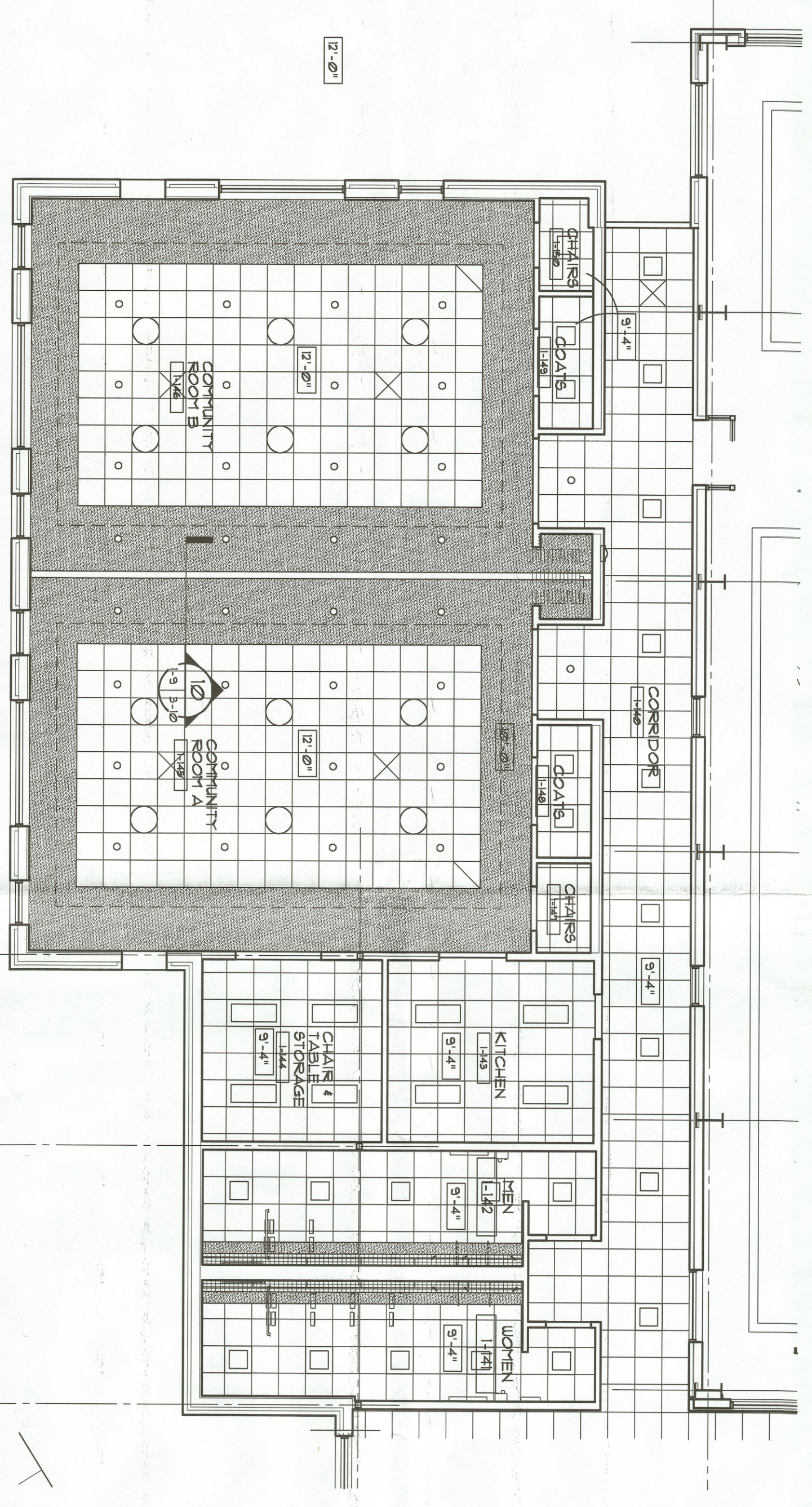


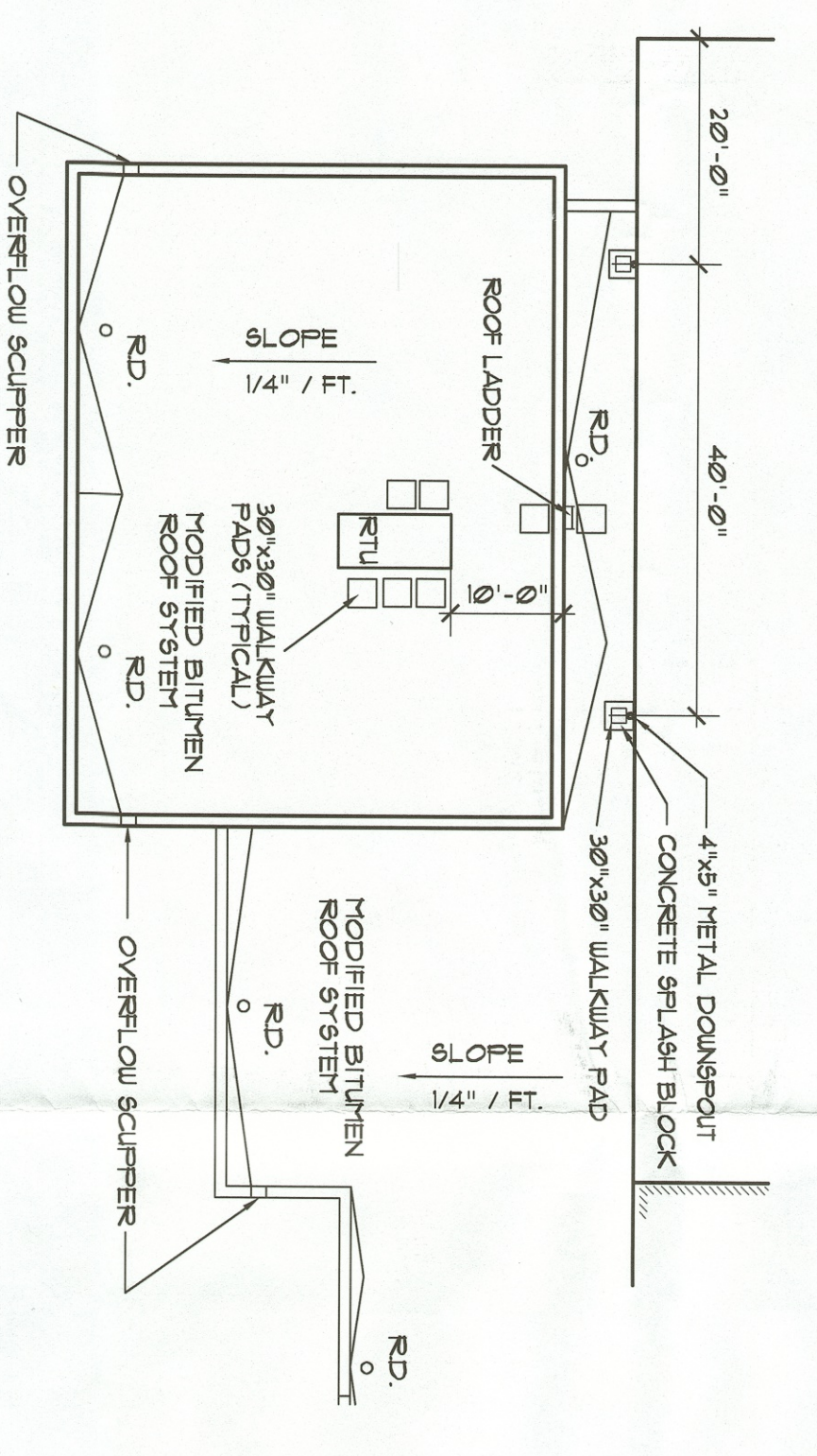
Drawn by: Checked by:



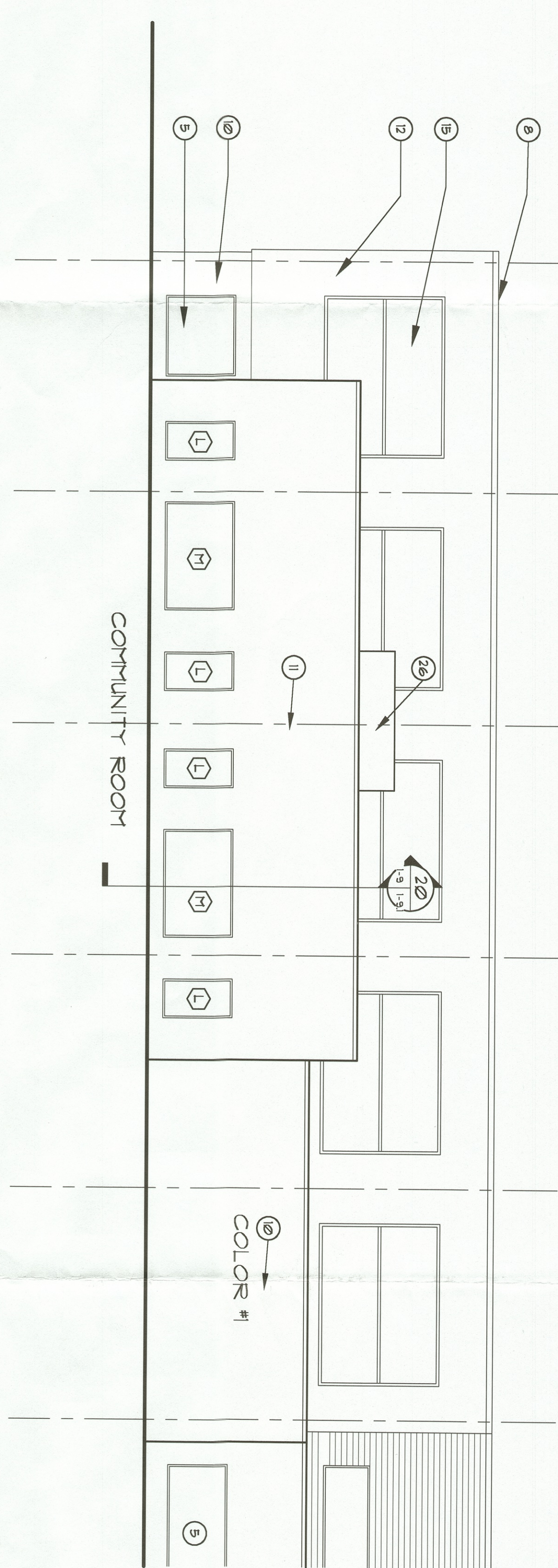
ALTERNATE FLOOR PLAN
1/8" = 1'-0"



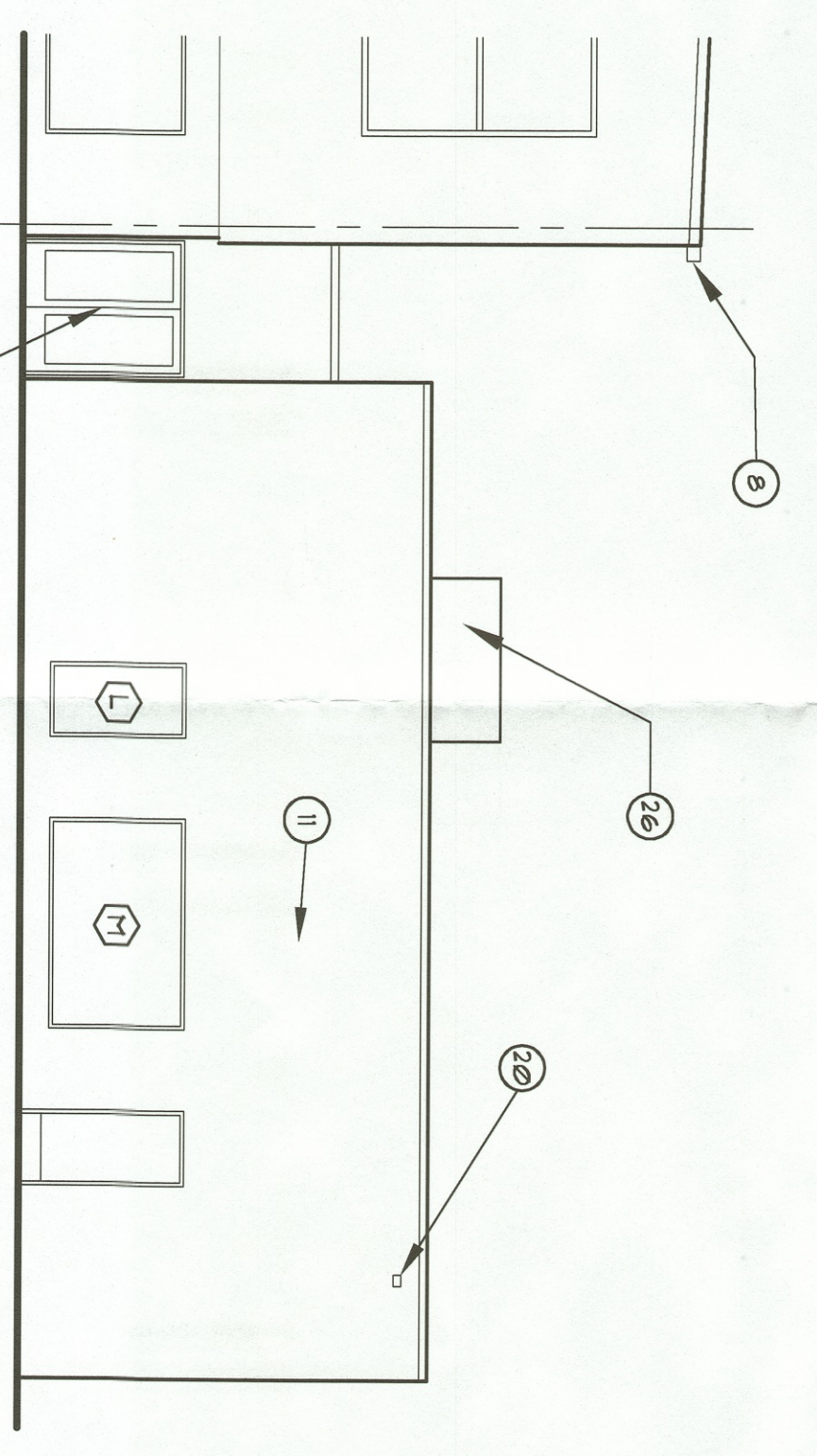
ALTERNATE REFLECTED CEILING PLAN
1/8" = 1'-0"



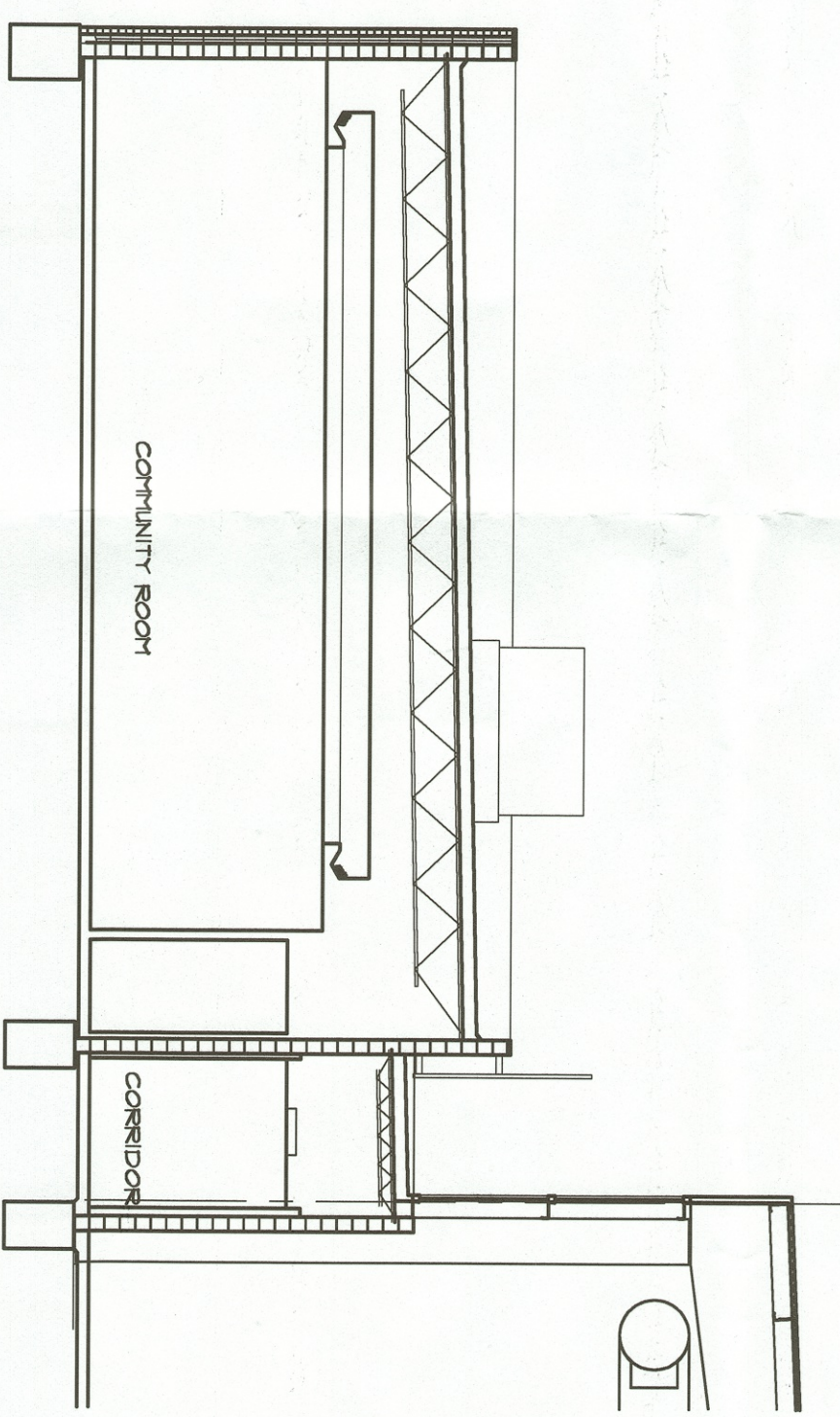
ALTERNATE ROOF PLAN
1/8" = 1'-0"



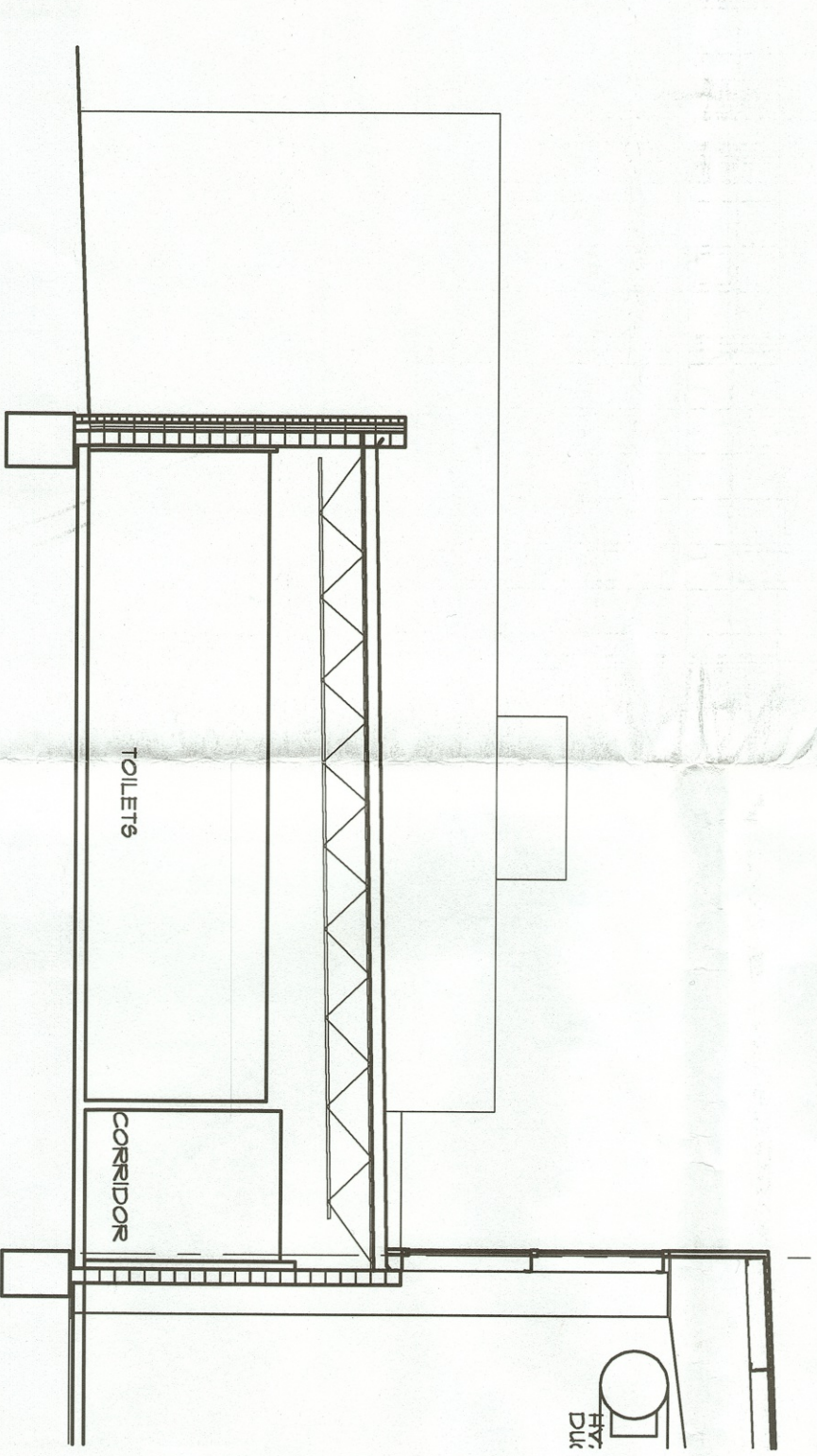
ELEVATION
1/8" = 1'-0"



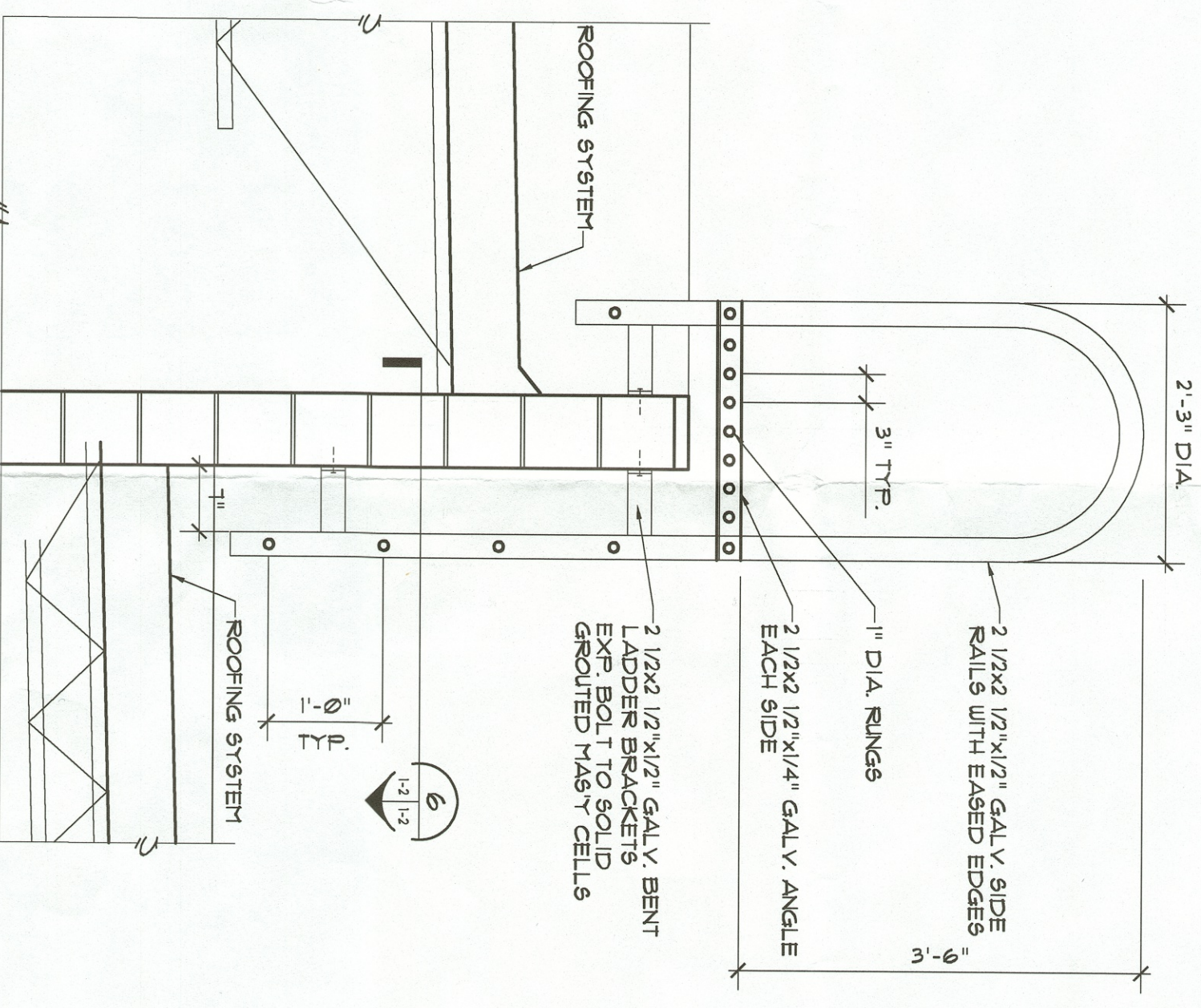
ELEVATION
1/8" = 1'-0"



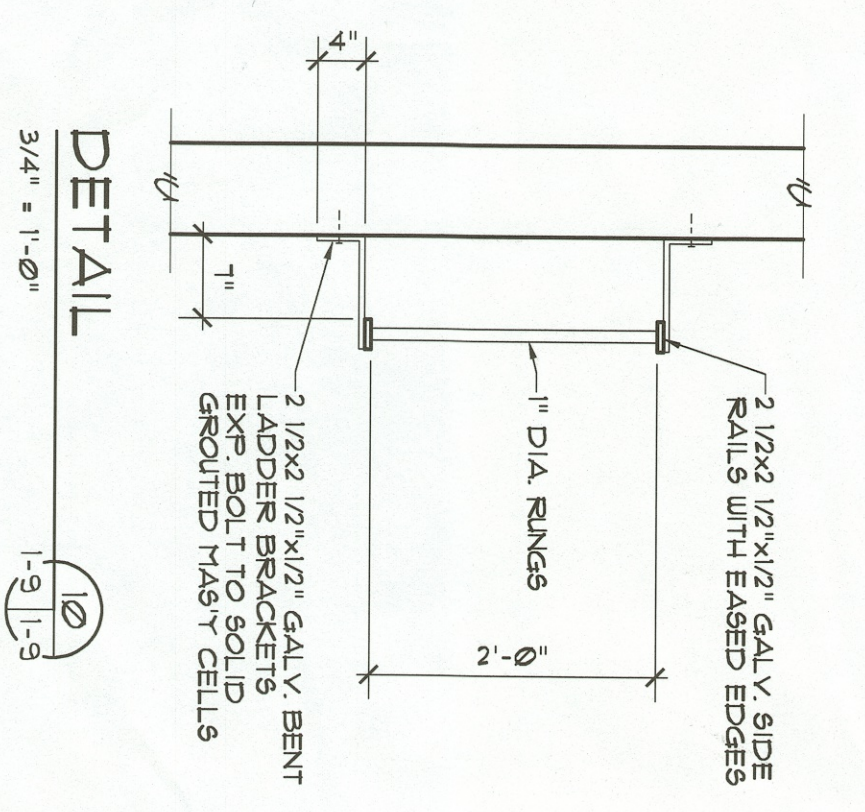
BUILDING SECTION
1/8" = 1'-0"



BUILDING SECTION
1/8" = 1'-0"



LADDER DETAIL
3/4" = 1'-0"

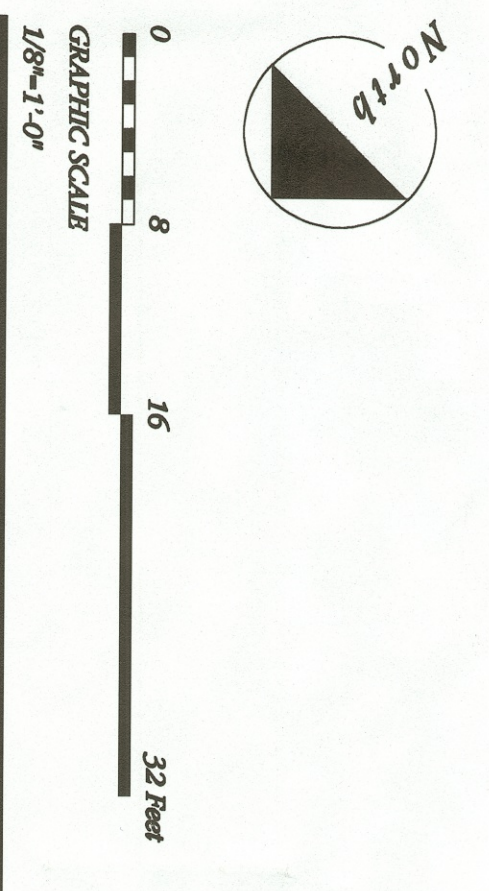


DETAIL
3/4" = 1'-0"

No.	Date	Description
1	2/25/01	ISSUE FOR BIDDING AND PERMIT
2	3/14/01	ADDENDUM #1

Key Notes:

- STANDING SEAM METAL ROOF.
- SPILT FACE CHL. SEE STRUCTURAL.
- METAL COVERS.
- ALUMINUM WINDOW SYSTEM.
- ALUMINUM ENTRANCE AND STOREFRONT.
- EXTERIOR LIGHTING - SEE ELECTRICAL.
- GUTTER AND DOWNSPOUT.
- MODULAR FACE BRICK - COLOR #1.
- MODULAR FACE BRICK - COLOR #2.
- COMPOSITE INSULATED METAL PANELS.
- HORIZONTAL PROFILED METAL SIDING.
- TRANS LUMEN FIBERGLASS LIGHT PANELS.
- WOOD FENCE - PAINTED.
- FREE STANDING CAST METAL SIGN LETTERS.
- BY HIGHT, 28" LONG CENTERED ON CANOPY.
- WOOD FENCE - PAINTED.
- NOT BED.
- OVERLAP JOINT - SEE DETAIL 9/A3-3.
- 1/2" CRIP JOINT W/ SEALANT AND BACKER ROD.
- COMPOSITE METAL PANEL - COLOR #1.
- COMPOSITE METAL PANEL - COLOR #2.
- ARCHITECTURALLY EXPOSED PTD. STEEL COLUMN.
- MODIFIED BUTYREN ROOFING SYSTEM.
- PAINT ROOF TOP MECHANICAL UNIT WHITE.



City of Massillon
Massillon Recreation Center

Commission #99083.00

1st Street N.W. & Cherry Road N.W.
Massillon, Ohio 44647
van Dyk Pace Westlake
Architects

The Huntington Building
925 Buxton Avenue, Suite 1900
Cleveland, Ohio
44115-1407
216.522.1350

Alternate #3 Plan - Community /
Multi-Purpose Room