

PLAN AND PROFILE

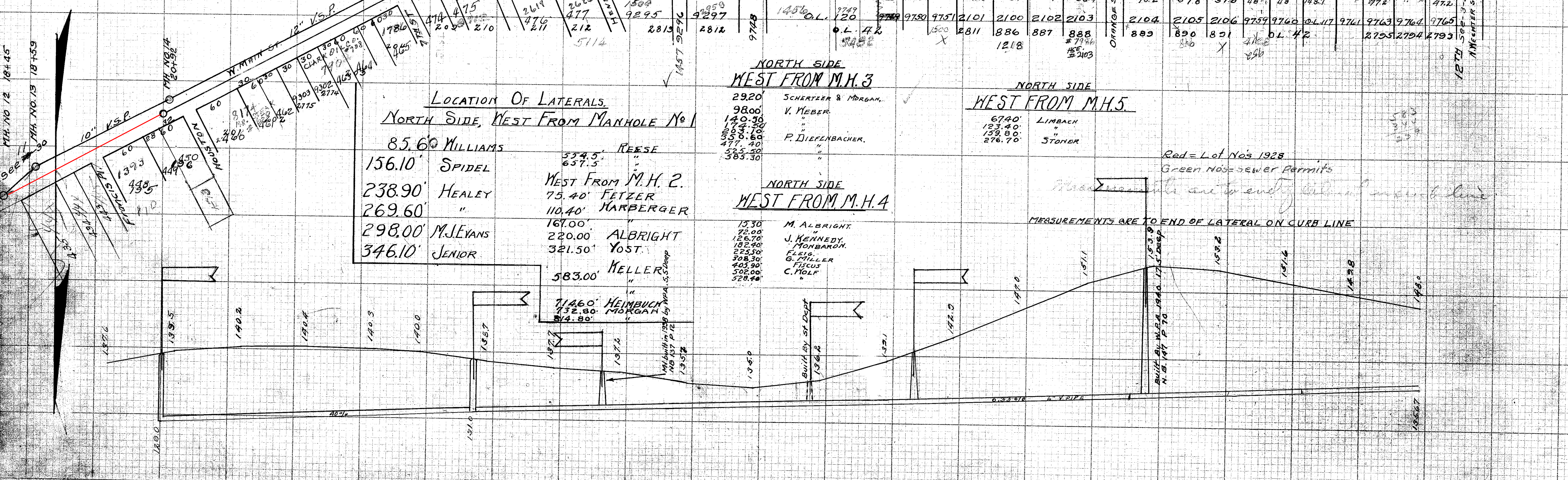
WOOSTER ST. SANITARY SEWER.

WOOSTER ST.

WOOSTER ST.

STREET

M.H. 3



LOCATION OF LATERALS.
NORTH SIDE, WEST FROM MANHOLE No 1

- 85.60 WILLIAMS
- 156.10 SPIDEL
- 238.90 HEALEY
- 269.60 "
- 298.00 M. J. EVANS
- 346.10 JENIOR

- WEST FROM M.H. 2.
- 75.40 FETZER
- 110.40 HARBERGER
- 167.00 "
- 220.00 ALBRIGHT
- 321.50 YOST
- 583.00 KELLER
- 714.60 HEIMBUCH
- 732.80 MORGAN

NORTH SIDE
WEST FROM M.H. 3

- 29.20 SCHERTZER & MORGAN.
- 98.00 V. WEBER
- 140.30 "
- 174.50 "
- 203.10 P. DIEFENBACHER.
- 356.60 "
- 477.40 "
- 525.50 "
- 585.30 "

NORTH SIDE
WEST FROM M.H. 4

- 15.30 M. ALBRIGHT.
- 72.00 J. KENNEDY.
- 126.70 MONBARDON.
- 182.40 FLEIG.
- 225.50 G. MILLER
- 308.30 FISCUS
- 405.90 C. MOLF
- 502.00 "
- 528.40 "

NORTH SIDE
WEST FROM M.H. 5

- 67.40 LIMBACH
- 123.40 "
- 159.80 STONER
- 276.70 "

Red = Lot Nos 1928
Green Nos = Sewer Permits

MEASUREMENTS ARE TO END OF LATERAL ON CURB LINE