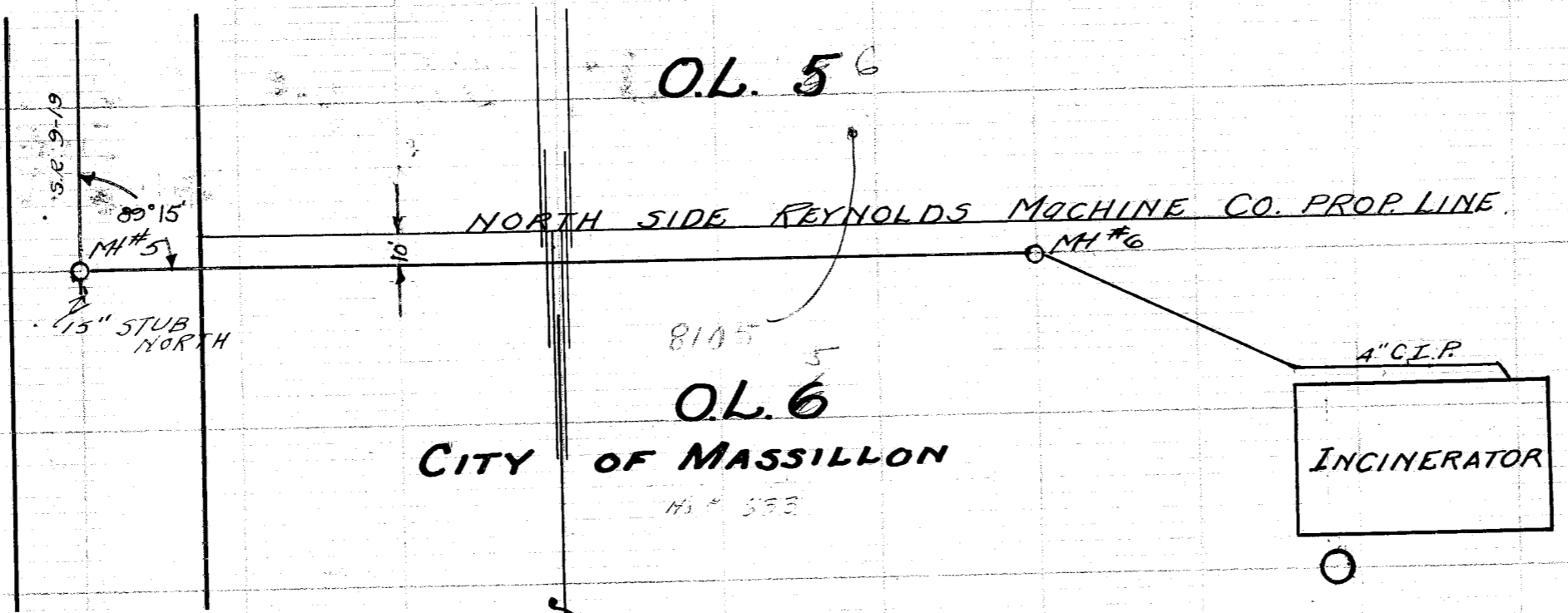
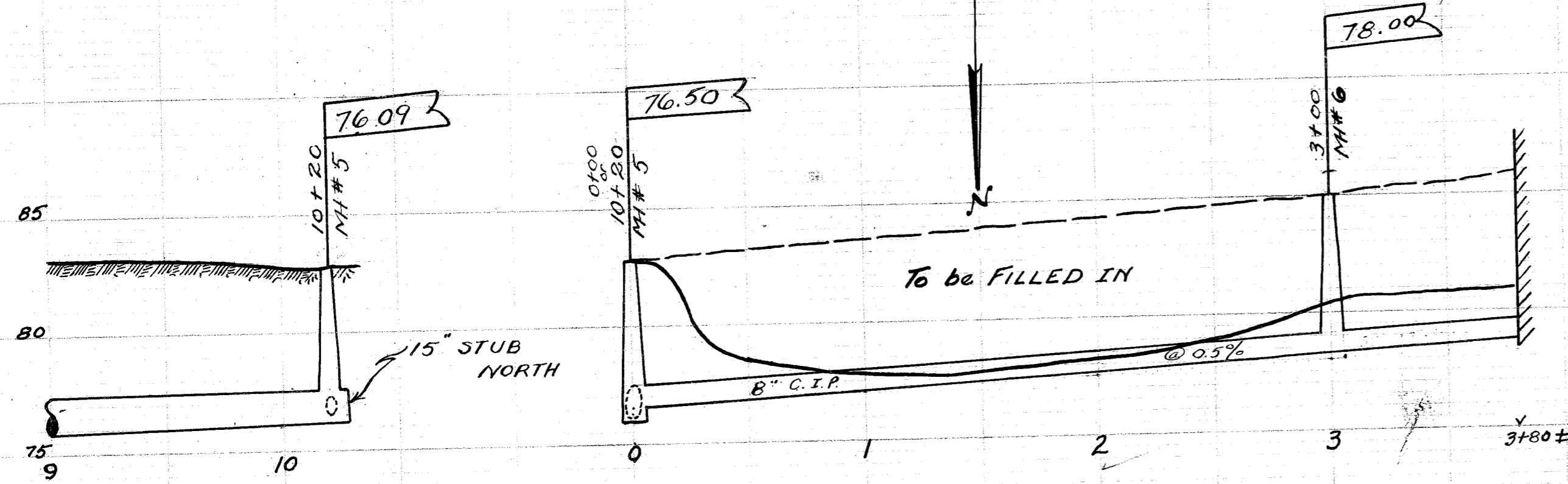


B.M. - Nail on top of  
CON. FNDT. 5' SOUTH  
OF S.E. COR. Bldg.  
Elev. - 86.66



**LATERAL RECORD.**

Lat.	Lat. No.	Side	Dpth.	x	Station	Remarks
FROM	CHERRY AVE. N.W.				1020' NORTH BY 380' WEST TO	INCINERATOR
OH	0100	EXISTING.	11 <sup>0</sup>			
1		W			1+10 <sup>5</sup>	BLIND Y
3		W			1+52	" "
MH#1			7 <sup>2</sup>		2+12	25' FROM W.P.L.
MH#2			11 <sup>2</sup>		3+56	26' " " " "
5	OL 5	W			25' 3+67 WYE	BUILT TO FENCE SEEING.
7	OL 5	W			27' 3+81 WYE	" " " "
MH#3			10 <sup>2</sup>		6+52	
MH#4			7 <sup>5</sup>		3+37	
MH#5			6 <sup>2</sup>		10+20	15" STUB NORTH
MH#6			8 <sup>0</sup>		3+00	



**3 RD ST., N. W**  
**FROM CHERRY RD. N. W. NORTH 1020'**  
**AND WEST 380' TO INCINERATOR**  
 BUILT IN 1929 BY JULIUS WITTMAN UNDER PLANS  
 MADE BY & SUPERVISION OF THE CITY ENGR. DEPT.  
 C. E. RICE - CITY ENGR. PREL. NOTES NB 65 P 9  
 SAM JONES - CONST. ENGR. CONSTR. NOTES NB 88  
 CLARK ELSEA - INSPECTOR PG 24-5-6-7  
 PLOTTED AUG. 15, 1929 BY H. PIPER FINAL MEAS. NB 86 P 69  
 INSPE. RECORD 151

Green Nos - Sewer Permits