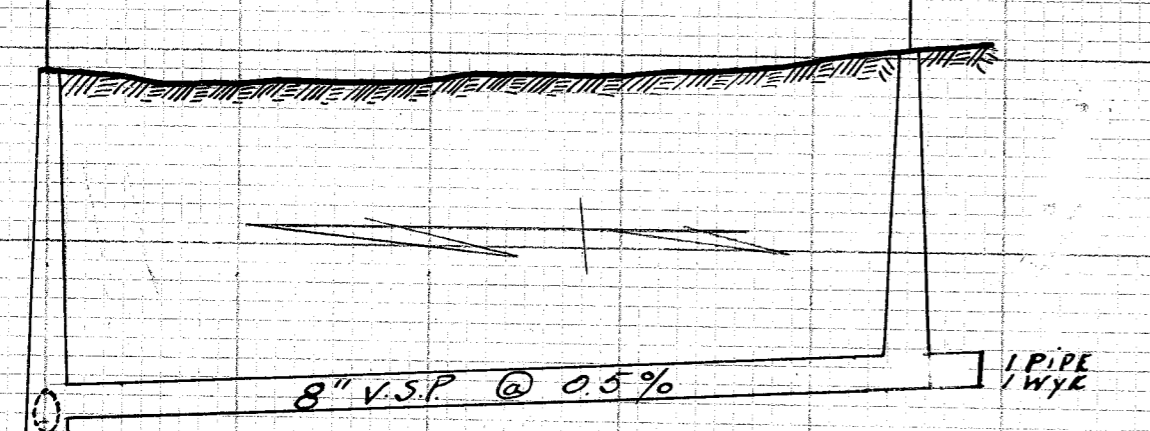


8TH ST. N.E. SAN. SEWER.
 FROM MATTHIAS AVE. N.E. TO
 IRVINGTON AVE. N.E.



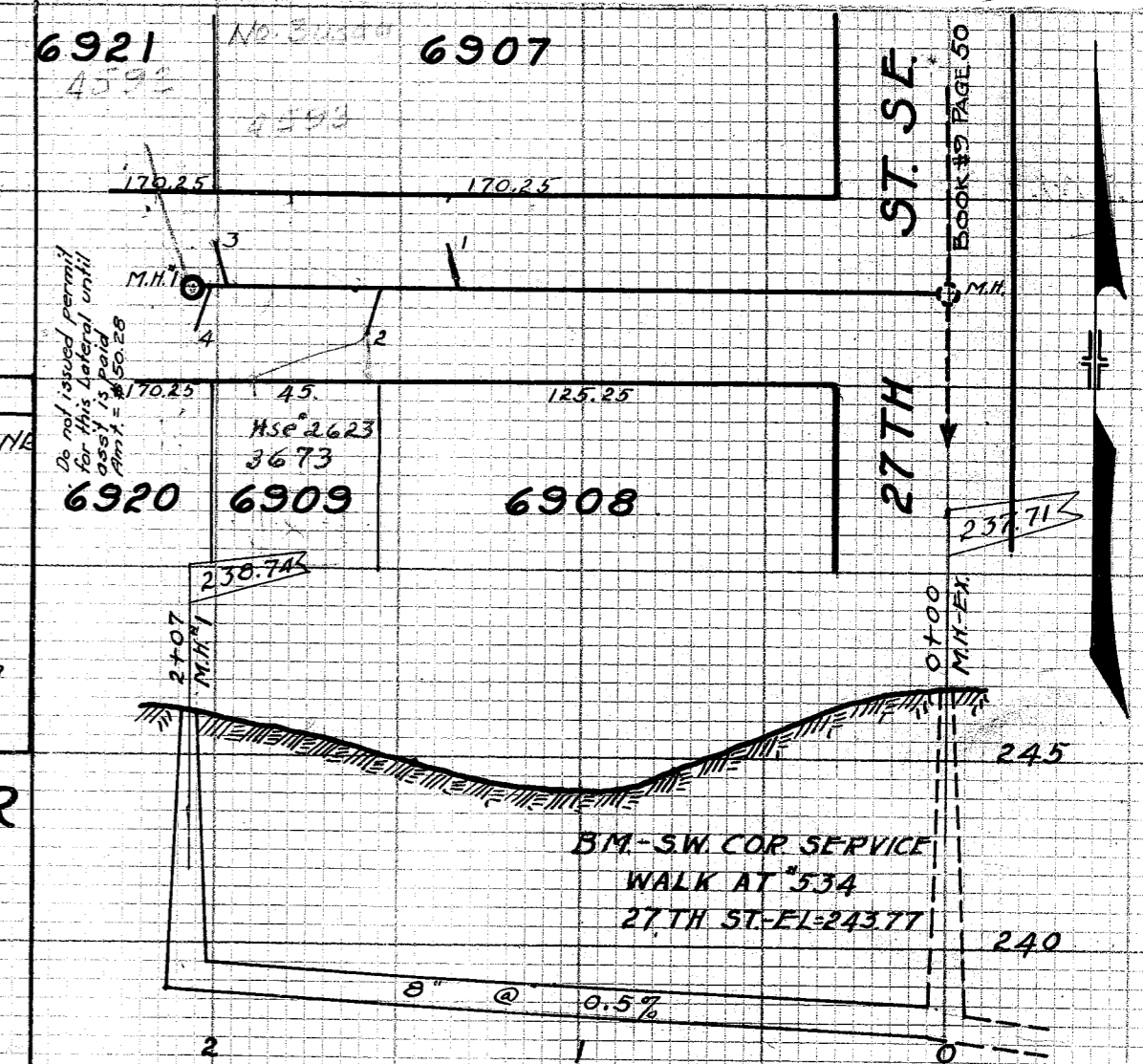
B.M. - HYD. COR. MATTHIAS AVE. & 8th ST. N.E. & N.E.
 Elev. - 176.17

LATERAL RECORD

LAT.	Lot No.	Side	Depth X	Station	Remarks
0+00			8"	0+00	E. of Matthias Ave. N.E.
2	7557	E	7' 5"	1+17 ⁵	2 PIPE
1	5252	W	7'	1+18 ⁵	BLIND WYE
4	7556	E	7' 5"	1+57 ⁵	2 PIPE
3	5253	W	7'	1+57 ⁵	BLIND WYE
M.H.#2			8 ⁵	2+22 ⁵	12' S. of H. curb
6	7553	E			1st R. & WYE South

8TH ST. N.E. SANITARY SEWER
 FROM MATTHIAS AVE. N.E. TO
 IRVINGTON AVE. N.E.

C.E. RICE - CITY ENGR.
 SAM JONES - CONST. ENGR.
 BUILT BY JULIUS WHITTMAN (1929)
 INSPECTOR - HARRY PIPER.
 PREL. NOTES - N.B. 85 Page 17
 CONST. NOTES - N.B. 95 Page 12
 FINAL NOTES - N.B. 98 Page 32
 INSPECTOR'S BOOK #156
 PLOTTED BY HARRY PIPER 9/26/29
 Green Nos. - Sewer Permits



LATERAL RECORD

LAT.	LOT NO.	SIDE	DEPTH	X	STATION	REMARKS
						FROM 27TH ST. SE. WEST
					0+00	27TH ST. SE
1	6907	N	6	12	1+37	
2	6909	S	6	12	1+59	
3	6921	N	6	12	2+01	
4	6920	S	6	12	2+06	
M.H.#1			7.5		2+07	

HAROLD AVE. SE.

FROM 27TH ST. SE. TO 26TH ST. SE.
 BUILT IN 1929 BY J. WHITTMAN
 C.E. RICE - CITY ENGR.
 SAM JONES - CONST. ENGR.
 CLARK ELSEA - INSPECTOR
 PRELIM. NOTES - N.B. 57 P. 33
 CONSTR. NOTES - N.B. 91 P. 70
 FINAL MEAS. - N.B. 94 P. 50
 INSPECTOR'S RECORD #121
 PLOTTED MCH. 6, 1930 BY E.G. POCOCK
 SCALE - 1" = 5' V.P.P. 1" = 40' H.C.P.