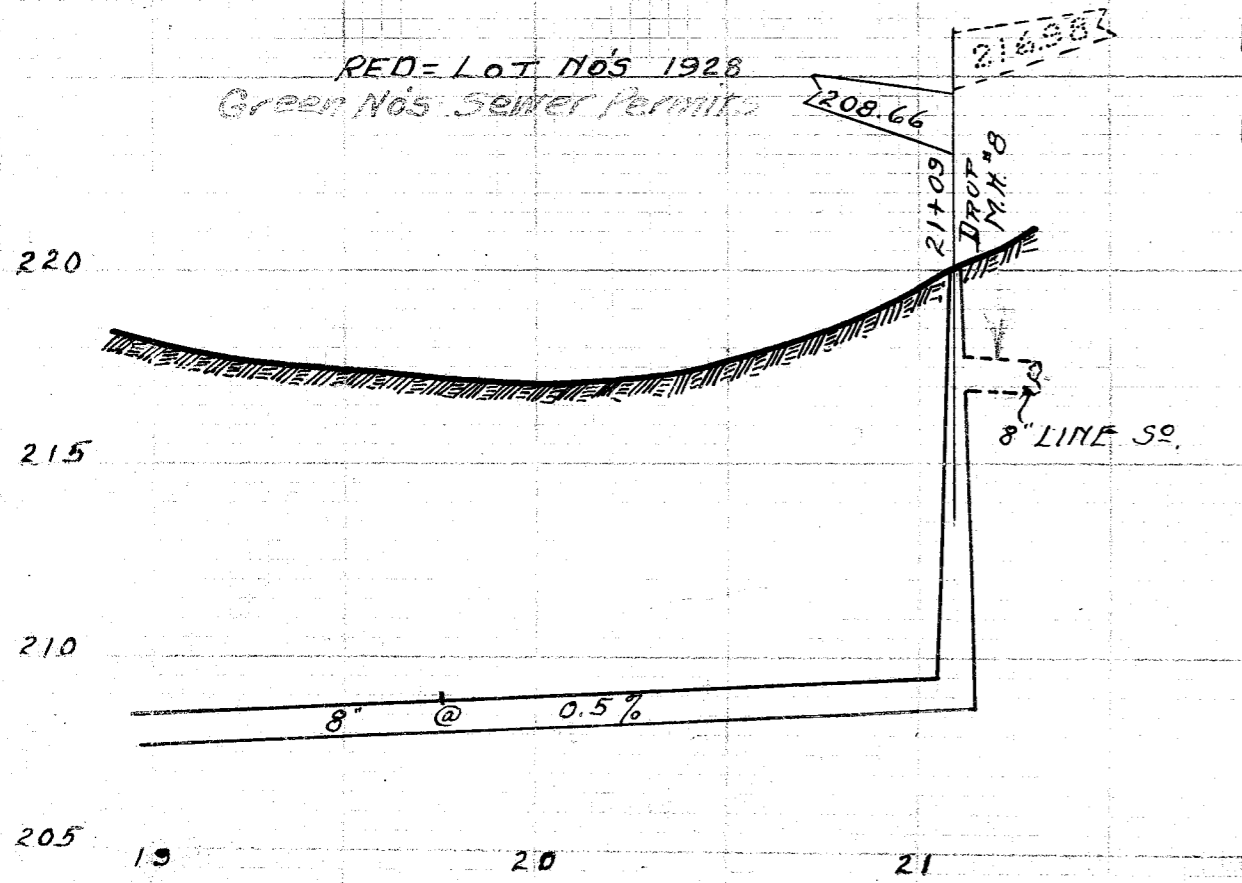


23RD ST. N. W. ~ CONTINUED ~



LATERAL RECORD

LAT.	LOT NO	SIDE	DEPTH	X	STATION	REMARKS
M.H. #1			11 1/2		0 + 05	BLIND WYE
2		E	9		0 + 30	"
1		W	9		0 + 32	"
4		E	8		0 + 92	"
3		W	8		0 + 94	"
6		E	8		1 + 50	"
5		W	8		1 + 52	"
8		E	8		2 + 09	"
7		W	8		2 + 11	"
10		E	8		2 + 70	"
9		W	8		2 + 72	"
M.H. #2			7 1/2		3 + 00	NO POLE - INSP. RECORD
12		E	9		3 + 32	"
11		W	9		3 + 34	"
14		E	10		3 + 91	"
13		W	10		3 + 93	"
16		E	9 1/2		4 + 53	(2' STACK)"
15		W	9 1/2		4 + 55	(2' STACK)"
17		E	9		4 + 81	(4' " ")"
18		W	9		4 + 84	(4' " ")"
20		E	9		4 + 84	(4' " ")"
19		W	9		5 + 54	(4' " ")"
M.H. #3			8 1/2		5 + 95	BLIND WYE - 2' STACK
22		E	11 1/2		6 + 00	BLIND WYE 2' STACK
21		W	8		6 + 32	"
24		E	8		6 + 53	"
23		W	8		7 + 01	"
26		E	7 1/2		8 + 12	"
25		W	7 1/2		8 + 20	"
28		E	7 1/2		8 + 60	"
M.H. #4			10 1/2		8 + 82	BLIND WYE 2' STACK
27		W	10		9 + 13	"
29	7454	E	6 1/2	14	9 + 81	"
30	7425	W	6 1/2	14	9 + 82	"
32	7426	E	6 1/2	14	10 + 23	"
31	7455	W	6 1/2	14	10 + 26	"
34	7427	E	6	14	10 + 74	"
33	7456	W	7	14	10 + 75	"
35	7457	E	7	14	11 + 23	"
36	7428	W	6	14	11 + 25	"
37	7458	E	7	14	11 + 75	"
38	7429	W	6 1/2	14	11 + 77	"
M.H. #5			12 1/2		12 + 02	BLIND WYE 2' STACK
39	7430	E	7	14	12 + 27	"
42	7431	W	6	14	12 + 77	"
41	7460	E	7	14	13 + 04	"
44	7432	W	6	14	13 + 28	"
43	7461	E	8	14	13 + 55	"
45	7462	W	7 1/2	14	13 + 76	"
46	7433	E	6	14	13 + 76	"
48	7434	W	5	14	14 + 25	"
47	7463	E	9	14	14 + 25	"
49	7464	W	8	14	14 + 74	"
50	7435	E	5	14	14 + 77	"
M.H. #6			13 1/2		15 + 03	BLIND WYE 2' STACK
52	7436	E	6	14	15 + 17	"
51	7465	W	7	14	15 + 21	"
54	7437	E	7	14	15 + 67	"
53	7466	W	7	14	15 + 72	"
56	7438	E	6	14	16 + 18	"
55	7467	W	8	14	16 + 25	"
57	7468	E	7	14	16 + 74	"
58	7439	W	6	14	17 + 00	"
59	7469	E	7	14	17 + 26	"
60	7440	W	6	14	17 + 55	"
62	7441	E	6	14	17 + 77	"
61	7470	W	7	14	17 + 77	"
M.H. #7			12 1/2		18 + 03	BLIND WYE 2' STACK
64	7442	E	6	14	18 + 17	"
63	7471	W	7	14	18 + 26	"
66	7443	E	6	14	18 + 73	"
65	7472	W	7	14	18 + 74	"
67	7473	E	7	14	19 + 19	"
68	7444	W	6	14	19 + 23	"
70	7445	E	5	14	19 + 75	"
69	7474	W	7	14	19 + 76	"
71	7475	E	9	14	20 + 21	"

23RD ST. N. W.
FROM BROOKFIELD TRUNK SOUTH 2109.
 BUILT IN 1929 BY JULIUS WITTMAN UNDER PLANS MADE BY AND SUPERVISION OF THE CITY ENGINEERING DEPARTMENT.
 C.E. RICE - CITY ENGR. PRELIM. NOTES N.B. 84 P. 56-7-58
 SAM JONES - CONST. ENGR. CONSTR. NOTES NB 89 P. 30-3-54-55-56
 J. MALONEY - INSPECTOR FINAL MEASURE. NB. 94 P. 1-11
 SCALE V-1"=5' H-1"=5' INSP. RECORD 157-158
 PLOTTED OCT. 9, 1929 BY E.G. POCOCK.