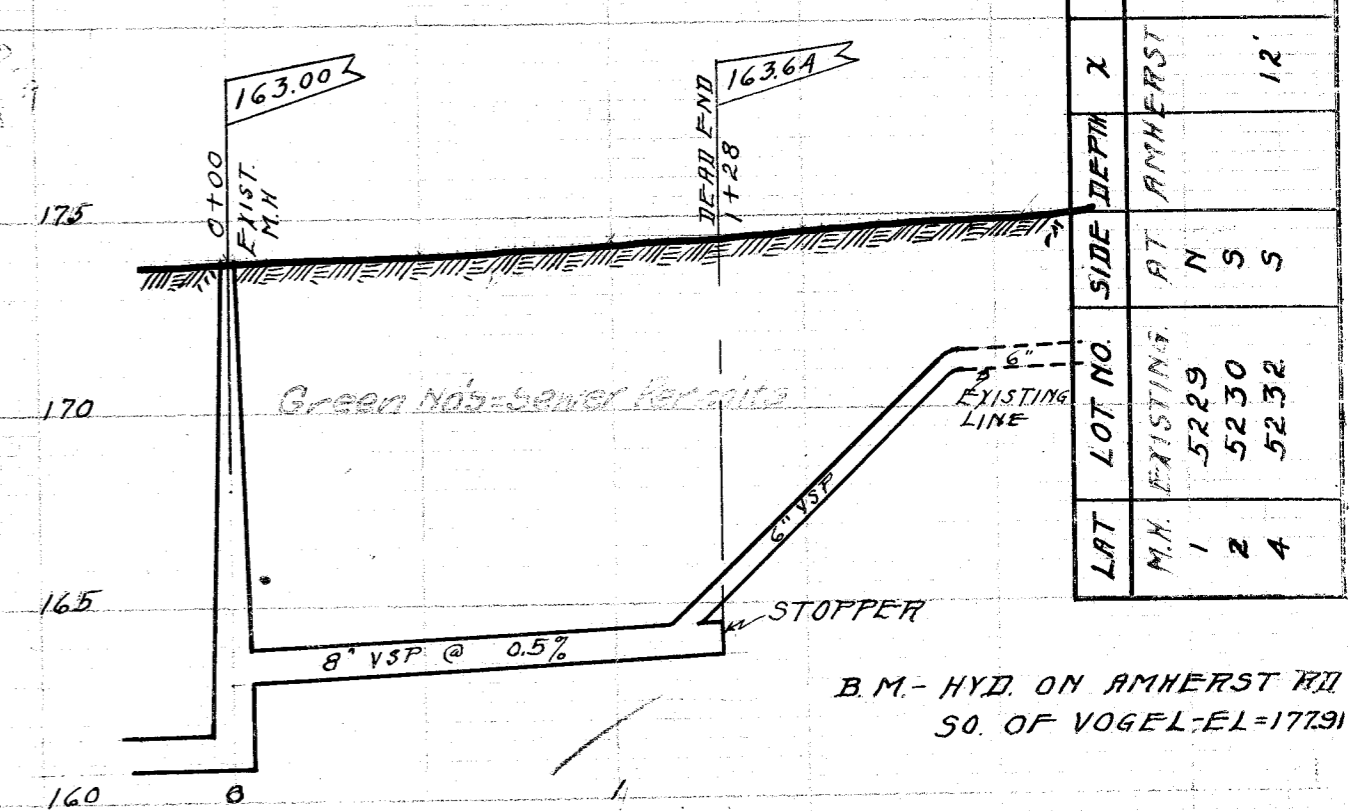
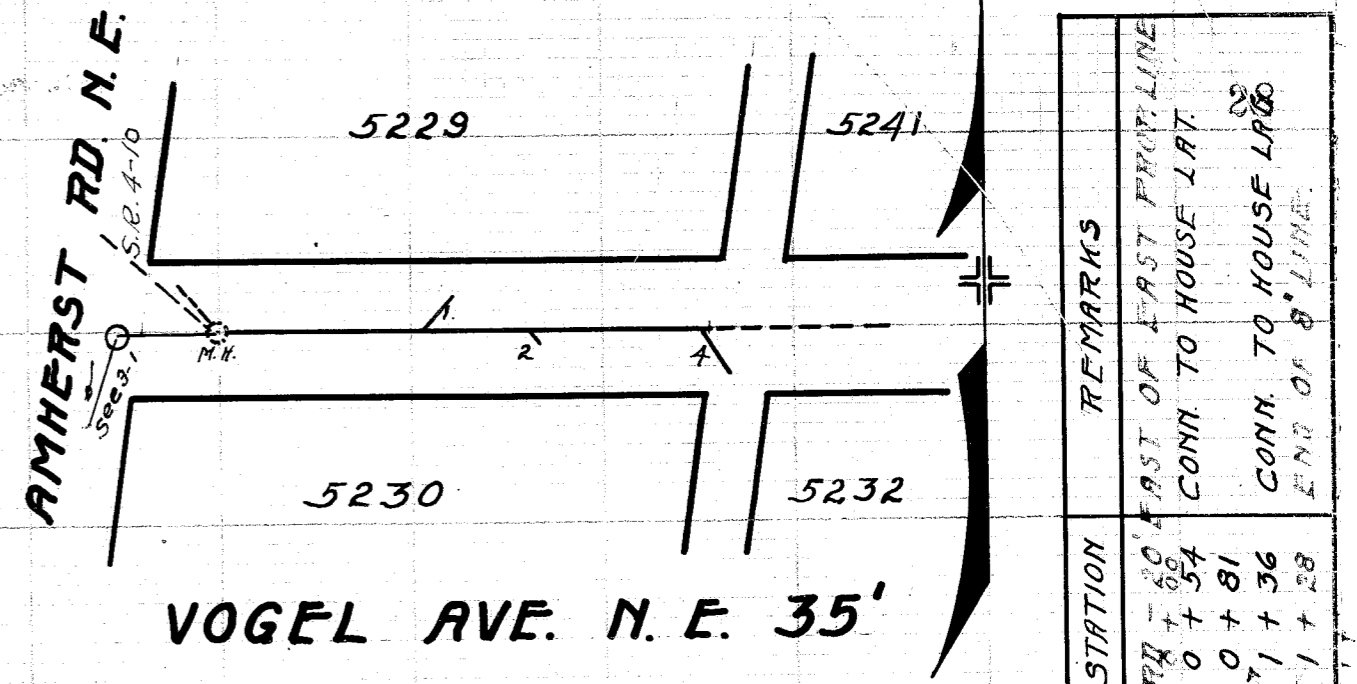


LATERAL RECORD

LAT	LOT NO	SIDE	DEPTH	X	STATION	REMARKS
	EXIST. M.H. AT 17TH ST				0 + 00	BEGIN. NEW CONSTRUCTION
1	2823	N	6	10	0 + 62	
3	2822	N	6	10	1 + 32.5	
5	2821	N	6	11	1 + 50.5	
2	0.L. 269	S	5.5	24	1 + 76	
7	2820	N	6	9	2 + 11	
4	0.L. 269	S	5.5	24	2 + 49	
9	2819	N	6	9	2 + 64	
			6.4			
6	10342	S	5.5	24	3 + 01	
11	2818	N	6	8	3 + 12	
8	0.L. 269	S	6.33	24	3 + 64	
13	10326	N	6.33	8	3 + 73	
15	10325	N	7	8	4 + 24	
10	10341	S	6.44	24	4 + 24	
12	10340	S	7	24	4 + 74	
17	10325	N	7	8	4 + 79	
14	10340	S	7	24	5 + 22	
19	10324	N	7	8	5 + 26	
16	0.L. 268	S	7	24	5 + 74	
21	0.L. 259	N	7	8	5 + 76	
			5.2		6 + 00	
18	0.L. 268	S	7.5	24	6 + 28	
23	0.L. 259	N	7.5	8	6 + 30.5	
20	10339	S	7.5	24	6 + 75	
25	0.L. 259	N	7.5	8	6 + 86	
22	10339	S	7	24	7 + 19	
27	0.L. 259	N	8	8	7 + 38	
24	0.L. 267	S	7	24	7 + 60	
29	10323	N	7.5	8	8 + 01	
26	0.L. 267	S	7	24	8 + 20	
31	0.L. 260	N	8	8	8 + 49.5	
28	0.L. 267	S	7	24	8 + 65	
33	0.L. 260	N	8	8	8 + 95	
			10.3		9 + 01	
30	0.L. 267	S	7	24	9 + 06	
35	0.L. 260	N	8	8	9 + 42	
32	0.L. 267	S	7	24	9 + 57	
37	0.L. 260	N	7	8	9 + 91.5	
34	0.L. 266	S	7	24	10 + 05	
36	"	S	7	24	10 + 26.5	
39	0.L. 260	N	7.5	8	10 + 41	
41	"	N	7.5	8	10 + 85.5	
38	10338	S	7	24	11 + 03	
43	0.L. 260	N	7.5	8	11 + 50	
40	10337	S	7	24	11 + 72.5	
45	0.L. 260	N	7.5	8	11 + 94	
			11.4		12 + 00	
42	10337	S	7	24	12 + 29	
47	0.L. 260	N	7	8	12 + 49	
44	10336	S	7	24	12 + 81	
49	0.L. 260	N	7.5	8	12 + 95	
46	0.L. 265	S	7	24	13 + 28	
51	0.L. 260	N	7	8	13 + 75	
48	0.L. 265	S	7	24	13 + 94	
50	10335	S	7	24	14 + 62	
			8.9		15 + 00	
52	10335	S	7	24	15 + 21	
54	0.L. 264	S	7	24	15 + 77	
56	"	S	7	24	16 + 27	
58	"	S	7	24	16 + 75	
60	"	S	7	24	17 + 27	
			9.2		17 + 50	
62	0.L. 264	S	7	24	17 + 92	
64	"	S	7	24	18 + 91	
66	"	S	7	24	19 + 39	
68	10334	S	7	24	19 + 85	
70	"	S	7	24	20 + 30	
			9.6		20 + 69	
72	0.L. 263	S	7	24	20 + 71	



TREMONT AVE. S. W. FROM 17TH ST. S. W. TO 23RD ST. N. W.

BUILT IN 1929 BY P.E. BICKEL UNDER PLANS MADE BY G. SUPERVISION OF THE CITY ENGINEERING DEPT.
 C.E. RICE - CITY ENGR. PREL. NOTES - N.B. 55 P41-42-45
 SAM JONES - CONSTR. ENGR. CONST. NOTES - N.B. 89 P49-50-51-52
 JOHN EHMER - INSPECTOR. FINAL MEAS. - N.B. 86 P 76-77
 SCALE V-1"=5' H-1"=50' INSP. RECORD - 156
 PLOTTED OCT 10, 1929 BY E.G. POCOCK

VOGEL AVE., N. E. FROM AMHERST RD. EAST 128'

BUILT IN 1928 BY JULIUS WITTMAN UNDER SUPERVISION OF THE CITY ENGR. DEPT. C.E. RICE CITY ENGR. SAM JONES CONSTR. ENGR. J. EHMER INSPECTOR. CONST. NOTES N.B. 81 PG 61. FINAL MEAS. N.B. 79 PG 41. SCALE V-1"=5' H-1"=50' PLOTTED OCT. 23, 1929 BY E.G. POCOCK.

LAT	LOT NO.	SIDE	DEPTH	X	STATION	REMARKS
M.H. 1	EXISTING 5229	N			0 + 69	EAST OF EAST PROFILE
2	5230	S			0 + 54	CONN. TO HOUSE LAT.
4	5232	S		12'	0 + 81	CONN. TO HOUSE LAT.
					1 + 36	END OF 8" LINE.