

NO	DATE	DESCRIPTION	BY
1	6/06	REVISIONS PER CITY UPDATE PER HLE	

SANITARY SEWER EXTENSION
PLAN AND PROFILE
STA. 6+00 TO 11+16

Hettler Largent
Engineering LLC
Civil & Construction Consultants
1225 North Main Street - Suite A - North Canton, OH 44720
PH: 330-966-1776 www.hettler-largent-eng.com



SOUTH MASSILLON
SANITARY TRUNK SEWER EXTENSION
CITY OF MASSILLON
STARK COUNTY, OHIO

IF THE EXISTING SWALE LOCATED ALONG THE NORTH SIDE OF THE PROPOSED
SANITARY SEWER IS DISTURBED DURING COMPLETION OF THESE IMPROVEMENTS, IT
SHALL BE RESTORED TO ITS ORIGINAL CONDITION BY THE CONTRACTOR, AS APPROVED
BY THE CITY.

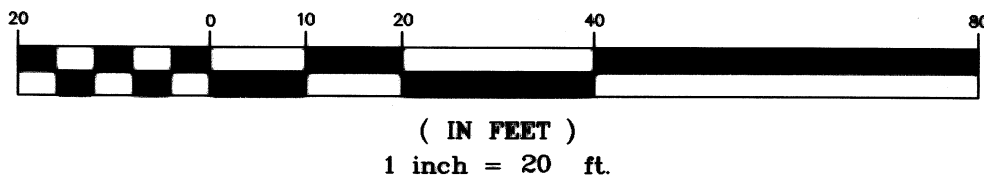
R.H. McLAUGHLIN, ET AL
PARCEL NO. 4301171
VOL. 2908, PAGE 132

O.L. 569
MILLER LAND DEVELOPMENT, LTD.
O.R.I. 97024283

WHEELING &
LAKE ERIE RR

O.L. 570
RAILROAD

GRAPHIC SCALE



() AS-BUILT DATA WAS
COMPLETED BY ROBERT L. AKINS,
P.S. - AKINS LAND SURVERING.

NOTES:

1. THE CONTRACTOR SHALL PREVENT SOIL EROSION IN THE EXISTING DITCH/SWALE RESULTING FROM THE PROPOSED IMPROVEMENTS. SEDIMENT CONTROL STRUCTURES/DEVICES SHALL BE INSTALLED IN ACCORDANCE WITH THE MANUAL RAINWATER AND LAND DEVELOPMENT OHIO'S STANDARDS FOR STORMWATER MANAGEMENT LAND DEVELOPMENT AND URBAN STREAM PROTECTION, SECOND EDITION DATED 1996. THE CONTRACTOR WILL ALSO RESTORE THE DITCH/SWALE TO ITS EXISTING CONDITION OR TO THE SATISFACTION OF THE ENGINEER.
2. THE CONTRACTOR SHALL STAY WITHIN THE EASEMENTS PROVIDED AT ALL TIMES. NO MATERIAL SHALL BE STORED NOR ANY WORK PERFORMED OUTSIDE LIMITS OF EASEMENTS. DISTURBANCE OF EXISTING FEATURES AND/OR IMPROVEMENTS SHALL BE KEPT TO AN ABSOLUTE MINIMUM AND AS APPROVED BY THE ENGINEER/OWNER.
3. CONTRACTOR TO REPLACE EXISTING GRAVEL DISTURBED DURING CONSTRUCTION ALONG THE ROUTE OF PROPOSED SANITARY SEWER ON THE HANSON AGGREGATES MIDWEST, INC. PROPERTY. REPLACEMENT MATERIAL SHALL CONSIST OF 6" OF 0007 304 AGGREGATE BASE. MATERIAL AND LIMITS OF REPLACEMENT MUST BE APPROVED BY HANSON AGGREGATES MIDWEST, INC. AND THE ENGINEER. A LUMP SUM PAYMENT ITEM HAS BEEN INCLUDED IN THE ESTIMATED QUANTITIES FOR THIS GRAVEL REPLACEMENT.

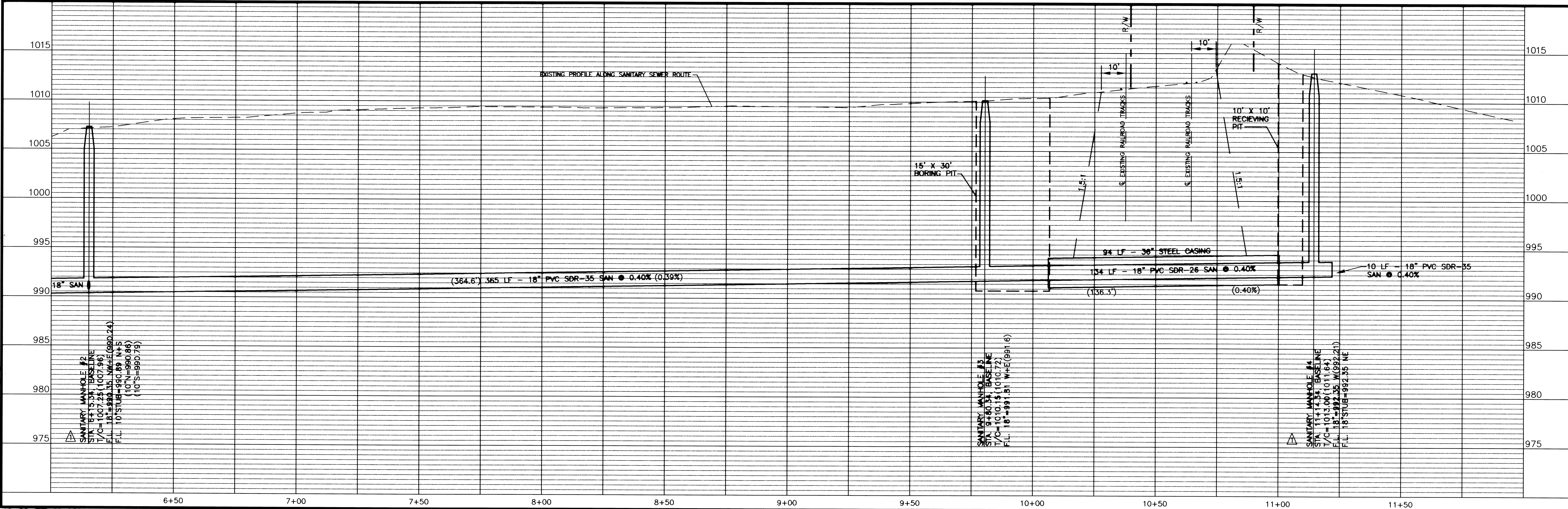
HANSON AGGREGATES MIDWEST, INC.
PARCEL NO. 4312772

SEE SHEET 3 OF 4
MATCH LINE - STA. 6+00

SANITARY MANHOLE #2
STA. 6+15.34, BASELINE
T/C=1007.25 (1007.96)
F.L. 18"=990.35 NW+E (990.24)
F.L. 10"STUB=990.89 N+5
(10"N=990.86)
(10"S=990.79)

SANITARY MANHOLE #3
STA. 9+80.34, BASELINE
T/C=1010.15 (1010.72)
F.L. 18"=991.81 W+E (991.67)

SANITARY MANHOLE #4
STA. 11+14.34, BASELINE
T/C=1013.00 (1011.64)
F.L. 18"=992.35 W (992.21)
F.L. 18"STUB=992.35 NE



(6+00 TO 11+16)