

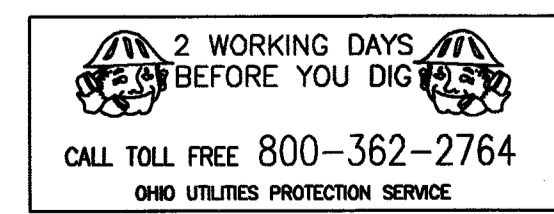
**ZONING:**  
 OUT LOT 941 = RM-1 MULTI-FAMILY RESIDENTIAL  
 LOT NO. 15510 = R-1 SINGLE FAMILY

**NOTES:**  
 1. ALL BUILDING DOWNSPOUTS TO BE CONNECTED TO STORM SEWER  
 2. PARKING LOT TO BE EITHER CONCRETE OR ASPHALT PAVEMENT.

**AREA**  
 OUT LOT 941 = 2.069 ACRES  
 LOT NO. 15510 = 0.228 ACRES  
 TOTAL = 2.297 ACRES

**PARKING UNIT SUMMARY:**  
 GARAGE SPACES: 24  
 PARKING SPACES: 26  
 TOTAL PARKING: 50  
 PARKING PER UNIT: 2.083

1409 AMHERST ROAD LLC  
 PT. O.L. 519

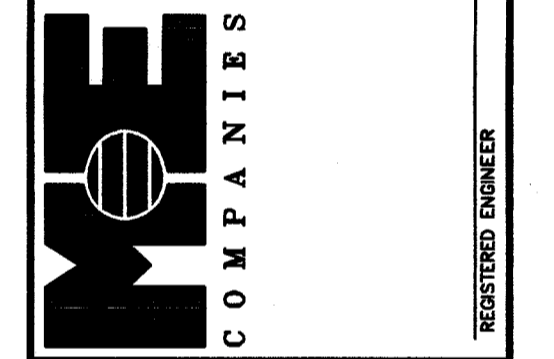


**BENCH MARK:**  
 EXISTING SANITARY MANHOLE LOCATED APPROXIMATELY 80' NORTHEAST OF PROPERTY.  
 ELEVATION = 103.61'

- ① R=501.46  
L=90.13  
Tan=45.19  
Δ=10°17'53"  
CH=90.01'  
BCH=N76°09'49"W
- ② R=643.48  
L=177.89  
Tan=89.51  
Δ=15°50'21"  
CH=177.32'  
BCH=N 62°48'55" W

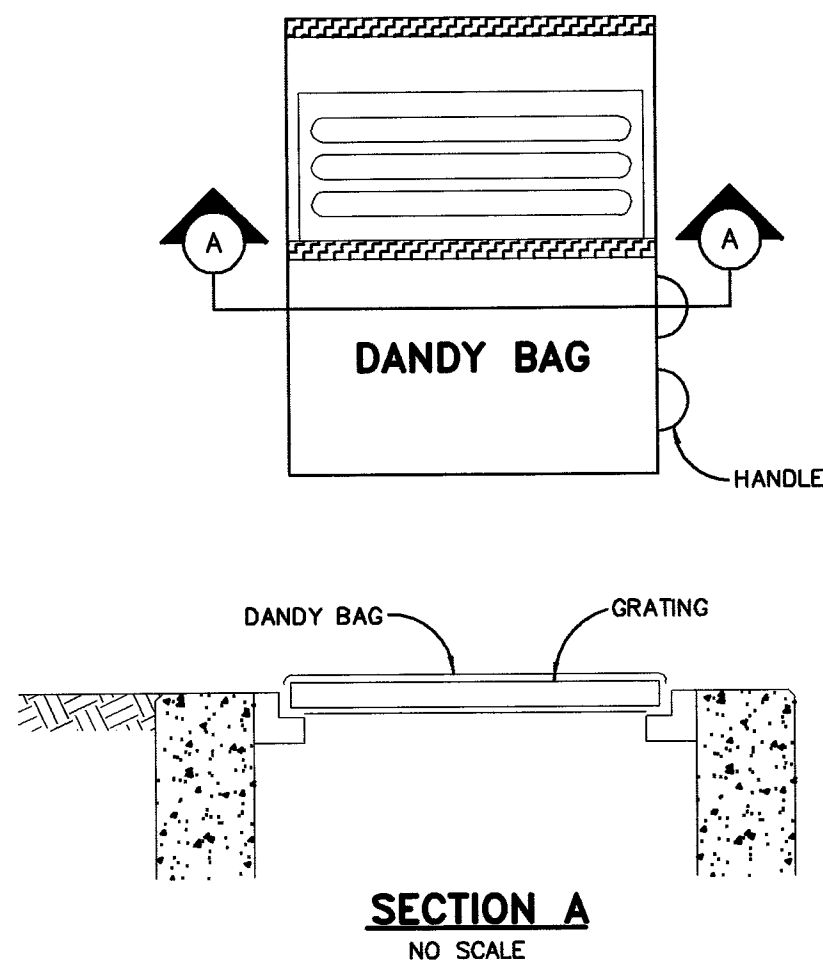
REVISIONS	
DATE	DESCRIPTION
12/4/02	AGW UTILITIES

Site Development Group  
 4150 Bairden Village, Suite 104  
 Canton, OH 44705  
 330-481-9000  
 330-481-9001  
 Fax 481-9000



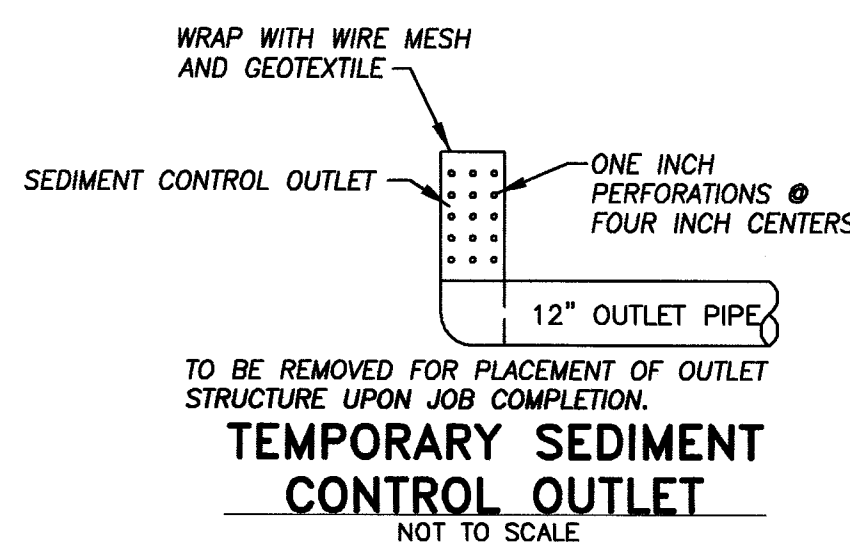
MASSILLON, OHIO  
**AMHERST RIDGE**  
 OUT LOT 941, AND LOT NUMBER 15510  
**SITE PLAN**

DESIGN	DRAFT	CHECK
EMS	AGW	DDF
JOB NO.: 02-394		
DATE: NOVEMBER 2002		
SCALE: HORIZONTAL: 1" = 30' VERTICAL: N/A		
PRINT DATE:		

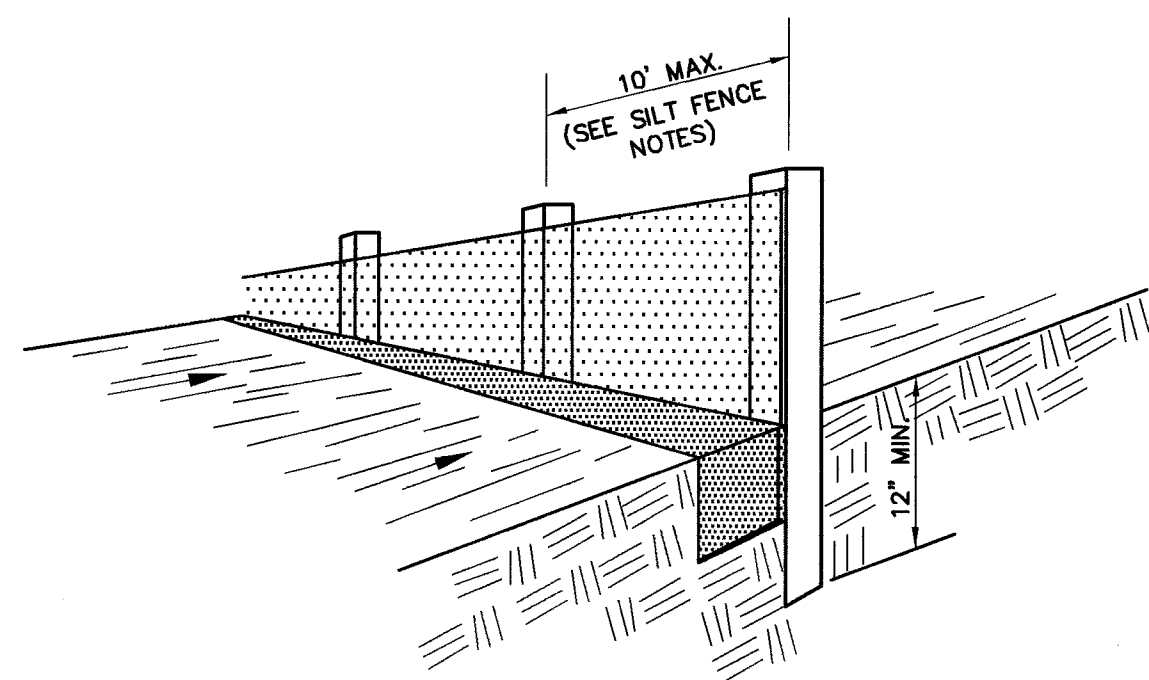


**INSTALLATION:** STAND GRATE ON END. PLACE DANDY BAG OVER GRATE. FLIP GRATE OVER SO THAT OPEN END IS UP. PULL UP SLACK. TUCK FLAP IN. BE SURE END OF GRATE IS COMPLETELY COVERED BY FLAP OR DANDY BAG WILL NOT FIT PROPERLY. HOLDING HANDLES. CAREFULLY PLACE DANDY BAG WITH GRATE INSERTED INTO CATCH BASIN FRAME SO THAT RED DOT ON THE TOP OF THE DANDY BAG IS VISIBLE.

**MAINTENANCE:** AFTER SILT HAS DRIED, REMOVE IT FROM THE SURFACE OF DANDY BAG WITH BROOM.

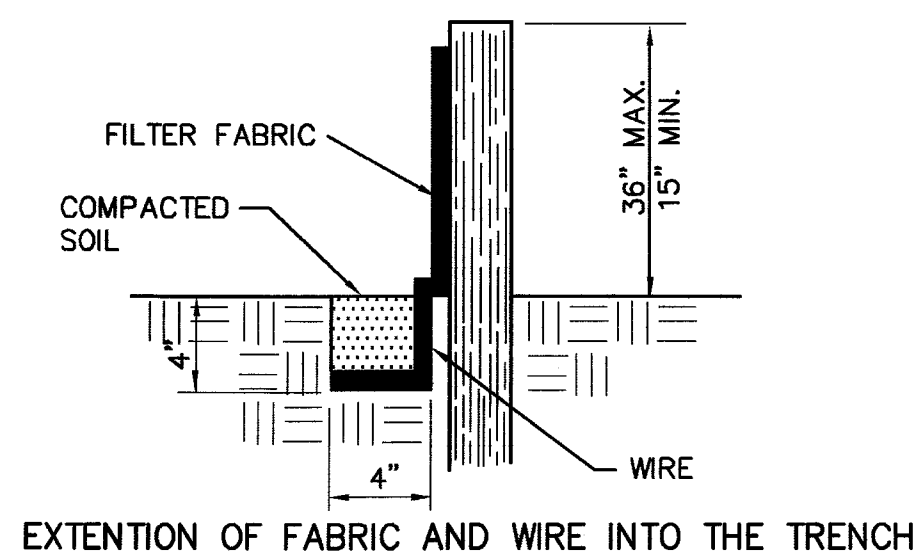


**TEMPORARY SEDIMENT CONTROL OUTLET**  
NOT TO SCALE

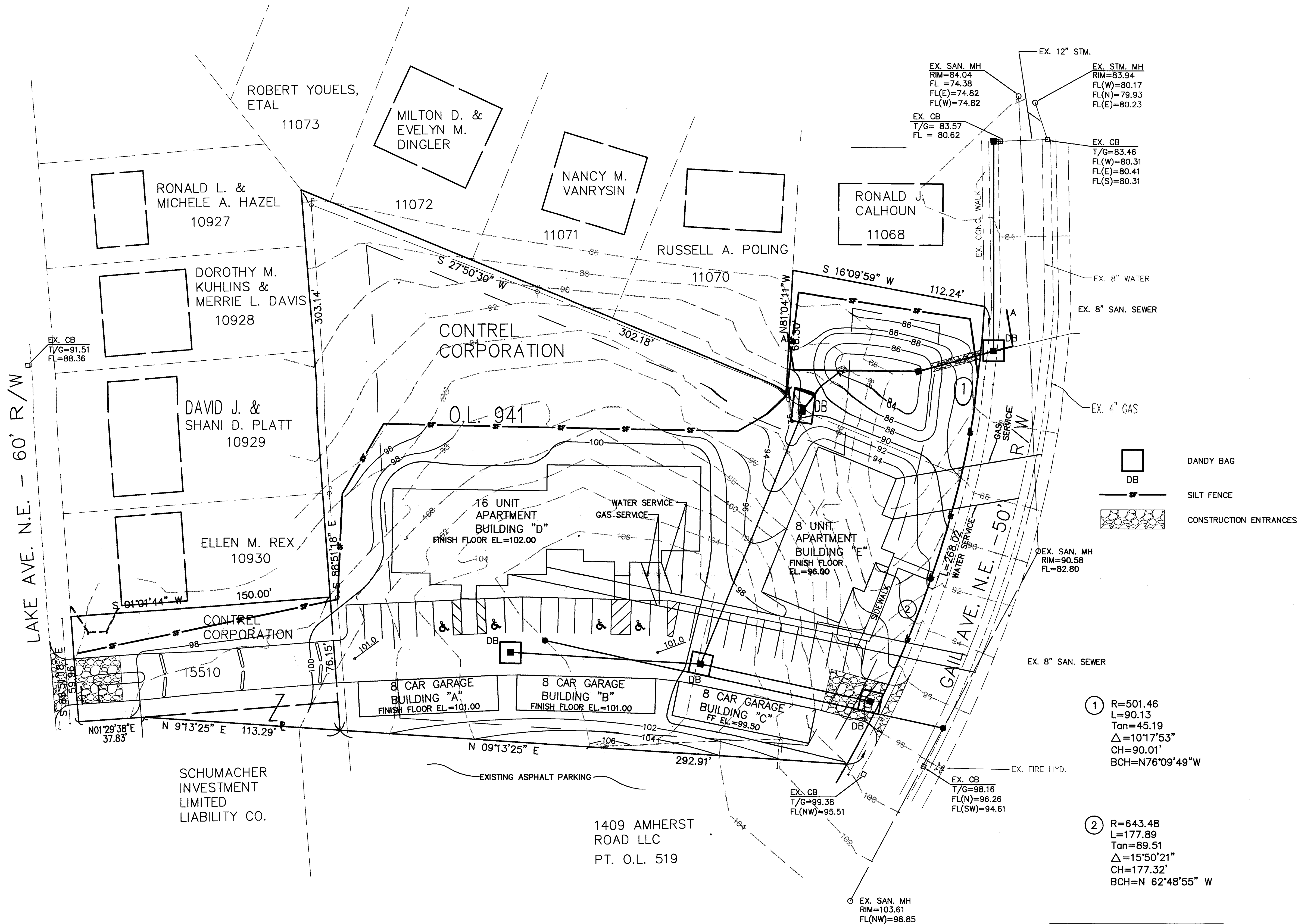


**SILT FENCE DETAIL**

NO SCALE



**EXTENSION OF FABRIC AND WIRE INTO THE TRENCH**



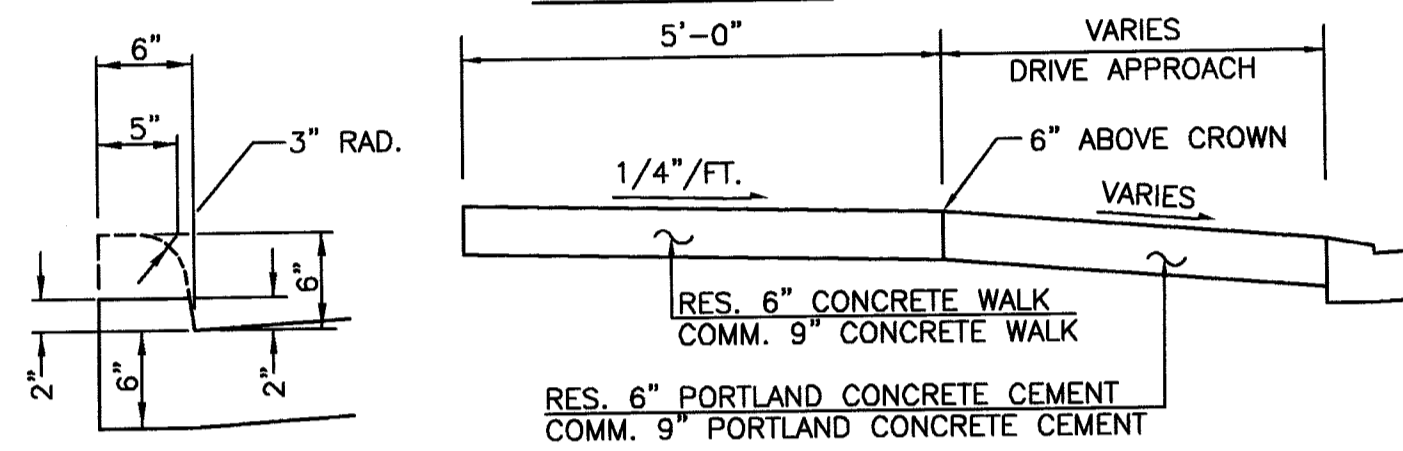
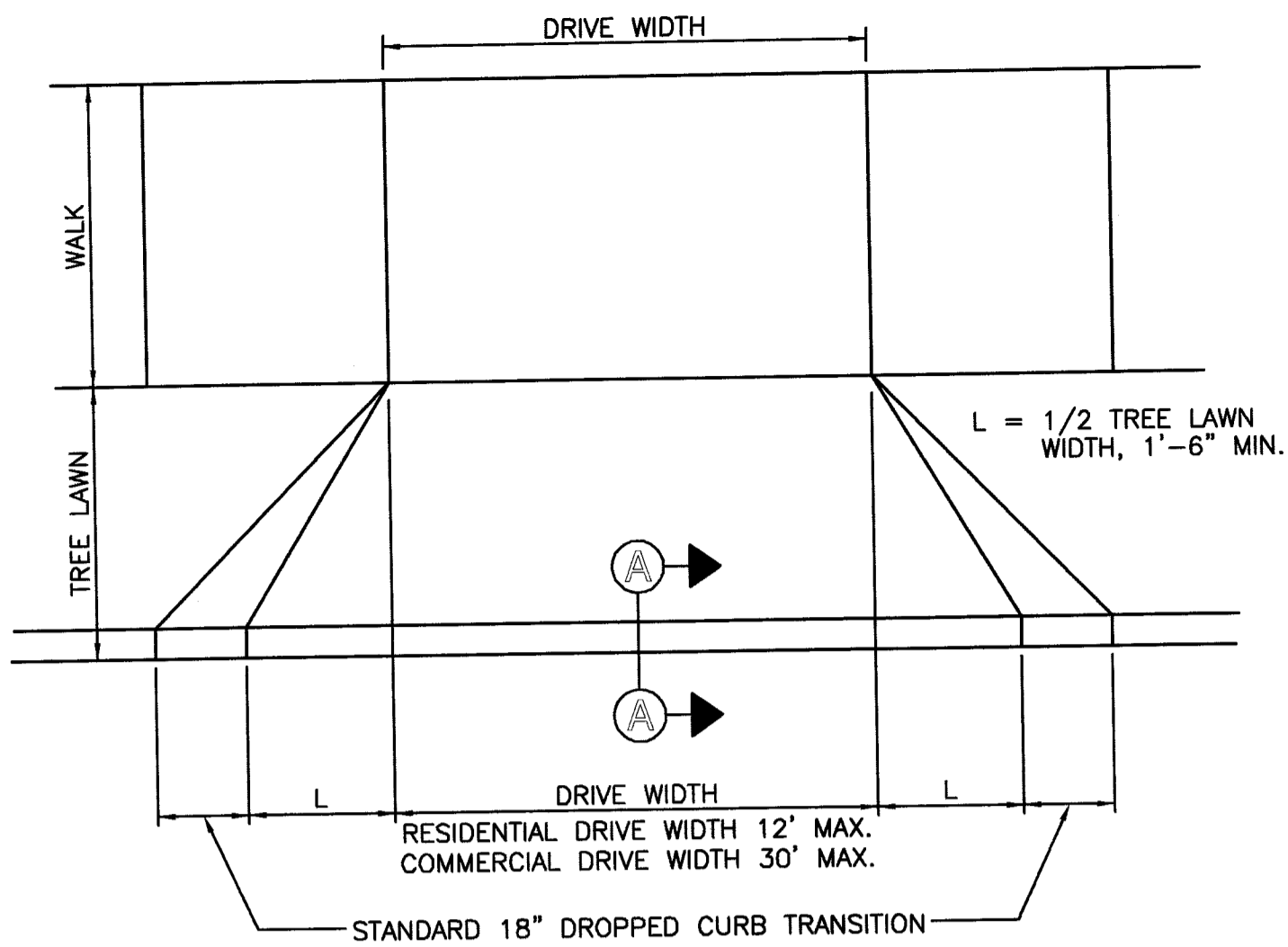
- ① R=501.46  
L=90.13  
Tan=45.19  
Δ=10°17'53"  
CH=90.01'  
BCH=N76°09'49"W
- ② R=643.48  
L=177.89  
Tan=89.51  
Δ=15°50'21"  
CH=177.32'  
BCH=N 62°48'55" W

**BENCH MARK:**   
EXISTING SANITARY MANHOLE LOCATED APPROXIMATELY 80' NORTHEAST OF PROPERTY.  
ELEVATION = 103.61'

2 WORKING DAYS BEFORE YOU DIG  
CALL TOLL FREE 800-362-2764  
OHIO UTILITIES PROTECTION SERVICE

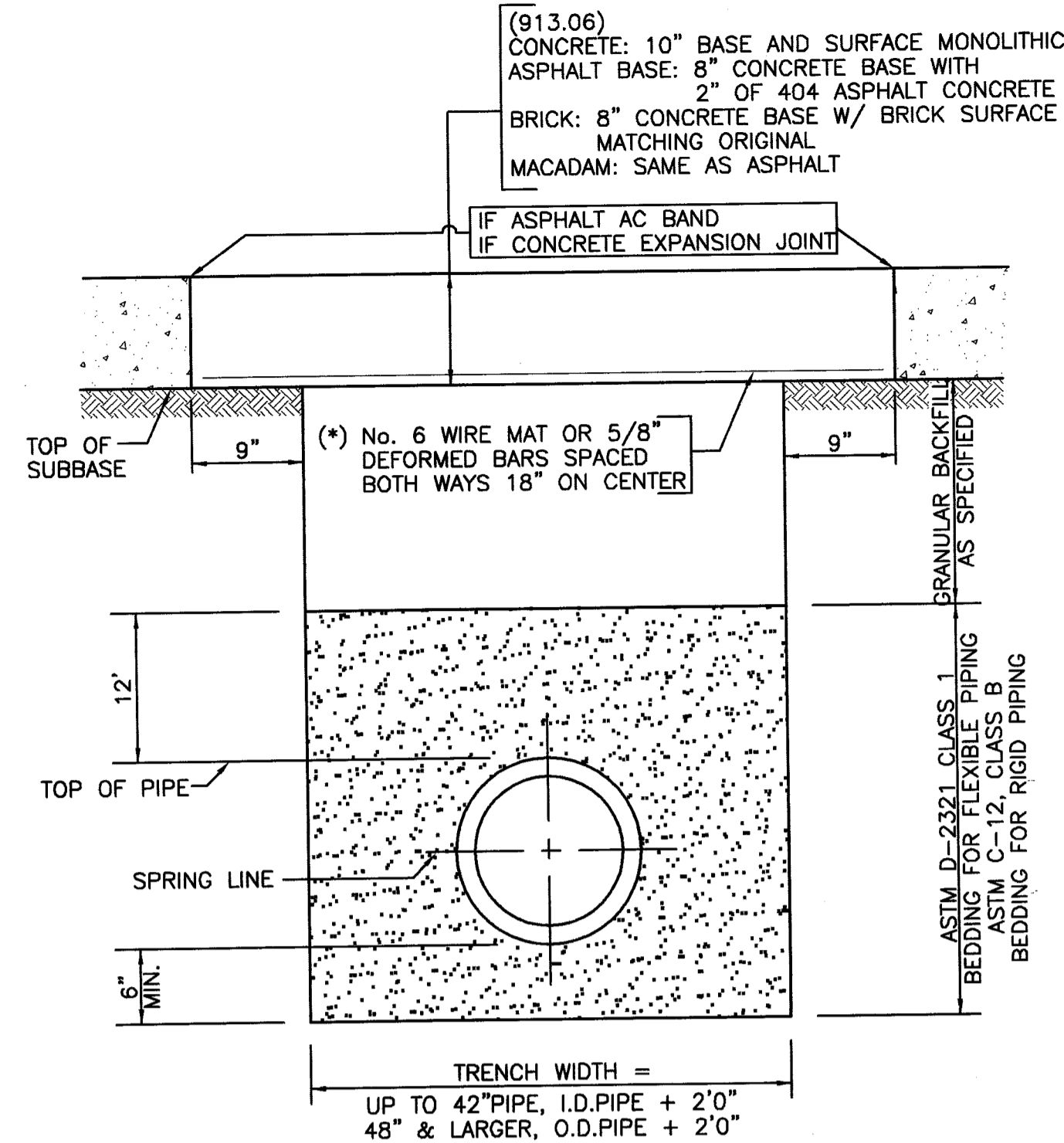
<b>REVISIONS</b>		
DATE	DESCRIPTION	
12/4/02	AGW EROSION CONTROL PLAN	
 <b>ME COMPANIES</b>		
<b>LOCATION, OHIO</b> <b>AMHERST RIDGE</b> OUT LOT 941, AND LOT 15510 <b>EROSION CONTROL PLAN</b>		
DESIGN	DRAFT	CHECK
EMS	AGW	DDF
JOB NO.: 02-394		
DATE: NOVEMBER 2002		
SCALE:		
HORIZONTAL: 1" = 30'		
VERTICAL: N/A		
PRINT DATE:		
SHEET NO.: 2/3		

J:\Land projects\02-394 GAL AME\wg\2394.ec.dwg by:agw on 12/04/2002 @ 09:35:43 am ~ for M-E Companies, Inc.



**DRIVEWAY APPROACH DETAIL**

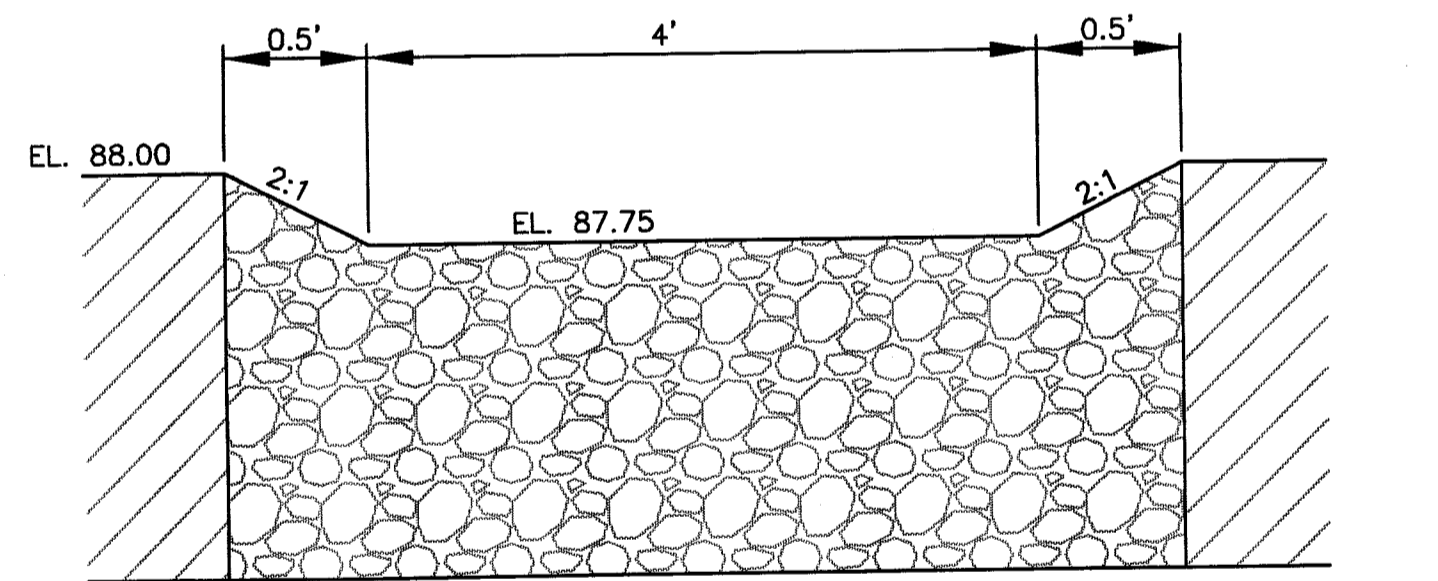
ANY DEVIATION FROM THIS MUST BE APPROVED BY THE CITY ENGINEER.  
CONCRETE SHALL BE 4000 PSI CLASS C



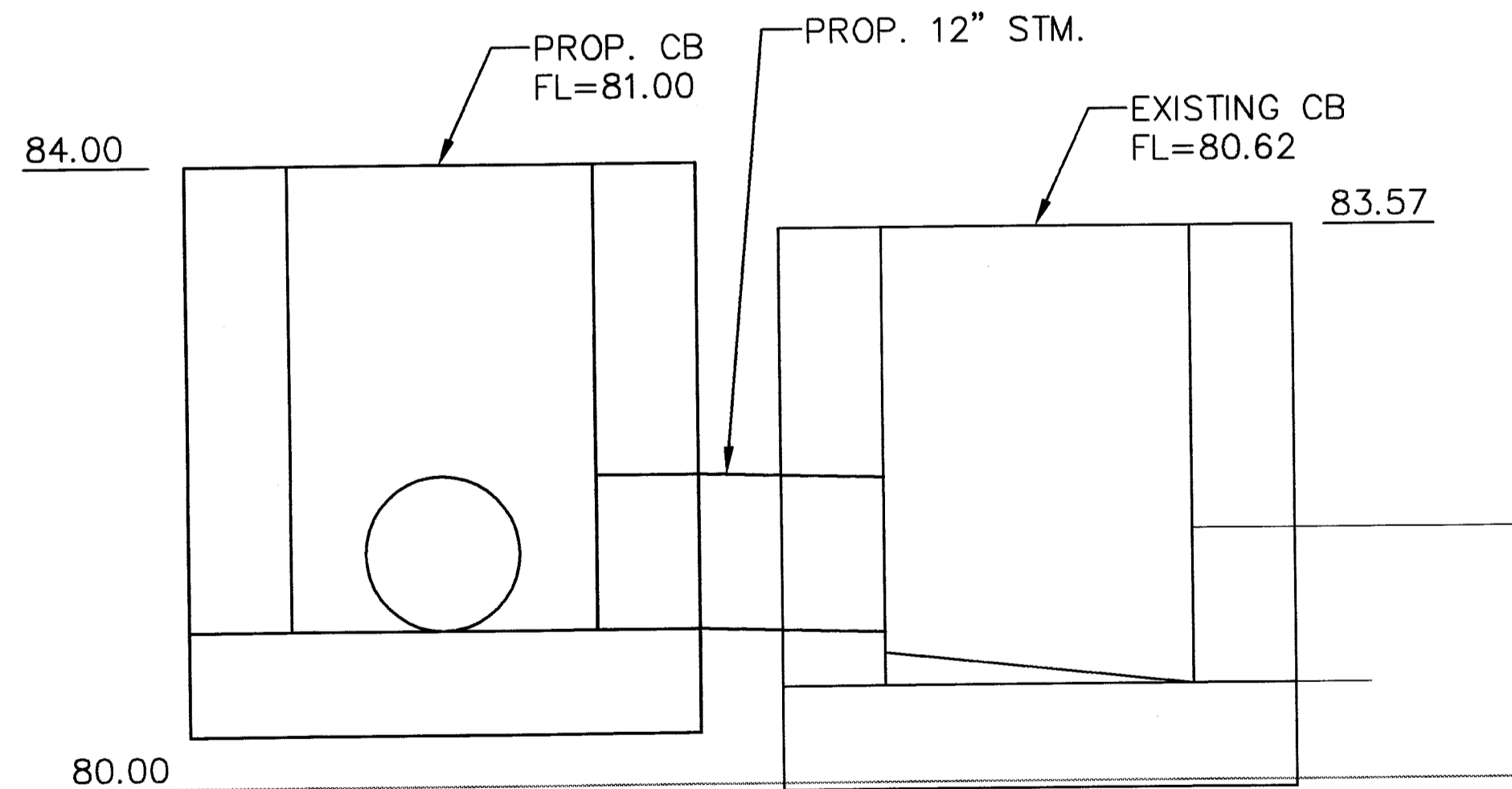
NOTES  
(\* MUST BE USED WHEN WIDTH OF TRENCH IS GREATER THAN 3' AT THE SUBBASE LEVEL)

CONCRETE BASE SHALL BE OF 1:2:4, 6 BAG MIX, PORTLAND CEMENT CONCRETE USING HIGH EARLY STRENGTH CEMENT AND IT MUST BE CURED AT LEAST 48 HRS.

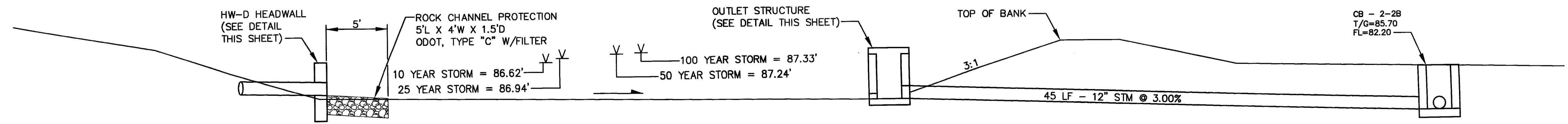
**OPEN CUT DETAIL**



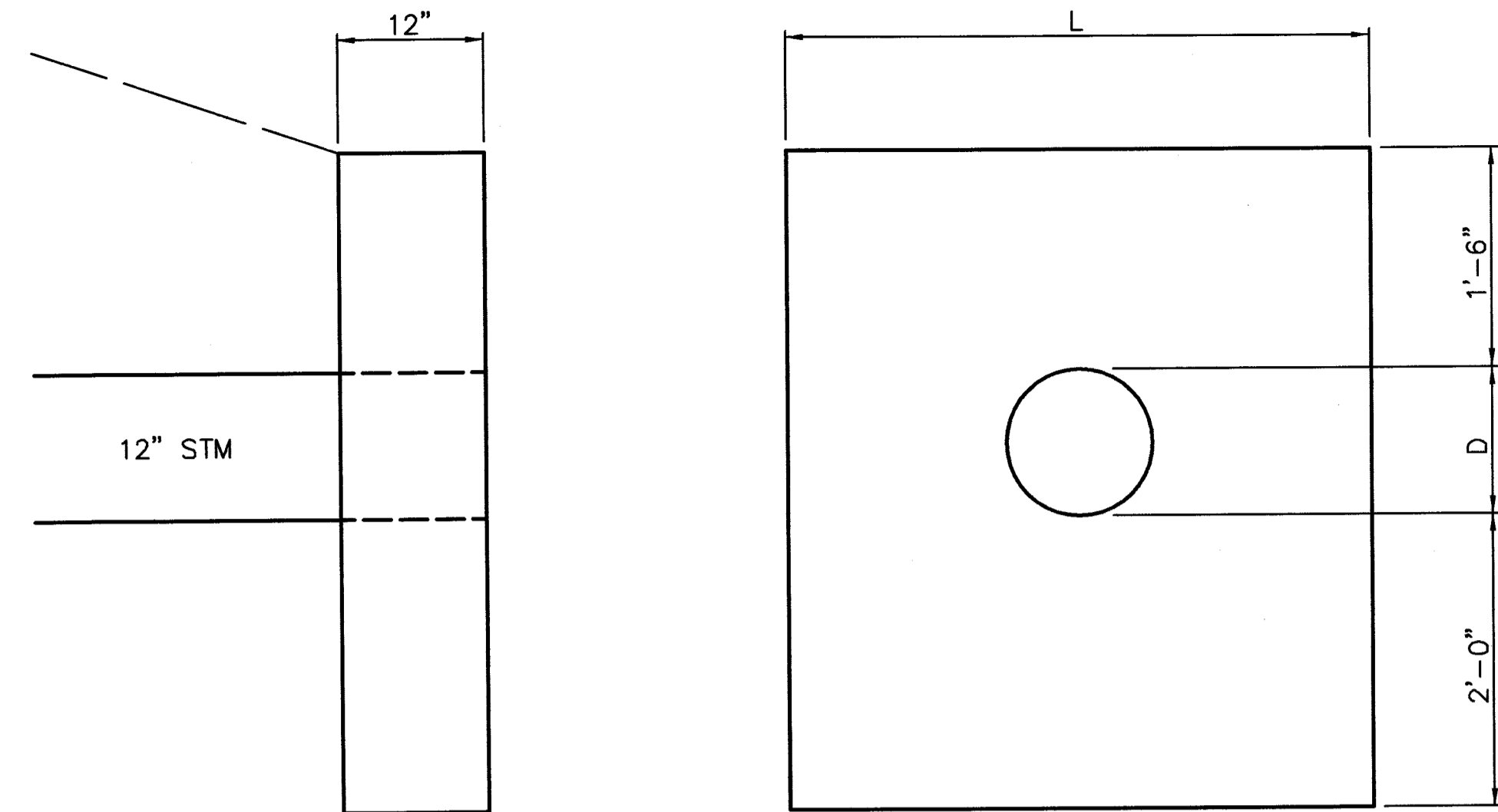
**EMERGENCY SPILLWAY CROSS-SECTION**



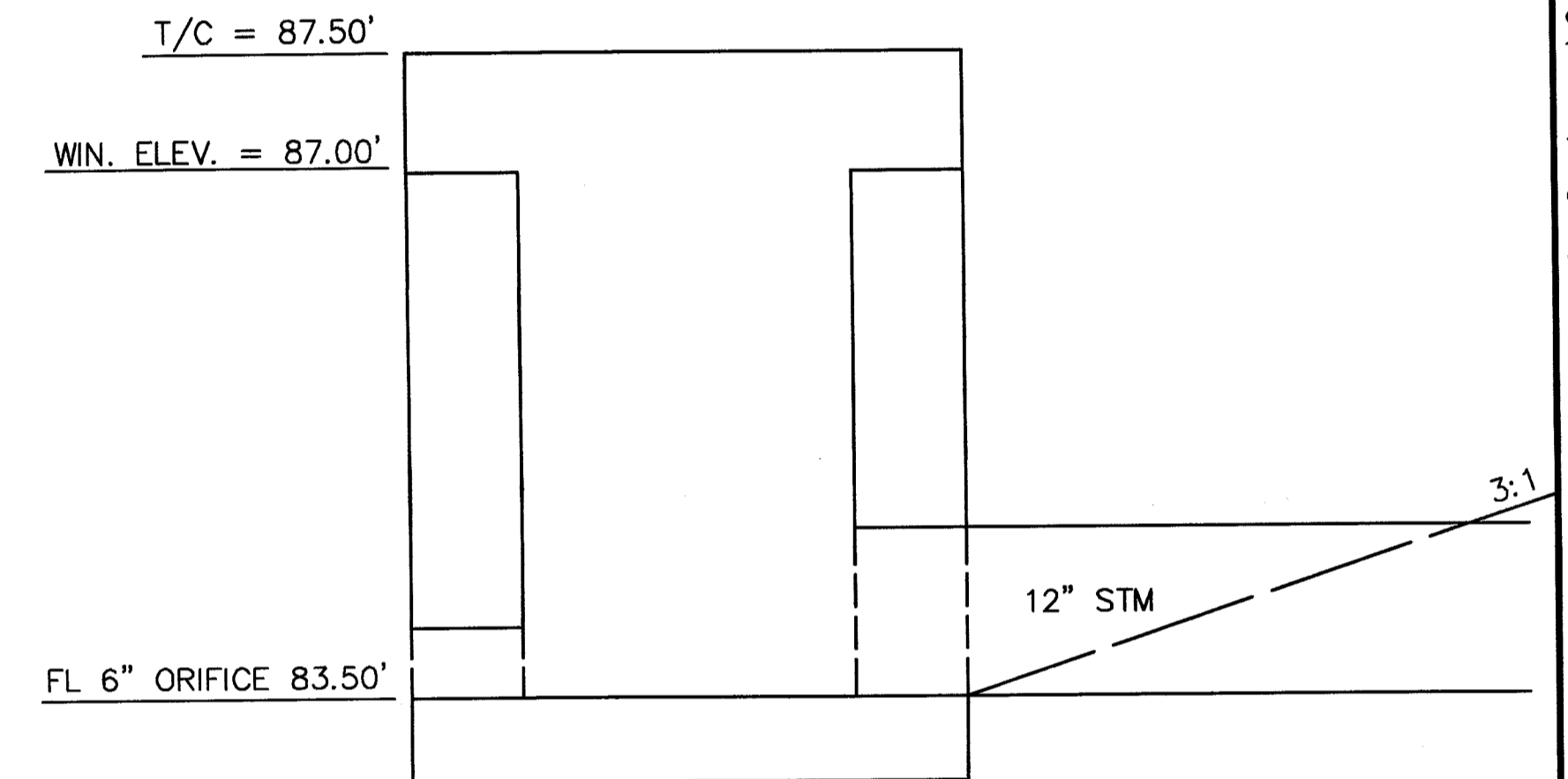
**CONNECTION DETAIL**



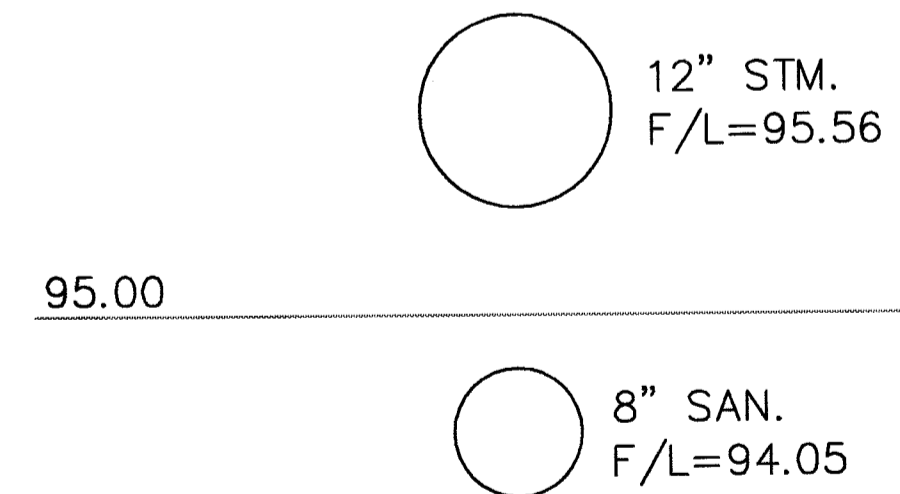
**SECTION A-A**



**HW-D HEADWALL DETAIL**  
(PER LINDSAY CONCRETE DWG. NO. LCCB0002)



**OUTLET STRUCTURE**  
ODOT 2-2A



**UTILITY CROSSING**

UTILITY NOTES:

- EXISTING UTILITIES TO REMAIN, WHICH ARE CRUSHED OR DAMAGED DURING CONSTRUCTION, SHALL BE REPLACED AT CONTRACTOR'S EXPENSE.
- ROOF DRAINS, FOUNDATION DRAINS AND OTHER CLEAN WATER CONNECTIONS TO THE SANITARY SEWER ARE PROHIBITED.
- ANY UTILITIES FOUND DURING EXCAVATION, NOT SHOWN ON PLAN, SHALL BE BROUGHT TO THE IMMEDIATE ATTENTION OF THE ARCHITECT AND/OR ENGINEER.
- EACH SUBCONTRACTOR SHALL OBTAIN HIS OWN PERMITS AND CONTACT THE UTILITY COMPANY FOR VERIFICATION AND LOCATION OF HOOK-UP PRIOR TO ANY WORK BEING DONE.
- UTILITIES SHOWN WERE TAKEN FROM RECORDS OF RESPECTIVE UTILITY COMPANIES AND FROM A TOPOGRAPHIC SURVEY AND DO NOT NECESSARILY REPRESENT ALL UNDERGROUND OR OVERHEAD UTILITIES ADJACENT TO OR UPON THE PREMISES SHOWN ON THE PLAN. CALL OUPS PRIOR TO EXCAVATION.
- COORDINATE UTILITY CONNECTIONS AT THE BUILDING WITH THE MECHANICAL DRAWINGS.
- THE PLUMBING CONTRACTOR SHALL BE RESPONSIBLE FOR PROVIDING ADEQUATE SLOPE OF BUILDING SEWERS TOWARDS THE LATERAL SEWER IN STRICT ACCORDANCE WITH THE GOVERNING AUTHORITIES PRIOR TO STARTING CONSTRUCTION.
- ALL STORM SEWER SHALL CONFORM TO ODOT ITEM 707.33 OR EQUAL MATERIAL APPROVED BY THE CITY.
- SANITARY LATERAL SHALL BE A MINIMUM 6" DIAMETER OF PVC PIPE, ASTM D3034, SDR35, WITH RUBBER GASKET JOINTS OR APPROVED EQUAL. LATERAL SHALL BE CONSTRUCTED WITH A MINIMUM OR 1% SLOPE, AND HAVE A MINIMUM OF 3 FOOT COVER.
- WATER SERVICE LATERAL SHALL BE DUCTILE IRON OF THE SIZE SHOWN ON THE MECHANICAL DRAWINGS AND SHALL HAVE BETWEEN 4 AND 5 FOOT OF COVER. ALL BACKFLOW PREVENTION DEVICES SHALL BE APPROVED BY CONSUMERS OF OHIO WATER COMPANY.
- CITY OF MASSILLON STREET OPENINGS PERMIT WILL BE REQUIRED FOR INSTALLATION OF STORM & SANITARY LATERALS IN GAIL AVE.. CONTRACTOR TO CONTACT MASSILLON ENGINEERING DEPARTMENT FOR PERMIT AND INSPECTION REQUIREMENTS.
- A SANITARY PERMIT WILL BE REQUIRED. CONTRACTOR TO CONTACT MASSILLON ENGINEERING DEPARTMENT FOR PERMIT AND INSPECTION REQUIREMENTS.
- A DRIVEWAY PERMIT WILL BE REQUIRED. CONTRACTOR TO CONTACT MASSILLON ENGINEERING DEPARTMENT FOR PERMIT AND INSPECTION REQUIREMENTS.
- CONTRACTOR TO BE LICENSED IN THE CITY OF MASSILLON FOR ALL WORK WITHIN THE RIGHT OF WAY.
- CONTRACTOR TO COORDINATE ANY UNDERGROUND ELECTRIC WITH OHIO EDISON, UNDERGROUND TELEPHONE WITH AMERITECH AND UNDERGROUND CABLE SERVICE WITH MASSILLON CABLE TV.

REVISIONS

NO.	DATE	BY	DESCRIPTION
1	12/4/02	AGW	DETAILS

Site Development Group  
4150 Belden Village, Suite 104  
Canton, Ohio 44705  
Contact: Dennis Fulk  
330-491-9000 Ext. 223  
Fax: 491-9000



MASSILLON, OHIO  
AMHERST RIDGE  
OUT LOT 941, AND LOT NUMBER 15510

DETAILS

DESIGN	DRAFT	CHECK
EMS	AGW	DDF

JOB NO.: 02-394

DATE: NOVEMBER 2002

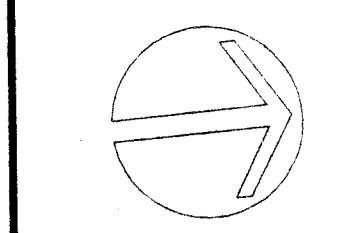
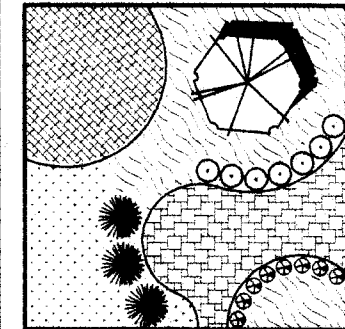
SCALE:

HORIZONTAL: SEE DETAILS

VERTICAL: 1" = 1'

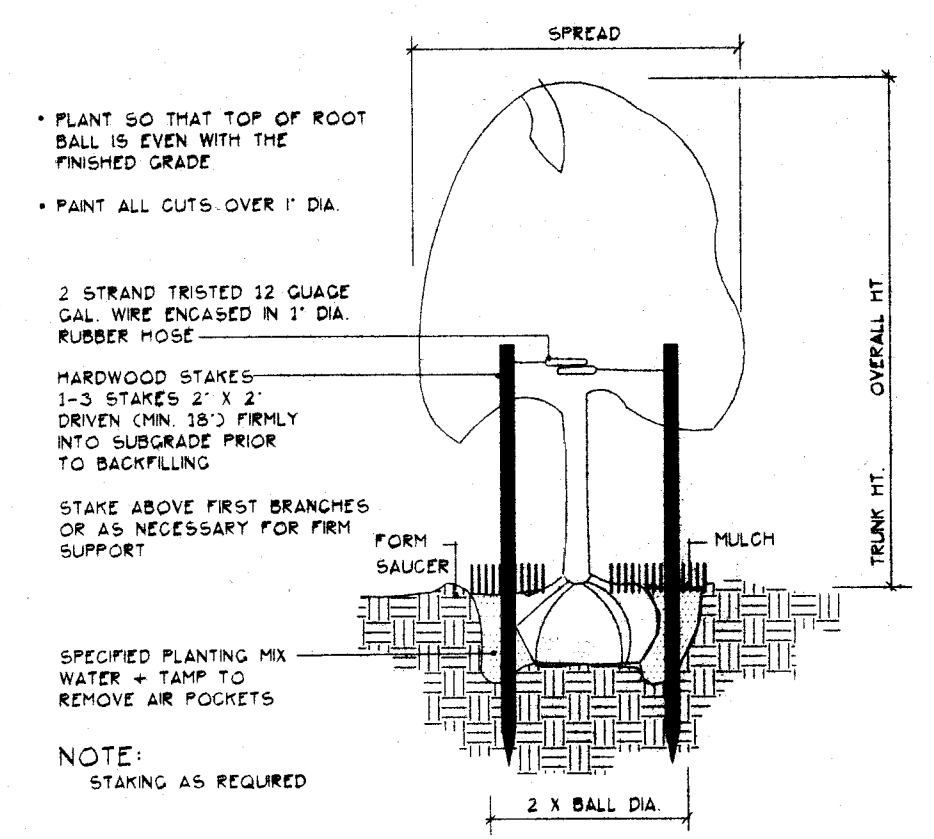
PRINT DATE:

SHEET NO.: 3/3

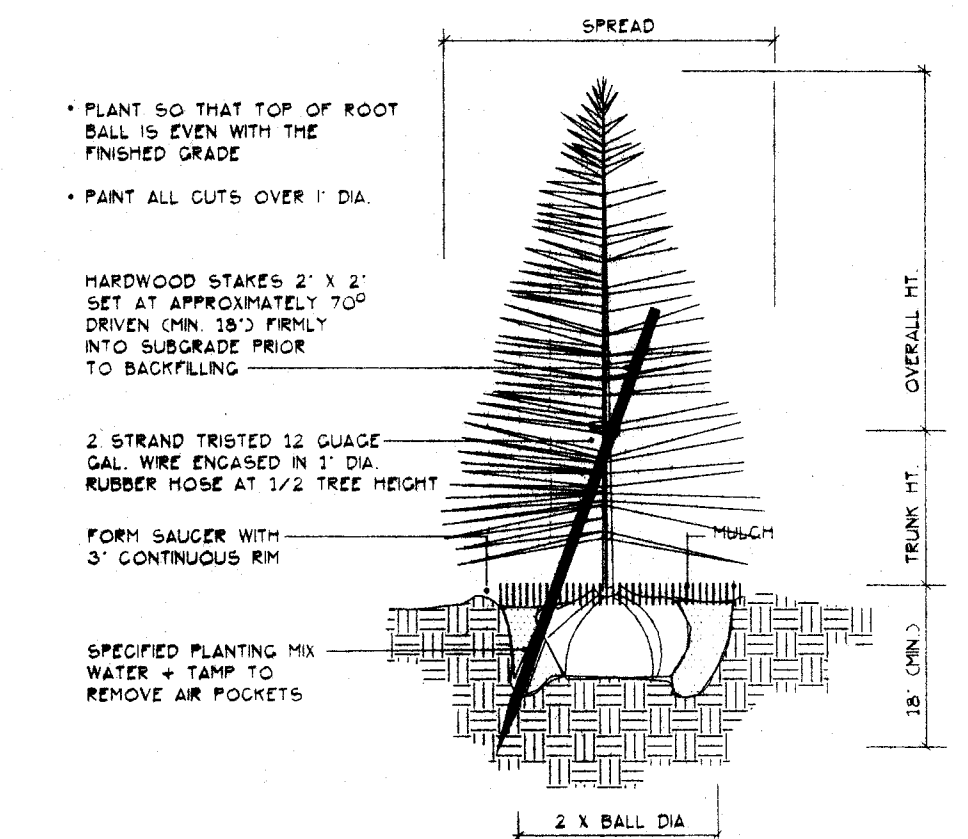


Greg Byrer, Reg. Landscape Architect—OH #930  
 7600 Kingston St. NW, Massillon, OH 44868  
 Tel./Fax: (330) 832-7069 email: meridiangroup@aol.com

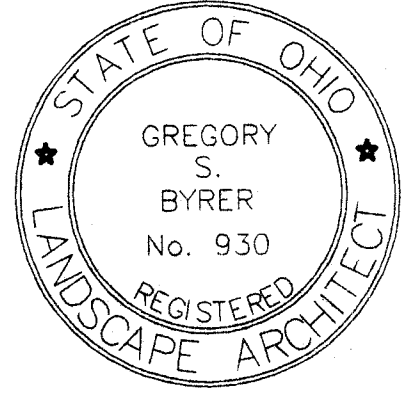
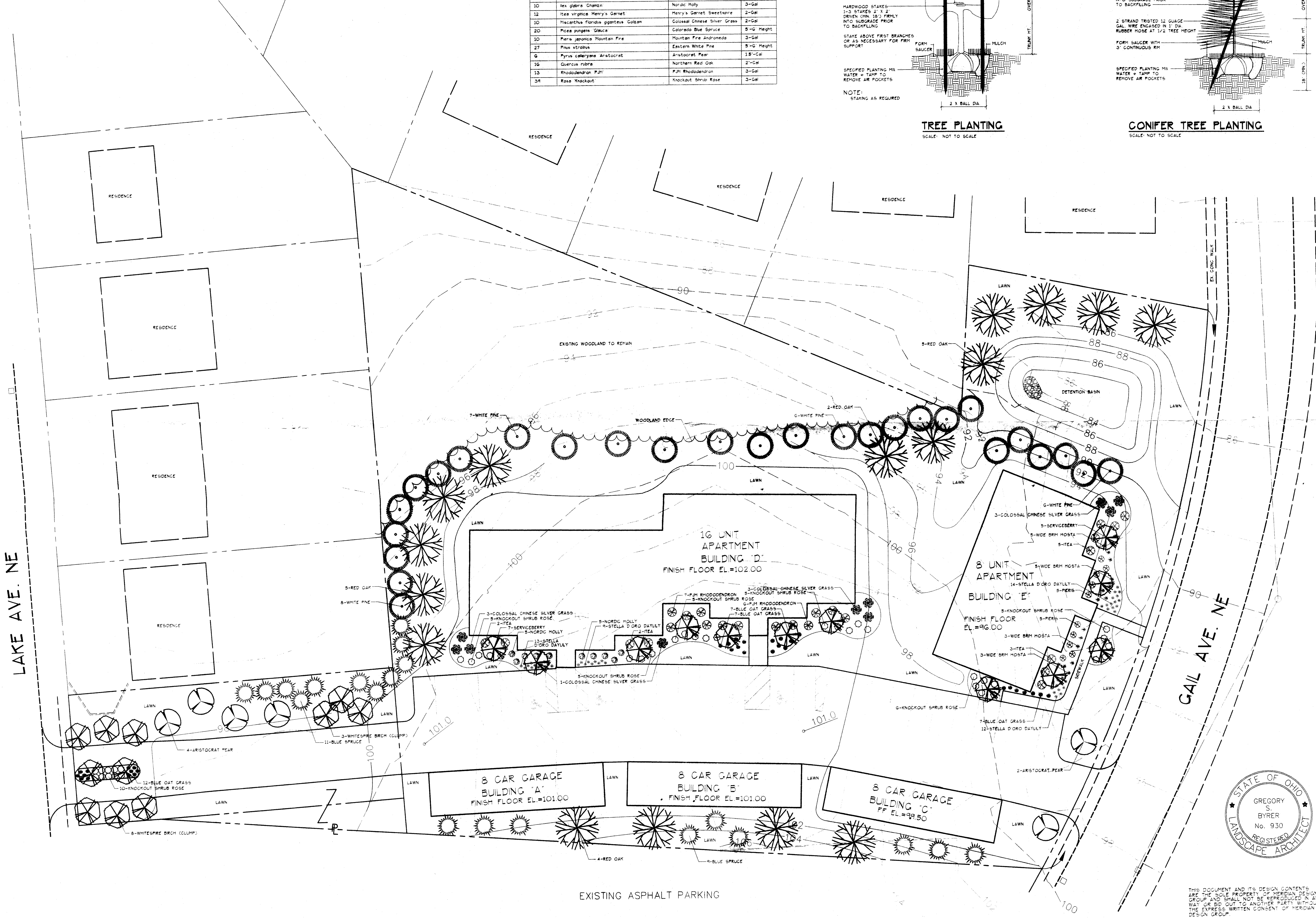
Quantity	Scientific Name	Common Name	Size
12	Anelocher canadensis	Shadow Serviceberry	5'-6" Height
11	Betula platyphylla japonica	Whitespire Birch (Clump)	7'-8" Height
33	Melicotrichon sempervirens	Blue Oat Grass	2'-Gal
48	Hemerocallis 'Stella d'Oro'	Stella d'Oro Daylily	1'-Gal
16	Hosta x Wide Brm	Wide Brm Hosta	1'-Gal
10	Ilex glabra Chamin	Noradic Holly	3'-Gal
12	Ilex virginica Henry's Garnet	Henry's Garnet Sweetpire	2'-Gal
10	Macarthus floridus gigantea	Colossal Chinese Silver Grass	2'-Gal
20	Picea pungens Glauca	Colorado Blue Spruce	5'-6" Height
10	Pinus japonica Mountain Fir	Mountain Fir Andromeda	3'-Gal
27	Pinus strobus	Eastern White Pine	5'-6" Height
6	Pyrus calleryana Anatacrot	Anatacrot Pear	15'-Gal
16	Quercus rubra	Northern Red Oak	2'-Gal
13	Rhododendron 'PJM'	PJM Rhododendron	3'-Gal
34	Rosa Knockout	Knockout Shrub Rose	3'-Gal



**TREE PLANTING**  
 SCALE: NOT TO SCALE



**CONIFER TREE PLANTING**  
 SCALE: NOT TO SCALE



THIS DOCUMENT AND ITS DESIGN CONTENTS ARE THE SOLE PROPERTY OF MERIDIAN DESIGN GROUP AND SHALL NOT BE REPRODUCED IN ANY WAY OR BID OUT TO ANOTHER PARTY WITHOUT THE EXPRESS WRITTEN CONSENT OF MERIDIAN DESIGN GROUP.

EXISTING ASPHALT PARKING