

LEGEND

- R/W- RIGHT-OF-WAY
- W- WATER LINE
- S- SANITARY SEWER LINE
- ST- STORM SEWER LINE
- G- GAS LINE
- UE- UNDERGROUND ELECTRIC
- OE- OVERHEAD ELECTRIC
- UT- UNDERGROUND TELEPHONE
- OT- OVERHEAD TELEPHONE
- OE&T- OVERHEAD ELEC. & TELE.
- X-X- FENCE
- GAS LINE MARKER
- WATER LINE MARKER
- POWER POLE
- GENERAL POLE
- LIGHT POLE
- ANCHOR
- SIGN
- CATCH BASIN (C.B.)
- MAN HOLE (AS LABELED)
- TRAFFIC CONTROL BOX
- FIRE HYDRANT
- VALVE
- EOP
- EDGE OF PAVEMENT
- SPOT ELEV. TOP & BOTTOM OF CURB
- SPOT ELEV. EDGE OF PAVEMENT
- (RCE) ROCK CONSTRUCTION ENTRANCE
- (IP) INLET PROTECTION
- (SF) SILT FENCE
- FM FORCE MAIN
- NTS NOT TO SCALE
- SLCPP SMOOTH LINED CORRUGATED PLASTIC PIPE

TREE LEGEND

- O OAK
- E ELM
- C CHERRY
- M MAPLE
- T TREE
- AP APPLE
- W WILLOW

UTILITY NOTES

- EXISTING UTILITIES TO REMAIN, WHICH ARE CRUSHED OR DAMAGED DURING CONSTRUCTION, SHALL BE REPLACED AT CONTRACTOR'S EXPENSE.
- ROOF DRAINS, FOUNDATION DRAINS AND OTHER CLEAN WATER CONNECTIONS TO THE SANITARY SEWER ARE PROHIBITED.
- ANY UTILITIES FOUND DURING EXCAVATION, NOT SHOWN ON PLAN, SHALL BE BROUGHT TO THE IMMEDIATE ATTENTION OF THE ARCHITECT AND/OR ENGINEER.
- EACH SUBCONTRACTOR SHALL OBTAIN HIS OWN PERMITS AND CONTACT THE UTILITY COMPANY FOR VERIFICATION AND LOCATION OF HOOK-UP PRIOR TO ANY WORK BEING DONE.
- UTILITIES SHOWN WERE TAKEN FROM RECORDS OF RESPECTIVE UTILITY COMPANIES AND FROM A TOPOGRAPHIC SURVEY AND DO NOT NECESSARILY REPRESENT ALL UNDERGROUND OR OVERHEAD UTILITIES ADJACENT TO OR UPON THE PREMISES SHOWN ON THE PLAN. CALL OUPS PRIOR TO EXCAVATION.
- COORDINATE UTILITY CONNECTIONS AT THE BUILDING WITH THE MECHANICAL DRAWINGS.
- THE PLUMBING CONTRACTOR SHALL BE RESPONSIBLE FOR PROVIDING ADEQUATE SLOPE OF BUILDING SEWERS TOWARDS THE LATERAL SEWER IN STRICT ACCORDANCE WITH THE GOVERNING AUTHORITIES PRIOR TO STARTING CONSTRUCTION.
- ALL UTILITIES SHALL BE UNDERGROUND.
- ALL STORM SEWER SHALL CONFORM TO ODOT ITEM 707.33 OR EQUAL MATERIAL APPROVED BY THE CITY.
- WATER SERVICE LATERAL SHALL BE TYPE "K" COPPER OF THE SIZE SHOWN ON THE MECHANICAL DRAWINGS AND SHALL HAVE BETWEEN 4 AND 5 FEET OF COVER. ALL BACKFLOW PREVENTION DEVICES SHALL BE APPROVED BY CONSUMERS OF OHIO WATER COMPANY.
- CITY OF MASSILLON STREET OPENING PERMIT WILL BE REQUIRED FOR INSTALLATION OF WATER & SANITARY LATERALS. (SEE DETAIL)
- A SANITARY PERMIT WILL BE REQUIRED. CONTRACTOR TO CONTACT MASSILLON ENGINEERING DEPARTMENT FOR PERMIT AND INSPECTION REQUIREMENTS.
- A DRIVEWAY PERMIT WILL BE REQUIRED. CONTRACTOR TO CONTACT MASSILLON ENGINEERING DEPARTMENT FOR PERMIT AND INSPECTION REQUIREMENTS.
- TRAFFIC SHALL BE MAINTAINED ON 3RD STREET N.W. AT ALL TIMES. TRAFFIC CONTROL SHALL BE MAINTAINED IN ACCORDANCE WITH THE OHIO MANUAL OF UNIFORM TRAFFIC CONTROL DEVICES (OMUTCD).
- CONTRACTOR TO BE LICENSED WITH THE CITY IN ORDER TO WORK WITHIN THE CITY RIGHT-OF-WAY.

NOTE:
CONTRACTOR TO PLACE ROCK CHANNEL PROTECTION TYPE "C" W/FILTER (15L X 5W X 1.5D)

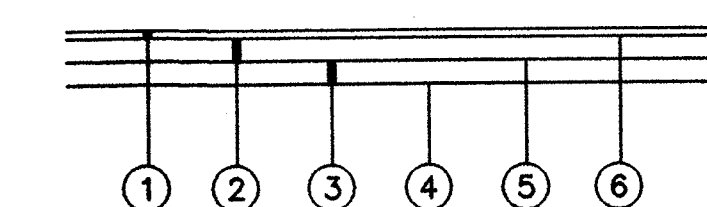
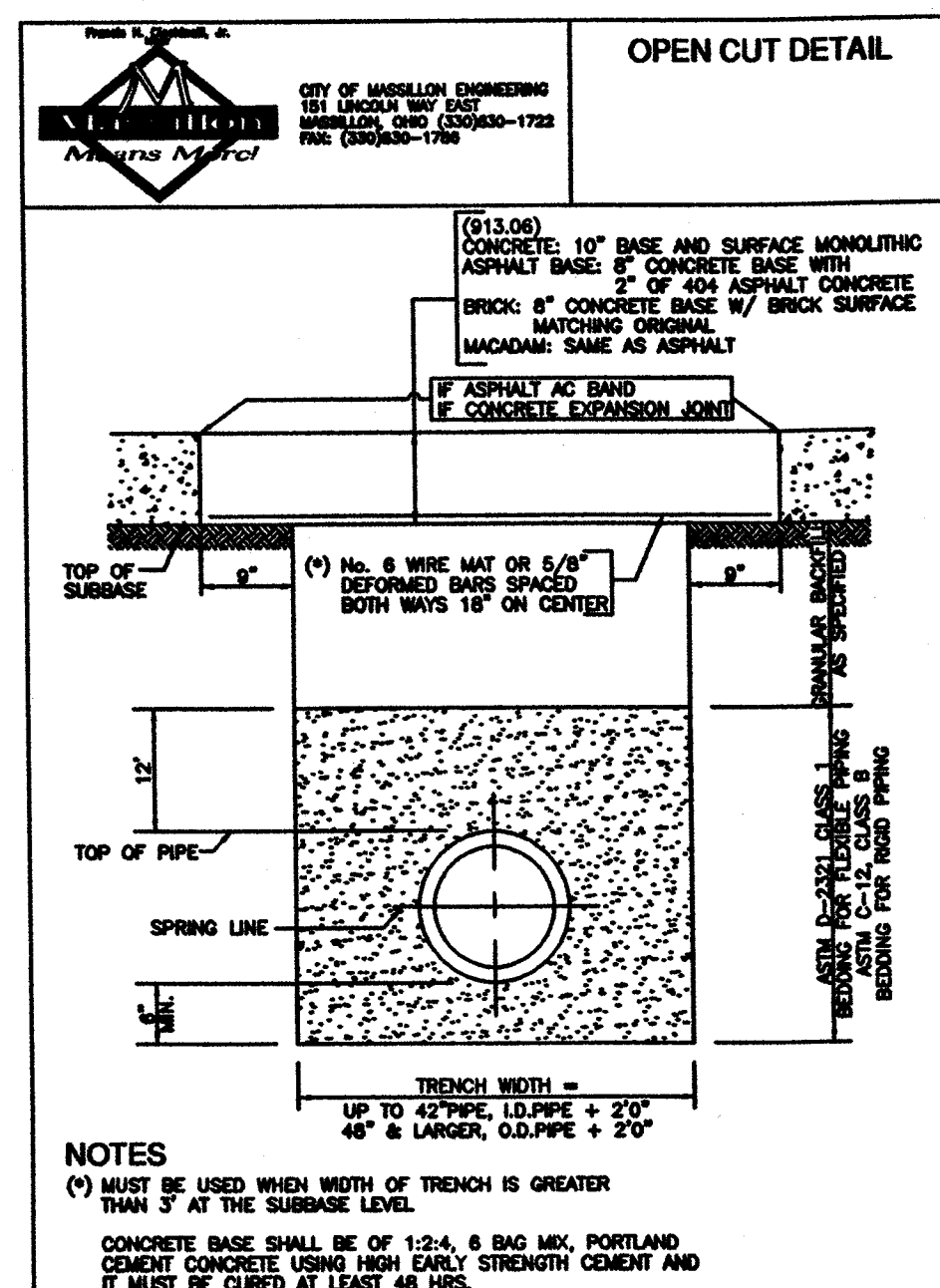
NOTE:
DETENTION FOR THIS SITE IS NOT SHOWN, BUT THE INCREASE IN RUNOFF WILL BE ACCOMMODATED FOR WHEN THE LARGER PARENT TRACT IS DEVELOPED IN THE FUTURE.

EXIST. SAN. M.H.
T/C 100.98
R.N. 95.18
R.W. & S. 94.33
R.N.W. 95.28

DITCH CROSS SECTION A-A

OHIO WATER SERVICE CO.
VOL.277, PG.230

PROPOSED OFFICE BUILDING
F.F. 99.60



- ITEM 404 1" ASPHALT CONCRETE
- ITEM 301 3" BITUMINOUS AGGREGATE BASE
- ITEM 304 6" AGGREGATE BASE (2-3" LIFTS)
- ITEM 203.13 COMPACTED SUBGRADE
- ITEM 408 PRIME COAT TO BE APPLIED AT THE RATE OF 0.4 GAL./SQ. YD.
- ITEM 407 TACK COAT TO BE APPLIED AT THE RATE OF 0.4 GAL./SQ. YD.

ALL ITEMS FROM STATE OF OHIO DEPARTMENT OF TRANSPORTATION, CONSTRUCTION & MATERIAL SPECIFICATIONS, JAN. 1, 1997.

ASPHALT PAVEMENT SECTION DETAIL

NTS

BENCHMARK

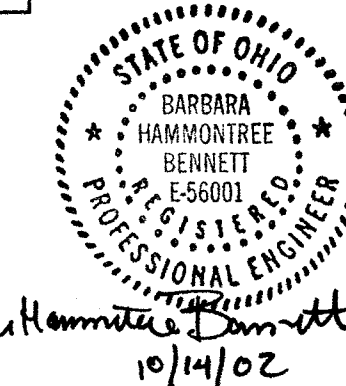
"X" CHISEL IN NORTH FLANGE BOLT OF FIRE HYDRANT, 30' WEST OF 3rd ST. N.W., AND SOUTH EDGE PAVEMENT OF CONSUMER'S DRIVE
ELEVATION = 100.00 (ASSUMED)

NOTE:

CONTRACTOR IS NOT EXEMPT FROM COMPLIANCE WITH STARK COUNTY EROSION/CONTROL SEDIMENT REGULATIONS. CONTRACTOR TO INSTALL AND MAINTAIN EROSION/SEDIMENT CONTROL PRACTICES TO PREVENT SEDIMENT FROM DEPOSITING INTO LOCAL STORM SEWERS, DITCHES OR ONTO ADJACENT PROPERTIES AND STREET RIGHT-OF-WAYS. REFER TO SHEET 3 FOR SILT FENCE, INLET PROTECTION AND SEEDING DETAILS AS NEEDED.

UNDERGROUND UTILITIES
2 WORKING DAYS
BEFORE YOU DIG
CALL TOLL FREE 800-362-2764
OHIO UTILITIES PROTECTION SERVICE
NON-MEMBERS
MUST BE CALLED DIRECTLY

SCALE: 1" = 20'
0 10 20 40



SITE GRADING, UTILITY & SEDIMENT CONTROL PLAN
CORR CHOICE
SITUATED IN THE CITY OF MASSILLON, COUNTY OF STARK,
STATE OF OHIO AND BEING PART OF OUT LOT 382

HAMMON TREE & ASSOCIATES, LTD.
ENGINEERS, PLANNERS, SURVEYORS
CANTON PITTSBURGH AKRON
5033 STONEHAM ROAD, NORTH CANTON, OHIO 44720
PHONE CANTON (330) 669-8817 AKRON (330) 633-7274
TOLL FREE: 1-800-362-2764 FAX: (330) 669-0149
www.hammontree-engineers.com

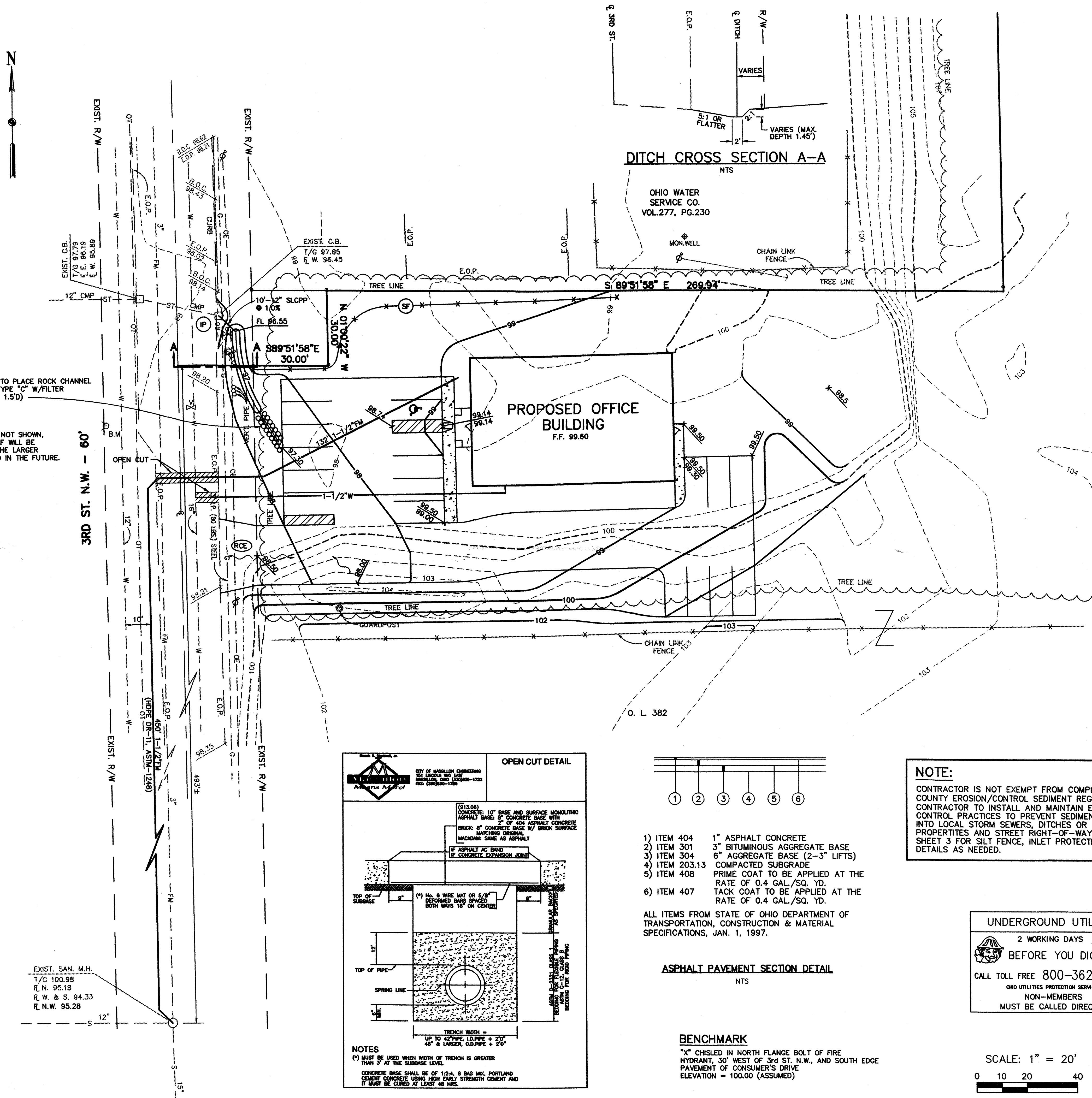
— R/W	RIGHT-OF-WAY
— W	WATER LINE
— S	SANITARY SEWER LINE
— ST	STORM SEWER LINE
— G	GAS LINE
— UE	UNDERGROUND ELECTRIC
— OE	OVERHEAD ELECTRIC
— UT	UNDERGROUND TELEPHONE
— OT	OVERHEAD TELEPHONE
— OE&T	OVERHEAD ELEC. & TELE.
— X — X	FENCE
⊙	GAS LINE MARKER
⊗	WATER LINE MARKER
⊕	POWER POLE
⊖	GENERAL POLE
⊙	LIGHT POLE
⌋	ANCHOR
—	SIGN
□	CATCH BASIN (C.B.)
⊠	MAN HOLE (AS LABELED)
⊠	TRAFFIC CONTROL BOX
⊕	FIRE HYDRANT
⊕	VALVE
EOP	EDGE OF PAVEMENT
$\frac{TOP}{BOTT}$	SPOT ELEV. TOP & BOTTOM OF CURB
$\frac{EOP}{EOP}$	SPOT ELEV. EDGE OF PAVEMENT
(RCE)	ROCK CONSTRUCTION ENTRANCE
(IP)	INLET PROTECTION
(SF)	SILT FENCE
FM	FORCE MAIN
NTS	NOT TO SCALE
SLCPP	SMOOTH LINED CORRUGATED PLASTIC PIPE

O	OAK
E	ELM
C	CHERRY
M	MAPLE
T	TREE
AP	APPLE
W	WILLOW

1. EXISTING UTILITIES TO REMAIN, WHICH ARE CRUSHED OR DAMAGED DURING CONSTRUCTION, SHALL BE REPLACED AT CONTRACTOR'S EXPENSE.
2. ROOF DRAINS, FOUNDATION DRAINS AND OTHER CLEAN WATER CONNECTIONS TO THE SANITARY SEWER ARE PROHIBITED.
3. ANY UTILITIES FOUND DURING EXCAVATION, NOT SHOWN ON PLAN, SHALL BE BROUGHT TO THE IMMEDIATE ATTENTION OF THE ARCHITECT AND/OR ENGINEER.
4. EACH SUBCONTRACTOR SHALL OBTAIN HIS OWN PERMITS AND CONTACT THE UTILITY COMPANY FOR VERIFICATION AND LOCATION OF HOOK-UP PRIOR TO ANY WORK BEING DONE.
5. UTILITIES SHOWN WERE TAKEN FROM RECORDS OF RESPECTIVE UTILITY COMPANIES AND FROM A TOPOGRAPHIC SURVEY AND DO NOT NECESSARILY REPRESENT ALL UNDERGROUND OR OVERHEAD UTILITIES ADJACENT TO OR UPON THE PREMISES SHOWN ON THE PLAN. CALL OUPS PRIOR TO EXCAVATION.
6. COORDINATE UTILITY CONNECTIONS AT THE BUILDING WITH THE MECHANICAL DRAWINGS.
7. THE PLUMBING CONTRACTOR SHALL BE RESPONSIBLE FOR PROVIDING ADEQUATE SLOPE OF BUILDING SEWERS TOWARDS THE LATERAL SEWER IN STRICT ACCORDANCE WITH THE GOVERNING AUTHORITIES PRIOR TO STARTING CONSTRUCTION.
8. ALL UTILITIES SHALL BE UNDERGROUND.
9. ALL STORM SEWER SHALL CONFORM TO ODOT ITEM 707.33 OR EQUAL MATERIAL APPROVED BY THE CITY.
10. WATER SERVICE LATERAL SHALL BE TYPE "K" COPPER OF THE SIZE SHOWN ON THE MECHANICAL DRAWINGS AND SHALL HAVE BETWEEN 4 AND 5 FOOT OF COVER. ALL BACKFLOW PREVENTION DEVICES SHALL BE APPROVED BY CONSUMERS OF OHIO WATER COMPANY.
11. CITY OF MASSILLON STREET OPENING PERMIT WILL BE REQUIRED FOR INSTALLATION OF WATER & SANITARY LATERALS. (SEE DETAIL)
12. A SANITARY PERMIT WILL BE REQUIRED. CONTRACTOR TO CONTACT MASSILLON ENGINEERING DEPARTMENT FOR PERMIT AND INSPECTION REQUIREMENTS.
13. A DRIVEWAY PERMIT WILL BE REQUIRED. CONTRACTOR TO CONTACT MASSILLON ENGINEERING DEPARTMENT FOR PERMIT AND INSPECTION REQUIREMENTS.
14. TRAFFIC SHALL BE MAINTAINED ON 3RD STREET N.W. AT ALL TIMES. TRAFFIC CONTROL SHALL BE MAINTAINED IN ACCORDANCE WITH THE OHIO MANUAL OF UNIFORM TRAFFIC CONTROL DEVICES (OMUTCD).
15. CONTRACTOR TO BE LICENSED WITH THE CITY IN ORDER TO WORK WITHIN THE CITY RIGHT-OF-WAY.

NOTE:
CONTRACTOR TO PLACE ROCK CHANNEL
PROTECTION TYPE "C" W/FILTER
PIPE (15' L X 5' W X 1.5' D)

NOTE:
DETENTION FOR THIS SITE IS NOT SHOWN,
BUT THE INCREASE IN RUNOFF WILL BE
ACCOMMODATED FOR WHEN THE LARGER
PARENT TRACT IS DEVELOPED IN THE FUTURE.



CONTRACTOR IS NOT EXEMPT FROM COMPLIANCE WITH STARK COUNTY EROSION/CONTROL SEDIMENT REGULATIONS.
CONTRACTOR TO INSTALL AND MAINTAIN EROSION/SEDIMENT CONTROL PRACTICES TO PREVENT SEDIMENT FROM DEPOSITING INTO LOCAL STORM SEWERS, DITCHES OR ONTO ADJACENT PROPERTIES AND STREET RIGHT-OF-WAYS. REFER TO SHEET 3 FOR SLOPE FENCE, INLET PROTECTION AND SEEDING DETAILS AS NEEDED.

1) ITEM 404 1" ASPHALT CONCRETE
2) ITEM 301 3" BITUMINOUS AGGREGATE BASE
3) ITEM 304 6" AGGREGATE BASE (2-3" LIFTS)
4) ITEM 203.13 COMPACTED SUBGRADE
5) ITEM 408 PRIME COAT TO BE APPLIED AT THE
RATE OF 0.4 GAL./SQ. YD.
6) ITEM 407 TACK COAT TO BE APPLIED AT THE
RATE OF 0.4 GAL./SQ. YD.

ALL ITEMS FROM STATE OF OHIO DEPARTMENT OF
TRANSPORTATION, CONSTRUCTION & MATERIAL
SPECIFICATIONS, JAN. 1, 1997.

NTS

"X" CHISLED IN NORTH FLANGE BOLT OF FIRE
HYDRANT, 30' WEST OF 3rd ST. N.W., AND SOUTH EDGE
PAVEMENT OF CONSUMER'S DRIVE
ELEVATION = 100.00 (ASSUMED)

2 WORKING DAYS
BEFORE YOU DIG

CALL TOLL FREE 800-362-2764

OHIO UTILITIES PROTECTION SERVICE
NON-MEMBERS
MUST BE CALLED DIRECTLY



Bureau Hammett Barnett
10/14/02

SITE GRADING, UTILITY & SEDIMENT CONTROL PLAN

CORR CHOICE

SITUATED IN THE CITY OF MASSILLON, COUNTY OF STARK,
STATE OF OHIO AND BEING PART OF OUT LOT 382

HAWKINS & ASSOCIATES, LTD.
 ENGINEERS, PLANNERS, SURVEYORS
 CANTON PITTSBURGH AKRON
 5233 STONEHAM ROAD, NORTH CANTON, OHIO 44720
 PHONE: CANTON: (330)/499-8817 AKRON: (330)/633-7274
 1-800-394-8817 FAX: (330)/499-0149
 TOLL FREE: 1-800-394-8817
 www.hammonline-engineers.com

五

 $\frac{2}{3}$