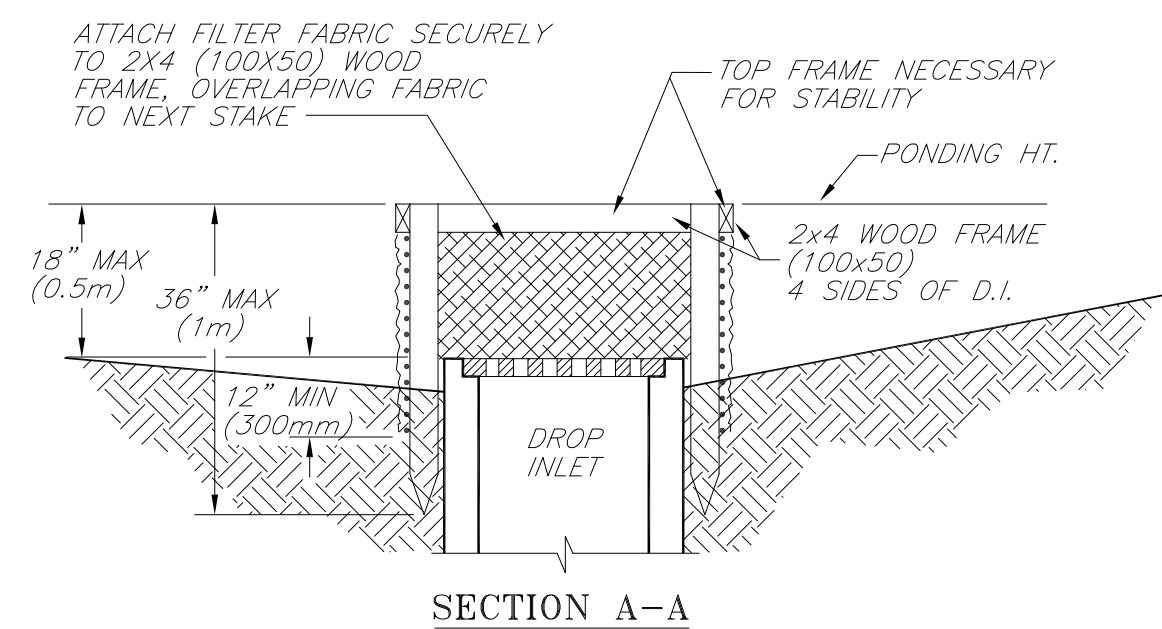


PLAN VIEW



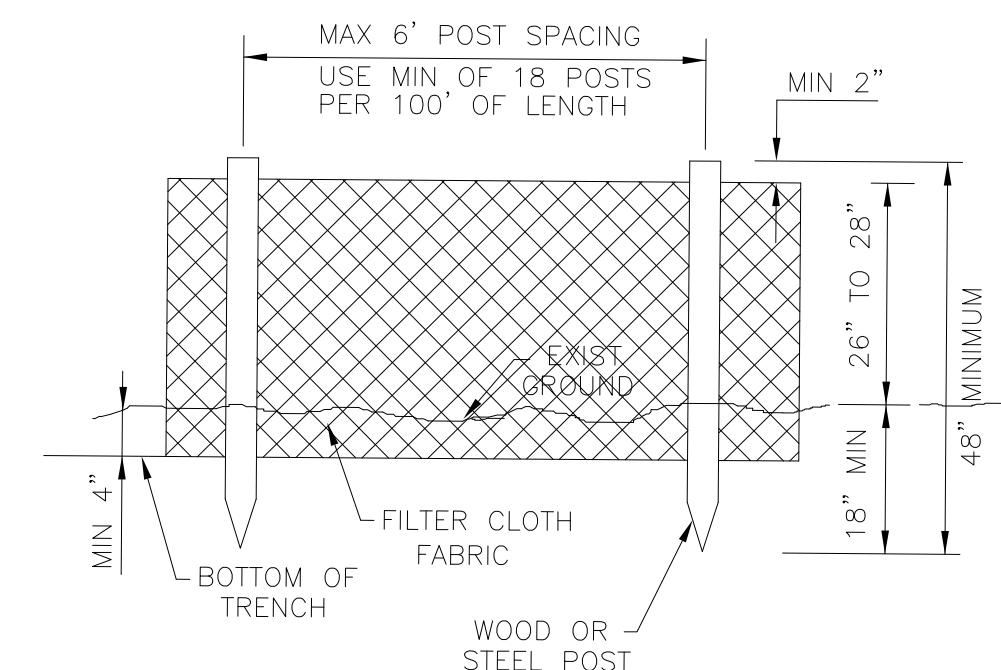
SECTION A-A

- NOTES:
1. DROP INLET SEDIMENT BARRIERS ARE TO BE USED FOR SMALL, NEARLY LEVEL DRAINAGE AREAS. (LESS THAN 5%)
  2. USE 2"x4" (100x50mm) WOOD OR EQUIVALENT METAL STAKES, 3' (1m) MINIMUM LENGTH.
  3. INSTALL 2"x4" (100x50mm) WOOD TOP FRAME TO INSURE STABILITY.
  4. THE TOP OF THE FRAME (PONDING HEIGHT) MUST BE WELL BELOW THE GROUND ELEVATION DOWNSLOPE TO PREVENT RUNOFF FROM BY-PASSING THE INLET. A TEMPORARY DIKE MAY BE NECESSARY ON THE DOWNSLOPE SIDE OF

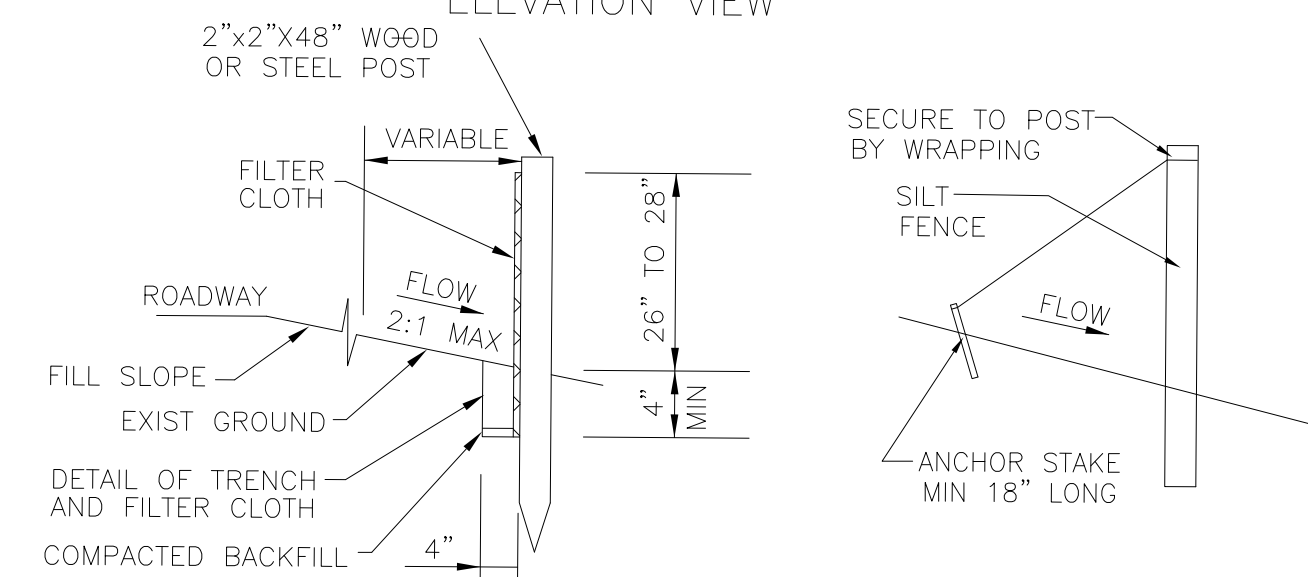
## DROP INLET SEDIMENT BARRIER DETAIL (N.T.S.)

EROSION AND SEDIMENT CONTROL—LAND DISTURBANCE OF AREAS LESS THAN TWO ACRES AND NOT PART OF A LARGER COMMON PLAN OF DEVELOPMENT ARE NOT REQUIRED TO SUBMIT TO THE CITY OF COLUMBUS A FULL SCALE EROSION AND SEDIMENT CONTROL PLAN FOR APPROVAL. HOWEVER, THE PROPOSED LAND DISTURBING ACTIVITIES MUST COMPLY WITH ALL OF THE PROVISIONS OF THE DIVISION OF SEWERAGE AND DRAINAGE EROSION AND SEDIMENT CONTROL REGULATION. ALL LAND DISTURBING ACTIVITIES SHALL BE SUBJECT TO INSPECTION AND SITE INVESTIGATION BY THE CITY OF COLUMBUS TO DETERMINE COMPLIANCE WITH CITY STANDARDS AND REGULATIONS. FAILURE TO COMPLY WITH THESE REGULATIONS MAY SUBJECT THE SITE TO ENFORCEMENT ACTION BY THE CITY. QUESTIONS REGARDING EROSION AND SEDIMENT CONTROL MAY BE REFERRED TO THE STORMWATER MANAGEMENT OFFICE @ 645-6311.

ON-SITE CONTACT: BOB ELLINGER  
PHONE: 645-7378  
FAX: 645-8893



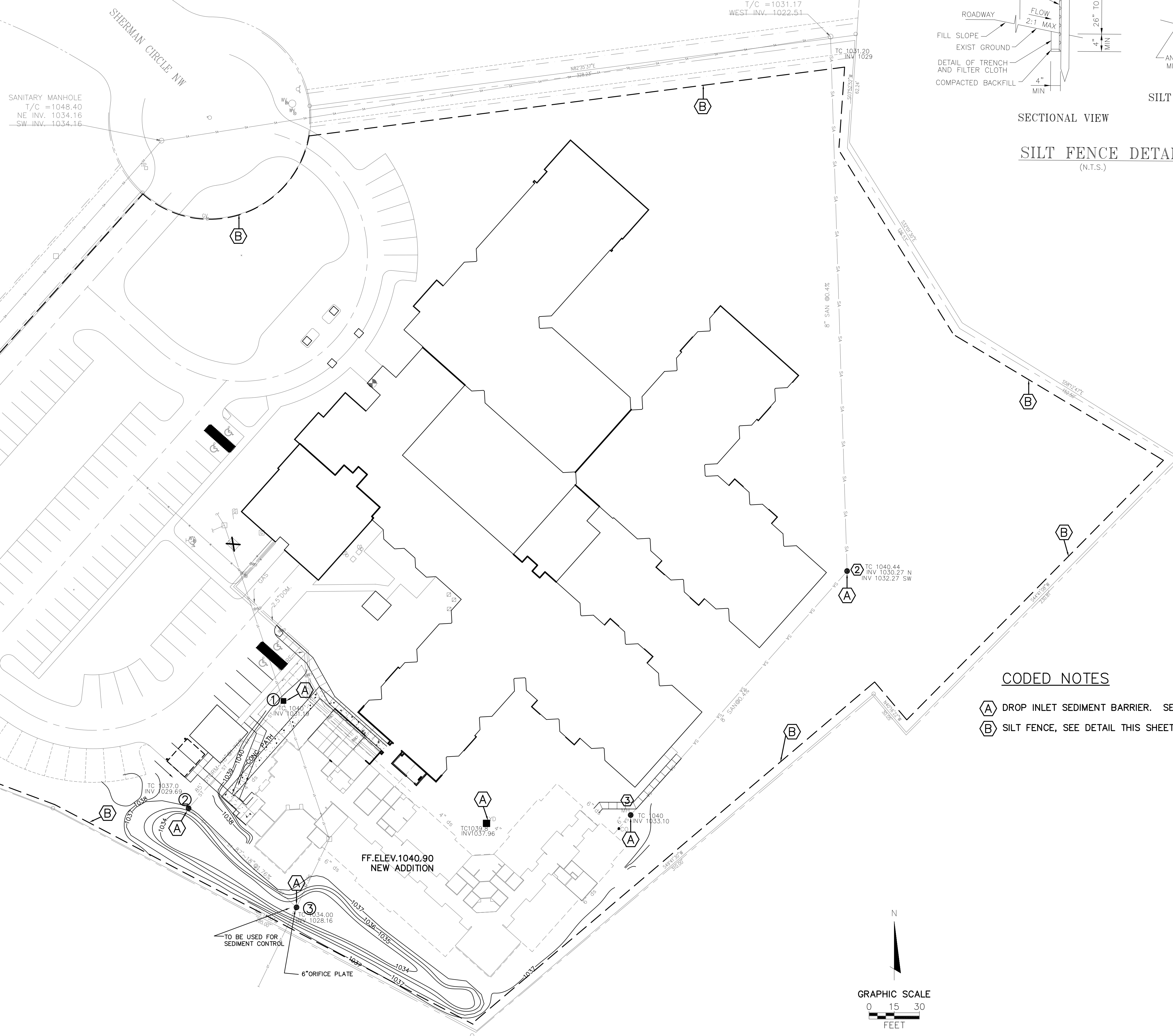
ELEVATION VIEW



SILT FENCE TIEBACK

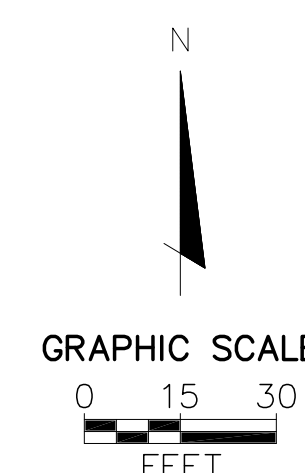
SECTIONAL VIEW

## SILT FENCE DETAIL (N.T.S.)



## CODED NOTES

- (A) DROP INLET SEDIMENT BARRIER. SEE DETAIL THIS SHEET  
(B) SILT FENCE, SEE DETAIL THIS SHEET



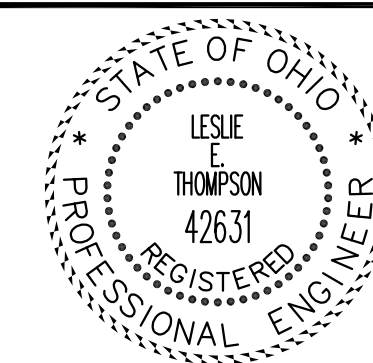
**MADDOX·NBD**  
architecture

4945 BRADENTON AVENUE DUBLIN, OHIO 43017-3576  
614-764-3800 FAX: 614-764-4522  
www.maddoxnbd.com

**LAURELS OF MASSILLON  
LAUREL HEALTH CARE**

8181 WORHTINGTON ROAD, WESTERVILLE, OHIO 43082

## EROSION CONTROL PLAN



PROJECT NO. 2004-68  
ISSUE DATE: 05-06-05  
ISSUED FOR: PERMIT  
SHEET NO. **C701**