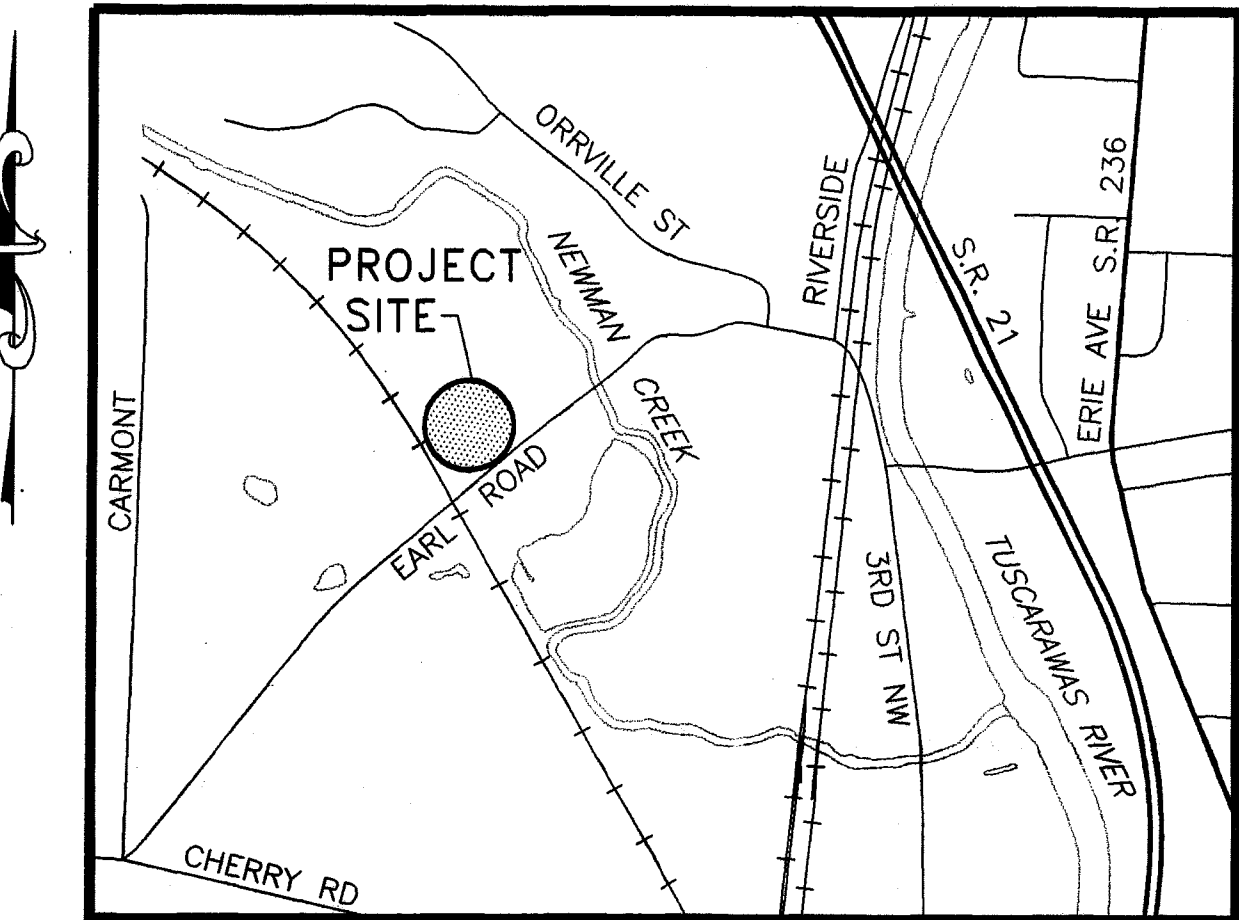


**FULCRUM ENTERPRISES, LLC.**  
**STORAGE BUILDINGS**  
**CITY OF MASSILLON, STARK COUNTY, OHIO**  
**AUGUST 2006**  
**OUTLOT 656**

CITY OFFICIALS

MAYOR  
SAFETY SERVICE DIRECTOR  
CITY ENGINEER  
WASTEWATER TREATMENT DEPARTMENT MANAGER

FRANCIS H. CICCHINELLI, JR.  
MICHAEL J. LOUDIANA  
KEITH DYLEWSKI, P.E.  
JOSEPH R. ULRICH



LOCATION MAP

INDEX OF SHEETS

TITLE SHEET  
SITE PLAN  
GRADING PLAN  
UTILITY PLAN  
DETENTION BASIN PLAN  
STORM WATER PREVENTION POLLUTION PLAN  
NOTES AND DETAILS

1  
2  
3  
4  
5  
6  
7

APPROVED BY THE MASSILLON CITY ENGINEER  
THIS 10th DAY OF OCTOBER, 2006.

KEITH A. DYLEWSKI, P.E.

ONLY APPROVED PLANS SIGNED BY THE CITY  
ENGINEER ARE TO BE USED FOR CONSTRUCTION

SURVEY SERVICES BY:

BUCKEYE SURVEYING SERVICES, INC.  
2223 FULTON DRIVE  
CANTON, OHIO 44708  
(330) 453-8339

PLANS PREPARED BY HETTLER-LARGENT ENGINEERING, LLC  
Michael J. Hettler Jr. 9/25/06  
MICHAEL J. HETTLER JR., P.E.

**H**ettler-Largent  
Engineering LLC  
Civil & Construction Consultants

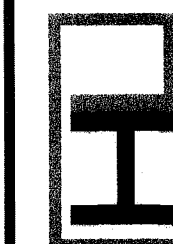
1225 North Main Street • Suite A • North Canton, OH 44720  
PH: 330-966-1776 • www.hettler-largent-eng.com

SEP 25 2006

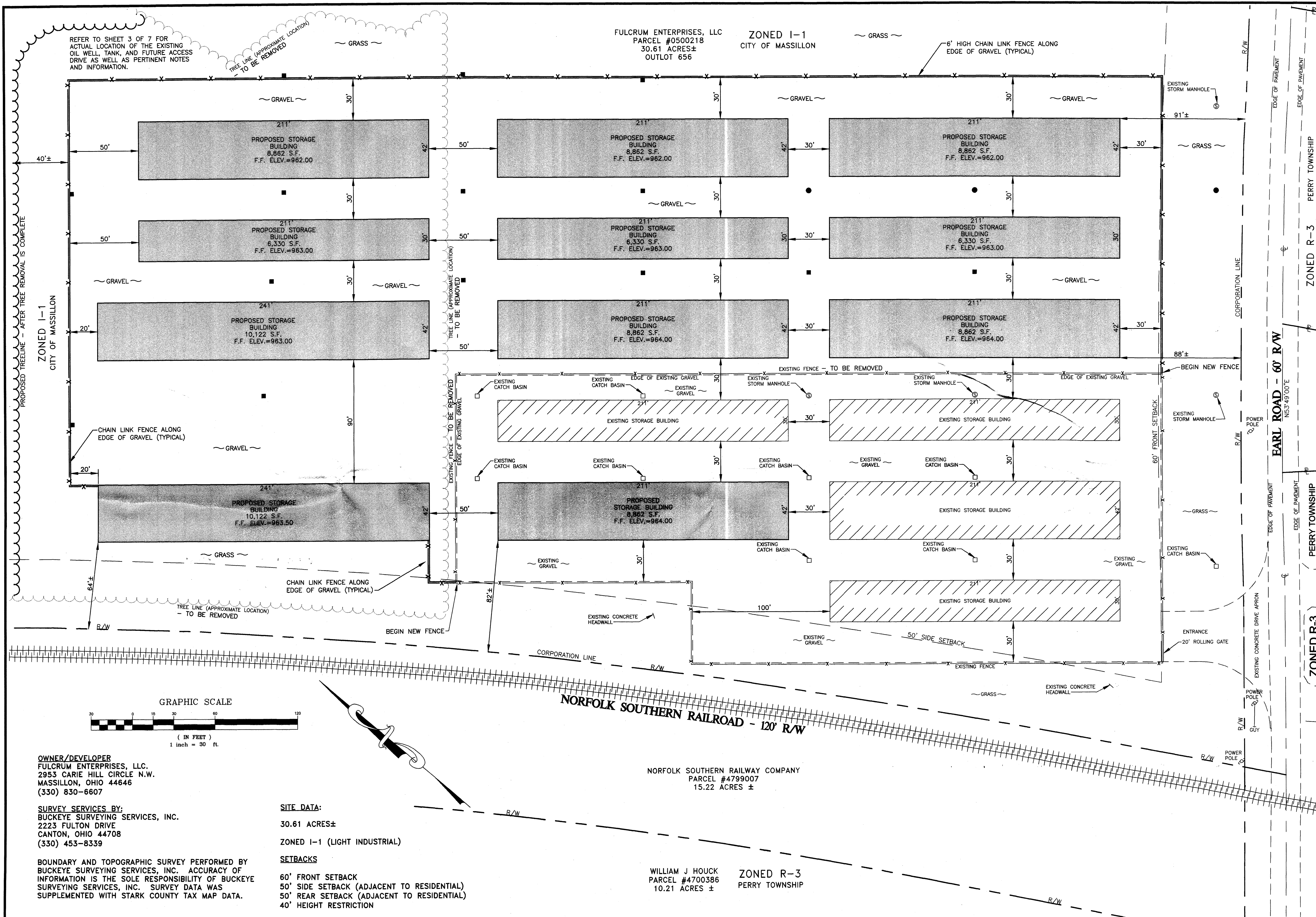
CALL 2 WORKING DAYS  
BEFORE YOU DIG  
1-800-362-2764  
OHIO UTILITIES PROTECTION SERVICE



**Hettler·Largent  
Engineering LLC**  
Civil & Construction Consultants



FULCRUM ENTERPRISES, LLC  
STORAGE BUILDINGS  
CITY OF MASSILLON  
STARK COUNTY, OHIO  
OUTLOT 656

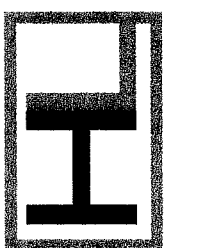




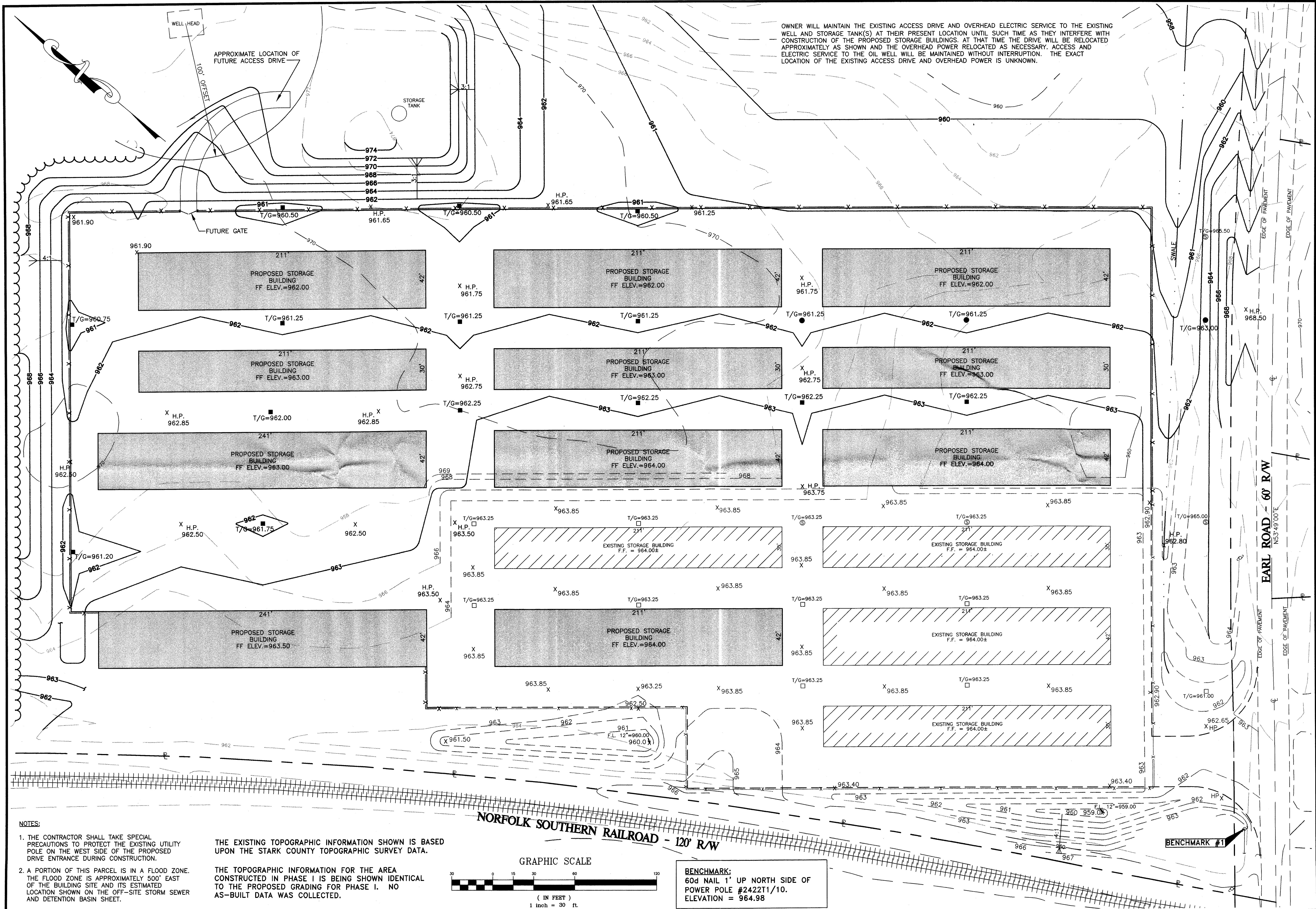
NO.	DATE	DESCRIPTION	BY

GRADING PLAN

**Hettler Largent**  
Engineering LLC  
Civil & Construction Consultants  
1225 North Main Street - Suite A - North Canton, OH 44720  
PH: 330-966-1776-FX: 330-966-7911-hettlereng@hettlereng.com



**FULCRUM ENTERPRISES, LLC**  
STORAGE BUILDINGS  
CITY OF MASSILLON  
STARK COUNTY, OHIO  
OUTLOT 656





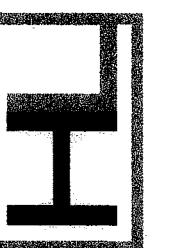




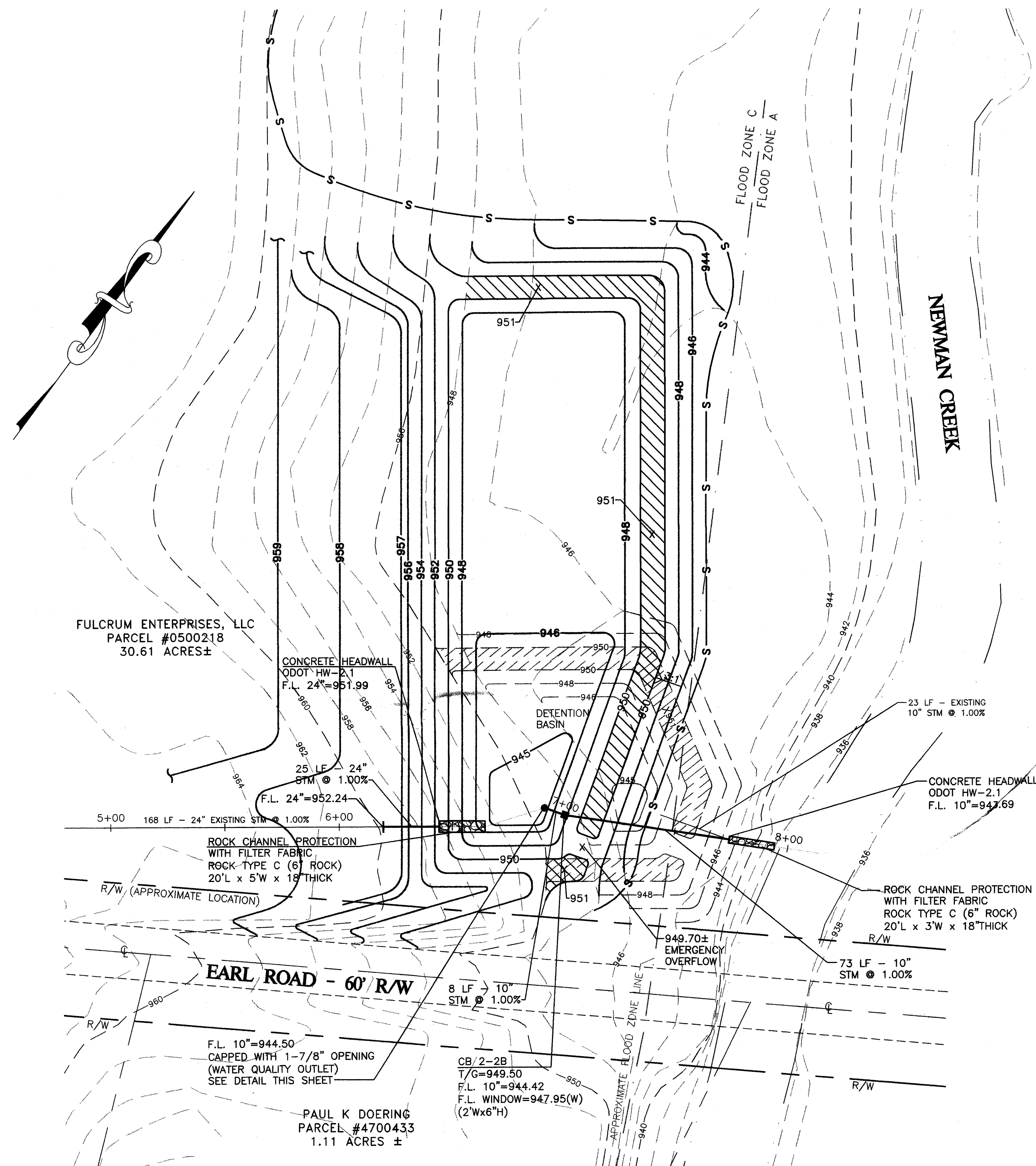
NO	DATE	DESCRIPTION	BY

## DETENTION BASIN PLAN

**Hettler Largent**  
Engineering, LLC  
Civil & Construction Consultants  
1225 North Main Street - Suite A - North Canton, OH 44720  
PH: 330-966-1776-FX: 330-966-7911 - hettlereng@neo.ir.com

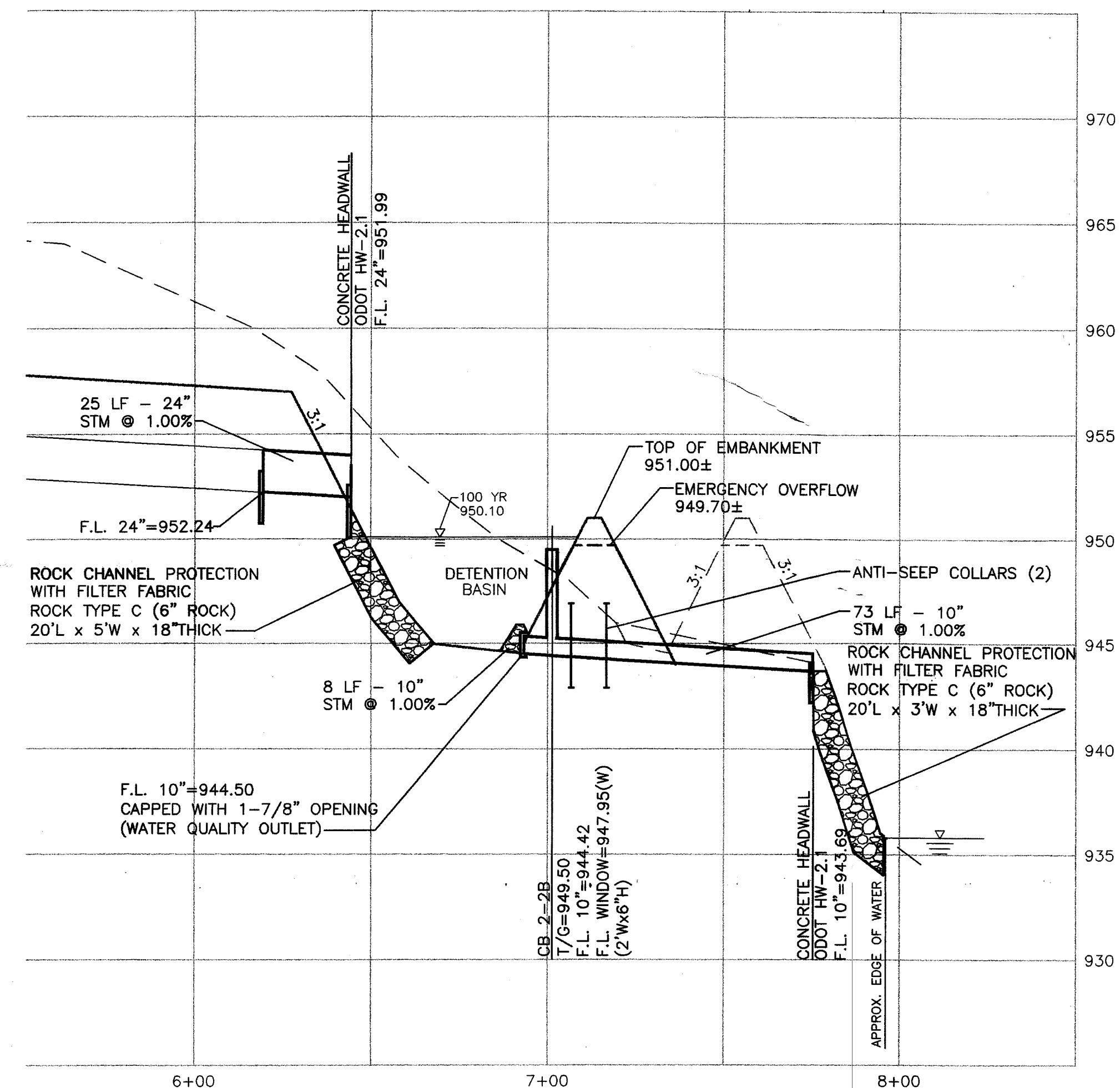
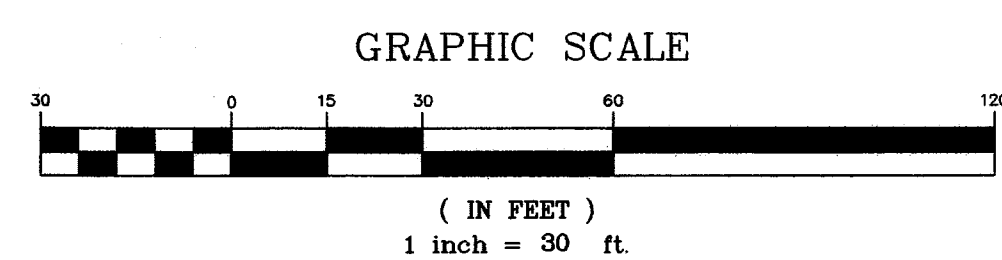


**FULCRUM ENTERPRISES, LLC**  
STORAGE BUILDINGS  
CITY OF MASSILLON  
STARK COUNTY, OHIO  
OUTLOT 656

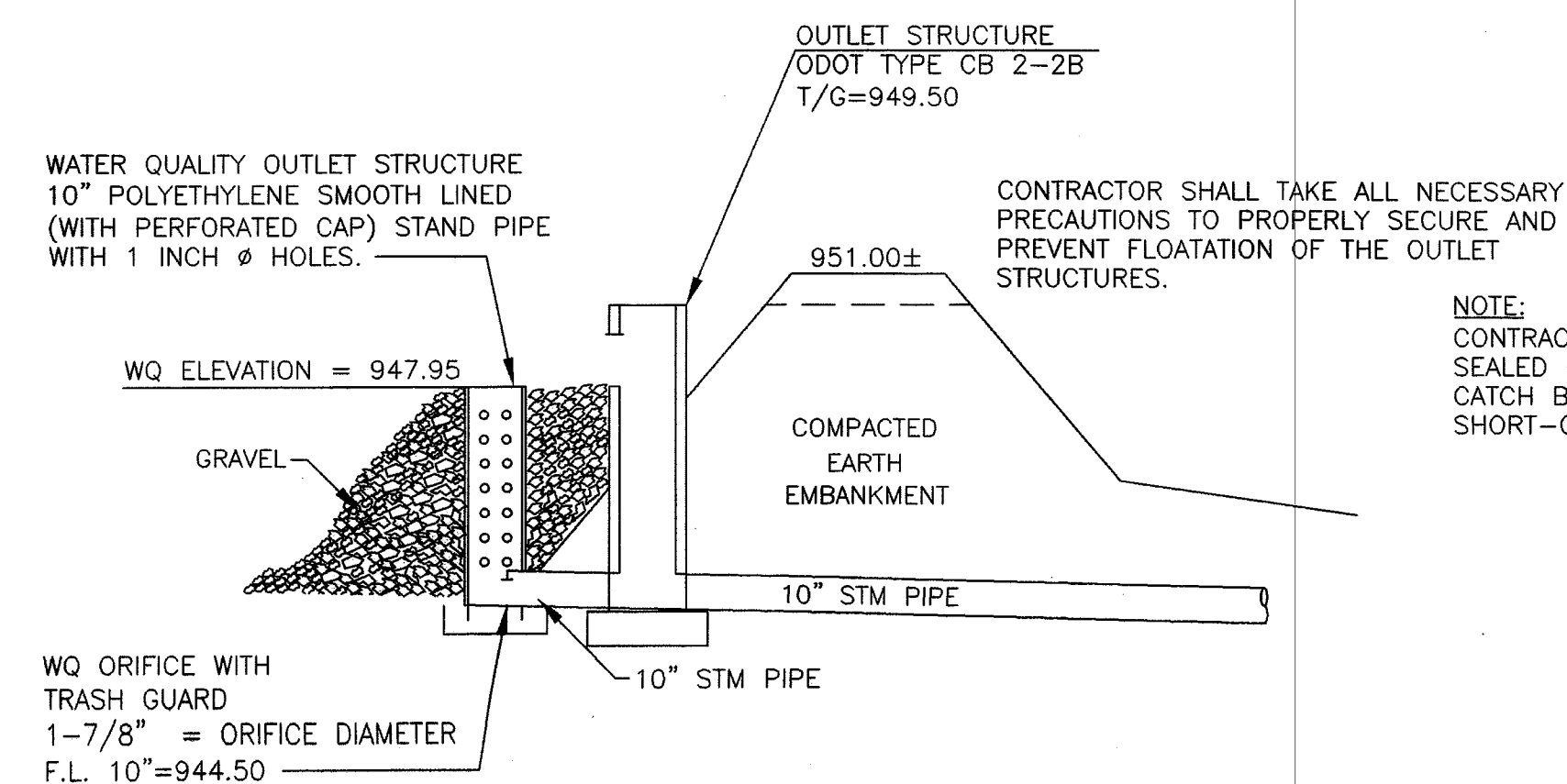


## NOTES:

- THE EXISTING TOPOGRAPHIC DATA SHOWN HEREON WAS TAKEN FROM THE STARK COUNTY TOPOGRAPHIC MAPS.
- THE RIGHT-OF-WAY LINE SHOWN HEREON FOR EARL ROAD WAS TAKEN FROM THE STARK COUNTY TAX MAPS. THE LOCATION OF THE SAID RIGHT-OF-WAY IS APPROXIMATE.



SCALE:  
HORIZ. 1"=30'  
VERT. 1"=5'

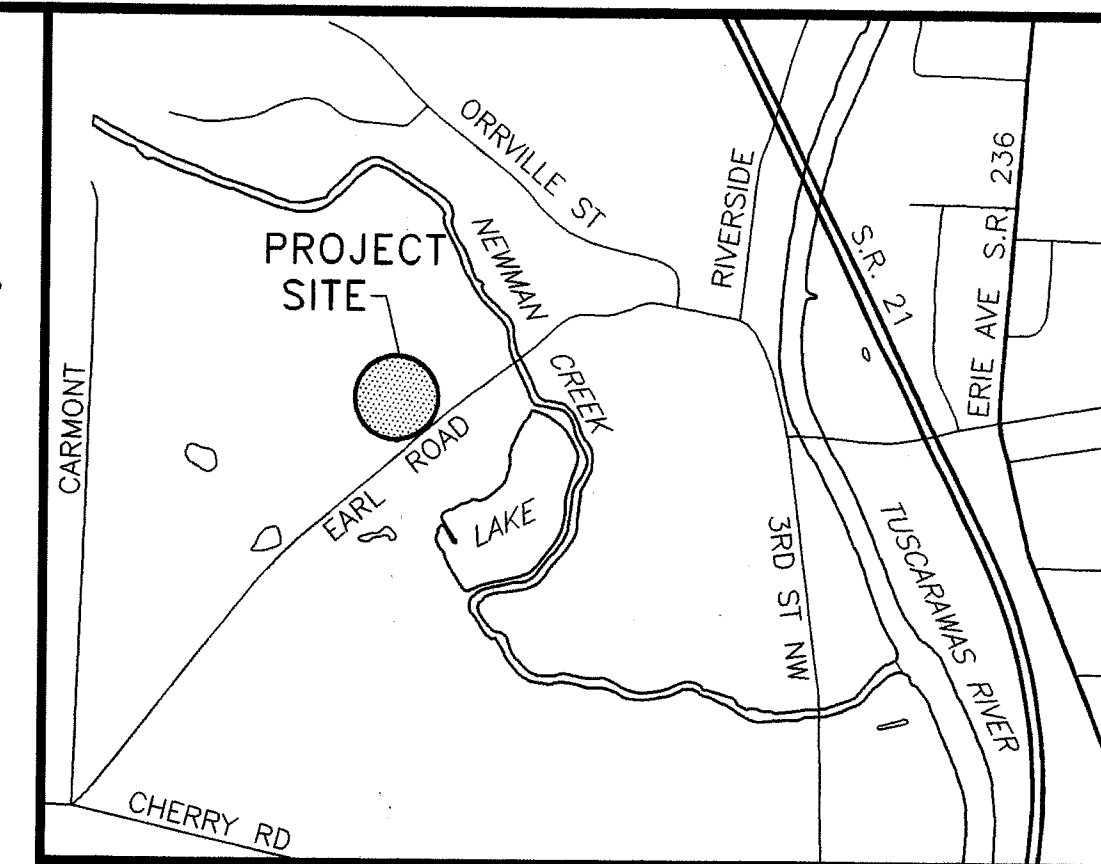
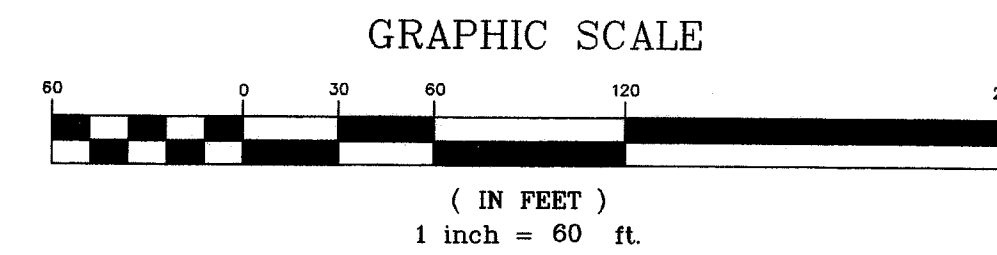
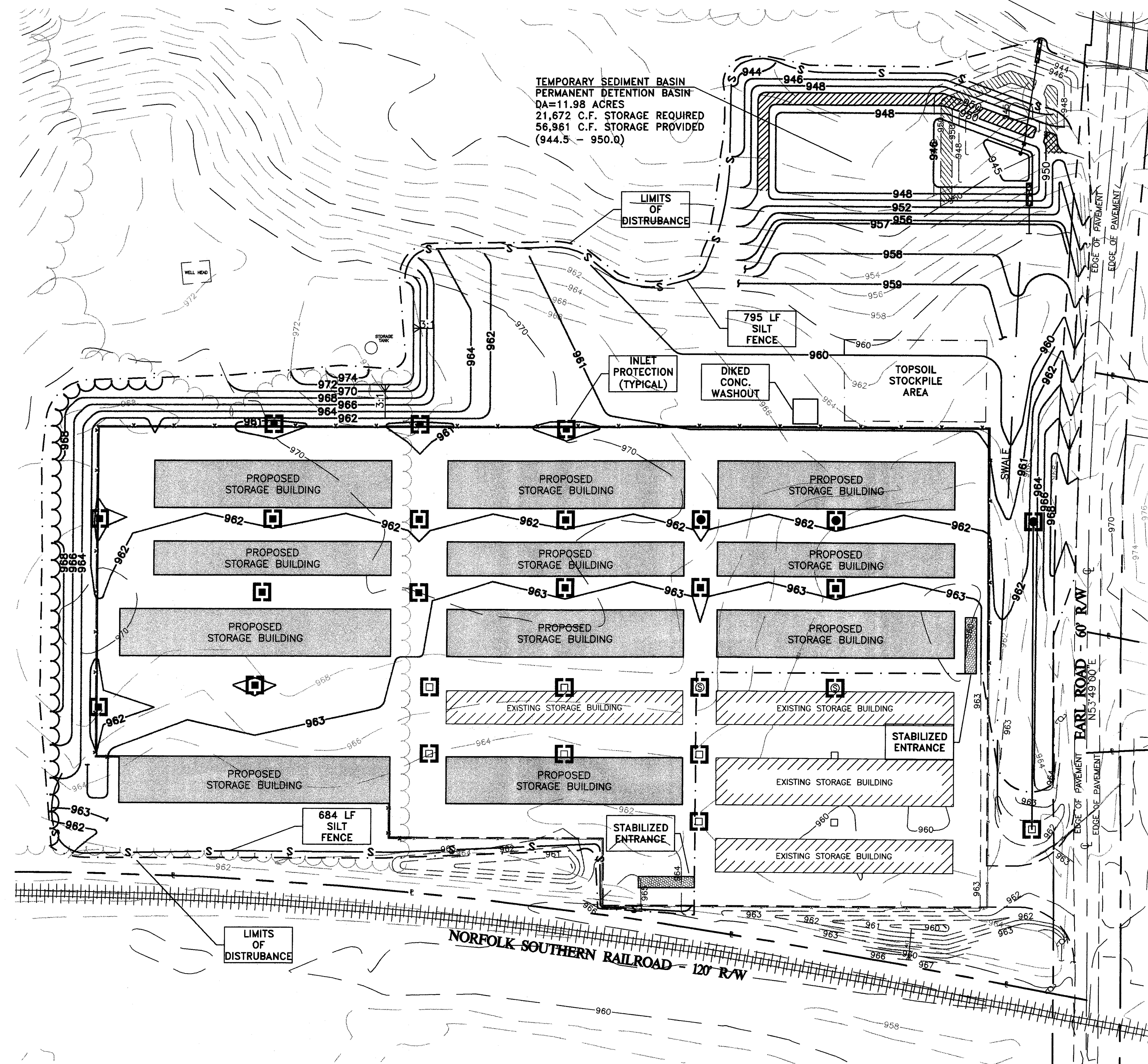


## WATER QUALITY OUTLET STRUCTURES DETAIL

NOT TO SCALE

NOTE:  
CONTRACTOR SHALL ENSURE 10" STORM PIPE IS SEALED INTO BOTH THE WATER QUALITY AND CATCH BASIN STRUCTURES TO PREVENT SHORT-CIRCUITING OF THE WATER QUALITY FLOW.





LOCATION MAP

## GENERAL NOTES:

1. TEMPORARY SOIL STABILIZATION (ODOT ITEM 207) SHALL OCCUR WITHIN SEVEN (7) DAYS AFTER ROUGH GRADING IF A DISTURBED AREA WILL REMAIN IDLE LONGER THAN TWENTY ONE (21) DAYS. PERMANENT SOIL STABILIZATION (ODOT ITEM 659) SHALL BE INSTALLED WITHIN SEVEN (7) DAYS AFTER FINAL GRADE IS REACHED ON ANY PORTION OF THE SITE (2 DAYS FOR AREAS WITHIN 50' OF STREAM). PERMANENT VEGETATION IS A GROUND COVER DENSE ENOUGH TO COVER 80% OF THE SOIL SURFACE AND MATURE ENOUGH TO SURVIVE WINTER WEATHER CONDITION.
  2. ALL SEDIMENT AND EROSION CONTROLS SHALL BE INSPECTED ONCE EVERY 7 DAYS AND WITHIN 24 HOURS OF A 0.5" OR GREATER RAINFALL. A WRITTEN LOG OF THESE INSPECTIONS MUST BE KEPT. (DATES OF INSPECTION, WEATHER CONDITIONS, OBSERVATIONS, ACTIONS TAKEN TO CORRECT PROBLEM, AND DATE INFORMATION WAS TAKEN. WHEN SEDIMENT AND EROSION CONTROL STRUCTURES/DEVICES NEED REPAIRED/ALTERED, THE WORK SHALL BE COMPLETED WITHIN THREE (3) DAYS OF INSPECTION (SEDIMENT PONDS - REPAIR WITHIN 10 DAYS).
  3. NO SOLID OR LIQUID WASTE SHALL BE DISCHARGED INTO STORM WATER RUNOFF.
  4. CONSTRUCTION VEHICLES ARE LIMITED TO THE CONSTRUCTION ACCESS ROAD NOTED ON THE PLAN. (STABILIZED CONSTRUCTION ENTRANCE).
  5. OTHER EROSION CONTROL ITEMS MAY BE NECESSARY DUE TO ENVIRONMENTAL CONDITIONS.
  6. THE SOIL EROSION FOR THE SITE WILL BE CONTROLLED WITH THE USE OF A SEDIMENT BASIN, SILT FENCE, AND INLET PROTECTION.
- APPROXIMATE DISTURBED AREA = 11.06± ACRES.  
TOTAL SITE AREA = 30.60± ACRES.  
THIS PHASE OF PROJECT = 10.82± ACRES

## CONSTRUCTION SEQUENCE:

1. INSTALL ALL SEDIMENT CONTROL DEVICES (SEDIMENT BASINS, SILT FENCE, INLET PROTECTION, ETC.) AS PER THE OHIO STANDARDS FOR STORM WATER MANAGEMENT LAND DEVELOPMENT AND URBAN STREAM PROTECTION, RAINWATER AND LAND DEVELOPMENT MANUAL.
2. THE STARK SOIL AND WATER CONSERVATION DISTRICT MUST INSPECT AND APPROVE ALL SEDIMENT CONTROL DEVICES PRIOR TO ANY EARTH MOVING ACTIVITY. PRECONSTRUCTION MEETING IS REQUIRED.
3. CLEAR AND GRADE THE SITE - CONSTRUCT PROPOSED IMPROVEMENTS AND ALL UTILITIES.
4. PERMANENTLY STABILIZE ALL DISTURBED AREAS (ODOT 659). THE STARK SOIL AND WATER CONSERVATION DISTRICT MUST APPROVE ALL STABILIZATION PRIOR TO THE REMOVAL OF ANY SEDIMENT CONTROL DEVICES.

SEED, MULCH, FERTILIZE AND LIME REQUIREMENTS SHALL MEET THE OHIO DEPARTMENT OF TRANSPORTATION - CONSTRUCTION MATERIAL SPECIFICATIONS - ITEM 207 TEMPORARY SEDIMENT AND EROSION CONTROLS AND ITEM 659 SEEDING AND MULCHING. SEEDING METHODS SHALL BE PER ODOT 659.12 (INCLUDING SEEDING SCHEDULE INFORMATION).

## DISPOSAL OF SOLID, SANITARY AND TOXIC WASTE

SOLID, SANITARY AND TOXIC WASTE MUST BE DISPOSED OF IN A PROPER MANNER IN ACCORDANCE WITH LOCAL, STATE AND FEDERAL REGULATIONS. IT IS PROHIBITED TO BURN, BURY OR POUR OUT ONTO THE GROUND OR INTO STORM SEWERS ANY SOLVENTS, PAINTS, STAINS, GASOLINE, DIESEL FUEL, USED MOTOR OIL, HYDRAULIC FLUID, ANTIFREEZE, CEMENT CURING COMPOUNDS AND OTHER SUCH TOXIC OR HAZARDOUS WASTES. WASH OUT OF CEMENT TRUCKS SHOULD OCCUR IN A DIKED, DESIGNATED AREA WHERE THE WASTE CAN BE COLLECTED AND DISPOSED OF PROPERLY WHEN THEY HARDEN. STORAGE TANKS SHOULD BE LOCATED IN DIKED AREAS AWAY FROM DRAINAGE CHANNELS. THE DIKED AREA SHOULD HOLD A VOLUME 110% OF THE LARGEST TANK.

## CONTACT INFORMATION

FULCRUM ENTERPRISES  
2953 CARIE HILL CIRCLE NW  
MASSILLON, OHIO 44646  
330-830-6607 PHONE  
ATTN: DAVID DAUGHERTY

## PROJECT DESCRIPTION

PROJECT CONSISTS OF 12 STORAGE BUILDINGS (GRADING OPERATIONS AND UTILITY CONSTRUCTION). EROSION AND SEDIMENT CONTROL WILL BE HANDLED WITH SEDIMENT BASINS, SILT FENCE, STABILIZED CONSTRUCTION ENTRANCE, AND INLET PROTECTION.

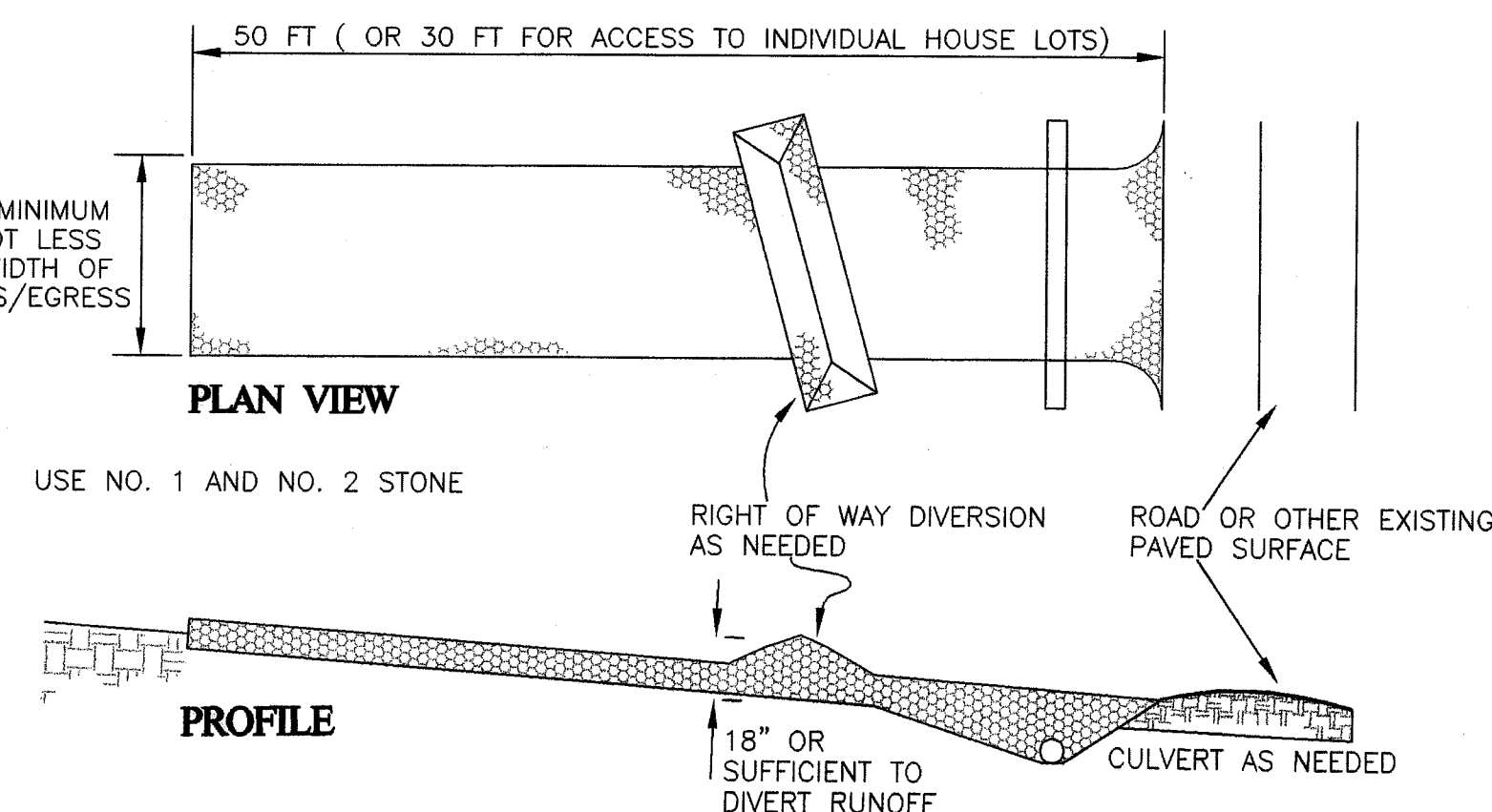
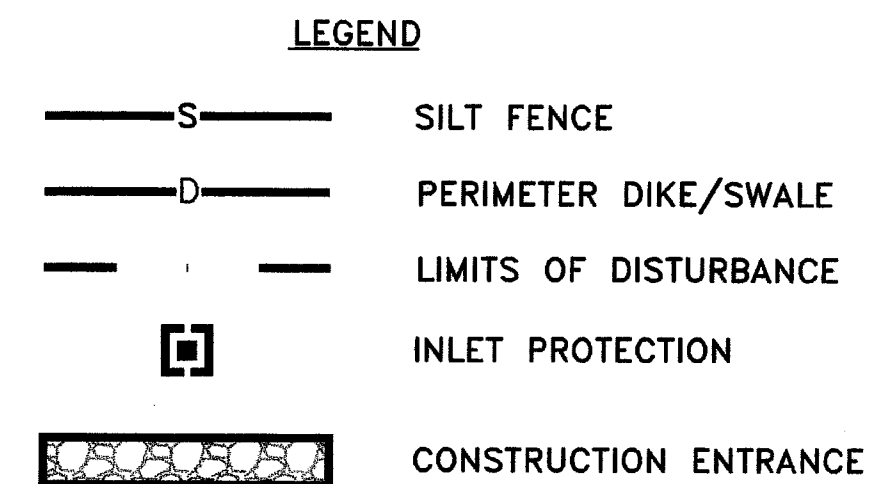
## SOIL TYPES

Wha - WEINBACH SILT LOAM  
CoC2 - CHILI GRAVELLY LOAM

## POST CONSTRUCTION BMP

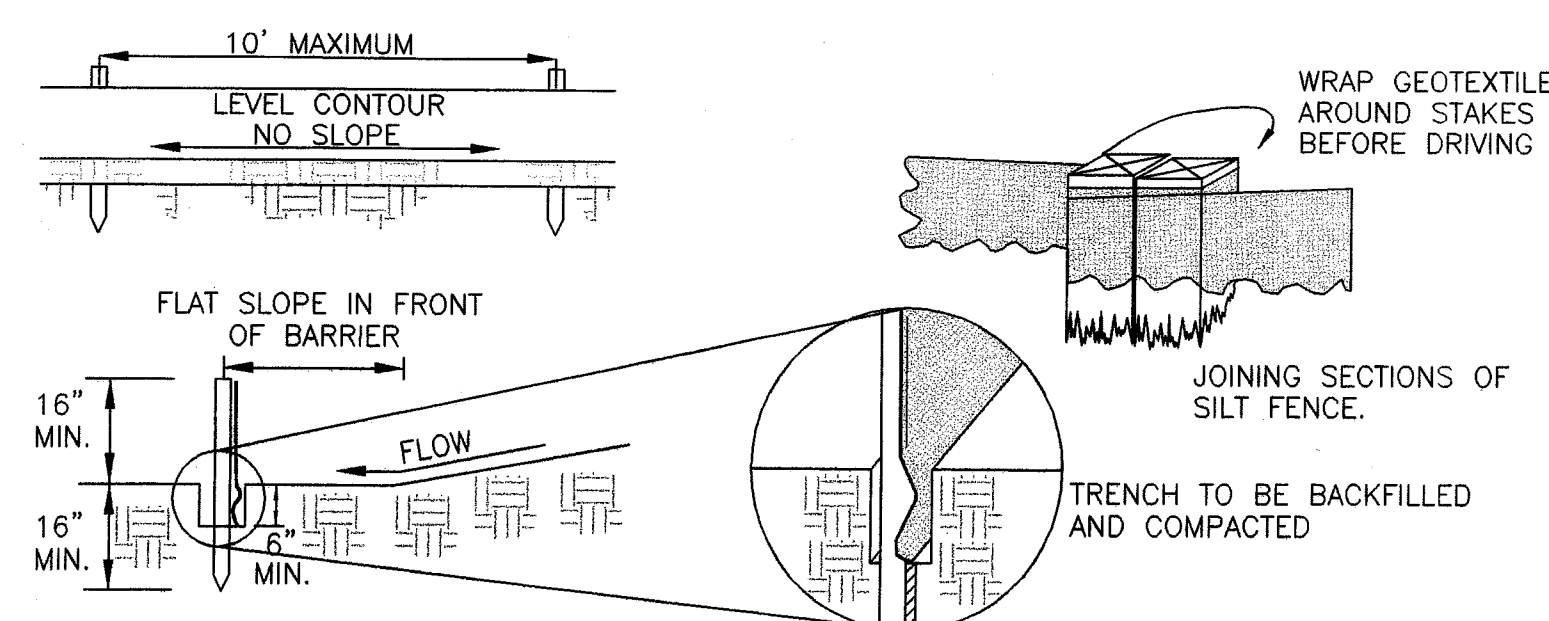
AN EXISTING STORM WATER DETENTION BASIN WAS CONSTRUCTED FOR PHASE I AND WILL BE ENLARGED TO SERVE BOTH PHASE I AND THE CURRENT PHASE (SEE SHEET 5 OF 7). THE PROPOSED DETENTION BASIN INCLUDES THE STORM WATER QUALITY VOLUME. REFER TO DRAINAGE CALCULATIONS FOR RUNOFF COEFFICIENTS, ETC. GRASS SWALES/DITCHES (GRASS FILTER STRIPS) ARE BEING UTILIZED ALONG THE EAST SIDE OF THE PROJECT SITE TO COLLECT STORM WATER RUNOFF.

FULCRUM ENTERPRISES WILL BE RESPONSIBLE FOR LONG TERM MAINTENANCE. TWO OR THREE TIMES A YEAR A VISUAL INSPECTION OF THE STORM WATER DETENTION BASIN WILL BE REQUIRED TO DETERMINE THE STATUS OF THE BASIN. ANY IMPROVEMENTS/REPAIRS WILL BE COMPLETED BASED ON THE RESULTS OF THESE INSPECTIONS.



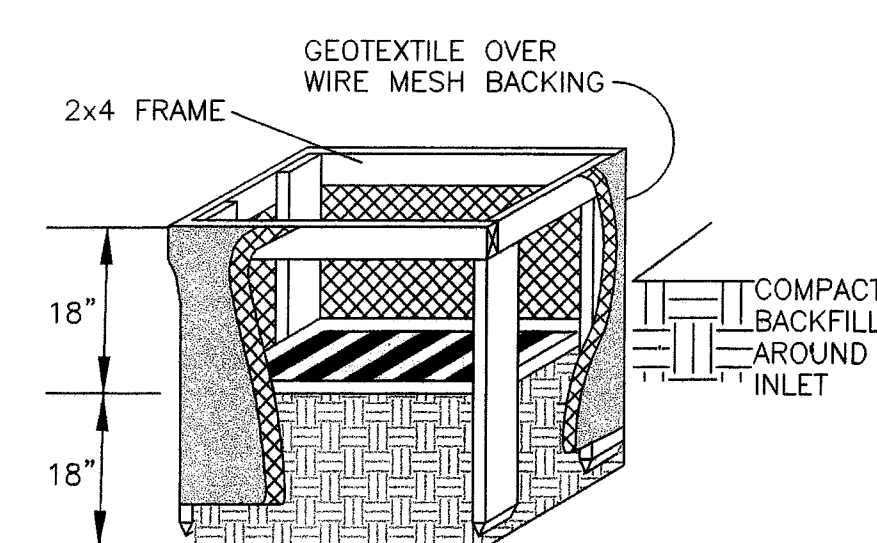
STABILIZED CONSTRUCTION ENTRANCE DETAIL

NOT TO SCALE



SILT FENCE DETAIL

NOT TO SCALE



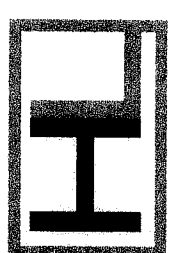
INLET PROTECTION DETAIL

NOT TO SCALE

## STORM WATER POLLUTION PREVENTION PLAN

Hettler, Largent  
Engineering LLC  
Civil & Construction Consultants

1225 North Main Street • Suite A • North Canton, OH 44720  
PH: 330-966-1776 • FX: 330-966-7911 • hettlereng@neo.rr.com



FULCRUM ENTERPRISES, LLC  
STORAGE BUILDINGS  
CITY OF MASSILLON  
STARK COUNTY, OHIO  
OUTLOT 656



