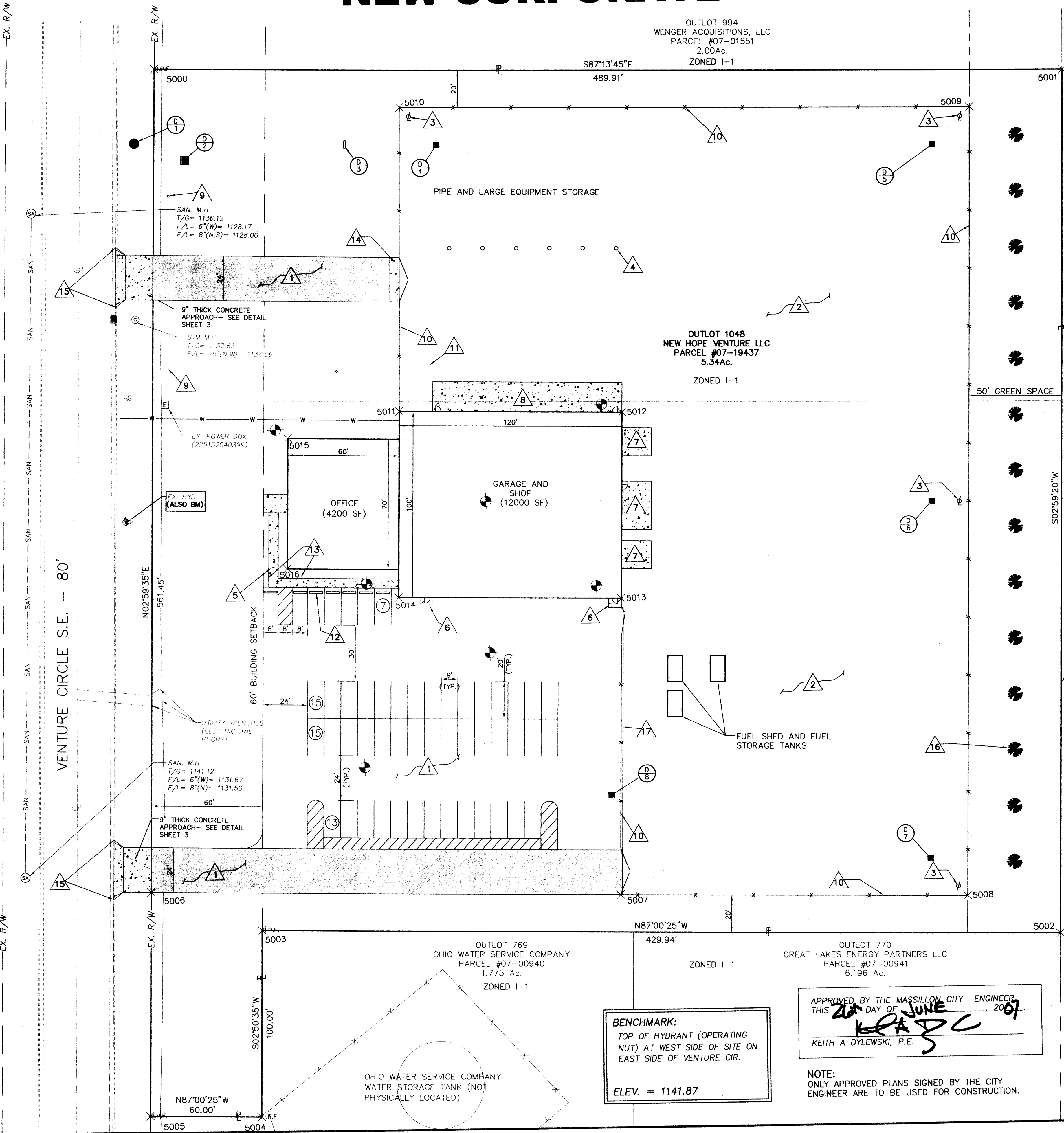


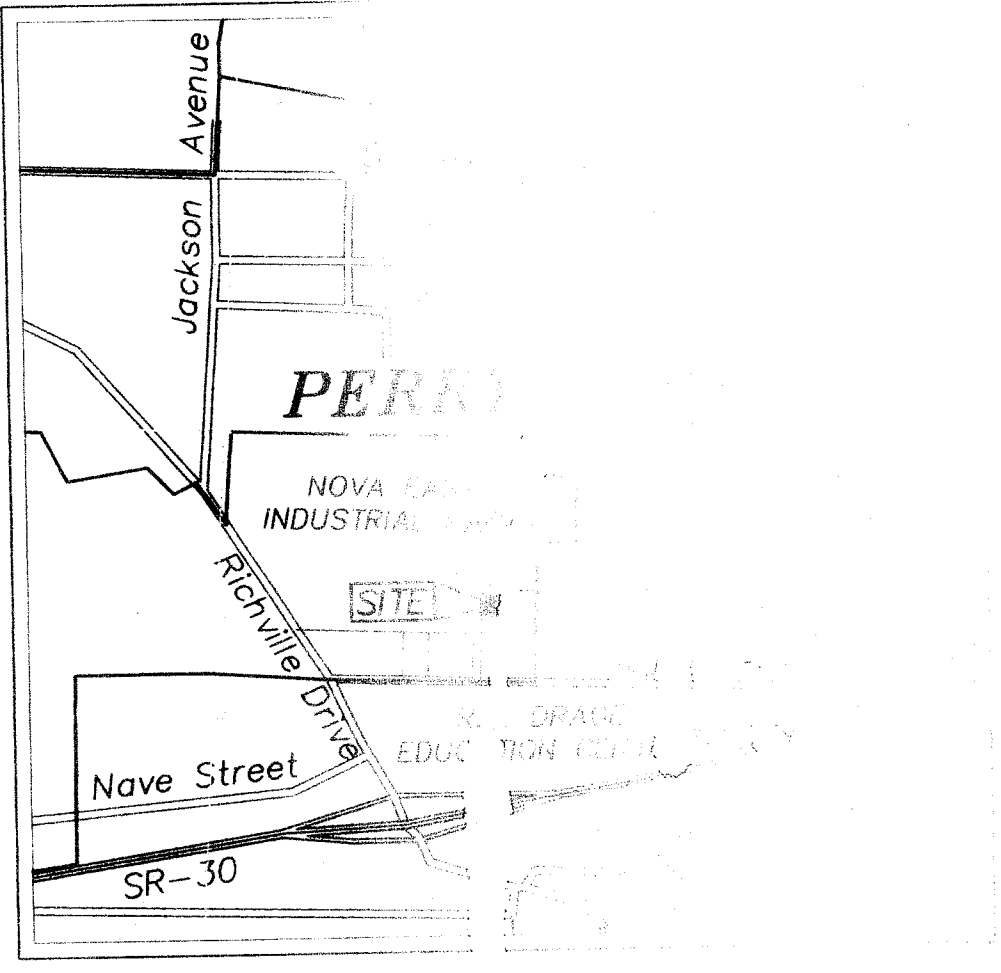
NEW CORPORATE FACILITY



DEVELOPER
NORMAN ECKINGER INC.
2500 KRISKO CIR. S.W.
CANTON, OHIO 44706
CONTACT: NORMAN ECKINGER
PHONE: (330) 452-6500
FAX: (330) 452-6530

OWNER
BILL HAWK INC.
2421 N. WOOSTER AVE
DOVER, OHIO 44622
CONTACT: JENINE M. OTTOBRE - VP
PHONE: (330) 364-7771
FAX: (330) 343-3240

NOTE:
MASSILLON SAFETY FORCES WILL
REQUIRE A KNOX BOX ON THE
PREMISES TO HAVE ACCESS TO THE
BUILDING AND ANY LOCKED GATES.



LOCATION MAP
NOT TO SCALE

INDEX OF SHEETS

- SITE & COORDINATE PLAN
- UTILITY & GRADING PLAN
- NOTES AND DETAILS
- EROSION CONTROL PLAN

LEGEND OF SYMBOLS AND ABBREVIATIONS

- PROPERTY LINE
- CENTERLINE
- EX. R/W
- R/W
- San
- SAN
- S
- SOIL BORING
- PARKING SPACE COUNT
TOTAL = 50 SPACES
- PROPERTY LINE
- CENTERLINE
- EXIST. RIGHT-OF-WAY
- PROP. RIGHT-OF-WAY
- EXIST. SANITARY SEWER
- PROP. SANITARY SEWER
- EXIST. STORM SEWER
- PROP. STORM SEWER
- SOIL BORING
- PARKING SPACE COUNT
TOTAL = 50 SPACES

KEY NOTES

- 1. ASPHALT PAVEMENT-SEE
DETAIL SHEET 3
- 2. GRAVEL PAVEMENT- SEE
DETAIL SHEET 3
- 3. LIGHT POLE-SEE BUILDING
PLANS
- 4. EXTERIOR RECEPTACLE MOUNTED TO
BOLLARD-SEE BUILDING PLANS
- 5. 5" CONCRETE WALK (5'
WIDE)-SEE BUILDING PLANS
- 6. 5" CONCRETE STOOP (7'x5')
-SEE BUILDING PLANS
- 7. 6" CONCRETE APRON
-SEE BUILDING PLANS
- 8. 8" CONCRETE APRON
(102'x16')-SEE BUILDING PLANS
- 9. SANITARY CLEANOUT-SEE
DETAIL SHEET 3
- 10. 6" HIGH CHAIN LINK FENCE
-SEE BUILDING PLANS
- 11. 5'x8' OIL & GREASE SEPARATOR
-SEE SHEET 3
- 12. WHEEL STOPS (7)
- 13. HANDICAP SIGN AS PER DMVCD R7-8,
WITH SIGN OMITTED R7-H8B UNDERNEATH
- 14. 8" CONCRETE APRON
(24'x5')-SEE BUILDING PLANS
- 15. SAW CUT CURB PER CITY OF
MASSILLON STD.
- 16. 5' EVERGREENS PLANTED 30'
ON CENTER, ON CENTER OF
LANDSCAPE MOUND
- 17. END ASPHALT PAVEMENT 1'
EAST OF FENCE LINE

COORDINATE TABLE				COORDINATE TABLE			
POINT	NORTHING	EASTING	DESCRIPTION	POINT	NORTHING	EASTING	DESCRIPTION
5000	11128.33048	11177.31731	PROP. CORNER	5010	11101.95871	11308.48758	FENCE
5001	11104.64738	11666.65879	PROP. CORNER	5011	10939.18137	11300.60967	BLDG CORNER
5002	10641.92488	11642.49851	PROP. CORNER	5012	10932.91483	11426.44591	BLDG CORNER
5003	10664.37436	11213.14123	PROP. CORNER	5013	10833.05128	11415.22383	BLDG CORNER
5004	10564.51077	11207.91974	PROP. CORNER	5014	10839.31781	11295.38755	BLDG CORNER
5005	10567.64367	11148.00159	PROP. CORNER	5015	10927.33520	11215.50811	BLDG CORNER
5006	10687.48055	11154.26731	EP @ R/W	5016	10857.43071	11215.55275	BLDG CORNER
5007	10674.26790	11406.92022	FENCE				
5008	10664.50479	11593.60937	FENCE				
5009	11087.09153	11615.67403	FENCE				

APPROVED BY THE MASSILLON CITY ENGINEER
THIS 21ST DAY OF JUNE, 2007.
KEITH A DYLEWSKI, P.E.

NOTE:
ONLY APPROVED PLANS SIGNED BY THE CITY
ENGINEER ARE TO BE USED FOR CONSTRUCTION.

BENCHMARK:
TOP OF HYDRANT (OPERATING
NUT) AT WEST SIDE OF SITE ON
EAST SIDE OF VENTURE CIR.
ELEV. = 1141.87

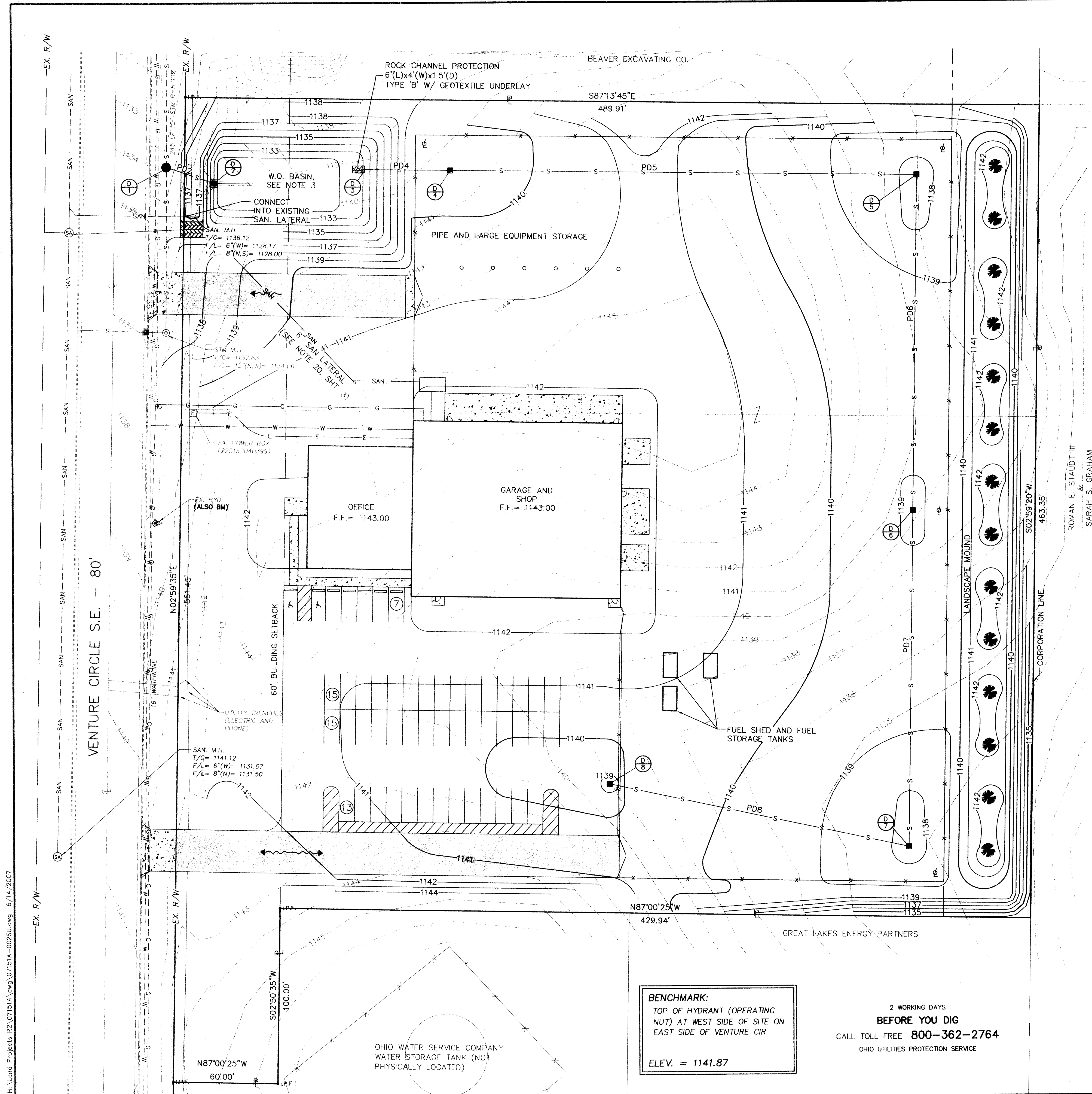
REVISIONS

NO.	DATE	BY	DESCRIPTION
1	6/13/07	BUB	NOVA INDUSTRIAL
2	6/12/07	MJS	EDUCATION CENTER
3	5/4/07	MJS	GENERAL & CLIENT COMMENTS

COOPER & ASSOCIATES, LLP
ENGINEERS AND SURVEYORS
1888 MARKET AVENUE NORTH
CANTON, OHIO 44714
PHONE (330) 452-5731
FAX NO (330) 452-9110

NEW CORPORATE FACILITY
SITUATED IN OUTLOT 1048, LOCATED
IN THE CITY OF MASSILLON,
STARK COUNTY, OHIO
FOR: BILL HAWK INC.

SITE PLAN
DRAWN BY: M.J.S.
CHECKED BY: B.J.A.
DATE: 4/27/2007
SHEET 1 OF 4
PROJ. # 07151A



STORM SEWER DATA

D-1: ODOT M.H. No. 3 (5' Ø)
(CONSTRUCT-ON-LINE)
T/R= 1134.80
F/L 24"(SE)= 1129.80
EX. F/L 15"(N,S)= 1129.411

D-2: ODOT CATCH BASIN 2-3
(MOD.)(SEE DETAIL, SHT. 3)
T/G= 1136.05
F/L WINDOW(E)= 1135.13
F/L 1.25"(E)= 1130.30
F/L 4"(E)= 1130.17
F/L 24"(NW)= 1129.87
PD2: 29LF 24" STM R=0.25%

D-3: HEADWALL
(ODOT HW-2.1 OR ODOT HW-2.2)
F/L24"(E)= 1132.19

D-4: ODOT CATCH BASIN 2-3B
T/G= 1139.00
F/L 24"(E,W)= 1132.34
PD4: 50LF 24" STM R= 0.30%

D-5: ODOT CATCH BASIN 2-3B
T/G= 1137.50
F/L 24"(S,W)= 1133.02
PD5: 270LF 24" STM R=0.25%

D-6: ODOT CATCH BASIN 2-3B
T/G= 1138.50
F/L 24"(N,S)= 1133.40
PD6: 192LF 24" STM R= 0.20%

D-7: ODOT CATCH BASIN 2-3B
T/G= 1137.50
F/L 15"(NW)= 1134.44
F/L 24"(N)= 1133.69
PD7: 192LF 24" STM R= 0.15%

D-8: ODOT CATCH BASIN 2-2B
T/G= 1138.75
F/L 15"(SE)= 1135.75
PD8: 175LF 15" STM R= 0.75%

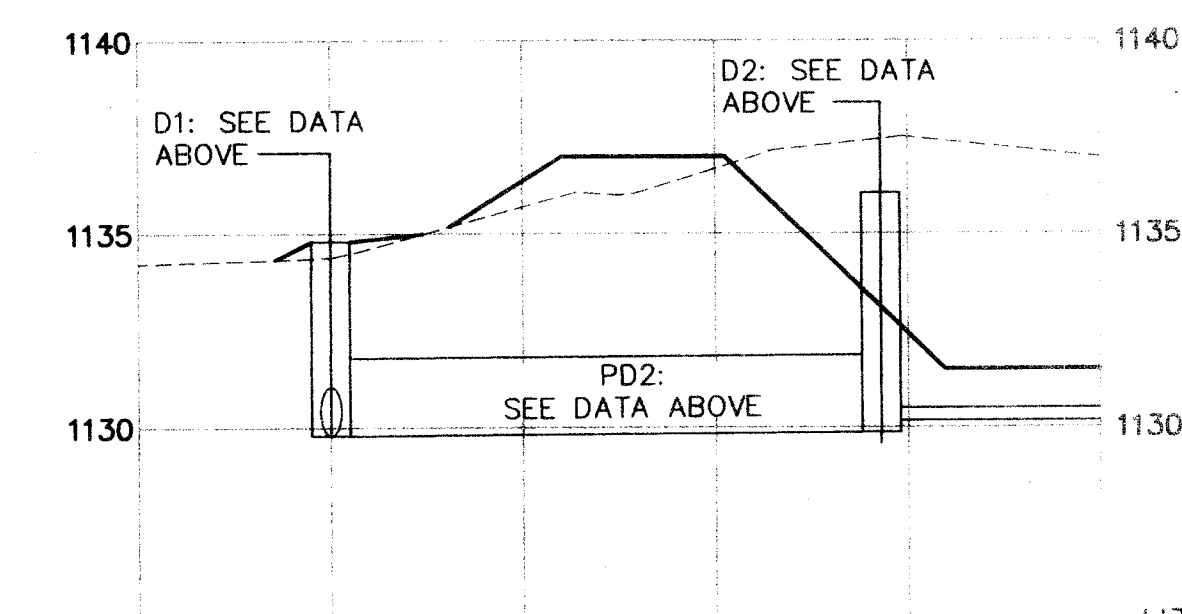
NOTES:

- THE CATCH BASINS AND MANHOLES SHALL BE CONSTRUCTED IN ACCORDANCE WITH ODOT'S MOST RECENT STANDARD CONSTRUCTION DRAWINGS (SCD) AS REFERENCED BELOW.
- CATCH BASIN 2-2B PER SCD CB-1.1
- CATCH BASIN 2-3 PER SCD CB-1.2
- MANHOLE No. 3 PER SCD MH-1.2
- EARTHWORK QUANTITIES
- CUT VOLUME= 10,800 CU. YDS.
- FILL VOLUME= 7,400 X 1.1= 8,140 CU. YDS.
- NET= 2,660 EXCESS CU.YDS.
- FOR SEDIMENT TRAPPING CAPABILITIES, THE W.Q. BASIN SHOWN SHALL BE MODIFIED WITH A TEMPORARY RISER PIPE IN PLACE OF STORM STRUCTURE 'D2' AND BE OPERATIONAL BEFORE UPSLOPE LAND DISTURBANCE BEGINS. SEE SHEET 4 FOR DETAILS AND DESCRIPTIONS.

WATER QUALITY SUMMARY

PRACTICES BEING UTILIZED = 48 HR. EXT. DETENTION
WATER QUALITY VOLUME REQ. = 10,302 CF
2,060 CF (ADD. FOR SEDIMENT)

WQV PROVIDED FOR EXT. DETENTION = 12,400 CF



BENCHMARK:
TOP OF HYDRANT (OPERATING
NUT) AT WEST SIDE OF SITE ON
EAST SIDE OF VENTURE CIR.

ELEV. = 1141.87

2 WORKING DAYS
BEFORE YOU DIG
CALL TOLL FREE **800-362-2764**
OHIO UTILITIES PROTECTION SERVICE

UTILITY AND GRADING PLAN

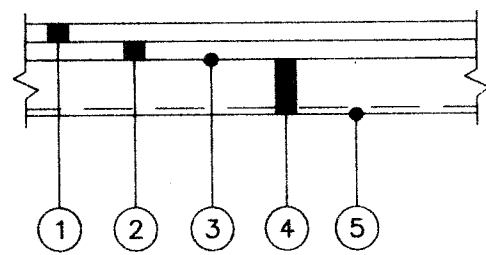
<p>REVISIONS</p>			
NO.	DATE	BY	REVISION
1	6/13/07	BBB	WQ BASIN
2	6/12/07	MJS	MASSILLON ENG. COMMENTS
3	5/4/07	MJS	GENERAL & CLIENT COMMENTS

BRYAN J. ASHMAN
 JEROLD E. GEIB
COOPER & ASSOCIATES, LLP
 ENGINEERS AND SURVEYORS
 1359 MARKET AVENUE NORTH
 CANTON, OHIO 44704
 PHONE (330) 452-8731
 FAX (330) 452-9110

UTILITY AND GRADING PLAN
NEW CORPORATE FACILITY
 SITUATED IN OUTLOT 1048, LOCATED
 IN THE CITY OF MASSILLON,
 STARK COUNTY, OHIO
 FOR: BILL HAWK INC.

DRAWN BY: M.J.S.
 CHECKED BY: B.J.S.
 DATE: 4/27/2007
 SHEET: 2 OF 4
 PROJ.# 07151A

H:\Land Projects R2\07151A.dwg 6/14/2007

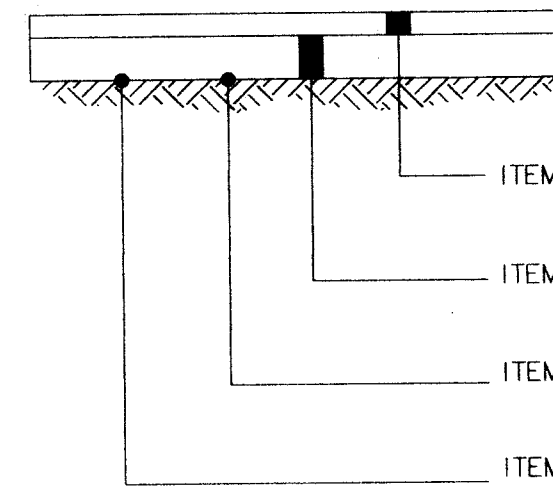


- 1 ITEM 448 - 1" ASPHALT CONCRETE SURFACE COURSE, TYPE 1
2 ITEM 448 - 3" ASPHALT CONCRETE INTERMEDIATE COURSE, TYPE 2
3 ITEM 408 - BITUMINOUS PRIME COAT (0.4 GAL./S.Y.)
4 ITEM 304 - 6" AGGREGATE BASE
5 ITEM 203 - COMPACTED SUBGRADE
- 1 ITEM 448 - 1" ASPHALT CONCRETE SURFACE COURSE, TYPE 1
2 ITEM 448 - 4" ASPHALT CONCRETE INTERMEDIATE COURSE, TYPE 2
3 ITEM 408 - BITUMINOUS PRIME COAT (0.4 GAL./S.Y.)
4 ITEM 304 - 6" AGGREGATE BASE
5 ITEM 203 - COMPACTED SUBGRADE

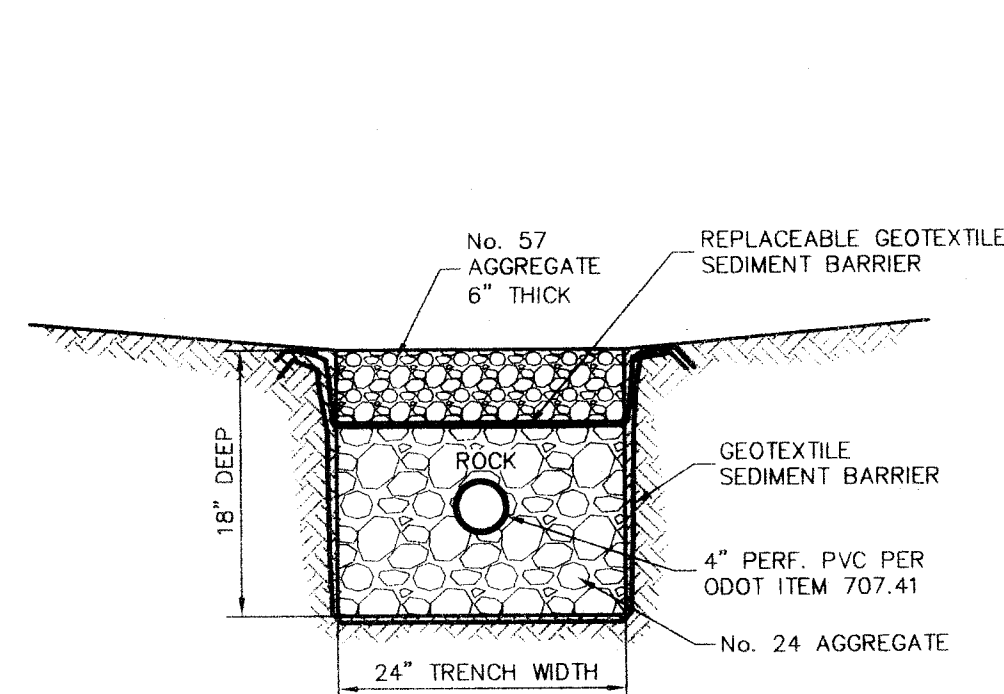
TYP. PAVEMENT SECTION

HEAVY DUTY PAVEMENT SECTION

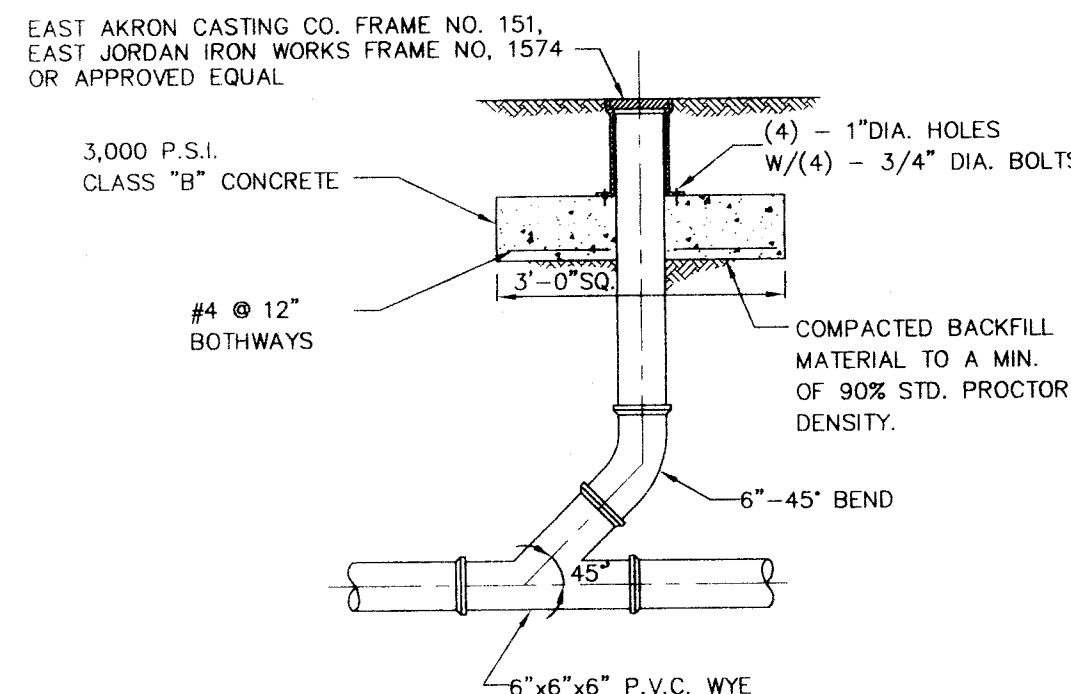
PAVEMENT SECTIONS



GRAVEL PAVEMENT TYP. SECTION



GRAVEL TRENCH W/ UNDERDRAIN



SANITARY CLEANOUT

PARKING REQUIREMENTS:

INDUSTRIAL
FIVE PARKING SPACES PLUS ONE FOR EVERY ONE AND ONE HALF EMPLOYEES IN THE LARGEST WORKING SHIFT. SPACE ON SITE SHALL ALSO BE PROVIDED FOR ALL CONSTRUCTION WORKERS DURING PERIODS OF PLANT CONSTRUCTION.

47 EMPLOYEES/1.5 = 32 + 5 = 37 SPACES REQUIRED

TOTAL PARKING SPACES ON SITE = 50

NOTES:

- ALL WORK SHALL BE DONE IN ACCORDANCE WITH THE APPLICABLE CODES AND ORDINANCES OF THE CITY OF MASSILLON, IN LIEU OF ANY MUNICIPAL REGULATIONS PERTINENT TO A SUBJECT ITEM TO BE CONSTRUCTED, THE CONTRACTOR SHALL BE BOUND BY THE STATE OF OHIO - DEPARTMENT OF TRANSPORTATION - CONSTRUCTION & MATERIAL SPECIFICATIONS DATED JANUARY 1, 2005 (HEREINAFTER REFERRED TO AS ODOT SPECIFICATIONS) PLUS ANY REFERENCED ODOT STANDARD CONSTRUCTION DRAWING.
- THE CONTRACTOR SHALL BE RESPONSIBLE FOR OBTAINING ALL PERMITS REQUIRED FOR THIS PROJECT.
- EXISTING FIELD CONDITIONS SHALL BE FIELD CHECKED AND VERIFIED BY THE CONTRACTOR PRIOR TO BIDDING. SHOULD THERE BE ANY DISCREPANCY BETWEEN THE PLANS AND EXISTING FIELD CONDITIONS, THE CONTRACTOR SHALL SEEK WRITTEN CLARIFICATION FROM THE ENGINEER PRIOR TO THE BID SUBMISSION. SHOULD THE CONTRACTOR ENCOUNTER THESE PLANS AND SPECIFICATIONS, EITHER AMONG THEMSELVES OR WITH THE REQUIREMENTS OF ANY AND ALL REVIEWING AND PERMIT-ISSUING AGENCIES, THE CONTRACTOR SHALL SEEK CLARIFICATION IN WRITING FROM THE ENGINEER PRIOR TO BID SUBMISSION.
- IT SHALL BE THE CONTRACTOR'S RESPONSIBILITY TO USE CONSTRUCTION MEANS AND METHODS THAT WILL PROTECT PROPERTY AND PREVENT BODILY INJURY AND/OR DEATH. THE CONTRACTOR SHALL COMPLY WITH THE SAFETY REQUIREMENTS OF CITY, STATE, AND FEDERAL GOVERNMENTS.
- CONSTRUCTION SHALL BE PERFORMED, AND EQUIPMENT STORED, IN A MANNER WHICH PERMITS EXISTING FACILITIES TO PERFORM WITHOUT INTERRUPTION.
- THE CONTRACTOR SHALL PERFORM WORK SO AS TO NOT DISTURB, DAMAGE OR DESTROY ANY MAILBOX, PAPER BOX, TELEPHONE OR POWER POLES, SIGNS, FENCES, RETAINING WALLS, LANDSCAPING ITEMS, ETC. ANY ITEM DAMAGED SHALL BE REPLACED AT THE CONTRACTOR'S EXPENSE. ANY ITEM DISTURBED OR IN CONFLICT WITH THE WORK TO BE PERFORMED SHALL BE REMOVED AND RESET AT THE CONTRACTOR'S EXPENSE, UNLESS OTHERWISE NOTED ON THE PLANS.
- THE CONTRACTOR SHALL BE RESPONSIBLE FOR CLEARING AND GRUBBING, WHICH SHALL BE PERFORMED IN ACCORDANCE WITH THE REQUIREMENTS OF ODOT ITEM 201. THIS WORK SHALL CONSIST OF CLEARING, GRUBBING, SCALPING, REMOVAL OF TREES AND STUMPS, AND REMOVING AND DISPOSING OF ALL VEGETATION AND DEBRIS WITHIN THE LIMITS DESIGNATED ON THE PLANS.
- ALL ELEVATIONS ON THESE PLANS ARE BASED ON A LOCAL BENCH MARK WHICH WAS USED IN THE INDUSTRIAL PARK INFRASTRUCTURE IMPROVEMENT PLANS.
- REMOVE ALL TREES AND STUMPS WITHIN THE WORK IMPROVEMENT AREA UNDER THE LUMP SUM BID FOR ITEM 201, CLEARING AND GRUBBING.
- CONSTRUCT AND MAINTAIN EROSION AND SEDIMENT CONTROLS IN ACCORDANCE WITH THE STORM WATER POLLUTION PREVENTION PLAN.
- THE LOCATION OF THE UNDERGROUND UTILITIES SHOWN ON THE PLANS ARE AS OBTAINED FROM THE OWNERS AS REQUIRED BY SECTION 153.64 ORC. LISTED BELOW ARE ALL UTILITIES LOCATED WITHIN THE PROJECT CONSTRUCTION LIMITS TOGETHER WITH THEIR RESPECTIVE OWNERS:

GREAT LAKES ENERGY PARTNERS
P.O. BOX 560
HARTVILLE, OHIO 44632
CONTACT = ED HAAS
PHONE = 330-857-1221

NE OHIO OPERATING CO
5640 LANCASTER-NEWARD RD NE
PLEASANTVILLE, OHIO 43148
CONTACT = HOBY GRIEST
PHONE = 740-862-3300

FIRST ENERGY
2600 ERIE STREET S.
MASSILLON, OHIO 44646
CONTACT = LUKE SAGE
PHONE = 330-830-7046

MASSILLON CABLE
814 CABLE COURT NW
MASSILLON, OHIO 44648
CONTACT = JEFF CAMPBELL
PHONE = 330-833-4134

DOMINION EAST OHIO - GAS
7015 FREEDOM AVENUE NW
NORTH CANTON, OHIO 44720
CONTACT = HARVEY YERGIN
PHONE = 330-266-2049

CITY OF MASSILLON ENGINEERS
151 LINCOLNWAY EAST
MASSILLON, OHIO 44646
CONTACT = JASON HAINES
PHONE = 330-830-1722

AQUA OHIO INC.
870 THIRD STREET NW
MASSILLON, OHIO 44647
CONTACT = DON SNYDER
PHONE = 330-832-7600

12. WHERE PLANS PROVIDE FOR A PROPOSED CONDUIT TO BE CONNECTED TO, OR CROSS OVER OR UNDER AN EXISTING SEWER OR UNDERGROUND UTILITY, THE CONTRACTOR SHALL LOCATE THE EXISTING PIPES OR UTILITIES BOTH AS TO LINE AND GRADE BEFORE STARTING TO LAY THE PROPOSED CONDUIT. IF IT IS DETERMINED THAT THE ELEVATION OF THE EXISTING CONDUIT (OR APPURTENANCE) TO BE CONNECTED DIFFERS FROM THE PLAN ELEVATION OR RESULTS IN A CHANGE IN THE PLAN CONDUIT SLOPE, THE ENGINEER SHALL BE NOTIFIED BEFORE STARTING CONSTRUCTION OF ANY PORTION OF THE PROPOSED CONDUIT WHICH WILL BE AFFECTED BY THE VARIANCE IN THE EXISTING ELEVATIONS.
- THIS PLAN UTILIZES STRUCTURAL BEST MANAGEMENT PRACTICES (BMP'S) FOR POST CONSTRUCTION STORM WATER TREATMENT.
a. THIS PLAN UTILIZES MANUFACTURED WATER QUALITY STRUCTURES FOR WATER QUALITY TREATMENT. AREAS HAVE BEEN SHOWN IN THE PLANS FOR PLACEMENT OF AN OFF-LINE SYSTEM. THIS STRUCTURE SHALL BE IN CONFORMANCE WITH ITEM 603, MANUFACTURED WATER QUALITY STRUCTURE. CONTRACTOR SHALL SUBMIT SHOP DRAWINGS TO ENGINEER FOR APPROVAL.
b. PARKING LOT EARTHWORK AND EXCAVATION WORK SHALL BE IN ACCORDANCE WITH ODOT ITEM 203 - ROADWAY EXCAVATION AND EMBANKMENT. SUBGRADE COMPACTION SHALL BE IN ACCORDANCE WITH ODOT ITEM 204 - SUBGRADE COMPACTION.
- PLACE PROPOSED PAVEMENT IN THE LOCATIONS REPRESENTED ON THE PLANS AND IN ACCORDANCE WITH THE REQUIREMENTS OF THE REFERENCED ODOT ITEMS AND THE TYPICAL SECTIONS SHOWN ON THE PLANS.
- STORM SEWERS SHALL BE INSTALLED IN ACCORDANCE WITH THE REQUIREMENTS OF ODOT ITEM 603. BEDDING AND BACKFILL SHALL BE IN ACCORDANCE WITH THE REQUIREMENTS OF ODOT STANDARD CONSTRUCTION DRAWING (SCD) DM-1.4 - CONDUIT INSTALLATION.
- UNLESS OTHERWISE NOTED, ALL STORM SEWER INSTALLATIONS ARE TO BE INSTALLED USING TYPE B CONDUITS WITH CLASS B BEDDING IN ACCORDANCE WITH THE REQUIREMENTS OF ODOT ITEM 603. ONE OF THE FOLLOWING MATERIALS SHALL BE USED:
a. REINFORCED CONCRETE PIPE (RCP) IN ACCORDANCE WITH ODOT ITEM 706.02.
b. HIGH-DENSITY CORRUGATED POLYETHYLENE (HDPE) SMOOTH LINED PIPE IN ACCORDANCE WITH ODOT ITEM 707.33.
c. POLYVINYL CHLORIDE SOLID WALL PIPE (PVC) IN ACCORDANCE WITH ODOT ITEM 707.45, 8" DIAMETER AND SMALLER ONLY.
- CONSTRUCT ALL MANHOLES, CATCH BASINS, AND INLETS REPRESENTED ON THE PLANS IN ACCORDANCE WITH THE REQUIREMENTS OF ODOT ITEM 604. THIS SHALL INCLUDE ALL APPURTENANCES NECESSARY TO PROVIDE A COMPLETE FINISHED STRUCTURE, SUCH AS CAST FRAMES, GRATES, COVERS, STEPS AND OTHER SPECIFIED MATERIALS.
- ALL CATCH BASINS LOCATED IN PAVED AREAS SHALL BE EQUIPPED WITH BICYCLE SAFE GRATES. BICYCLE SAFE GRATES SHALL BE NEENAH No. R-4859-C, EAST JORDAN IRON WORKS No. 5110 TYPE M3 OR EQUAL.
- THE SANITARY SERVICE SEWER SHALL BE CONSTRUCTED IN ACCORDANCE WITH THE REQUIREMENTS OF ODOT ITEM 603 - PIPES CULVERTS, SEWERS, AND DRAINS USING POLYVINYL CHLORIDE SOLID WALL PIPE (ASTM D 3034, SDR 35) IN ACCORDANCE WITH ITEM 707.45 AND INSTALLED AT A MINIMUM RATE OF 1.00%.
- CONCRETE SIDEWALKS AND CURB RAMPS SHALL BE CONSTRUCTED IN ACCORDANCE WITH THE REQUIREMENTS OF ODOT ITEM 608 - WALKS, CURB RAMPS, AND STEPS AND THE PLAN DETAILS.
- WATER SERVICE LINE SHALL BE CONSTRUCTED IN ACCORDANCE WITH THE REQUIREMENTS OF THE OHIO WATER SERVICE COMPANY AND ODOT ITEM 638.
- PAVEMENT MARKINGS SHALL BE IN ACCORDANCE WITH ITEM 642 - TRAFFIC PAINT. PARKING STRIPES SHALL BE 4" WIDE YELLOW PARKING LOT STALL MARKING, TYPE 2.
- SEED AND MULCH ALL DISTURBED AND PROPOSED YARD AREAS IN ACCORDANCE WITH THE REQUIREMENTS OF ODOT ITEM 659. USE TYPE 1 - LAWN MIXTURE UNLESS OTHERWISE SPECIFIED. PLACE A MINIMUM OF 4" TOPSOIL OVER ALL AREAS TO RECEIVE SEEDING AND MULCHING.

CONTROL STRUCTURE DATA:

Riser specification _____ ODOT 2-3, MOD. AS SHOWN
T/Gate elevation _____ 1136.05

WATER QUALITY CONTROL DATA

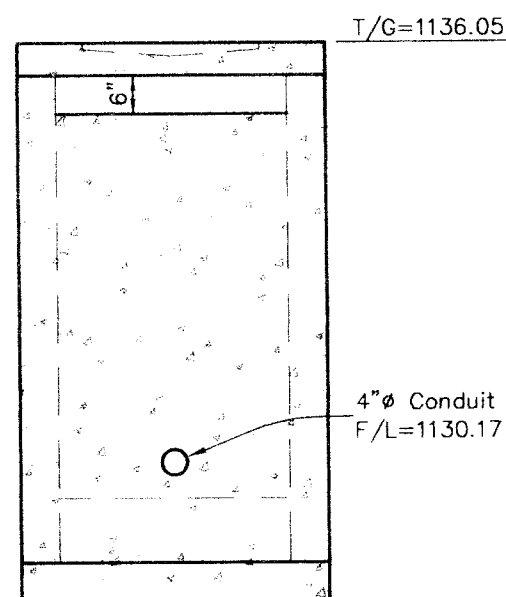
Orifice diameter _____ 1.00"
Outlet pipe specification _____ 4" Perf. PVC Per ODOT Item 707.41
1" Orifice invert elevation _____ 1130.30
4" pipe invert elev. @ C.B. _____ 1130.17 } See Note 1

STABILIZER AND ANCHOR STRAP:

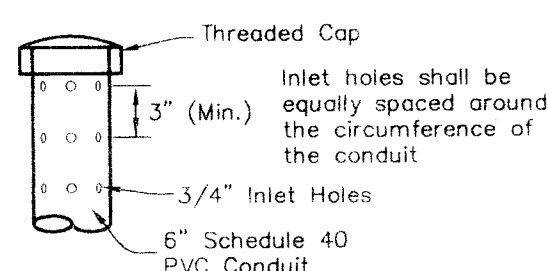
Securely fasten the riser pipe to the basin in the vertical position using a stabilizer and anchor strap that consists of a universal clamp or a strap and a block. All metal components shall be galvanized or stainless steel. All other materials shall be rot resistant.

NOTES:

- FOR THE WATER QUALITY, IT IS INTENDED FOR THE 1" ORIFICE TO BE CENTERED ON THE 4" PLUG.
- THIS STRUCTURE SHALL BE EQUIPPED WITH STEPS AND MEET THE REQUIREMENTS OF ODOT'S SCD MH-1.1.
- SEE THE STORM WATER POLLUTION PREVENTION PLAN, SHEET 4, FOR TEMPORARY MODIFICATIONS TO CONVERT THE SWM BASIN INTO A SEDIMENT BASIN.
- FILL THE BOTTOM OF THE CATCH BASIN WITH CONCRETE FOR BOUYANCY PURPOSES.

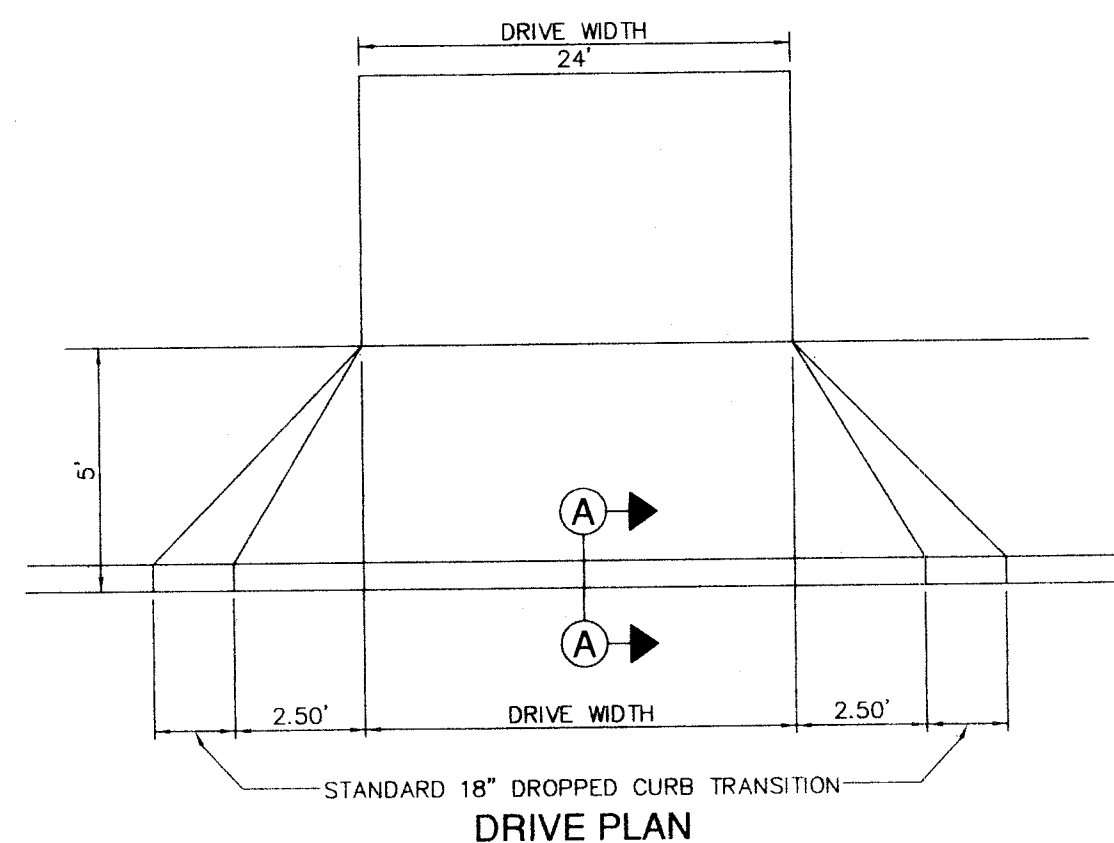


SECTION A-A

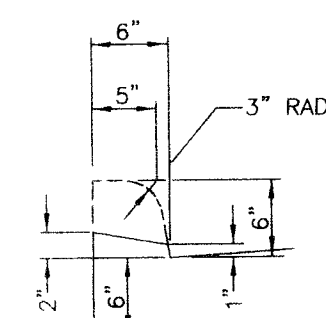


PERFORATED RISER
Not to Scale

WQ BASIN CONTROL STRUCTURE DETAIL



DRIVE PLAN



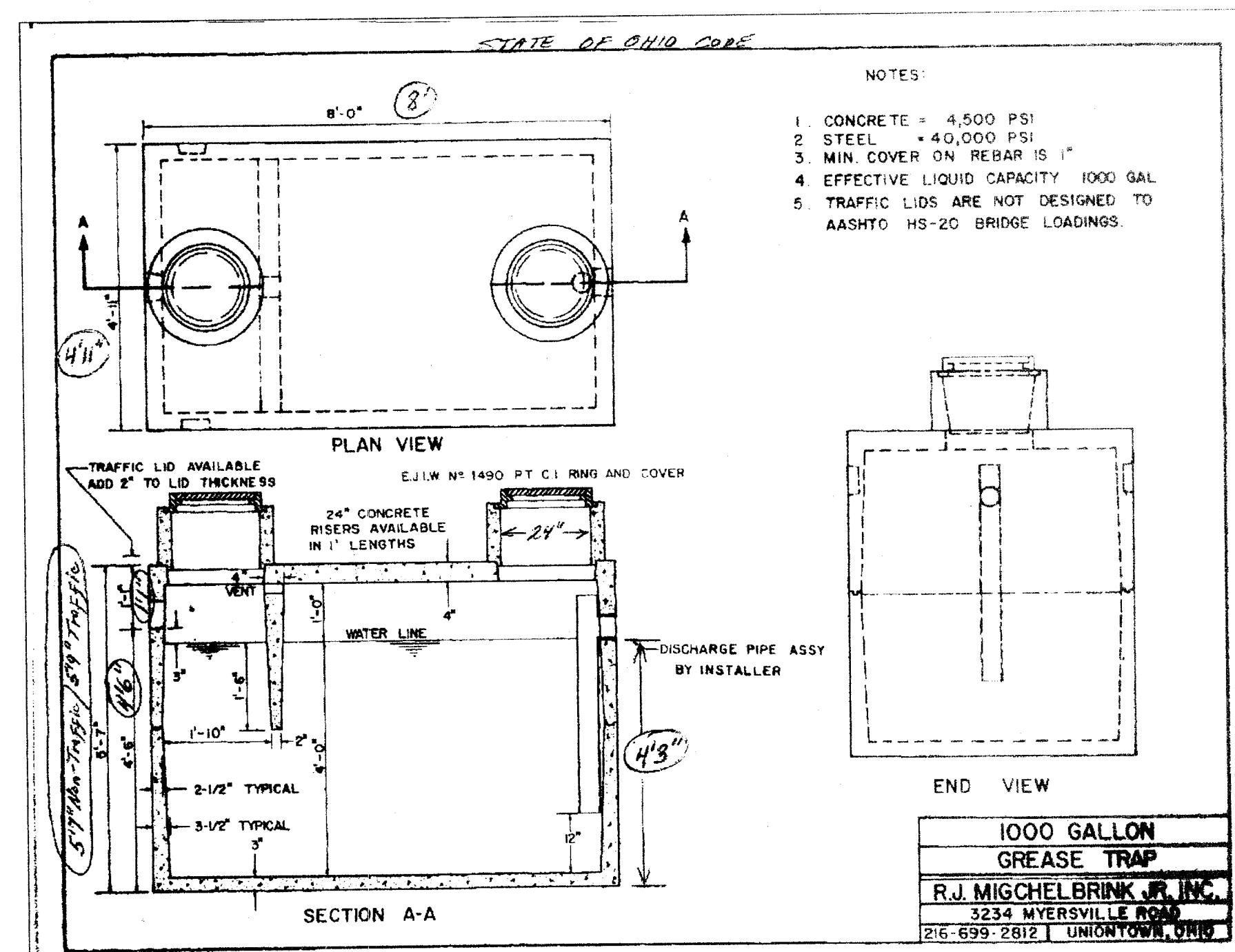
A-A

NOTE

ANY DEVIATION FROM THIS MUST BE APPROVED BY THE CITY ENGINEER. CONCRETE SHALL BE 4000 PSI CLASS C

DRIVE PROFILE

DRIVE DETAIL



NOTES & DETAILS

REVISIONS		DATE	BY	REASON
1		6/13/07	BDB	WQ BASIN
2		6/12/07	MJS	MASSILLON ENG. COMMENTS
3		5/14/07	MJS	GENERAL & CLIENT COMMENTS

BRYAN J. ASHMAN
JEROLD E. CEIB

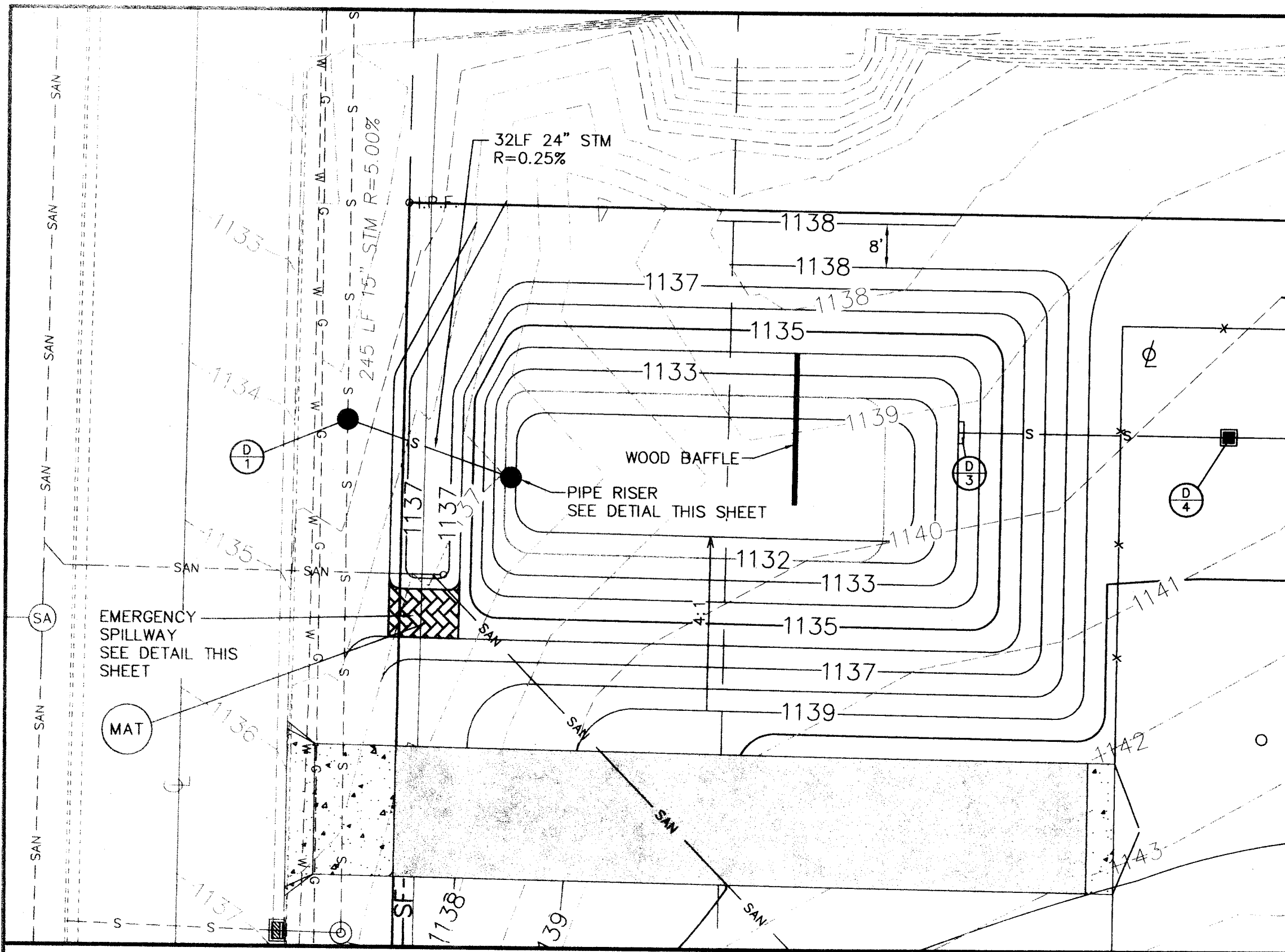
COOPER & ASSOCIATES, LLP
ENGINEERS AND SURVEYORS



1350 MARKET
AVENUE NORTH
CANTON, OHIO
44704

NOTES & DETAILS
NEW CORPORATE FACILITY
SITUATED IN OUTLOT 1048, LOCATED
IN THE CITY OF MASSILLON,
IN STARK COUNTY, OHIO
FOR: BILL HAWK INC.

DRAWN BY: M.J.S.
CHECKED BY: B.J.A.
DATE: 4/27/2007
SHEET 3 OF 4
PROJ.# 07151



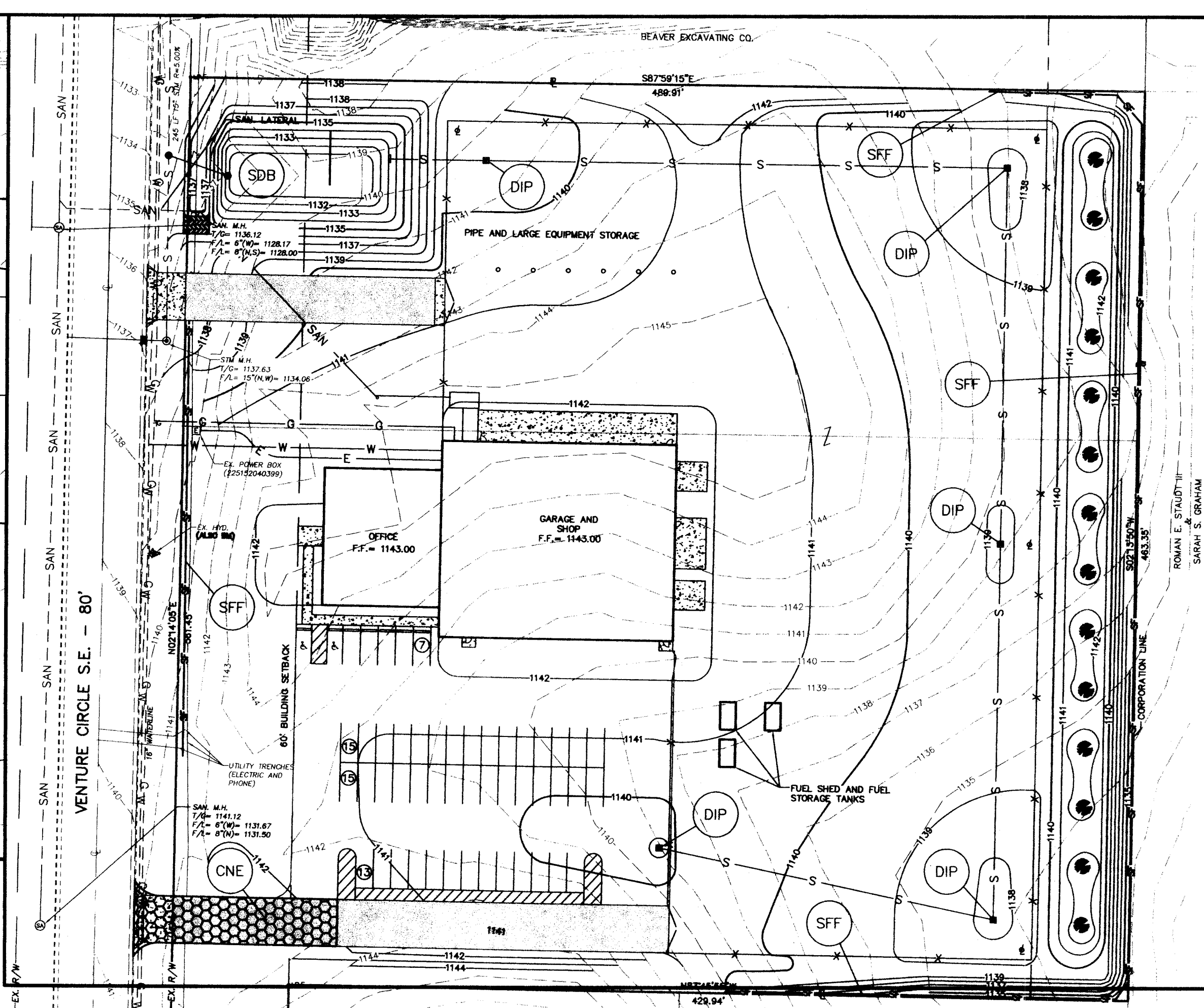
TEMPORARY SEDIMENT BASIN
SCALE 1" = 20'

SCHEDULE OF CONSTRUCTION ACTIVITY

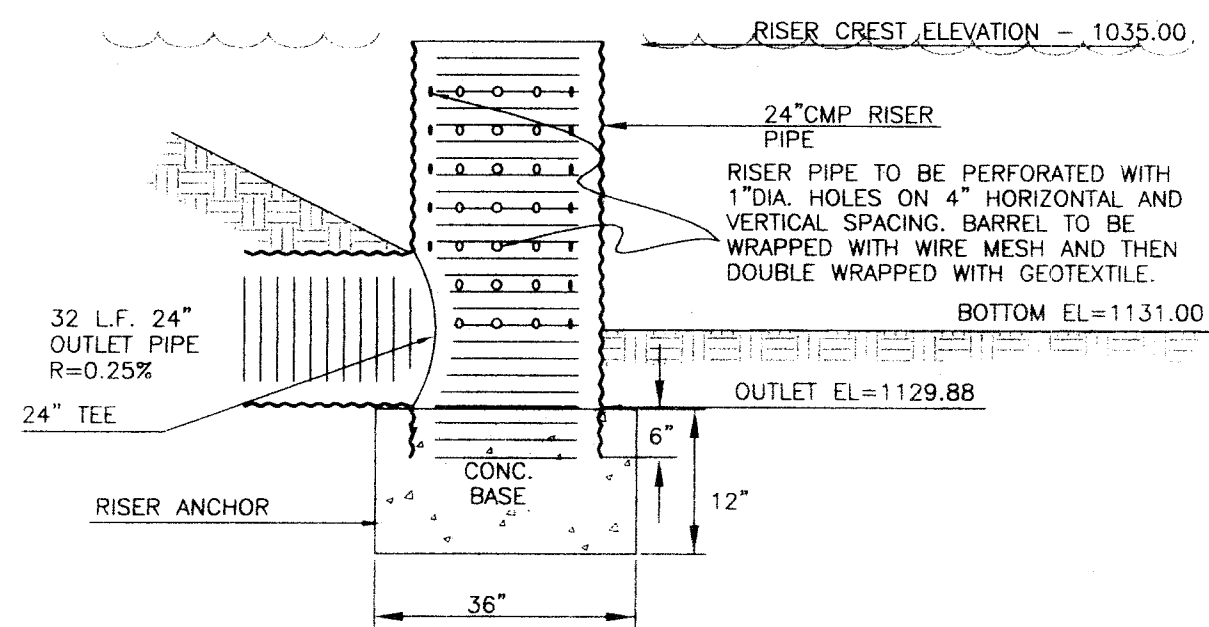
1. MARK LIMITS OF DISTURBANCE AND INSTALL PERIMETER CONTROLS. INSTALL CONSTRUCTION ENTRANCE AND PREPARE THE SUPPORT AREA.
2. CLEAR AND GRUB THE AREA FOR THE PROPOSED SEDIMENT BASIN.
3. CONSTRUCT THE PROPOSED SEDIMENT BASIN.
4. PROTECT SOIL STOCKPILES. CONSTRUCT SEDIMENT TRAPPING BMPs AND NECESSARY DIVERSIONS.
5. CONTINUE CLEARING AND GRADING.
6. APPLY EROSION CONTROL STABILIZATION TO GRADED AREAS TO REMAIN TEMPORARILY DORMANT.
7. INSTALL UTILITIES, STORM SEWER, CURB AND GUTTER.
8. APPLY AGGREGATE BASE TO ROADWAY.
9. COMPLETE GRADING AND INSTALL PERMANENT SEEDING AND PLANTINGS
10. COMPLETE FINAL PAVING.
11. ACQUIRE APPROVAL FROM STARK COUNTY SOIL AND WATER CONSERVATION DISTRICT TO REMOVE THE SEDIMENT BASIN.
12. REMOVE SWP3 RISER AND INSTALL WQ CONTROL STRUCTURE (STRUCTURE 'D2')
13. CONVERT TO THE SEDIMENT BASIN TO THE PERMANENT WATER QUALITY BASIN.

STORMWATER POLLUTION PREVENTION PLAN NOTES

1. THE CONTRACTOR SHALL PREVENT AND/OR REDUCE AND CONTROL SOIL EROSION RESULTING FROM THE PROPOSED IMPROVEMENTS. THE USE OF SILT FENCING, JUTE MATTING, TEMPORARY SEEDING, SILT CHECKS, INLET PROTECTION AROUND ALL CATCH BASINS, STABILIZED CONSTRUCTION ENTRANCE(S), ETC. WILL BE REQUIRED. SEDIMENT CONTROL STRUCTURES/DEVICES SHALL BE INSTALLED IN ACCORDANCE WITH THE LATEST EDITION OF THE MANUAL **RAINWATER AND LAND DEVELOPMENT - OHIO'S STANDARDS FOR STORMWATER MANAGEMENT, LAND DEVELOPMENT AND URBAN STREAM PROTECTION**. SEDIMENT CONTROL DEVICES MUST BE INSTALLED PRIOR TO BEGINNING ANY CONSTRUCTION ACTIVITY. THE CONTRACTOR SHALL BE RESPONSIBLE FOR CONTINUED INSPECTION AND MAINTENANCE OF ALL SEDIMENT CONTROL DEVICES. THE CONTRACTOR SHALL FOLLOW THE REQUIREMENTS SET FORTH ON THE APPROVED STORMWATER POLLUTION PREVENTION PLAN IF APPLICABLE, OR AS DETAILED ON THE CONSTRUCTION PLANS, AS SPECIFIED BY THE CITY OF MASSILLON.
2. THE IMPLEMENTATION OF EROSION AND SEDIMENT CONTROL MEASURES SHALL ALSO CONFORM TO THE REQUIREMENTS OF THE OHIO ENVIRONMENTAL PROTECTION AGENCY (OEPA) AND THE STARK SOIL AND WATER CONSERVATION DISTRICT. IF CONFLICTS EXIST REGARDING THE EROSION AND SEDIMENT CONTROL PRACTICES, THE MORE RESTRICTIVE SHALL APPLY.
3. TEMPORARILY STABILIZE DISTURBED AREAS THAT WILL REMAIN IDLE FOR 21 DAYS OR LONGER WITHIN 7 DAYS OF LAST DISTURBANCE OR WITHIN 2 DAYS FOR AREAS WITHIN 50 FEET OF A STREAM. PERMANENTLY STABILIZE DISTURBED AREAS WITHIN 7 DAYS OF REACHING FINAL GRADE. WHEN SEASONAL CONDITIONS PROHIBIT THE APPLICATION OF TEMPORARY OR PERMANENT SEEDING, THE AREA SHALL BE MULCHED IN ACCORDANCE WITH RWLD SPECIFICATIONS.
4. PERMANENT SEEDING SHALL BE IN ACCORDANCE WITH RWLD SPECIFICATIONS, PAGES 167-170.
5. TEMPORARY SEEDING SHALL BE IN ACCORDANCE WITH RWLD SPECIFICATIONS, PAGES 174-175.
6. MULCHING SHALL BE IN ACCORDANCE WITH THE RWLD SPECIFICATIONS, PAGE 160.
7. INSTALL ALL EROSION AND SEDIMENT CONTROL ITEMS BEFORE ANY CLEARING AND GRUBBING OR EARTHWORK IS BEGUN.
8. PROTECT UNDISTURBED AREAS THROUGHOUT CONSTRUCTION. DO NOT STORE EQUIPMENT, VEHICLES OR MATERIALS IN THESE PROTECTED AREAS. DO NOT DISTURB THESE AREAS.
9. OFF-SITE VEHICLE TRACKING OF SEDIMENTS SHALL BE MINIMIZED. ALL OFF-SITE TRACKING OF SEDIMENTS SHALL BE CLEANED UP AT THE END OF EACH WORK DAY.
10. OTHER EROSION AND SEDIMENT CONTROL ITEMS MAY BE NECESSARY DUE TO ENVIRONMENTAL CONDITIONS.
11. IMPLEMENT NON-SEDIMENT POLLUTION CONTROLS IN ACCORDANCE WITH THE SPECIFICATIONS PROVIDED ON PAGE 181 OF RWLD.
12. PROVIDE EROSION AND SEDIMENT CONTROL MEASURES FOR "SMALL LOT BUILDING SITES" IN ACCORDANCE WITH THE SPECIFICATIONS PROVIDED ON PAGE 183 OF RWLD.
13. A PRE-CONSTRUCTION MEETING IS REQUIRED WITH STARK SWCD (330-830-7700) PRIOR TO BEGINNING WORK.
14. EROSION AND SEDIMENT CONTROL MUST BE INSPECTED ONCE EVERY 7 DAYS AND FOLLOWING STORM EVENTS WITH 0.5 INCH OR GREATER RAINFALL DURING A 24 HOUR PERIOD. A WRITTEN LOG OF THESE INSPECTIONS MUST BE MAINTAINED THROUGHOUT CONSTRUCTION. THE LOG SHOULD INDICATE THE DATES OF INSPECTIONS, INSPECTOR, INSPECTION WEATHER CONDITIONS, OBSERVATIONS, ACTIONS TAKEN TO CORRECT PROBLEMS, AND THE DATE THE ACTION WAS TAKEN.
15. ANY NEEDED REPAIRS OF EROSION AND SEDIMENT CONTROL MEASURES, STRUCTURES, DEVICES OR RELATED ITEMS SHALL BE MADE WITHIN 3 DAYS.
16. SUBJECT PROPERTY IS LOCATED IN ZONE C (AREA OF MINIMAL FLOODING) PER FEMA MAP 390780 0100B.



SITE PLAN
SCALE 1" = 50'



RISER PIPE DETAIL - 100% DEWATERING DRAWDOWN
NOT TO SCALE

CONTACT INFORMATION
BILL HAWK INC.
2421 N. WOOSTER AVE.
DOVER, OHIO 44622
CONTACT: JENINE M. OTTOBRE - VP
PHONE: (330) 364-7771
FAX: (330) 343-3240

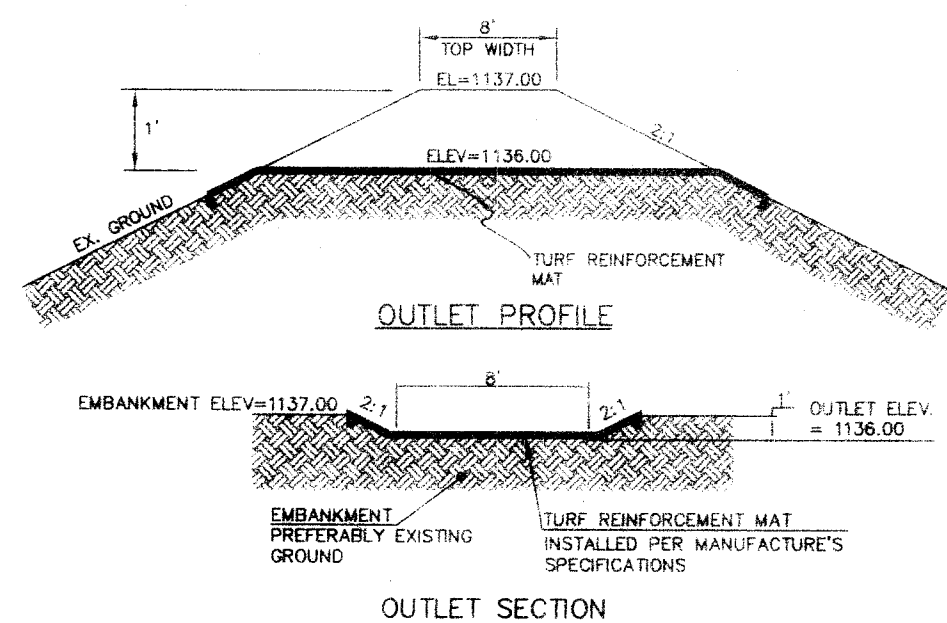
CO-PERMITTEE INFORMATION
NORMAN ECKINGER INC.
2500 KRISKO CIR. S.W.
CANTON, OHIO 44706
CONTACT: NORMAN ECKINGER
PHONE: (330) 452-6500
FAX: (330) 452-6530

PROJECT DESCRIPTION
ACTIVITIES DISTURBING THIS SITE WILL CONSIST OF CONSTRUCTION OF BUILDING, PARKING LOT, AND STORM SEWERS. THE SITE IS AT 5.34AC. AT WHICH 4.39AC. WILL BE DISTURBED. ALL SEDIMENT LADEN WATER WILL BE DIRECTED TO A SEDIMENT BASIN LOCATED IN THE NORTHWEST CORNER OF THE SITE.

SOILS INFORMATION
Stark County Soil Survey Map # 58

LEGEND

- SDB SEDIMENT BASIN AS PER THIS SHEET
- SF SILT FENCE AS PER PGS. 120-121 OF RWLD
- DIP INLET PROTECTION IN SWALES, DITCH LINES OR YARD INLETS AS PER PG. 125 OF RWLD
- CNE CONSTRUCTION ENTRANCE AS PER PG. 158 OF RWLD
- MAT MATTING AS PER PG. 163-164 OF RWLD



SEDIMENT BASIN - EMERGENCY SPILLWAY

AS NOTED

REVISIONS

NO.	DATE	BY	DESCRIPTION
1			
2			
3			
4			

BRYAN J. ASHMAN
JEROME E. GEIB

COOPER & ASSOCIATES, LLP
ENGINEERS AND SURVEYORS

1359 MARKET AVENUE NORTH
CANTON, OHIO 44705
PHONE: (330) 452-7777
FAX: (330) 452-7777

STORM WATER POLLUTION PREVENTION PLAN

NEW CORPORATE FACILITY

SITUATED IN OUTLOT 1048, LOCATED IN THE CITY OF MASSILLON, STARK COUNTY, OHIO

FOR: BILL HAWK INC.

DRAWN BY: M.J.S.

CHECKED BY: B.J.A.

DATE: 4/27/2007

SHEET 4 OF 4

PROJ.#07151A