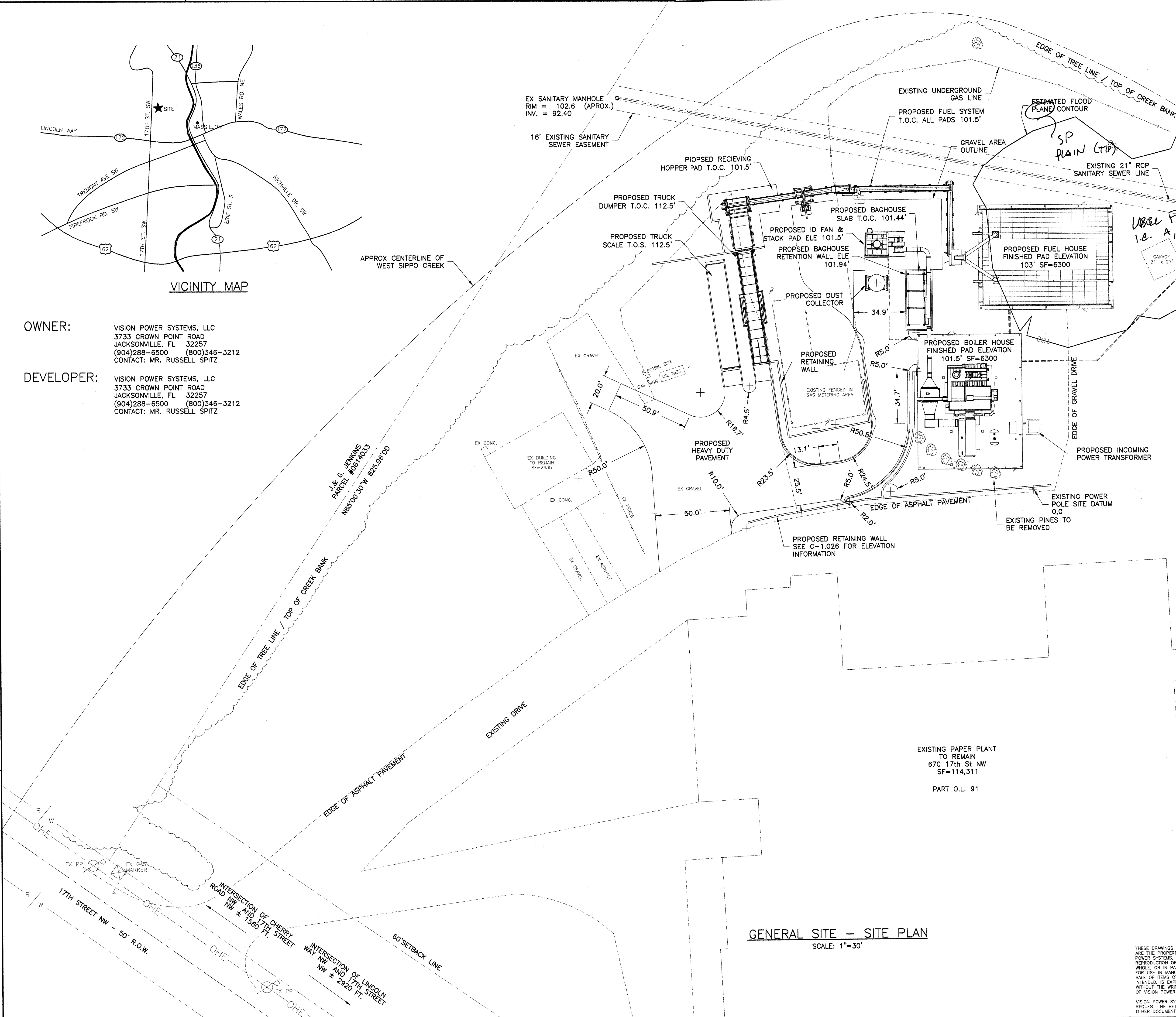


VICINITY MAP

OWNER:
VISION POWER SYSTEMS, LLC
3733 CROWN POINT ROAD
JACKSONVILLE, FL 32257
(904)288-6500 (800)346-3212
CONTACT: MR. RUSSELL SPITZ

DEVELOPER:
VISION POWER SYSTEMS, LLC
3733 CROWN POINT ROAD
JACKSONVILLE, FL 32257
(904)288-6500 (800)346-3212
CONTACT: MR. RUSSELL SPITZ



GENERAL SITE - SITE PLAN
SCALE: 1"=30'

REVISIONS				
REV	ZONE	DESCRIPTION	DATE	APPROVED
E		RELOCATED FUEL HOUSE, ADDED MATERIAL HANDLING SYSTEM, ADDED NOTES ABOUT FUTURE CHANGES	28SEP07	
F		RESIZED SITE PLAN TO INCLUDE SEPARATE FUEL TRUCK ACCESS ROAD, REVISED MATERIAL HANDLING SYSTEM, RESUBMITTED FOR CUSTOMER APPROVAL.	12OCT07	
G		P.E. SEAL SUBMITTAL	02JAN08	
H		REVISED TO SHOW SEWER EASEMENT LOCATION	09JAN08	
I		MAJOR REVISION, ROTATED FUEL HOUSE 90 DEGREES TO RELIEVE IMPACT ON EXISTING CITY SEWER MAIN, RELOCATE MATERIAL HANDLING SYSTEM TO COMPLY WITH ROTATION OF FUEL HOUSE - RESUBMITTED TO CIVIL FOR REVISION OF SITE GRADING.	12JAN08	
J		REVISED PER CITY COMMENT	25FEB08	

EX SANITARY MANHOLE
RIM = 100.4 (APPROX.)
INV. = 91.10

* SEE ATTACHED FOR
CORRECT FLOOD PLAN
BOUNDARY.

LOT: LOCATED IN THE CITY OF MASSILLON, COUNTY OF STARK, STATE OF OHIO BEING ALL OF MASSILLON CITY LOT 9809, AND ALL OF OUT LOTS 92, 103, & 105, AND PART OF OUT LOTS 27, 91, & 106.

OWNER: FIBERCORR MILLS, 670 17th ST NW, MASSILLON, OHIO

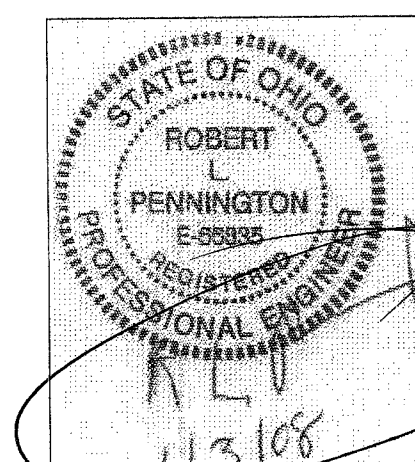
ZONING: ZONING DISTRICT - I-1, LIGHT INDUSTRIAL
FRONT SETBACK 60'
SIDE SET BACK 0'
REAR SET BACK 0'

ACRES: 28.281 TOTAL

APPROVED BY THE MASSILLON CITY ENGINEER
THIS ____ DAY OF 20____

KEITH A. DYLEWSKI, PE.

ONLY APPROVED SIGNED
PLANS BY THE CITY ENGINEER
ARE TO BE USED FOR
CONSTRUCTION



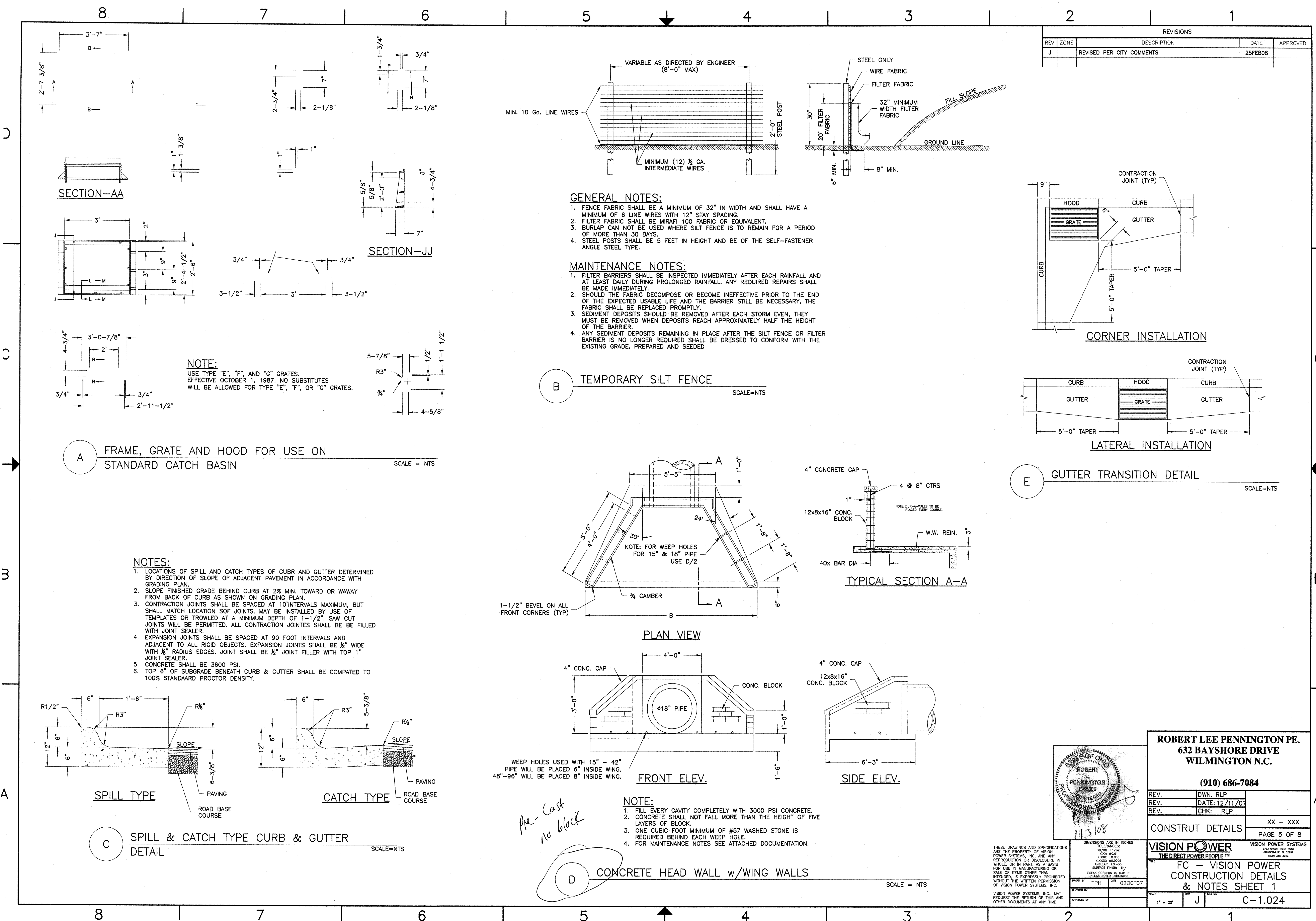
ROBERT LEE PENNINGTON PE.
632 BAYSHORE DRIVE
WILMINGTON N.C.

(910) 686-7084

REV.	DWN: RLP	
REV.	DATE: 12/11/07	
REV.	CHK: RLP	
SITE PLAN/EXISTING CONDITIONS		XX - XXX
		PAGE 1 OF 8

VISION POWER
THE DIRECT POWER PEOPLE™
3733 CROWN POINT ROAD
JACKSONVILLE, FL 32257
(904) 288-6500

FC - VISION POWER
GENERAL SITE
AND VICINITY MAP
SCALE: 1" = 30'
JOB NO: J
Dwg NO: C-1.020



REVISIONS				
REV	ZONE	DESCRIPTION	DATE	APPROVED
J		REVISED PER CITY COMMENTS	25FEB08	

GENERAL NOTES:

- FENCE FABRIC SHALL BE A MINIMUM OF 32" IN WIDTH AND SHALL HAVE A MINIMUM OF 6 LINE WIRES WITH 12" STAY SPACING.
- FILTER FABRIC SHALL BE MIRAFI 100 FABRIC OR EQUIVALENT.
- BURLAP CAN NOT BE USED WHERE SILT FENCE IS TO REMAIN FOR A PERIOD OF MORE THAN 30 DAYS.
- STEEL POSTS SHALL BE 5 FEET IN HEIGHT AND BE OF THE SELF-FASTENER ANGLE STEEL TYPE.

MAINTENANCE NOTES:

- FILTER BARRIERS SHALL BE INSPECTED IMMEDIATELY AFTER EACH RAINFALL AND AT LEAST DAILY DURING PROLONGED RAINFALL. ANY REQUIRED REPAIRS SHALL BE MADE IMMEDIATELY.
- SHOULD THE FABRIC DECOMPOSE OR BECOME INEFFECTIVE PRIOR TO THE END OF THE EXPECTED USABLE LIFE AND THE BARRIER STILL BE NECESSARY, THE FABRIC SHALL BE REPLACED PROMPTLY.
- SEDIMENT DEPOSITS SHOULD BE REMOVED AFTER EACH STORM EVEN, THEY MUST BE REMOVED WHEN DEPOSITS REACH APPROXIMATELY HALF THE HEIGHT OF THE BARRIER.
- ANY SEDIMENT DEPOSITS REMAINING IN PLACE AFTER THE SILT FENCE OR FILTER BARRIER IS NO LONGER REQUIRED SHALL BE DRESSED TO CONFORM WITH THE EXISTING GRADE, PREPARED AND SEEDED

NOTES:

- LOCATIONS OF SPILL AND CATCH TYPES OF CURB AND GUTTER DETERMINED BY DIRECTION OF SLOPE OF ADJACENT PAVEMENT IN ACCORDANCE WITH GRADING PLAN.
- SLOPE FINISHED GRADE BEHIND CURB AT 2% MIN. TOWARD OR AWAY FROM BACK OF CURB AS SHOWN ON GRADING PLAN.
- CONTRACTION JOINTS SHALL BE SPACED AT 10' INTERVALS MAXIMUM, BUT SHALL MATCH LOCATION SOF JOINTS. MAY BE INSTALLED BY USE OF TEMPLATES OR TROWLED AT A MINIMUM DEPTH OF 1'-1/2". SAW CUT JOINTS WILL BE PERMITTED. ALL CONTRACTION JOINTS SHALL BE FILLED WITH JOINT SEALER.
- EXPANSION JOINTS SHALL BE SPACED AT 90 FOOT INTERVALS AND ADJACENT TO ALL RIGID OBJECTS. EXPANSION JOINTS SHALL BE 1/2" WIDE WITH 1/8" RADIUS EDGES. JOINT SHALL BE 1/2" JOINT FILLER WITH TOP 1" JOINT SEALER.
- CONCRETE SHALL BE 3600 PSI.
- TOP 6" OF SUBGRADE BENEATH CURB & GUTTER SHALL BE COMPACTED TO 100% STANDARD PROCTOR DENSITY.

PLAN VIEW

FRONT ELEV.

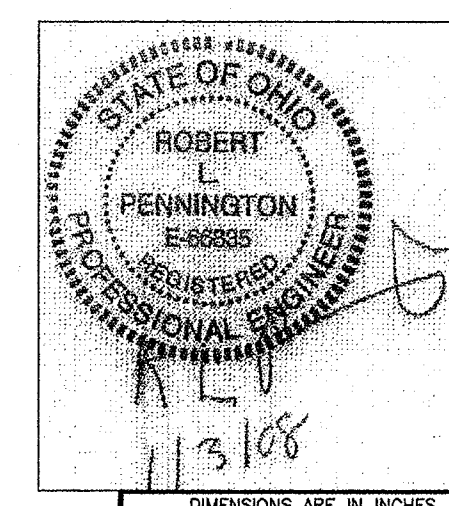
TYPICAL SECTION A-A

SIDE ELEV.

CONCRETE HEAD WALL w/WING WALLS

NOTE:

- FILL EVERY CAVITY COMPLETELY WITH 3000 PSI CONCRETE.
- CONCRETE SHALL NOT FALL MORE THAN THE HEIGHT OF FIVE LAYERS OF BLOCK.
- ONE CUBIC FOOT MINIMUM OF #57 WASHED STONE IS REQUIRED BEHIND EACH WEEP HOLE.
- FOR MAINTENANCE NOTES SEE ATTACHED DOCUMENTATION.



ROBERT LEE PENNINGTON PE.
632 BAYSHORE DRIVE
WILMINGTON N.C.

(910) 686-7084

REV.	DWN. RLP	
REV.	DATE: 12/11/07	
REV.	CHK: RLP	

CONSTRUCT DETAILS
XX - XXX
PAGE 5 OF 8

VISION POWER
THE DIRECT POWER PEOPLE™
VISION POWER SYSTEMS
1310 DOWEN POINT ROAD
JACKSONVILLE, FL 32257
(904) 364-1012

FC - VISION POWER
CONSTRUCTION DETAILS
& NOTES SHEET 1

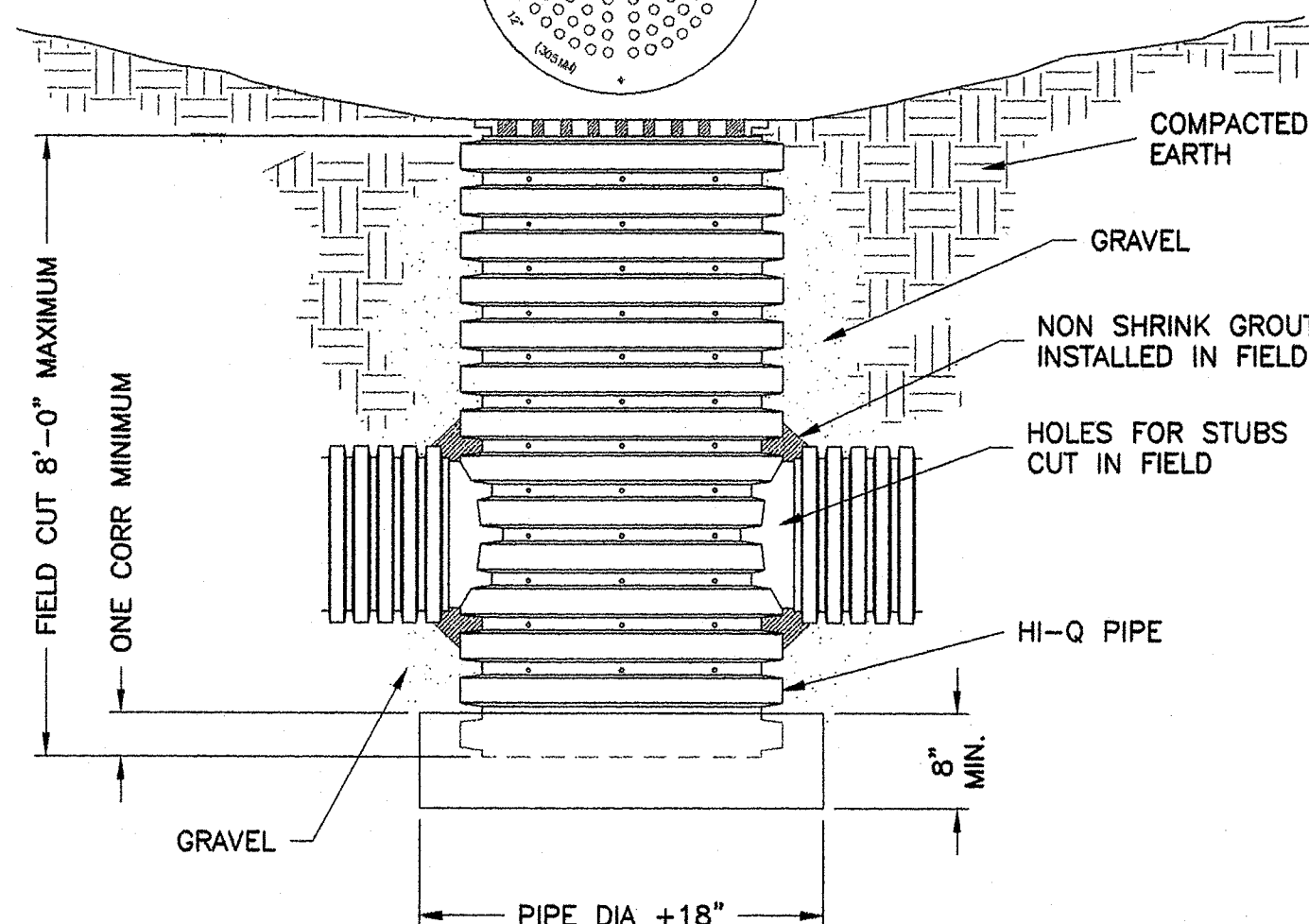
SCALE: 1" = 20'
REV J
C-1.024

THESE DRAWINGS AND SPECIFICATIONS ARE THE PROPERTY OF VISION POWER SYSTEMS, INC. AND ANY REPRODUCTION OR DISCLOSURE IN WHOLE, OR IN PART, AS A BASIS FOR USE IN MANUFACTURING OR SALE OF ITEMS OTHER THAN INTENDED, IS EXPRESSLY PROHIBITED WITHOUT THE WRITTEN PERMISSION OF VISION POWER SYSTEMS, INC.

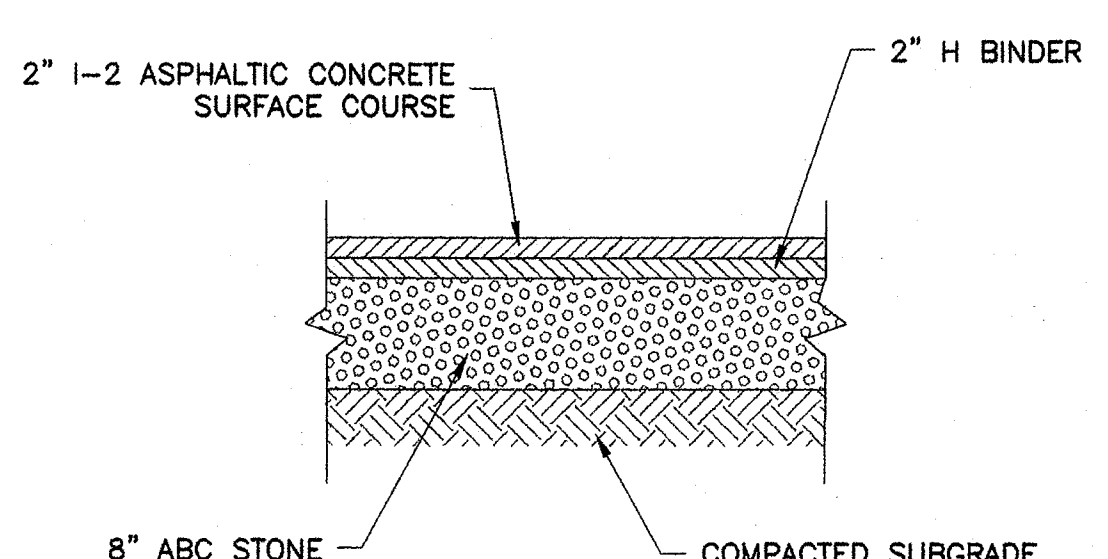
VISION POWER SYSTEMS, INC. MAY REQUEST THE RETURN OF THIS AND OTHER DOCUMENTS AT ANY TIME.

DATE: 02/02/07
DRAWN BY: TPH
CHECKED BY: J

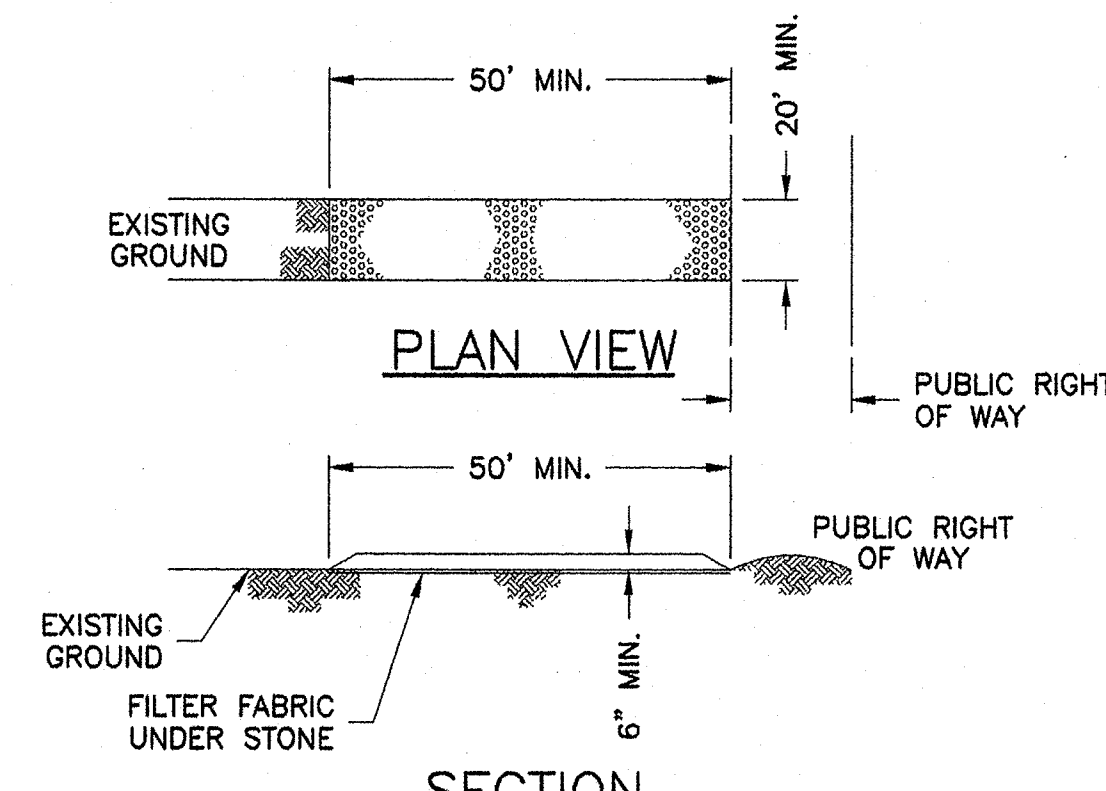
HANCOR 12" POLYETHYLENE DRAIN GRATE OR NEENAH FOUNDRY FRAME AND GRATE R-5901 OR EAST JORDAN IRON WORKS FRAME AND GRATE #6220 SERIES



F YARD INLET DETAIL SCALE=NTS

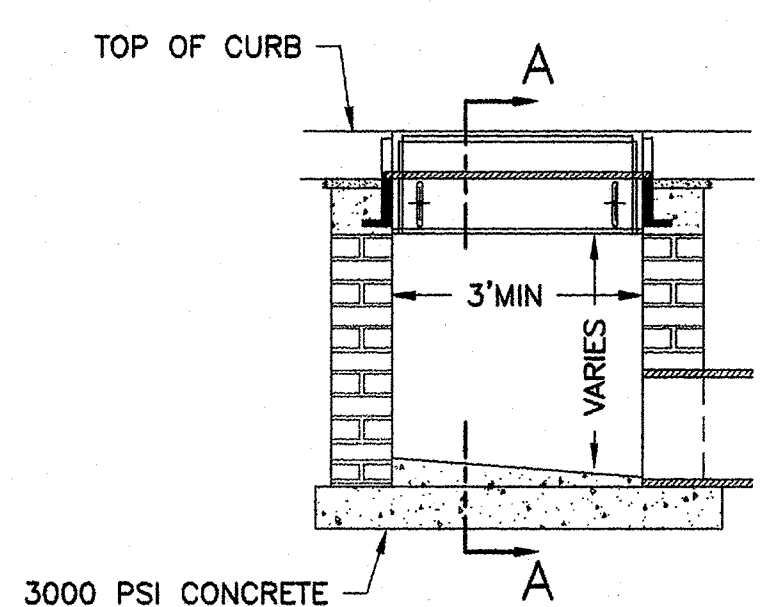


I HEAVY DUTY PAVEMENT DETAIL SCALE=NTS

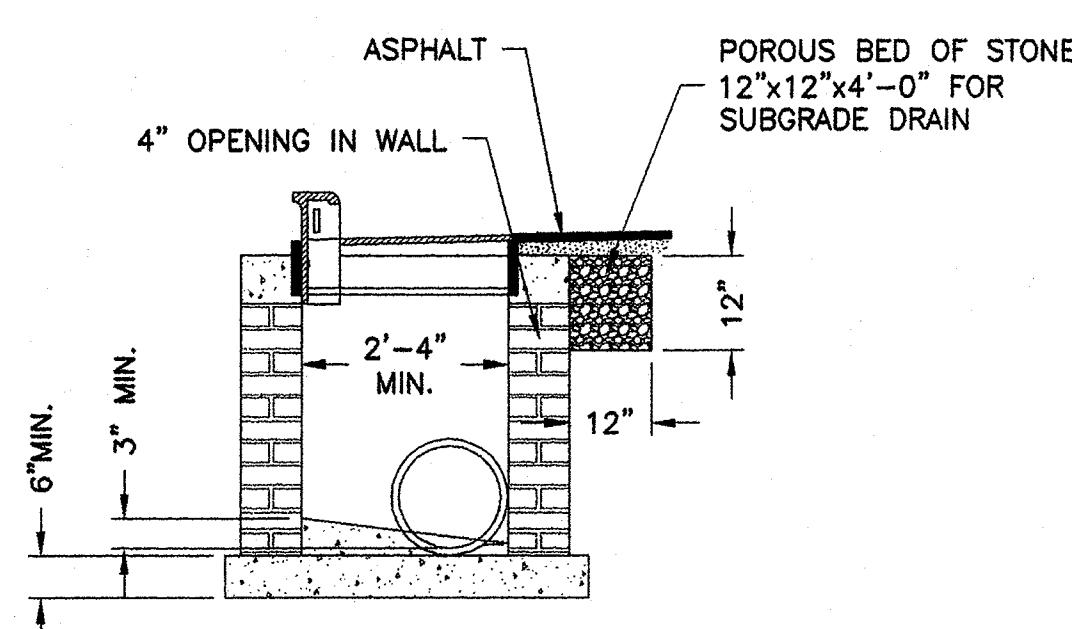


- CONSTRUCTION SPECIFICATIONS:**
1. PROVIDE APPROPRIATE TRANSITION BETWEEN STABILIZED CONSTRUCTION ENTRANCE AND PUBLIC RIGHT OF WAY.
 2. STONE SIZE-USE 2"-3" WASHED STONE.
 3. LENGTH-AS EFFECTIVE BUT NOT LESS THAN 50 FEET.
 4. THICKNESS-NOT LESS THAN 6 INCHES.
 5. WIDTH-NOT LESS THAN 20 FEET WIDE.
 6. WASHING-WHEN NECESSARY, WHEELS SHALL BE CLEANED TO REMOVE SEDIMENT PRIOR TO ENTRANCE ONTO PUBLIC RIGHT OF WAY. WHEN WASHING IS REQUIRED, IT SHALL BE DONE ON AN AREA STABILIZED WITH CRUSHED STONE WHICH DRAINS INTO AN APPROVED SEDIMENT TRAP OR SEDIMENT BASIN. ALL SEDIMENT SHALL BE PREVENTED FROM ENTERING ANY STORM DRAIN, DITCH, OR WATERCOURSE THROUGH USE OF SAND BAGS, GRAVEL, BOARDS, OR OTHER APPROVED METHODS.
 7. MAINTENANCE-THE ENTRANCE SHALL BE MAINTAINED IN A CONDITION WHICH WILL PREVENT TRACKING OR FLOWING OF SEDIMENT ONTO PUBLIC RIGHTS OF WAY. THIS MAY REQUIRE PERIODIC TOP DRESSING WITH ADDITIONAL STONE AS CONDITIONS DEMAND AND REPAIR AND OR CLEANOUT OF ANY MEASURES USED TO TRAP SEDIMENT. ALL SEDIMENT SPILLED, DROPPED, WASHED, OR TRACKED ONTO PUBLIC RIGHTS OF WAY MUST BE REMOVED IMMEDIATELY.
 8. FILTER FABRIC SHALL BE MIRAFI 500 OR EQUAL.

L TEMPORARY CONSTRUCTION ENTRANCE SCALE=NTS



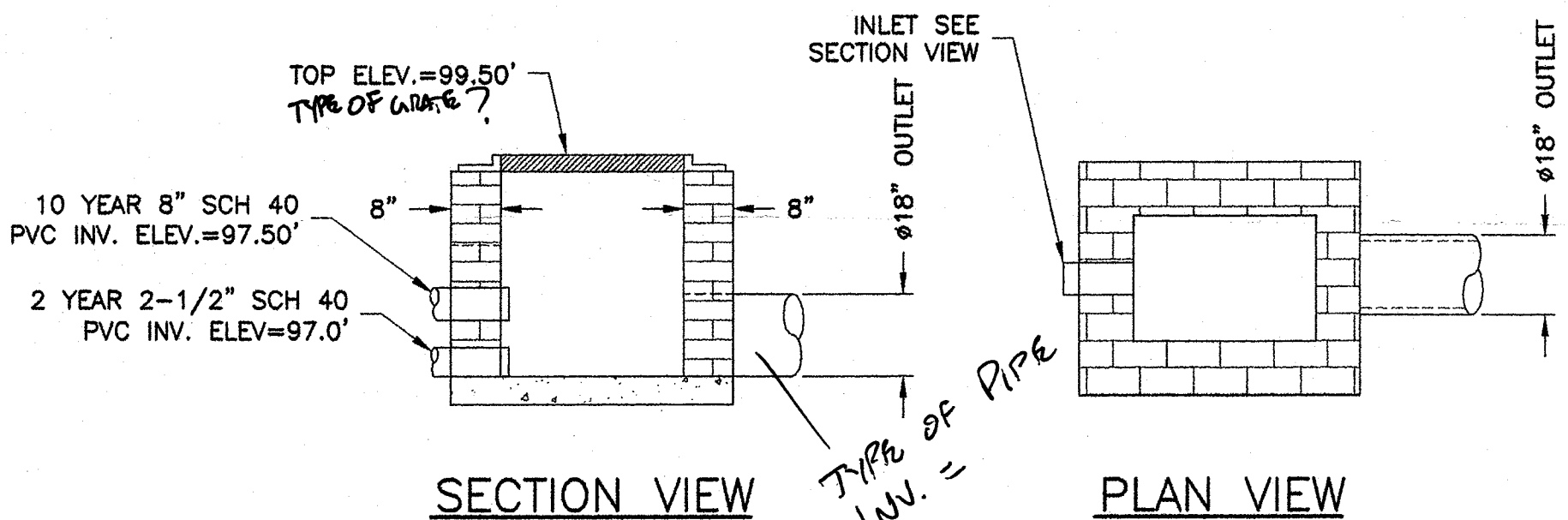
FRONT VIEW SECTION



SECTION A-A

- NOTE:**
1. 24" RCP AND UP USE PIPE DIA. PLUS 10"
 2. EITHER BRICK MASONRY OF CLASS "A" CONCRETE MAY BE USED TO CONSTRUCT CATCH BASINS.
 3. CONCRETE WALLS ARE TO BE 6" THICK AND THE FLOOR 6" OF 3000 PSI CONCRETE.
 4. BRICK WALLS ARE TO BE 8" THICK AND FLOOR 6" OF 3000 PSI CONCRETE. STEPS REQUIRED WHERE DEPTH EXCEEDS 4'-0".

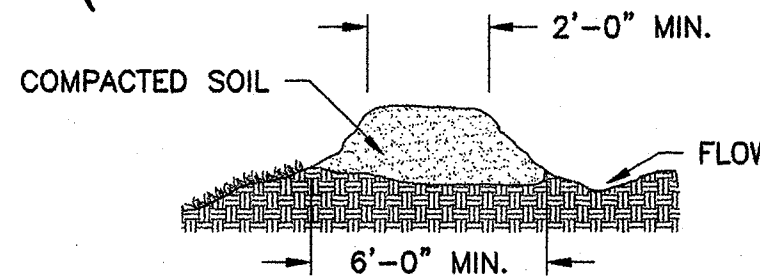
G CATCH BASIN DETAIL SCALE=NTS



SECTION VIEW

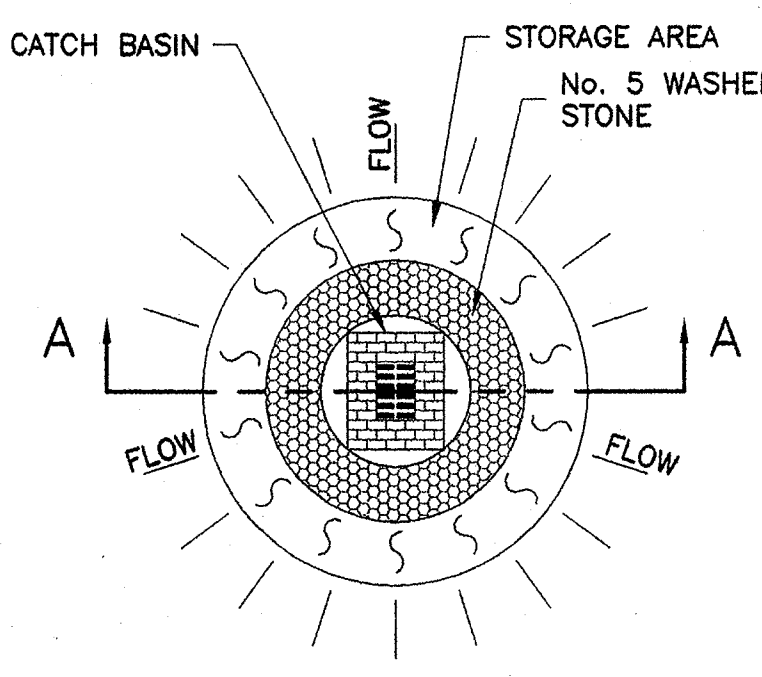
PLAN VIEW

J POND OUTLET STRUCTURE SCALE=NTS

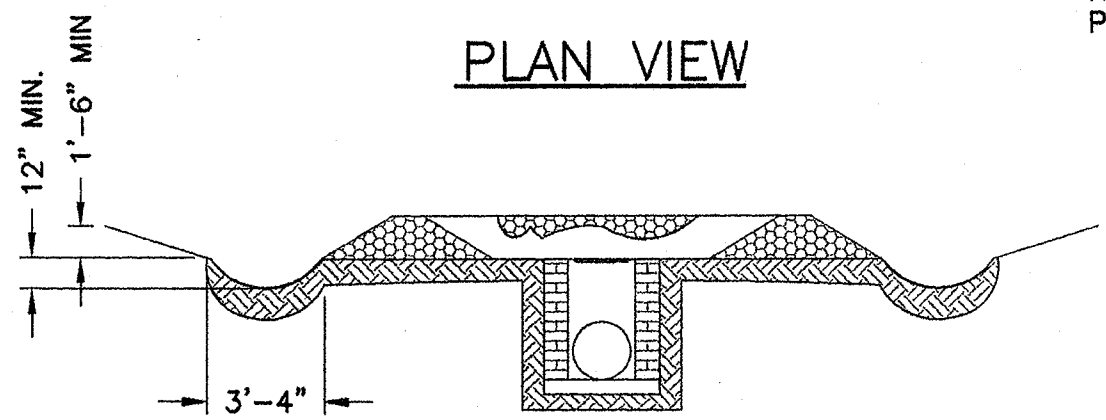


M TEMPORARY DIVERSION DITCH SCALE=NTS

REVISIONS				
REV	ZONE	DESCRIPTION	DATE	APPROVED
J		REVISED PER CITY COMMENTS	25FEB08	

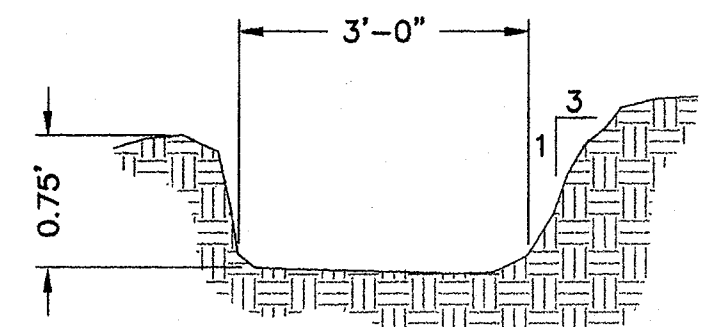


PLAN VIEW



SECTION A-A

H STORM INLET SEDIMENT SCALE=NTS STD # 30.08



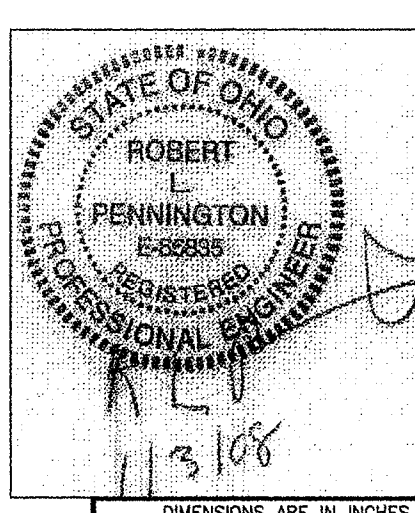
K PERMANENT DITCH SECTION SCALE=NTS

CONSTRUCTION SPECIFICATIONS:

1. REMOVE AND PROPERLY DISPOSE OF ALL TREES, BRUSH, STUMPS, AND OTHER OBJECTIONABLE MATERIAL.
2. ENSURE THAT THE MINIMUM CONSTRUCTED CROSS SECTION MEETS ALL DESIGN REQUIREMENTS.
3. ENSURE THAT THE TOP OF THE DIKE IS NOT LOWER AT ANY POINT THAN THE DESIGN ELEVATION PLUS THE SPECIFIED SETTLEMENT.
4. PROVIDE SUFFICIENT ROOM AROUND DIVERSIONS TO PERMIT MACHINE REGRADING AND CLEAN OUT.
5. VEGETATE THE RIDGE IMMEDIATELY AFTER CONSTRUCTION, UNLESS IT WILL REMAIN IN PLACE LESS THAN 30 WORKING DAYS.
6. SHAPE: PARABOLIC, TRAPEZOIDAL, OR V-SHAPED. SIDE SLOPE: 2:1 OR FLATTER, 3:1 OR FLATTER WHERE VEHICLES CROSS.

MAINTENANCE:

INSPECT TEMPORARY DIVERSIONS ONCE A WEEK AND AFTER EVERY RAINFALL. IMMEDIATELY REMOVE SEDIMENT FROM FLOW AREA AND REPAIR THE DIVERSION RIDGE. CAREFULLY CHECK OUTLETS AND MAKE TIMELY REPAIRS AS NEEDED. WHEN THE AREA PROTECTED IS PERMANENTLY STABILIZED REMOVE THE RIDGE AND THE CHANNEL TO BLEND WITH THE NATURAL GROUND LEVEL AND APPROPRIATELY STABILIZE IT.



ROBERT LEE PENNINGTON PE.
632 BAYSHORE DRIVE
WILMINGTON N.C.
(910) 686-7084

REV.	DWN. RLP
REV.	DATE: 12/11/07
REV.	CHK: RLP

CONSTRUCT DETAILS XX - XXX
PAGE 6 OF 8

VISION POWER
THE DIRECT POWER PEOPLE™
FC - VISION POWER
CONSTRUCTION DETAILS
& NOTES SHEET 2

VISION POWER SYSTEMS
3333 CROWN POINT ROAD
ROCKFORD, IL 61227
(800) 246-2072

SCALE: NONE
REV: J
C-1.025

THESE DRAWINGS AND SPECIFICATIONS ARE THE PROPERTY OF VISION POWER SYSTEMS, INC. AND ANY REPRODUCTION OR DISCLOSURE IN WHOLE OR IN PART, AS A BASIS FOR USE IN MANUFACTURING OR SALE OF ITEMS OTHER THAN INTENDED, IS EXPRESSLY PROHIBITED WITHOUT THE WRITTEN PERMISSION OF VISION POWER SYSTEMS, INC.

VISION POWER SYSTEMS, INC. MAY REQUEST THE RETURN OF THIS AND OTHER DOCUMENTS AT ANY TIME.

DIMENSIONS ARE IN INCHES
TOLERANCES:
XX/YY: ±1/32
XXX: ±0.01
XXXX: ±0.005
ANGULAR: ±0°-30'
SURFACE FINISH: 63/
BREAK: CHAMFER TO 0.01 R
UNLESS NOTED OTHERWISE

DRAWN BY: TPH
DATE: 02OCT07
CHECKED BY:
APPROVED BY: