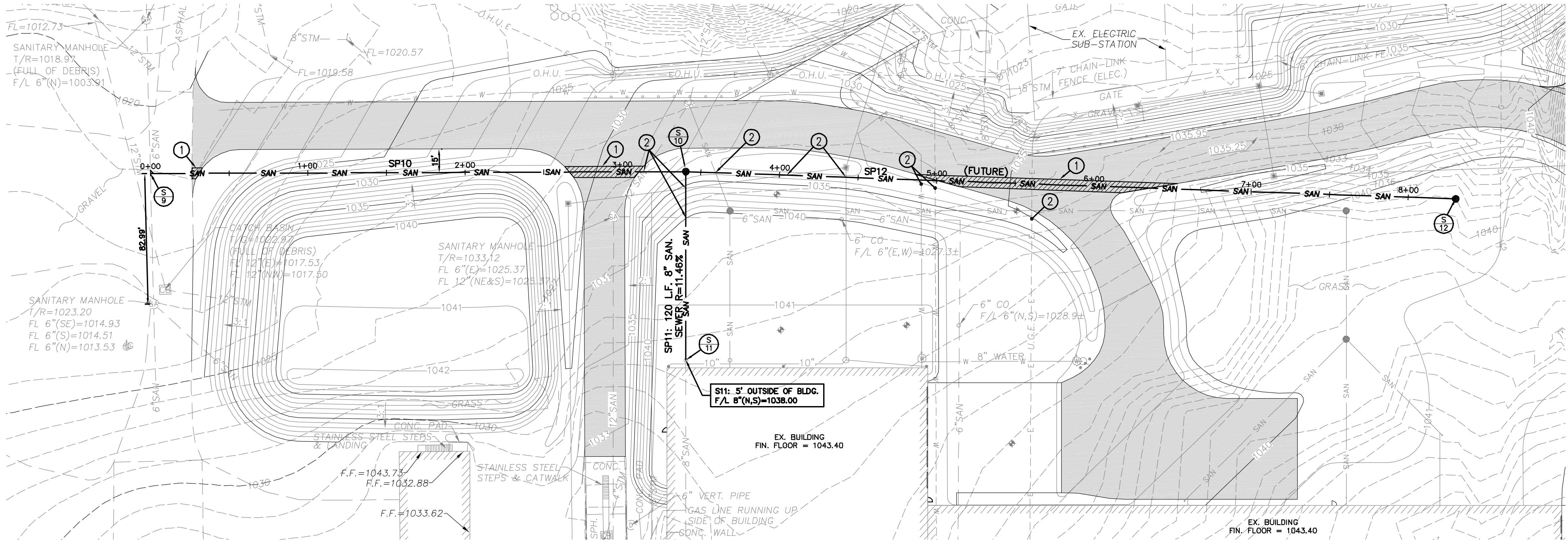


LEGEND

○	IRON BAR/PIPE FOUND (AS NOTED)
⊕	SANITARY SEWER MANHOLE
⊕	STORM SEWER MANHOLE
□	CATCH BASIN
⊕	HYDRANT
⊕	WATER VALVE
○	GAS LINE TEST WIRE
⊕	AIR CONDITIONER
⊕	DECIDUOUS TREE
⊕	CONIFEROUS TREE
⊕	TELEPHONE POLE
⊕	POWER POLE
○	OVERHEAD UTILITIES
+	GUY WIRE ANCHOR
⊕	UNDERGROUND TELEPHONE PEDESTAL
⊕	UNDERGROUND ELECTRIC PEDESTAL
+	SIGN (AS NOTED)
⊕	SANITARY CLEAN-OUT
⊕	DOWN SPOUT
*	POST/BOLLARD

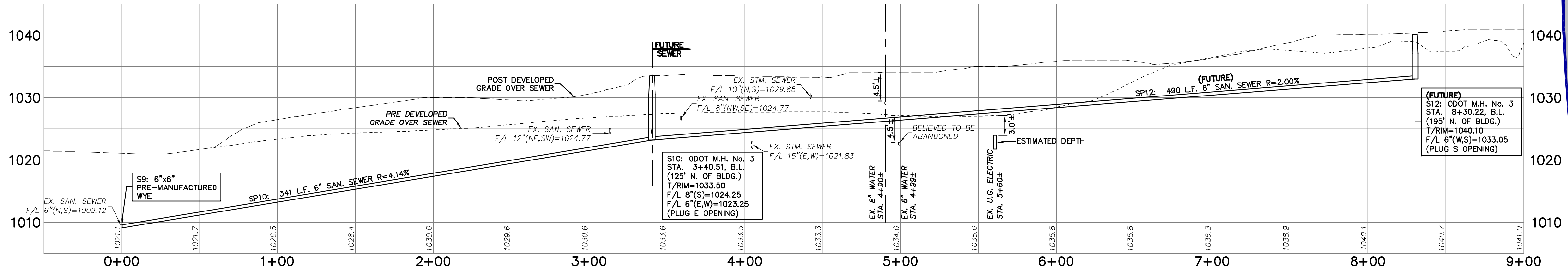
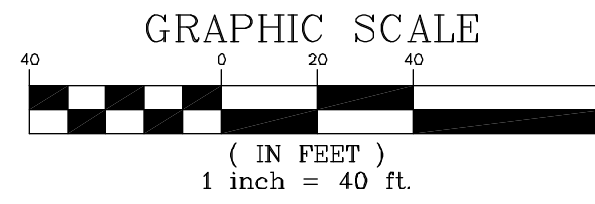
BENCHMARK 'C':
TOP OPERATING NUT OF
HYDRANT LOCATED APPROX.
130' S.E. OF THE EX. S.E.
BUILDING CORNER
ELEV. = 1051.58

2 WORKING DAYS
BEFORE YOU DIG
CALL TOLL FREE 800-362-2764
OHIO UTILITIES PROTECTION SERVICE



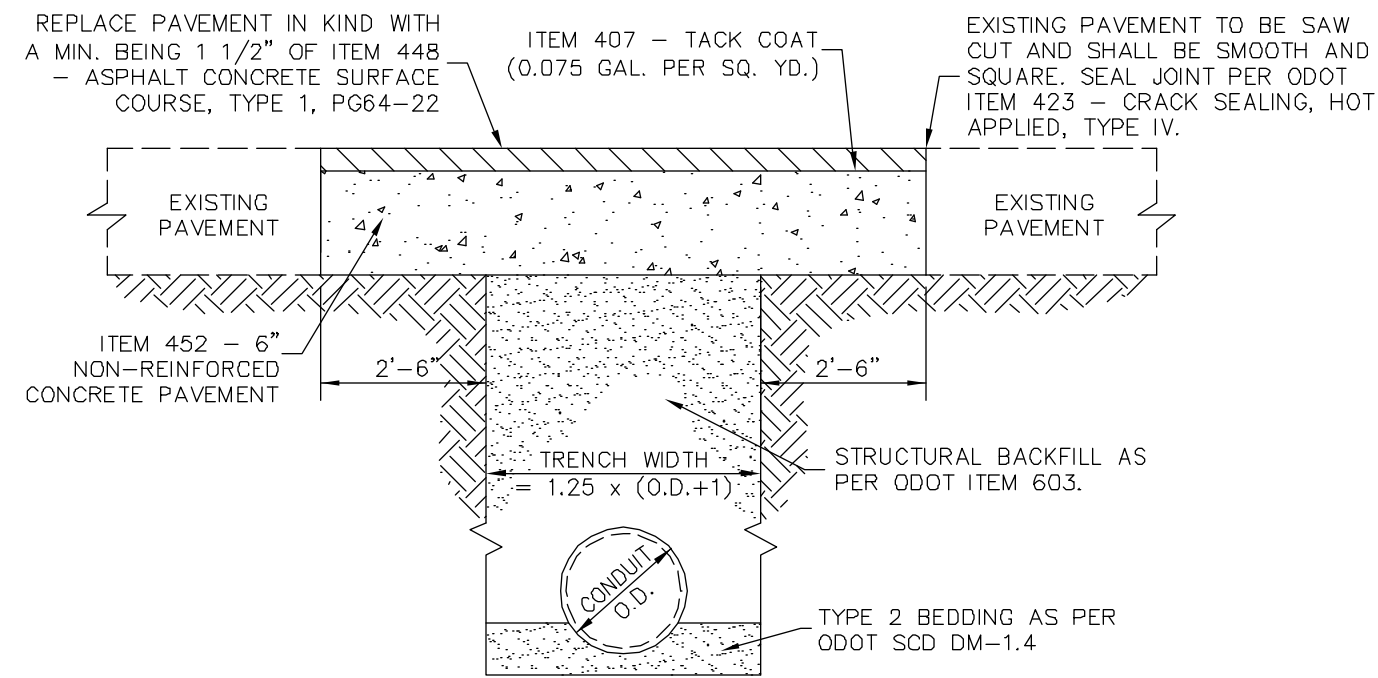
SANITARY SEWER EXTENSION - PLAN VIEW

SCALE: HORIZ: 1" = 40'
VERT: 1" = 10'



SANITARY SEWER NOTES:

- ALL SANITARY SEWER AND APPURTENANCES SHALL BE CONSTRUCTED ACCORDING TO MASSILLON CITY ENGINEERING DEPARTMENT SPECIFICATIONS IN EFFECT AT THE TIME OF CONSTRUCTION.
- ROOF DRAINS, FOUNDATION DRAINS, AND OTHER CLEAN WATER CONNECTIONS TO THE SANITARY SEWER ARE PROHIBITED.
- MINIMUM COVER OVER ALL SANITARY SEWERS MUST BE 4.0 FEET.
- ALL SANITARY SEWERS 8" DIAMETER AND LARGER, MUST PASS INTERNAL TELEVISION INSPECTION. THE CONTRACTOR SHALL PROVIDE COMPLETE INTERNAL INSPECTION VIDEO TAPE TO THE SANITARY ENGINEERING DEPARTMENT. THE VIDEO TAPING PROCEDURE MUST BE IN ACCORDANCE WITH CITY OF MASSILLON SANITARY ENGINEERING DEPARTMENT SPECIFICATIONS.
- PRIOR OR THE START OF CONSTRUCTION, THE CONTRACTOR SHALL CONTACT THE CITY OF MASSILLON ENGINEERING DEPT., (330-830-1722) TO SCHEDULE A PRE-CONSTRUCTION MEETING. A MINIMUM OF 3 DAYS NOTICE IS REQUIRED TO SCHEDULE THIS MEETING.
- SANITARY SEWER MAY BE ANY OF THE FOLLOWING MATERIALS, HOWEVER THE COMPLETE SYSTEM MUST BE UNIFORM IN PIPE MATERIAL:
A. V.C.P. EXTRA STRENGTH A.S.T.M. C-700 WITH COMPRESSION TYPE JOINTS IN CONFORMANCE WITH A.S.T.M. C-425.
B. A.B.S. COMPOSITE PIPE A.S.T.M. D-2680 WITH CHEMICALLY WELDED PREMIUM JOINTS IN CONFORMANCE WITH A.S.T.M. D-2235, BEDDING PER A.S.T.M. D-2680.
C. P.V.C. PIPE A.S.T.M. D-3034, S.D.R. 35 MAXIMUM WITH GASKETED PREMIUM JOINTS A.S.T.M. D-3212. BEDDING PER A.S.T.M.-2321.
- THE CONTRACTOR SHALL CORE DRILL THE EXISTING SANITARY MANHOLE (S1) AT THE LOCATION DESIGNATED ON THESE PLANS, INSTALL A FLEXIBLE BUTYLENE RESIN CONNECTOR THAT CONFORMS TO ASTM C923, SEAL THE CONNECTION WITH A NON-SHRINK MORTAR, CONSTRUCT A FORMED INVERT TO PROMOTE FLOW TO THE NORTH THROUGH THE MANHOLE AND INSTALL A BULKHEAD ON THE PROPOSED SEWER UNTIL SUCH TIME THE PROPOSED SANITARY SEWER HAS BEEN TESTED AND APPROVED BY THE MASSILLON CITY ENGINEER, AT WHICH TIME THE BULKHEAD SHALL BE REMOVED. ALL ITEMS DESCRIBED ABOVE SHALL BE COVERED IN THE CONTRACTORS BID PRICE TO CONNECT INTO THE EXISTING SEWER.
- MANHOLE AND TRENCHES SHALL BE PER MASSILLON DETAILS DRAWINGS.
- CONTRACTOR MUST CONSTRUCT ALL WATER LINES AS NECESSARY TO MAINTAIN A MINIMUM OF 18" VERTICAL CLEARANCE AND 10' HORIZONTAL CLEARANCE WITH THE SANITARY SEWER AND A MINIMUM OF 12" VERTICAL CLEARANCE WITH THE STORM SEWER.
- A DEFLECTION TEST SHALL BE REQUIRED FOR ALL FLEXIBLE PIPE OF 8-INCH DIAMETER AND LARGER. THE TEST SHALL BE CONDUCTED AT LEAST 30 DAYS AFTER COMPLETION OF BACKFILL AND SHALL BE IN ACCORDANCE WITH THE CITY OF MASSILLON SANITARY ENGINEERING DEPARTMENT SPECIFICATIONS. THE ALLOWABLE DEFLECTION RATE SHALL NOT EXCEED FIVE (5%) PERCENT. TESTING SHALL BE IN ACCORDANCE WITH A.S.T.M. D-3034.
- ALL SANITARY SEWERS MUST PASS A LOW PRESSURE AIR TEST, WHICH SHALL BE CONDUCTED IN ACCORDANCE WITH CITY OF MASSILLON SANITARY ENGINEERING DEPARTMENT SPECIFICATIONS. THE MAXIMUM ALLOWABLE TEST LEAKAGE SHALL BE 100 GAL./INCH. OF DIAMETER/MILE/DAY.
- MANHOLE CONSTRUCTION SHALL MEET THE REQUIREMENTS OF A.S.T.M. C-478 AND C-443. ALL MANHOLES SHALL BE AIR/VACUUM TESTED IN ACCORDANCE WITH AND MEET ALL THE REQUIREMENTS OF A.S.T.M. C1244.



NOTE:
THE 2'-6" DIMENSION IS A MINIMUM DIMENSION. IF ADJACENT PAVEMENT IS DAMAGED OR UNDERMINED DURING CONSTRUCTION, ADDITIONAL WIDTH WILL BE REQUIRED TO PROVIDE A SOUND PAVEMENT EDGE AS PER ODOT ITEM 202.05. IN THE EVENT THAT THE SAW CUT WOULD LIE WITHIN 3 FEET OF THE EDGE OF PAVEMENT OR FACE OF CURB, THE PAVEMENT REPLACEMENT SHALL EXTEND TO THE EDGE OF PAVEMENT OR FACE OF CURB, AT NO ADDITIONAL COST.

PAVEMENT REPLACEMENT SECTION

SCALE: NONE

KEYED NOTES:

- SAW CUT AND REMOVE THE EXISTING PAVEMENT FOR SANITARY SEWER. REPAIR PER PAVEMENT REPLACEMENT DETAIL, SEE THIS SHEET.
- PRIOR TO ORDERING THE SANITARY MANHOLE AND CONDUIT, THE CONTRACTOR SHALL EXPOSE THE EXISTING UTILITIES AT THE SPECIFIED LOCATIONS. TWO DAYS PRIOR TO EXPOSING, THE CONTRACTOR SHALL CONTACT THE PROJECT ENGINEER TO SCHEDULE A SURVEY CREW TO LOCATE AND ACQUIRE ELEVATIONS ON THE EXPOSED UTILITIES. (9 LOCATIONS TOTAL)

GENERAL NOTES:

- THE CLEARANCE BETWEEN THE PROPOSED SANITARY SEWER SHOWN HEREON AND THE EXISTING UTILITIES/TOPO FEATURES ARE BASED UPON THE PREVIOUS SITE PLAN DESIGN DATA. NO AS-CONSTRUCTED DATA HAS BEEN ACQUIRED.
- WHERE THE PROPOSED SEWER CROSSES OVER OR UNDER AN EXISTING SEWER OR UNDERGROUND UTILITY, THE CONTRACTOR SHALL LOCATE THE EXISTING PIPES OR UTILITIES BOTH AS TO LINE AND GRADE BEFORE STARTING TO LAY THE PROPOSED SANITARY SEWER. IF IT IS DETERMINED THAT THE PROPOSED SEWER WILL INTERSECT AN EXISTING SEWER OR UNDERGROUND UTILITY IF CONSTRUCTED AS SHOWN ON THE PLAN, THE PROJECT ENGINEER SHALL BE NOTIFIED BEFORE STARTING CONSTRUCTION OF ANY PORTION OF THE PROPOSED SEWER.

QUANTITIES			
ITEM	DESCRIPTION	UNIT	QTY
250	PAVEMENT REPLACEMENT (PER DETAIL)	SY	38
250	PAVEMENT REPLACEMENT (PER DETAIL) (FUTURE)	SY	105
603	6"x6" PRE-MANUFACTURED WYE	EA	1
603	6" SANITARY SEWER	LF	341
603	6" SANITARY SEWER (FUTURE)	LF	490
603	8" SANITARY SEWER	LF	120
604	MANHOLE: ODOT M.H. No. 3	EA	1
604	MANHOLE: ODOT M.H. No. 3 (FUTURE)	EA	1
659	SEEDING & MULCHING	LUMP	1

PLANS PREPARED BY:
COOPER & ASSOCIATES, LLP
ENGINEERS AND SURVEYORS

BRYAN J. ASHMAN JEROLD E. GEIB

1359 MARKET AVENUE NORTH
CANTON, OHIO 44714

PHONE (330) 452-5731
FAX No.(330) 452-9110

STRUCTURA
www.structura.com
t. 330.253.6950
f. 330.253.6955
60 South Maple St. Suite 301
Akron, OH 44333

All design ideas, arrangements and plans created or represented by this drawing are owned by and are the property of Structura Architects Ltd. and will be used for the specified project. None of the designs or arrangements shall be used by or disclosed to any other person, firm, or corporation for any purpose whatsoever without the written permission of Structura Architects Ltd. Written dimensions shall have precedence over verbal dimensions. Fabricators and installers shall verify all dimensions and conditions on site. Any variances in dimensions or conditions from those shown on these drawings shall be brought to the attention of Structura Architects Ltd. before proceeding with any construction. Deviation from the drawings and specifications without written permission from Structura Architects Ltd. will be the sole responsibility of the person or persons making the changes.

No.	Date
8/4/2009	

Project Name _____

Description _____

File Number _____

09126 Raw Bacon Addition

Raw Bacon Addition

description

SANITARY SEWER EXTENSION

FILE NUMBER

1888 Southway Street SE, Massillon, OH 44866