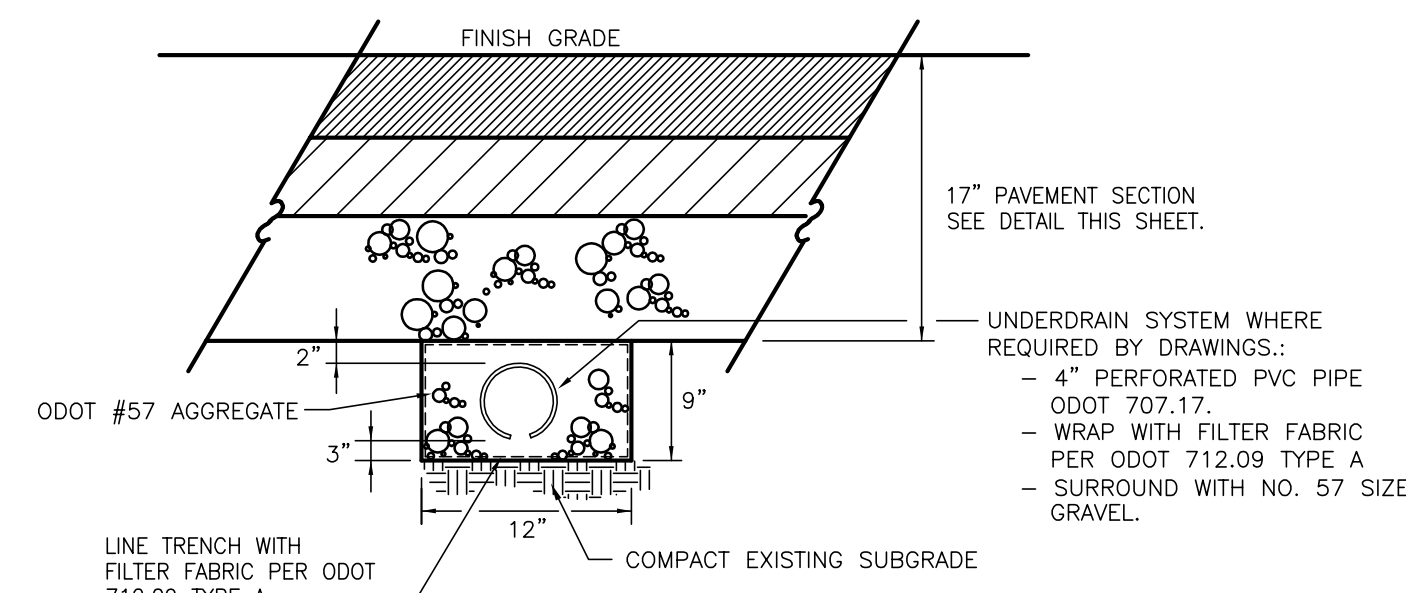


REGULAR DUTY
CONCRETE PAVEMENT DETAIL

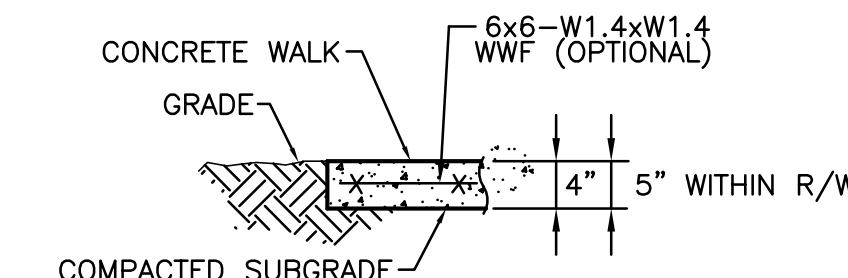
ROAD SURFACE MATERIALS		
TYPE	DESCRIPTION	THICKNESS
1	ODOT 451 REINFORCED CONCRETE W/ 1 LAYER 6x6-W2.9xW2.9 CLASS 'S' CONC.	6"
2	ODOT 304 AGGREGATE	4"

GRAVEL PAVING DETAIL

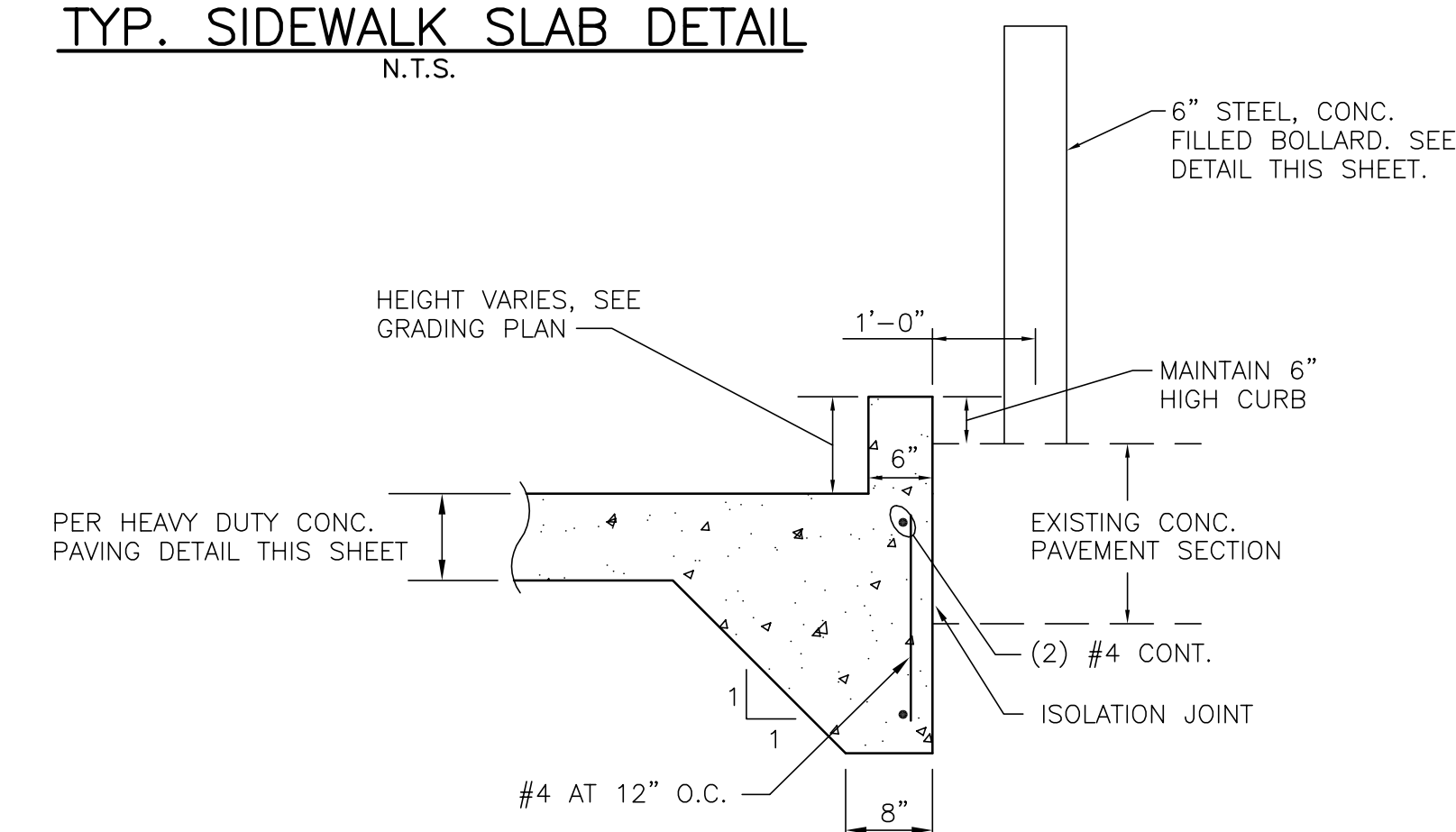
ROAD SURFACE MATERIALS		
TYPE	DESCRIPTION	THICKNESS
1	#57 LESTONE AGGREGATE	6"
2	#1'S AGGREGATE	8"



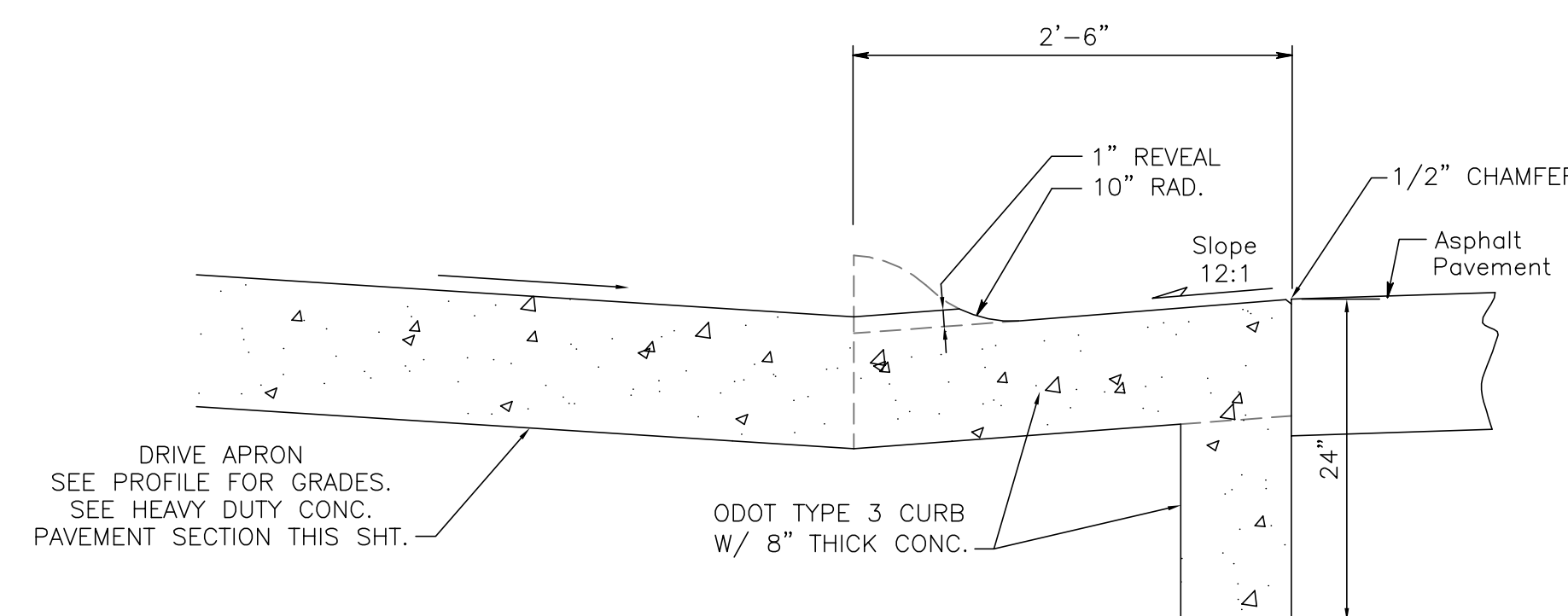
UNDERDRAIN (FINGERDRAIN) DETAIL
N.T.S.



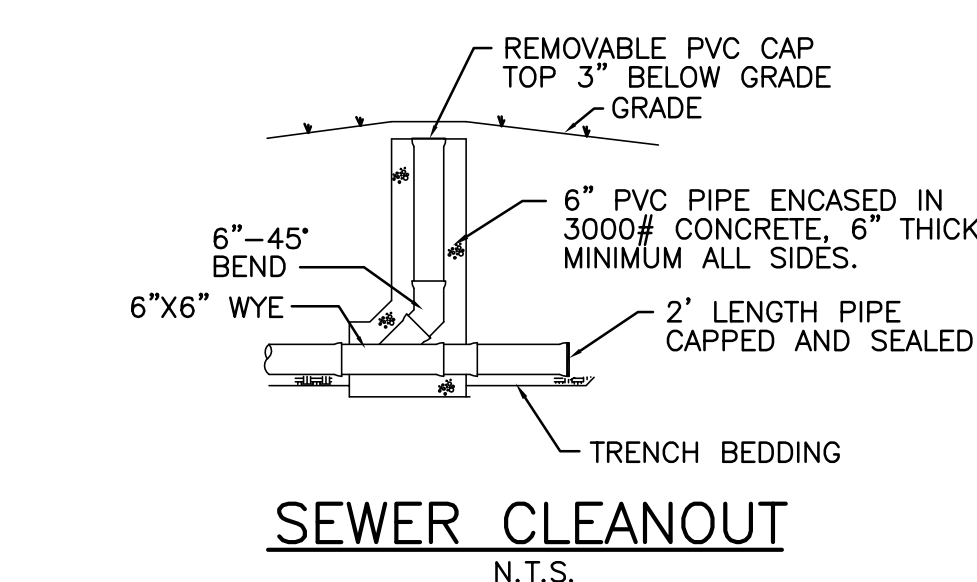
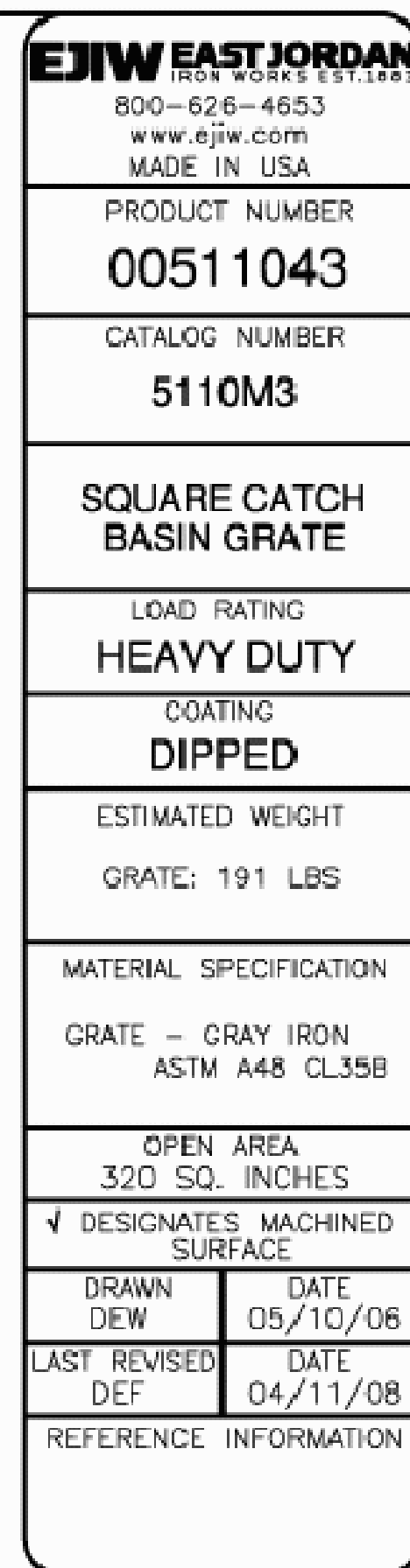
TYP. SIDEWALK SLAB DETAIL
N.T.S.



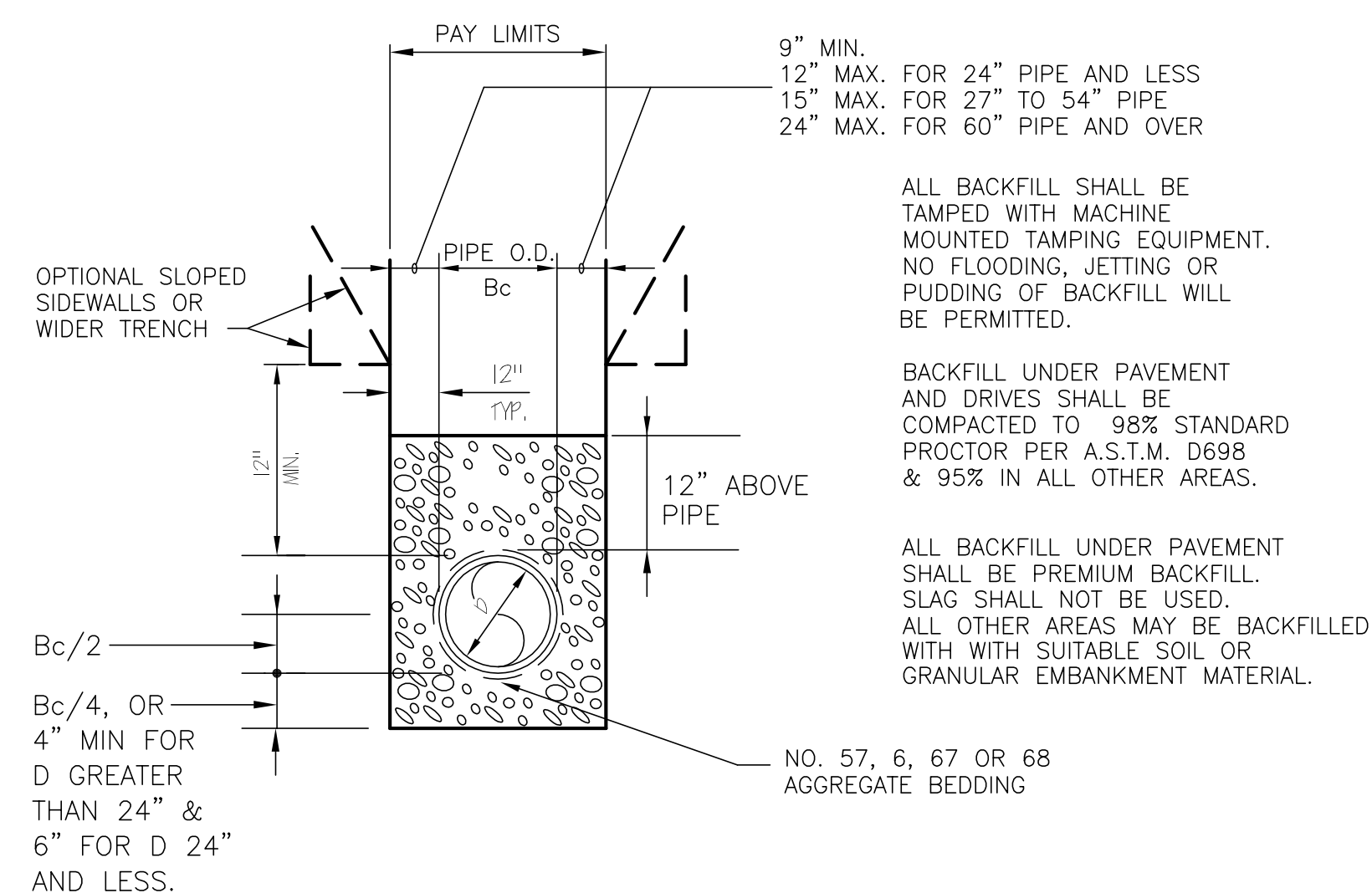
MONOLITHIC CURB AND CONC. PAVEMENT
(SEE SECTION A-A ON SHEET C2)



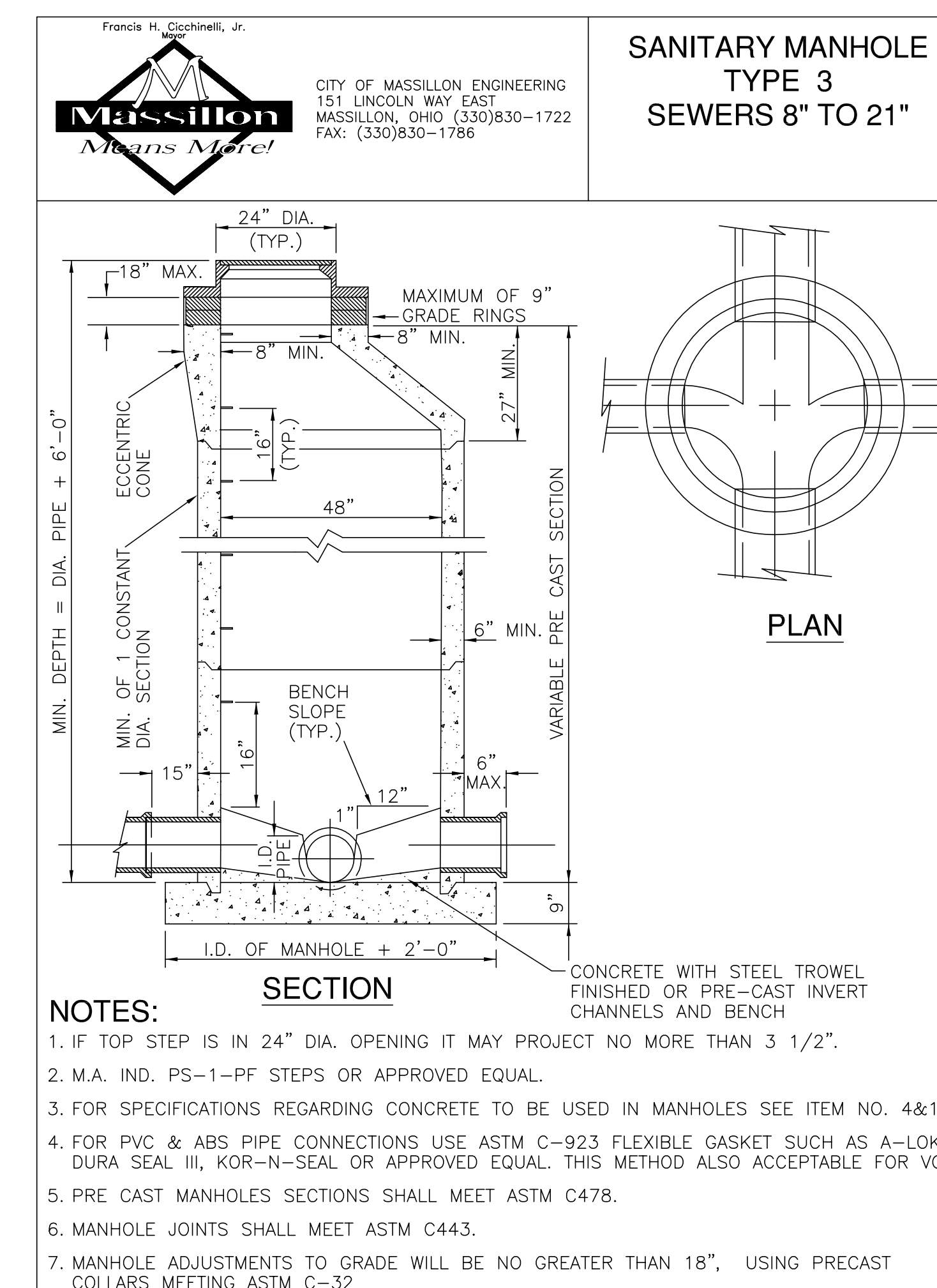
MONOLITHIC CONC. CURB, GUTTER
AND DRIVE APRON DETAIL
N.T.S.



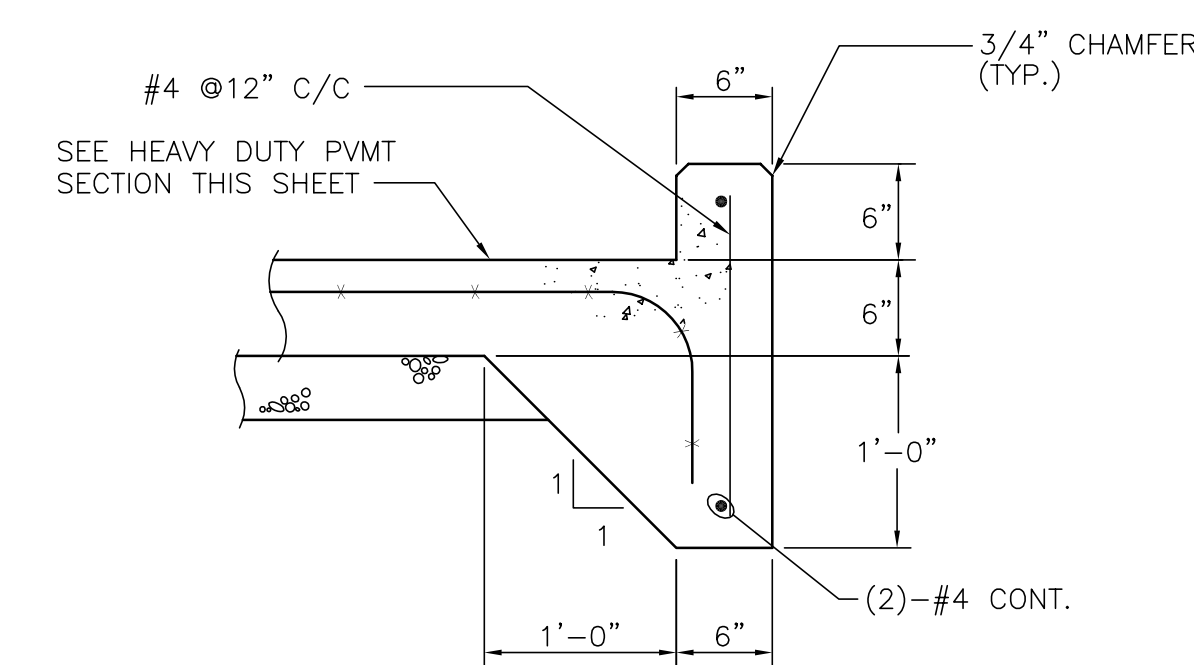
SEWER CLEANOUT
N.T.S.



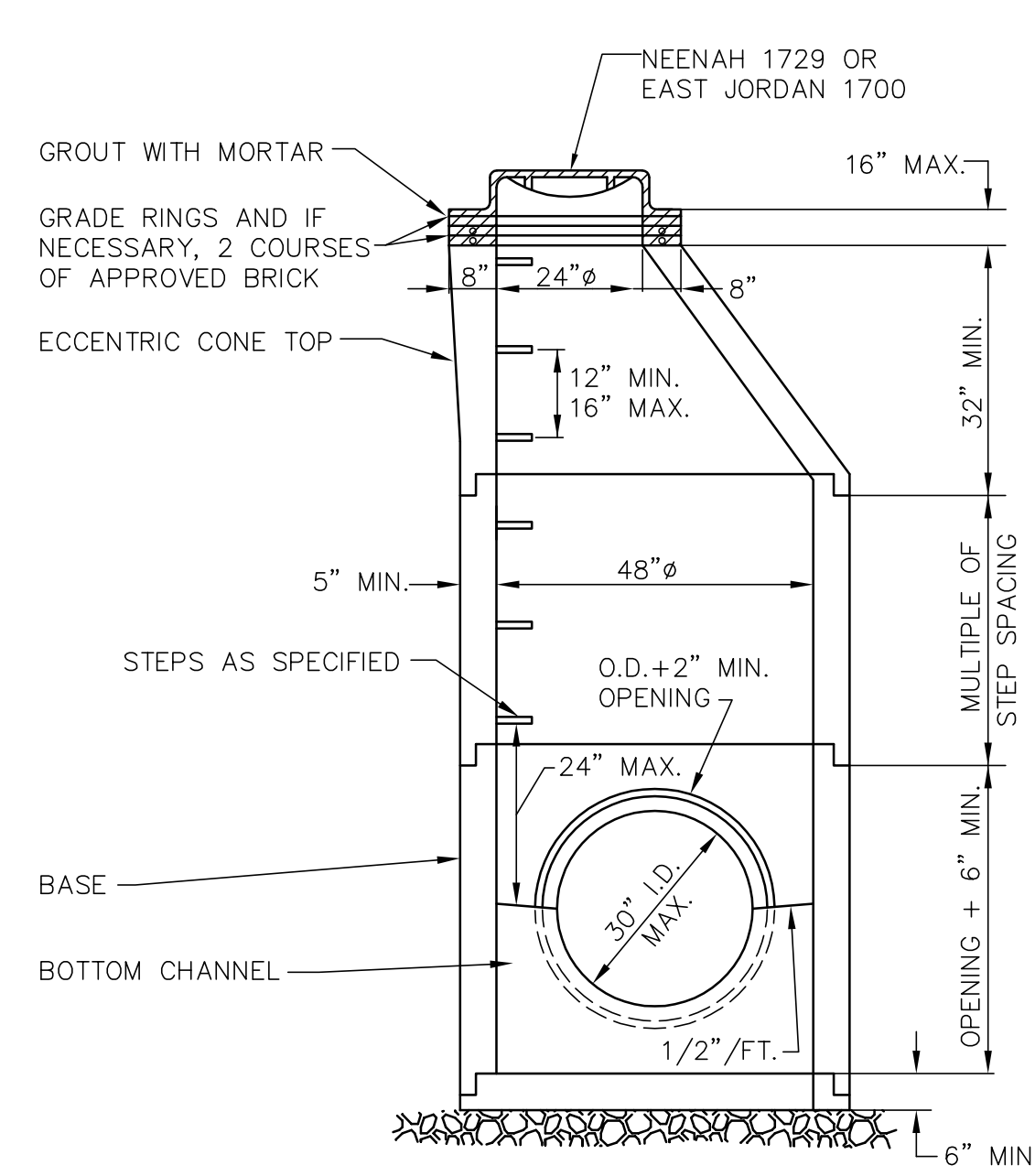
TYPICAL FLEXIBLE PIPE TRENCH DETAIL
N.T.S.



SANITARY MANHOLE
TYPE 3
SEWERS 8" TO 21"



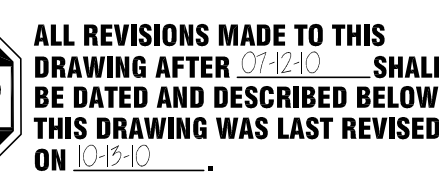
MONOLITHIC CONC. CURB AND
DRIVE APRON DETAIL
N.T.S.



PRECAST CONCRETE STORM MANHOLE

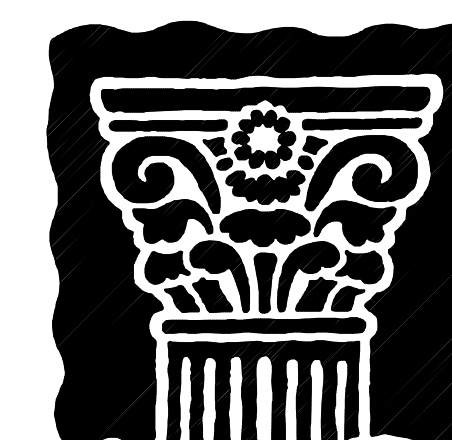
1. **NOTES:**
 - A. SECTIONS OF THE PRECAST MANHOLE SHALL BE CAST AND ASSEMBLED WITH EITHER ALL TONGUE OR ALL GROOVE ENDS UP. LIFT HOLES MAY BE PROVIDED IN EACH SECTION FOR HANDLING.
 - B. TOP AND TRANSITION (OR REDUCER) SECTIONS MAY BE EITHER ECCENTRIC CONE, CONCRETE CONE OR FLAT SLAB.
 - C. BASES FOR MANHOLES ARE CAST WITH MONOLITHIC FLOOR AND RISERS WHICH MAY BE SHOWN IN ONE OR TWO OPERATIONS. A PERMISSIBLE ALTERNATE IS TO CAST AND SHIP THE FLOOR AND BARREL SEPARATELY. OPENINGS FOR INLET AND OUTLET PIPES SHALL BE PROVIDED, EITHER WHEN THE UNIT IS CAST OR LATER, TO MEET PROJECT REQUIREMENTS. BOTTOM CHANNELS WILL BE FORMED OF CONCRETE PRECAST IN THE BASE OR BY FIELD CONSTRUCTION. BASES MAY ALSO BE POURED IN PLACE.
 - D. OPENINGS IN RISER SECTIONS FOR 18" AND SMALLER INLET PIPES SHALL BE PREFABRICATED. FLEXIBLE CONNECTIONS SHALL BE PROVIDED FOR SANITARY AND COMBINED SEWERS.
 - E. BRICK SHALL CONFORM TO ASTM C-32.
 - F. JOINT SEAL BETWEEN PRECAST MANHOLE SECTIONS ON SEWERS SHALL BE RESILIENT AND FLEXIBLE GASKET JOINTS PER ASTM C-443 OR LATEST EDITION.
 - G. MATERIALS FOR BASES AND OTHER PRECAST SECTIONS, INCLUDING REINFORCEMENT NOT SPECIFIED HEREIN, SHALL COMPLY WITH THE SPECIFICATIONS.
 - H. PRECAST MANHOLE SHALL CONFORM TO THE REQUIREMENTS OF ASTM C-478.
 - I. SEAL LIFT HOLES WITH APPROVED CONCRETE PLUGS AND BIT.
2. MANHOLE STEPS -- PLASTIC MEETING THE REQUIREMENTS OF ASTM 2146-68 TYPE I GRADE 49108 AND DOT S.S.

SITE DETAILS



NO	DATE	REVISION DESCRIPTION
①	07-12-10	ISSUED FOR BIDDING
②	08-27-10	ADDED DETAILS
③	09-14-10	FINAL BID/ PERMIT DOCUMENTS
④	10-13-10	ADDED DETAIL

SEE THE FOLLOWING WEBSITE FOR LATEST DRAWINGS:
ISSUED FOR THIS PROJECT.
www.schumacherconstruction.com/drawings

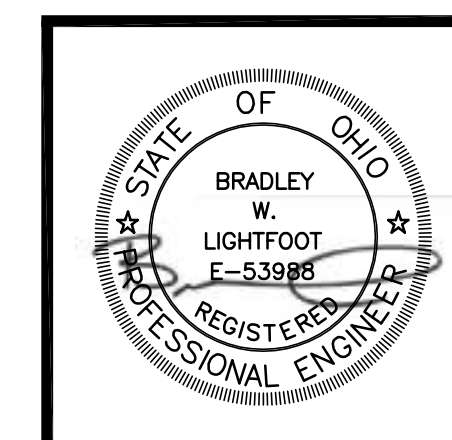


JOHN PATRICK
PICARD
ARCHITECT, INC.

720 McKINLEY AVENUE, NW
CANTON, OHIO 44703
PHONE (330) 471-9000
FAX (330) 471-9549



PHASE 2 ADDITIONS
MASSILLON PRODUCTION FACILITY
4100 MILLENNIUM BOULEVARD SE
MASSILLON, OHIO 44646



Project Number
10003

Date
07-09-10

Scale
AS SHOWN

Sheet

C6

WARNING: THIS DOCUMENT CONTAINS SENSITIVE SECURITY INFORMATION THAT IS CONTROLLED BY SHEARER'S FOODS INC. NO PART OF THIS INFORMATION MAY BE DISCLOSED TO PERSONS WITHOUT "NEED TO KNOW," EXCEPT WITH WRITTEN PERMISSION FROM A CORPORATE OFFICER OF SHEARER'S FOODS INC.. UNAUTHORIZED RELEASE MAY RESULT IN LEGAL PROSECUTION.