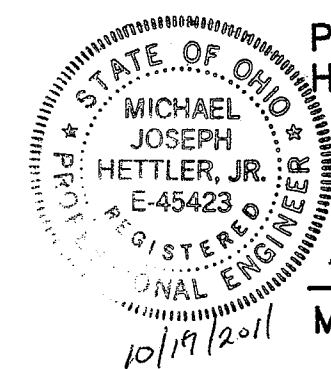


SITE IMPROVEMENT PLANS FOR
MARTIN PALLET, INC.
TRUCK REPAIR FACILITY
CITY OF MASSILLON
STARK COUNTY, OHIO

OCTOBER 2011



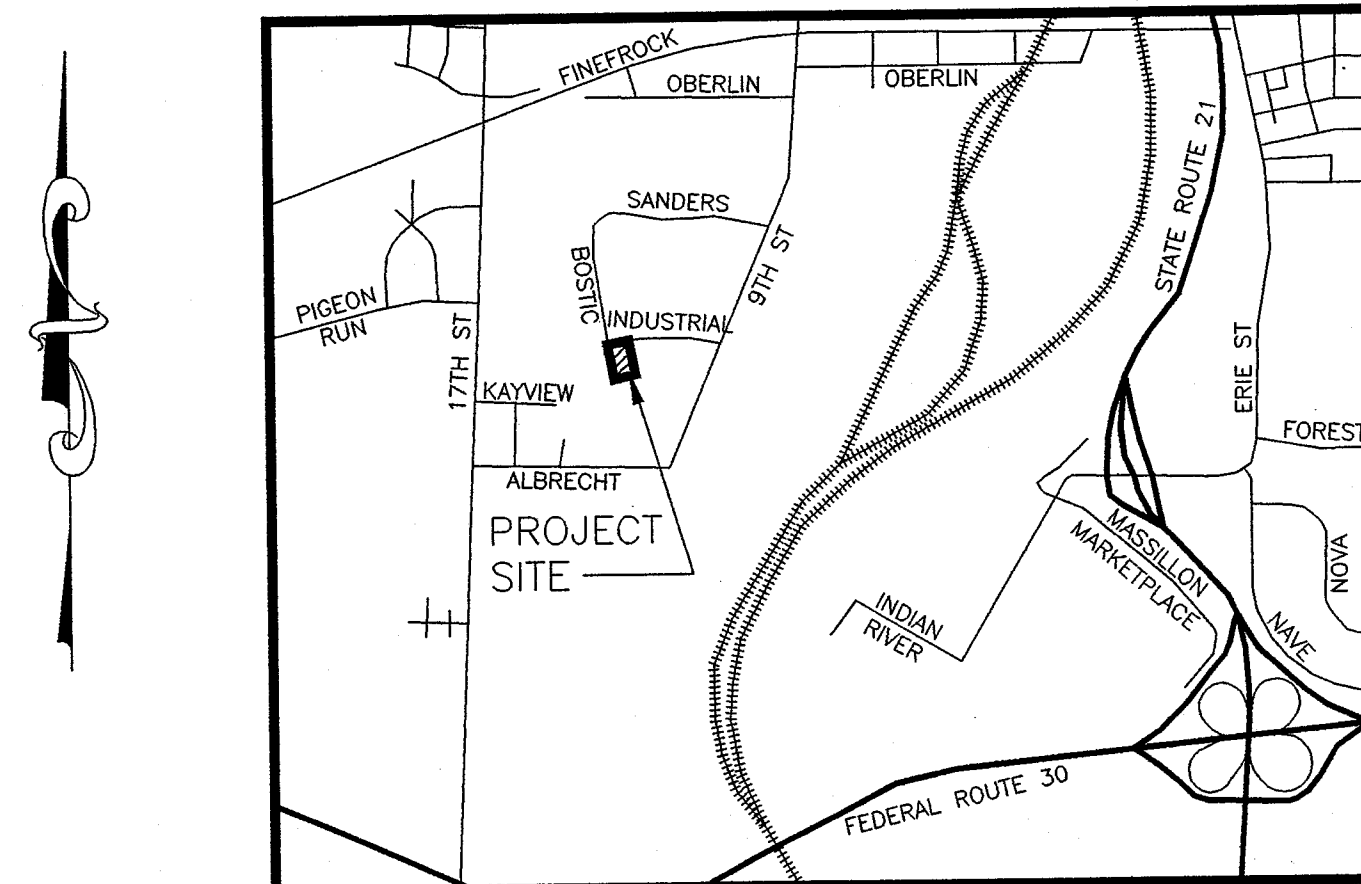
PREPARED AND SUBMITTED BY:
HETTLER ENGINEERING LLC

Michael J. Hettler, Jr.
MICHAEL J. HETTLER, JR., P.E.

APPROVED BY THE MASSILLON CITY ENGINEER
THIS 15 DAY OF OCTOBER, 20 11.

K.A. Dylewski
KEITH A. DYLEWSKI, P.E.
CITY ENGINEER

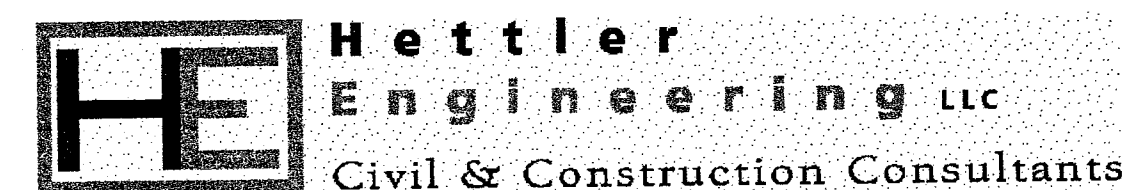
ONLY APPROVED PLANS SIGNED BY THE CITY
ENGINEER ARE TO BE USED FOR CONSTRUCTION.



LOCATION MAP
NOT TO SCALE

INDEX OF SHEETS

TITLE SHEET	1
EXISTING CONDITIONS AND REMOVALS PLAN	2
SITE PLAN	3
GRADING PLAN	4
UTILITY PLAN	5
STORM WATER POLLUTION PREVENTION PLAN	6
NOTES	7
DETAILS	8



1225 North Main Street • Suite A • North Canton, OH 44720
PH: 330-966-1776 • civileng@hettlerengineering.com

SURVEYING SERVICES BY

BUCKEYE SURVEYING SERVICES, INC.
1050 LIBERTY LANE N.W.
NORTH CANTON, OHIO 44720
(330) 966-5259

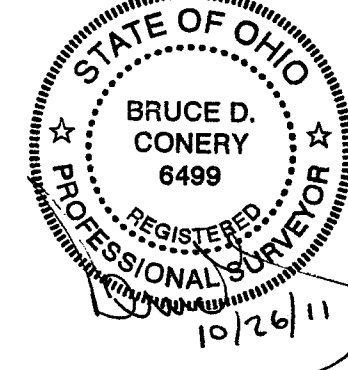
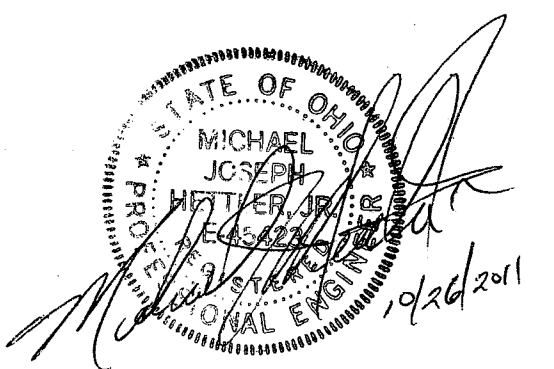
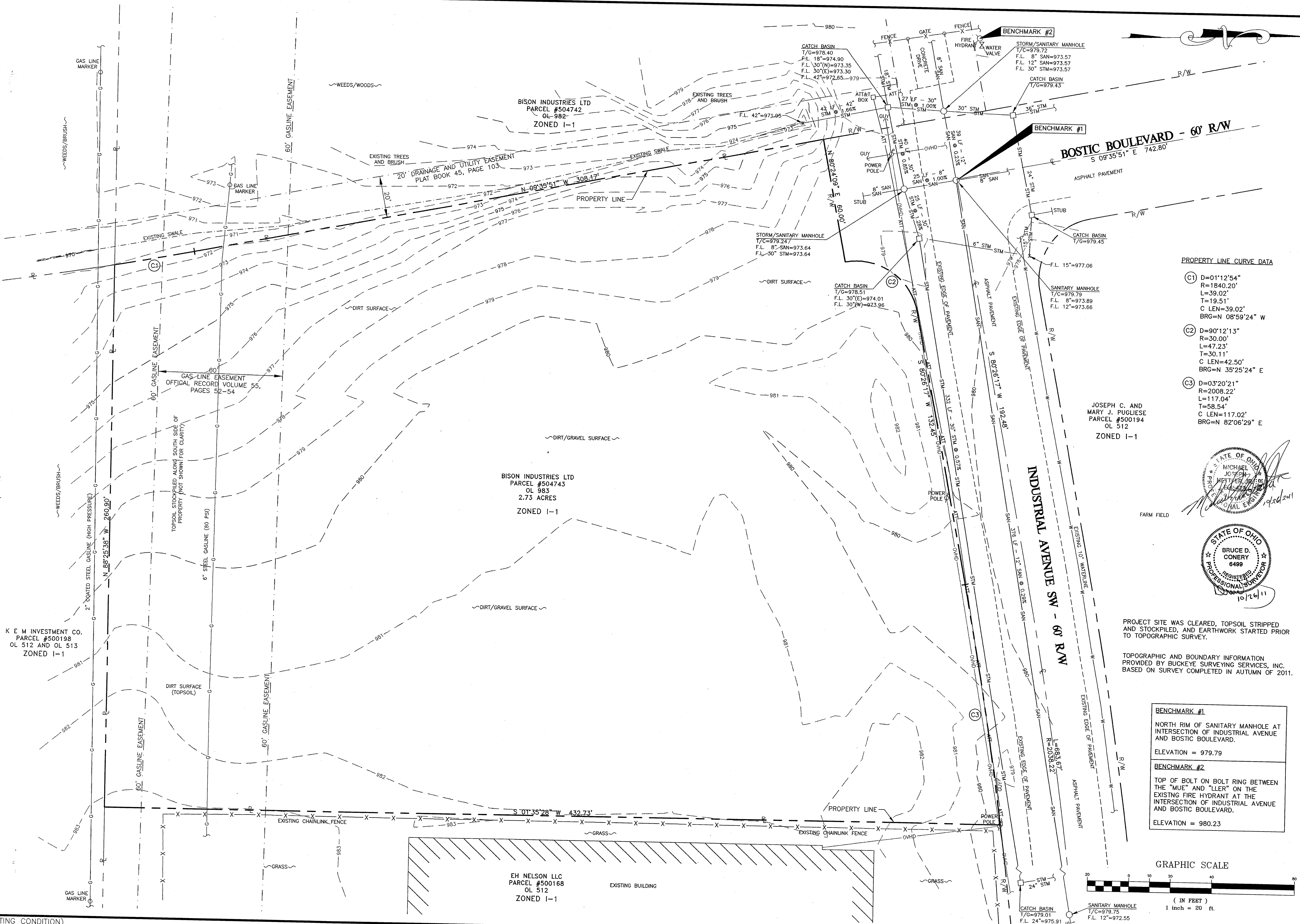
CALL 2 WORKING DAYS
BEFORE YOU DIG
1-800-362-2764
OHIO UTILITIES PROTECTION SERVICE
(CONTACT NON-MEMBERS DIRECTLY)

EXISTING CONDITIONS AND
REMOVALS PLAN

Hettler Engineering LLC
Civil & Construction Consultants
1225 North Main Street - Suite A - North Canton, OH 44720
PH: 330-966-1776 - chvlleng@hettlerengineering.com

MARTIN PALLET, INC.
TRUCK REPAIR FACILITY
OUTLOT 983
CITY OF MASSILLON
STARK COUNTY, OHIO

NO	DATE	DESCRIPTION	BY



PROJECT SITE WAS CLEARED, TOPSOIL STRIPPED AND STOCKPILED, AND EARTHWORK STARTED PRIOR TO TOPOGRAPHIC SURVEY.

TOPOGRAPHIC AND BOUNDARY INFORMATION PROVIDED BY BUCKEYE SURVEYING SERVICES, INC. BASED ON SURVEY COMPLETED IN AUTUMN OF 2011.

K E M INVESTMENT CO.
PARCEL #500198
OL 512 AND OL 513
ZONED I-1

BISON INDUSTRIES LTD
PARCEL #504743
OL 983
2.73 ACRES
ZONED I-1

EH NELSON LLC
PARCEL #500168
OL 512
ZONED I-1

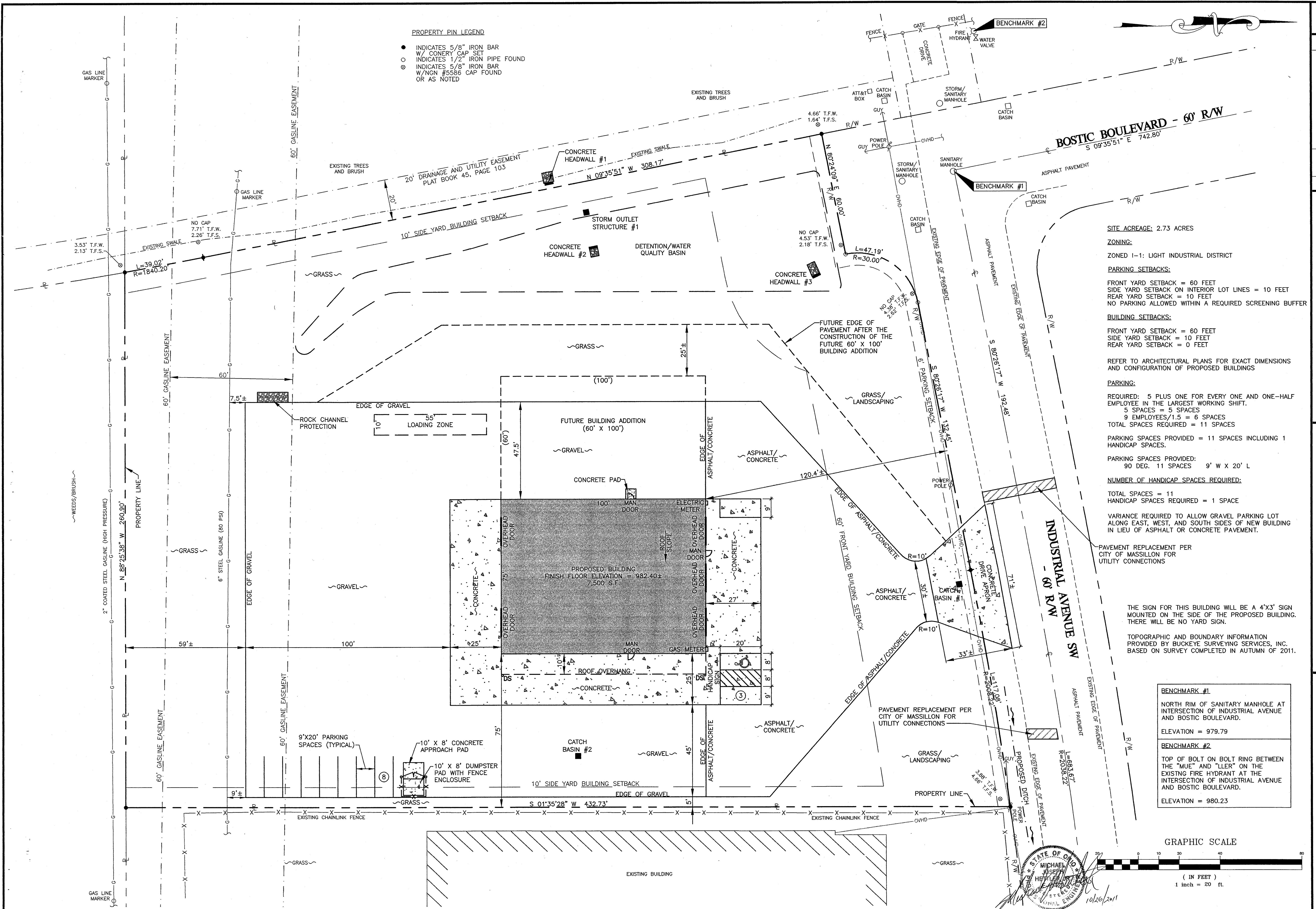
(EXISTING CONDITION)

SITE PLAN

Hettler Engineering Inc.
Civil & Construction Consultants
1225 North Main Street - Suite A - North Canton, OH 44720
PH: 330-966-1776 cvlengr@hettlerengineering.com

MARTIN PALLET, INC.
TRUCK REPAIR FACILITY
OULOT 983
CITY OF MASSILLON
STARK COUNTY, OHIO

NO	DATE	DESCRIPTION	BY



SITE ACREAGE: 2.73 ACRES

ZONING:
ZONED I-1: LIGHT INDUSTRIAL DISTRICT

PARKING SETBACKS:
FRONT YARD SETBACK = 60 FEET
SIDE YARD SETBACK ON INTERIOR LOT LINES = 10 FEET
REAR YARD SETBACK = 10 FEET
NO PARKING ALLOWED WITHIN A REQUIRED SCREENING BUFFER

BUILDING SETBACKS:
FRONT YARD SETBACK = 60 FEET
SIDE YARD SETBACK = 10 FEET
REAR YARD SETBACK = 0 FEET

REFER TO ARCHITECTURAL PLANS FOR EXACT DIMENSIONS AND CONFIGURATION OF PROPOSED BUILDINGS

PARKING:
REQUIRED: 5 PLUS ONE FOR EVERY ONE AND ONE-HALF EMPLOYEE IN THE LARGEST WORKING SHIFT.
5 SPACES = 5 SPACES
9 EMPLOYEES/1.5 = 6 SPACES
TOTAL SPACES REQUIRED = 11 SPACES

PARKING SPACES PROVIDED = 11 SPACES INCLUDING 1 HANDICAP SPACES.

PARKING SPACES PROVIDED:
90 DEG. 11 SPACES 9' W X 20' L

NUMBER OF HANDICAP SPACES REQUIRED:
TOTAL SPACES = 11
HANDICAP SPACES REQUIRED = 1 SPACE

VARIANCE REQUIRED TO ALLOW GRAVEL PARKING LOT ALONG EAST, WEST, AND SOUTH SIDES OF NEW BUILDING IN LIEU OF ASPHALT OR CONCRETE PAVEMENT.

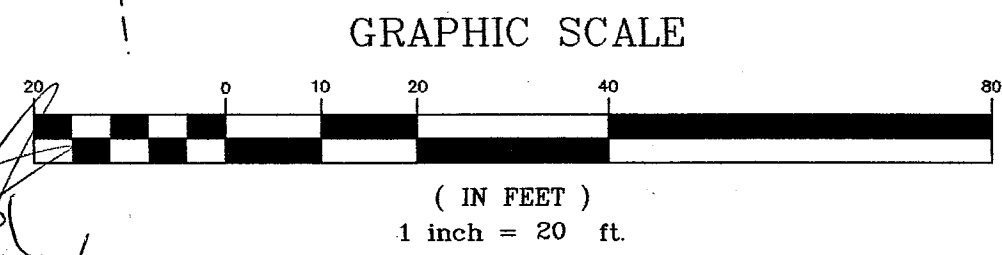
PAVEMENT REPLACEMENT PER CITY OF MASSILLON FOR UTILITY CONNECTIONS

THE SIGN FOR THIS BUILDING WILL BE A 4'X3' SIGN MOUNTED ON THE SIDE OF THE PROPOSED BUILDING. THERE WILL BE NO YARD SIGN.

TOPOGRAPHIC AND BOUNDARY INFORMATION PROVIDED BY BUCKEYE SURVEYING SERVICES, INC. BASED ON SURVEY COMPLETED IN AUTUMN OF 2011.

BENCHMARK #1
NORTH RIM OF SANITARY MANHOLE AT INTERSECTION OF INDUSTRIAL AVENUE AND BOSTIC BOULEVARD.
ELEVATION = 979.79

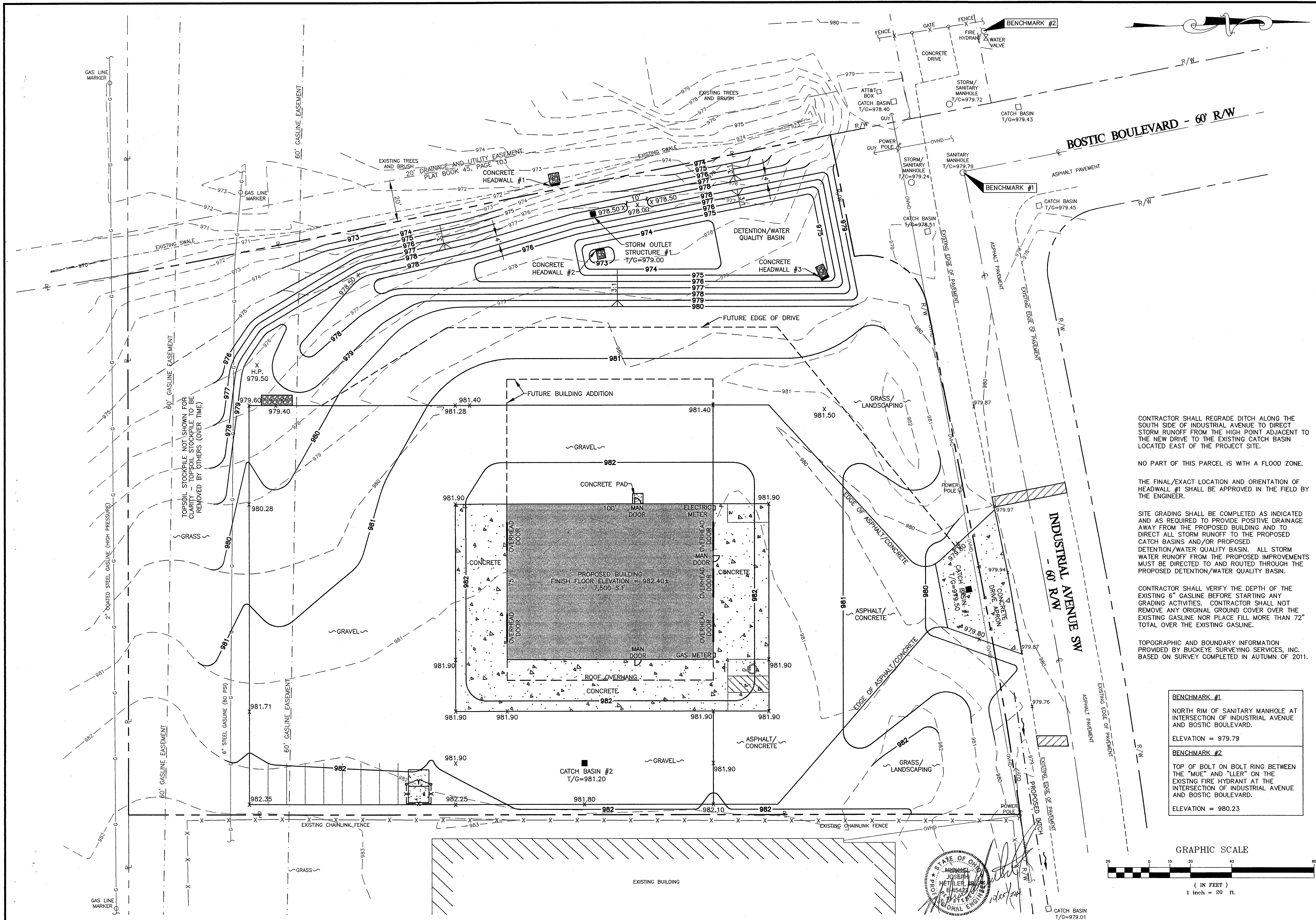
BENCHMARK #2
TOP OF BOLT ON BOLT RING BETWEEN THE "MUE" AND "LLER" ON THE EXISTING FIRE HYDRANT AT THE INTERSECTION OF INDUSTRIAL AVENUE AND BOSTIC BOULEVARD.
ELEVATION = 980.23



GRADING PLAN

Hettler Engineering LLC
Civil & Construction Consultants
1225 North Main Street • Suite A • North Canton, OH 44720
PH: 330-966-1776 • cville@hettlerengineering.com

MARTIN PALLET, INC.
TRUCK REPAIR FACILITY
OUTLOT 983
CITY OF MASSILLON
STARK COUNTY, OHIO



CONTRACTOR SHALL REGRADE DITCH ALONG THE SOUTH SIDE OF INDUSTRIAL AVENUE TO DIRECT STORM RUNOFF FROM THE HIGH POINT ADJACENT TO THE NEW DRIVE TO THE EXISTING CATCH BASIN LOCATED EAST OF THE PROJECT SITE.

NO PART OF THIS PARCEL IS WITH A FLOOD ZONE.

THE FINAL/EXACT LOCATION AND ORIENTATION OF HEADWALL #1 SHALL BE APPROVED IN THE FIELD BY THE ENGINEER.

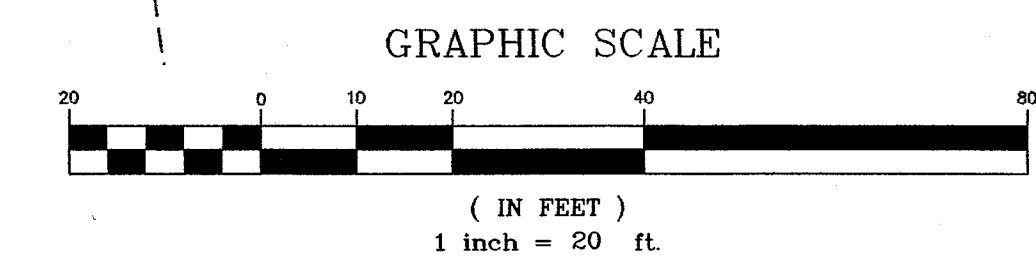
SITE GRADING SHALL BE COMPLETED AS INDICATED AND AS REQUIRED TO PROVIDE POSITIVE DRAINAGE AWAY FROM THE PROPOSED BUILDING AND TO DIRECT ALL STORM RUNOFF TO THE PROPOSED CATCH BASINS AND/OR PROPOSED DETENTION/WATER QUALITY BASIN. ALL STORM WATER RUNOFF FROM THE PROPOSED IMPROVEMENTS MUST BE DIRECTED TO AND ROUTED THROUGH THE PROPOSED DETENTION/WATER QUALITY BASIN.

CONTRACTOR SHALL VERIFY THE DEPTH OF THE EXISTING 6" GASLINE BEFORE STARTING ANY GRADING ACTIVITIES. CONTRACTOR SHALL NOT REMOVE ANY ORIGINAL GROUND COVER OVER THE EXISTING GASLINE NOR PLACE FILL MORE THAN 72" TOTAL OVER THE EXISTING GASLINE.

TOPOGRAPHIC AND BOUNDARY INFORMATION PROVIDED BY BUCKEYE SURVEYING SERVICES, INC. BASED ON SURVEY COMPLETED IN AUTUMN OF 2011.

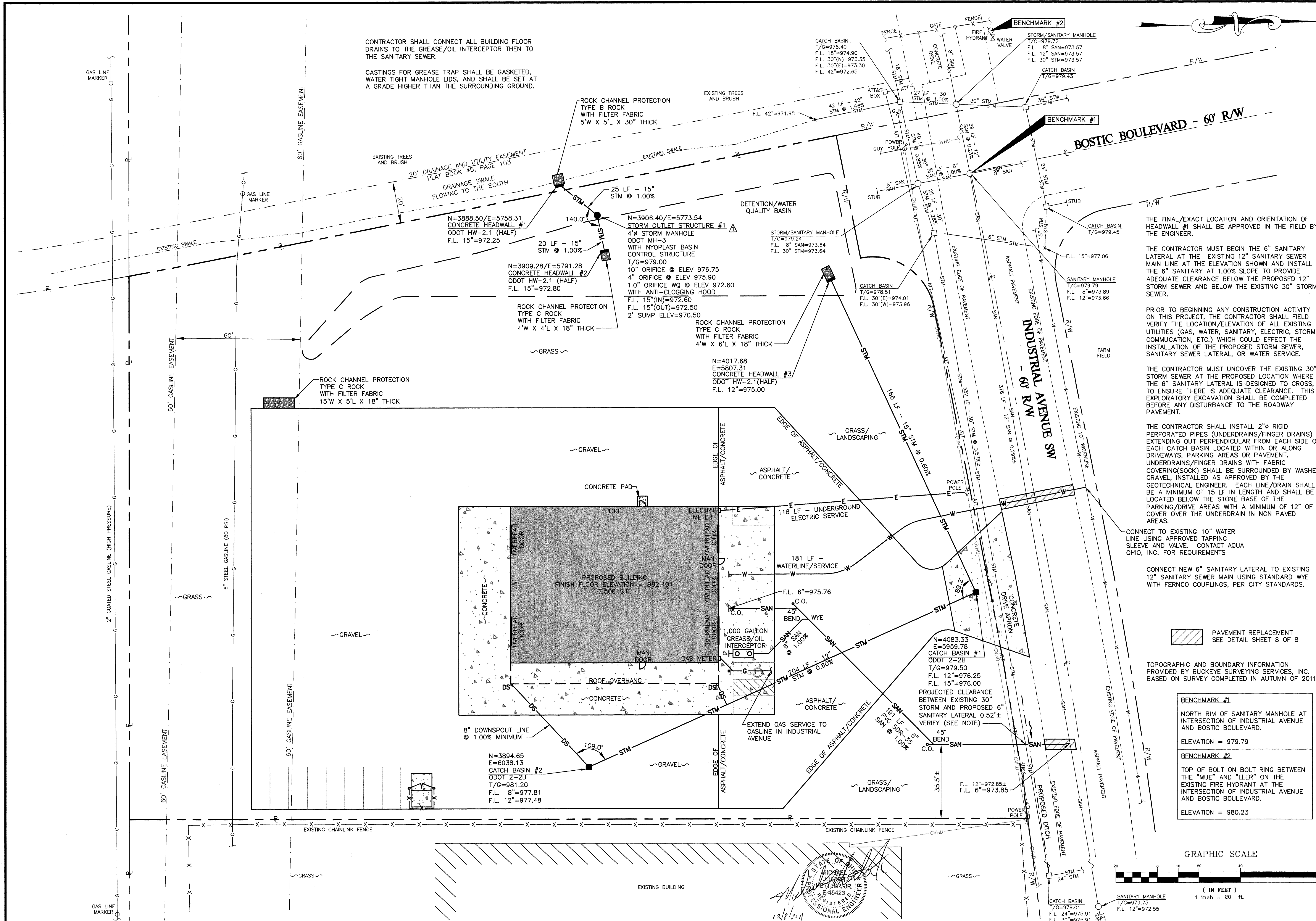
BENCHMARK #1
NORTH RIM OF SANITARY MANHOLE AT INTERSECTION OF INDUSTRIAL AVENUE AND BOSTIC BOULEVARD.
ELEVATION = 979.79

BENCHMARK #2
TOP OF BOLT ON BOLT RING BETWEEN THE "MUE" AND "LLER" ON THE EXISTING FIRE HYDRANT AT THE INTERSECTION OF INDUSTRIAL AVENUE AND BOSTIC BOULEVARD.
ELEVATION = 980.23



Hettler Engineering LLC
Civil & Construction Consultants

MARTIN PALLET, INC.
TRUCK REPAIR FACILITY
OUTLOT 983
CITY OF MASSILLON
STARK COUNTY, OHIO



GENERAL NOTES FOR STORM WATER POLLUTION PREVENTION PLAN:

1. TEMPORARY SOIL STABILIZATION (ODOT ITEM 207) SHALL OCCUR WITHIN SEVEN (7) DAYS AFTER ROUGH GRADING IF A DISTURBED AREA WILL REMAIN LONGER THAN TWENTY ONE (21) DAYS. PERMANENT SOIL STABILIZATION (ODOT ITEM 659) SHALL BE INSTALLED WITHIN SEVEN (7) DAYS AFTER FINAL GRADE IS REACHED ON ANY PORTION OF THE SITE (2 DAYS FOR AREAS WITHIN 50' OF STREAM). PERMANENT VEGETATION IS A GROUND COVER DENSE ENOUGH TO COVER 80% OF THE SOIL SURFACE AND MATURE ENOUGH TO SURVIVE WINTER WEATHER CONDITION.
2. ALL SEDIMENT AND EROSION CONTROLS SHALL BE INSPECTED ONCE EVERY 7 DAYS AND WITHIN 24 HOURS OF A 0.5" OR GREATER RAINFALL. A WRITTEN LOG OF THESE INSPECTIONS MUST BE KEPT. (DATES OF INSPECTION, WEATHER CONDITIONS, OBSERVATIONS, ACTIONS TAKEN TO CORRECT PROBLEM, AND DATE INFORMATION WAS TAKEN.) WHEN SEDIMENT AND EROSION CONTROL STRUCTURES/DEVICES NEED REPAIRED/ALTERED, THE WORK SHALL BE COMPLETED WITHIN THREE (3) DAYS OF INSPECTION (SEDIMENT PONDS - REPAIR WITHIN 10 DAYS)
3. NO SOLID OR LIQUID WASTE SHALL BE DISCHARGED INTO STORM WATER RUNOFF.
4. CONSTRUCTION VEHICLES ARE LIMITED TO THE CONSTRUCTION ACCESS ROAD NOTED ON THE PLAN. (STABILIZED CONSTRUCTION ENTRANCE).
5. OTHER EROSION CONTROL ITEMS MAY BE NECESSARY DUE TO ENVIRONMENTAL CONDITIONS.
6. THE SOIL EROSION FOR THE SITE WILL BE CONTROLLED WITH THE USE OF SILT FENCE, INLET PROTECTION, AND A CONSTRUCTION DRIVE ENTRANCE.
7. FOR DRAINAGE AREAS AND CALCULATIONS, SEE THE DRAINAGE REPORT FOR THIS PROJECT.

TOTAL SITE AREA = 2.73 ACRES
TOTAL SITE APPROXIMATE DISTURBED AREA = 2.70± ACRES
TOTAL SITE DRAINAGE AREA = 2.38 ACRES

CONSTRUCTION SEQUENCE:

1. INSTALL ALL SEDIMENT CONTROL DEVICES (SILT FENCE, INLET PROTECTION, AND STABILIZED CONSTRUCTION ENTRANCES) AS PER THE OHIO STANDARDS FOR STORM WATER MANAGEMENT LAND DEVELOPMENT AND URBAN STREAM PROTECTION, RAINWATER AND LAND DEVELOPMENT MANUAL.
2. THE CITY OF MASSILLON OR THEIR REPRESENTATIVE MUST INSPECT AND APPROVE ALL SEDIMENT CONTROL DEVICES PRIOR TO ANY EARTH MOVING ACTIVITY. A PRE-CONSTRUCTION MEETING IS REQUIRED. CONTACT THE CITY OF MASSILLON ENGINEER AT (330) 830-1722 TO SCHEDULE PRE-CONSTRUCTION MEETING.
3. CLEAR AND GRADE THE PROJECT SITE LOCATED WITHIN THE LIMITS OF DISTURBANCE AS INDICATED ON THE CONSTRUCTION DRAWINGS. CONSTRUCT ALL PROPOSED IMPROVEMENTS AND ALL UTILITIES.
4. PERMANENTLY STABILIZE ALL DISTURBED AREAS (ODOT 659). THE CITY OF MASSILLON OR THEIR REPRESENTATIVE MUST APPROVE ALL STABILIZATION PRIOR TO THE REMOVAL OF ANY SEDIMENT CONTROL DEVICES.
5. INSTALL ALL POST CONSTRUCTION BMP's AS SOON AS CONSTRUCTION IS COMPLETE AND STABILIZATION HAS OCCURRED AS REQUIRED.

TEMPORARY SOIL EROSION AND SEDIMENT CONTROL

THE CONTRACTOR SHALL PREVENT AND/OR REDUCE AND CONTROL SOIL EROSION RESULTING FROM THE PROPOSED IMPROVEMENTS. THE USE OF SILT FENCING, JUTE MATTING, TEMPORARY SEEDING, SOD, SILT CHECKS, INLET PROTECTIONS AROUND ALL CATCH BASINS, STABILIZED CONSTRUCTION ENTRANCE(S), ETC. WILL BE REQUIRED. SEDIMENT CONTROL STRUCTURES/DEVICES SHALL BE INSTALLED IN ACCORDANCE WITH THE MANUAL, "RAINWATER AND LAND DEVELOPMENT - OHIO'S STANDARDS FOR STORMWATER MANAGEMENT LAND DEVELOPMENT AND URBAN STREAM PROTECTION" THIRD EDITION DATED 2006. SEDIMENT CONTROL DEVICES MUST BE INSTALLED PRIOR TO BEGINNING ANY CONSTRUCTION ACTIVITY. THE CONTRACTOR SHALL BE RESPONSIBLE FOR CONTINUED INSPECTION AND MAINTENANCE OF ALL SEDIMENT CONTROL DEVICES. THE CONTRACTOR SHALL FOLLOW THE REQUIREMENTS SET FORTH ON THE APPROVED STORM WATER POLLUTION PREVENTION PLAN IN APPLICABLE, OR AS DETAILED ON THE CONSTRUCTION PLANS, AS SPECIFIED BY THE CITY OF MASSILLON.

DISPOSAL OF SOLID, SANITARY AND TOXIC WASTE

SOLID, SANITARY AND TOXIC WASTE MUST BE DISPOSED OF IN A PROPER MANNER IN ACCORDANCE WITH LOCAL, STATE AND FEDERAL REGULATIONS. IT IS PROHIBITED TO BURN, BURY OR POUR OUT ONTO THE GROUND OR INTO STORM SEWERS ANY SOLVENTS, PAINTS, STAINS, GASOLINE, DIESEL FUEL, USED MOTOR OIL, HYDRAULIC FLUID, ANTIFREEZE, CEMENT CURING COMPOUNDS AND OTHER SUCH TOXIC OR HAZARDOUS WASTES. WASH OUT OF CEMENT TRUCKS SHOULD OCCUR IN A DIKED, DESIGNATED AREA WHERE THE WASTE CAN BE COLLECTED AND DISPOSED OF PROPERLY WHEN THEY HARDEN. STORAGE TANKS SHOULD BE LOCATED IN DIKED AREAS AWAY FROM DRAINAGE CHANNELS. THE DIKED AREA SHOULD HOLD A VOLUME 110% OF THE LARGEST TANK.

PROJECT DESCRIPTION AND NARRATIVE

THE PROPOSED PROJECT CONSISTS OF EARTHWORK, GRADING, ASPHALT/CONCRETE PARKING AREAS AND DRIVES, AND A NEW BUILDING FACILITY. THE SITE WORK WILL INCLUDE CLEARING & GRUBBING, REMOVALS, EARTHWORK, UTILITIES, GRADING, ASPHALT/CONCRETE PAVEMENT, CONCRETE, AND DRIVE APRONS.

SEED, MULCH, FERTILIZE AND LIME REQUIREMENTS SHALL MEET THE OHIO DEPARTMENT OF TRANSPORTATION - CONSTRUCTION MATERIAL SPECIFICATIONS - ITEM 207 TEMPORARY SEDIMENT AND EROSION CONTROLS AND ITEM 659 SEEDING AND MULCHING. SEEDING METHODS SHALL BE PER ODOT 659.12 (INCLUDING SEEDING SCHEDULE INFORMATION).

TOPSOIL NOTE:

EXCESS TOPSOIL NOT NEEDED FOR RESPREAD WILL BE REMOVED FROM THE PROJECT SITE.

INLET PROTECTION

THE CONTRACTOR MAY USE A GEOTEXTILE-STONE INLET PROTECTION ON ALL EXISTING INLETS, OR MAY SUBSTITUTE WITH "DANDY BAGS" OR APPROVED EQUAL, WITHIN THE LIMITS OF THE DISTURBED AREAS.

SOIL TYPES

CpB - CHILI SILT LOAM, SOIL GROUP "B"
WbB - WHEELING SILT LOAM, SOIL GROUP "B"

POST-CONSTRUCTION WATER QUALITY DESIGN

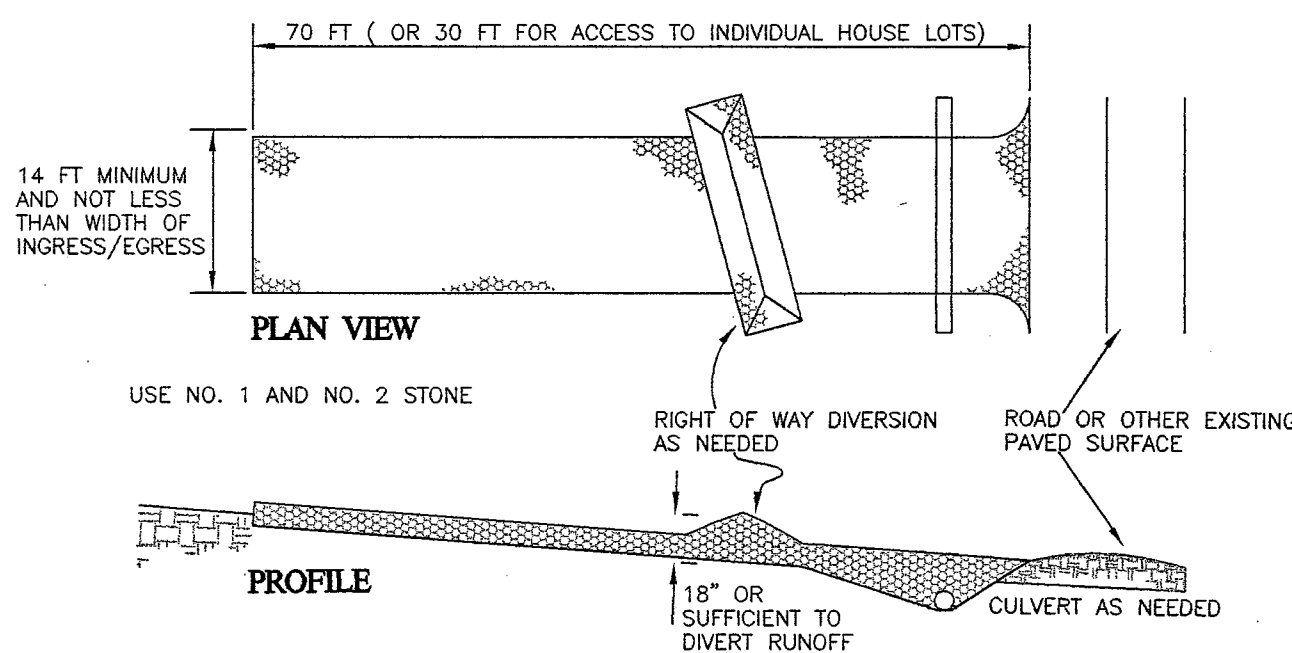
WATER QUALITY VOLUME IS DETERMINED USING $WQV = 0.75 \times C \times A / 12$ PER OHIO EPA PHASE 2 REQUIREMENTS.

DRAINAGE AREA AND RUNOFF INFORMATION
TYPE OF LAND USE
COMMERCIAL

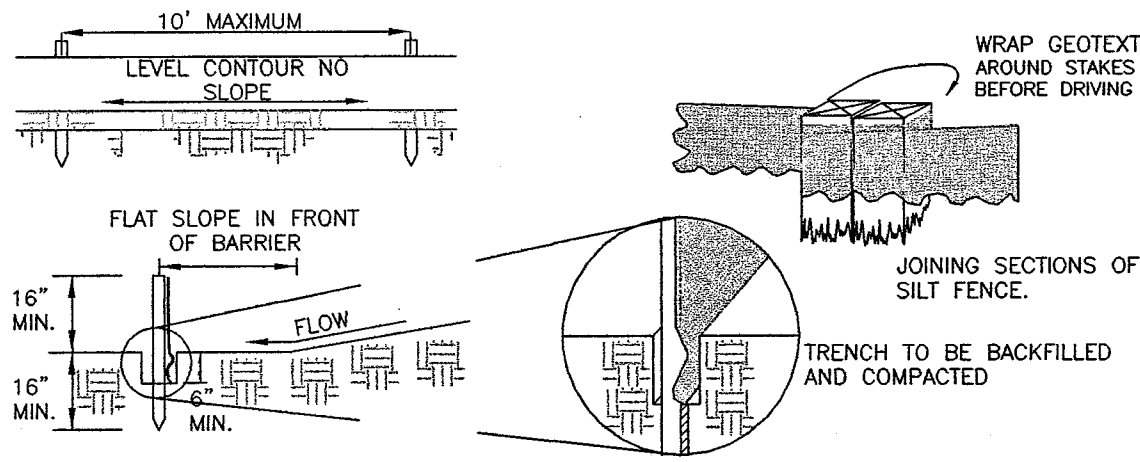
TOTAL DRAINAGE AREA = 2.38
WEIGHTED RUNOFF COEFFICIENT = 0.80
 $WQV = 0.75 \times 0.80 \times 2.38 / 12 \times 43560 \text{ SF/AC} = 5183 \text{ C.F.} + 20\% \text{ FOR SILTATION} = 6219 \text{ C.F.}$

WATER QUALITY VOLUME (C.F.) = 6219 C.F. REQUIRED

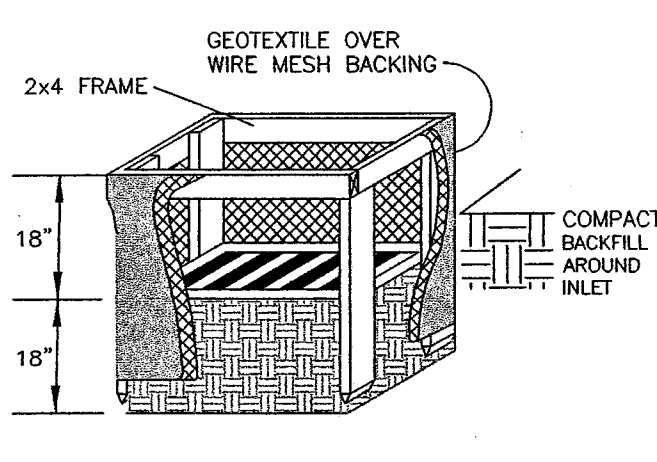
WATER QUALITY VOLUME OF 6603 C.F. PROVIDED AT ELEVATION 975.90 IN PROPOSED DRY DETENTION BASIN



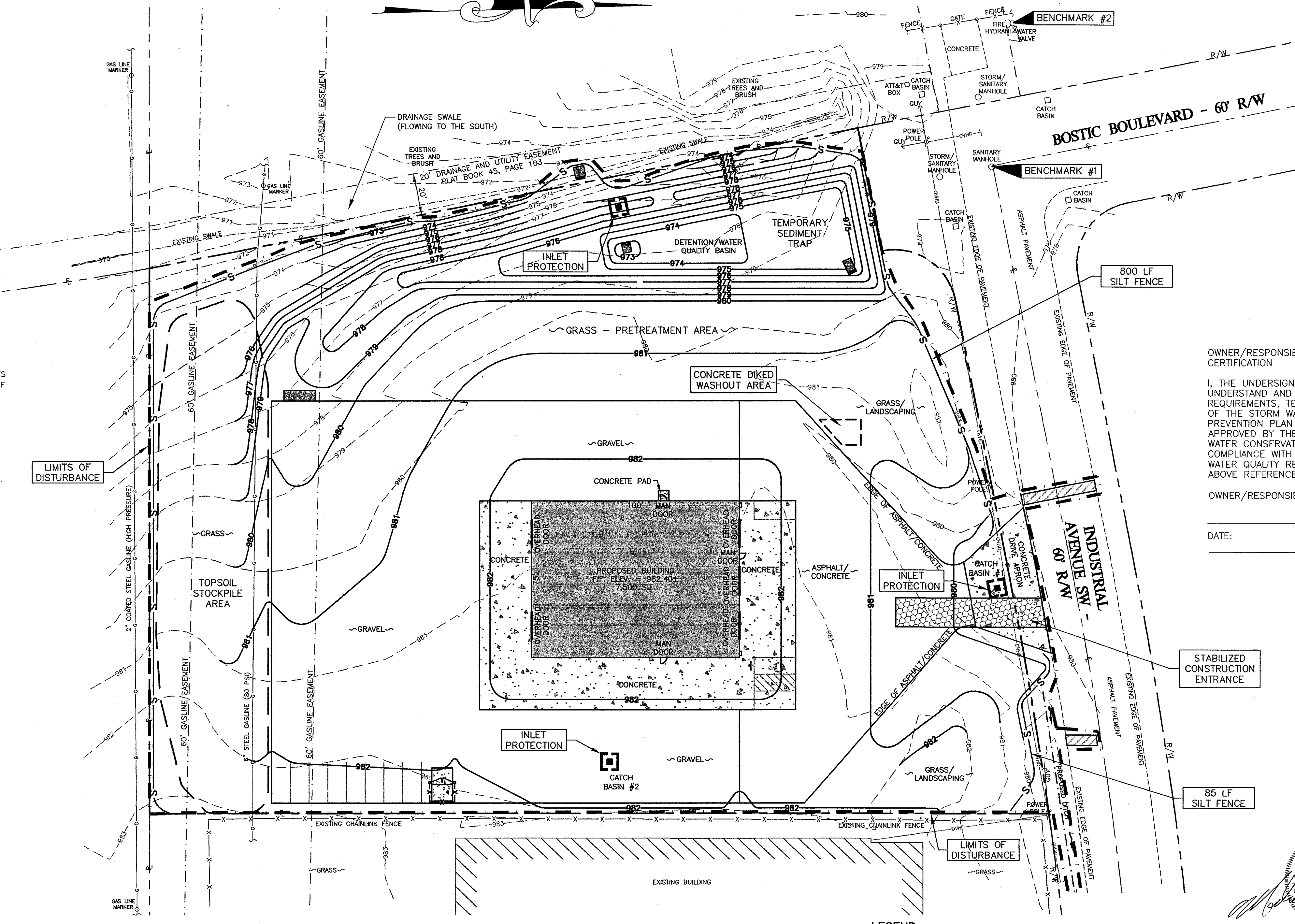
STABILIZED CONSTRUCTION ENTRANCE DETAIL
NOT TO SCALE



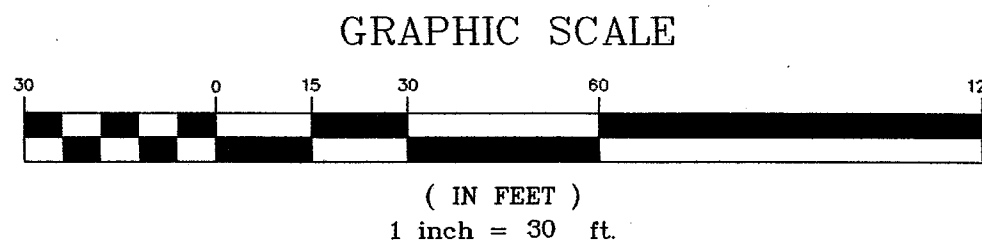
SILT FENCE DETAIL
NOT TO SCALE



INLET PROTECTION DETAIL
NOT TO SCALE



- LEGEND
- S SILT FENCE
 - CONSTRUCTION ENTRANCE
 - INLET PROTECTION
 - LIMITS OF DISTURBANCE

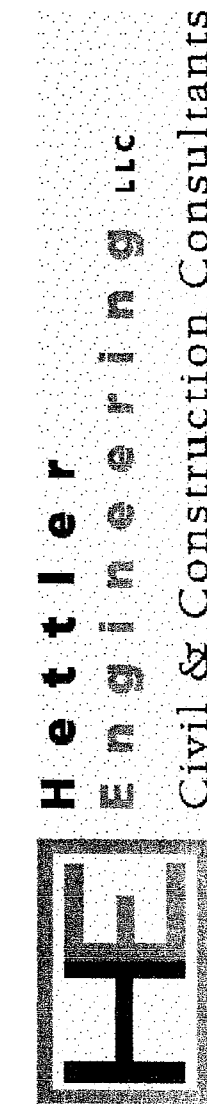


GRAPHIC SCALE

(IN FEET)
1 inch = 30 ft.

NO	DATE	DESCRIPTION	BY

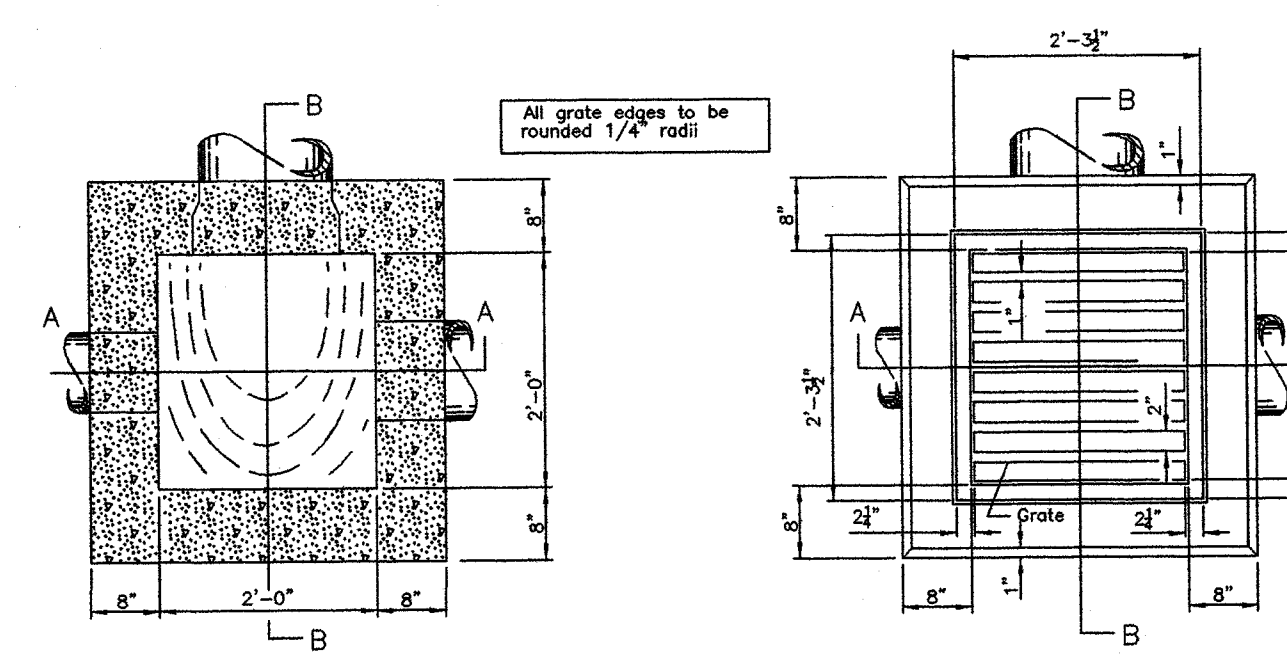
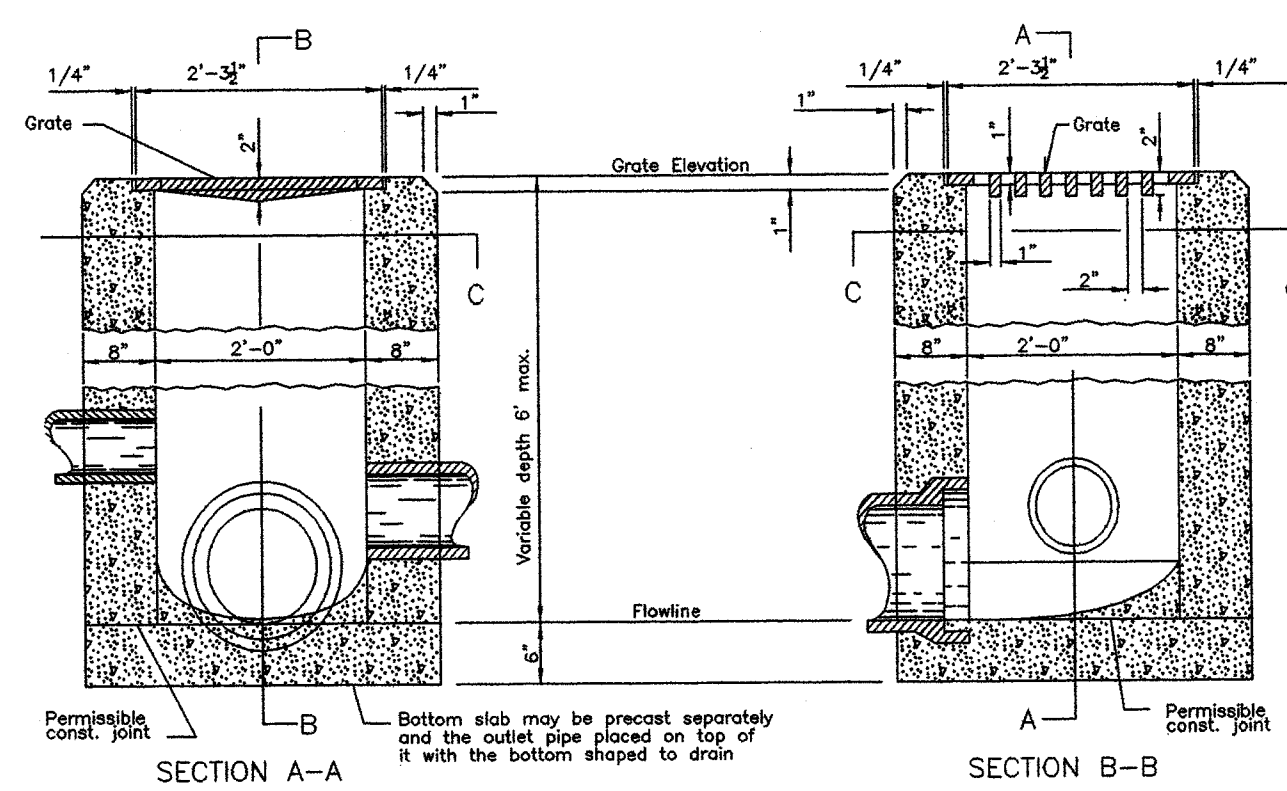
STORM WATER POLLUTION
PREVENTION PLAN



1225 North Main Street - Suite A - North Canton, OH 44720
PH: 330-966-1776 chvling@hettlerengineering.com

MARTIN PALLET, INC.
TRUCK REPAIR FACILITY
OUTLOT 983
CITY OF MASSILLON
STARK COUNTY, OHIO





CATCH BASIN No. 2-2B
NOT TO SCALE

NOTES

GRATE: The design shall be essentially the same and equally as strong as the one shown (see construction information table), or meet the requirements of CMS 711.14. Grate openings and dimensions shall not differ from those shown unless otherwise shown in the plans.

Bicycle safe grates shall be required.

Grate safe grates shall be Nether No. R-4522-C or East Jordan No. 5110 Type M3 or approved equal.

As of January 1, 2003, the following text shall be cast into the top of the grate:

"DUMP NO WASTE" and "DRAINS TO WATERWAY"

Text shall be printed in bold capital letters with a minimum height of 1/2". "WATERWAY" may be substituted with "STREAM", "RIVER", "LAKE", etc. Actual placement and logo may vary per manufacturer.

WALLS: Brick or cast-in-place walls have a nominal thickness of 8". Precast walls shall have a minimum thickness of 6" and be reinforced sufficiently to permit shaping and handling without damage.

CONCRETE: Cast-in-place concrete is to be Class C. All precast concrete shall meet the requirements of CMS 706.13 and be marked with the catch basin number.

PRECAST BASE: If a precast base is used, it shall be set deep enough so that the top can be placed on the base to provide the grate elevation specified in the plans. Layers of brick shall not be used to adjust the top elevation.

LOCATION AND ELEVATION: When given on the plans, location and elevation are at the top center of the grate. When side openings are provided, the elevation shall be at the flow line of the side inlet.

MINIMUM DEPTH: The minimum depth for CB No. 2-2B shall be the O.D. of the outlet pipe plus 1".

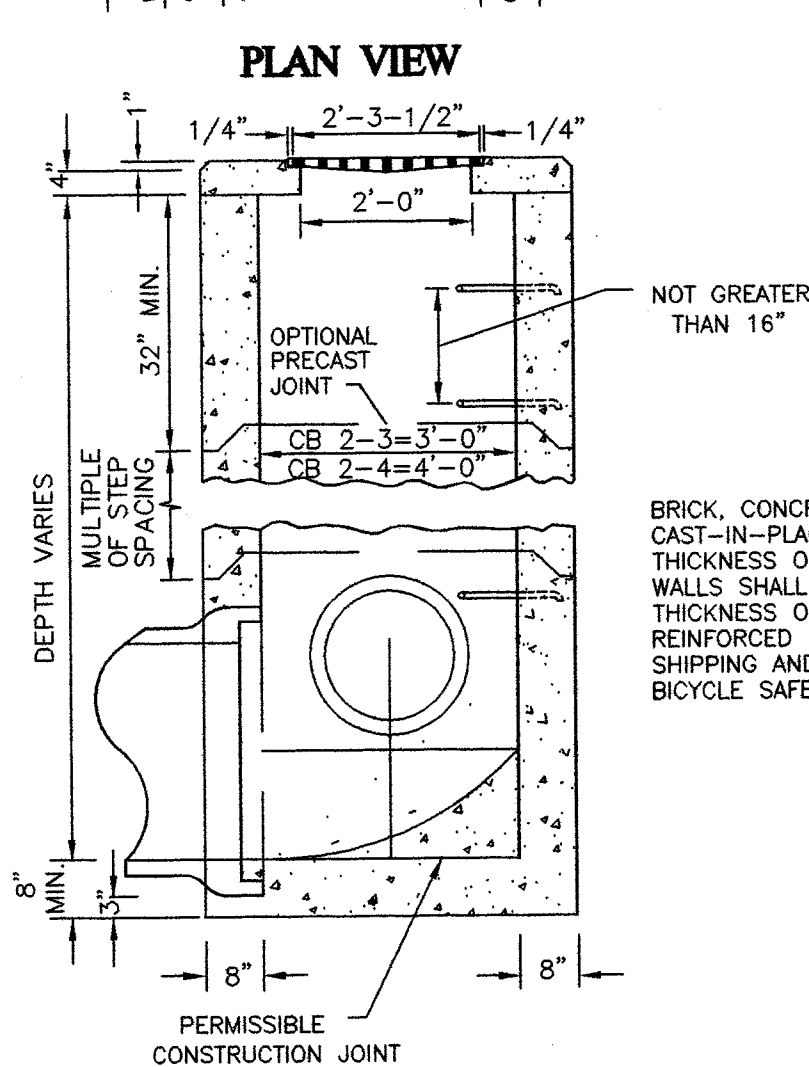
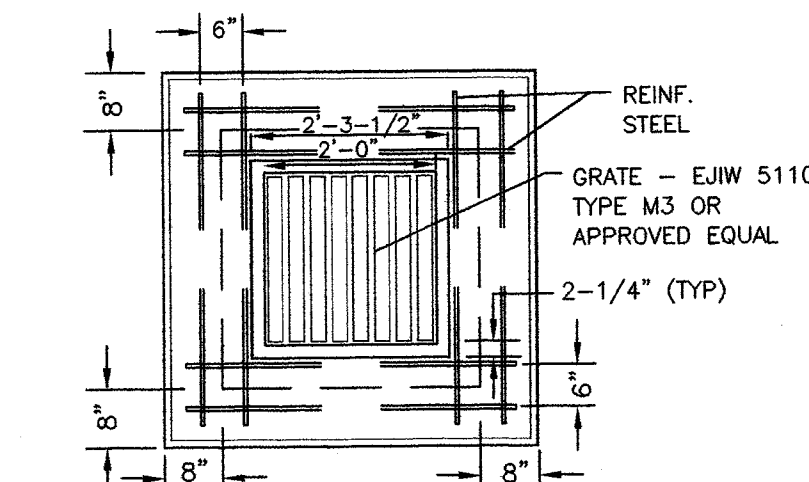
2-2B GRATE ELEVATION: Grate elevation is to be placed 4" to 6" below normal ditch returning to normal 10' to 15' each side of inlet.

OPENINGS: Pipe openings shall be the O.D. of the pipe being supplied plus 2" when fabricated or field cut. The interstitial space shall be filled with grout per CMS 501.

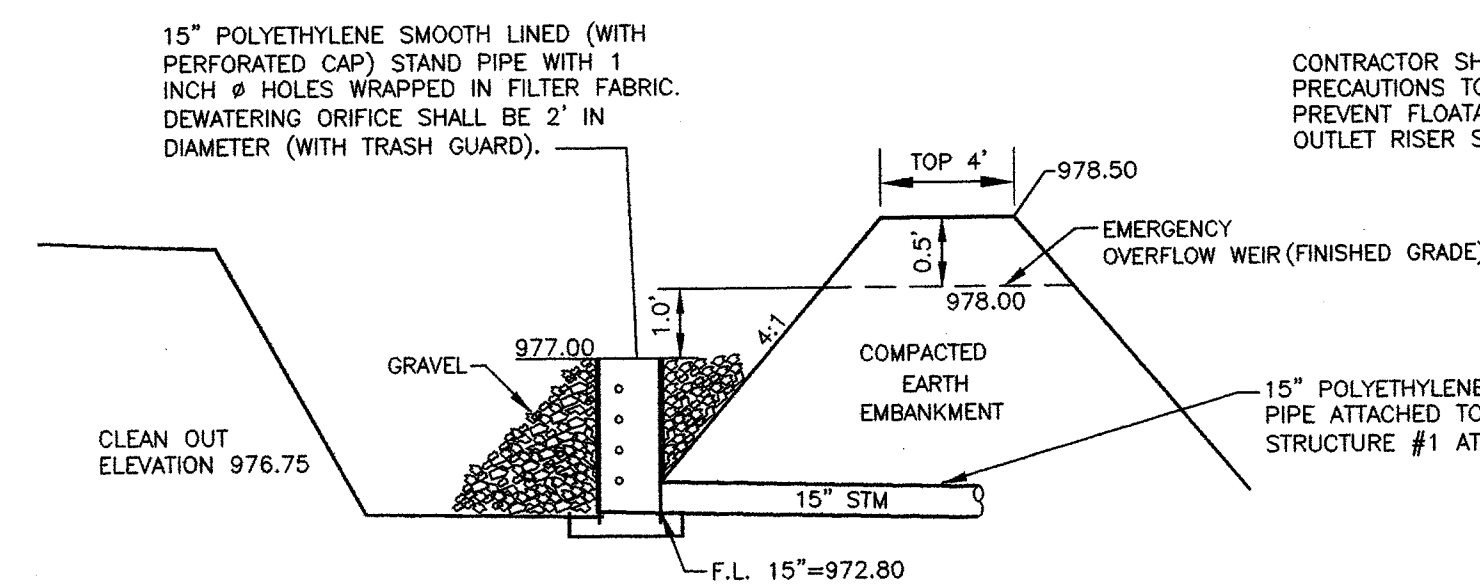
PAYMENT: All materials and labor, including excavation and backfilling, shall be paid for under Item 624 - Catch Basin, No. 2-2B.

CONSTRUCTION INFORMATION
Minimum weight of grate, 120 lbs.

CATCH BASIN OUTLET PIPE SIZE
2-2A 12" to 21"
2-2B 12" to 21"



STANDARD NO. 2-3 & 2-4 CATCH BASINS
NOT TO SCALE



SEDIMENT TRAP CROSS SECTION DETAIL
NOT TO SCALE

CONTRACTOR SHALL TAKE ALL NECESSARY PRECAUTIONS TO PROPERLY SECURE AND PREVENT FLOATATION OF THE SEDIMENT TRAP OUTLET RISER STRUCTURE.

REFER TO PAVEMENT REPLACEMENT DETAIL FOR ADDITIONAL INFORMATION.

IF MATERIAL MEETING THE REQUIREMENTS FOR ODOT TYPE 2 GRANULAR MATERIAL (DOT 703.11) IS USED FOR BACKFILL OF TYPE B CONDUITS (ABOVE THE REQUIRED BEDDING MATERIAL) THEN THE CONTRACTOR MUST PROVIDE AND INSTALL AN APPROVED GEOTECHNICAL FABRIC BETWEEN THE BEDDING AND THE BACKFILL TO PREVENT MIGRATION OF THE GRANULAR BACKFILL INTO THE BEDDING MATERIAL.

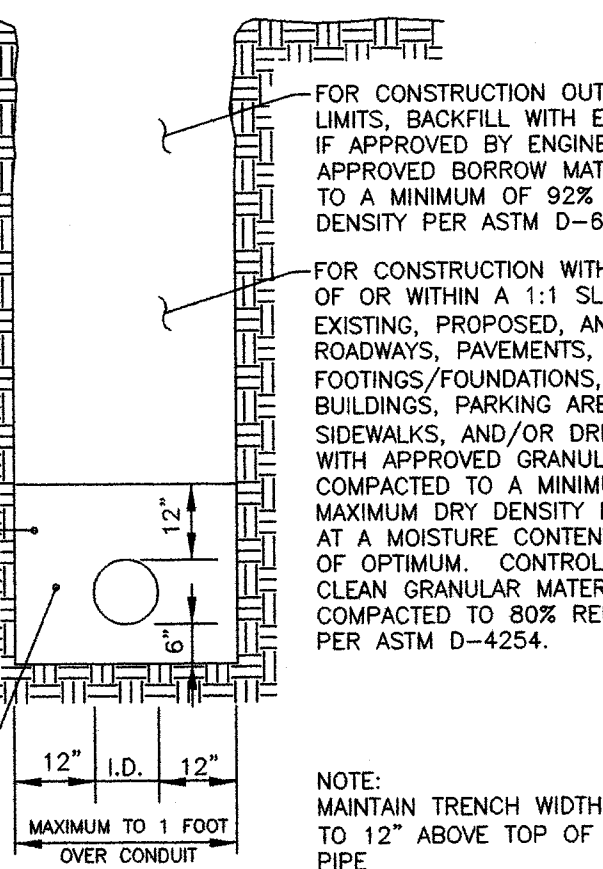
BEDDING: COMPACTED ANGULAR, CRUSHED STONE OR GRAVEL (#57 LIMESTONE OR APPROVED EQUAL, NO SLAG) FOR POLYETHYLENE/HDPE AND PVC STORM SEWERS, SANITARY SEWERS, AND FORCE MAINS, CLASS 1 BEDDING AS PER ASTM D2321-72.

COMPACTED GRANULAR MATERIAL (NO SLAG) FOR R.C.P. STORM SEWERS. BEDDING MAY BE TERMINATED AT THE SPRING LINE OF R.C.P. STORM SEWERS.

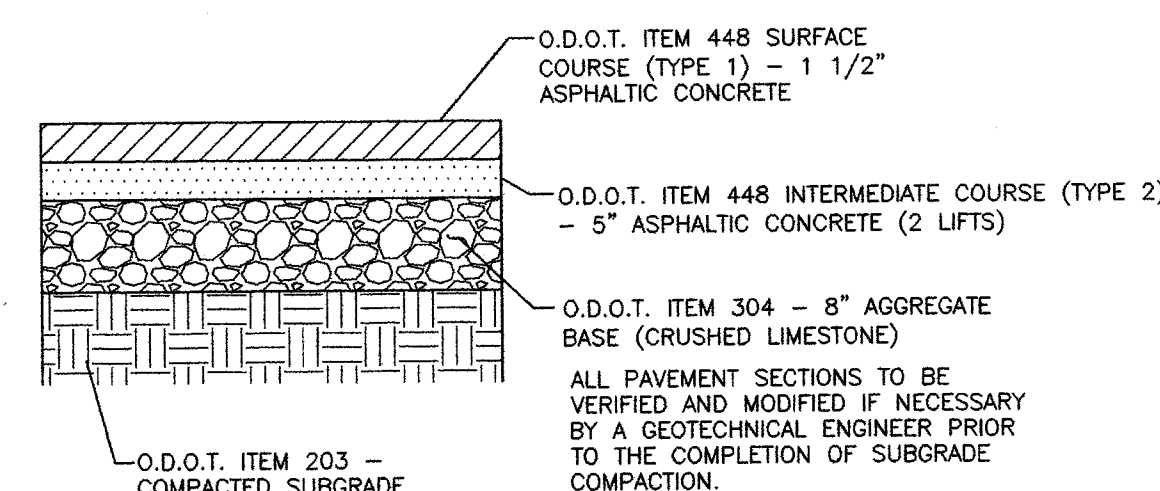
APPROVED COMPACTED GRANULAR MATERIAL PER ANSI/AWWA C150/A21.50 FOR D.I.P. WATERLINE, LAYING CONDITION TYPE 5.

NOTE: MAINTAIN TRENCH WIDTH TO 12" ABOVE TOP OF PIPE

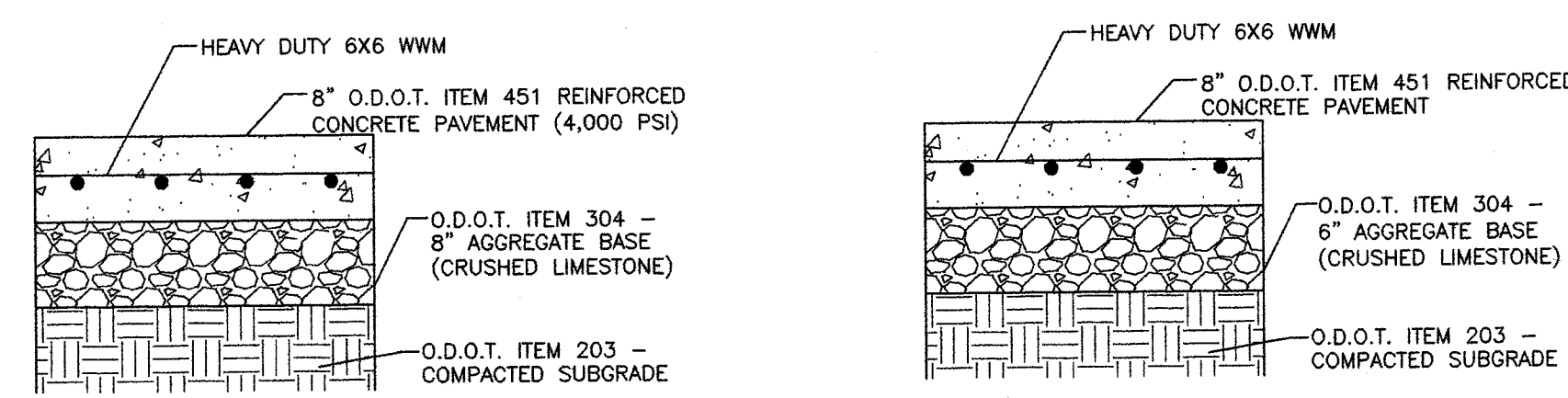
PIPE BEDDING AND BACKFILL DETAIL
NOT TO SCALE



PIPE BEDDING AND BACKFILL DETAIL
NOT TO SCALE



PARKING LOT ASPHALT PAVEMENT SECTION
NOT TO SCALE



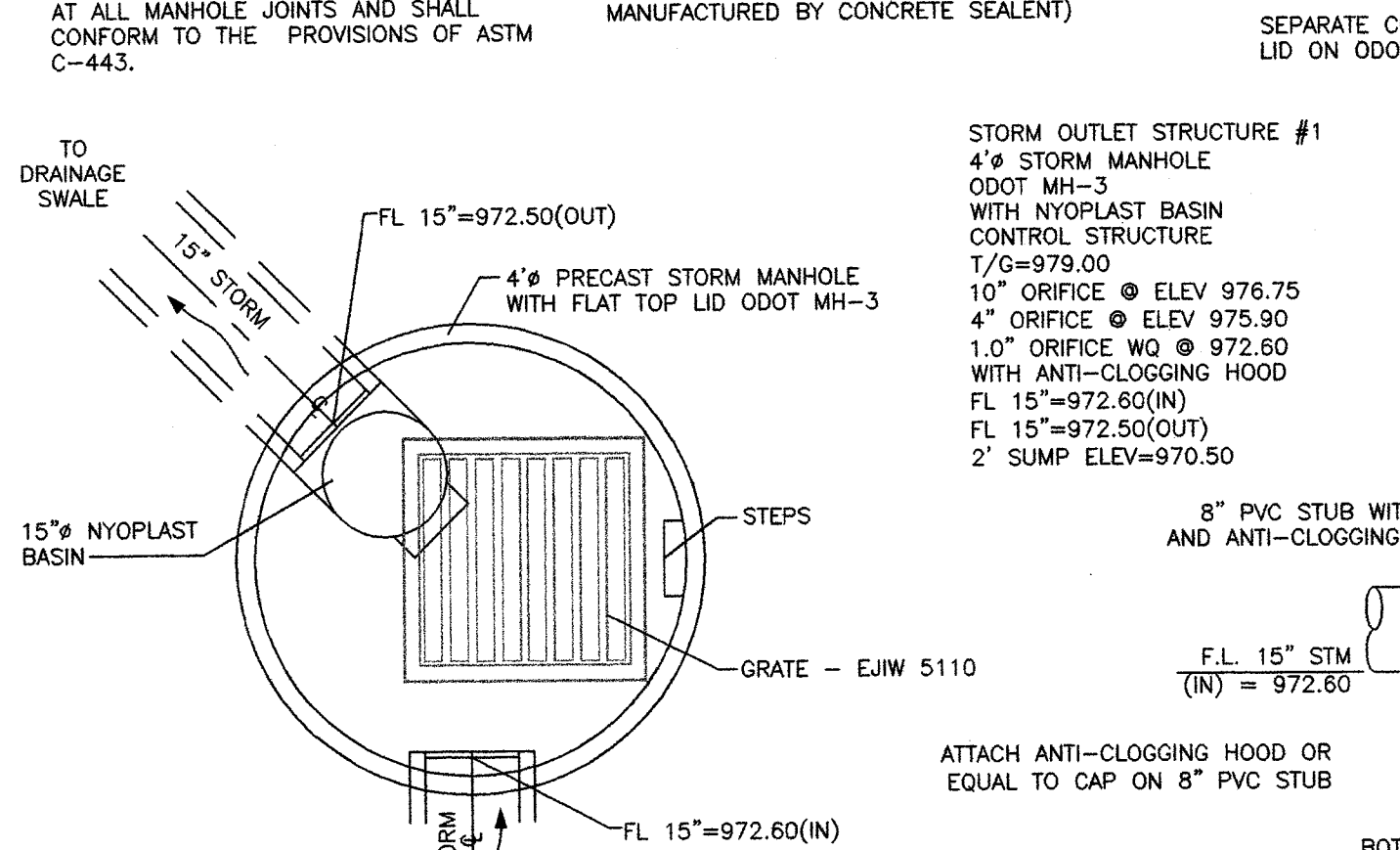
DRIVE APRON SECTION
NOT TO SCALE

CONCRETE PAVEMENT/PAD SECTION
NOT TO SCALE

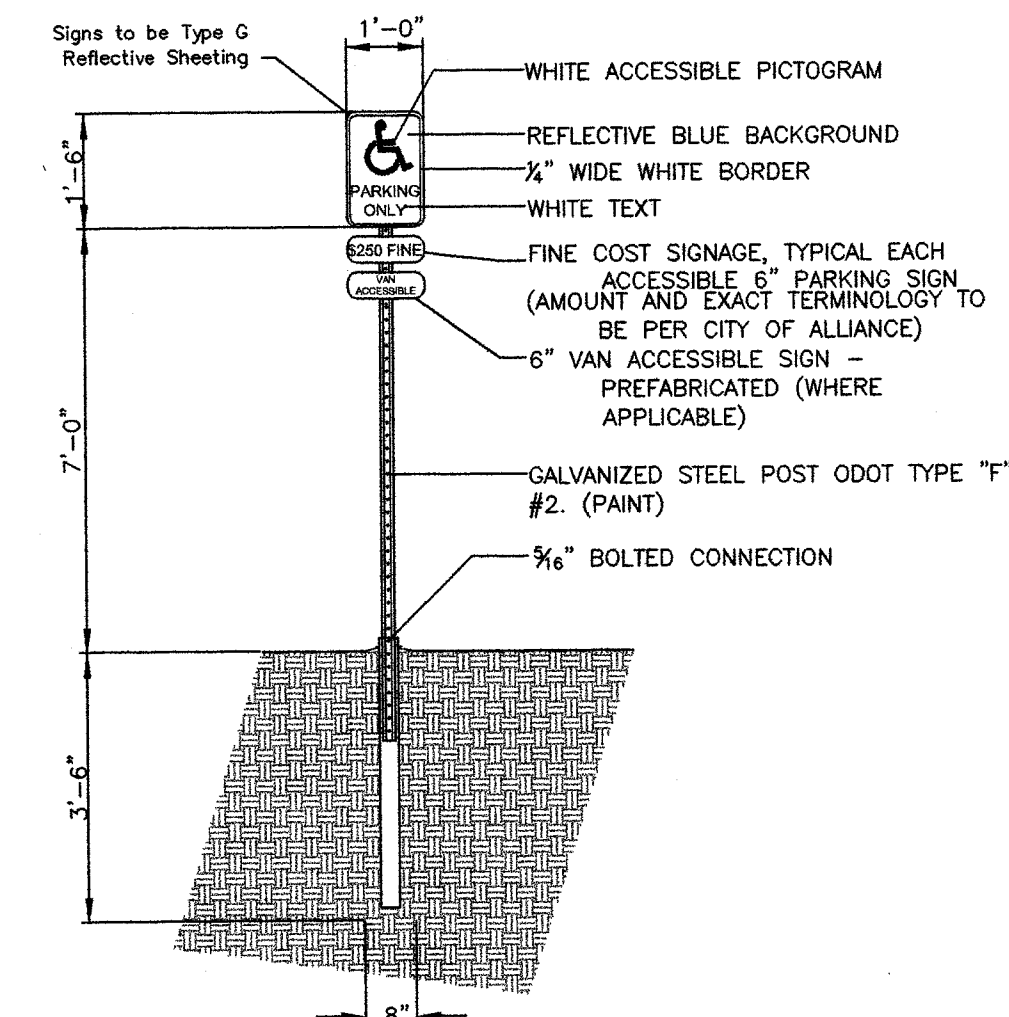
ALL PAVEMENT SECTIONS TO BE REVIEWED/VERIFIED BY A GEOTECHNICAL ENGINEER PRIOR TO COMPLETION OF SUBGRADE PREPARATION.

MANHOLE SECTIONS SHALL CONFORM TO THE PROVISIONS OF ASTM C-478. O-RING GASKETS SHALL BE PROVIDED AT ALL MANHOLE JOINTS AND SHALL CONFORM TO THE PROVISIONS OF ASTM C-443.

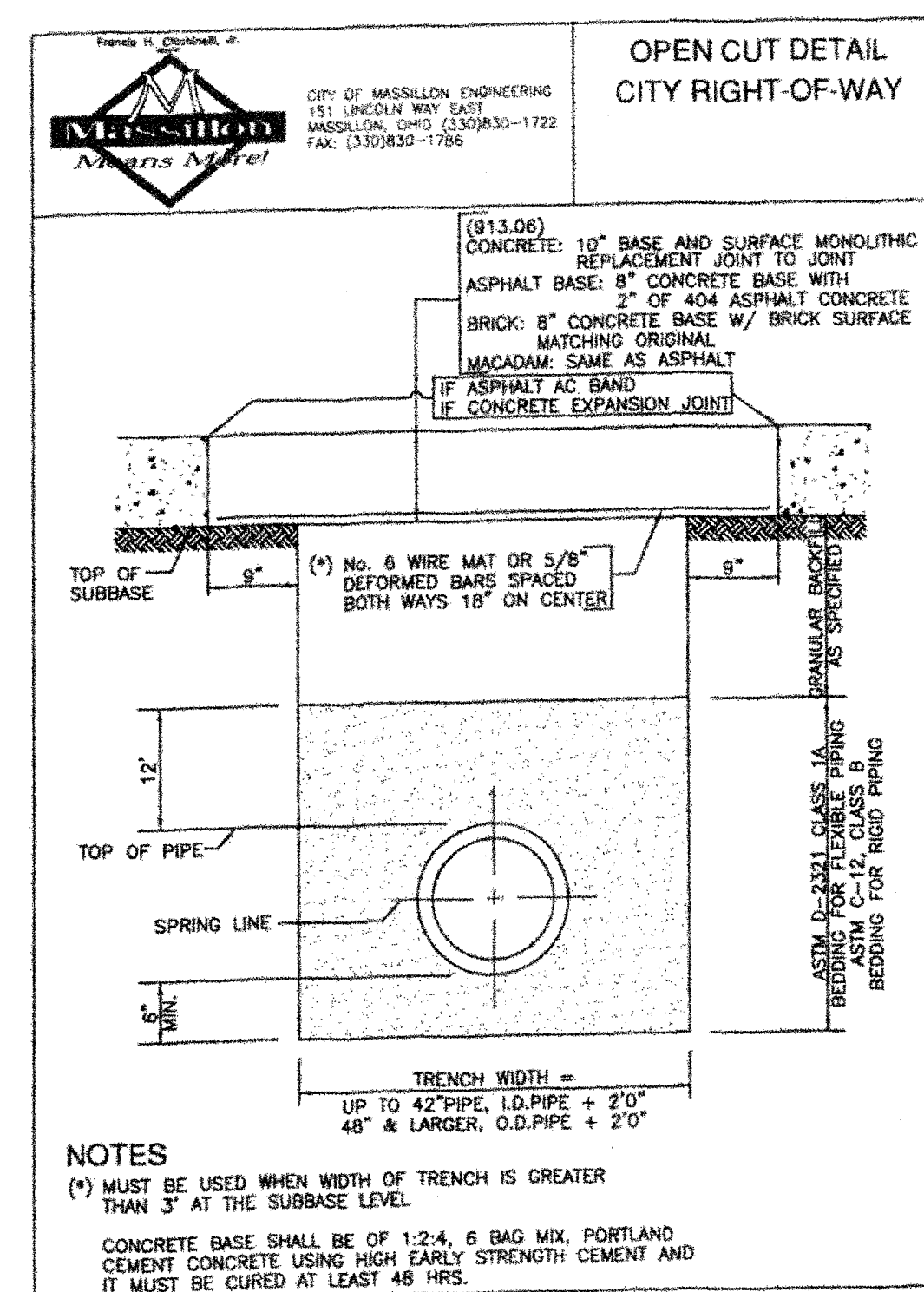
ALL MANHOLE JOINTS SHALL BE SEALED WITH A FLEXIBLE BUTYL RESIN SEALANT - CONSEAL OR APPROVED EQUAL (AS MANUFACTURED BY CONCRETE SEALANT)



STORM OUTLET STRUCTURE NO. 1
NOT TO SCALE



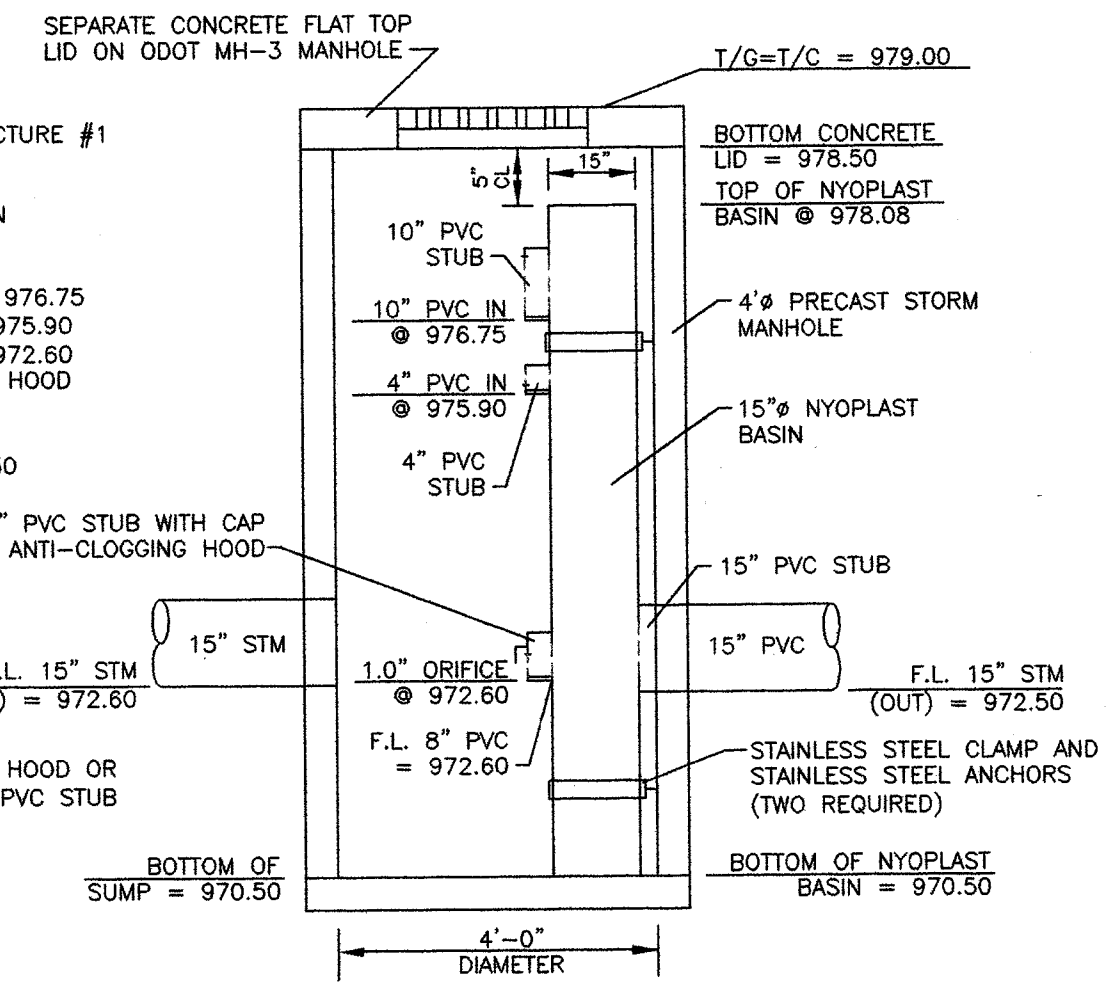
TYPICAL HANDICAP SIGN DATA
NOT TO SCALE



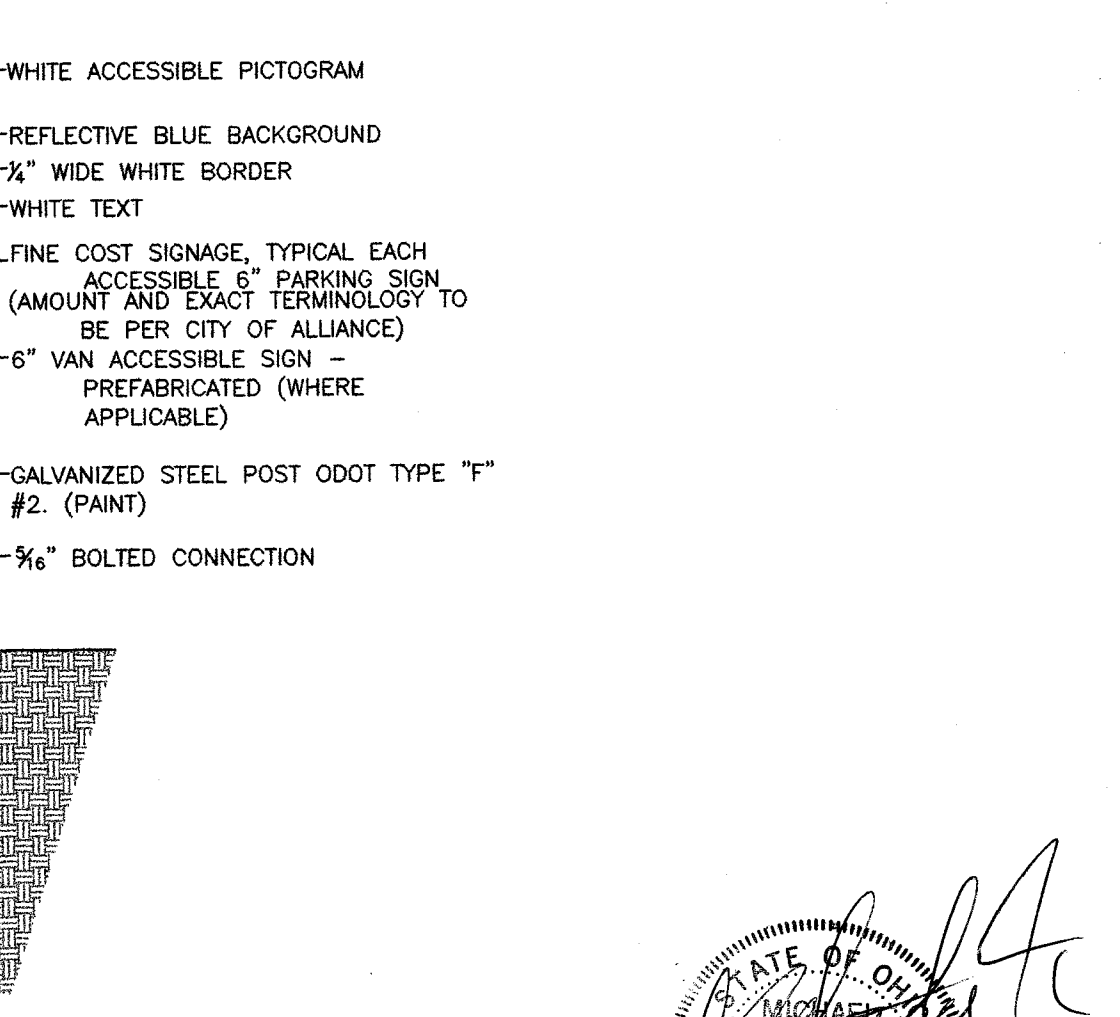
NOTES

(*) MUST BE USED WHEN WIDTH OF TRENCH IS GREATER THAN 3' AT THE SUBBASE LEVEL

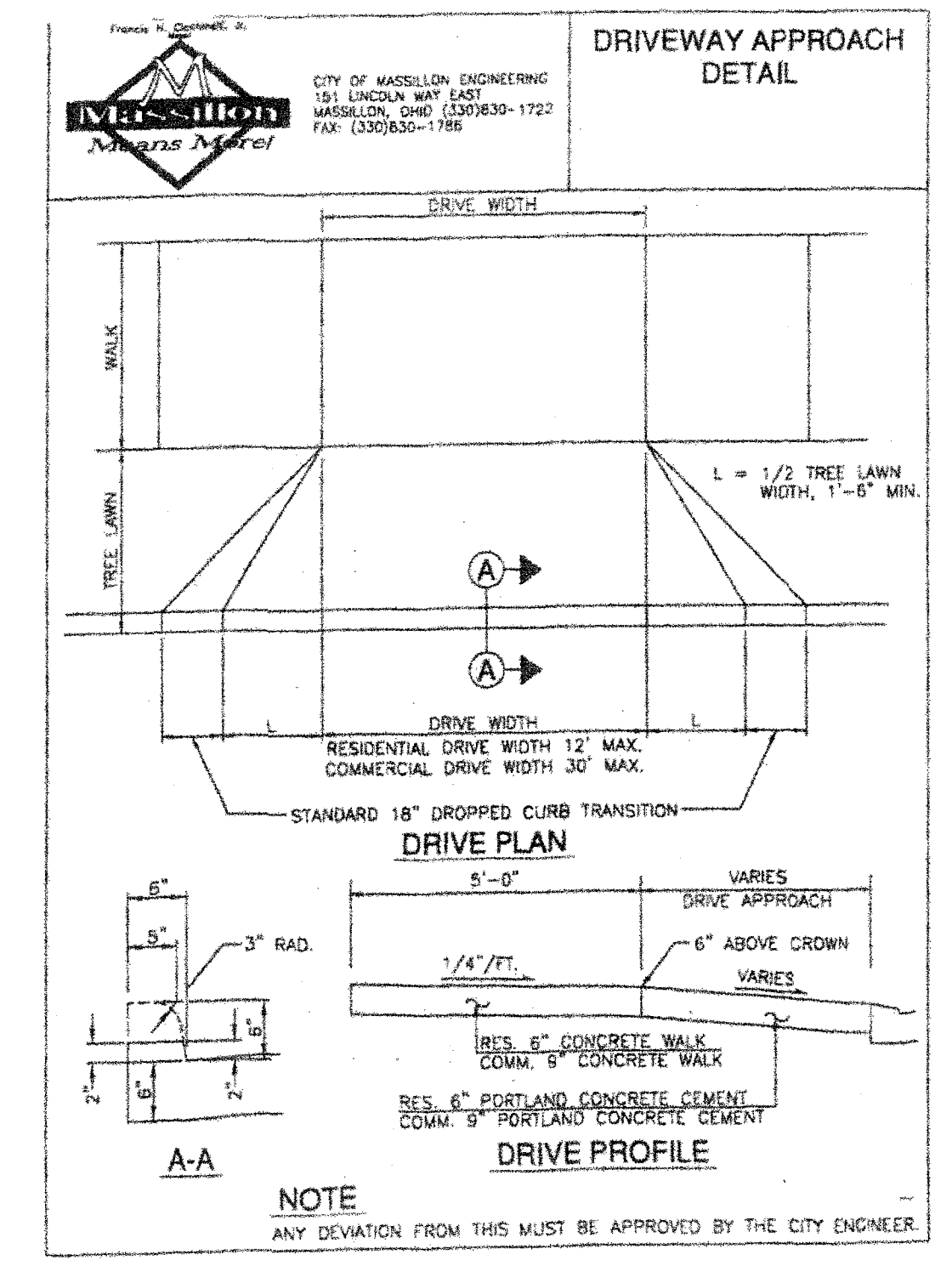
CONCRETE BASE SHALL BE OF 1:2:4, 6 BAG MIX, PORTLAND CEMENT CONCRETE USING HIGH EARLY STRENGTH CEMENT AND IT MUST BE CURED AT LEAST 48 HRS.



STORM OUTLET STRUCTURE NO. 1
NOT TO SCALE



TYPICAL HANDICAP SIGN DATA
NOT TO SCALE



DRIVEWAY APPROACH DETAIL
NOT TO SCALE

DETAILS

Hettler Engineering LLC
Civil & Construction Consultants
1225 North Main Street • Suite A • North Canton, OH 44720
PH: 330-966-1776 • cchleng@hettlerengineering.com

MARTIN PALLET, INC.
TRUCK REPAIR FACILITY
OUTLOT 983
CITY OF MASSILLON
STARK COUNTY, OHIO