

⊠	EX. MONUMENT BOX
⊡	PROP. MONUMENT BOX
•	EX. MONUMENT (FOUND)
•	1/2" BAR W/ H&A CAP (SET)
•	BENCHMARK (AS NOTED)
—	BOUNDARY LINE
—	CENTER LINE
—	LOT LINE
—	PROPERTY LINE
R/W	RIGHT OF WAY
()	RECORD BEARINGS & DIST.
E.O.P.	EDGE OF PAVEMENT
F.F.	FINISH FLOOR
— — —	EX. CONTOUR LINE
— — —	PROP. CONTOUR LINE
-980-	CONTOUR LABEL
⊙	BOLLARD
* * * *	FENCE (AS NOTED)
—	GUARDRAIL
□	MAILBOX
+++++	RAIL ROAD
+	SIGN
⊗	DECIDIOUS TREE (AS NOTED)
⊗	EVERGREEN TREE (AS NOTED)
⊗	BUSH (AS NOTED)
⊕	SOIL BORING
⊕	POLE ANCHOR
⊕	GUY POLE
⊕	GENERAL POLE
⊕	FLAG POLE
⊕	LIGHT POLE
⊕	LIGHT & POWER POLE
⊕	LIGHT, POWER, TELE, TV POLE
⊕	POWER POLE
⊕	TELEPHONE POLE
⊕	TELEPHONE, LIGHT POLE
⊕	TELEPHONE, POWER POLE
⊕	PULL BOX
⊕	TRAFFIC CONTROL BOX
⊕	POLE W/ PED. SIGNAL
⊕	POLE W/ TRAFFIC SIGNAL
-OE-	OVERHEAD ELECTRIC LINE
-UE-	UNDERGROUND ELECTRIC LINE
⊕	ELECTRIC LINE MARKER
⊕	ELECTRIC BOX
⊕	ELECTRIC MANHOLE
⊕	ELECTRIC METER
-FO-	FIBER OPTIC LINE
⊕	FIBER OPTIC LINE MARKER

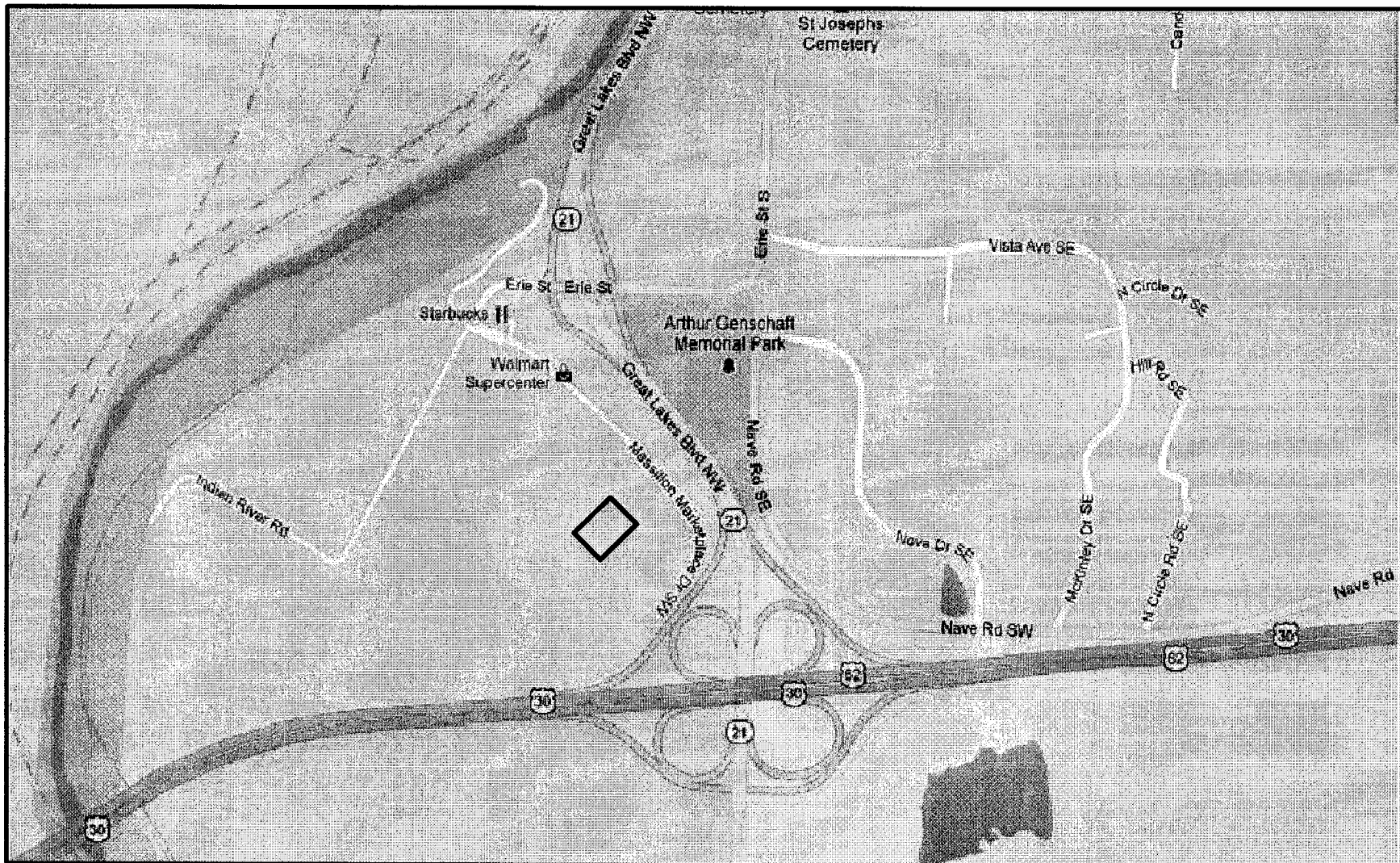
LEGEND

-G-	GAS LINE
⊕	GAS LINE MARKER
⊕	GAS METER
⊕	GAS VALVE
⊕	GAS TANK
⊕	GAS WELL
-S-	SANITARY SEWER LINE
⊕	SANITARY SEWER LINE MARKER
⊕	SANITARY M.H./ C.O.
M.H.	MANHOLE
C.O.	CLEAN OUT
-ST-	STORM SEWER LINE
⊕	STORM SEWER LINE MARKER
⊕	STORM CATCH BASIN
⊕	STORM CURB INLET
⊕	STORM MANHOLE
⊕	STORM DOWNSOUT
⊕	STORM HEADWALL
C.B.	CATCH BASIN
C.I.	CURB INLET
T/G	TOP OF GRATE
T/C	TOP OF COVER
T/CU	TOP OF CURB
⊕	FLOWLINE
Y.D.	YARD DRAIN
D.S.	DOWN SPOUT
-OT-	OVERHEAD TELEPHONE LINE
-UT-	UNDERGROUND TELEPHONE LINE
⊕	TELEPHONE LINE MARKER
⊕	TELEPHONE BOX
⊕	TELEPHONE MANHOLE
-OTV-	OVERHEAD TV LINE
-UTV-	UNDERGROUND TV LINE
⊕	TV LINE MARKER
⊕	TV/CABLE BOX
⊕	TV/CABLE MANHOLE
-W-	WATER LINE
⊕	WATER LINE MARKER
⊕	WATER MANHOLE
⊕	WATER METER
⊕	WATER VALVE
⊕	WATER SPRINKLER
⊕	FIRE HYDRANT
⊕	MONITORING WELL

BUILDING ADDITION AND INTERIOR UPFIT

LOCATED IN OUTLOT 866 IN THE CITY OF MASSILLON
STARK COUNTY, OHIO
FEBRUARY 2012

VICINITY MAP
N.T.S.



ENGINEER/ SURVEYOR

HAMMONTREE & ASSOCIATES, LTD
5233 STONEHAM RD.
NORTH CANTON, OH 44720

330-499-8817
330-499-0149 (FAX)

ATTN.- JENNIFER SCHUMACHER, P.E., LEED-AP

OWNER/DEVELOPER

DEVILLE THF MASSILLON DEVELOPMENTS, LLC
3951 CONVENIENCE CIRCLE, SUITE 301
CANTON, OH 44718

330-493-9131
330-492-3788 (FAX)

INDEX OF SHEETS

COVER SHEET	C-1
EXISTING SITE/ DEMOLITION PLAN	C-2
OVERALL SITE PLAN OF SHOPPING PLAZA	C-3
SITE PLAN	C-4
SITE UTILITY PLAN	C-5
SITE GRADING & EROSION CONTROL PLAN	C-6
SITE NOTES & DETAILS	C-7

APPROVALS

SITE PLAN APPROVED BY THE CITY OF MASSILLON ENGINEER
THIS 11th DAY OF APRIL, 2012

KEITH A. DYLEWSKI, P.E.

ONLY APPROVED PLANS SIGNED BY THE
CITY ENGINEER ARE TO BE USED FOR
CONSTRUCTION

BENCHMARK #1:
CHIZZLED "X" ON NW BOLT OF
FIRE HYDRANT (SHOWN ON PLANS)

ELEV. = 988.01

ODOT STANDARD DRAWINGS

SCD NUM.	ITEM	DATE
CB-1.1	CATCH BASINS (NO'S 2-2 A & B)	7-15-05
HW-2.1	HALF HEIGHT HEADWALL	1/30/07

DRAWINGS FROM ODOT STANDARD ROADWAY
CONSTRUCTION DRAWINGS MANUAL, DATED 1-21-11.

SANITARY- CITY OF MASSILLON

ONE JAMES DUNCAN PLAZA S.E
MASSILLON, OH 44646

330-830-1705
330-830-2686 (FAX)

WATER- AQUA OHIO

870 3rd STREET N.W.
MASSILLON, OH 44647

330-832-5764 Ext. 205
330-832-5770 (FAX)

ELECTRIC- OHIO EDISON COMPANY

2600 SOUTH ERIE
MASSILLON, OH 44646

330-830-7056
330-830-7054 (FAX)

TELEPHONE- SBC/AMERITECH

50 W. BOWERY ST.
ARKON, OH 44308

330-384-8057
384-8879 (FAX)

CABLE- MASSILLON CABLE TV

814 CABLE COURT N.W.
MASSILLON, OH 44648-0814

330-833-4134
330-833-7522 (FAX)

GAS- DOMINION EAST

4725 SOUTHWAY STREET, S.W.
CANTON, OH 44706-1936

330-478-1700
330-478-3157 (FAX)

OHIO UTILITIES PROTECTION SERVICE

CALL 8-1-1 OR 1-800-362-2764 BEFORE YOU DIG



COVER SHEET
BUILDING ADDITION & INTERIOR UPFIT
FOR: MARSHALL STORE
LOCATED IN THE CITY OF MASSILLON
STARK COUNTY, OHIO

C-1

HAMMONTREE & ASSOCIATES, LTD.
ENGINEERS, PLANNERS, SURVEYORS
CANTON-ARKON-PITTSBURGH
5233 STONEHAM ROAD NORTH CANTON, OHIO 44720
CANTON: (330)499-8817 AKRON: (330)633-7274
TOLL FREE: 1-800-394-8817 FAX: (330)499-0149
www.hammontree-engineers.com

- PARTIAL TOPO SURVEY BY HAMMONTREE & ASSOCIATES FEB. 2012

DEVILLE THF MASSILLON
DEVELOPMENT LLC
O.L. 866
PN#: 618691
1.84 AC.

DEVILLE THF MASSILLON
DEVELOPMENT LLC
O.L. 865
PN#: 618159
3.10 AC.

BIG LOTS
S.F. = 27843
F.F. = 986.52'

EX. STM. M.H.
T/G 985.35'
┌ 60" (SW)-RCP 977.11'
┌ 36" (E)-RCP 977.22'
┌ (N)-RCP 977.56'

DEVILLE THF MASSILLON
DEVELOPMENT LLC
O.L. 866
PN#: 618691
1.84 AC.

TRANSFORMER TO BE
RELOCATED
(SEE ELECTRICAL
PLANS)

EXIST BLDG
S.F. = 13,070
F.F. = 986.52'
(TO REMAIN)


LOWE'S
S.F. = 135,197

DEVILLE THF MASSILLON
DEVELOPMENT LLC.
O.L. 866
PN#: 61890
12.09 AC.

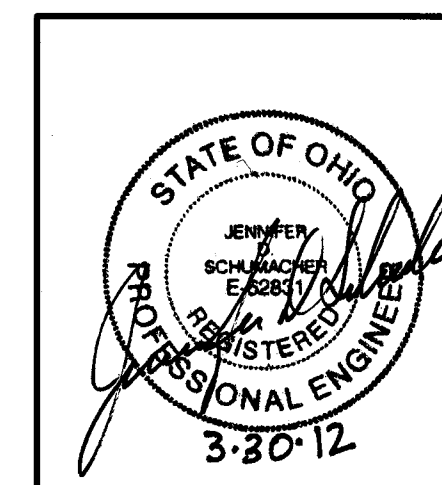
DEMOLITION NOTES:

1. THE CONTRACTOR IS RESPONSIBLE FOR THE DEMOLITION, REMOVAL, AND DISPOSAL (IN A LOCATION APPROVED BY THE GOVERNING AUTHORITIES) OF ALL STRUCTURES, SO THAT THE IMPROVEMENTS SHOWN ON THE REMAINING PLANS CAN BE CONSTRUCTED. ALL FACILITIES TO BE REMOVED SHALL BE UNDERCUT TO SUITABLE MATERIAL AND BROUGHT TO GRADE WITH SUITABLE COMPACTED FILL MATERIAL PER THE SPECIFICATIONS OUTLINED IN THESE PLANS OR GEOTECHNICAL REPORT. THE CONTRACTOR IS RESPONSIBLE FOR OBTAINING ALL PERMITS NEEDED FOR DEMOLITION AND DISPOSAL.
2. THE CONTRACTOR SHALL COORDINATE WITH THE RESPECTIVE UTILITY COMPANIES PRIOR TO THE REMOVAL AND/OR RELOCATION OF UTILITIES. ALL EXISTING UTILITY CONNECTIONS ARE TO BE ABANDONED AS DIRECTED BY THE RESPECTIVE UTILITY OWNER.
3. THE CONTRACTOR SHALL COORDINATE WITH THE UTILITY COMPANY CONCERNING PORTIONS OF WORK WHICH MAY BE PERFORMED BY THE UTILITY COMPANY'S FORCES AND ANY FEES WHICH ARE TO BE PAID TO THE UTILITY COMPANY FOR THEIR SERVICES. THE CONTRACTOR IS RESPONSIBLE FOR PAYING ALL FEES AND CHARGES.
4. THE CONTRACTOR SHALL BE RESPONSIBLE FOR THE DISCONNECTION OF UTILITY SERVICES TO THE EXISTING BUILDING(S) PRIOR TO START OF DEMOLITION. EXISTING UTILITY CONNECTIONS TO THE BUILDING ARE NOT SHOWN ON THIS SURVEY.
5. ALL POTENTIALLY HAZARDOUS/TOXIC MATERIALS MUST BE REMOVED FROM THE BUILDING(S) PRIOR TO DEMOLITION. POTENTIALLY HAZARDOUS/TOXIC MATERIALS THAT MUST BE REMOVED INCLUDE, BUT ARE NOT LIMITED TO, FLUORESCENT BULBS AND BALLASTS, MERCURY CONTAINING SWITCHES, ELECTRONIC EQUIPMENT (TELEVISIONS, COMPUTERS, ETC.), REFRIGERANTS, BATTERIES, CLEANING SUPPLIES, AND SMALL CONTAINERS OF PAINT, SOLVENTS, OR OILS.
6. IF ANY PAVEMENT IS DAMAGED OUTSIDE THE SAW-CUT LIMITS, THE CONTRACTOR IS RESPONSIBLE FOR THE REMOVAL AND REPAIR OF THAT PAVEMENT.
7. THE CONTRACTOR SHALL MAINTAIN A WELL-DRAINED SITE, FREE OF STANDING WATER, DURING ALL PHASES OF CONSTRUCTION.
8. THE CONTRACTOR IS RESPONSIBLE FOR PLACING AND MAINTAINING CONSTRUCTION FENCE, SIGNS, ETC. TO WARN & KEEP PEOPLE OFF SITE FOR THE DURATION OF THE PROJECT.
9. THE LOCATIONS OF ALL EXISTING UTILITIES SHOWN ON THIS PLAN HAVE BEEN DETERMINED FROM THE BEST INFORMATION AVAILABLE AND ARE GIVEN FOR THE CONVENIENCE OF THE CONTRACTOR. THE ENGINEER ASSUMES NO RESPONSIBILITY FOR THEIR ACCURACY. PRIOR TO THE START OF ANY DEMOLITION OR CONSTRUCTION ACTIVITY, THE CONTRACTOR SHALL BE RESPONSIBLE FOR VERIFYING THE LOCATIONS OF ALL UTILITIES.
10. X= ITEM TO BE REMOVED

0' 10' 20' 40'



SCALE: 1"=20'



HA® HAMMONTREE & ASSOCIATES, LTD.
ENGINEERS, PLANNERS, SURVEYORS
CANTON—AKRON—PITTSBURGH

5233 STONEHAM ROAD NORTH CANTON, OHIO 44720
CANTON: (330)499-8817 AKRON: (330)633-7274
TOLL FREE: 1-800-394-8817 FAX: (330)499-0149
www.hammontree-engineers.com

REV. BY: _____	DATE: _____	DESC.: _____
REV. BY: _____	DATE: _____	DESC.: _____
REV. BY: _____	DATE: _____	DESC.: _____
REV. BY: _____	DATE: _____	DESC.: _____
REV. BY: _____	JDS DATE: <u>3/28/12</u>	DESC.: ADDED DOWNSPOUT CONNECTIONS

IN: K:\CITY\WATER\CON\WATER\2012-03-03_MARCH\W.L. JUNE

DESIGN BY: JDS FLD BK: 49B
 DRWN BY: DMM BK PG: 70
 CHKD BY: JDS CRW CHF: MAW
 RWMD BY: JDS CPYRGHT: 2012
 DATE: 02/24/12 TAB: EXIST

SCALES
HORIZ: 1"=20'
VERT:
CONTOUR INT: 1'

EXISTING SITE / DEMOLITION PLAN

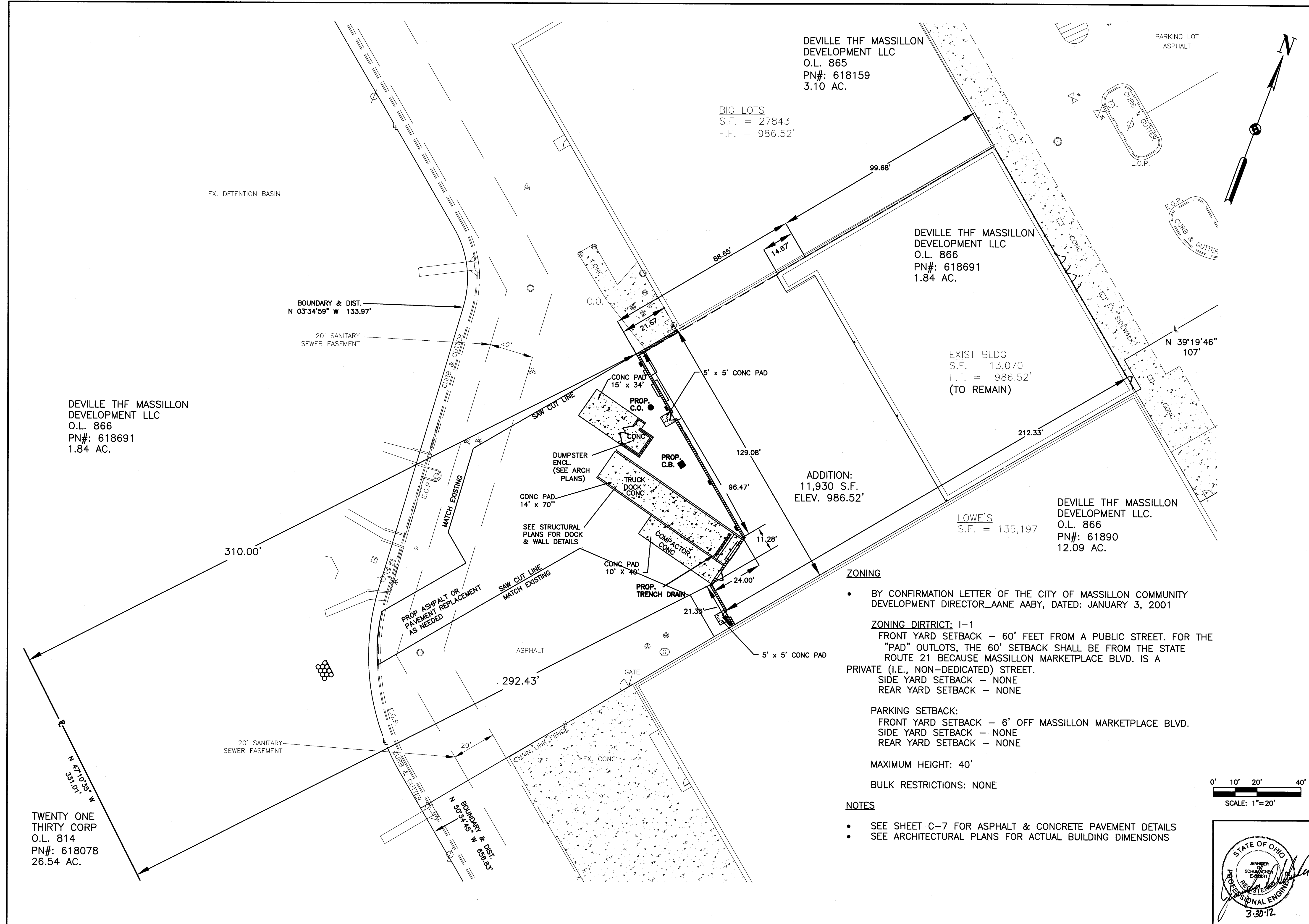
ING ADDITION & INTERIOR UPFIT

FOR: MARSHALL STORE

LOCATED IN THE CITY OF MASSILLON

STARK COUNTY, OHIO

C-2



HAMMONTREE & ASSOCIATES, LTD.
ENGINEERS, PLANNERS, SURVEYORS
CANTON - AKRON - PITTSBURGH
5233 STONEHAM ROAD NORTH CANTON, OHIO 44720
CANTON: (330)499-8817 AKRON: (330)633-7274
TOLL FREE: 1-800-394-8817 FAX: (330)499-0149
www.hammontree-engineers.com

REV.	BY:	DATE:	DESC.:

FLD.	BK:	PG:	CRW.	CHKD.	DATE:	TAB.	SITE
498							

DESIGN BY:	DRWN BY:	CHKD BY:	DATE:
JDS	DM	JDS	02/24/12

SCALES

HORIZ: 1"=20'

VERT:

CONTOUR INT:

SITE PLAN

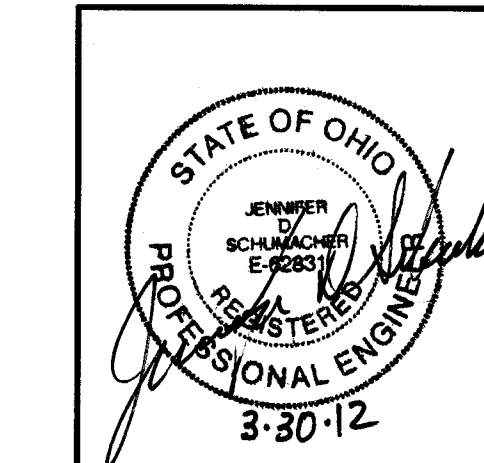
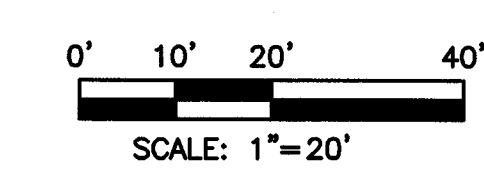
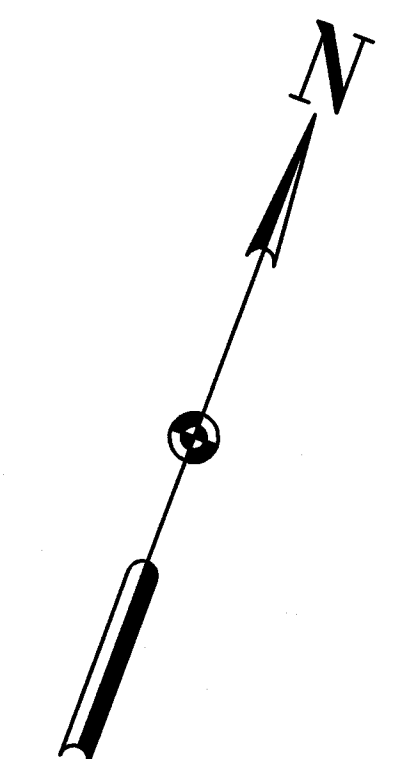
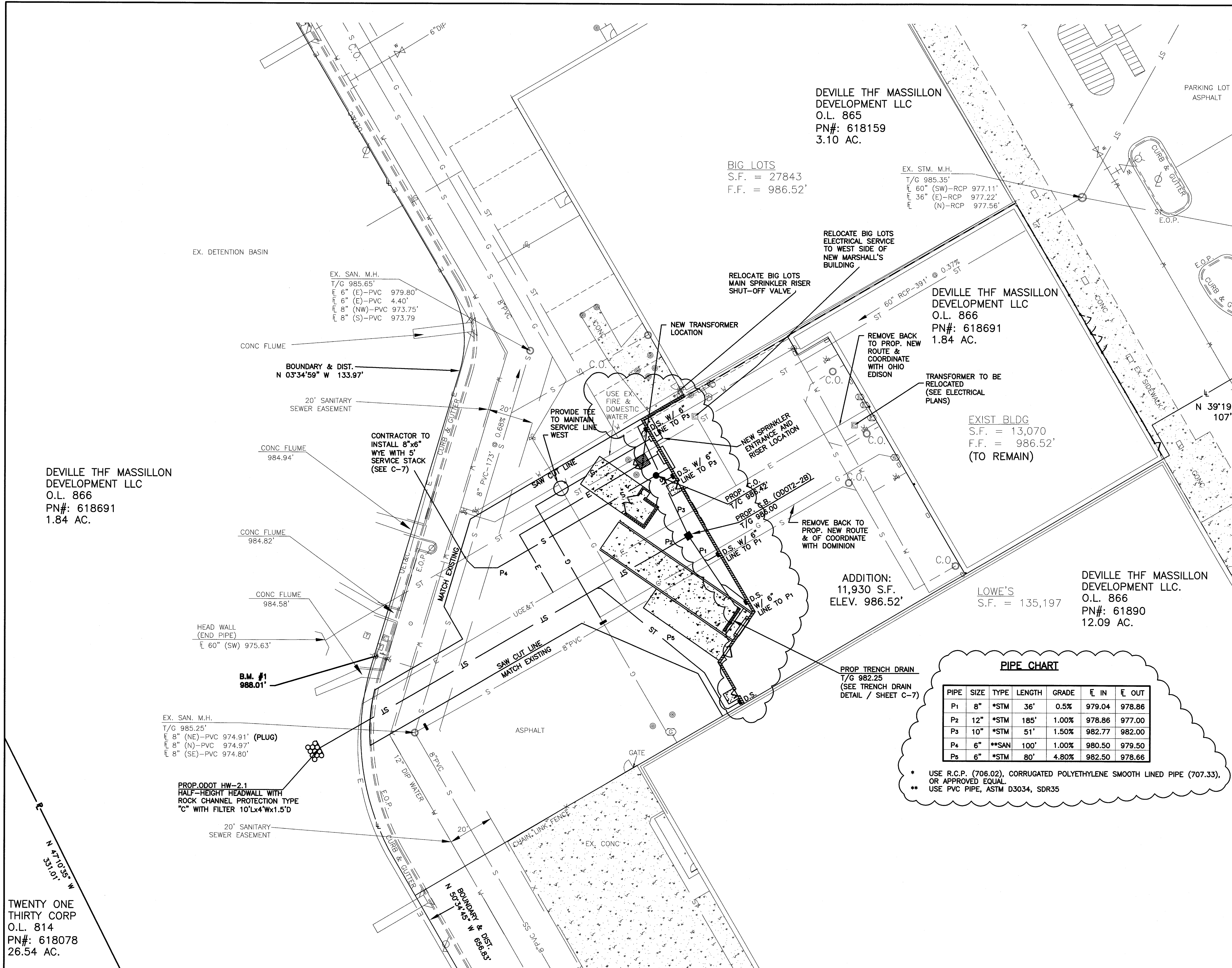
BUILDING ADDITION & INTERIOR UPFIT

FOR: MARSHALL STORE

LOCATED IN THE CITY OF MASSILLON

STARK COUNTY, OHIO

C-4



5233 STONEHAM ROAD NORTH CANTON, OHIO 44720
CANTON: (330)499-8817 ARON: (330)533-7274
TOLL FREE: 1-800-394-8817 FAX: (330)499-0149
www.hammontree-engineers.com

DESC.:	DATE:	REV. BY:	498	FLD BK:	DESIGN BY: JDS
DESC.:	DATE:	REV. BY:	70	BK PG:	DRWN BY: DMM
DESC.:	DATE:	REV. BY:	MAW	CRW CHF: MAW	CHKD BY: JDS
DESC.:	DATE:	REV. BY:	3/28/12	CPYRGHT: 2012	RWD BY: JDS
DESC.:	DATE:	REV. BY:	3/28/12	TAB: UTIL	DATE: 02/24/12

SCALE: 1"=20'

SCALES
HORIZ: 1"=20'
VERT:
CONTOUR INT:

SITE UTILITY PLAN
BUILDING ADDITION & INTERIOR UPFIT
FOR: MARSHALL STORE
LOCATED IN THE CITY OF MASSILLON
STARK COUNTY, OHIO

C-5

N.T.S.

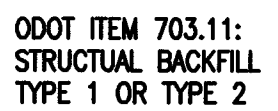


N.T.S.



- ### TYPICAL TRENCH DETAIL

N.T.S.



ODOT ITEM 603.06:
BEDDING TYPE 2

N.T.S

N.T.S.



DESIGN BY: JDS FLD BK: 498
 DRAWN BY: DMM BK PG: 70
 CHECKD BY: JDS CRW CHF: MAW
 RERWWD BY: JDS CVPYRGHT: 2012
 DATE: 02/24/12 TAB: NOTE-1

SCALES
HORIZ:
VERT:
CONTOUR INT:

SITE NOTES & DETAILS
ING ADDITION & INTERIOR UPFIT
FOR: MARSHALL STORE
LOCATED IN THE CITY OF MASSILLON
STARK COUNTY, OHIO

C-7