

	EX. MONUMENT BOX
	PROP. MONUMENT BOX
	EX. MONUMENT (AS NOTED)
	5/8" BAR W/ H&A CAP (SET)
	BENCHMARK (AS NOTED)
	BOUNDARY LINE
	CENTER LINE
	LOT LINE
	PROPERTY LINE
	RIGHT OF WAY
	RECORD BEARINGS & DIST.
	EDGE OF PAVEMENT
	FINISH FLOOR
	EX. CONTOUR LINE
	PROP. CONTOUR LINE
	CONTOUR LABEL
	BOLLARD
	FENCE (AS NOTED)
	GUARDRAIL
	MAILBOX
	RAIL ROAD
	SIGN
	H.C. PARKING SPACE
	DECIDUOUS TREE (AS NOTED)
	EVERGREEN TREE (AS NOTED)
	BUSH (AS NOTED)
	SOIL BORING
	POLE ANCHOR
	GUY POLE
	GENERAL POLE
	FLAG POLE
	LIGHT POLE
	LIGHT & POWER POLE
	LIGHT, POWER, TELE POLE
	POWER POLE
	TELEPHONE POLE
	TELEPHONE, LIGHT POLE
	TELEPHONE, POWER POLE
	PULL BOX
	TRAFFIC CONTROL BOX
	POLE W/ PED. SIGNAL
	POLE W/ TRAFFIC SIGNAL
	OVERHEAD ELECTRIC LINE
	UNDERGROUND ELECTRIC LINE
	ELECTRIC LINE MARKER
	ELECTRIC BOX
	ELECTRIC MANHOLE
	ELECTRIC METER
	FIBER OPTIC LINE
	FIBER OPTIC LINE MARKER

LEGEND

	GAS LINE
	GAS LINE MARKER
	GAS METER
	GAS VALVE
	GAS TANK
	GAS WELL
	SANITARY SEWER LINE
	SANITARY SEWER LINE MARKER
	SANITARY M.H./ C.O.
	MANHOLE
	CLEAN OUT
	STORM SEWER LINE
	STORM SEWER LINE MARKER
	STORM CATCH BASIN
	STORM CURB INLET
	STORM MANHOLE
	STORM DOWNSPOUT
	STORM HEADWALL
	CATCH BASIN
	CURB INLET
	TOP OF GRATE
	TOP OF COVER
	TOP OF CURB
	FLOWLINE
	YARD DRAIN
	DOWNSPOUT
	OVERHEAD TELEPHONE LINE
	UNDERGROUND TELEPHONE LINE
	TELEPHONE LINE MARKER
	TELEPHONE BOX
	TELEPHONE MANHOLE
	OVERHEAD TV LINE
	UNDERGROUND TV LINE
	TV LINE MARKER
	TV/CABLE BOX
	TV/CABLE MANHOLE
	WATER LINE
	WATER LINE MARKER
	WATER MANHOLE
	WATER METER
	WATER VALVE
	WATER SPRINKLER
	FIRE HYDRANT
	MONITORING WELL

ODOT STANDARD DRAWING LIST

SCD NUMBER	ITEM	DATE
CB-1.1	CATCH BASIN 2-2B	1/18/13
CB-1.2	CATCH BASIN 2-4	1/18/13
CB-2.2	CATCH BASIN NO. 3A	1/18/13
MH-1.2	MANHOLE NO. 3	1/18/13

BENCHMARK #1
CHISELED "I" AT INTERSECTION OF
SIDEWALKS AT NORTHEAST CORNER
OF NORTH AVE AND 1ST ST.
ELEV. = 950.92

BENCHMARK #2
MAG NAIL SET 1' UP WEST SIDE OF
POWER POLE ON THE WEST SIDE
OF 1ST ST, 50' NORTH OF THORNE
AVE. ELEV. = 939.18

BENCHMARK #3
CHISELED "X" ON WEST FLANGE
BOLT OF FIRE HYDRANT ON WEST
SIDE OF 1ST ST, 50' NORTH OF
CHESTNUT AVE. ELEV. = 934.43

THE FIRST NORTH BUILDING

LOCATED IN LOTS 41, 42, 43, PT LOT 51,
LOTS 56, 57 AND 623
CITY OF MASSILLON, STARK COUNTY, OH

MAY, 2016
(REVISED JULY, 2016)

ENGINEER/ SURVEYOR

HAMMONTREE & ASSOCIATES, LIMITED
5233 STONEHAM ROAD
NORTH CANTON, OHIO 44720

ATTN- JENNIFER D. SCHUMACHER, PE,
LEED-AP

PHONE- 330-499-8817

jschumacher@hammontree-engineers.com

ARCHITECT

JOHN P. PICARD ARCHITECT, INC.
113 LINCOLN WAY WEST
MASSILLON, OHIO 44647

ATTN- JOHN PICARD

PHONE- 330-471-9000

jparchitect@yahoo.com

OWNER/DEVELOPER

FIRST NORTH HOLDINGS, LLC
814 CABLE COURT
MASSILLON, OHIO 44647

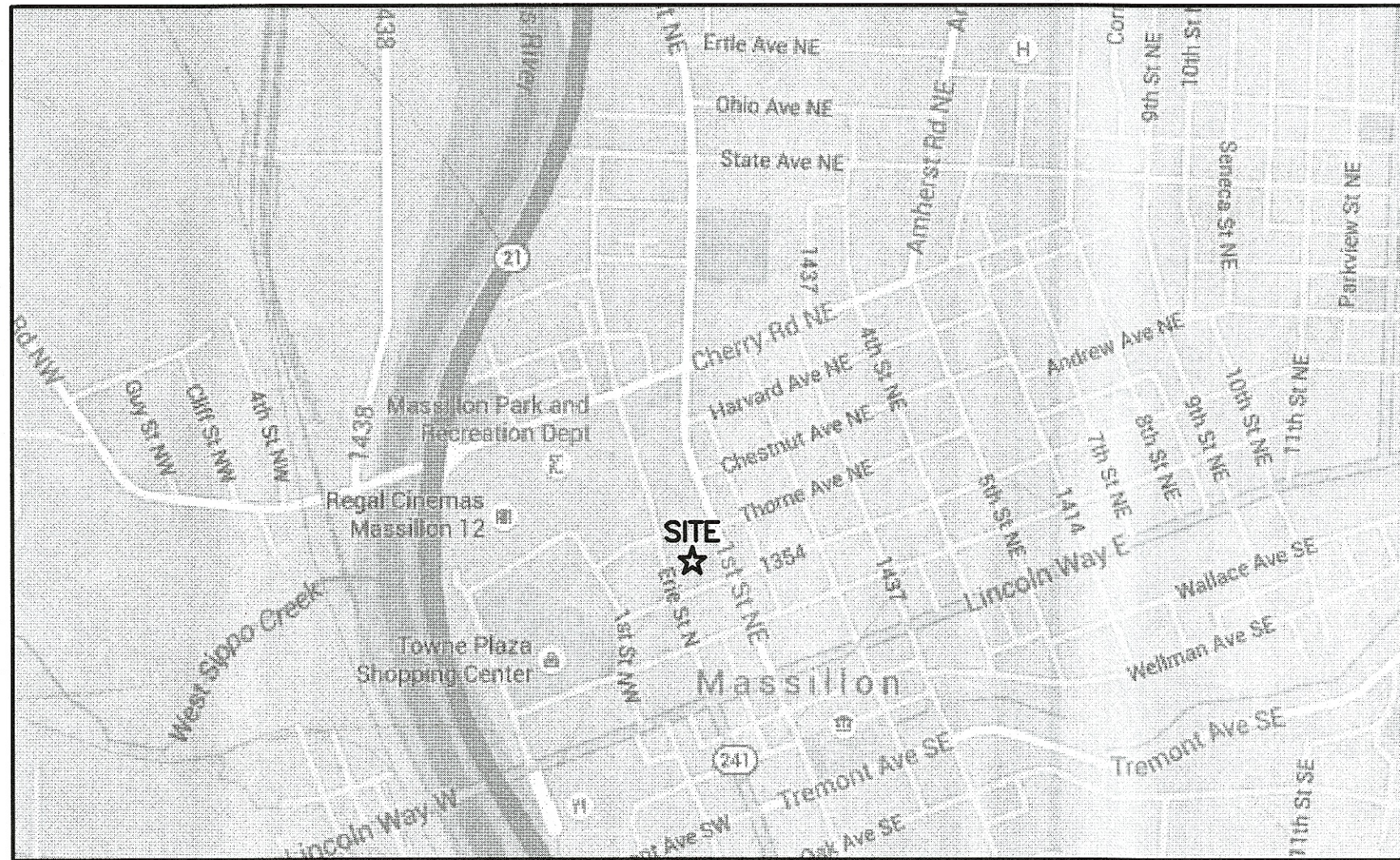
ATTN- ROBERT GESSNER

PHONE- 330-833-5509

rbgessner@mctvohio.com

VICINITY MAP

N.T.S.



SITE ADDRESS: 206 FIRST STREET NE, MASSILLON, OHIO 44646

SANITARY

CITY OF MASSILLON
MUNICIPAL GOVERNMENT ANNEX
151 LINCOLN WAY EAST
MASSILLON, OH 44646

PH: 330-830-1722

WATER

AQUA OHIO
870 THIRD ST NW
MASSILLON, OH 44647

ATTN: JACOB FLANARY

PH: 330-832-5764 X50650

GAS

DOMINION EAST OHIO
320 SPRINGSIDE DR, SUITE 320
AKRON, OH 44333

ATTN: BRYAN DAYTON

PH: 330-664-2409

UTILITY CONTACTS

ELECTRIC

OHIO EDISON
1910 W. MARKET ST, BLDG 1
AKRON, OH 44313

PH: 800-633-4766

TELEPHONE

AT&T OHIO
50 W. BOWERY ST, 6TH FLOOR
AKRON, OH 44308

ATTN: WAYNE PROUDFOOT

PH: 330-384-3052

CABLE

MASSILLON CABLE TV
814 CABLE COURT
MASSILLON, OH 44647

PH: 330-833-5509

INDEX OF SHEETS

COVER	C1.1
EXISTING SITE - DEMOLITION PLAN	C2.1
SITE DIMENSION PLAN	C3.1
SITE UTILITY PLAN	C4.1
SITE GRADING PLAN	C5.1
SITE GRADING PLAN ENLARGEMENT - SOUTH	C5.2
SITE GRADING PLAN ENLARGEMENT - NORTH	C5.3
SITE NOTES & DETAILS	C6.1
SITE NOTES & DETAILS	C6.2
EROSION AND SEDIMENT CONTROL PLAN	C7.1
EROSION AND SEDIMENT CONTROL DETAILS	C7.2
EROSION AND SEDIMENT CONTROL DETAILS	C7.3

ONLY APPROVED SIGNED PLANS BY THE CITY ENGINEER
ARE TO BE USED FOR CONSTRUCTION.

APPROVED BY THE MASSILLON CITY ENGINEER THIS 18
DAY OF August, 2016.

CITY ENGINEER

CONTRACTOR IS RESPONSIBLE FOR VERIFYING QUANTITIES, INCLUDING EARTHWORK. IT IS THE RESPONSIBILITY OF THE CONTRACTOR TO NOTIFY THE OWNER AND ENGINEER DURING THE BIDDING PROCESS OF ANY QUANTITY DISCREPANCIES IN THE BID DOCUMENTS. ONCE THE CONSTRUCTION CONTRACT IS ISSUED, THE CONTRACTOR ACKNOWLEDGES THE CONTRACT PRICE COVERS ALL LABOR AND MATERIALS TO SUBSTANTIALLY COMPLETE THE PROJECT ACCORDING TO THE CONSTRUCTION DOCUMENTS.

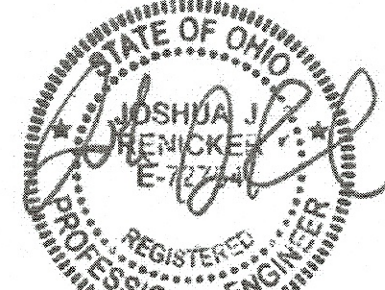
A QUALITY PRE-CONSTRUCTION VIDEO SHALL BE COMPLETED BY THE CONTRACTOR TO SHOW THE CONDITION OF THE STREET, SIDEWALKS, CURB, DRIVEWAYS, LAWNS AND ANY OTHER AREAS WHICH MAY BE IMPACTED BY THE PROPOSED CONSTRUCTION ACTIVITY. THIS VIDEO SHALL BE FINALIZED AND SUBMITTED TO THE ENGINEERING DEPARTMENT PRIOR TO THE START OF WORK ON THE PROJECT. THE CONTRACTOR IS URGED TO CREATE A DETAILED VIDEO ACCOUNT OF THE AREA IN ORDER TO REVIEW EXISTING CONDITIONS IN THE CASE OF ANY DISPUTES WHICH MAY ARISE REGARDING DAMAGE INSIDE OR RELATED TO THE PROJECT AREAS.

UNDERGROUND UTILITIES
CONTACT BOTH SERVICES
CALL TWO WORKING DAYS
BEFORE YOU DIG

CALL
1-800-362-2764
(TOLL FREE)
OHIO UTILITIES PROTECTION SERVICE
NON-MEMBERS
MUST BE CALLED DIRECTLY

OIL & GAS PRODUCERS PROTECTIVE
SERVICE CALL: 1-800-925-0988

* THE CONTRACTOR IS TO VERIFY THE LOCATION
OF ALL UTILITIES PRIOR TO CONSTRUCTION



7/20/16

REVISIONS TO CITY ENGINEER COMMENTS

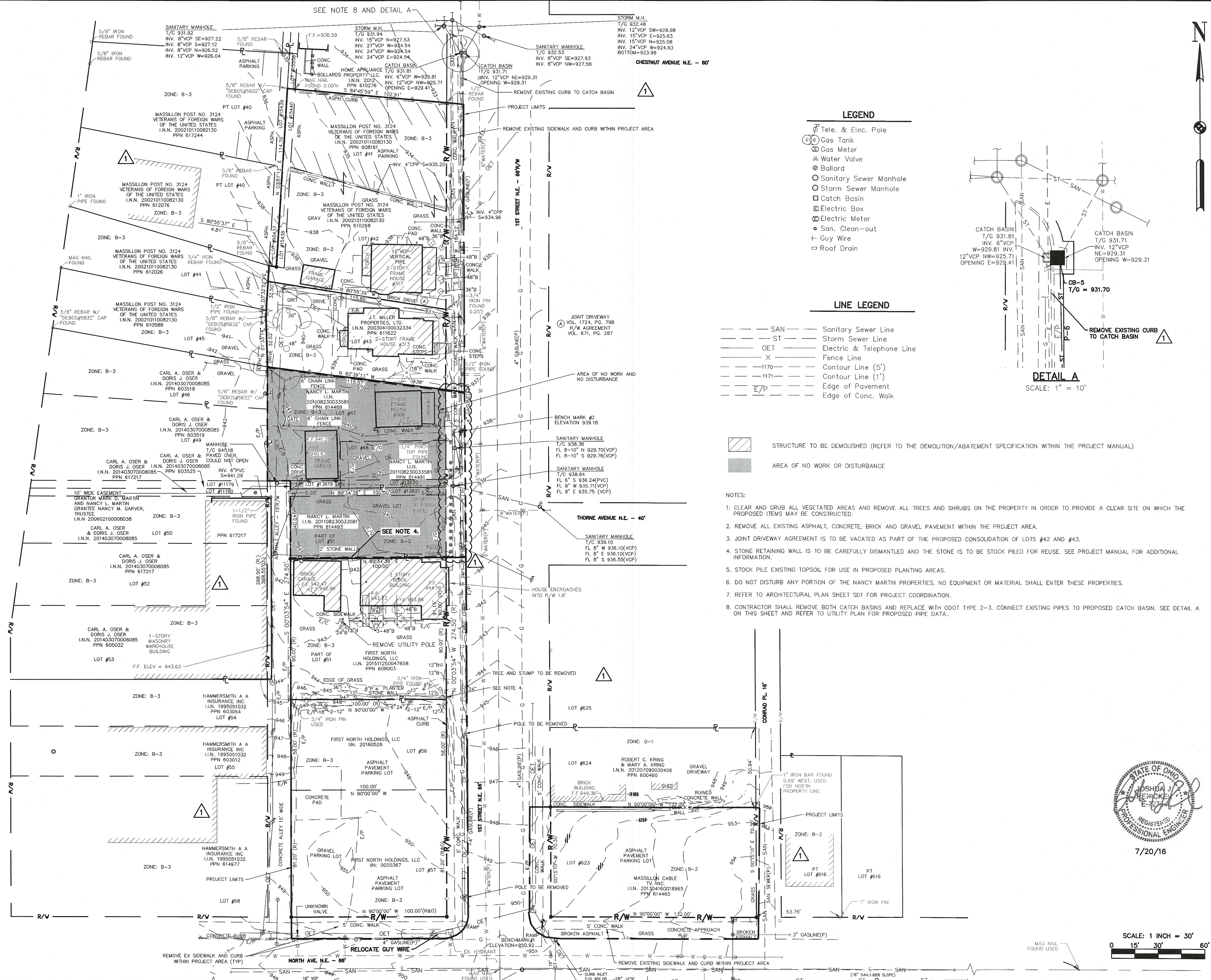
DESIGN BY: JDR
DRAWN BY: JDR
REVIEW BY: JDR
FLD BK: 591
BK PG: 69
DATE: 05/20/16

SCALES
HORIZ:
VERT:
CONTOUR INT:

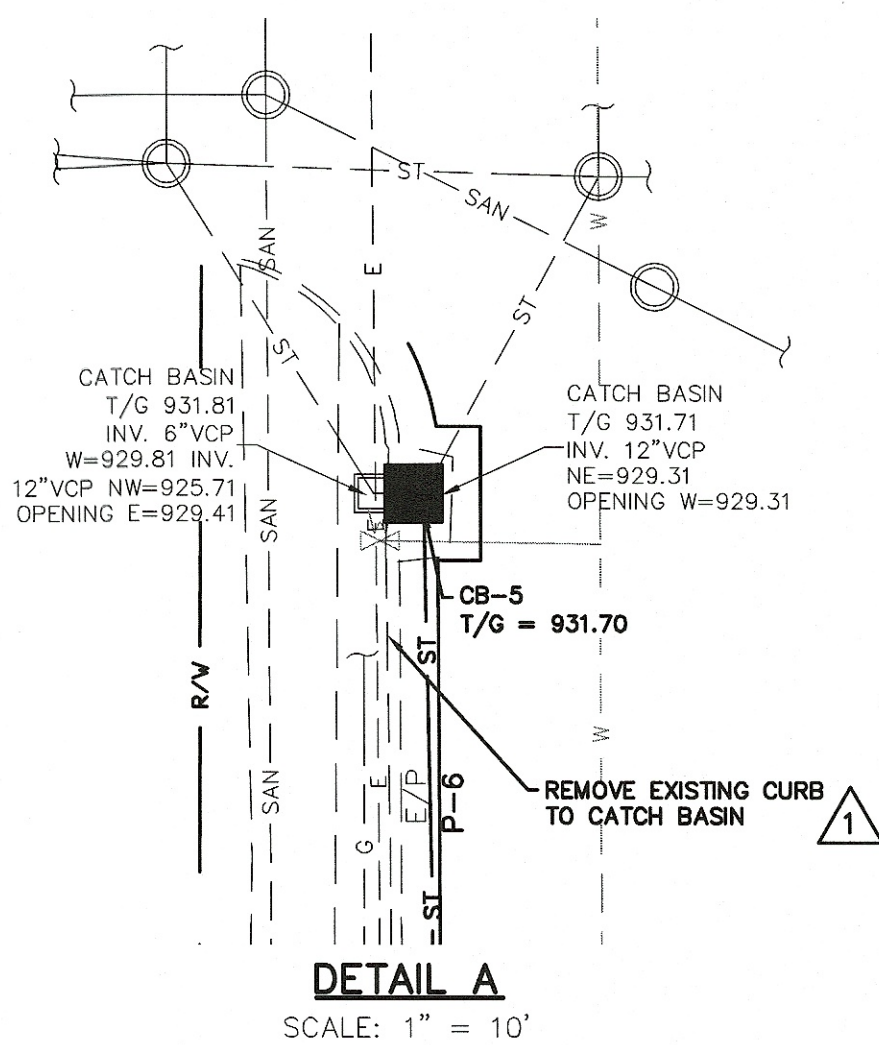
COVER
THE FIRST NORTH BUILDING
FOR: FIRST NORTH HOLDINGS, LLC
LOCATED IN SECTION 23E, LOTS 41, 42, 43, PT LOT 51,
LOTS 56, 57 AND 623
CITY OF MASSILLON, STARK COUNTY, OH

C1.1

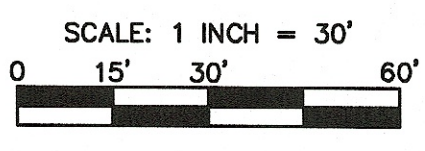
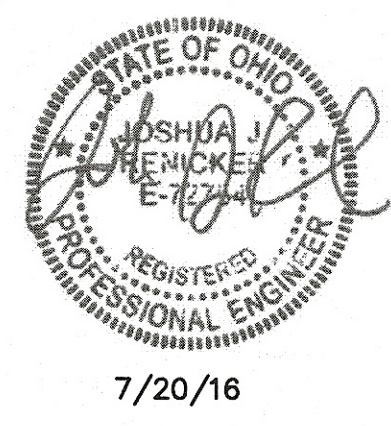
HAMMONTREE & ASSOCIATES, LIMITED
ENGINEERS, PLANNERS, SURVEYORS
5233 STONEHAM RD. NORTH CANTON, OH 44720
PH: (330) 499-8817 FAX: (330) 499-0149
TOLL FREE: 1-800-394-8817
www.hammontree-engineers.com



- LEGEND**
- Tele. & Elec. Pole
 - Gas Tank
 - Gas Meter
 - Water Valve
 - Ballard
 - Sanitary Sewer Manhole
 - Storm Sewer Manhole
 - Catch Basin
 - Electric Box
 - Electric Meter
 - San. Clean-out
 - Guy Wire
 - Roof Drain
- LINE LEGEND**
- SAN Sanitary Sewer Line
 - ST Storm Sewer Line
 - OET Electric & Telephone Line
 - X Fence Line
 - 1170- Contour Line (5')
 - 1171- Contour Line (1')
 - E/P Edge of Pavement
 - Edge of Conc. Walk



- STRUCTURE TO BE DEMOLISHED (REFER TO THE DEMOLITION/ABATEMENT SPECIFICATION WITHIN THE PROJECT MANUAL)
- AREA OF NO WORK OR DISTURBANCE
- NOTES:
- CLEAR AND GRUB ALL VEGETATED AREAS AND REMOVE ALL TREES AND SHRUBS ON THE PROPERTY IN ORDER TO PROVIDE A CLEAR SITE ON WHICH THE PROPOSED ITEMS MAY BE CONSTRUCTED.
 - REMOVE ALL EXISTING ASPHALT, CONCRETE, BRICK AND GRAVEL PAVEMENT WITHIN THE PROJECT AREA.
 - JOINT DRIVEWAY AGREEMENT IS TO BE VACATED AS PART OF THE PROPOSED CONSOLIDATION OF LOTS #42 AND #43.
 - STONE RETAINING WALL IS TO BE CAREFULLY DISMANTLED AND THE STONE IS TO BE STOCK PILED FOR REUSE. SEE PROJECT MANUAL FOR ADDITIONAL INFORMATION.
 - STOCK PILE EXISTING TOPSOIL FOR USE IN PROPOSED PLANTING AREAS.
 - DO NOT DISTURB ANY PORTION OF THE NANCY MARTIN PROPERTIES. NO EQUIPMENT OR MATERIAL SHALL ENTER THESE PROPERTIES.
 - REFER TO ARCHITECTURAL PLAN SHEET SD1 FOR PROJECT COORDINATION.
 - CONTRACTOR SHALL REMOVE BOTH CATCH BASINS AND REPLACE WITH ODOT TYPE 2-3. CONNECT EXISTING PIPES TO PROPOSED CATCH BASIN. SEE DETAIL A ON THIS SHEET AND REFER TO UTILITY PLAN FOR PROPOSED PIPE DATA.



HAMMONTREE & ASSOCIATES, LIMITED
ENGINEERS, PLANNERS, SURVEYORS
9233 STONEHAM RD. NORTH CANTON, OH 44720
PH: (330) 488-8817 FAX: (330) 488-0149
TOLL FREE: 1-800-394-8817
www.hammontree-engineers.com

RESPONSE TO CITY ENGINEER COMMENTS

REV. BY:	JUR.	DATE:	DESC.
DES. BY:	JUR.	DATE:	DESC.
DRWN BY:	JUR.	DATE:	DESC.
RWD BY:	JUR.	DATE:	DESC.
FLD BY:	JUR.	DATE:	DESC.
BK PG:	JUR.	DATE:	DESC.

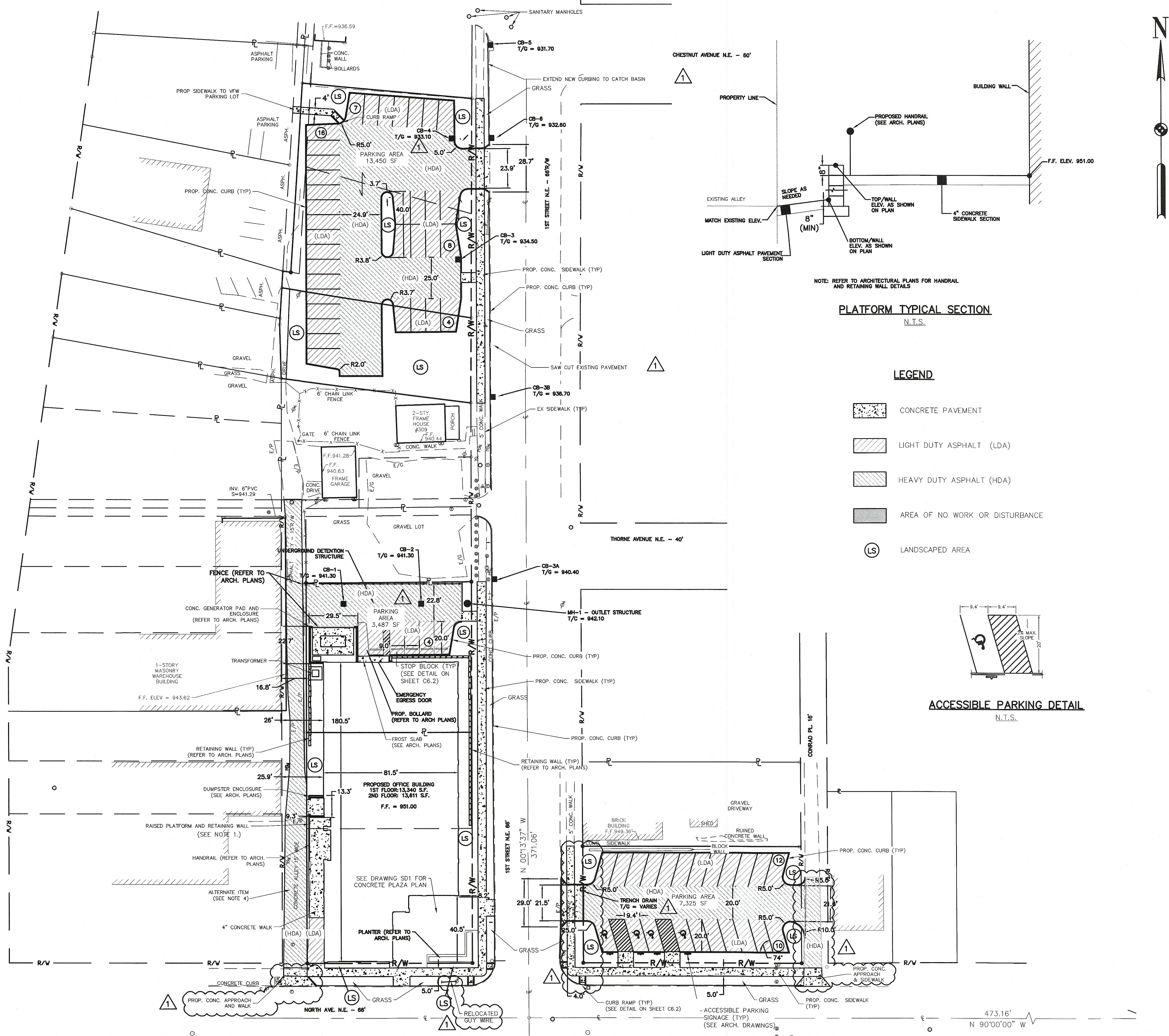
DATE: 05/20/16

SCALES
HORIZ: 1"=30'
VERT: 1"=10'
CONTOUR INT: 1'

EXISTING SITE - DEMOLITION PLAN
THE FIRST NORTH BUILDING
FOR: FIRST NORTH HOLDINGS, LLC
LOCATED IN SECTION 23E, LOTS 41, 42, 43, PT LOT 51,
LOTS 56, 57 AND 623
CITY OF MASSILLON, STARK COUNTY, OH

C2.1

C:\Users\shelby\appdata\local\temp\AcPublish_11700\2016-07-20 FIRST NORTH SITE.dwg: 7/25/16 - 3:19pm; shelby



SITE DATA

ADDRESS:
206 FIRST ST NE
MASSILLON, OH 44646

TOTAL SITE AREA: 1.20 AC.

AREA OF SITE TO
UNDERGO EXCAVATION: 0.85 AC.

PROPOSED USE:
OFFICE BUILDING WITH
PARKING LOT

ZONING

ZONED: B-2 AND B-3

PARKING

PARKING REQUIRED:
IN ACCORDANCE WITH THE VARIANCE
APPROVED BY THE MASSILLON
BOARD OF APPEALS ON JANUARY
21, 2015, 55 PARKING SPACES ARE
REQUIRED.

PARKING PROVIDED:
61 SPACES, WITH 4 BEING HC

TYPICAL SPACE SIZE: 9'x 20'

UTILITY NOTES

WATER:
THE CONTRACTOR SHALL COORDINATE
THE WATER SERVICE CONNECTION FOR
THE PROPOSED BUILDING WITH AQUA
OHIO. CONTRACTOR TO INCLUDE ALL
TAP AND CONNECTION FEES IN THEIR
BASE BID.

SANITARY:
THE CONTRACTOR SHALL COORDINATE
WITH THE CITY OF MASSILLON
ENGINEERING DEPARTMENT FOR THE
SANITARY LATERAL CONNECTION.
CONTRACTOR TO INCLUDE ALL TAP AND
CONNECTION FEES IN THEIR BASE BID.

DRAINAGE:
THE CONTRACTOR SHALL COORDINATE
WITH THE CITY OF MASSILLON
ENGINEERING DEPARTMENT FOR THE
STORM SEWER CONNECTION.
CONTRACTOR TO INCLUDE ALL TAP AND
CONNECTION FEES IN THEIR BASE BID.

GAS:
THE CONTRACTOR SHALL COORDINATE
WITH DOMINION EAST OHIO GAS FOR
THE GAS SERVICE CONNECTION.
CONTRACTOR TO INCLUDE ALL TAP AND
CONNECTION FEES IN THEIR BASE BID.

NOTES

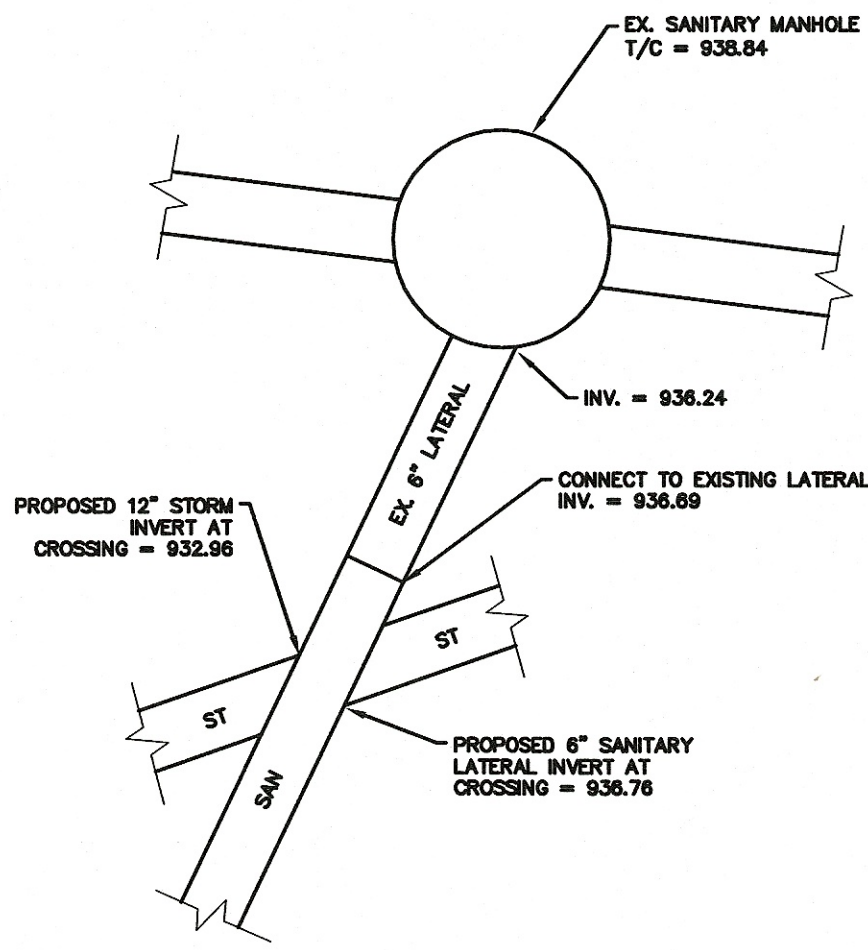
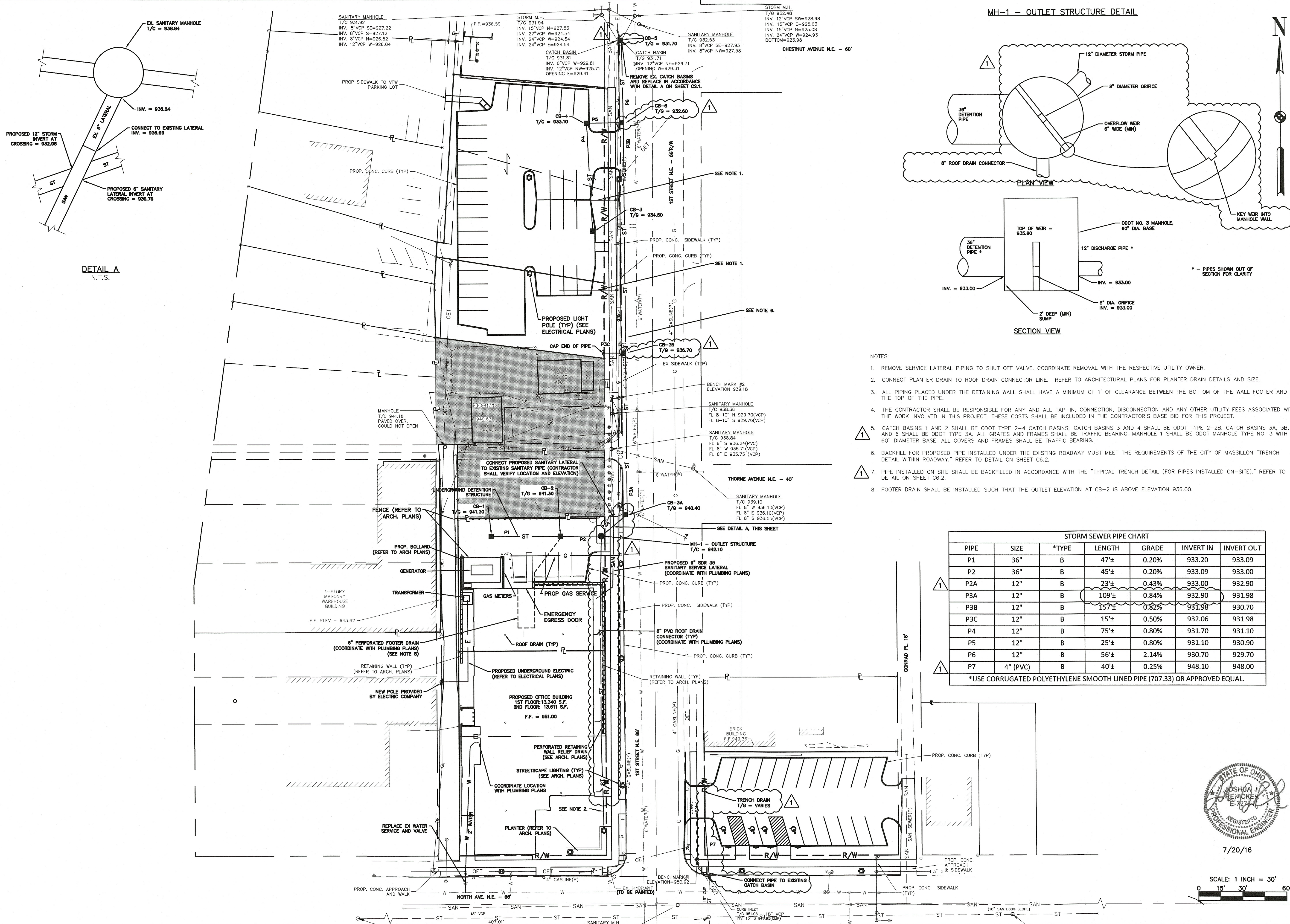
- SAWCUT AND REMOVE EXISTING
PAVEMENT AS NEEDED TO INSTALL
PLATFORM. REFER TO DETAIL ON THIS
SHEET.
- CURB RAMPS SHALL BE IN
ACCORDANCE WITH ODOT SCD BP-7.1
NEW CURB RAMPS, TYPE A2, WITH
FIBERGLASS DETECTABLE WARNING
PLATES.
- ALL UTILITY FEES ARE TO BE PAID
BY THE CONTRACTOR. INCLUDE THESE
FEES IN THE BASE BID.
- AS AN ALTERNATE ITEM, THE
CONTRACTOR SHALL INCLUDE THE
COST FOR REMOVING ALL EXISTING
CONCRETE AND ASPHALT PAVEMENT
WITHIN THE ALLEY AND INSTALLING
HEAVY DUTY ASPHALT PAVEMENT.
THIS WORK SHALL BE COMPLETED IN
ACCORDANCE WITH BEST ENGINEERING
PRACTICES. SEE TYPICAL SECTION ON
SHEET C5.1.



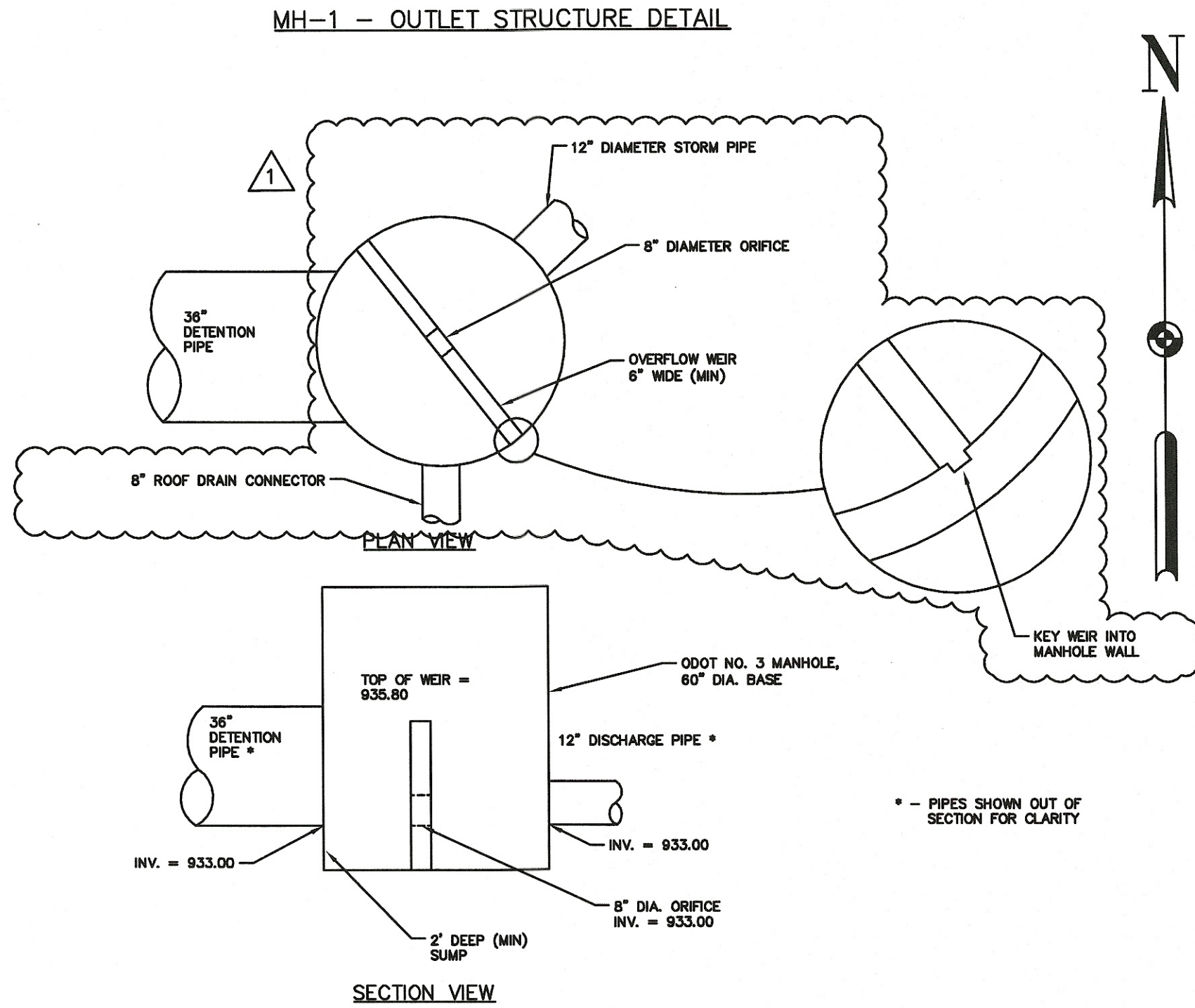
SCALE: 1 INCH = 30'
0 15' 30' 60'

HAMMONTREE & ASSOCIATES, LIMITED ENGINEERS, PLANNERS, SURVEYORS PA 5233 STONEHAM RD. NORTH CANTON, OH 44720 PH: (330) 499-8817 FAX: (330) 499-0149 TOLL FREE: 1-800-394-8817 www.hammontree-engineers.com	RESPONSE TO CITY ENGINEER COMMENTS	JUR: _____	DATE: 7/14/16	DESC: _____
	DESIGN BY: JDS	DATE: _____	DESC: _____	
	REVIEW BY: JDS	DATE: _____	DESC: _____	
	DATE: 05/20/16			
SITE DIMENSION PLAN THE FIRST NORTH BUILDING FOR: FIRST NORTH HOLDINGS, LLC LOCATED IN SECTION 23E, LOTS 41, 42, 43, PT LOT 51, LOTS 56, 57 AND 623 CITY OF MASSILLON, STARK COUNTY, OH	SCALES HORIZ: _____ VERT: _____ CONTOUR INT: _____			
	C3.1			

C:\Users\shelby\appdata\local\temp\AcPublish_11700\2016-07-20 FIRST NORTH SITE.dwg: 7/25/16 - 3:19pm; shelby



DETAIL A
N.T.S.



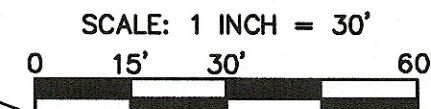
- NOTES:
1. REMOVE SERVICE LATERAL PIPING TO SHUT OFF VALVE. COORDINATE REMOVAL WITH THE RESPECTIVE UTILITY OWNER.
 2. CONNECT PLANTER DRAIN TO ROOF DRAIN CONNECTOR LINE. REFER TO ARCHITECTURAL PLANS FOR PLANTER DRAIN DETAILS AND SIZE.
 3. ALL PIPING PLACED UNDER THE RETAINING WALL SHALL HAVE A MINIMUM OF 1' OF CLEARANCE BETWEEN THE BOTTOM OF THE WALL FOOTER AND THE TOP OF THE PIPE.
 4. THE CONTRACTOR SHALL BE RESPONSIBLE FOR ANY AND ALL TAP-IN, CONNECTION, DISCONNECTION AND ANY OTHER UTILITY FEES ASSOCIATED WITH THE WORK INVOLVED IN THIS PROJECT. THESE COSTS SHALL BE INCLUDED IN THE CONTRACTOR'S BASE BID FOR THIS PROJECT.
 5. CATCH BASINS 1 AND 2 SHALL BE ODOT TYPE 2-4 CATCH BASINS; CATCH BASINS 3 AND 4 SHALL BE ODOT TYPE 2-2B. CATCH BASINS 3A, 3B, 5 AND 6 SHALL BE ODOT TYPE 3A. ALL GRATES AND FRAMES SHALL BE TRAFFIC BEARING. MANHOLE 1 SHALL BE ODOT MANHOLE TYPE NO. 3 WITH A 60" DIAMETER BASE. ALL COVERS AND FRAMES SHALL BE TRAFFIC BEARING.
 6. BACKFILL FOR PROPOSED PIPE INSTALLED UNDER THE EXISTING ROADWAY MUST MEET THE REQUIREMENTS OF THE CITY OF MASSILLON "TRENCH DETAIL WITHIN ROADWAY." REFER TO DETAIL ON SHEET C6.2.
 7. PIPE INSTALLED ON SITE SHALL BE BACKFILLED IN ACCORDANCE WITH THE "TYPICAL TRENCH DETAIL (FOR PIPES INSTALLED ON-SITE)." REFER TO DETAIL ON SHEET C6.2.
 8. FOOTER DRAIN SHALL BE INSTALLED SUCH THAT THE OUTLET ELEVATION AT CB-2 IS ABOVE ELEVATION 936.00.

STORM SEWER PIPE CHART						
PIPE	SIZE	*TYPE	LENGTH	GRADE	INVERT IN	INVERT OUT
P1	36"	B	47'±	0.20%	933.20	933.09
P2	36"	B	45'±	0.20%	933.09	933.00
P2A	12"	B	23'±	0.43%	933.00	932.90
P3A	12"	B	109'±	0.84%	932.90	931.98
P3B	12"	B	157'±	0.82%	931.98	930.70
P3C	12"	B	15'±	0.50%	932.06	931.98
P4	12"	B	75'±	0.80%	931.70	931.10
P5	12"	B	25'±	0.80%	931.10	930.90
P6	12"	B	56'±	2.14%	930.70	929.70
P7	4" (PVC)	B	40'±	0.25%	948.10	948.00

*USE CORRUGATED POLYETHYLENE SMOOTH LINED PIPE (707.33) OR APPROVED EQUAL.



7/20/16



HAMMONTREE & ASSOCIATES, LIMITED
ENGINEERS, PLANNERS, SURVEYORS
5233 STONEHAM RD. NORTH CANTON, OH 44720
PHN: (330) 489-8817 FAX: (330) 489-0149
TOLL FREE: 1-800-394-8817
www.hammontree-engineers.com

RESPONSE TO CITY ENGINEER COMMENTS

REV. BY:	JUR.	DATE:	7/14/16	DESC.:
REV. BY:	JUR. <td>DATE:</td> <td></td> <td>DESC.:</td>	DATE:		DESC.:
REV. BY:	JUR. <td>DATE:</td> <td></td> <td>DESC.:</td>	DATE:		DESC.:
REV. BY:	JUR. <td>DATE:</td> <td></td> <td>DESC.:</td>	DATE:		DESC.:
REV. BY:	JUR. <td>DATE:</td> <td></td> <td>DESC.:</td>	DATE:		DESC.:

DESIGN BY: JUR.

DRWN BY: JUR.

RWD BY: JUR.

FLD BK: 591

BK PG: 69

DATE: 05/20/16

SCALES

HORZ:

VERT:

CONTOUR INT:

SITE UTILITY PLAN

THE FIRST NORTH BUILDING

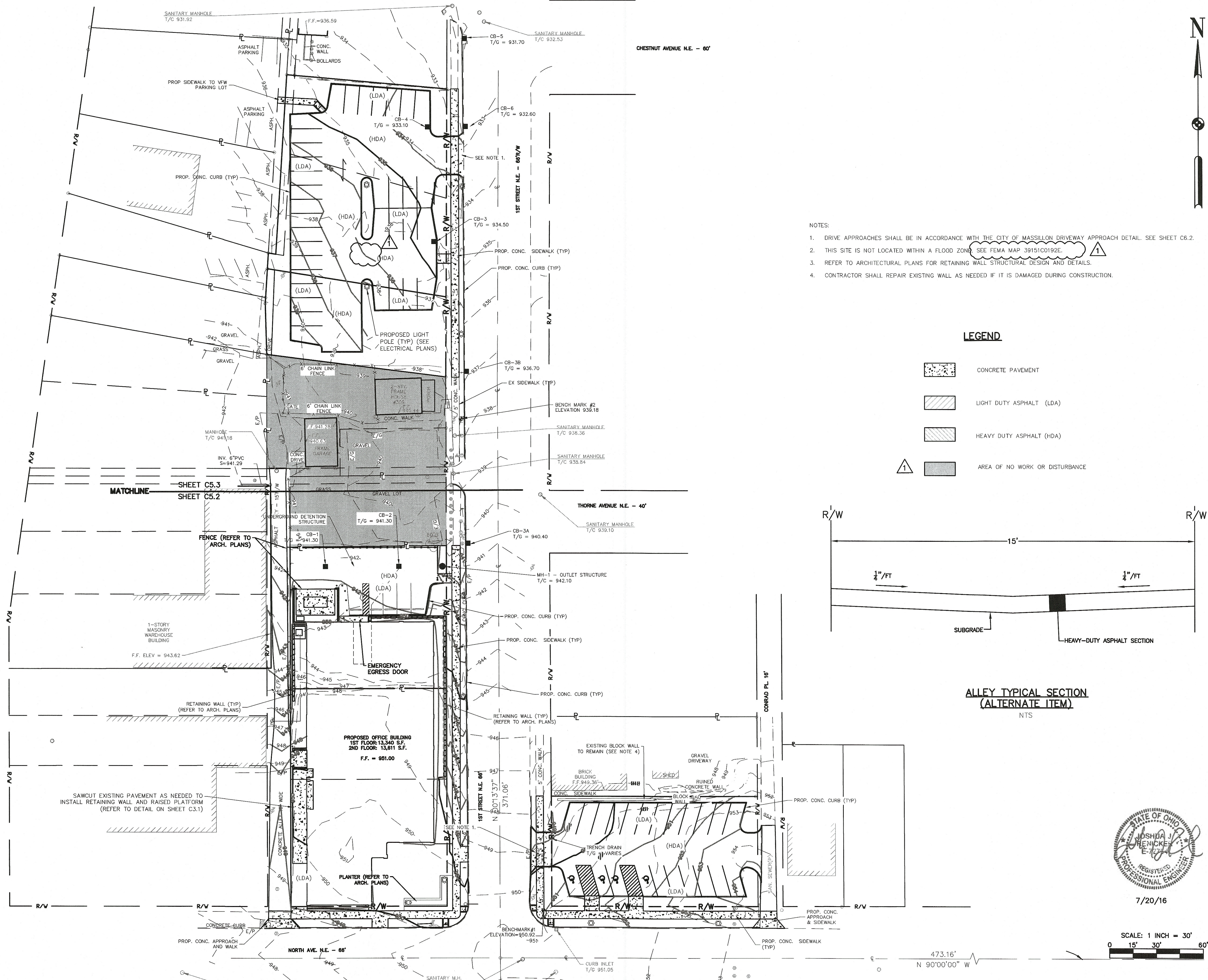
FOR: FIRST NORTH HOLDINGS, LLC

LOCATED IN SECTION 23E, LOTS 41, 42, 43, PT LOT 51,

LOTS 56, 57 AND 623

CITY OF MASSILLON, STARK COUNTY, OH

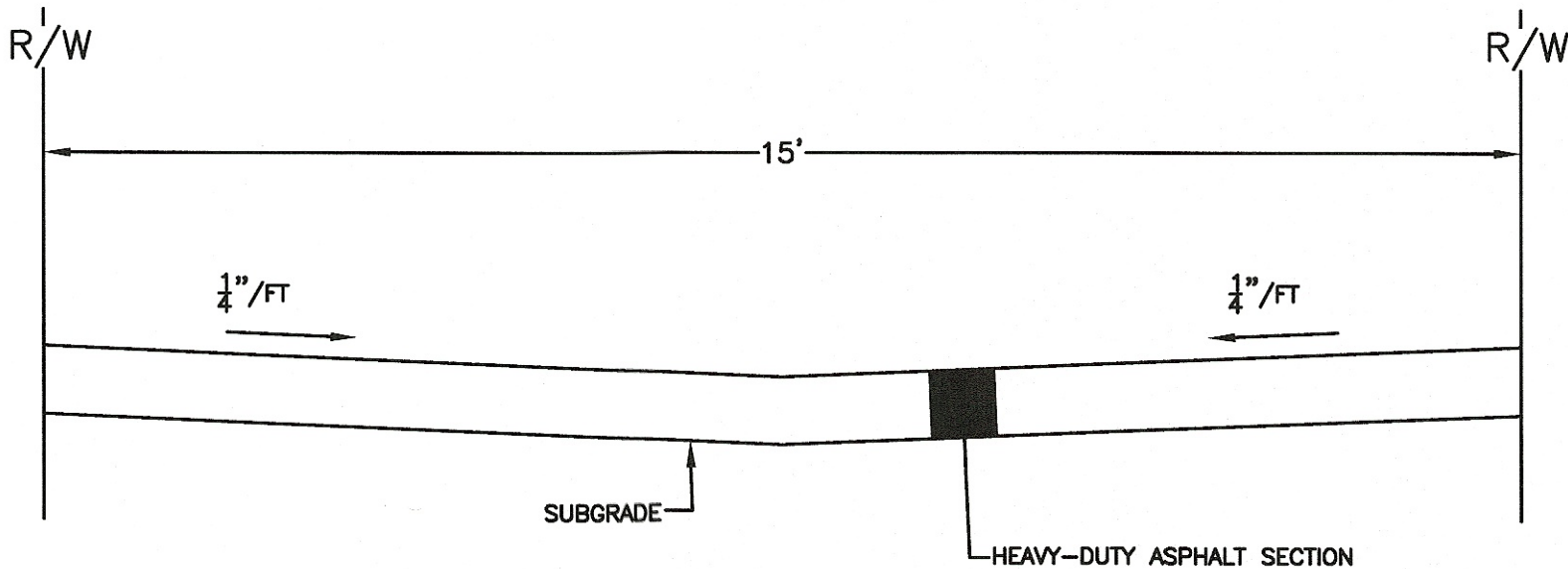
C4.1



- NOTES:
1. DRIVE APPROACHES SHALL BE IN ACCORDANCE WITH THE CITY OF MASSILLON DRIVEWAY APPROACH DETAIL. SEE SHEET C6.2.
 2. THIS SITE IS NOT LOCATED WITHIN A FLOOD ZONE. SEE FEMA MAP 39151C0192E.
 3. REFER TO ARCHITECTURAL PLANS FOR RETAINING WALL STRUCTURAL DESIGN AND DETAILS.
 4. CONTRACTOR SHALL REPAIR EXISTING WALL AS NEEDED IF IT IS DAMAGED DURING CONSTRUCTION.

LEGEND

- CONCRETE PAVEMENT
- LIGHT DUTY ASPHALT (LDA)
- HEAVY DUTY ASPHALT (HDA)
- AREA OF NO WORK OR DISTURBANCE

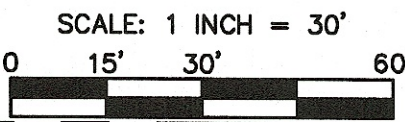


ALLEY TYPICAL SECTION
(ALTERNATE ITEM)

NTS

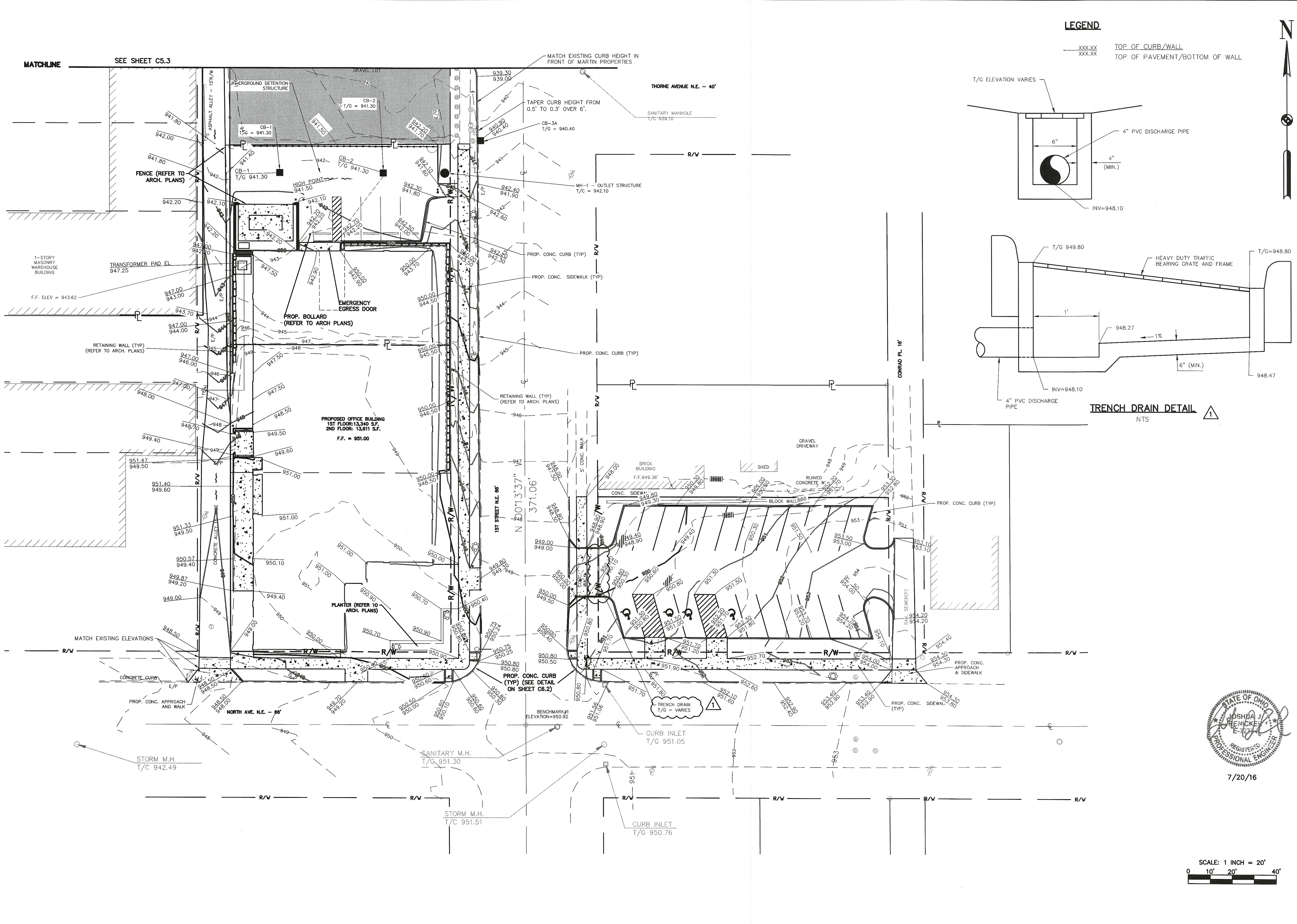


7/20/16



HAMMONTREE & ASSOCIATES, LIMITED ENGINEERS, PLANNERS, SURVEYORS PA 5233 STONEHAM RD. NORTH CANTON, OH 44720 PH: (330) 489-8817 FAX: (330) 489-0149 TOLL FREE: 1-800-394-8817 www.hammontree-engineers.com	RESPONSE TO CITY ENGINEER COMMENTS	
	DESIGN BY: JUR	DATE: 7/14/16
	REVIEW BY: JUR	DATE: 7/14/16
	DATE: 05/20/16	
SITES HORIZ: VERT: CONTOUR INT:	SCALE: 1 INCH = 30'	
	0 15' 30' 60'	
	N 90°00'00" W	
	473.16'	
SITE GRADING PLAN THE FIRST NORTH BUILDING FOR: FIRST NORTH HOLDINGS, LLC LOCATED IN SECTION 23E, LOTS 41, 42, 43, PT LOT 51, LOTS 56, 57 AND 623 CITY OF MASSILLON, STARK COUNTY, OH	C5.1	

C:\Users\shelby\appdata\local\temp\11700\2016-07-20 FIRST NORTH SITE.dwg; 7/25/16 - 3:19pm; shelby



HAMMONTREE & ASSOCIATES, LIMITED

ENGINEERS, PLANNERS, SURVEYORS

9233 STONEHAM RD. NORTH CANTON, OH 44720

PH: (330) 499-8817 FAX: (330) 499-0149

TOLL FREE: 1-800-394-8817

www.hammontree-engineers.com

PA

OH

WV

RESPONSE TO CITY ENGINEER COMMENTS

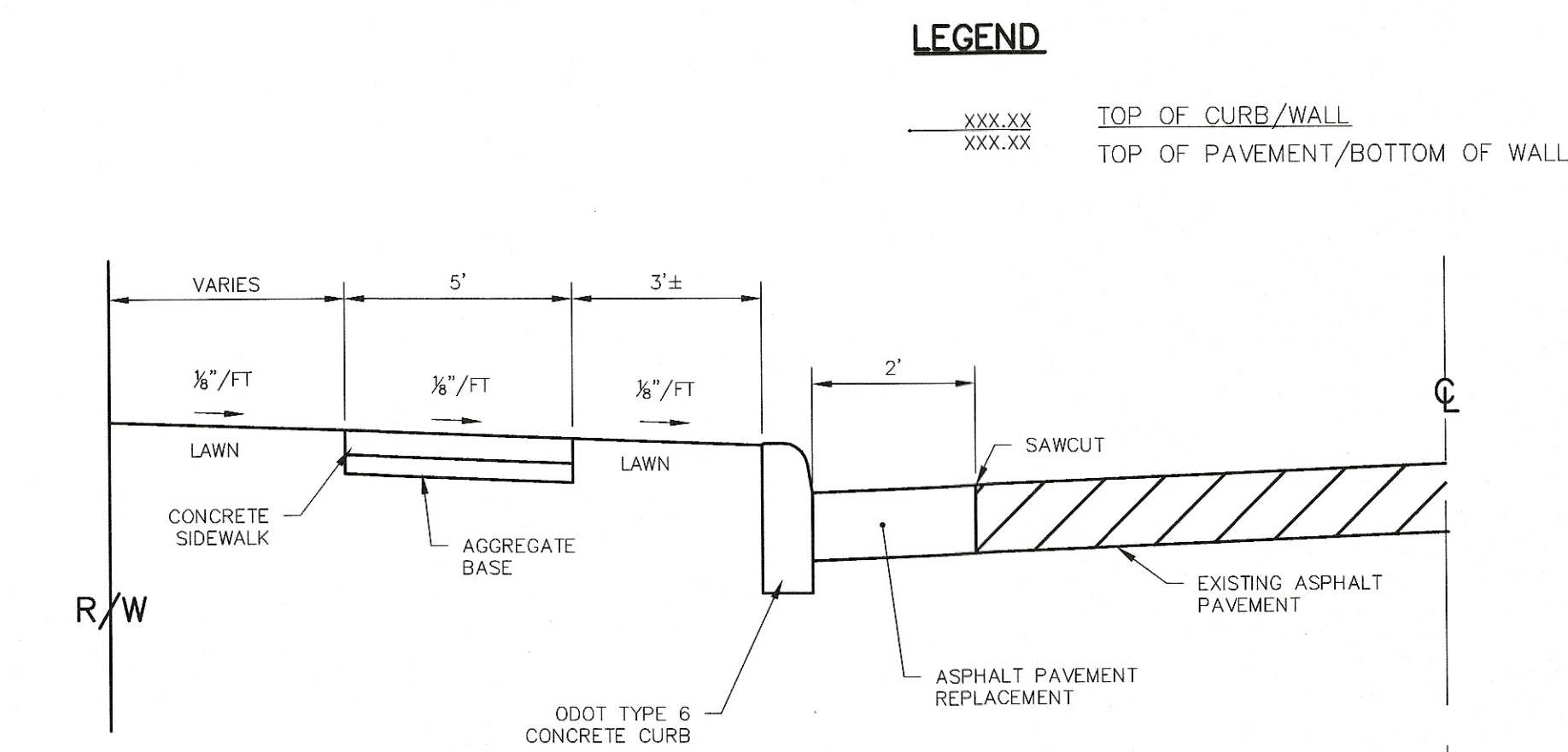
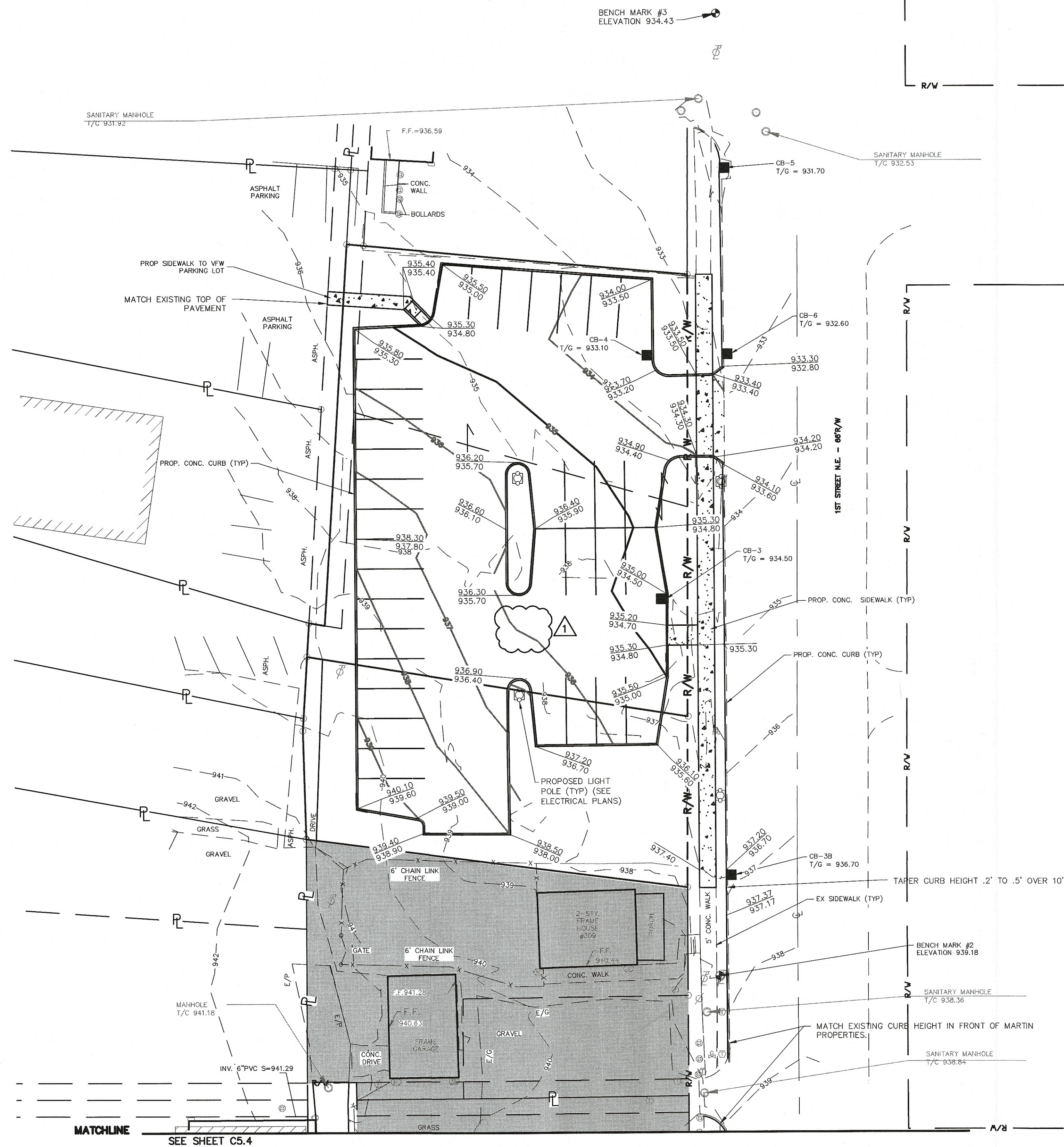
DESIGN BY:	JJR	DATE:	7/14/16	DESC.:	
DRWN BY:	JDS	DATE:		DESC.:	
RVMD BY:		DATE:		DESC.:	
FLD BK:	591	DATE:		DESC.:	
BK PG:	69	DATE:		DESC.:	

DATE: 05/20/16

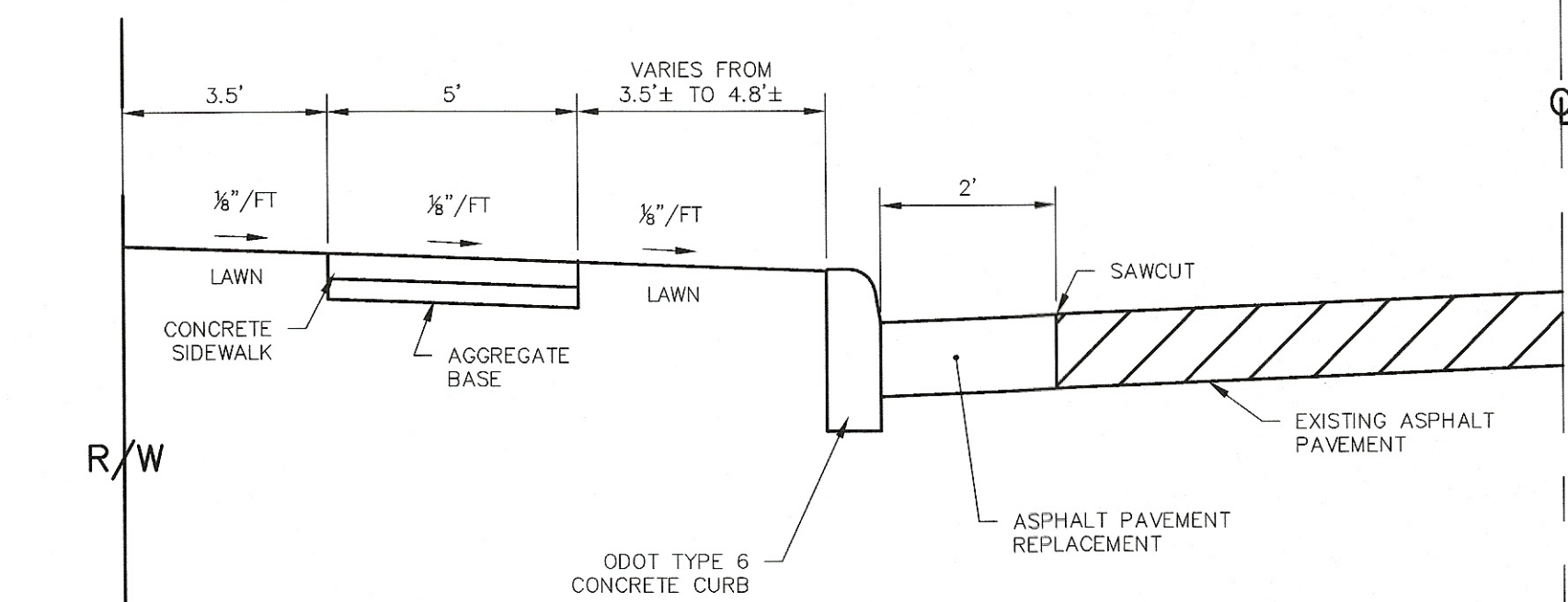
SCALES
HORZ: 1"=20'
VERT: CONTOUR INT: 1'

SITE GRADING PLAN (ENLARGED)
THE FIRST NORTH BUILDING
FOR: FIRST NORTH HOLDINGS, LLC
LOCATED IN SECTION 23E, LOTS 41, 42, 43, PT LOT 51,
LOTS 56, 57 AND 623
CITY OF MASSILLON, STARK COUNTY, OH

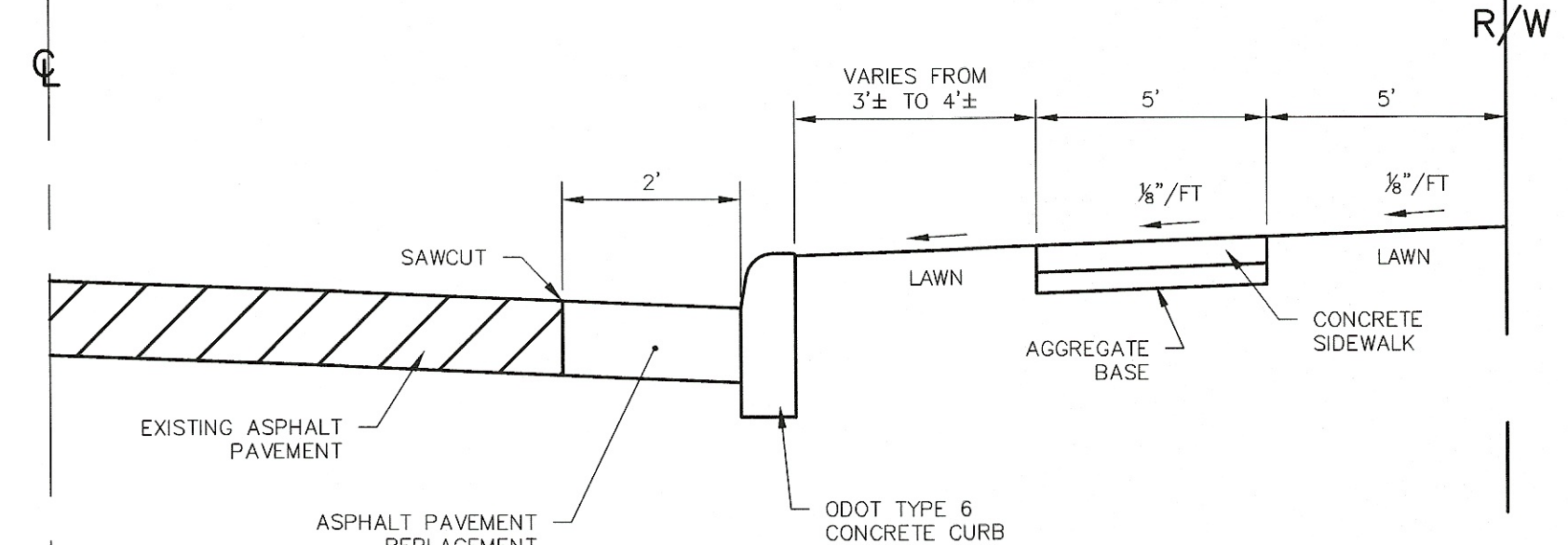
C5.2



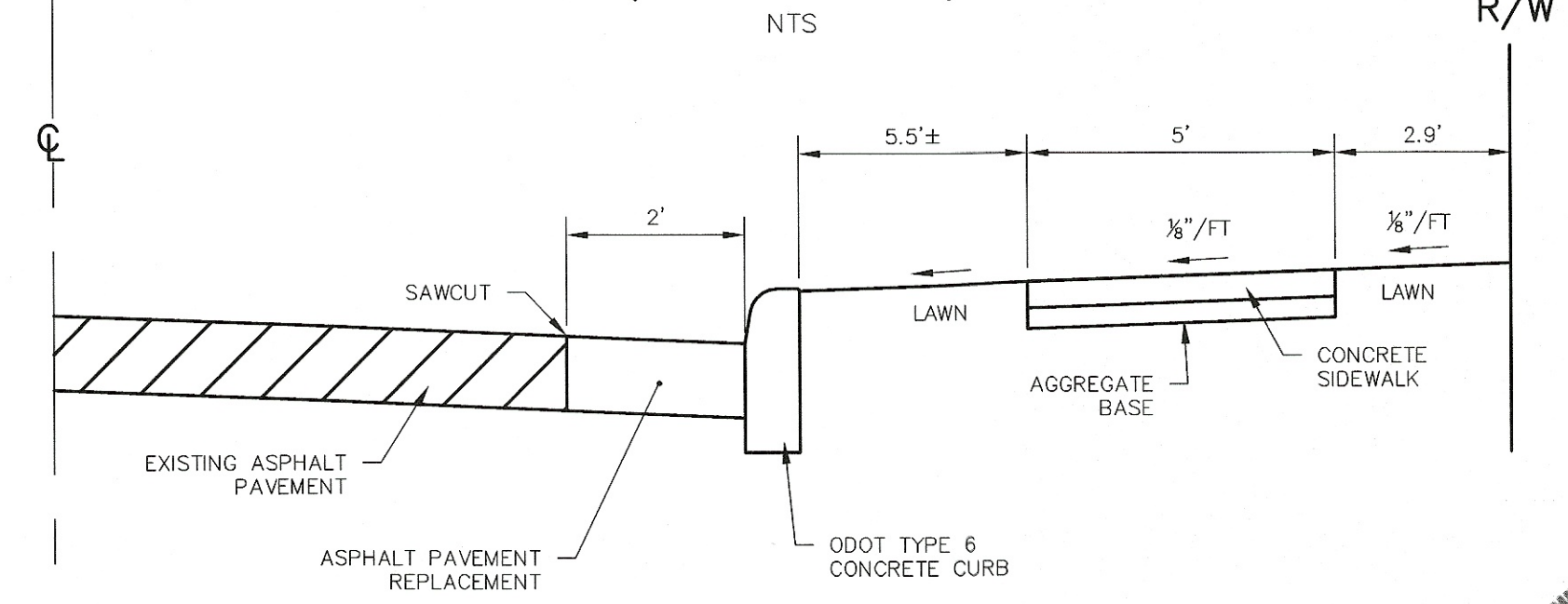
TYPICAL SECTION ALONG 1ST STREET AT NORTH PARKING LOT
(LOOKING NORTH)



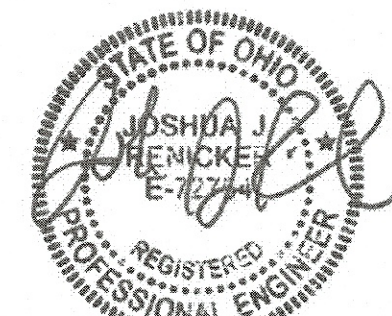
TYPICAL SECTION ALONG 1ST STREET AT PROPOSED BUILDING
(LOOKING NORTH)
NTS



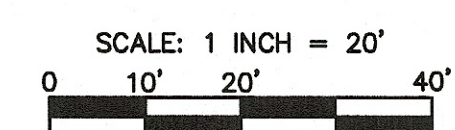
TYPICAL SECTION ALONG 1ST STREET AT PARKING LOT
(LOOKING NORTH)



TYPICAL SECTION ALONG NORTH AVENUE
(LOOKING WEST)



7/20/16



DEMOLITION NOTES

1. THE CONTRACTOR IS RESPONSIBLE FOR THE DEMOLITION, REMOVAL, AND DISPOSAL (IN A LOCATION APPROVED BY THE GOVERNING AUTHORITIES) OF ALL STRUCTURES; SO THAT THE IMPROVEMENTS SHOWN ON THE REMAINING PLANS CAN BE CONSTRUCTED. ALL FACILITIES TO BE REMOVED SHALL BE UNDERCUT TO SUITABLE MATERIAL AND BROUGHT TO GRADE WITH SUITABLE COMPACTED FILL MATERIAL PER THE SPECIFICATIONS OUTLINED IN THESE PLANS OR GEOTECHNICAL REPORT. THE CONTRACTOR IS RESPONSIBLE FOR OBTAINING ALL PERMITS NEEDED FOR DEMOLITION AND DISPOSAL.
2. THE CONTRACTOR SHALL COORDINATE WITH THE RESPECTIVE UTILITY COMPANIES PRIOR TO THE REMOVAL AND/OR RELOCATION OF UTILITIES. ALL EXISTING UTILITY CONNECTIONS ARE TO BE ABANDONED AS DIRECTED BY THE RESPECTIVE UTILITY OWNER.
3. THE CONTRACTOR SHALL COORDINATE WITH THE UTILITY COMPANY CONCERNING PORTIONS OF WORK WHICH MAY BE PERFORMED BY THE UTILITY COMPANY'S FORCES AND ANY FEES WHICH ARE TO BE PAID TO THE UTILITY COMPANY FOR THEIR SERVICES. THE CONTRACTOR IS RESPONSIBLE FOR PAYING ALL FEES AND CHARGES.
4. THE CONTRACTOR SHALL BE RESPONSIBLE FOR THE DISCONNECTION OF UTILITY SERVICES TO THE EXISTING BUILDING(S) PRIOR TO START OF DEMOLITION. EXISTING UTILITY CONNECTIONS TO THE BUILDING ARE NOT SHOWN ON THIS SURVEY.
5. ALL POTENTIALLY HAZARDOUS/TOXIC MATERIALS MUST BE REMOVED FROM THE BUILDING(S) PRIOR TO DEMOLITION. POTENTIALLY HAZARDOUS/TOXIC MATERIALS THAT MUST BE REMOVED INCLUDE, BUT ARE NOT LIMITED TO, FLUORESCENT BULBS AND BALLASTS, MERCURY CONTAINING SWITCHES, ELECTRONIC EQUIPMENT (TELEVISIONS, COMPUTERS, ETC.), REFRIGERATORS, BATTERIES, CLEANING SUPPLIES, AND SMALL CONTAINERS OF PAINT, SOLVENTS, OR OILS. SEE ALSO DEMOLITION/ABATEMENT SPECIFICATION WITHIN THE PROJECT MANUAL.
6. IF ANY PAVEMENT IS DAMAGED OUTSIDE THE SAW-CUT LIMITS, THE CONTRACTOR IS RESPONSIBLE FOR THE REMOVAL AND REPAIR OF THAT PAVEMENT.
7. THE LOCATIONS OF ALL EXISTING UTILITIES SHOWN ON THIS PLAN HAVE BEEN DETERMINED FROM THE BEST INFORMATION AVAILABLE AND ARE GIVEN FOR THE CONVENIENCE OF THE CONTRACTOR. THE ENGINEER ASSUMES NO RESPONSIBILITY FOR THEIR ACCURACY. PRIOR TO THE START OF ANY DEMOLITION OR CONSTRUCTION ACTIVITY, THE CONTRACTOR SHALL BE RESPONSIBLE FOR VERIFYING THE LOCATIONS OF ALL UTILITIES.
8. SEE ALSO DEMOLITION/ABATEMENT SPECIFICATION WITHIN THE PROJECT MANUAL.

UTILITY NOTES

1. UTILITIES SHOWN WERE TAKEN FROM RECORDS OF RESPECTIVE UTILITY COMPANIES AND FROM A TOPOGRAPHIC SURVEY AND DO NOT NECESSARILY REPRESENT ALL UNDERGROUND OR OVERHEAD UTILITIES ADJACENT TO OR UPON THE PREMISES SHOWN ON THE PLAN. CALL OUPS PRIOR TO EXCAVATION.
2. ANY UTILITIES FOUND DURING EXCAVATION, NOT SHOWN ON THESE PLANS, SHALL BE BROUGHT TO THE IMMEDIATE ATTENTION OF THE ENGINEER.
3. EXISTING UTILITIES TO REMAIN, WHICH ARE CRUSHED OR DAMAGED DURING CONSTRUCTION, SHALL BE REPLACED AT CONTRACTOR'S EXPENSE.
4. EACH SUBCONTRACTOR SHALL OBTAIN THEIR OWN PERMITS AND CONTACT THE UTILITY COMPANY FOR VERIFICATION AND LOCATION OF HOOK-UP PRIOR TO ANY WORK BEING DONE.
5. WATER:

ALL WATER SERVICE LATERALS 2 INCHES AND SMALLER SHALL BE TYPE "K" COPPER; SERVICE LATERALS LARGER THAN 2 INCHES SHALL BE DUCTILE IRON PIPE; ALL WATER LATERALS SHALL HAVE 5 FEET (MIN) OF COVER. ALL BACKFLOW PREVENTION DEVICES SHALL BE APPROVED BY THE LOCAL WATER DEPARTMENT.

THE MECHANICAL/PLUMBING DESIGNER IS TO ENSURE THAT ADEQUATE PRESSURE AND CAPACITY IS AVAILABLE TO SERVICE THE SITE. EXISTING WATER MAIN PRESSURE & CAPACITY IS UNKNOWN AT THIS TIME.
6. STORM:

ALL STORM SEWERS SHALL CONFORM TO ODOT ITEM 707.33 OR ITEM 706.02.

ALL CATCH BASINS SHALL BE CONSTRUCTED AS SHOWN ON THESE DRAWINGS AND DETAILED PER THE ODOT STANDARD DRAWINGS AND CURRENT CONSTRUCTION AND MATERIAL SPECIFICATIONS. CATCH BASIN GRATES WITHIN PAVEMENT TO BE TRAFFIC BEARING.

DOWNSPOUTS AND ROOF DRAINS SHALL CONNECT DIRECTLY TO THE STORM SEWER SYSTEM WITH A MINIMUM 6" DIAMETER PIPE WITH A MINIMUM 1% SLOPE. REFER TO ARCHITECTURAL PLANS FOR EXACT DOWNSPOUT LOCATION.
7. SANITARY:

SANITARY LATERAL SHALL BE A MINIMUM 6" DIAMETER PVC PIPE, ASTM D3034, SDR35, WITH RUBBER GASKET JOINTS OR APPROVED EQUAL. LATERAL SHALL BE CONSTRUCTED WITH A MINIMUM OF 1% SLOPE (10% MAX), AND HAVE A MINIMUM OF 4 FOOT OF COVER.

ROOF DRAINS, FOUNDATION DRAINS AND OTHER CLEAN WATER CONNECTIONS TO THE SANITARY SEWER ARE PROHIBITED.

THE PLUMBING CONTRACTOR SHALL BE RESPONSIBLE FOR PROVIDING ADEQUATE SLOPE OF BUILDING SEWERS TOWARDS THE LATERAL SEWER IN STRICT ACCORDANCE WITH THE GOVERNING AUTHORITIES.

CLEAN-OUTS TO BE INSTALLED AT ALL PIPE BENDS AND ANGLES, UNLESS A MANHOLE IS INDICATED.
8. THE CONTRACTOR SHALL VERIFY THE SIZE, LOCATION, INVERT ELEVATION, AND CONDITION OF ALL EXISTING UTILITIES AT THE POINT OF CONNECTIONS PRIOR TO ANY INSTALLATION. THE CONTRACTOR IS TO ENSURE EXISTING UTILITIES ARE IN GOOD WORKING ORDER. IF ELEVATIONS DIFFER FROM WHAT IS SHOWN ON THIS DRAWING, THE CONTRACTOR SHALL NOTIFY ENGINEER IMMEDIATELY PRIOR TO ANY CONSTRUCTION.
9. 10 FT-HORIZONTAL AND 1.5 FT-VERTICAL (MINIMUM) CLEARANCE IS REQUIRED BETWEEN SANITARY, STORM & WATER LINES.
10. GAS, ELECTRIC, TELEPHONE & CABLE LINES SHOWN FOR REFERENCE ONLY AND ARE DESIGNED BY OTHERS. CONTRACTOR TO INSTALL PER RESPECTIVE UTILITY APPROVED SET OF PLANS.
11. COORDINATE UTILITY CONNECTIONS AT THE BUILDING WITH THE MECHANICAL DRAWINGS.

GENERAL NOTES

1. WITHIN THE SUBJECT PROPERTY, THE INTENT IS TO HAVE A CLEAN, CLEAR SITE, FREE OF ALL EXISTING ITEMS NOTED TO BE REMOVED IN ORDER TO PERMIT THE CONSTRUCTION OF THE NEW PROJECT.
2. WHERE EXISTING ITEMS ARE SHOWN TO REMAIN, CARE SHOULD BE TAKEN TO ENSURE PROTECTION OF THAT ITEM FROM DAMAGE. ANY ITEMS DISTURBED BY CONTRACTOR SHALL BE REPLACED BY THE CONTRACTOR AT HIS EXPENSE TO A CONDITION EQUAL TO OR BETTER THAN EXISTING AND TO THE SATISFACTION OF THE OWNER OF THE ITEM.
3. THE CONTRACTOR SHALL BE RESPONSIBLE FOR ALL MEANS, METHODS, AND MATERIALS OF CONSTRUCTION TO COMPLETE PROPOSED CONSTRUCTION.
4. ANY APPARENT DISCREPANCIES OR QUESTIONS IN CONTRACT DOCUMENTS ARE TO BE BROUGHT TO THE ATTENTION OF THE OWNER'S REPRESENTATIVES IMMEDIATELY.
5. TRAFFIC SHALL BE MAINTAINED ON ALL ADJOINING STREETS AT ALL TIMES. TRAFFIC CONTROL SHALL BE MAINTAINED IN ACCORDANCE WITH THE OHIO MANUAL OF UNIFORM TRAFFIC CONTROL DEVICES.
6. ANY MODIFICATIONS TO THE WORK SHOWN ON THE PLANS MUST HAVE PRIOR WRITTEN APPROVAL FROM THE OWNER AND REVIEW AGENCIES.

GENERAL NOTES – EARTHWORK

3. THE CONTRACTOR SHALL INSTALL ALL SEDIMENTATION CONTROLS TO MINIMIZE SOIL EROSION AND OFF-SITE SILTATION BEFORE ANY CLEARING, GRUBBING OR EARTHWORK HAS BEGUN. REFERENCE THE EROSION AND SEDIMENT CONTROL PLAN FOR EROSION CONTROL STRUCTURES AND SPECIFICATIONS.
2. ALL TIMBER, LOGS, BRUSH, RUBBISH, AND VEGETATIVE MATTER WHICH WILL INTERFERE WITH THE GRADING OPERATION OR AFFECT THE PLANNED STABILITY OF FILL AREAS SHALL BE REMOVED FROM THE PROJECT CONSTRUCTION AREA.
3. ALL UNSUITABLE SOILS ENCOUNTERED IN PROPOSED PAVEMENT AREAS SHALL BE REMOVED AND REPLACED WITH COMPACTED MATERIAL APPROVED BY THE ENGINEER.
4. THE CONTRACTOR SHALL MAINTAIN POSITIVE DRAINAGE AT ALL TIMES AND SHALL BACKFILL AND GRADE EXCAVATED AREAS SO AS TO ELIMINATE PONDING ON THE SITE.
5. THE CONTRACTOR SHALL BE RESPONSIBLE FOR THE IMPORTATION OF ANY BORROW MATERIAL NECESSARY TO COMPLETE THE JOB.
6. THE CONTRACTOR SHALL BE RESPONSIBLE FOR THE OFF-SITE DISPOSAL OF ANY AND ALL EXCESS OR UNSUITABLE MATERIAL NOT USED ON THE JOB SITE.
7. PROPOSED PAVEMENT AREAS ARE TO BE PROOF-ROLLED PER SPECIFICATIONS IMMEDIATELY PRIOR TO CONSTRUCTION. IF ANY AREAS ARE FOUND TO BE "SOFT" OF "SPONGY", THE CONTRACTOR IS TO COORDINATE THE REMOVAL OR PROCEDURE WITH THE GEOTECHNICAL ENGINEER.
8. PROPOSED ELEVATIONS SHOWN SHALL NOT BE CHANGED WITHOUT APPROVAL OF THE ENGINEER.
9. TOPSOIL SHALL BE STRIPPED AND STOCKPILED FOR USE IN FINAL LANDSCAPING AND IN AREAS SELECTED BY OWNER.
10. UNLESS OTHERWISE INDICATED AT A SPECIFIC LOCATION, ALL FINISHED GRADES AT THE LIMITS OF NEW WORK ARE TO CONFORM TO AND MATCH EXISTING GRADES.
11. SITE GRADING SHALL PROVIDE POSITIVE DRAINAGE TO CATCH BASINS OR SHEET FLOW OFF OF AREAS, THUS PREVENTING THE PONDING OF WATER ON SITE.
12. PRIOR TO PLACEMENT OF ANY COMPACTED FILLS, PROCTOR CURVES SHALL BE ESTABLISHED FROM PROPOSED BORROW MATERIAL SAMPLES.
13. ALL COMPACTED FILLS RELATED TO THE CONSTRUCTION OF THE PROPOSED PROJECT SHALL BE PLACED IN ACCORDANCE WITH ODOT ITEM 203. DURING CONSTRUCTION, THESE COMPACTED FILLS SHALL BE TESTED USING THE NUCLEAR DENSOMETER METHOD. COMPACTATION REQUIREMENT SHALL BE IN ACCORDANCE WITH THE GEOTECHNICAL ENGINEER'S RECOMMENDATIONS.
14. IF THE TOP SURFACE OF FILL BECOMES TOO WET OR FROZEN, THIS MATERIAL MUST BE REMOVED PRIOR TO PLACEMENT OF THE NEXT LAYER OF FILL.

CITY OF MASSILLON SANITARY SEWER SPECIFICATIONS

SANITARY SEWER CONSTRUCTION PROPOSED FOR THIS PROJECT SHALL CONFORM TO THE LATEST CITY OF MASSILLON STANDARDS AND CONSTRUCTION AND MATERIALS SPECIFICATIONS, TEN STATE STANDARDS, AND THE LATEST EDITION OF THE ODOT CMS, OR MODIFIED BY THE CONTRACT DRAWINGS. IF A CONFLICT ARISES BETWEEN SAID STANDARDS IT SHALL BE AT THE DISCRETION OF THE CITY OF MASSILLON ENGINEER AS TO WHICH STANDARD SHALL GOVERN. THE PROJECT CONTRACT DRAWINGS SHALL GOVERN UNLESS NOTED OTHERWISE.

SANITARY GRAVITY SEWER PIPE AND FITTINGS SHALL BE PVC SDR 35 CONFORMING TO ASTM D-3034 UNLESS OTHERWISE NOTED. PVC COMPOUNDS SHALL CONFORM TO ASTM D-1784 PVC PIPE AND FITTINGS SHALL HAVE BELL AND SPIGOT TYPE JOINTS CONFORMING TO ASTM-3212 AND GASKETS CONFORMING TO ASTM F-477.

BACKFILL IN SEWER TRENCHES SHALL CONFORM TO ODOT ITEM 603.10 AND BE PLACED IN LAYERS SUFFICIENT TO MEET THE COMPACTION REQUIREMENT OF 100% OF MAXIMUM LABORATORY DRY DENSITY PER ASTM D-698 AND THOROUGHLY COMPACTED WITH MACHINE MOUNDED COMPACTION EQUIPMENT. THE PLACING OF BACKFILL MATERIAL SHALL BE CONTINUED UNTIL THE TRENCH IS ENTIRELY FILLED AND COMPACTED WITH THE APPROVED GRANULAR MATERIAL TO THE GRADE CALLED FOR ON THE CONTRACT DRAWINGS. EXCAVATED MATERIAL CONFORMING TO ODOT 203 SHALL BE USED FOR BACKFILLING EXISTING STRUCTURES (AFTER REMOVAL) ONLY. CRUSHED GRAVEL CONFORMING TO GRADATION REQUIREMENTS OF ODOT ITEM 304 OR APPROVED EQUAL AS SHOWN ON ODOT TABLE 703-1 SHALL BE USED FOR BACKFILLING ALL SEWER TRENCH AREAS SHOWN ON THE PLANS AND AS DIRECTED BY THE CITY OF MASSILLON ENGINEER. FLOODING, JETTING, OR PUDDLING OF BACKFILL MATERIAL WILL NOT BE PERMITTED UNLESS APPROVED BY THE CITY OF MASSILLON ENGINEER.

CLEAN WATER STATEMENT

ROOF DRAINS, FOUNDATION DRAINS, AND OTHER CLEAN WATER CONNECTIONS TO THE SANITARY SEWER ARE PROHIBITED.

AQUA OHIO-WATER LINE NOTES

3. WATERLINES AND APPURTENANCES SHALL BE CONSTRUCTED ACCORDING TO AQUA OHIO SPECIFICATIONS AND DETAILS IN EFFECT AT TIME OF CONSTRUCTION. ANY SITUATION REQUIRING A MODIFICATION TO SAID STANDARDS & SPECIFICATIONS MUST FIRST BE APPROVED BY AQUA OHIO.
2. PRIOR TO START OF CONSTRUCTION, THE CONTRACTOR SHALL SCHEDULE A PRE-CONSTRUCTION MEETING WITH AQUA OHIO.
3. THE CONTRACTOR SHALL ALERT THE UTILITIES PROTECTION SERVICE AT LEAST 48 HOURS PRIOR TO START OF CONSTRUCTION.
4. APPROVAL BY AQUA OHIO CONSTITUTES NEITHER EXPRESSED NOR IMPLIED WARRANTIES AS TO FITNESS, ACCURACY, OR SUFFICIENCY OF PLANS, DESIGNS OR SPECIFICATIONS.
5. ALL ROUGH GRADING TO WITHIN SIX (6) INCHES OF FINISHED GRADE SHALL BE COMPLETED WITHIN EASEMENTS AND RIGHTS-OF-WAY PRIOR TO WATERLINE CONSTRUCTION.
6. MINIMUM VERT. CLEARANCE BETWEEN WATERLINE AND SANITARY SEWER SHALL BE 18 INCHES. MINIMUM HORIZ. SEPARATION SHALL BE 10 FT. MINIMUM VERT. CLEARANCE BETWEEN WATERLINE AND STORM SEWER SHALL BE 12 INCHES. MINIMUM HORIZ. SEPARATION SHALL BE 4 FT.
7. WATER SERVICE LINES SHALL TERMINATE 5 FT. FROM THE BUILDING FOUNDATION.
8. DCP WATER MAIN PIPE SHALL CONFORM TO AWWA C-151, AWWA C-111 FOR JOINTS.
9. WATER MAIN PRESSURE TESTING SHALL CONFORM TO AWWA C-600.
10. WATER MAIN DISINFECTION SHALL CONFORM TO AWWA C-651.
11. MINIMUM COVER OVER WATERLINES SHALL BE FOUR (4) FT.
12. HYDRANTS SHALL BE MUELLER A-423 CENTURION OR APPROVED EQUAL 3-WAY, WITH 4 1/2" NOZZLE CONNECTION FOR FIRE HOSE.
13. TYPE "T" HYDRANT REFERS TO 90 DEGREE TEE ASSEMBLY OFF OF MAIN LINE, COMPLETE WITH ALL VALVES AND APPURTENANCES. THE CONTRACTOR SHALL REFER TO AQUA OHIO SPECIFICATIONS AND DETAILS.
14. FIRE HYDRANTS SHALL BE FIELD PAINTED RED & YELLOW (2 COATS).
15. HYDRANTS, HYDRANT VALVES, MAINLINE VALVE BOXES AND CURB BOXES SHALL NOT BE LOCATED WITHIN SIDEWALKS, DRIVEWAYS, OR APRONS.
16. BLOW-OFF HYDRANTS SHALL HAVE 2" INLET, 2" OUTLET AND RISER PIPE, AND SHALL BE ECLIPSE NO. TF500, OR APPROVED EQUAL.
17. BACKFILLING BELOW OR WITHIN 3 FT OF EXISTING OR PROPOSED ROADWAY, DRIVEWAY, SIDEWALK OR WALL SHALL BE TYPE 1 OR TYPE 2 STRUCTURAL BACKFILL IN ACCORDANCE WITH THE BACKFILL REQUIRED FOR STORM SEWER, ODOT ITEM 703.11.
18. ALL PIPE JOINTS WITHIN 40 LF OF ANY DEAD END SHALL BE RESTRAINED BY USING FIELD LOCK GASKETS, OR MEGA LUGS ON MECHANICAL JOINTS. ALL PIPE JOINTS WITHIN 40 LF OF ANY BEND, FITTING, VALVE OR TEE SHALL ALSO BE RESTRAINED BY USING FIELD LOCK GASKETS OR MEGA LUGS. IN ADDITION, POURED-IN-PLACE CONCRETE THRUST BLOCKS SHALL BE PROVIDED AT ALL BENDS, TEES AND PLUGS TO PREVENT MOVEMENT OF THE WATER LINE. BLOCKING SHALL BE CAREFULLY PLACED TO ENSURE IT IS POSITIONED PROPERLY TO WITHSTAND THE RESULTANT FORCES AT EACH BEND, FITTING, ETC. AND SHALL BEAR ON STABLE UNDISTURBED GROUND CAPABLE OF WITHSTANDING THE POTENTIAL LOAD.
19. A PRESSURE REDUCING VALVE WILL BE NEEDED AFTER EACH METER.

AQUA OHIO MATERIAL SPECIFICATIONS

3. DUCTILE IRON PIPE: PUSH-ON JOINTS, CEMENT LINED, PRESSURE CLASS 350 FOR 12 INCH THROUGH 12 INCH, THICKNESS CLASS 52 FOR 16 INCH, MANUFACTURING STANDARDS AWWA C150 AND C151. POLYETHYLENE ENCASEMENT SHALL BE INSTALLED ON ALL DUCTILE PIPE AND FITTINGS.
4. DUCTILE IRON FITTINGS (TEES, CROSSES, BENDS, REDUCERS, SLEEVES, COUPLINGS AND PLUGS.): MECHANICAL JOINT, TEES, CROSSES, BENDS AND REDUCERS ARE TO BE CEMENT LINED; WORKING PRESSURE RATING 250 PSI, MANUFACTURING STANDARDS ANSI A21.53, ANSI A21.4 AND ANSI A21.10. COMPACT STYLE IS ACCEPTABLE. RETAINER GLANDS SHALL BE INSTALLED WHEREVER THERE IS A POSSIBILITY OF JOINT SEPARATION.
5. FIRE HYDRANTS: POST TYPE, BREAKABLE FLANGE DESIGN FOR TRAFFIC COLLISIONS, 5 1/4" DIAMETER MAIN VALVE, ONE 4 1/2" PUMPER AND TWO 2 1/2" HOSE NOZZLES, 6" MJ INLET, MAIN VALVE TO OPEN LEFT, DIRECTION OF OPENING TO BE INDICATED WITH ARROW CAST ON HYDRANT, TO BE DESIGNED FOR 5 FOOT TRENCH, NATIONAL STANDARD THREADS ON NOZZLES, O-RING PACKING PREFERRED, TYPE 304 STAINLESS STEEL BOLTS AND NUTS, OPERATING NUT AND NUT ON CAPS: 1 1/2" PENTAGON, COLOR YELLOW PAINT ON BODY TRIMMED WITH RED PAINT ON BONNET AND CAPS, AWWA STANDARD C502, MUELLER CENTURION A423, US PIPE M-94, CLOW MEDALLION OR AMERICAN DARLING B-84-B.
6. TAPPING VALVES: RESILIENT SEAT, IRON BODY, STAINLESS STEEL BONNET BOLTS AND NUTS, MECHANICAL JOINT ACCESSORIES, NON-RISING STEM, FOR UNDERGROUND SERVICE, O-RING PACKING PREFERRED, OPEN RIGHT (CLOCKWISE) 2 INCH SQUARE OPERATING NUT, MANUFACTURING STANDARDS AND PRESSURE RATINGS AWWA SPECIFICATION C500.
7. 8" THROUGH 12" GATE VALVES: RESILIENT SEAT, IRON BODY, STAINLESS STEEL BONNET BOLTS AND NUTS, MECHANICAL JOINT ACCESSORIES, NON-RISING STEM, FOR UNDERGROUND SERVICE, O-RING PACKING PREFERRED, OPEN RIGHT (CLOCKWISE), 2 INCH SQUARE OPERATING NUT, MANUFACTURING STANDARDS AND PRESSURE RATINGS AWWA C509, MUELLER A-2360 OR EQUAL.
8. VALVE BOXES: TWO PIECE, CAST IRON, SCREW TYPE FOR ADJUSTABLE HEIGHT, HEIGHT RANGE TO BE APPROXIMATELY 36 TO 60 INCHES. THEY ARE TO INCLUDE A WELL FITTING CAST IRON LID, THE WORD "WATER" TO BE CAST ON LID, B SIZE.
9. 2" WATER MAIN: 2" WATER MAIN SHALL BE SOFT DRAWN TYPE "K" COPPER TUBING OR HIGH DENSITY POLYETHYLENE PLASTIC (HDPE), COPPER TUBE SIZE, AS CALLED OUT ON THE PLAN. IF HDPE IS USED, IT SHALL BE 200 PSI, SDR 9 WITH MARKING TAPE AND A 12 GAUGE COPPER TRACER WIRE LAID IN THE TRENCH. BRASS COMPRESSION FITTINGS SHALL BE USED. STAINLESS STEEL STIFFENERS ARE NECESSARY AT EACH JOINT.
10. POLYETHYLENE ENCASEMENT: EIGHT MIL THICK POLYETHYLENE TUBE MANUFACTURED IN ACCORDANCE WITH ANSI/AWWA C105/A21.5. POLYETHYLENE ADHESIVE TAPE, 1 1/2" WIDE, IS TO SEAL JOINTS.
11. BLOW OFF ASSEMBLIES: KUPFERLE FOUNDRY TF500 OR APPROVED EQUAL. INSTALL IN VALVE BOX. INSTALL 2" CURB STOP WITH CURB BOX AHEAD OF EACH BLOW OFF.



<p>C6.1</p> <p>SITE NOTES & DETAILS</p> <p>THE FIRST NORTH BUILDING</p> <p>FOR: FIRST NORTH HOLDINGS, LLC</p> <p>LOCATED IN SECTION 23E, LOTS 41, 42, 43, PT LOT 51, LOTS 56, 57 AND 623</p> <p>CITY OF MASSILLON, STARK COUNTY, OH</p>	<p>SCALES</p> <p>HORIZ:</p> <p>VERT:</p> <p>CONTOUR INT:</p>		<p>DESIN BY: <u> </u></p> <p>DRWN BY: <u> </u></p> <p>RVMD BY: <u> </u></p> <p>FLD BK: <u>591</u></p> <p>BK PG: <u>69</u></p> <p>DATE: <u>05/20/16</u></p>	<p>REV. BY: <u> </u> DATE: <u> </u></p> <p>REV. BY: <u> </u> DATE: <u> </u></p> <p>REV. BY: <u> </u> DATE: <u> </u></p> <p>REV. BY: <u> </u> DATE: <u> </u></p>	<p>RESPONSE TO CITY ENGINEER COMMENTS</p>	<p>HAMMONTREE & ASSOCIATES, LIMITED</p> <p>ENGINEERS, PLANNERS, SURVEYORS</p> <p>5233 STONEHAM RD. NORTH CANTON, OH 44720 PHN: (330) 499-8817 FAX: (330) 499-0149 TOLL FREE: 1-800-394-8817 www.hammontree-engineers.com</p>
---	--	--	---	---	---	--

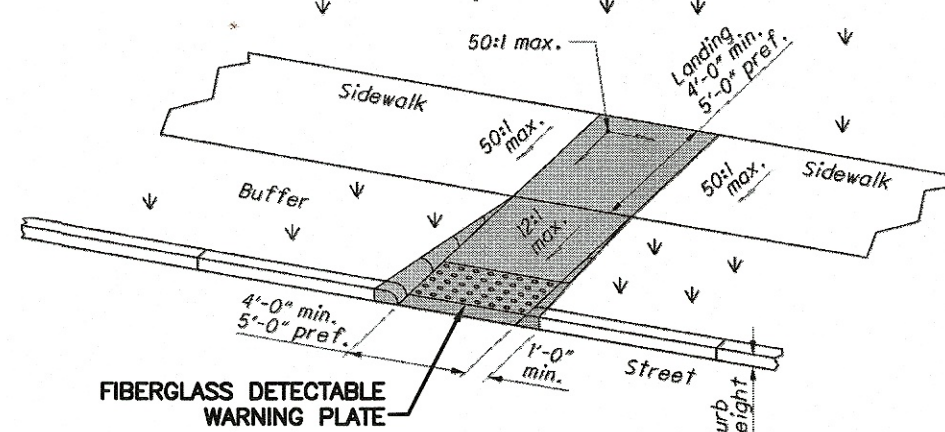
5.00'

2.0% → (TYP.)

204" →

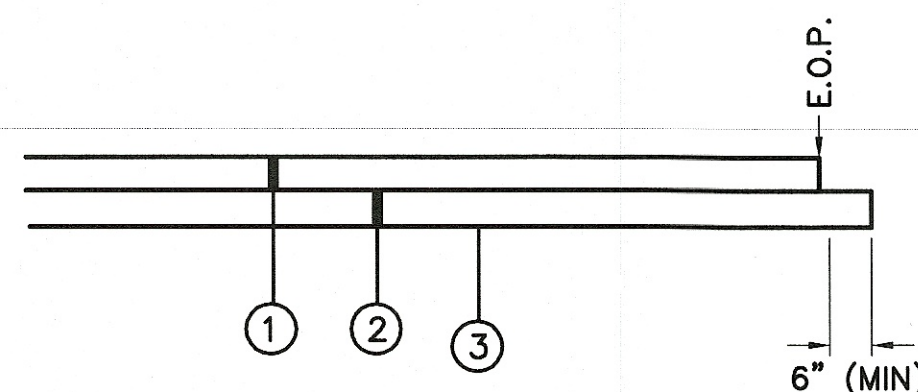
ROAD DOT 204

(FROM ODOT SCD BP-7.1)



Type A2 (Perpendicular with returned curb)

N.T.S.

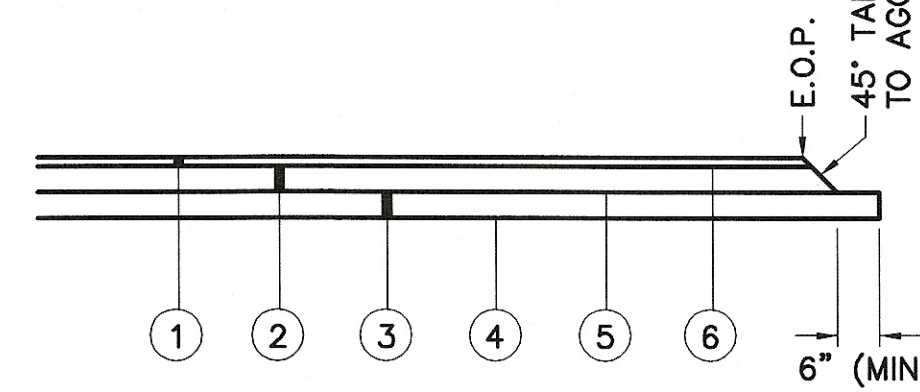


- | | |
|-------------|--------------------|
| 1) ITEM 452 | 6" PLAIN CONCRETE |
| 2) ITEM 304 | 6" AGGREGATE BASE |
| 3) ITEM 204 | COMPACTED SUBGRADE |

CONTRACTOR TO SUBMIT SHOP DRAWINGS OF PAVEMENT
JOINT LOCATIONS.

ALL ITEMS FROM STATE OF OHIO DEPARTMENT
OF TRANSPORTATION, CONSTRUCTION & MATERIAL
SPECIFICATIONS, JAN. 1, 2013.

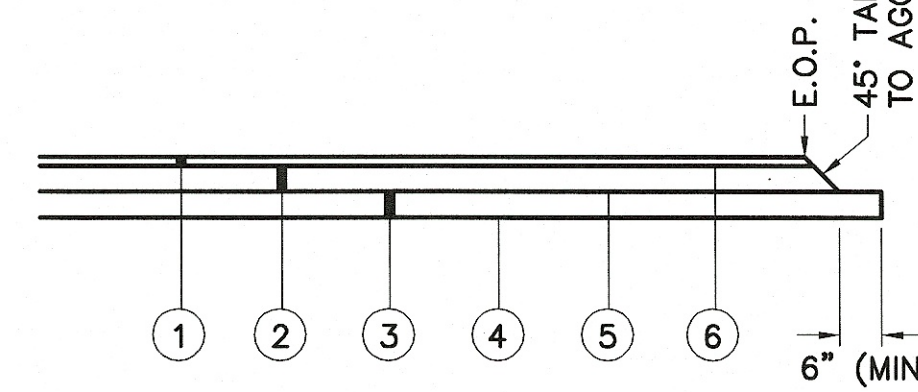
N.T.S.



- | | |
|-------------|----------------------------------|
| 1) ITEM 448 | 1-1/2" ASPHALT CONCRETE, SURFACE |
| 2) ITEM 448 | 2-1/2" ASPHALT CONCRETE BASE |
| 3) ITEM 304 | 6" AGGREGATE BASE |
| 4) ITEM 204 | COMPACTED SUBGRADE & PROOF ROLL |
| 5) ITEM 408 | PRIME COAT (0.4 GAL./SQ. YD.) |
| 6) ITEM 407 | TACK COAT (0.1 GAL./SQ. YD.) |

ALL ITEMS FROM STATE OF OHIO DEPARTMENT
OF TRANSPORTATION, CONSTRUCTION & MATERIAL
SPECIFICATIONS, JAN. 1, 2013.

N.T.S.



- | | |
|-------------|----------------------------------|
| 1) ITEM 448 | 1-1/2" ASPHALT CONCRETE, SURFACE |
| 2) ITEM 448 | 4-1/2" ASPHALT CONCRETE BASE |
| 3) ITEM 304 | 6" AGGREGATE BASE |
| 4) ITEM 204 | COMPACTED SUBGRADE & PROOF ROLL |
| 5) ITEM 408 | PRIME COAT (0.4 GAL./SQ. YD.) |
| 6) ITEM 407 | TACK COAT (0.1 GAL./SQ. YD.) |

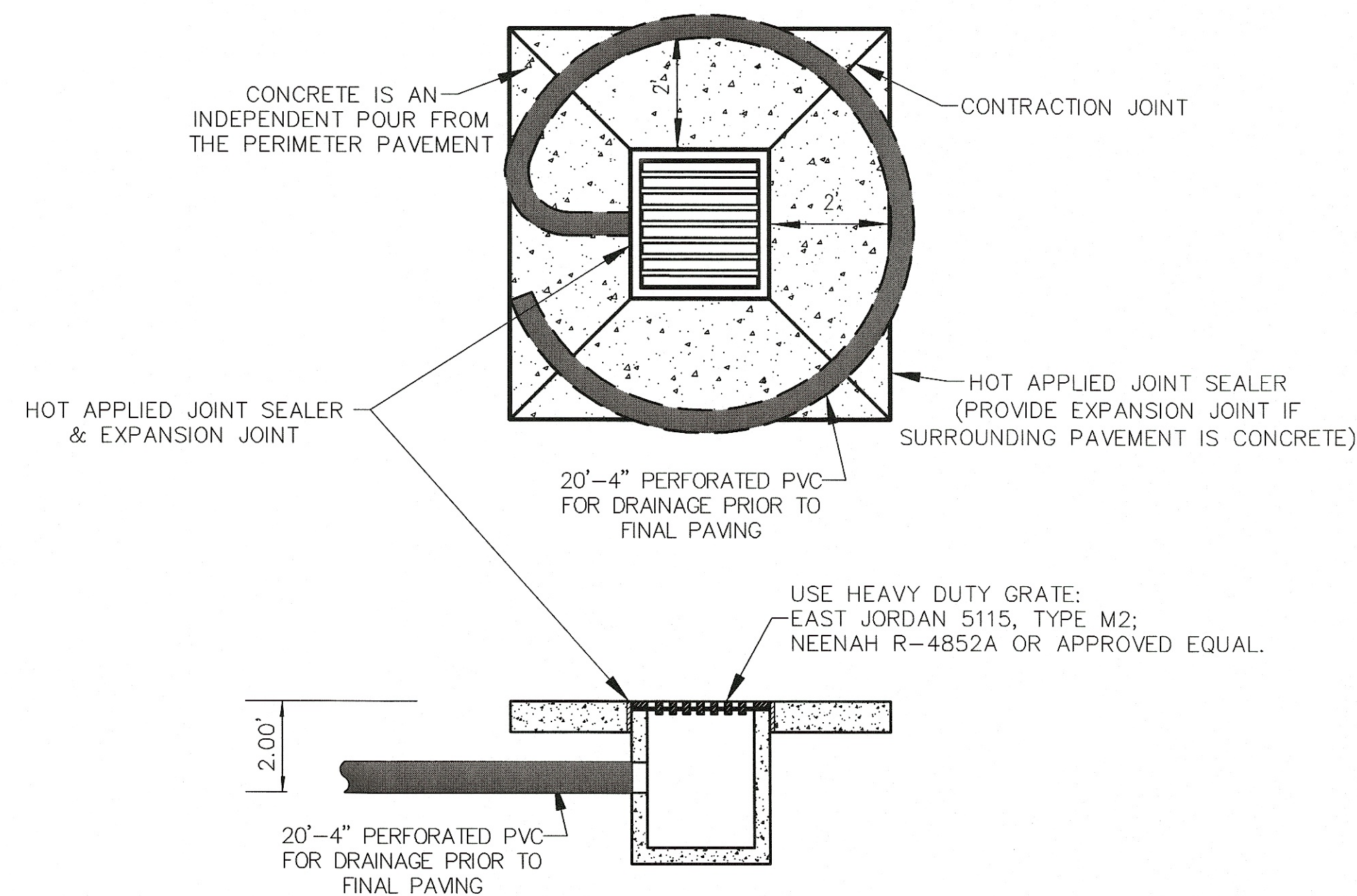
ALL ITEMS FROM STATE OF OHIO DEPARTMENT
OF TRANSPORTATION, CONSTRUCTION & MATERIAL
SPECIFICATIONS, JAN. 1, 2013.

N.T.S.

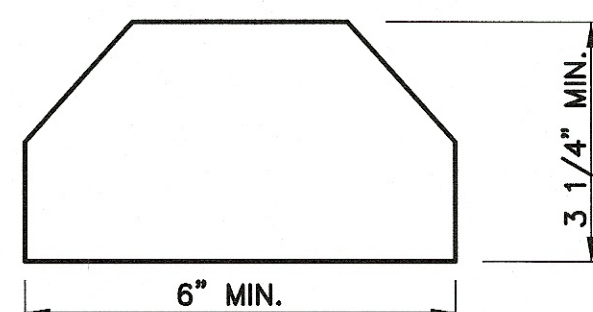
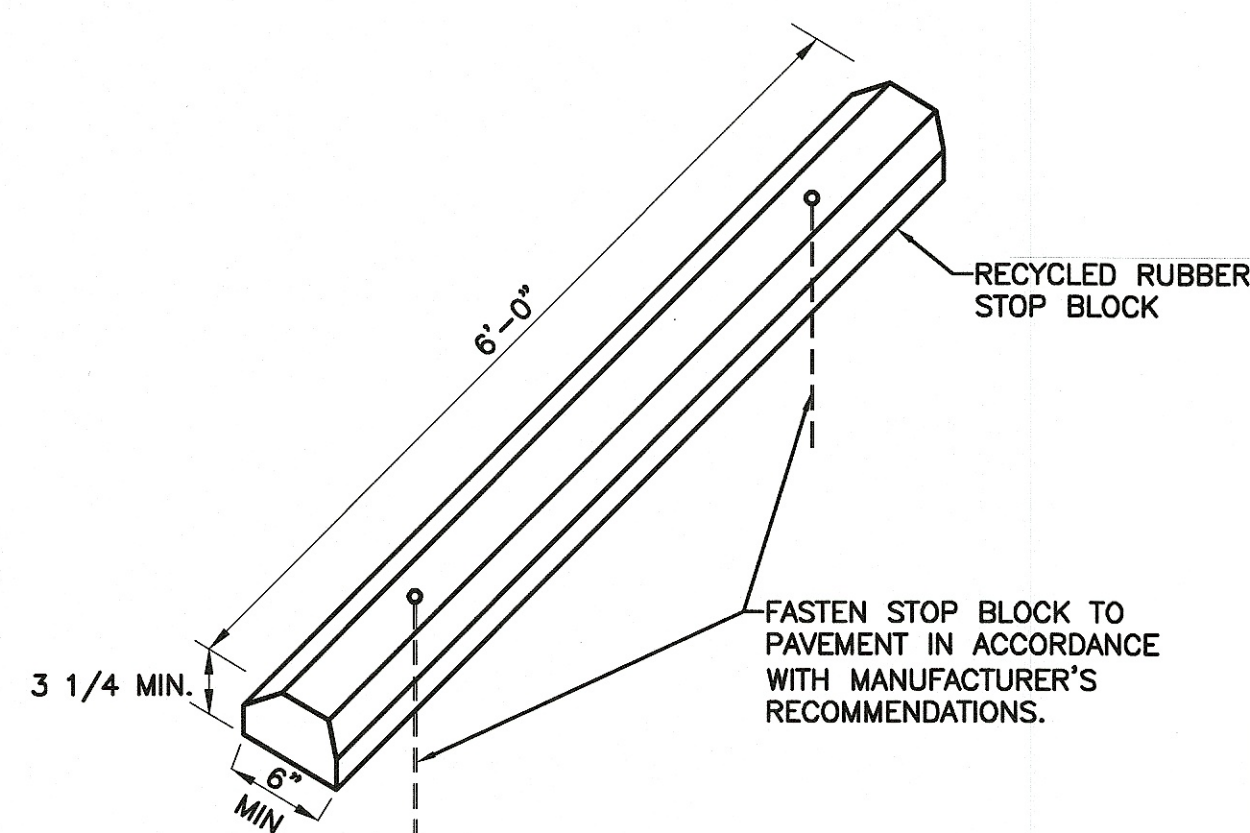
The diagram illustrates a cross-section of a pipe installation within a trench. The central element is a circular pipe labeled "PIPE". Surrounding the pipe is a bedding layer, indicated by a stippled pattern, with dimensions of 1.0' (MIN) horizontally and 0.5' (MIN) vertically. Above the bedding is a layer of "APPROVED BACKFILL MATERIAL COMPACTED IN 8\"

ODOT ITEM 703.11:
STRUCTURAL BACKFILL
TYPE 1 OR TYPE 2

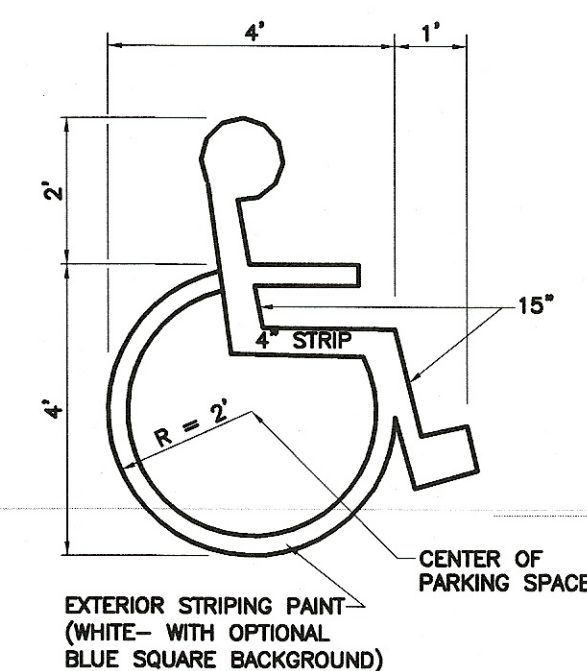
N.T.S.



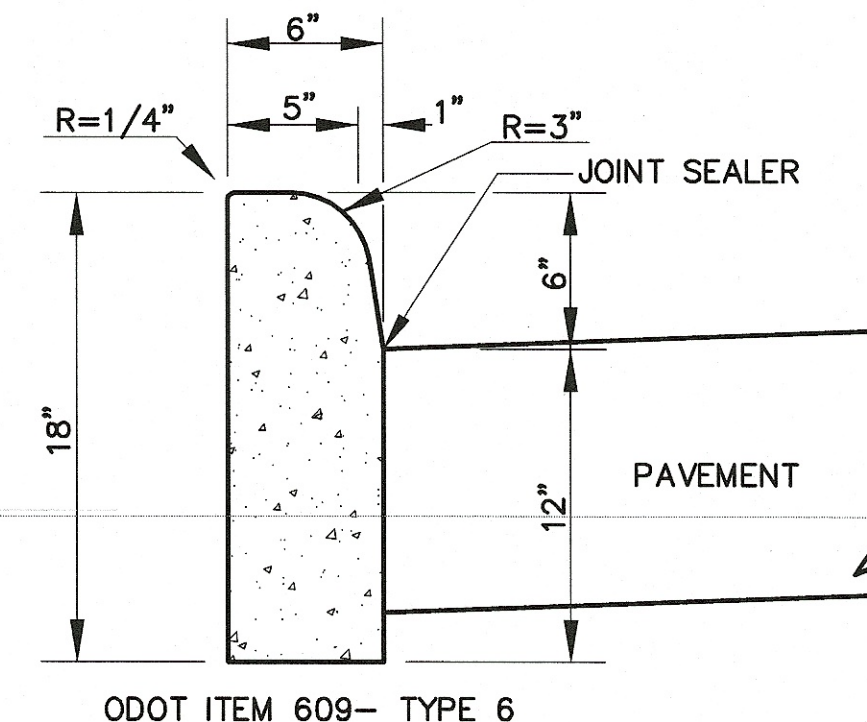
N.T.S.



N.T.S.



N.T.S.



Kathy Catazaro-Perry, Mayor

Massillon
City of Champions

CITY OF MASSILLON ENGINEERING
151 LINCOLN WAY EAST
MASSILLON, OHIO 43500-9500-1722
FAX: (330)850-1788

DRIVEWAY APPROACH
DETAIL

Diagram illustrating the Plan View of a Driveway Approach. The diagram shows a cross-section of a driveway with a central "DRIVE WIDTH" and a "DEPRESSION TRANSITION" area. A "WALK" is shown on the left side, and a "TREE LAWN" is indicated on the right. The transition area is labeled "1\"/>

DRIVE PLAN

Diagram illustrating the Detail of a Curb Transition. The diagram shows a cross-section of a curb with a "6\"/>

A-A

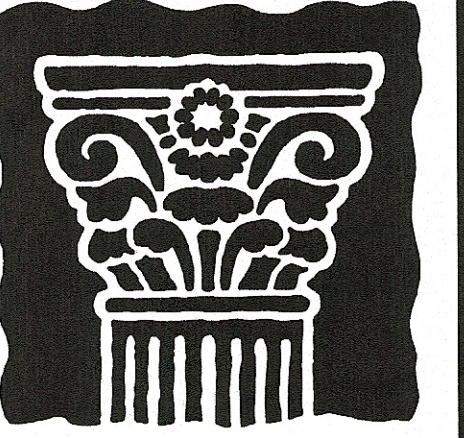
NOTE

ANY DEVIATION FROM THIS MUST BE APPROVED BY THE CITY ENGINEER.
CONCRETE SHALL BE 4000 PSI CLASS C

Diagram illustrating the Detail of a Drive Profile. The diagram shows a cross-section of a driveway with a "DRIVE APPROACH" and a "DRIVE WIDTH" of "5'-0\"/>

DRIVE PROFILE

Kathy Calzaro-Perry, Mayor **Massillon** City of Champions CITY OF MASSILLON ENGINEERING 101 LINCOLN WAY EAST MASSILLON, OHIO 43504-8530-1722 FAX (330)450-1788 TRENCH DETAIL WITHIN ROADWAY/DRIVEWAY ASPHALT: 8" CONCRETE BASE WITH 2" OF 448 ASPHALT CONCRETE BRICK: 8" CONCRETE BASE W/ BRICK SURFACE MATCHING ORIGINAL CONCRETE: 10" BASE AND SURFACE MONOLITHIC REPLACEMENT JOINT TO JOINT IF ASPHALT AC BAND existing roadway ITEM 304 AGGREGATE BASE DIB (No. 57 GRAVEL) OR 12" CLASS B GRANULAR BACKFILL AS DESIGNED ASTM D-2321 CLASS 1 BEDDING OR 12" CLASS B BEDDING FOR RIGID PIPING 12" TOP OF PIPE 3" MIN. 9" 9" TOP OF SUBBASE (*) No. 6 WIRE MAT OR 5/8" DEFORMED BARS SPACED BOTH WAYS 18" ON CENTER TRENCH WIDTH = UP TO 42" PIPE, I.D. PIPE + 20" 48" & LARGER, O.D. PIPE + 20" NOTES 1) CONCRETE BASE SHALL BE OF 1:2:4, 5 BAG MIX; PORTLAND CEMENT CONCRETE USING HIGH EARLY STRENGTH CEMENT AND IT MUST BE CURED AT LEAST 48 HRS. (*) MUST BE USED WHEN WIDTH OF TRENCH IS GREATER THAN 3' AT THE SUBBASE.



**JOHN PATRICK
PICARD
ARCHITECT, INC.**
113 LINCOLN WAY WEST
MASSILLON, OHIO 44647
PHONE (330) 471-9000
EMAIL: jpparchitect@yahoo.com

NOTE TO CONTRACTORS:
ALL CONTRACTORS ARE
RESPONSIBLE FOR ALL DRAWINGS
LISTED IN THE INDEX ON DRAWING
T-1 AS WELL AS ALL RELATED
SPECIFICATION SECTIONS. IF YOU
PREPARE A BID OR CONSTRUCT
WITHOUT THE USE OF ALL THE
DOCUMENTS PROVIDED, YOU DO SO
AT YOUR OWN RISK.

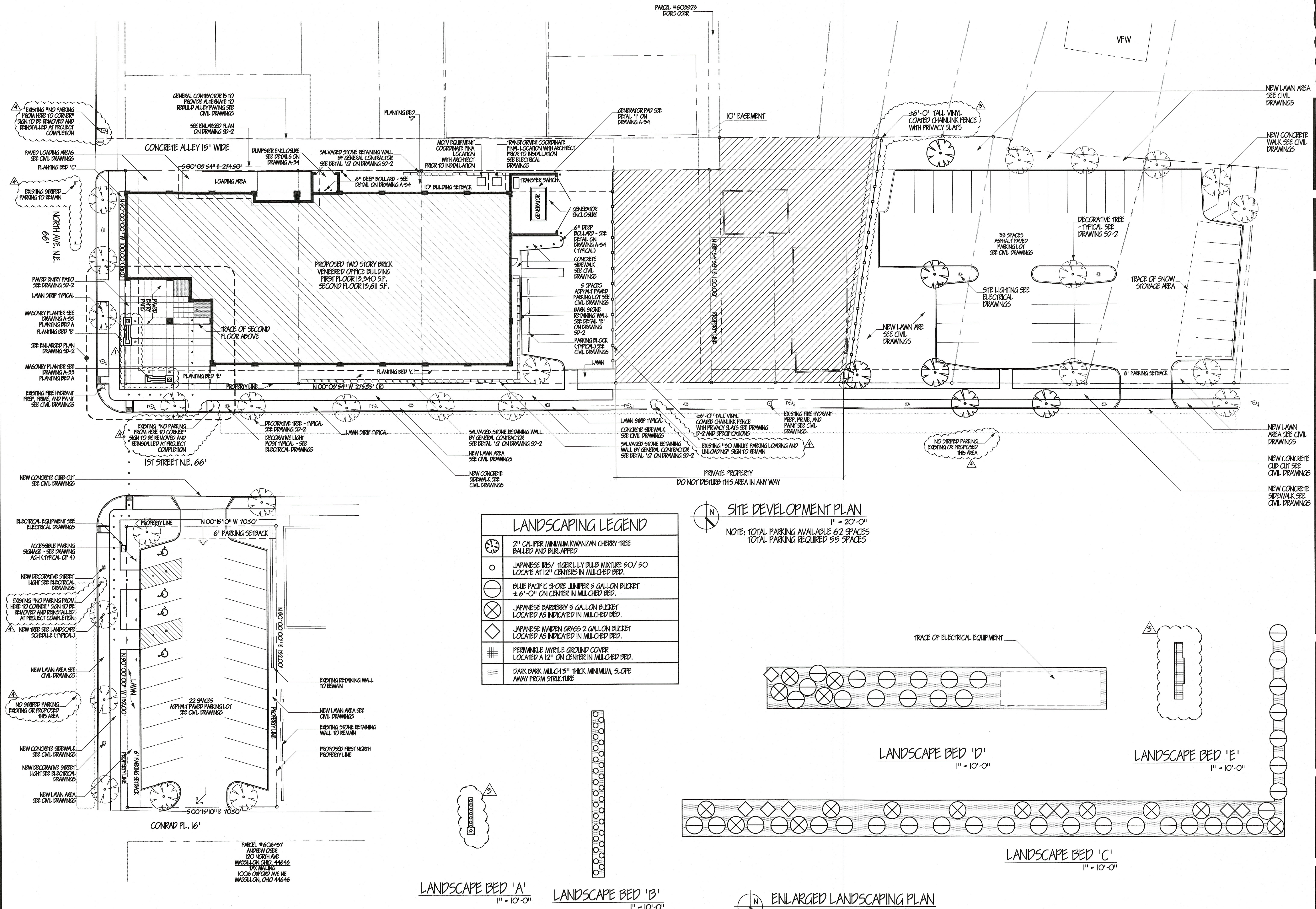
THE FIRST NORTH BUILDING

206 FIRST STREET NORTHEAST
MASSILLON, OHIO 44646

STATE OF OHIO
JOHN PATRICK
PICARD
10621
REGISTERED ARCHITECT
NAME: JOHN PATRICK PICARD
LICENSE NO. 9410621
EXPIRATION DATE: 12/31/2017

Project Number 15042
Date 05-20-16
ALL REVISIONS MADE TO THIS
DRAWING AFTER ABOVE DATE SHALL
BE DATED AND DESCRIBED BELOW.
THIS DRAWING WAS LAST REVISED
ON 05/16/16
APPENDIX #1
05/16/16
APPENDIX #2
07/15/16
ENGINEERING DEPARTMENT COMMENTS

SD1

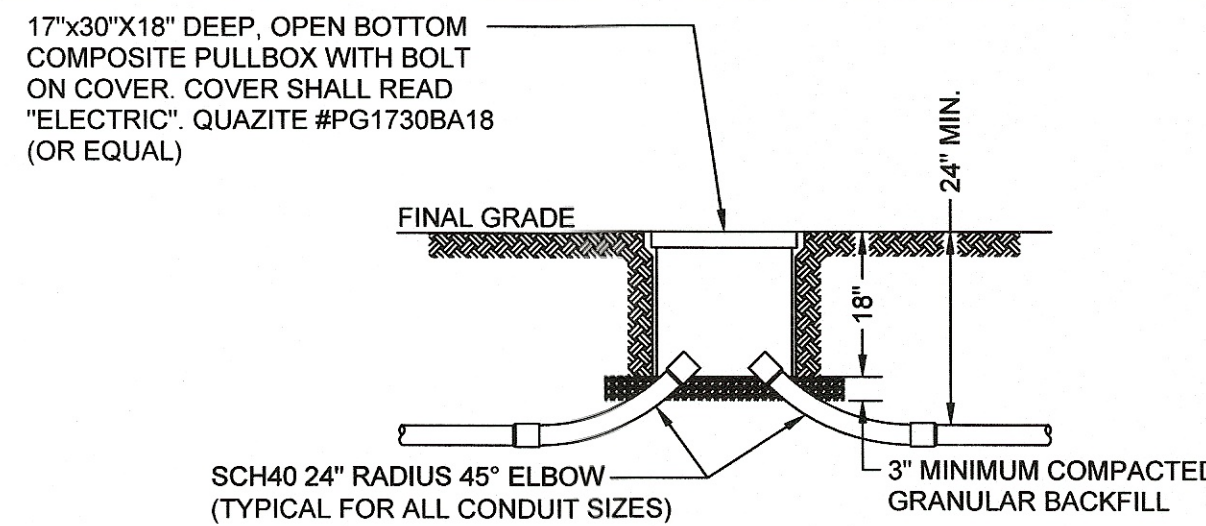


NOTE:
ALL WORK ON THIS DRAWING
ASSOCIATED WITH THE
STREETSCAPE LIGHTING IS
DEDUCT ALTERNATE 'E2'

2 WORKING DAYS
BEFORE YOU DIG

CALL TOLL FREE 800-362-2764
OHIO UTILITIES PROTECTION SERVICE

THE CONTRACTOR SHALL VERIFY THE
LOCATIONS OF UNDERGROUND UTILITIES
BY CALLING O.U.P.S. (800) 362-2764 AT LEAST 48
HOURS PRIOR TO DIGGING. THE CONTRACTOR
SHALL TAKE ALL NECESSARY STEPS TO PROTECT
THE UNDERGROUND UTILITIES FROM DAMAGE BY
CONTRACTOR'S EMPLOYEES OR SUBCONTRACTORS.



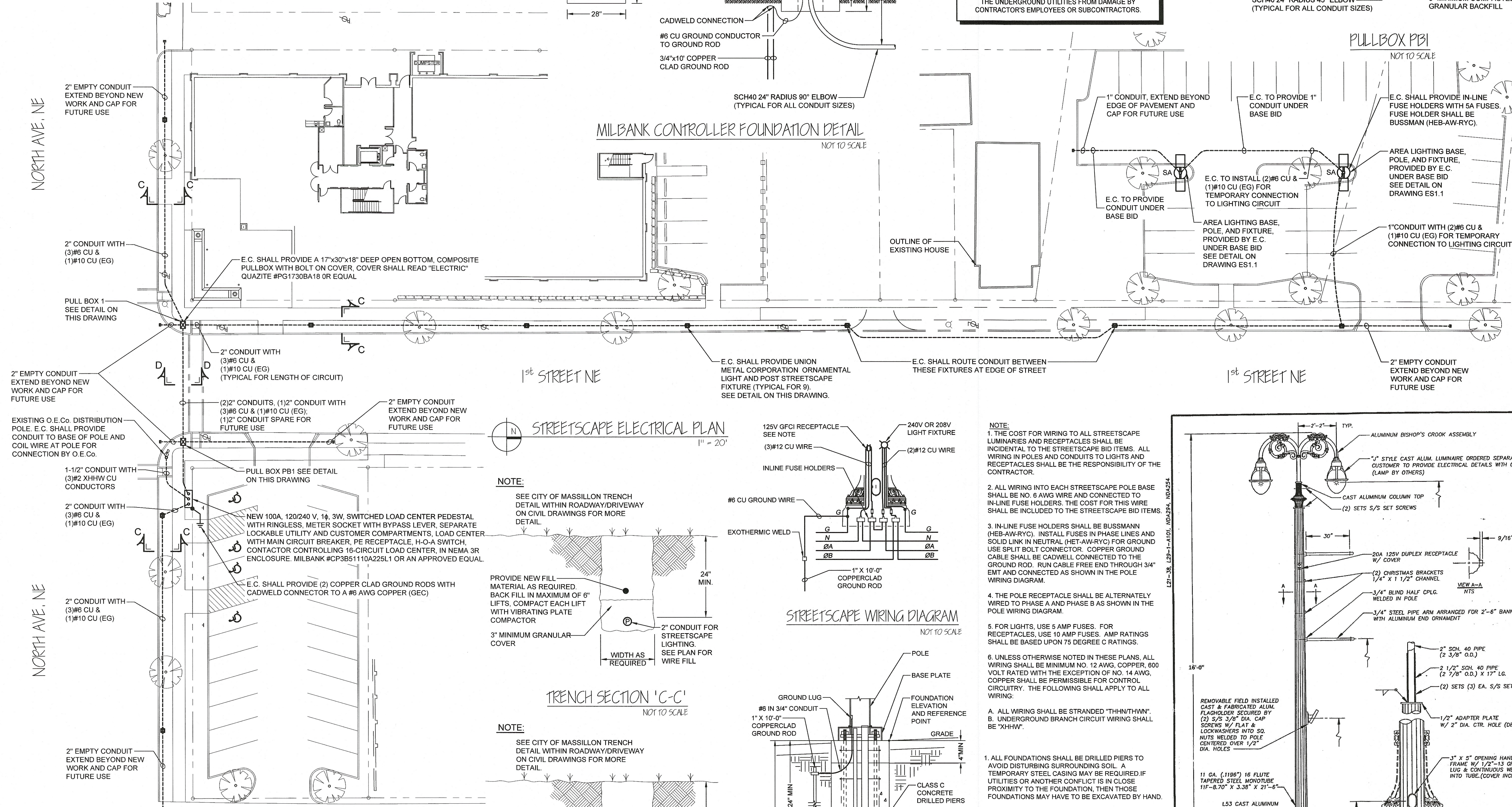
**JOHN PATRICK
PICARD
ARCHITECT, INC.**

113 LINCOLN WAY WEST
MASSILLON, OHIO 44647
PHONE (330) 471-9000
EMAIL: jpparchitect@yahoo.com

NOTE TO CONTRACTORS:
ALL CONTRACTORS ARE
RESPONSIBLE FOR ALL DRAWINGS
LISTED IN THE INDEX ON DRAWING
T-1 AS WELL AS ALL RELATED
SPECIFICATION SECTIONS. IF YOU
PREPARE A BID OR CONSTRUCT
WITHOUT THE USE OF ALL THE
DOCUMENTS PROVIDED, YOU DO SO
AT YOUR OWN RISK.

NORTH AVE. NE

NORTH AVE. NE

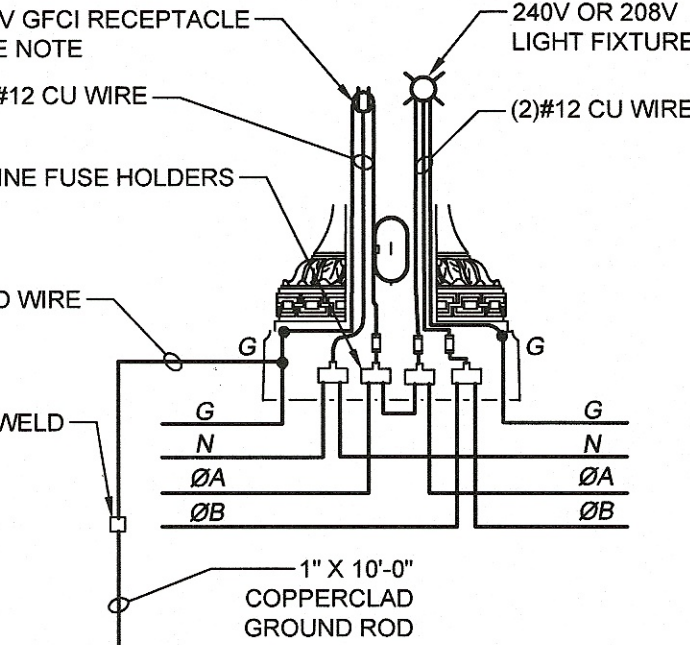


NOTE:
SEE CITY OF MASSILLON TRENCH
DETAIL WITHIN ROADWAY/DRIVEWAY
ON CIVIL DRAWINGS FOR MORE
DETAIL.

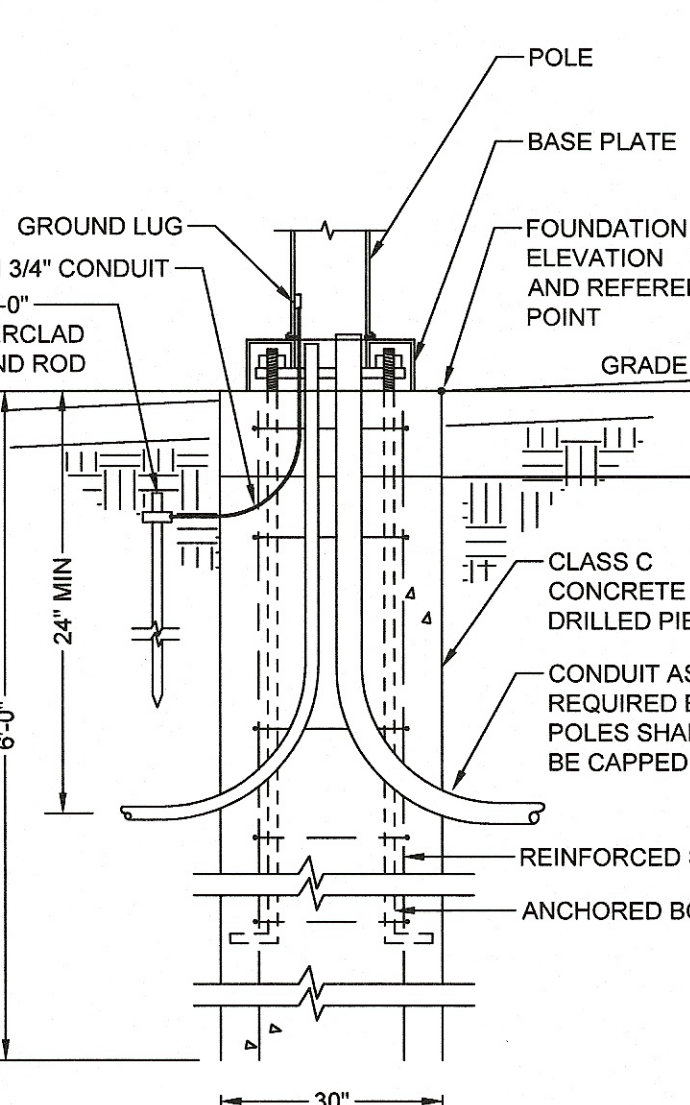
PROVIDE NEW FILL
MATERIAL AS REQUIRED.
BACK FILL IN MAXIMUM OF 6\"/>

NOTE:
SEE CITY OF MASSILLON TRENCH
DETAIL WITHIN ROADWAY/DRIVEWAY
ON CIVIL DRAWINGS FOR MORE
DETAIL.

PROVIDE NEW FILL
MATERIAL AS REQUIRED.
BACK FILL IN MAXIMUM OF 6\"/>



STREETSCAPE WIRING DIAGRAM
NOT TO SCALE



STREETSCAPE FOUNDATION DETAIL
NOT TO SCALE

NOTE:
COORDINATE CONFIGURATION OF STREETSCAPE POLE
FOUNDATIONS WITH ARCHITECT.

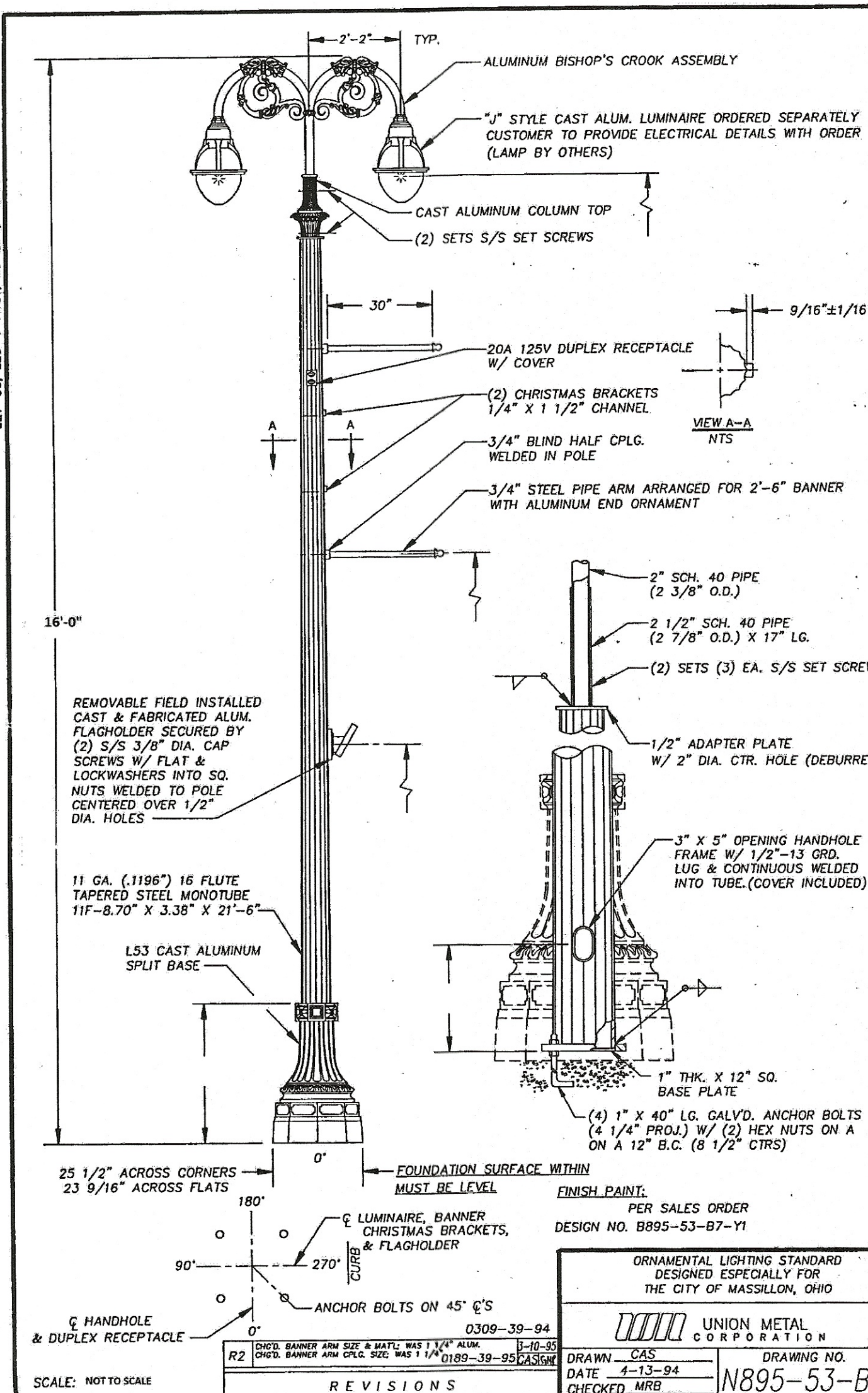
- NOTE:**
1. THE COST FOR WIRING TO ALL STREETSCAPE LUMINARIES AND RECEPTACLES SHALL BE INCIDENTAL TO THE STREETSCAPE BID ITEMS. ALL WIRING IN POLES AND CONDUITS TO LIGHTS AND RECEPTACLES SHALL BE THE RESPONSIBILITY OF THE CONTRACTOR.
 2. ALL WIRING INTO EACH STREETSCAPE POLE BASE SHALL BE NO. 6 AWG WIRE AND CONNECTED TO IN-LINE FUSE HOLDERS. THE COST FOR THIS WIRE SHALL BE INCLUDED TO THE STREETSCAPE BID ITEMS.
 3. IN-LINE FUSE HOLDERS SHALL BE BUSSMANN (HEB-AW-RYC). INSTALL FUSES IN PHASE LINES AND SOLID LINK IN NEUTRAL (HEB-AW-RYC) FOR GROUND USE SPLIT BOLT CONNECTOR. COPPER GROUND CABLE SHALL BE CADWELL CONNECTED TO THE GROUND ROD. RUN CABLE FREE END THROUGH 3/4\"/>
 - 4. THE POLE RECEPTACLE SHALL BE ALTERNATELY WIRED TO PHASE A AND PHASE B AS SHOWN IN THE POLE WIRING DIAGRAM.
 - 5. FOR LIGHTS, USE 5 AMP FUSES. FOR RECEPTACLES, USE 10 AMP FUSES. AMP RATINGS SHALL BE BASED UPON 75 DEGREE C RATINGS.
 - 6. UNLESS OTHERWISE NOTED IN THESE PLANS, ALL WIRING SHALL BE MINIMUM NO. 12 AWG. COPPER, 600 VOLT RATED WITH THE EXCEPTION OF NO. 14 AWG. COPPER SHALL BE PERMISSIBLE FOR CONTROL CIRCUITRY. THE FOLLOWING SHALL APPLY TO ALL WIRING:
 - A. ALL WIRING SHALL BE STRANDED "TH-N/THWN".
 - B. UNDERGROUND BRANCH CIRCUIT WIRING SHALL BE "XHHW".

1. ALL FOUNDATIONS SHALL BE DRILLED PIERS TO AVOID DISTURBING SURROUNDING SOIL. A TEMPORARY STEEL CASING MAY BE REQUIRED IF UTILITIES OR ANOTHER CONFLICT IS IN CLOSE PROXIMITY TO THE FOUNDATION. THEN THOSE FOUNDATIONS MAY HAVE TO BE EXCAVATED BY HAND.
 2. ANCHOR BOLT PATTERN SHALL BE PROVIDED BY POLE MANUFACTURER (U.M.C.).
 3. REINFORCING STEEL SHALL BE ASSEMBLED IN CAGES USING #4 TIES.
 4. FOUNDATION TOP SHALL BE ROUND AND LEVEL FOR DECORATIVE HOUSING.
- * MINIMUM DEPTH MAY VARY BASED ON SOIL CONDITION.
- ** ONLY APPLICABLE IN SIDEWALK AREAS.
- A. TUBE TO BE PLACED W/ TOP AT LEAST 1\"/>
 - B. FOUNDATION TO BE POURED TO 8\"/>
 - C. ONCE SIDEWALK IS PROVIDED AND/OR FINAL FINISHED GRADE ESTABLISHED, TUBE SHALL BE CUT TO PROPER ELEVATION AND FOUNDATION CAP POURED AND LEVELED WITHIN THE TUBE.

PANEL "CP3"

120/240V, 1Ø, 3W, 100A MCB, 10kAIC, FULL CAPACITY NEUTRAL SEPARATE GROUND BUS, INTEGRAL TO MILBANK PEDESTAL

NO.	CIRCUIT DESCRIPTION	WATTS	C/B	A	B	C/B	WATTS	CIRCUIT DESCRIPTION	NO.
1	MAIN BREAKER		100/2			20/1		PEDESTAL CONTROLS	2
3						20/1		PEDESTAL CONTROLS	4
5	1st STREET (NORTH CIRCUIT)	1420	60/2			20/1		PEDESTAL CONTROLS	6
7						60/2	404	NORTH AVE (EAST CIRCUIT)	8
9	SPACE		60/2						10
11						60/2	202	NORTH AVE (WEST CIRCUIT)	12
13	SPACE								14
15	SPACE								16
SUBTOTAL		1420					606	SPACE	
TOTAL LOAD - 2.0kW (8.4A)									



**STATE OF OHIO
REGISTERED PROFESSIONAL ENGINEER**

RONALD D. BECKER
E-62783

NAME: RONALD D. BECKER
LICENSE NO. E-62783
EXPIRATION DATE: 12/31/2017

Project Number 15042
Date 05-20-16

ALL REVISIONS MADE TO THIS
DRAWING AFTER ABOVE DATE SHALL
BE INITIALED AND RECORDED HEREIN.
THIS DRAWING WAS LAST REVISED
ON 05/20/16

ES1.3