



Always a Better Plan

100 Camelot Drive
Fond du Lac, WI 54935
920-926-9800
excelengineer.com

PROJECT INFORMATION

PROPOSED SHELL BUILDING FOR:
AKG DEVELOPMENT
LINCOLN WAY E & 25TH ST SE • MASSILLON, OH 44646

PROFESSIONAL SEAL

PRELIMINARY DATES

JAN. 20, 2023

JOB NUMBER

2178020

SHEET NUMBER

A2.0

2022 © EXCEL ENGINEERING, INC.

EXTERIOR SIGNAGE

- ALL EXTERIOR SIGNAGE IS BY TENANT AT TIME OF TENANT BUILD-OUT AS SEPARATE SUBMITTAL.
- PROVIDE 1/2" TREATED PLYWOOD SUBSTRATE OVER EXTERIOR WALL SHEATHING FOR SIGNAGE ATTACHMENT. (ADJUST THICKNESS OF RIGID INSULATION TO KEEP FINISH FACE OF EIFS FLUSH)
- COORDINATE SIGNAGE LOCATION w/ SIGNAGE SUPPLIER.

CONTROL JOINTS

- 'C/J' INDICATES THE LOCATION OF A MASONRY CONTROL / EXPANSION JOINT
- ALL MASONRY CONTROL JOINTS SHOWN AT CORNER CONDITIONS TO BE AT INSIDE CORNER

FOUNDATIONS

HAND RUB ALL EXPOSED CONCRETE FOUNDATIONS PER SPEC 03 30 00 F (SHEET A0.1) AND STAIN TO MATCH STONE

TYPICAL BACK OF PARAPET

SEAL ALL JOINTS PER MFR REQUIREMENTS TO MAINTAIN WARRANTY

AT HIGH PARAPETS:

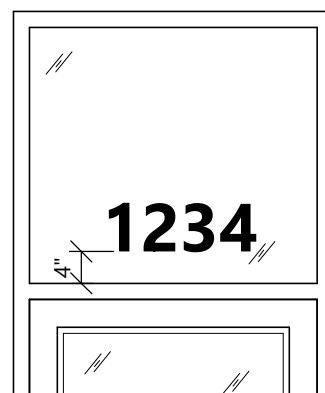
- RUN ROOF MEMBRANE UP TO LEVEL OF LOW PARAPET
- FLASH w/ SS TERMINATION BAR
- RUN PVC MEMBRANE (COLOR TO MATCH EIFS) UP AND OVER PARAPET (SEE DETAILS)

AT LOW PARAPETS:

- ROOF MEMBRANE TO RUN CONTINUOUS OVER TOP OF PARAPET (SEE DETAILS)

EXTERIOR FINISH KEY

- | | |
|---|---|
| 7 | PAINTED ELEMENT
COLOR: PAINTED SW 7069 IRON ORE |
| 6 | THERMALLY BROKEN ALUMINUM FRAME w/
INSULATED GLAZING
COLOR: MATCH RAL#7021 MT0028 FLAT BLACK
• SEE A6 SHEET(s) |
| 5 | METAL SEAM AWNING w/ ALUMINUM FRAME RAL
MFR: LOCALLY SOURCED
STYLE: POWDERCOAT
COLOR: TO MATCH RAL#7021 MT0028 FLAT BLACK |
| 4 | EIFS
MFR: DRYVIT
STYLE: TEXTURE W/ STRATOTONE COLORANT
TEXTURE: SANDBLAST TEXTURE
COLOR: TO MATCH SW 7030 ANEW GRAY |
| 3 | MODULAR BRICK VENEER
MFR: MUTUAL MATERIALS
COLOR: PEWTER MISSION
MORTAR: SM100 GRAY |
| 2 | PRECAST CONCRETE SILL
MFR: STONECAST
COLOR: LIMESTONE
MORTAR: WESTERN LIME CORP W-5 |
| 1 | VERTICAL WOOD SIDING PANEL
MFR: IDENTITY WOOD PRODUCTS
COLOR: PRETZEL MEDIUM BROWN
STYLE: SEALED FACE AND BACK 5/8" X 7-1/4".
ALUMINUM TRIM POWDER COATED TO MATCH CLADDING |

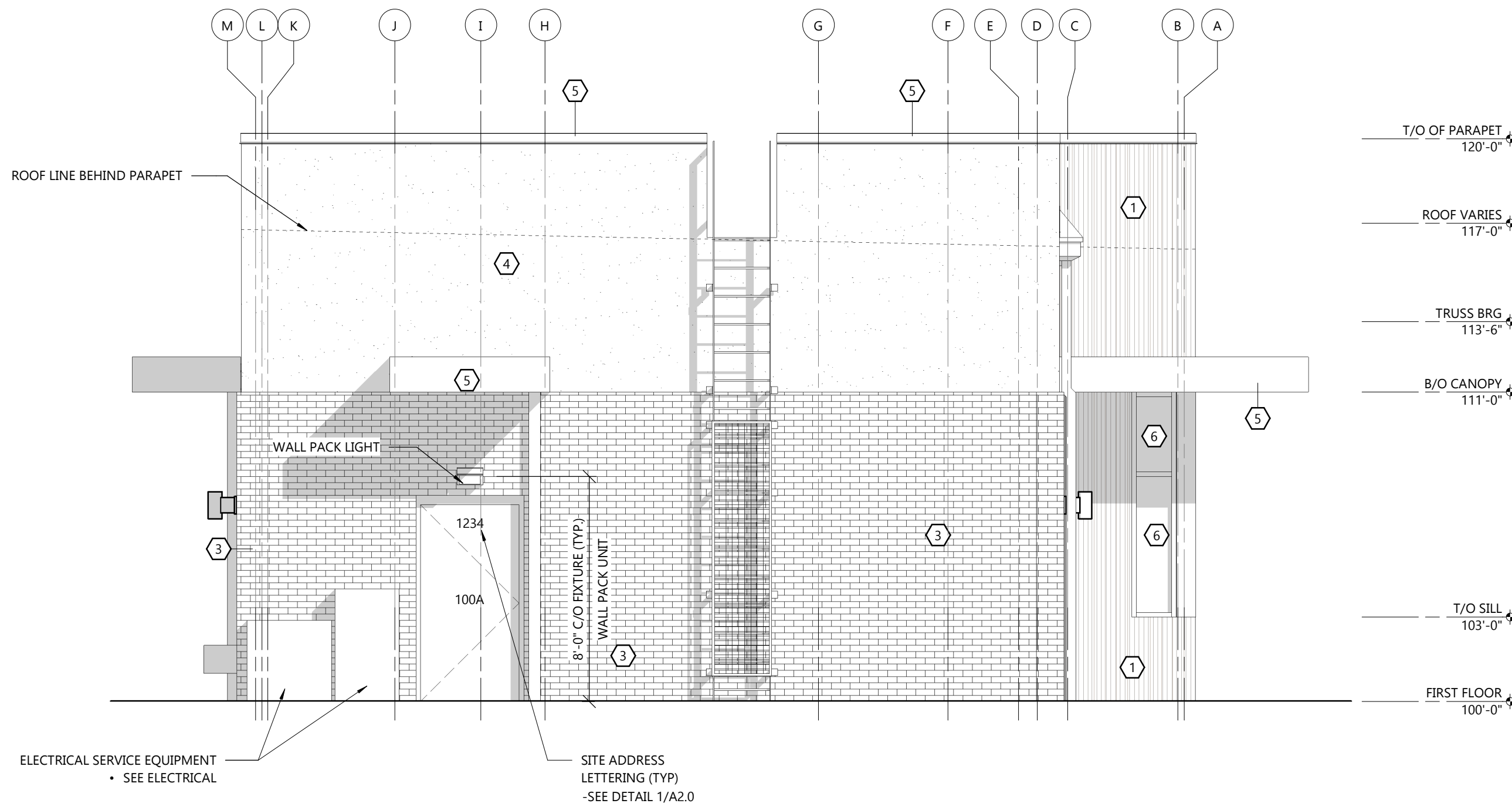


VINYL ADDRESS LETTERING
COLOR, SIZE AND TEXT
STYLE TO MEET ALL STATE
AND LOCAL CODES

1
A2.0

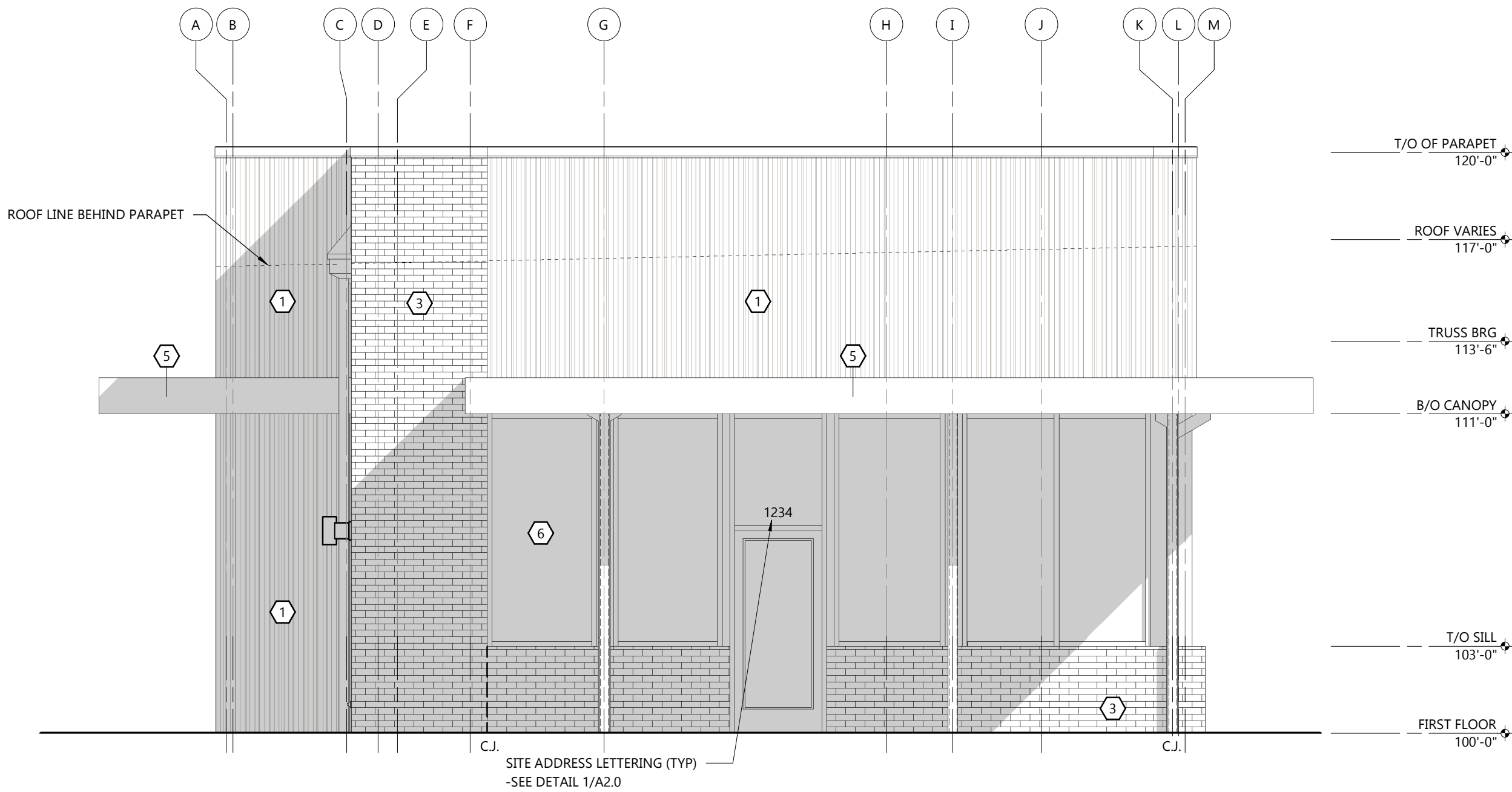
ADDRESS DETAIL

NOT TO SCALE



SOUTH ELEVATION

SCALE: 1/4" = 1'-0"

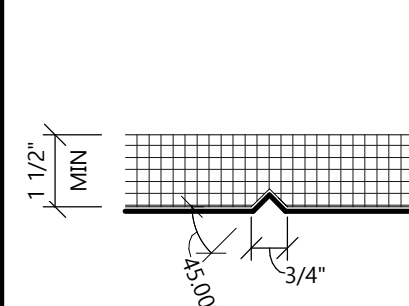


NORTH ELEVATION

SCALE: 1/4" = 1'-0"

- EIFS EXPANSION JOINTS REQUIRED AT THE FOLLOWING LOCATIONS:
- WHERE THEY EXIST IN THE SUBSTRATE OR SUPPORT CONSTRUCTION
 - WHERE THE EIFS ADJOINS DISSIMILAR CONSTRUCTION OR MATERIALS
 - AT CHANGES IN BUILDING HEIGHT OR OTHER AREAS OF ANTICIPATED BUILDING MOVEMENT
 - AT FLOOR LINES IN MULTI-LEVEL WOOD FRAME CONSTRUCTION
 - WHERE PREFABRICATED PANELS ABUT ONE ANOTHER
 - WHERE THE SUBSTRATE CHANGES
 - IN CONTINUOUS ELEVATIONS AT INTERVALS NOT EXCEEDING 75'-0"
 - WHERE REQUIRED PER MFR RECOMMENDATIONS

VERIFY FINAL LOCATIONS w/ A/E PRIOR TO INSTALL

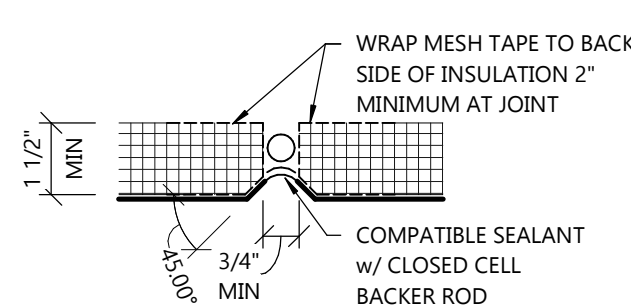


SCORED REVEAL JOINT

1 1/2" INSULATION THICKNESS OR GREATER

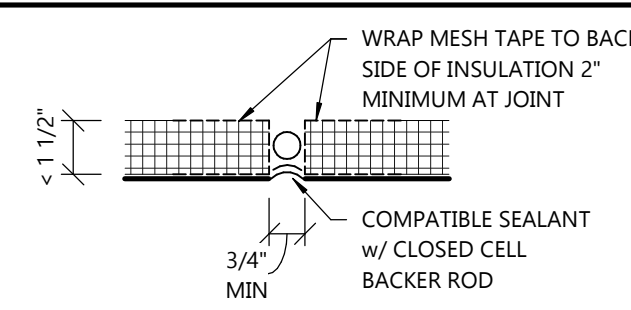
SCORED REVEAL IS USED FOR VISUAL APPEARANCE ONLY AND DOES NOT ACT AS AN EXPANSION JOINT

FOR REVEALS IN MATERIAL LESS THAN 1 1/2" THICK, EXPANSION JOINTS OR MFR APPROVED REVEAL TRIM MUST BE USED



SCORED REVEAL w/ EXPANSION JOINT

1 1/2" INSULATION THICKNESS OR GREATER



EXPANSION JOINT

LESS THAN 1 1/2" INSULATION THICKNESS

2
A2.0

EIFS JOINT DETAILS

SCALE: 3" = 1'-0"

ARCHITECTURAL EXTERIOR ELEVATIONS