

EASTSIDE PK-3 ELEMENTARY SCHOOL

1 PAUL E BROWN DR SE,

MASSILLON, OH 44646

EARLY SITE PACKAGE

MARCH 31, 2023

MASSILLON CITY SCHOOLS DISTRICT

OWNER
930 17TH STREET N.E.

MASSILLON, OHIO 44646

TEL: 330-830-3900



MIKE DEWINE,
CHERYL LYMAN,
MARK BARR,
HELENA GONZALEZ,

GOVERNOR STATE OF OHIO
EXECUTIVE DIRECTOR
PROJECT MANAGER
PROJECT MANAGER



LIZ HERSHER,
PAUL J. SALVINO,
SANDRA MOEGLIN,
MARK FORTNER,

BOARD PRESIDENT
DISTRICT SUPERINTENDENT
ASSISTANT SUPERINTENDENT
DIRECTOR OF BUSINESS SERVICES



CONSTRUCTION MANAGER AT-RISK

C.T. TAYLOR CONSTRUCTION

5802 AKRON CLEVELAND RD

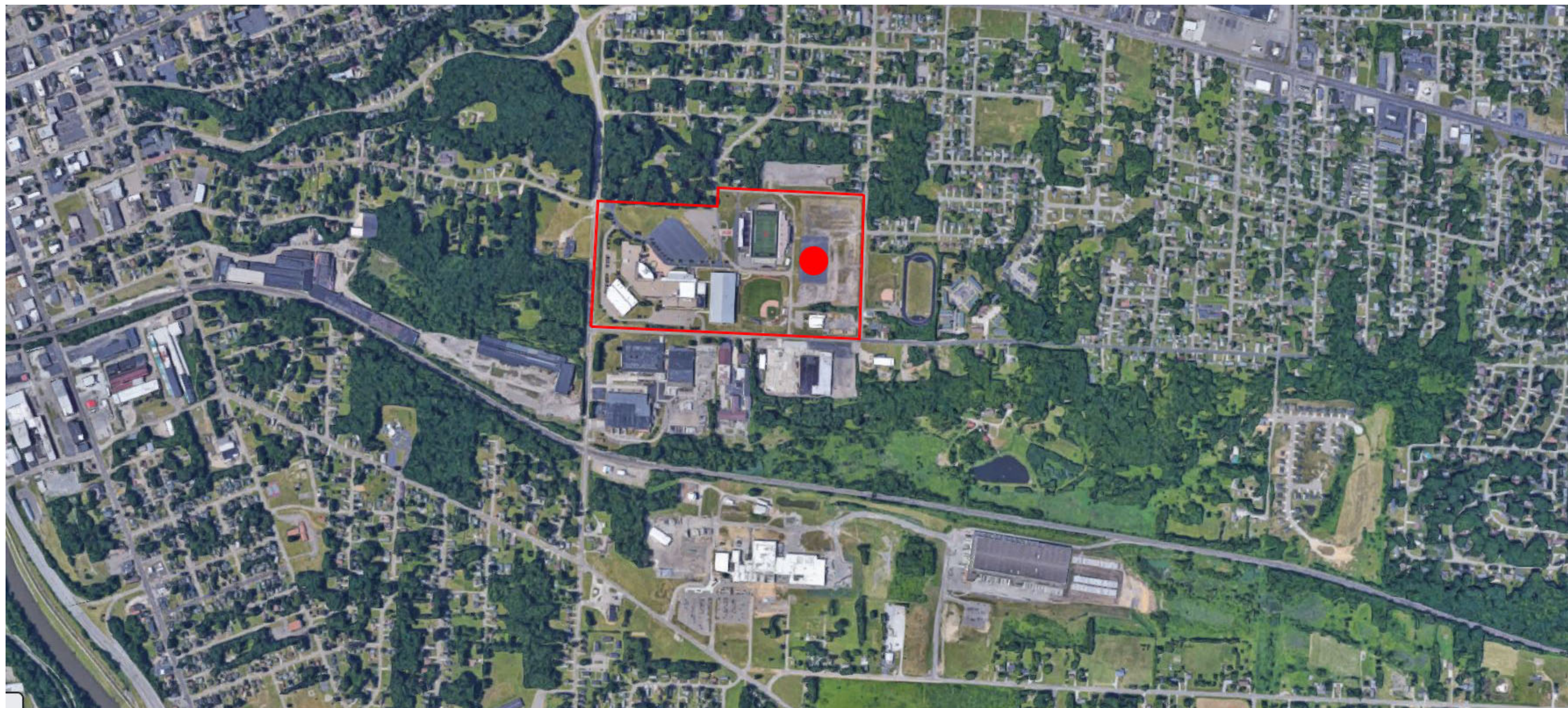
HUDSON, OH 44236

DRAWING INDEX

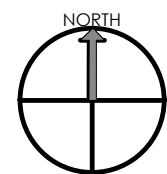
NO.	DESCRIPTION
G-001	COVER SHEET
V-001	TOPOGRAPHIC AND BOUNDARY SURVEY
C-001	ARMORY BUILDING ABATEMENT AND DEMOLITION PLAN
C-100	UTILITY DEMOLITION PLAN
C-400	UTILITY PLAN
C-401	UTILITY NOTES
C-402	UTILITY SCHEDULE
C-500	WATER LINE PROFILES
C-501	WATER LINE & SANITARY SERVICE PROFILES
C-502	STORM SEWER PROFILES
C-503	STORM SEWER PROFILES
C-504	STORM SEWER PROFILES
C-700	TEMPORARY SEDIMENT BASIN PLAN
C-701	STORMWATER MANAGEMENT BASIN PLAN
C-800	STORMWATER POLLUTION PREVENTION PLAN
C-801	STORMWATER POLLUTION PREVENTION PLAN NOTES
C-900	EROSION CONTROL DETAILS
C-901	UTILITY DETAILS

DRAWING INDEX

L-100	SITE PREPARATION
L-200	SITE LAYOUT
L-300	SITE GRADING
L-500	DETAILS
L-503	DETAILS
L-504	DETAILS



AERIAL MAP



ARCHITECTURAL VISION GROUP, LTD.

23850 SPERRY DRIVE, CLEVELAND OHIO 44145

TEL: 440-808-8520 FAX: 440-808-8301
www.avgl.com

LEWIS LAND PROFESSIONALS, INC.

CONSULTING CIVIL ENGINEER
8691 WADSWORTH ROAD, SUITE 100, WADSWORTH, OHIO 44281

BEHNKE & ASSOCIATES

CONSULTING LANDSCAPE ARCHITECT
2658 SCRANTON ROAD SUITE 2, CLEVELAND, OHIO 44113

VEROSTKO CONSULTING ENGINEERS

CONSULTING ENGINEER:
MECHANICAL, ELECTRICAL, PLUMBING, FIRE PROTECTION
2781 SALT SPRINGS ROAD, YOUNGSTOWN, OHIO 44509

OSBORN ENGINEERING

CONSULTING ENGINEER: STRUCTURAL/TECHNOLOGY
1100 SUPERIOR AVENUE, CLEVELAND, OHIO 44114

PSI ENGINEERING

CONSULTING ENGINEER: ENVIRONMENTAL PHASE 1, GEOTECHNICAL CONSULTANT
5555 CANAL ROAD CLEVELAND, OHIO 44125

BRECKENRIDGE

KITCHEN EQUIPMENT& DESIGN
2401 SAWMILL PARKWAY, SUIT 7, HURON, OH 44839

NEO SUSTAINABILITY

LEED CONSULTANT
2945 EUCLID HEIGHTS BLOULEVARD, CLEVELAND HEIGHTS, OHIO 44118



PROJECT NO
2203-2

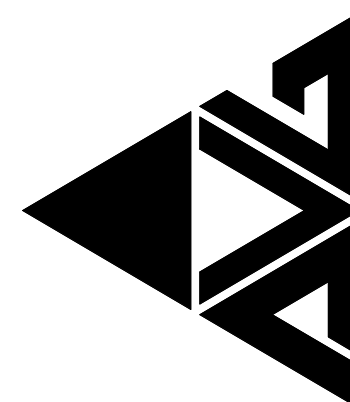
ARCHITECTURAL VISION GROUP, LTD

PLANNERS

ARCHITECTS

CLEVELAND, OHIO 44145

23850 SPERRY DRIVE



PROFESSIONAL SEAL

CONSULTANT

MASSILLON CITY SCHOOLS
EASTSIDE PK-3 ELEMENTARY
SCHOOL
1 PAUL E BROWN DRIVE SE, MASSILLON, OHIO 44646
MASSILLON CITY SCHOOL DISTRICT MASSILLON, OHIO

NO.	DATE	DESCRIPTION
1	3/31/23	EARLY SITE PACKAGE
2		ISSUED AS

PROJECT NO	2203-2
DRAWN BY	Author
CHECKED BY	Checker
DATE	

COVER SHEET

SCALE:

SHEET NO

G -001