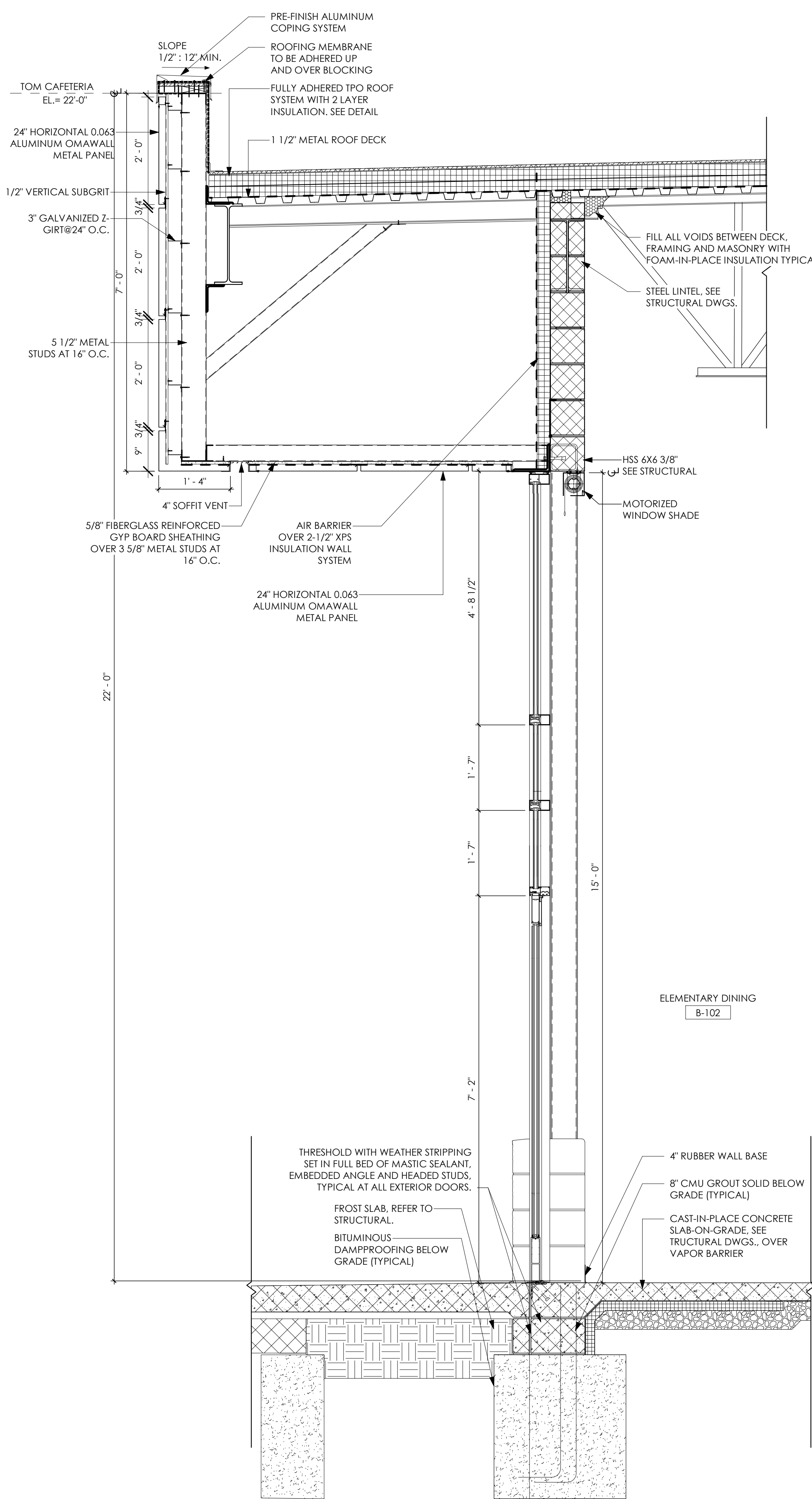


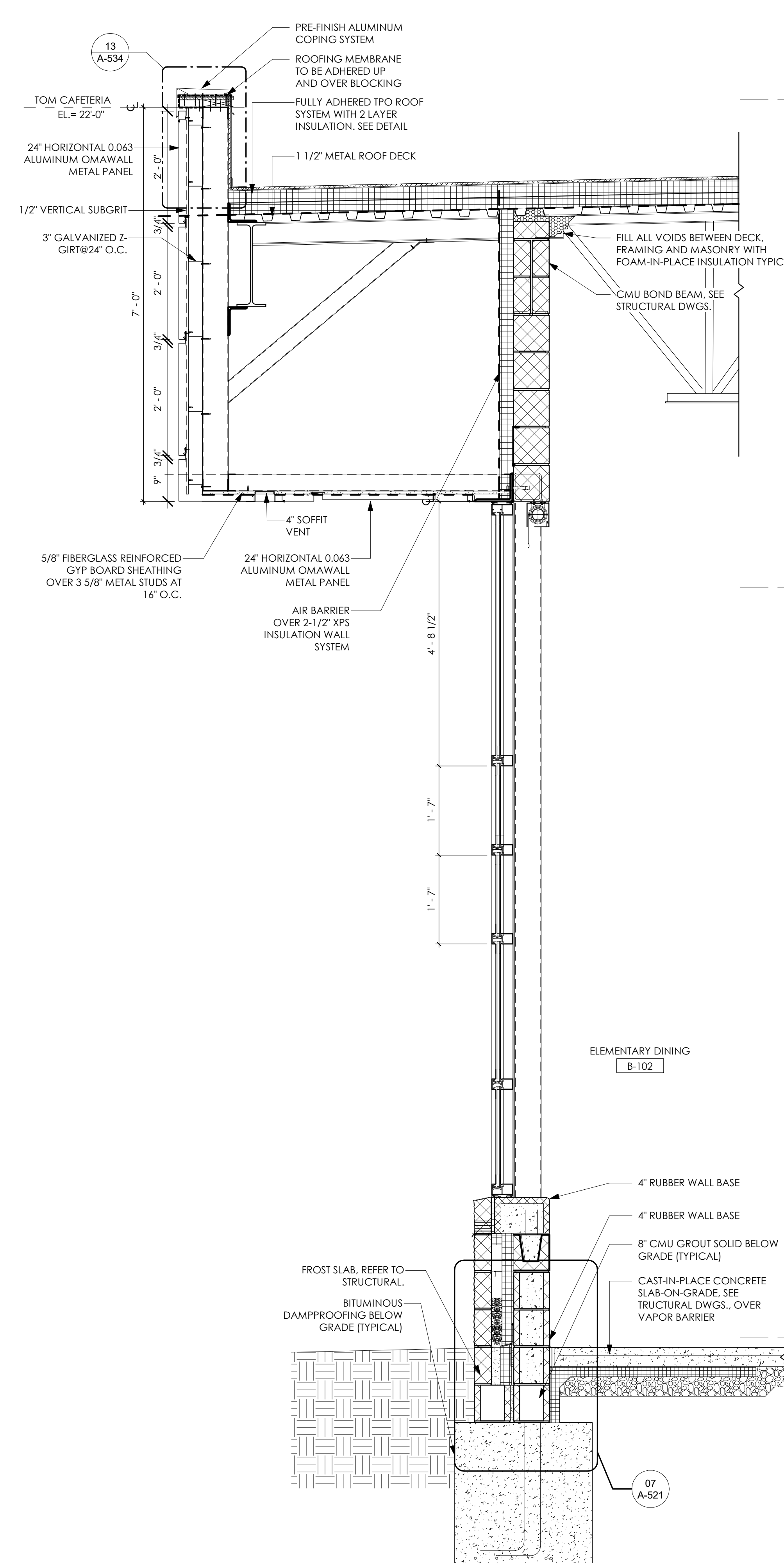
- TYPICAL PLAN NOTES
1. ALL PENETRATIONS THROUGH WALL CAVITY INSULATION WALL SYSTEM TO BE SEALED PER MANUFACTURER'S RECOMMENDED DETAILS FOR PENETRATIONS IN THE SYSTEM.
 2. SEE ROOFING DETAILS ON SHEET A-351 THRU A-353.
 3. SEE TYPICAL METAL PANEL DETAILS ON SHEET A-534 AND A-535.
 4. SEE MASONRY DETAILS ON SHEET A-521.
 5. ALL UNITS REQUIRE AND DAM FLASHING. SEE DETAIL ON SHEET A-521 AND A-522. SEE (B) A-535 FOR END DAMS DETAIL FOR METAL PANEL SYSTEM.
 6. REFER TO SHEETS A-401 THRU A-404 FOR ALUMINUM FRAME OPENING ENLARGED DETAILS.
 7. ALL EXPOSED STRUCTURAL STEEL (I.E. COLUMNS, BEAMS, ANGLES, ETC.) TO BE ARCHITECTURAL GRADE FINISH STEEL.

*REFER TO SHEET A-205 & A-204 FOR METAL PANEL PROFILE LEGEND AND METAL PANEL COLORS.

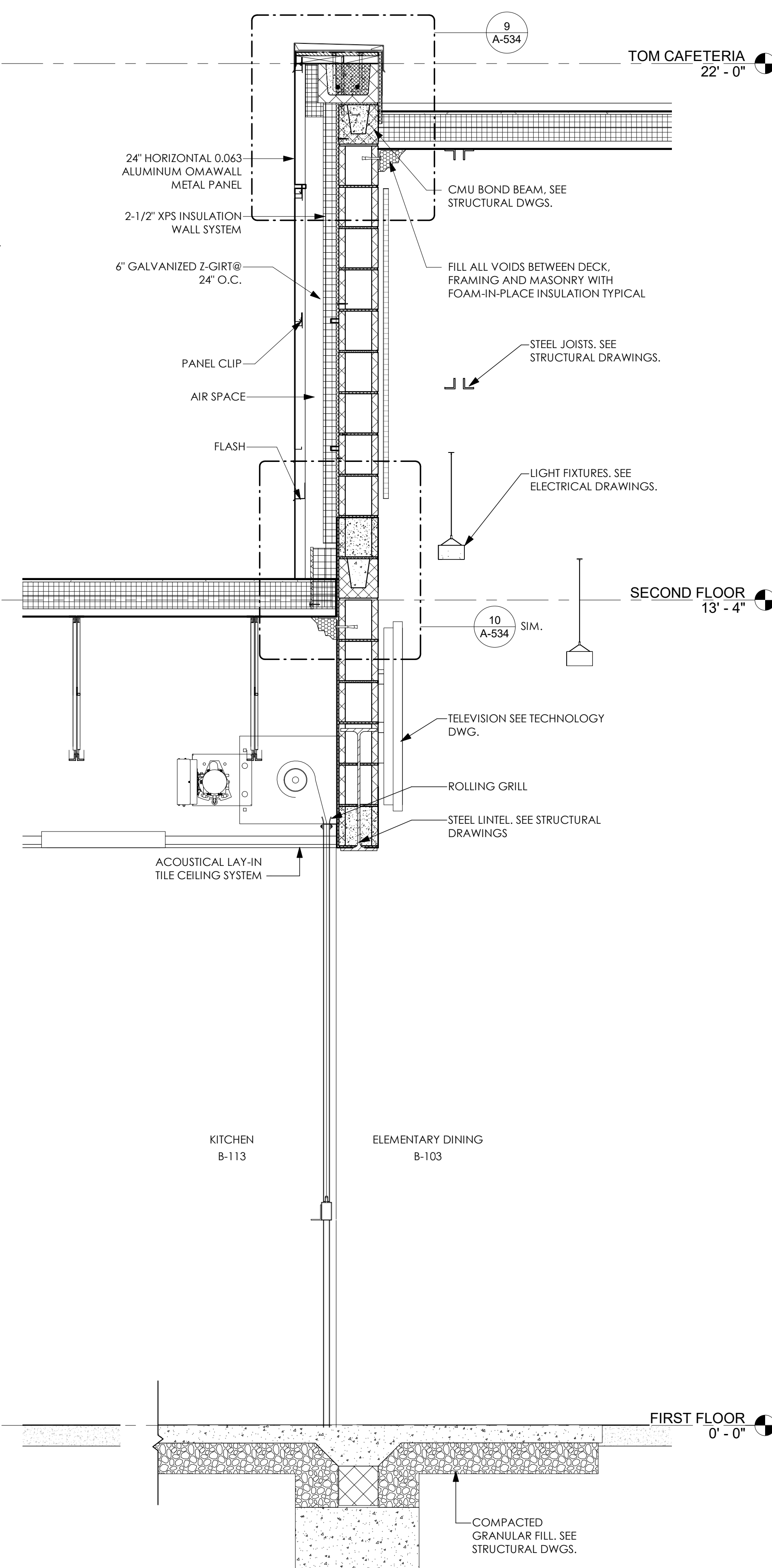


NOTE:
BRICK / SPLIT-FACE CMU AND METAL PANEL COLOR MAY VARY. SEE EXTERIOR ELEVATIONS A-202 THRU A-204 FOR ADDITIONAL INFORMATION.

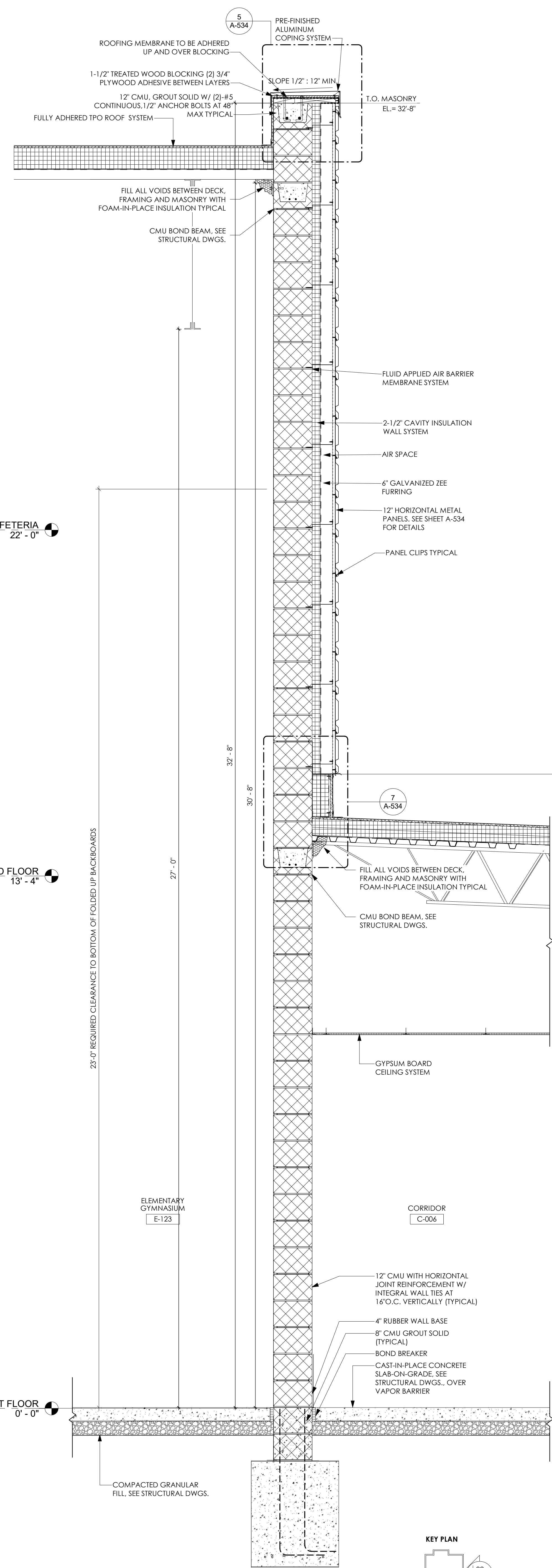
09 WALL SECTION
3/4" = 1'-0"



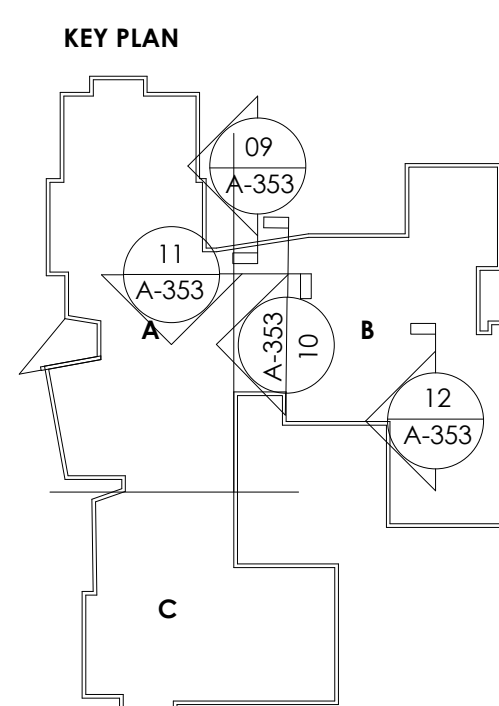
10 WALL SECTION
3/4" = 1'-0"



11 ROLLING GRILL SECTION
3/4" = 1'-0"

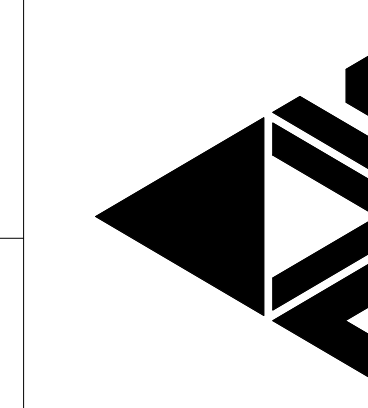


12 WALL SECTION
3/4" = 1'-0"



PROJECT NO
2203-2

ARCHITECTURAL VISION GROUP, LTD
PLANNERS
ARCHITECTS
23850 SPERRY DRIVE
CLEVELAND, OHIO 44145



CONSULTANT

MASSILLON CITY SCHOOLS
MASSILLON EAST ELEMENTARY PK-3
1 PAULE BROWN DRIVE SE, MASSILLON, OHIO 44646
MASSILLON CITY SCHOOL DISTRICT MASSILLON, OHIO

MARK	DATE	DESCRIPTION
100% BID PERMIT SET	7/2/12	
ISSUED AS		

PROJECT NO 2203-2
DRAWN BY
CHECKED BY
DATE

WALL SECTIONS

SCALE: As Indicated
SHEET NO
A-353