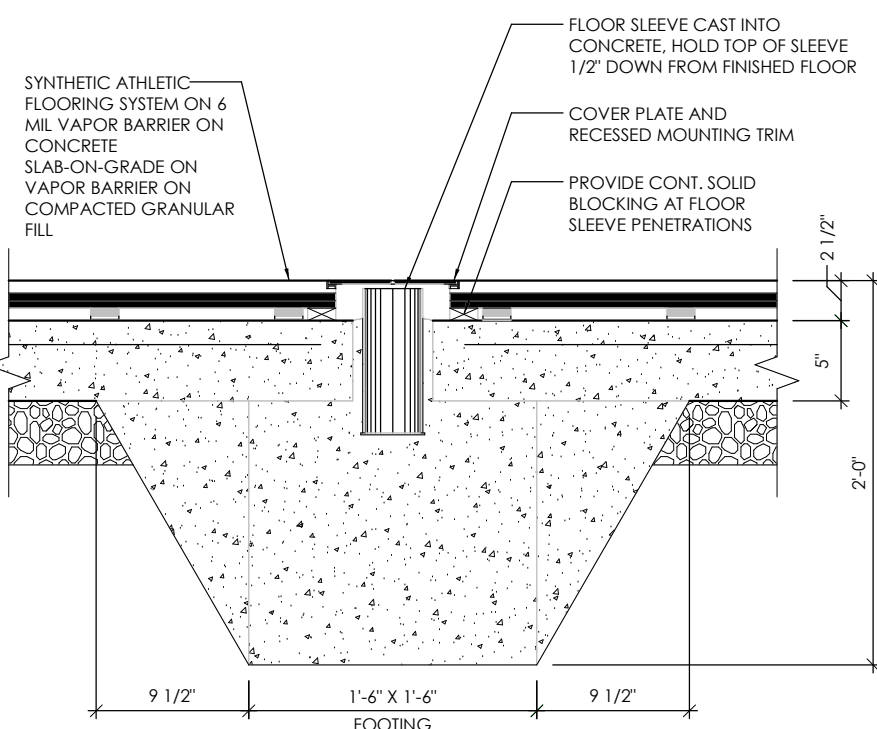


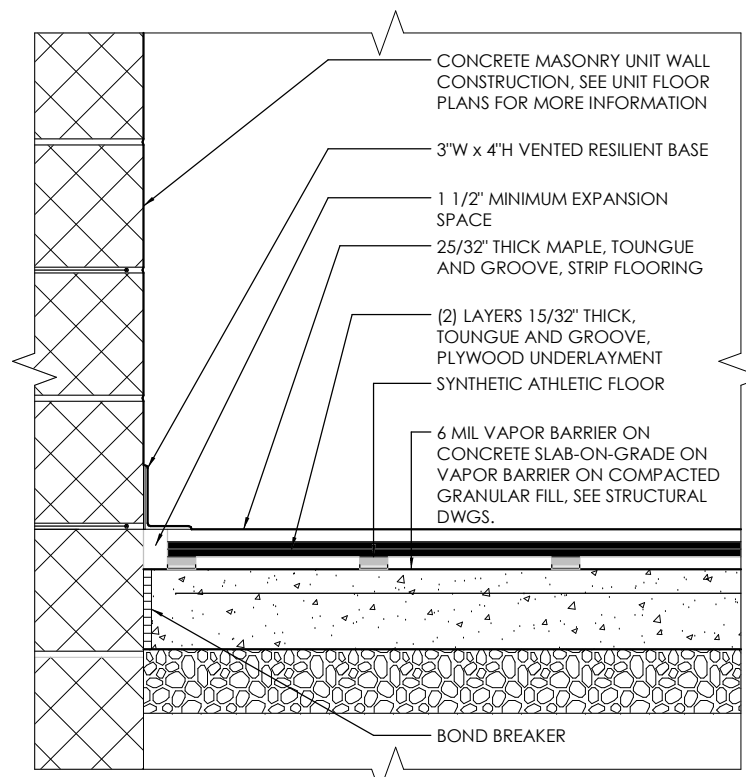
ELEMENTARY COURT MARKING KEYED NOTES	
1	MAIN BASKETBALL BORDER
2	MAIN BASKETBALL COURT MARKING 2" WIDE
3	MAIN BASKETBALL 1/2 COURT LINE 2" WIDE
4	MAIN VOLLEYBALL COURT MARKING 2" WIDE
5	MAIN VOLLEYBALL SERVING AREA 2" WIDE X 6' LONG
6	MAIN VOLLEYBALL ATTACK LINES 2" WIDE
7	MAIN VOLLEYBALL COURT LINE 1" WIDE X 6' LONG
8	COACHING BOX COURT MARKING 2" WIDE X 1'-6" LONG
9	CROSS COURT BASKETBALL COURT MARKINGS TO BE 1" WIDE X 12' LONG WITH 12" SPACE BETWEEN
10	HOP SCOTCH MARKING
11	FOUR-SQUARE COURT MARKING

GENERAL NOTES:  
1. COURT MARKINGS ARE BASE BID.  
2. COLOR OF COURT MARKINGS TO BE REVIEWED AND APPROVED BY ARCHITECT.  
3. ALL OTHER COURT DECISIONS BY ARCHITECT. ALL COLORS TO BE CHOSEN BY ARCHITECT FROM MANUFACTURER'S FULL RANGE OF COLOR.  
4. COURT MARKINGS TO BE PAINTED.  
5. COURT MARKINGS SUBJECT TO CHANGE AT TIME OF SHOP DRAWINGS.

GYMNASIUM EQUIPMENT SCHEDULE	
G1	SAFETY WALL PADDING (12'-0" W x 6'-2" H), COLOR TO BE CHOSEN BY ARCHITECT FROM MANUFACTURER'S FULL RANGE OF COLORS.
G2	SAFETY WALL PADDING (12'-0" W x 6'-2" H), COLOR TO BE CHOSEN BY ARCHITECT FROM MANUFACTURER'S FULL RANGE OF COLORS.
G3	VOLLEYBALL SLEEVES. SEE DETAIL 01/A-506 OR 02/A-506.
G4	CEILING SUSPENDED, FRONT-FOLD, REAR BRACED BASKETBALL BACKSTOPS WITH GLASS BACKBOARD AND GOAL HEIGHT ADJUSTMENT.
G5	WALL-MOUNTED, FRONT-FOLD BASKETBALL BACKSTOPS WITH FIBERGLASS BACKBOARD AND GOAL HEIGHT ADJUSTMENT.
G6	WALL-MOUNTED BASKETBALL BACKSTOPS WITH FIBERGLASS BACKBOARD AND GOAL HEIGHT ADJUSTMENT.
G7	SCOREBOARD. SEE SPECIFICATIONS. COLOR TO BE CHOSEN BY ARCHITECT FROM MANUFACTURER'S FULL RANGE OF COLORS.



GYMNASIUM FLOOR SLEEVE DETAIL  
SYNTHETIC ATHLETIC FLOORING  
SCALE: 1/4" = 1'-0"



BASE DETAIL - SYNTHETIC ATHLETIC FLOORING  
SCALE: 1/4" = 1'-0"

PROJECT NO  
2203-2

ARCHITECTURAL VISION GROUP, LTD  
PLANNERS  
ARCHITECTS  
23850 SPERRY DRIVE  
CLEVELAND, OHIO 44145

PROFESSIONAL SEAL  
SYD S.  
1979  
EXPIRATION DATE 12/31/2023

MASSILLON CITY SCHOOLS  
MASSILLON EAST ELEMENTARY PK-3  
1 PAULE BROWN DRIVE SE, MASSILLON, OHIO 44646  
MASSILLON CITY SCHOOL DISTRICT MASSILLON, OHIO

CONSULTANT

PROJECT NO	2203-2
DRAWN BY	Author
CHECKED BY	Checker
DATE	

MARK	7/1/23	100% BID PERMIT SET
ISSUED AS	DATE	DESCRIPTION

ENLARGED GYMNASIUM PLAN AND DETAILS

SCALE: As indicated

SHEET NO  
A-506