

CONSULTANT:

MASSILLON CITY SCHOOLS

MASSILLON EAST ELEMENTARY PK-3

1 PAULE BROWN DRIVE SE, MASSILLON, OHIO 44646

MASSILLON CITY SCHOOL DISTRICT MASSILLON, OHIO

MARK	DATE	DESCRIPTION
100% BID PERMIT SET	7/2/23	ISSUED AS:

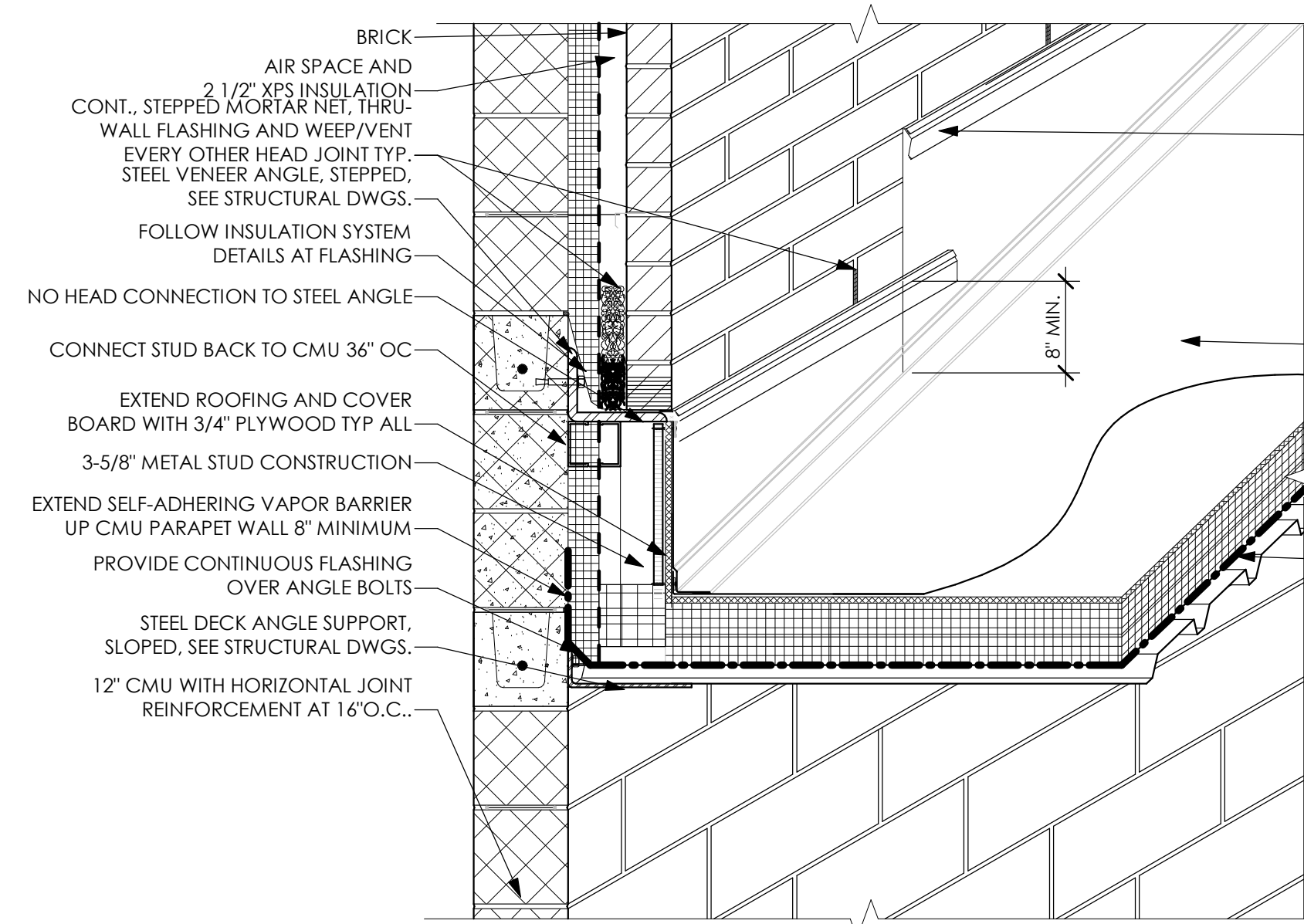
PROJECT NO	2203-2
DRAWN BY	Author
CHECKED BY	Checker
DATE	

ROOF DETAILS

SCALE: As Indicated

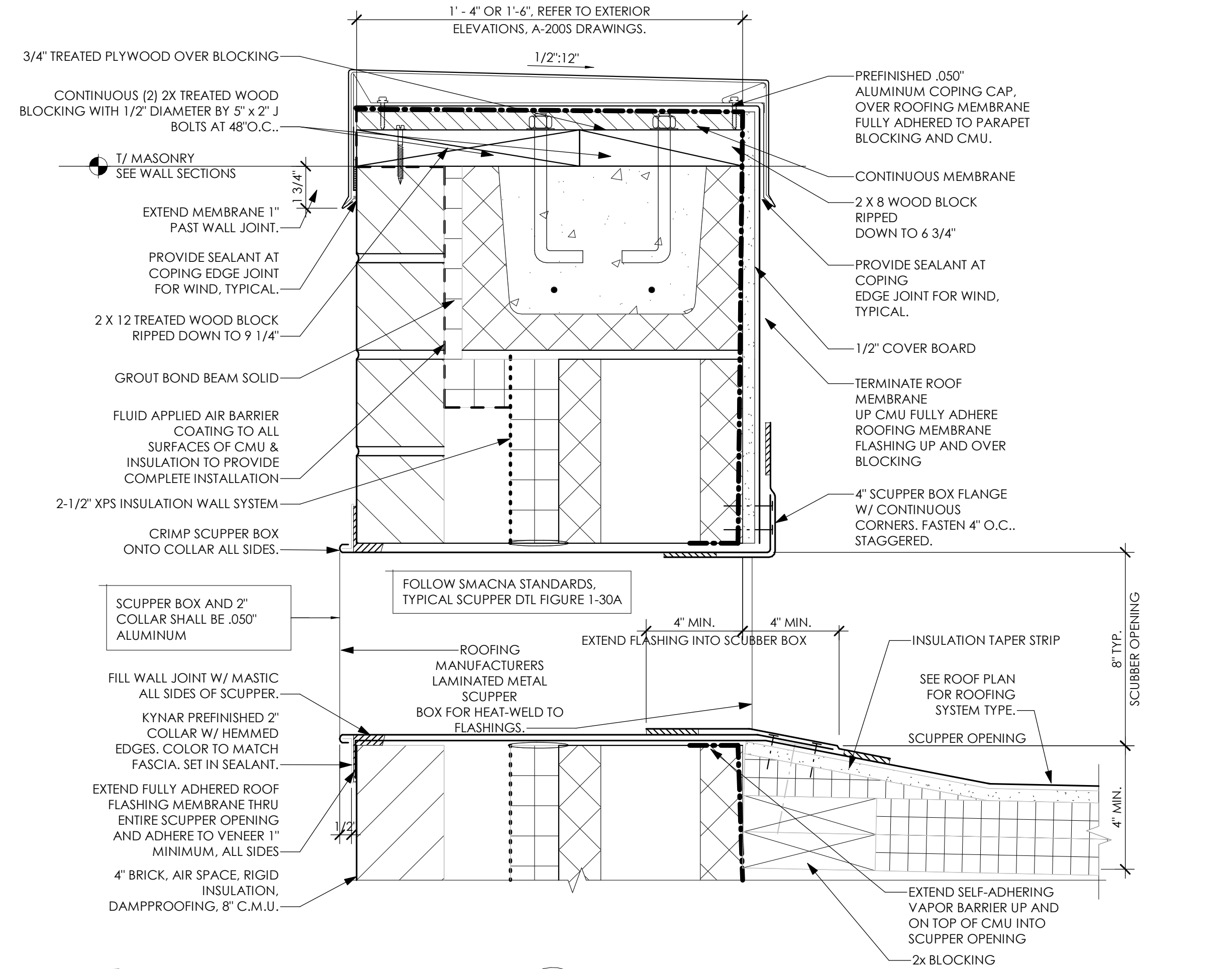
SHEET NO

A-533



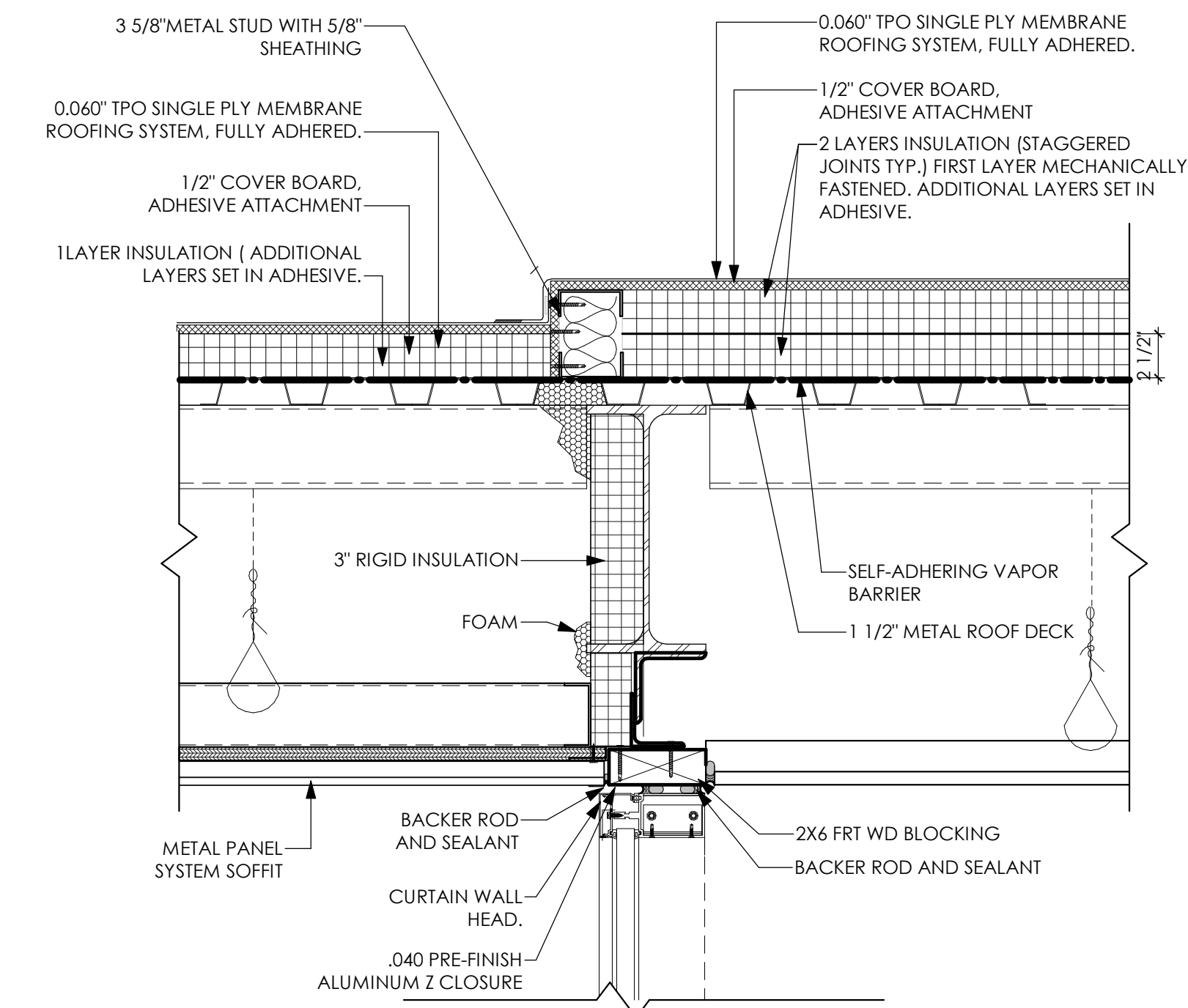
03 STEP FLASHING DETAIL

SCALE: 1/2" = 1'-0"



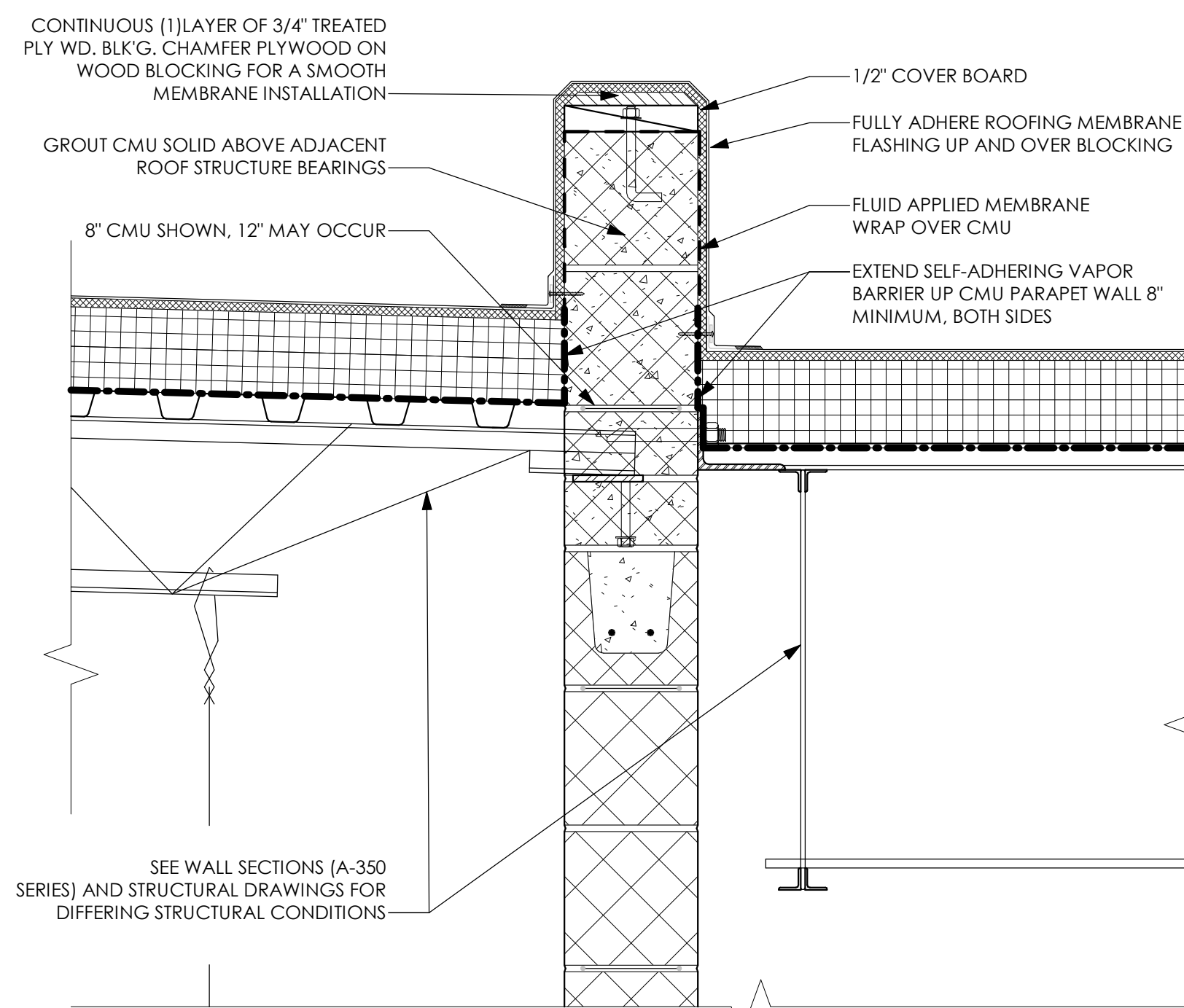
04 TYPICAL PARAPET W/ THRU-WALL SCUPPER

SCALE: 3/4" = 1'-0"



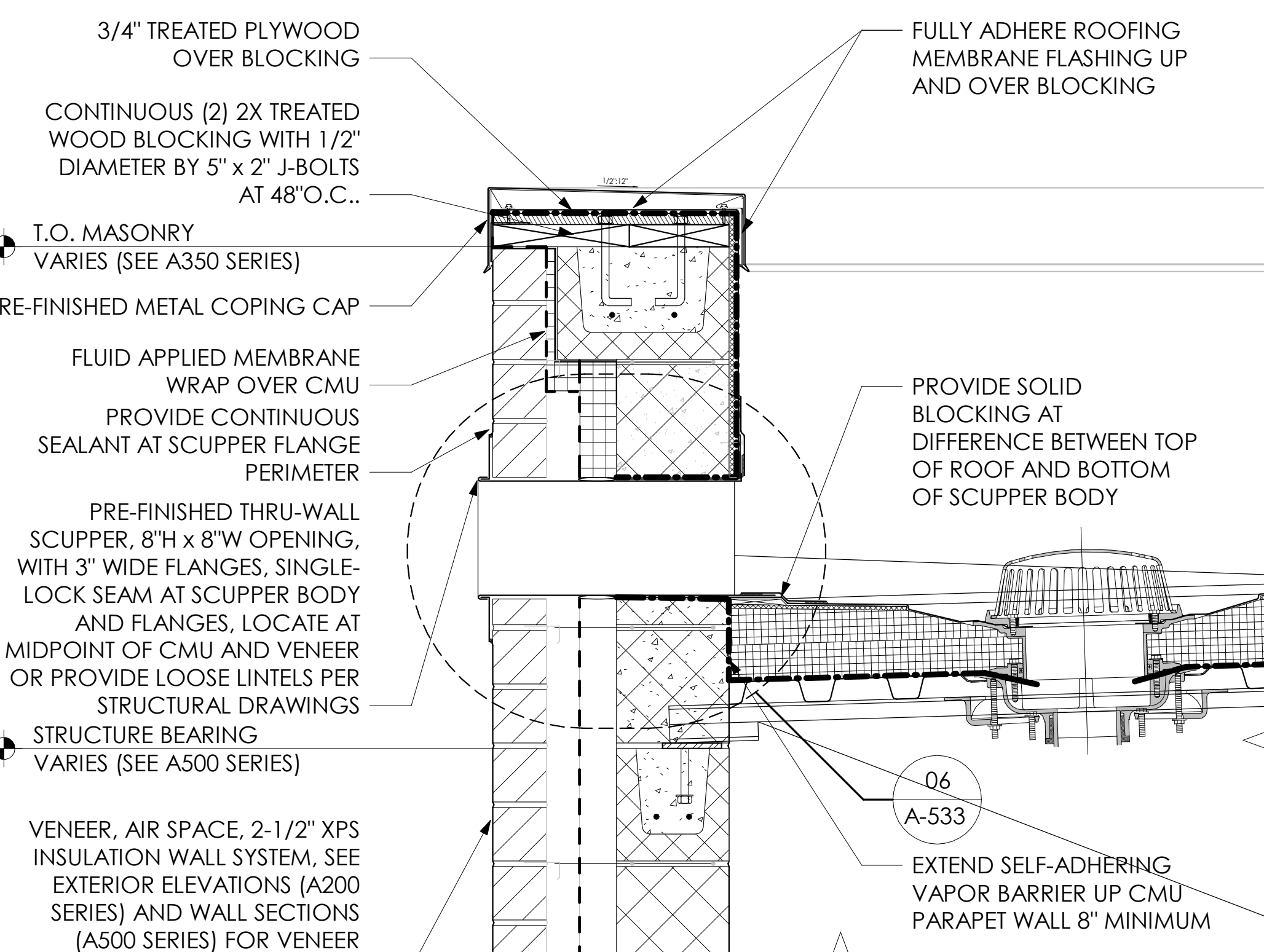
02 WRAPPED PARAPET DETAIL

SCALE: 1/2" = 1'-0"



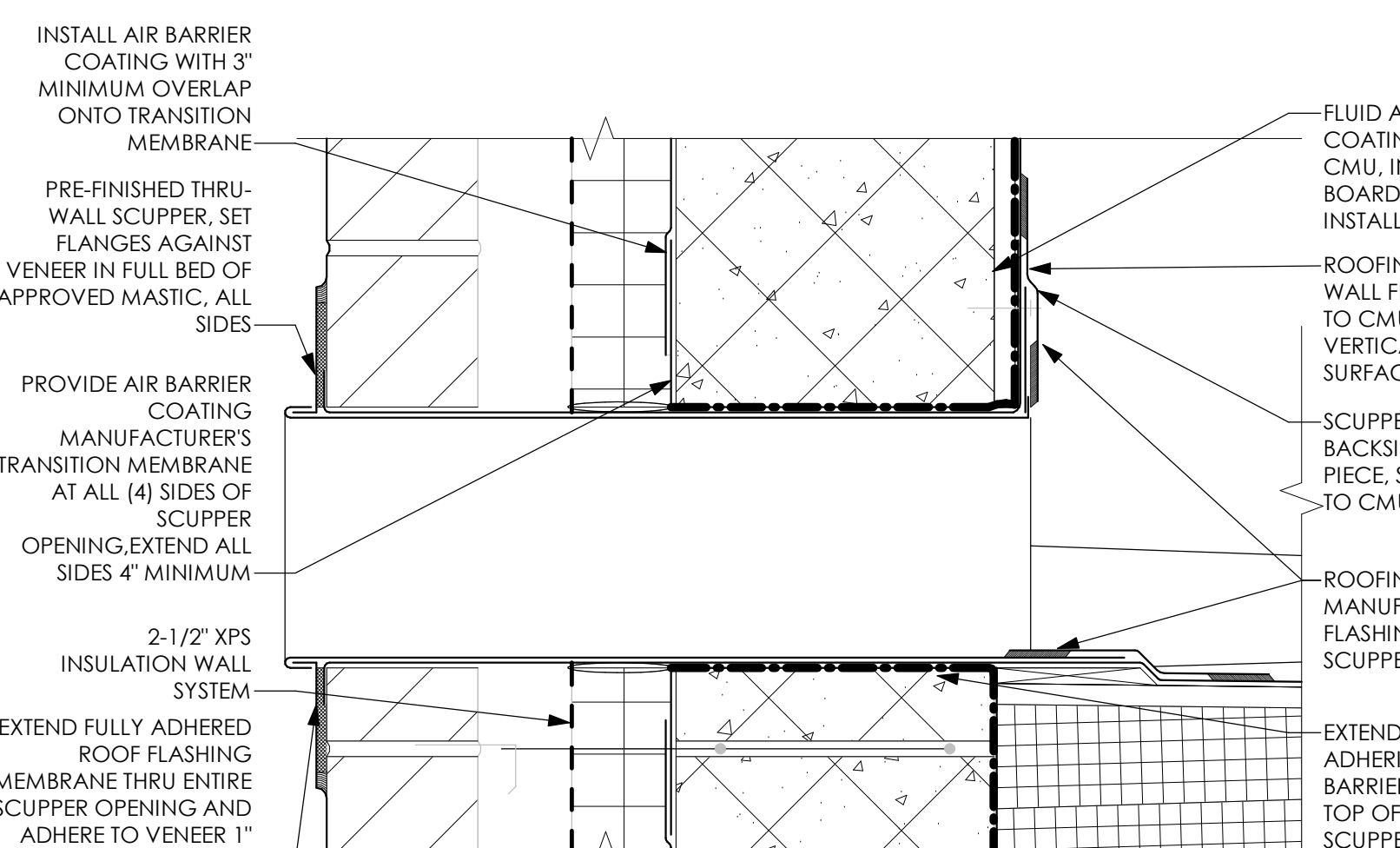
02 WRAPPED PARAPET DETAIL

SCALE: 1/2" = 1'-0"



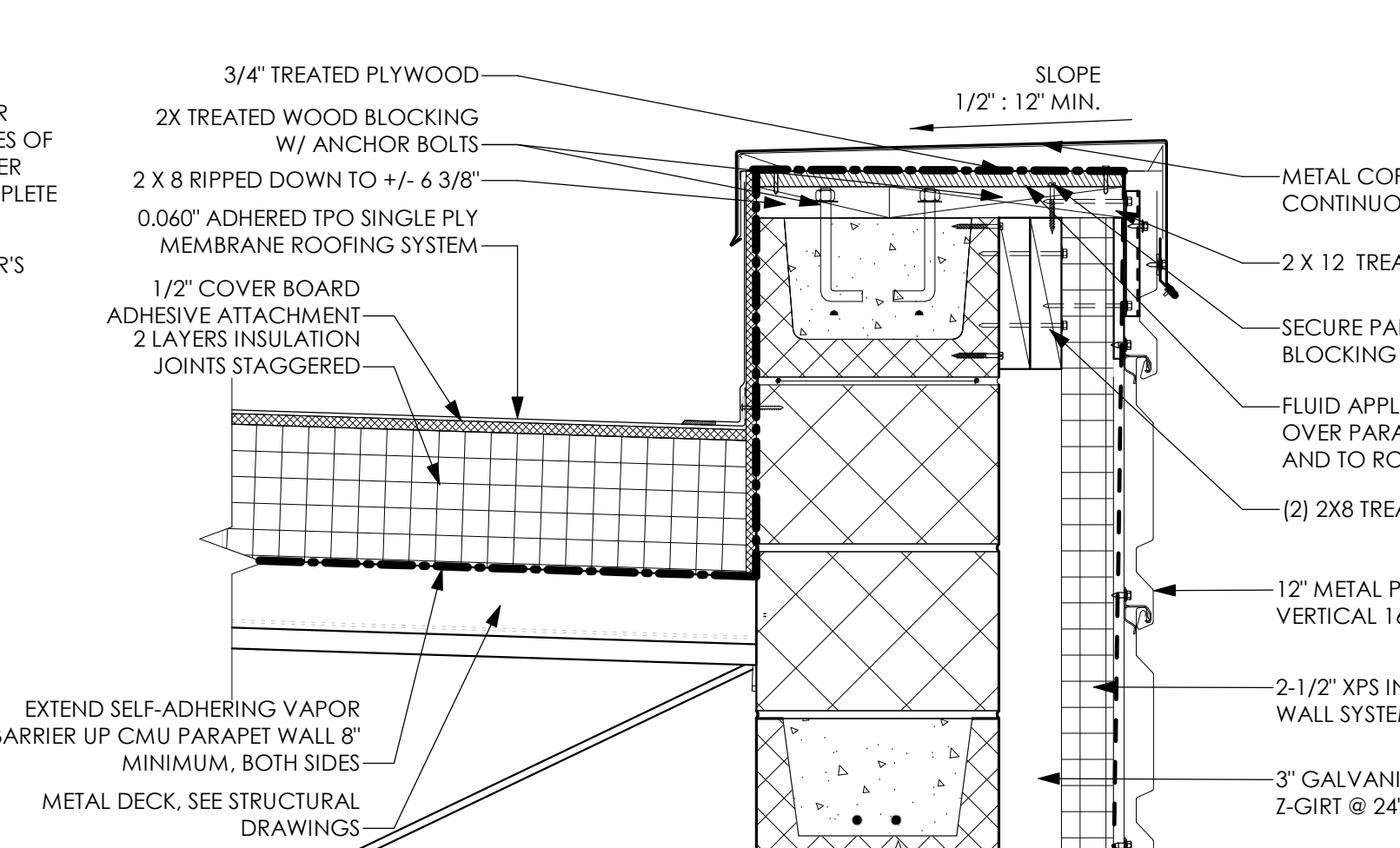
05 TYPICAL THRU-WALL SCUPPER

SCALE: 1/2" = 1'-0"



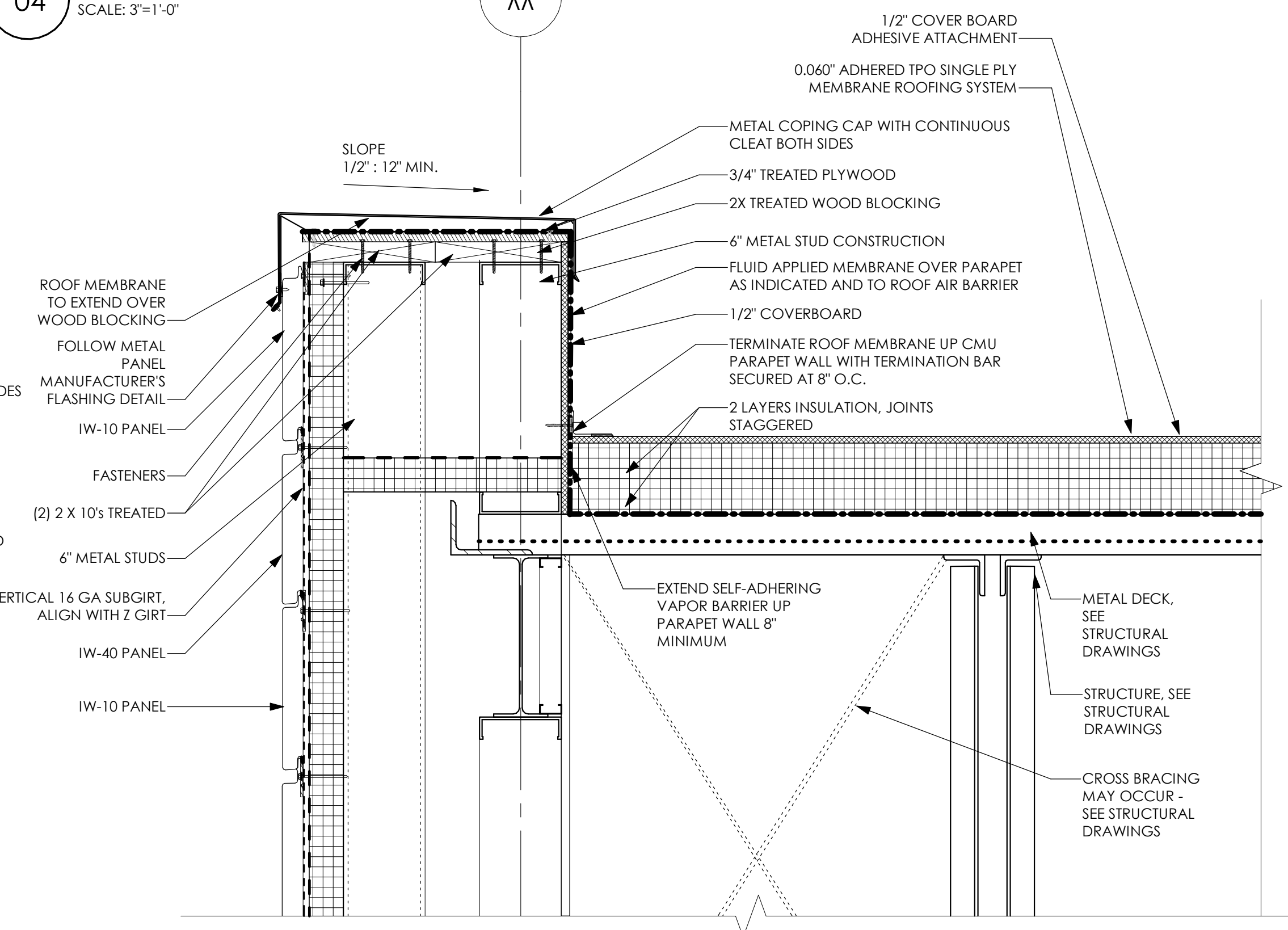
06 AIR BARRIER AT SCUPPER

SCALE: 3/4" = 1'-0"



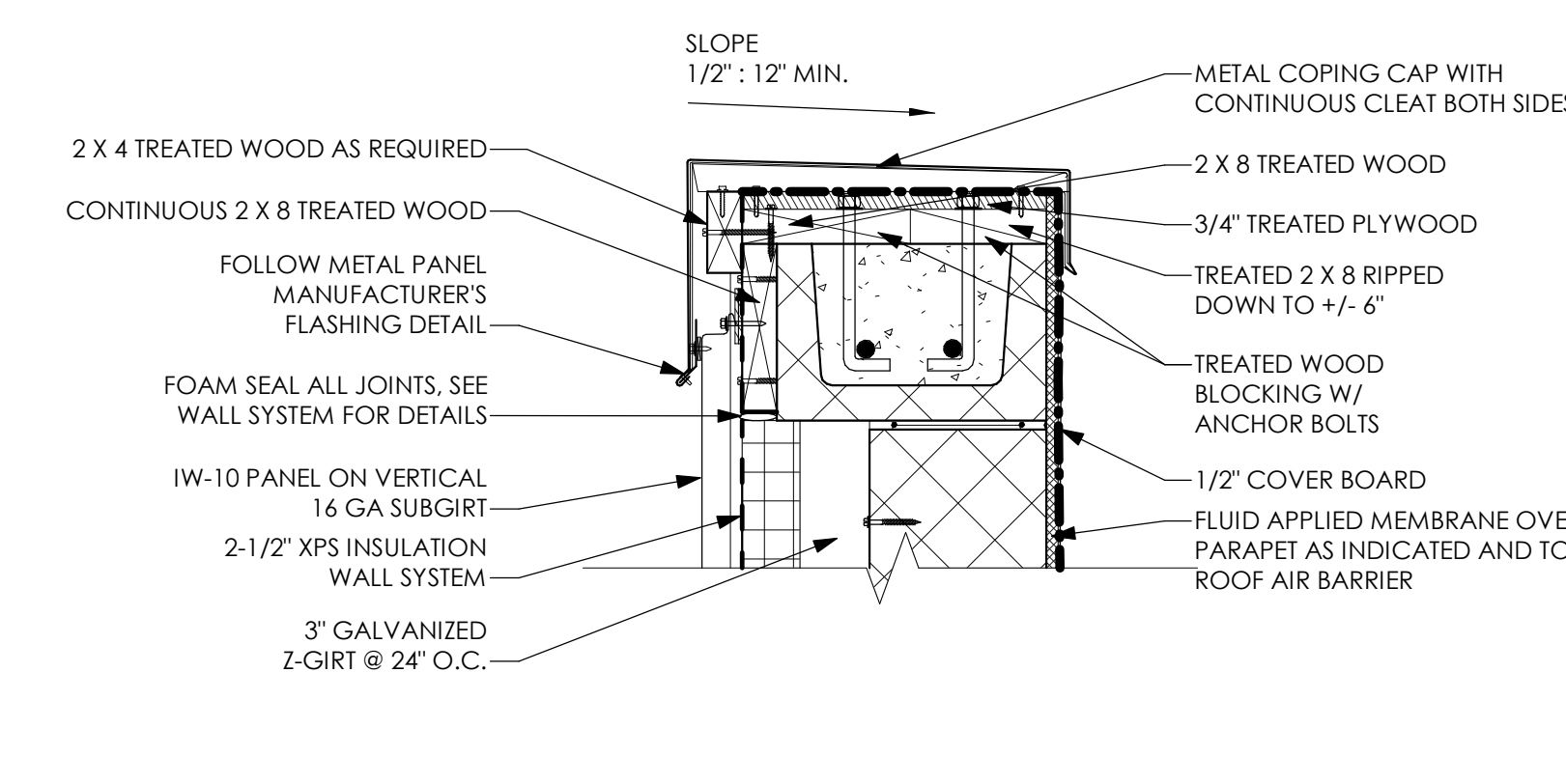
07 METAL PANEL AT 12" CMU WALL

SCALE: 1/2" = 1'-0"



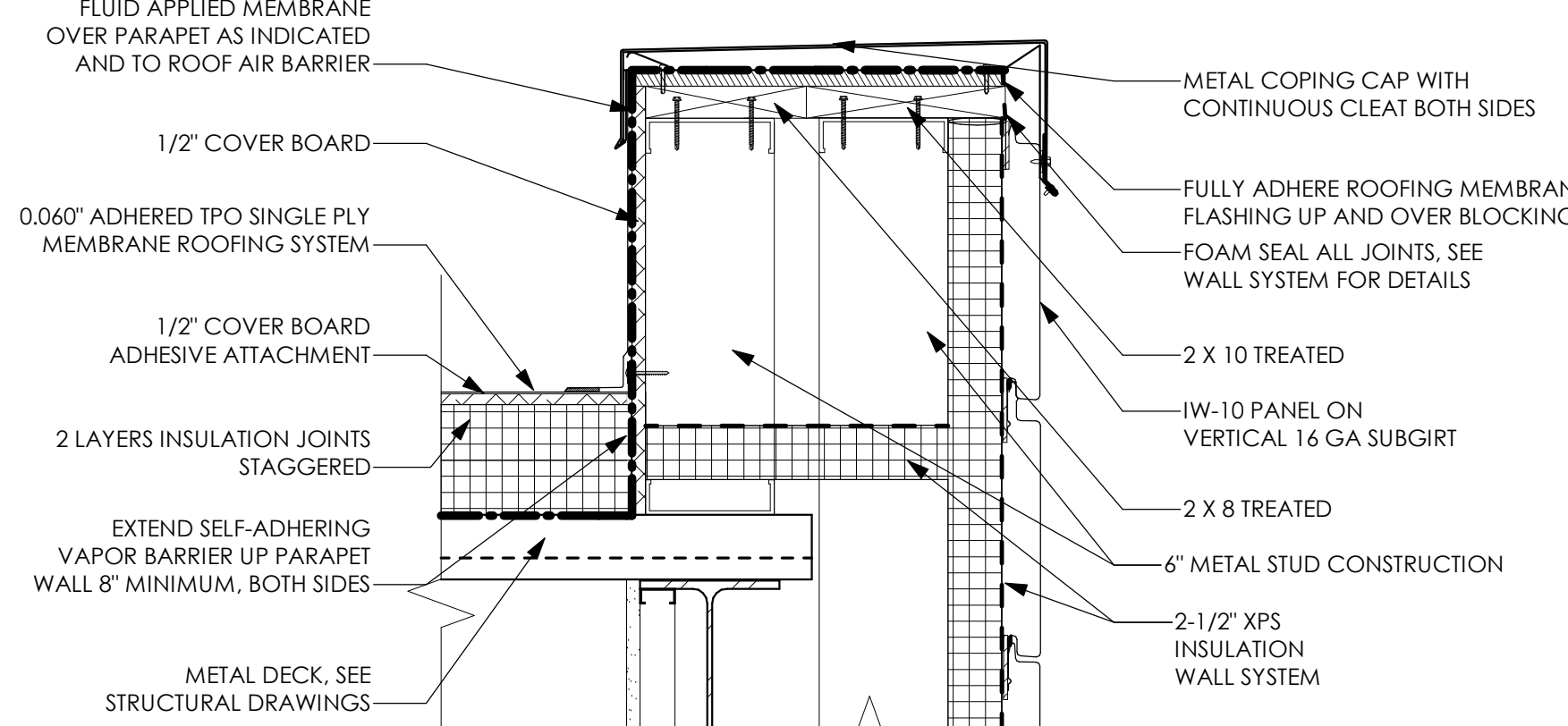
08 METAL PANEL AT STUD WALL

SCALE: 1/2" = 1'-0"



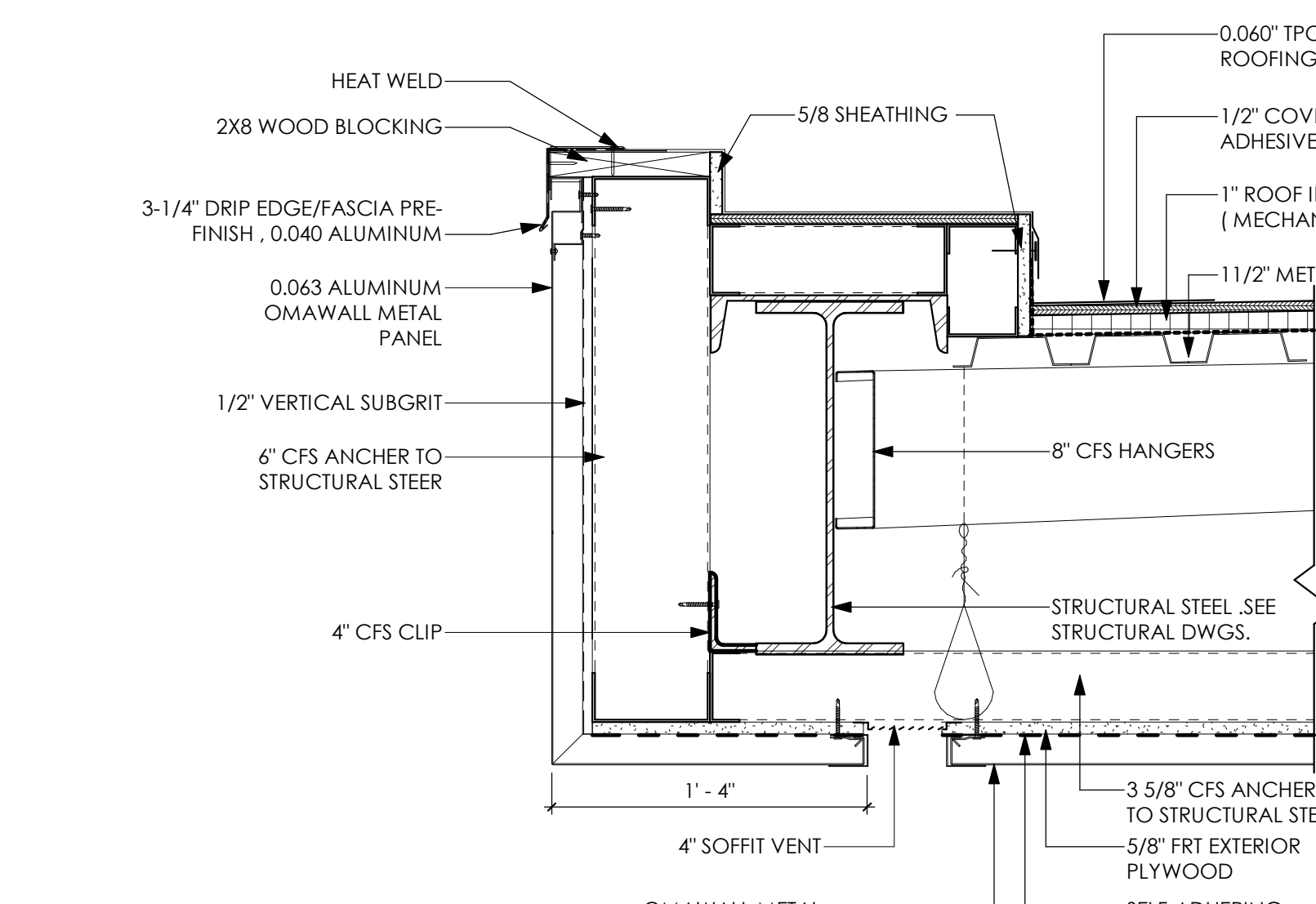
09 METAL PANEL ON 8" BLOCK

SCALE: 1/2" = 1'-0"



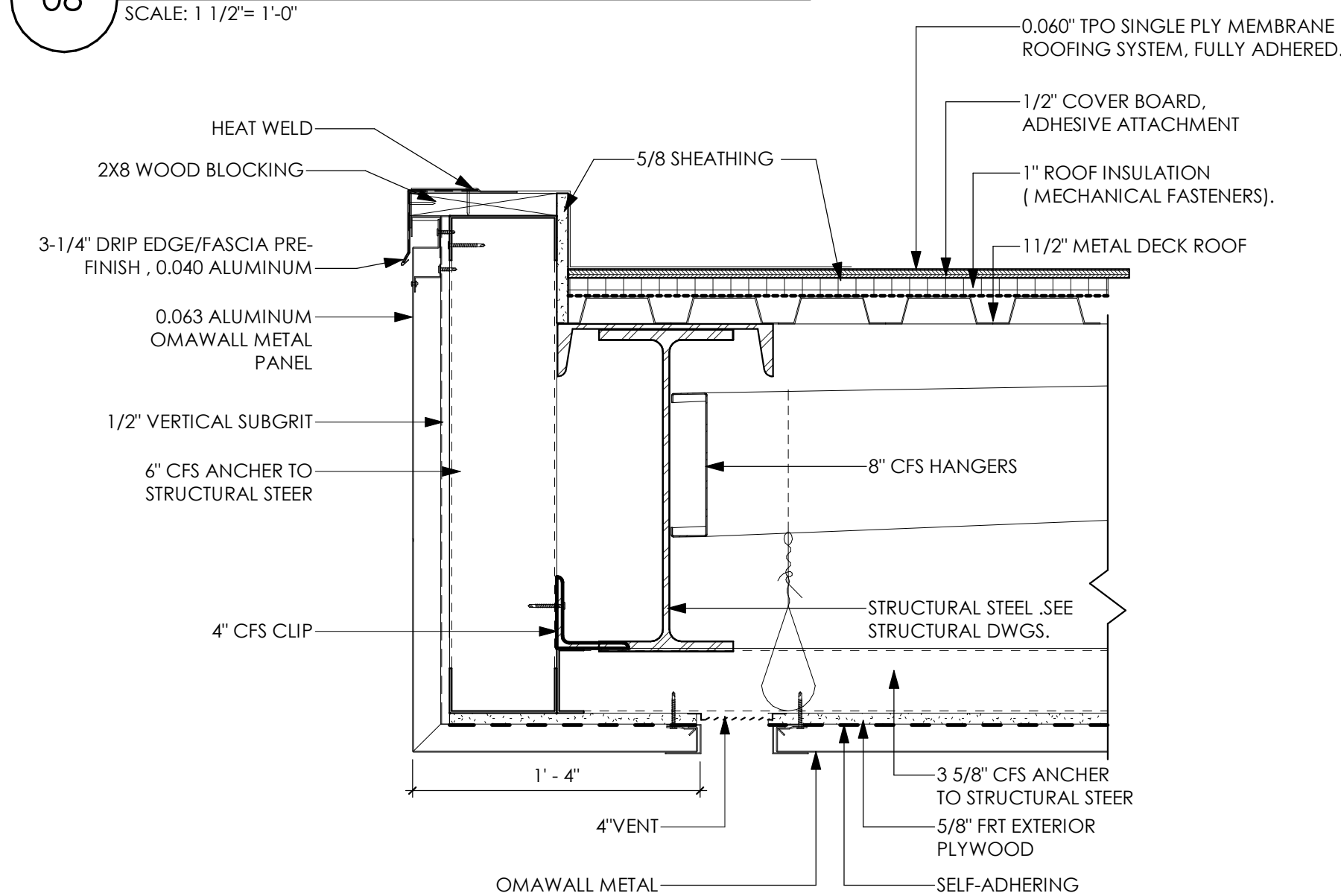
10 METAL PANEL ON STUD

SCALE: 1/2" = 1'-0"



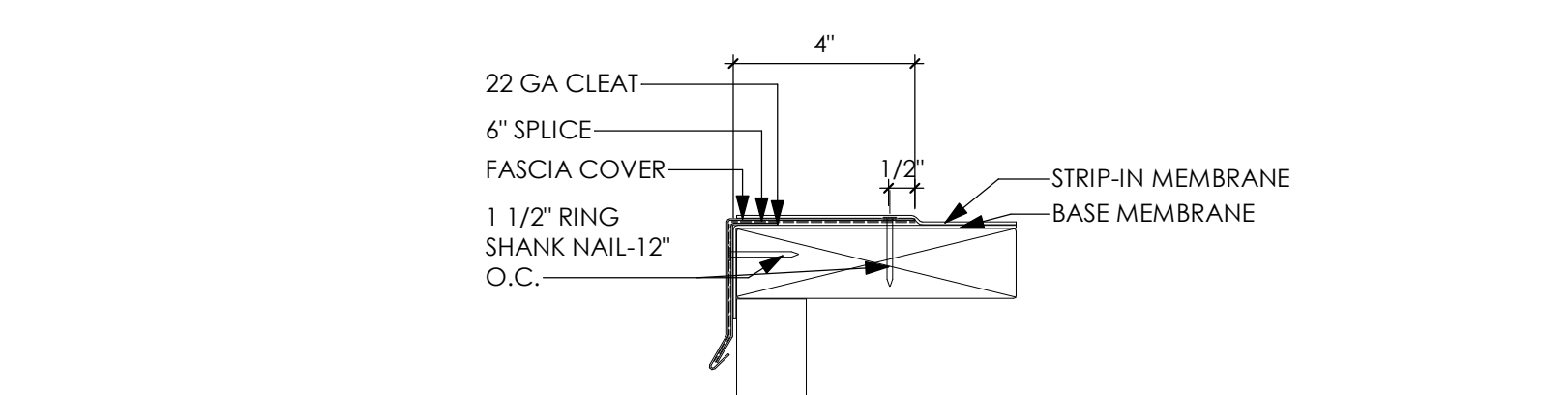
11A HIGH POINT OF MAIN ENTRANCE CANOPY PARAPET

SCALE: 1/2" = 1'-0"



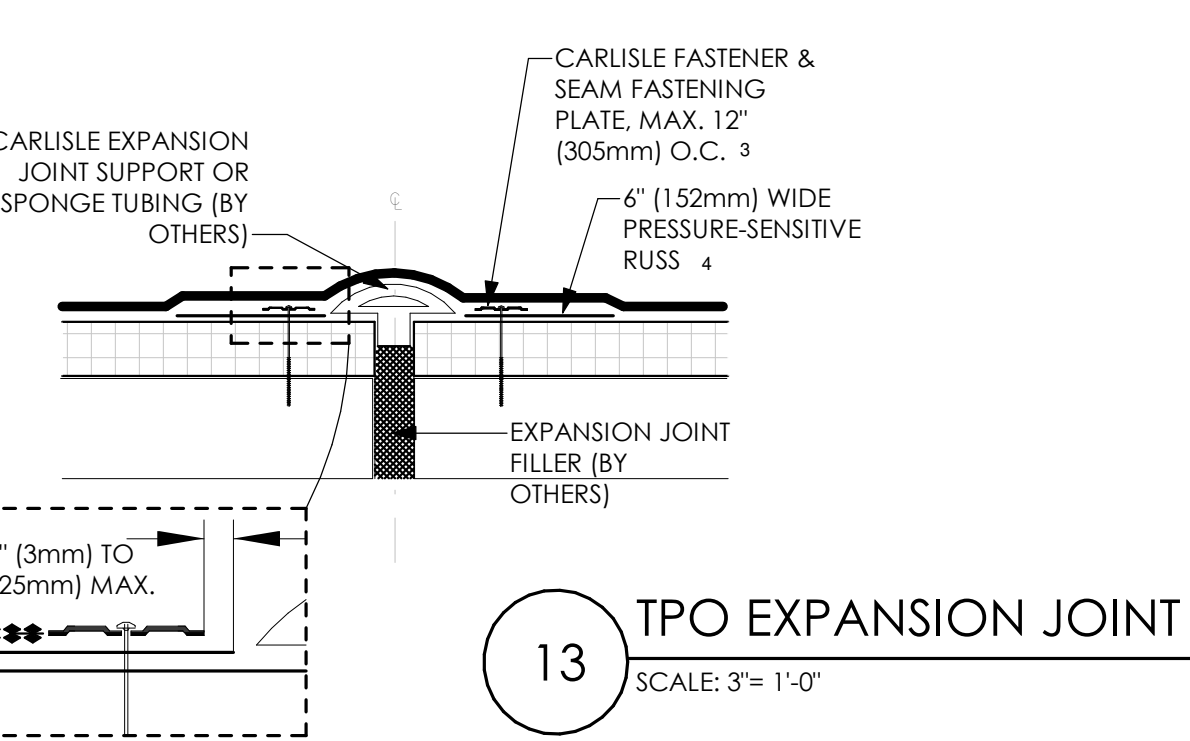
11B LOW POINT OF MAIN ENTRANCE CANOPY PARAPET

SCALE: 1/2" = 1'-0"



14 DRIP EDGE FASCIA

SCALE: 3/4" = 1'-0"



13 TPO EXPANSION JOINT

SCALE: 3/4" = 1'-0"

- NOTES:
- FOR EXPANSION JOINT INTERSECTIONS AND INTERSECTIONS BETWEEN EXPANSION JOINTS TO WALL OR EDGING, USE TWO LAYERS OF PRESSURE-SENSITIVE ELASTOMER FLASHING WITH SECOND LAYER 3" (76mm) LARGER THAN PREVIOUS LAYER IN ALL DIRECTIONS.
  - WIDTH OF JOINT SHALL BE A MINIMUM OF 3/4" (19mm) AND SHALL NOT EXCEED 3" (76mm) WHEN CARLISLE EXPANSION JOINT SUPPORT IS USED.
  - ON MECHANICALLY FASTENED SYSTEMS, HP FASTENERS AND POLYMER SEAM PLATES ARE REQUIRED OVER STEEL DECKS.
  - EPDM PRIMER MUST BE APPLIED TO BACK SIDE OF DECK MEMBRANE PRIOR TO COMPLETING SPLICE TO PRESSURE-SENSITIVE RILLS.