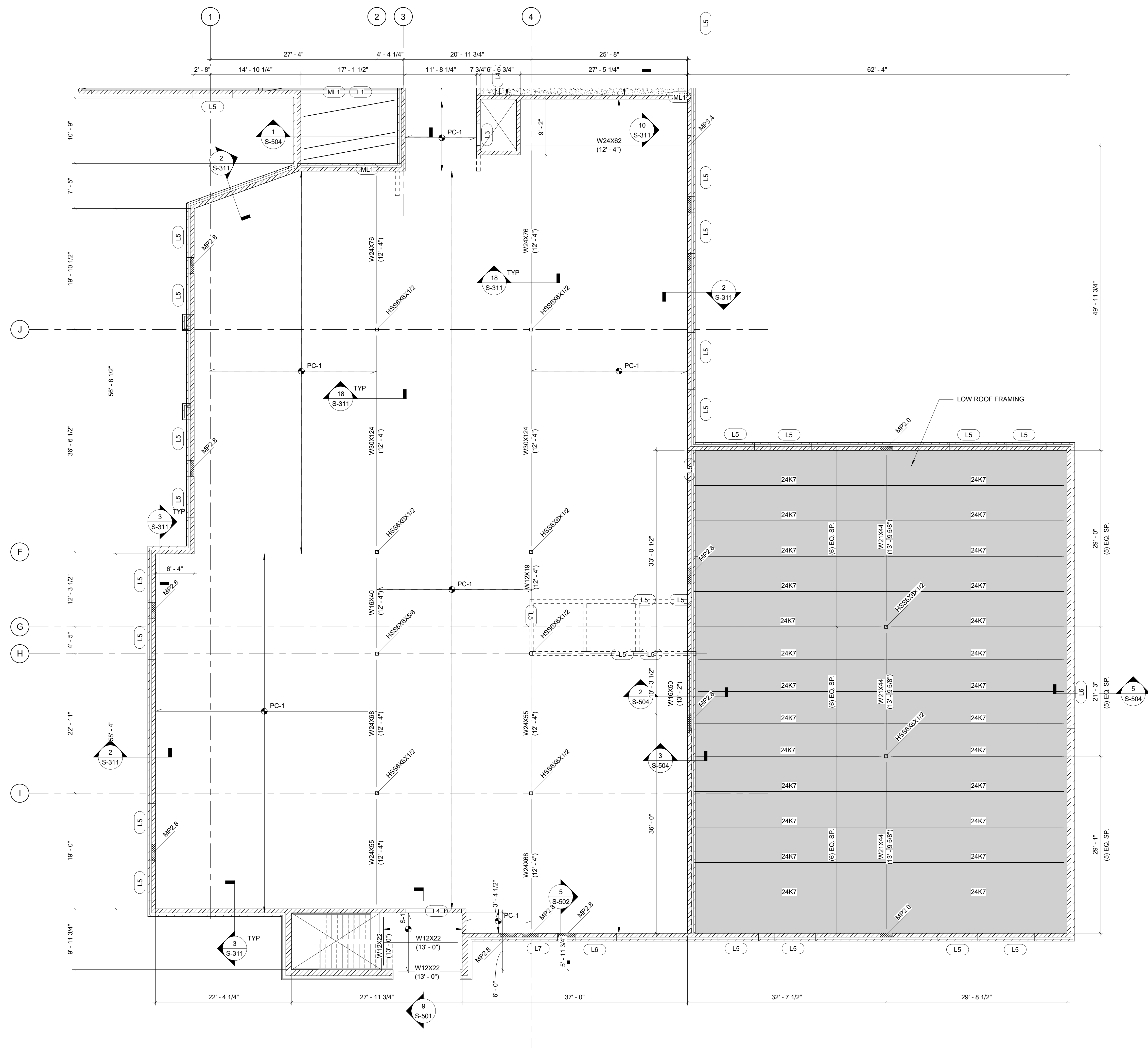
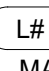
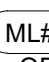


[illegible]

1 SECOND FLOOR FRAMING PLAN - UNIT C

SCALE: 1/8" = 1'-0"

### FLOOR FRAMING NOTES

2. REFERENCE. GENERAL NOTES: 5-001 - 5-002, SPECIAL DETAILS 5-300 SERIES
3. VERIFY ALL ELEVATIONS AND DIMENSIONS SHOWN WITH ARCHITECTURAL DRAWINGS AND EQUIPMENT SUPPLIERS SHOP DRAWINGS PRIOR TO FABRICATION AND INSTALLATION OF STRUCTURAL STEEL.
4. FLOOR SLAB CONSTRUCTION:
- A. PC-1: 1" PRECAST CONCRETE PLANK WITH 2" NORMAL WEIGHT CONCRETE TOPPING SLAB REINFORCED WITH SYNTHETIC MACROFIBERS, RECOMMENDED COVER IS 3.0 LBC/U. V.D.
- B. PC-2: 12" PRECAST CONCRETE PLANK WITH 4" OF RIGID INSULATION AND 4" NORMAL WEIGHT CONCRETE TOPPING SLAB REINFORCED WITH SYNTHETIC MACROFIBERS, RECOMMENDED COVER IS 3.0 LBC/U. V.D.
5. ELEVATIONS NOTED THIN, (X<X'') ARE NOTED FOR TOP OF STEEL ELEVATIONS, REFERRED FROM DATUM ELEVATION OF 0'-0".
6. FIELD VERIFY ALL DIMENSIONS PRIOR TO FINAL DETAILS AND FABRICATION. IF ANY EXISTING CONDITION IS NOT AS SHOWN, CONTACT AE BEFORE PROCEEDING WITH WORK.
7. NOTIFY AOR AND EOR OF ANY DISCREPANCIES BETWEEN THE ARCHITECTURAL AND STRUCTURAL DRAWINGS PRIOR TO FABRICATION AND/OR INSTALLATION OF WORK.
8. ALL DECK EDGES AT FLOOR OPENINGS SHALL BE ADEQUATELY SUPPORTED, FLOOR OPENING SUPPORT AND DETAILS ARE TO BE DESIGNED BY PRECAST MANUFACTURER, COORDINATE WITH ARCHITECTURAL AND ELECTRICAL, MECHANICAL, ELECTRICAL, PLUMBING DRAWINGS.
9. ALL MECHANICAL UNITS SHALL BE PLACED ON RAISED CONCRETE CURBS. SEE TYPICAL CONCRETE DETAILS.
10. ALL PENETRATIONS IN THE SLAB RATHER THAN 12"x12" SHALL BE CONSTRUCTED WITH A RAISED 3.0" CONCRETE CURB AT THE PERIMETER OF THE OPENING. SEE TYPICAL CONCRETE DETAILS.
11. LINTELS ARE REQUIRED AT ALL MASONRY OPENINGS. COORDINATE ALL MASONRY OPENINGS AND DIMENSIONS WITH ARCHITECTURAL, MECHANICAL, ELECTRICAL, PLUMBING DRAWINGS. SEE TYPICAL CONCRETE LINTEL, SCHEDULE AND TYPICAL LINTEL DETAILS. UNO. NOTE: NOT ALL OPENINGS ARE SHOWN ON THE DRAWINGS.
12.  DENOTES STEEL LINTEL. STEEL LINTELS ARE REQUIRED AT ALL MASONRY OPENINGS GREATER THAN 4'-0". SEE LINTEL, SCHEDULE AND 5-300 S AND GENERAL NOTES.
13.  DENOTES MASONRY LINTEL. MASONRY LINTEL MAY BE USED AT OPENINGS LESS THAN 4'-0". SEE LINTEL, SCHEDULE AND 5-300 S AND GENERAL NOTES.
14. COORDINATE CLOSURE PLATE AT VARIOUS FINISHES WITH ARCHITECTURAL DRAWINGS. MINIMUM PLATE THICKNESS IS 3/8".
5. — I — DENOTES BEAM SPLICE. SEE TYPICAL SPLICE DETAIL.

### ROOF FRAMING NOTES

2. REFERENCE: GENERAL NOTES: S-001 - S-002, TYPICAL DETAILS - S-300 SERIES
3. VERIFY ALL ELEVATIONS AND DIMENSIONS SHOWN WITH ARCHITECTURAL DRAWINGS AND EQUIPMENT SUPPLIERS SHOP DRAWINGS PRIOR TO FABRICATION AND INSTALLATION OF STRUCTURAL STEEL
4. ROOF STRUCTURE:
  - A. TYPICAL ROOF DECK: 1 1/2"X36" TYPE B, GALVANIZED AND PRIMED, WIDE RIB METAL ROOF DECK WITH A MINIMUM THREE SPAN CONDITION.
  - B. CAFETERIA AND GYMNASIUM ROOF DECK: 3"X36" TYPE B, GALVANIZED AND PRIMED, WIDE RIB METAL ACOUSTIC ROOF DECK WITH A MINIMUM THREE SPAN CONDITION.
  - C. SEE GENERAL NOTES FOR DECK FASTENING PATTERN.
  - D. COORDINATE ALL ROOF SLOPES, ELEVATIONS, AND DRAINAGE LOCATIONS WITH ARCHITECTURAL AND PLUMBING DRAWINGS.
  - E. ROOF TOP EQUIPMENT NOT SHOWN. COORDINATE LOCATION, SIZE, AND QUANTITY OF ROOF OPENINGS AND PENETRATIONS (HATCHES: EXHAUST FAN, ETC.) WITH ARCHITECTURAL, MECHANICAL, PLUMBING, AND ELECTRICAL DRAWINGS. MARK LOCATION AND SIZE OF OPENINGS ON SHOP DRAWINGS PRIOR TO SUBMITTING FOR REVIEW.
  - F. PROVIDE ROOF OPENING FRAME FOR ALL OPENINGS AND PENETRATIONS THROUGH THE ROOF PER TYPICAL DETAIL.
5. GENERAL CONTRACTOR SHALL COORDINATE ROOF TOP EQUIPMENT DIMENSIONS WITH APPROVED MANUFACTURER DRAWINGS.
  - A. SUPPORT FRAMING SHOWN IS FOR THE EQUIPMENT SPECIFIED ON MECHANICAL DRAWINGS. IF A DIFFERENT UNIT IS TO BE USED, CONTACT STRUCTURAL ENGINEER BEFORE PROCEEDING.
  - B. SET EQUIPMENT CURB ON ROOF FRAMING MEMBERS OR SUPPORT MEMBERS RUNNING BETWEEN THEM. DO NOT PLACE CURB ON UNSUPPORTED ROOF DECK.
6. FIELD VERIFY ALL DIMENSIONS PRIOR TO FINAL DETAILING AND FABRICATION. IF ANY DISCREPANCY CONDITION IS NOT AS SHOWN, CONTACT A/E BEFORE PROCEEDING WITH WORK.
7. LUNETLS ARE REQUIRED AT ALL MASONRY OPENINGS. COORDINATE ALL MASONRY OPENINGS WITH ARCHITECTURAL, MECHANICAL, ELECTRICAL, AND PLUMBING DRAWINGS. REFER TO TYPICAL LUNTEL SCHEDULE L AND TYPICAL LUNTEL DETAILS. NOTE: NOT ALL OPENINGS ARE SHOWN ON PLAN.
  - A. L1F DENOTES STEEL LUNTEL. STEEL LUNTELS ARE REQUIRED AT ALL MASONRY OPENINGS GREATER THAN 4" SEE LUNTEL SCHEDULE ON S-330 AND GENERAL NOTES.
  - B. L1M DENOTES MASONRY LUNTEL. MASONRY LUNTEL CAN BE USED AT OPENINGS LESS THAN 4" SEE LUNTEL SCHEDULE ON S-320 AND GENERAL NOTES.
  - C. COORDINATE REQUIRED CLOSURE PLATES AND DIMENSIONS AT VARIOUS FINISHES WITH ARCHITECTURAL DRAWINGS. MINIMUM PLATE THICKNESS IS 3/8" UNLESS WE LDED TO OTHERWISE SPECIFIED.

LEVEL SCHEDULE	
Name	Elevation
TOM MECHANICAL ROOM	33' - 4"
ROOF	26' - 0"
T/STL ENTRY CANOPY	23' - 8"
T/CMU CAFETERIA	22' - 0"
SECOND FLOOR	13' - 4"
T/STL SECOND FLOOR	12' - 4"
FIRST FLOOR	0' - 0"
T/FOUNDATION (TYP UNO)	-1' - 4"

