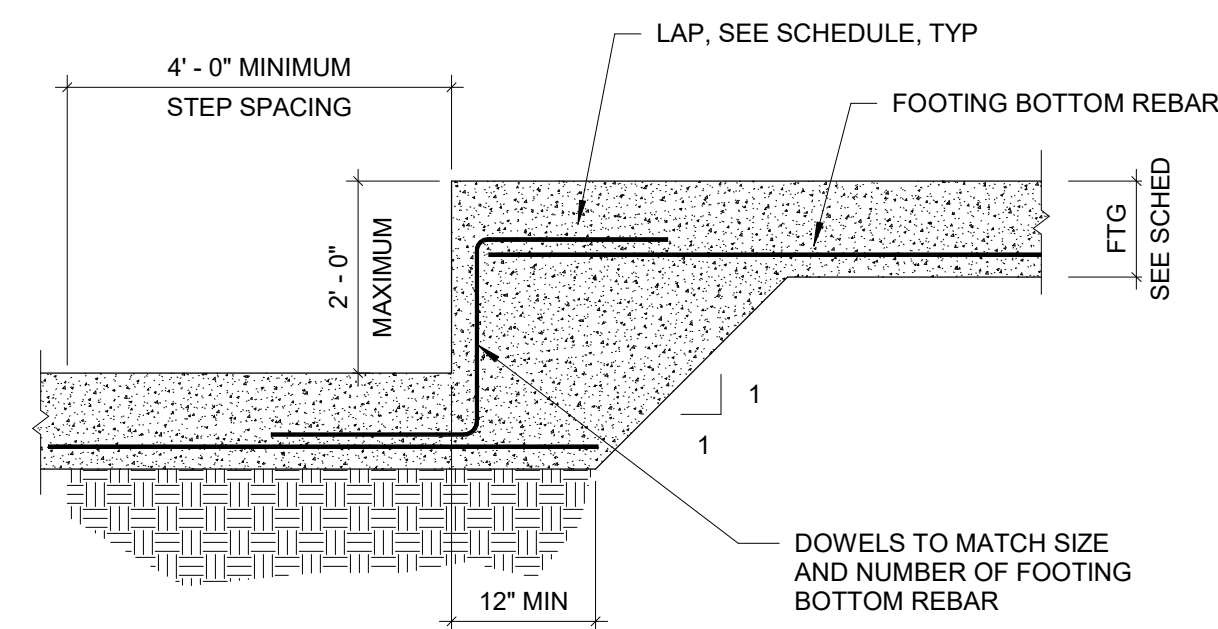
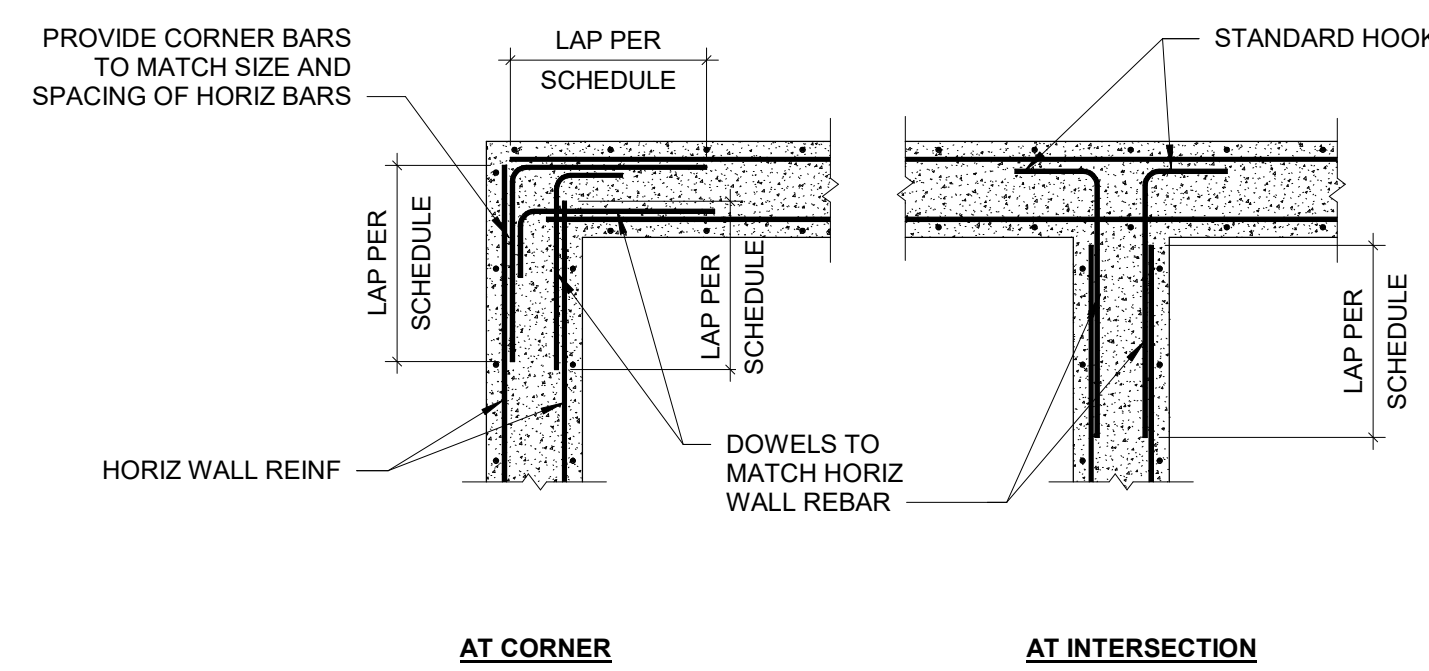


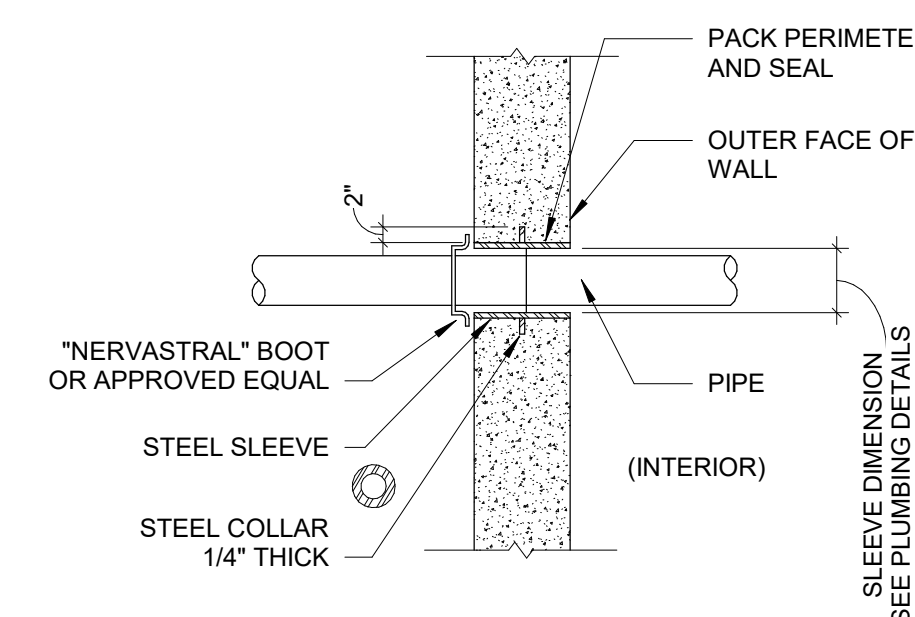
1 TYPICAL FOOTING PENETRATION  
DETAIL  
SCALE: NONE



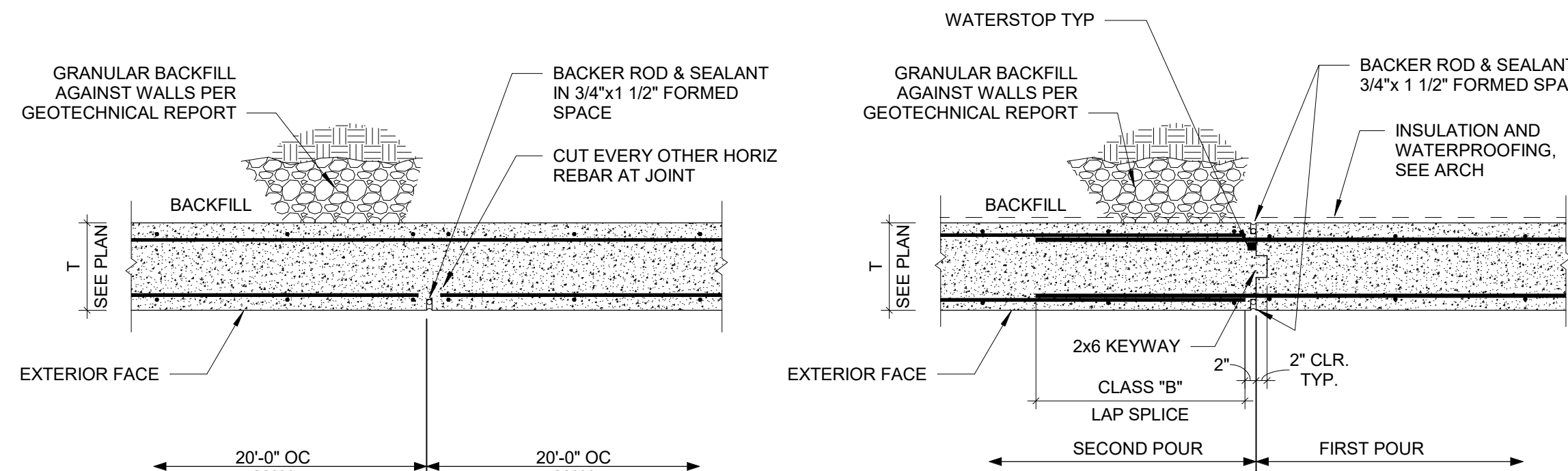
2 TYPICAL FOOTING STEP DETAIL  
SCALE: NONE



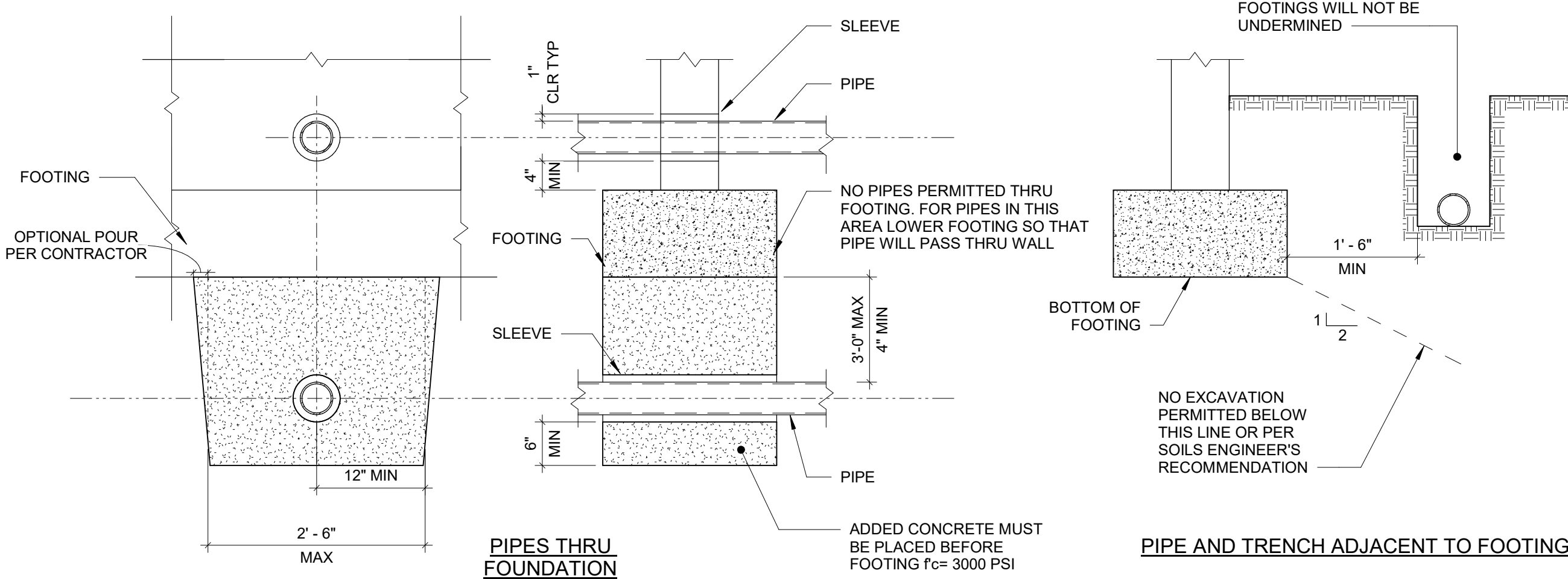
3 TYPICAL CONCRETE WALL CONSTRUCTION DETAILS  
SCALE: NONE



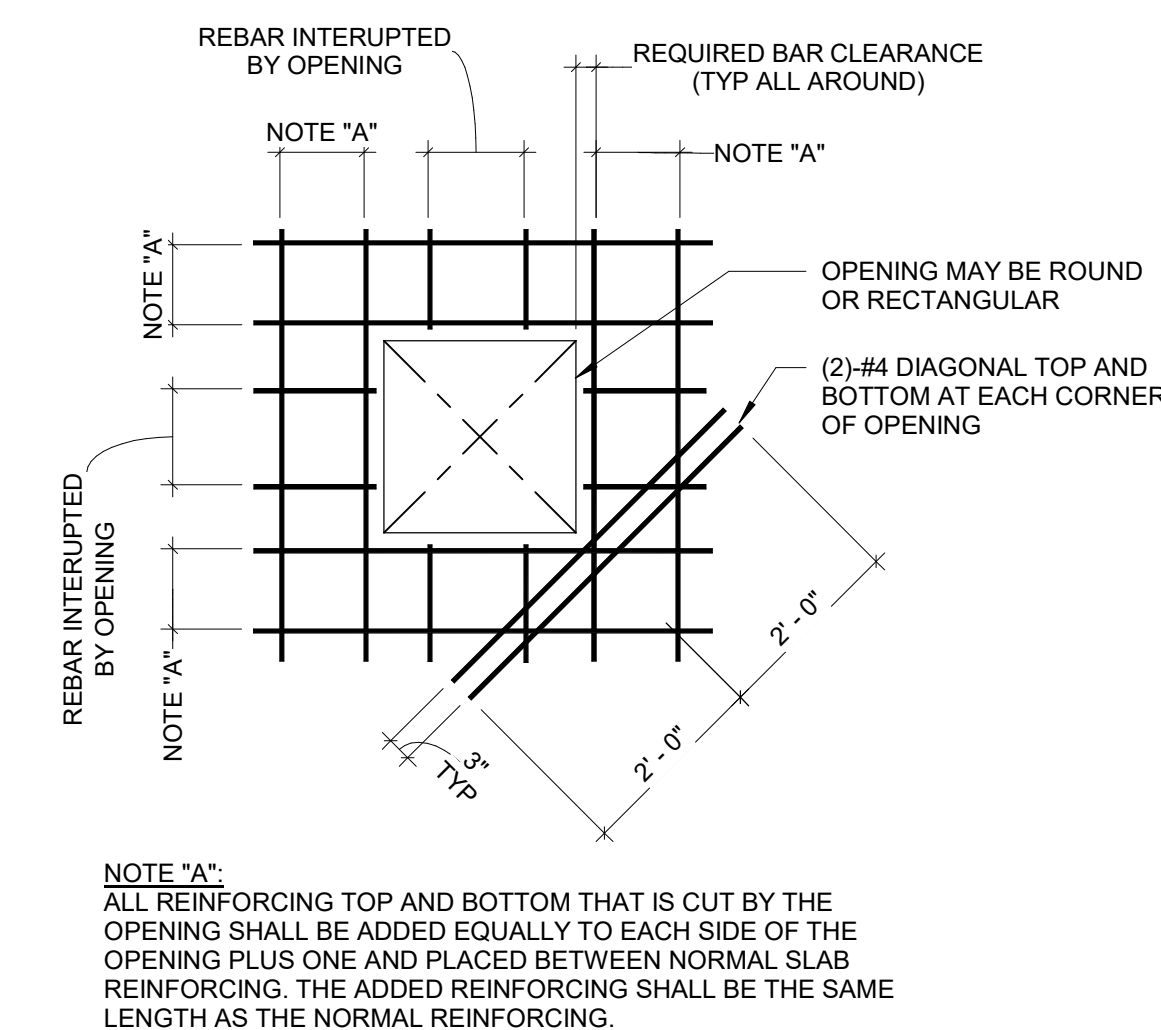
4 TYPICAL CONCRETE WALL  
CONSTRUCTION DETAILS  
SCALE: NONE



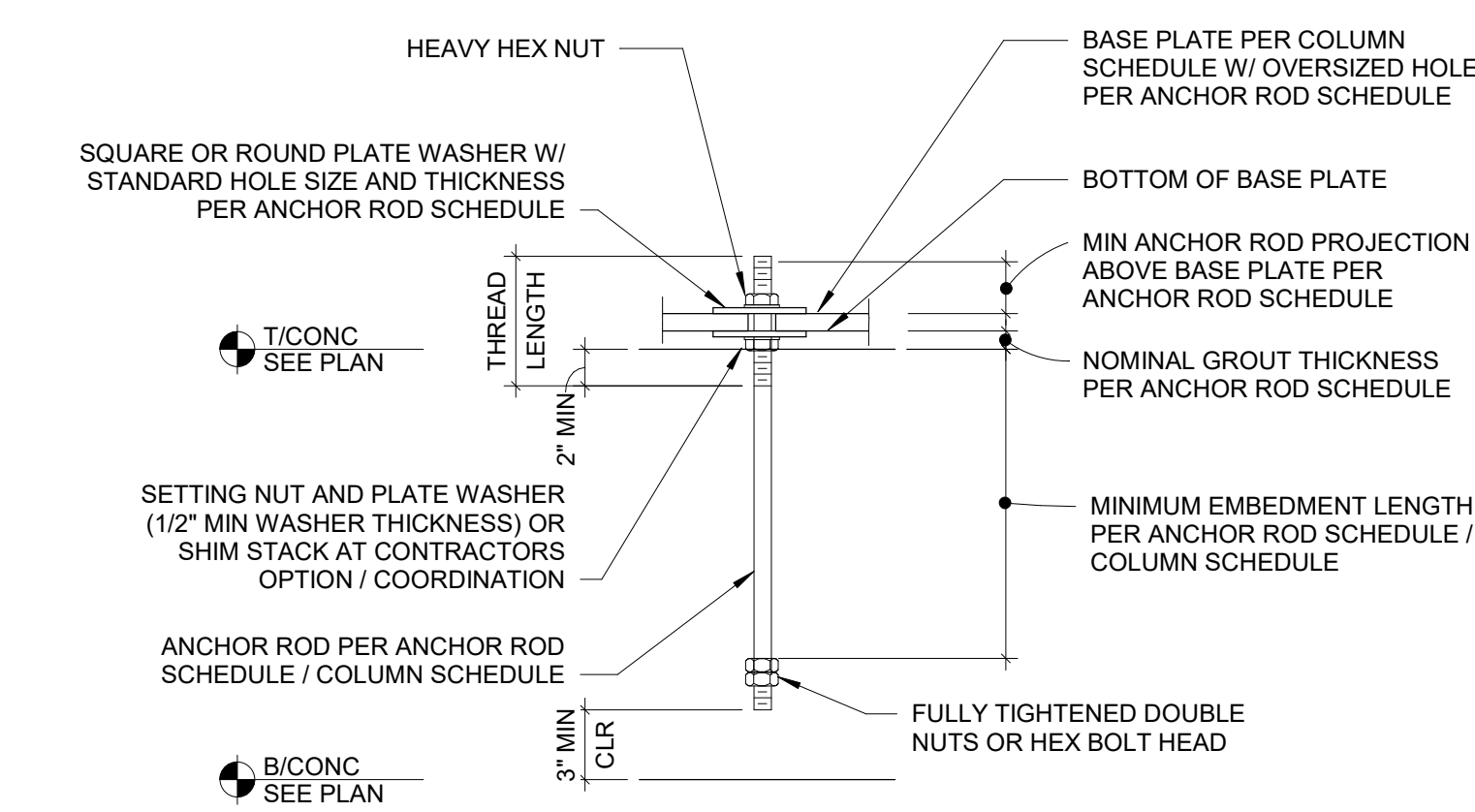
5 TYPICAL CONCRETE WALL JOINT DETAILS  
SCALE: NONE



6 TYPICAL UTILITY PIPE THRU/ADJACENT TO FOUNDATION  
SCALE: NONE

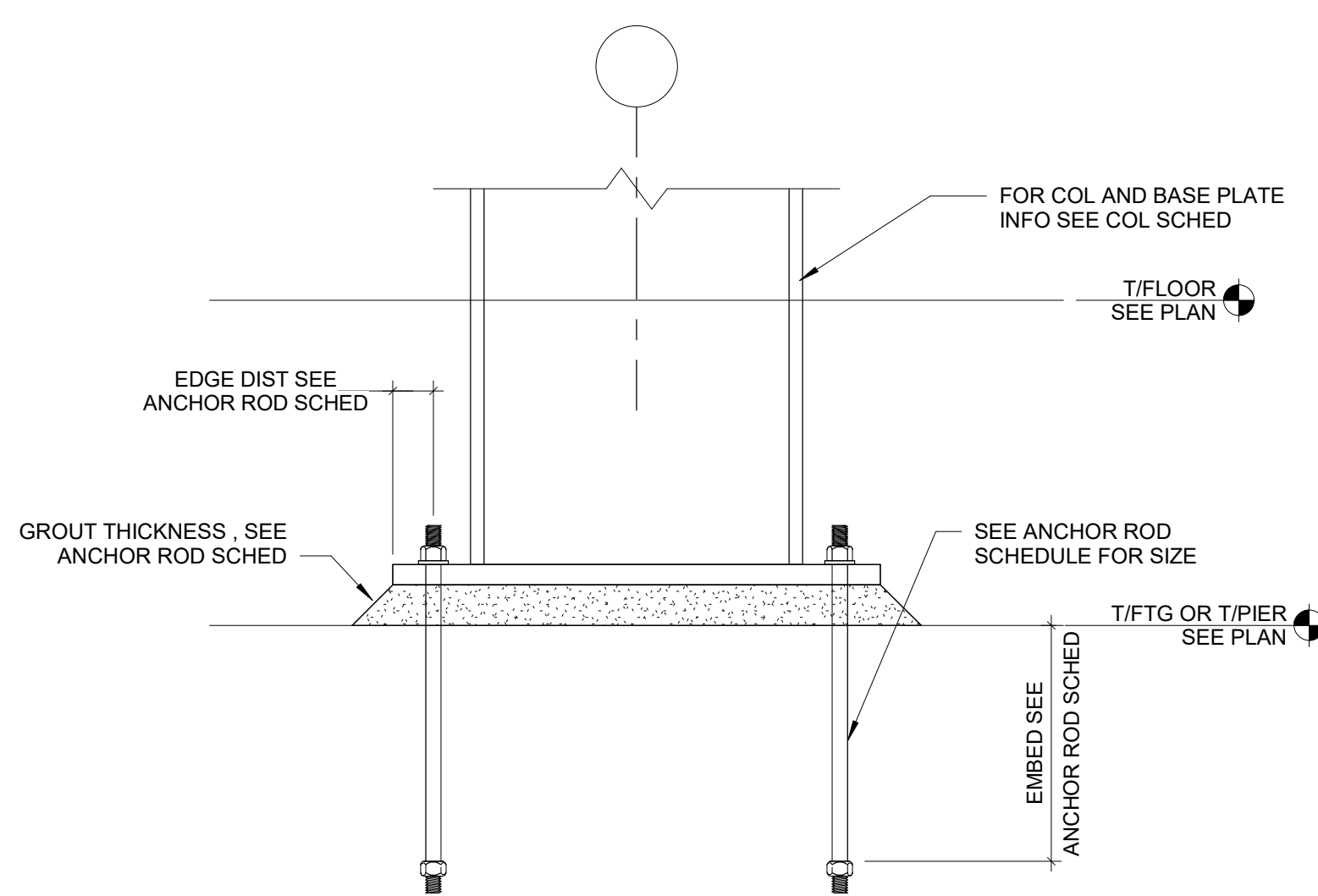


7 TYPICAL REINFORCING AROUND  
OPENING IN CONC SLAB/WALL  
SCALE: NONE

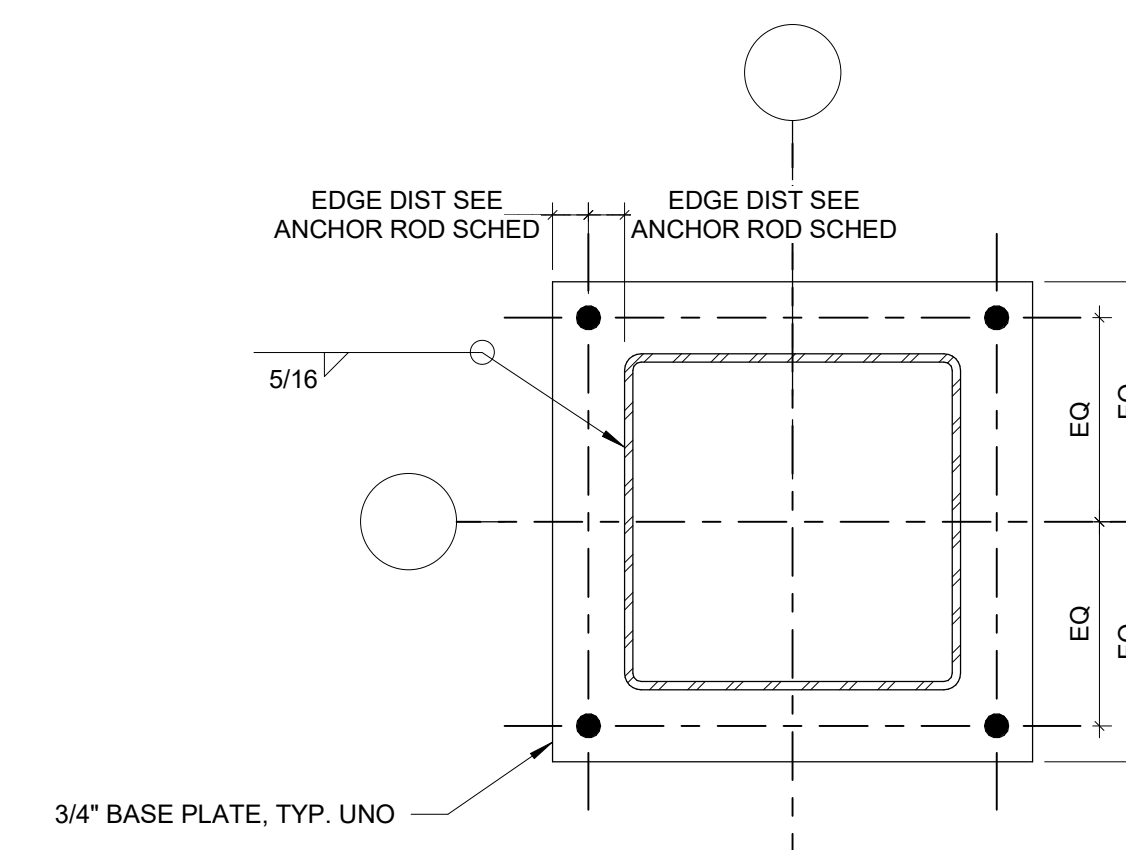


ANCHOR ROD SCHEDULE							
ANCHOR ROD DIAMETER (IN)	BASE PLATE HOLE DIA (IN)	MIN WASHER SIZE (IN)	MIN WASHER THICKNESS (IN)	MIN PROJ ABOVE BASE PLATE (IN)	NOM GROUT THICKNESS (IN)	EDGE DISTANCE (IN)	EMBEDMENT
3/4	1 5/16	2	1/4	3	2	1 1/2	7"
1	1 13/16	3	3/8	3 1/2	2	2	10"

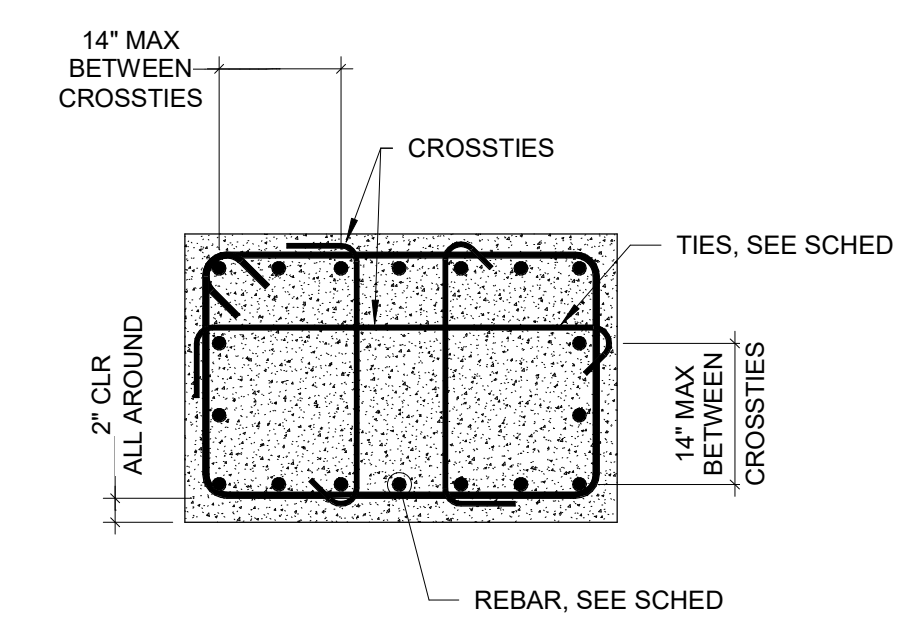
8 TYPICAL ANCHOR ROD DETAIL AND SCHEDULE  
SCALE: 1 1/2" = 1'-0"



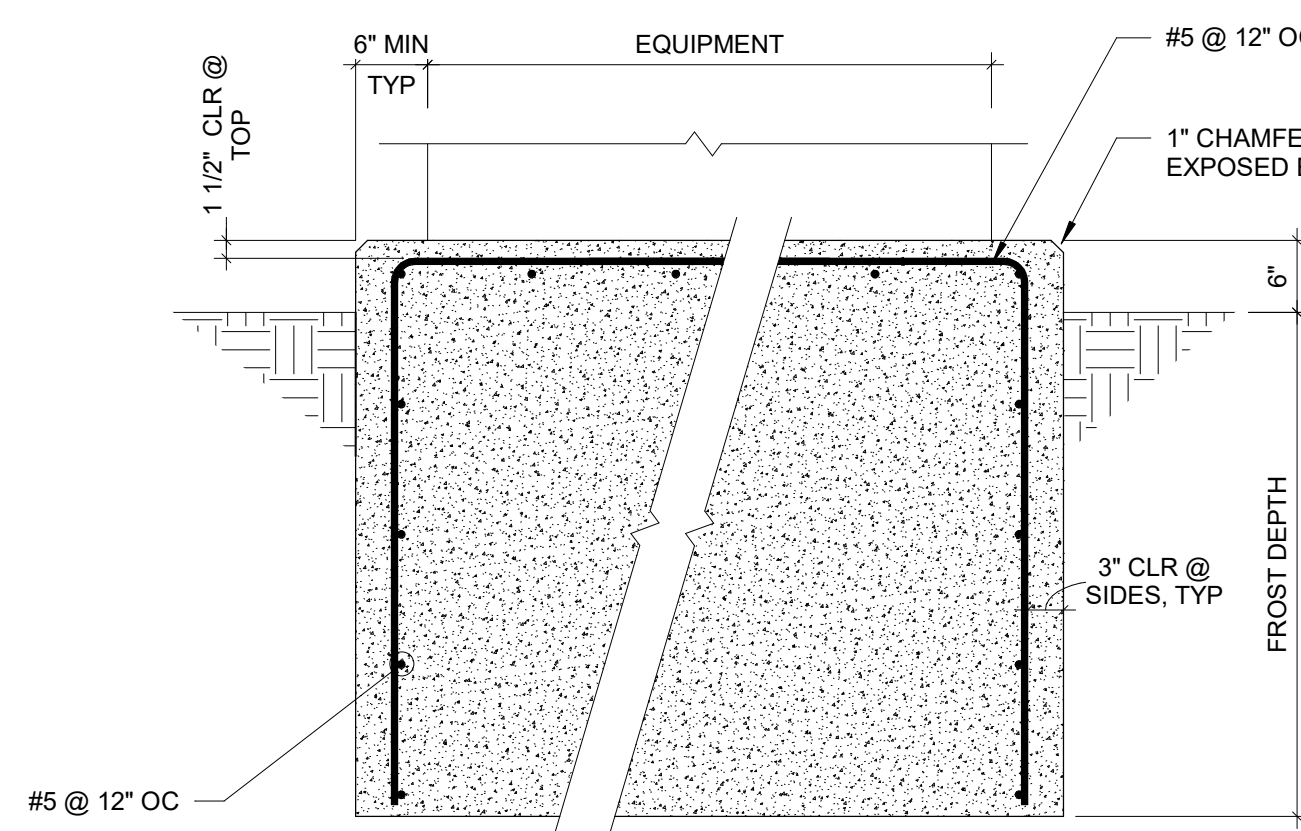
9 TYPICAL COLUMN BASE DETAIL  
SCALE: 1 1/2" = 1'-0"



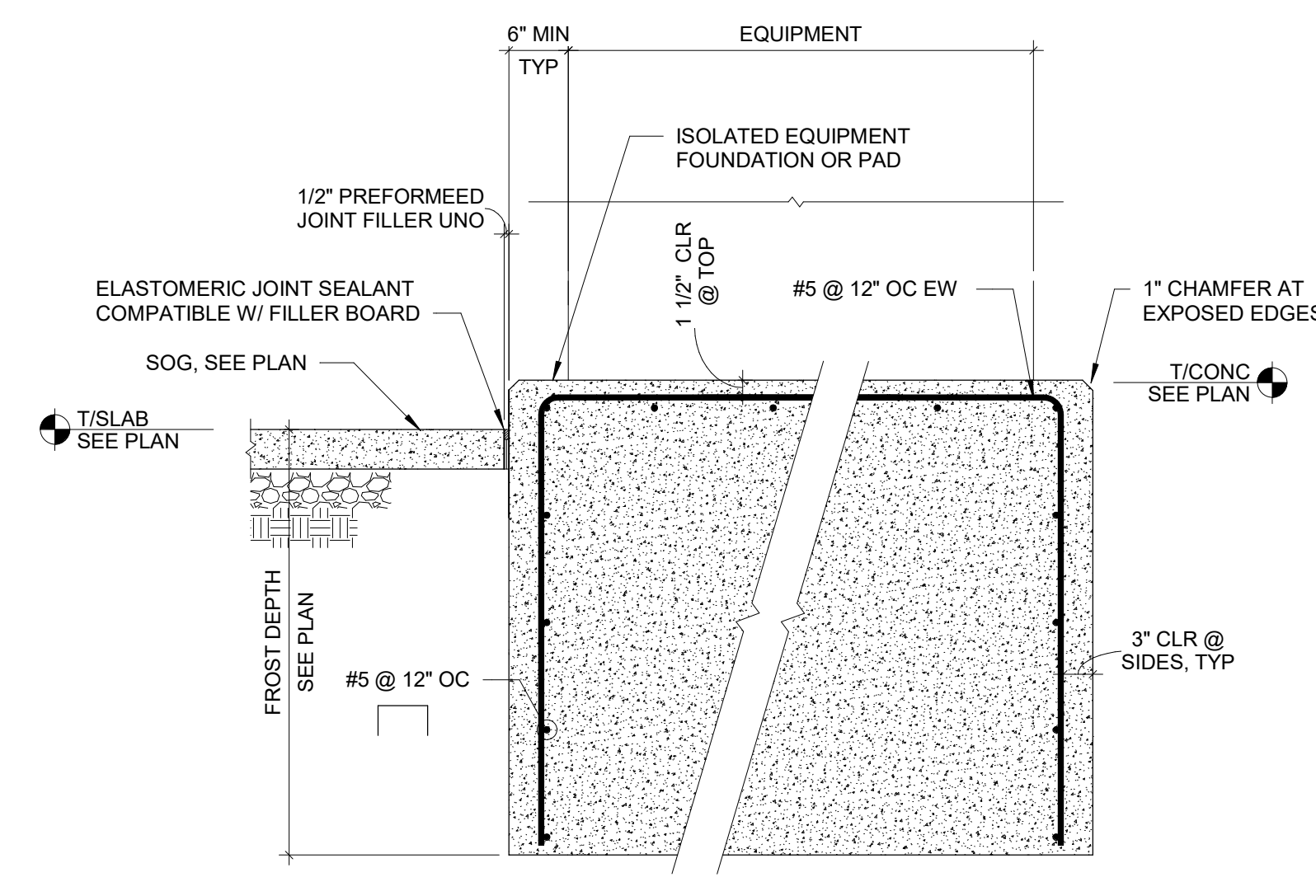
10 BASE PLATE DETAILS  
SCALE: 1 1/2" = 1'-0"



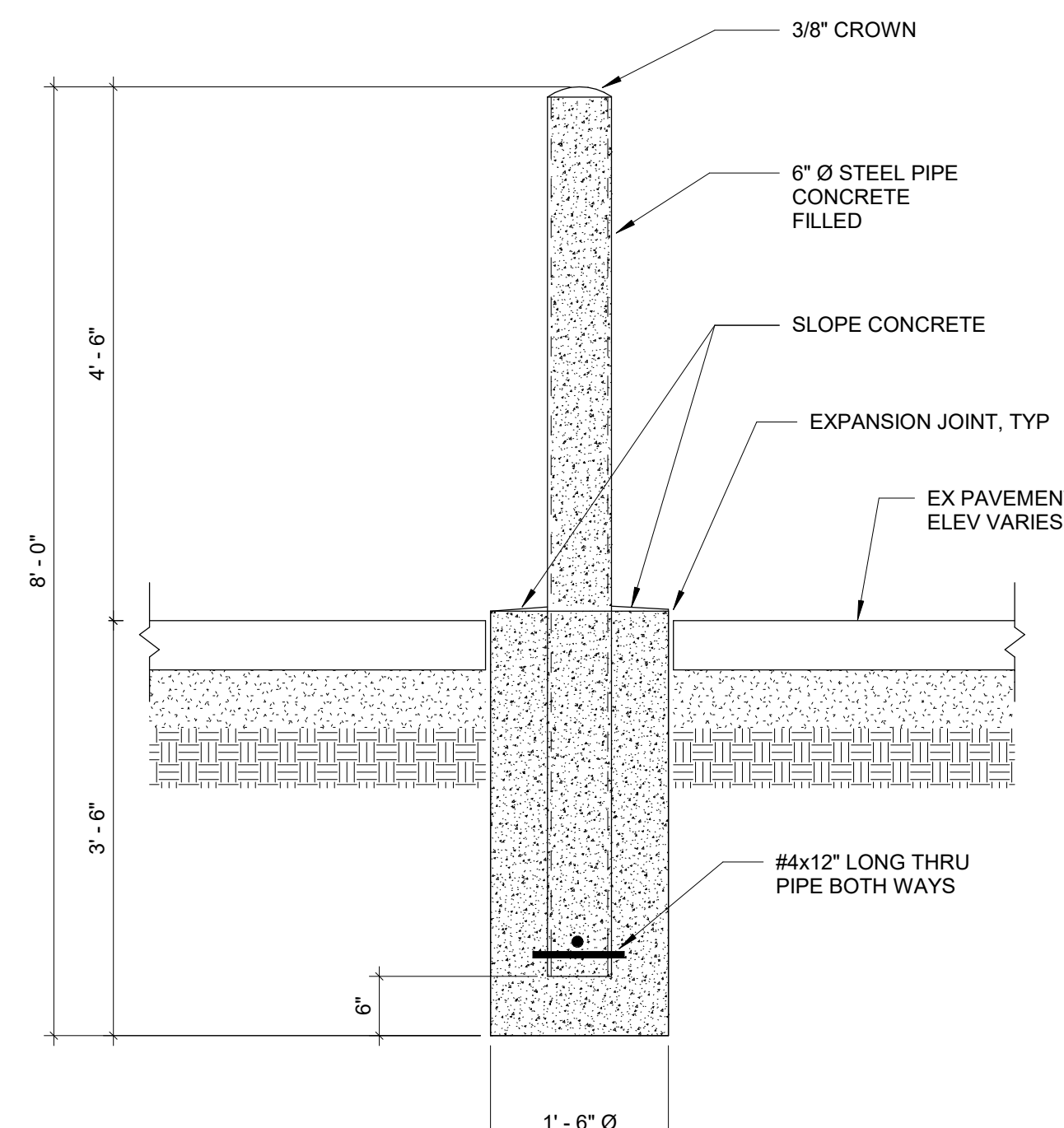
11 RECTANGULAR COLUMN/PIER  
SCALE: 3/4" = 1'-0"



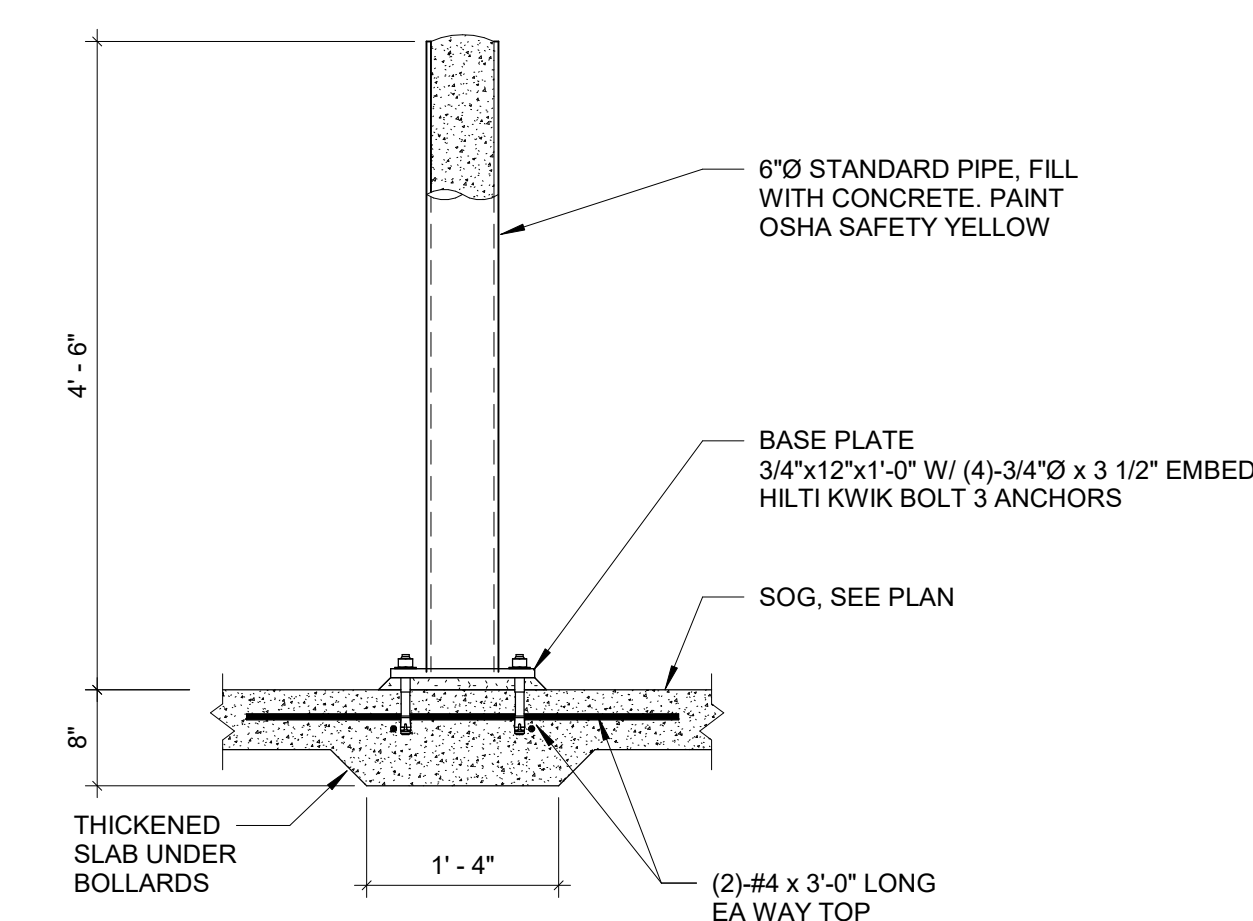
12 TYPICAL OUTDOOR EQUIPMENT PAD  
SCALE: 3/4" = 1'-0"



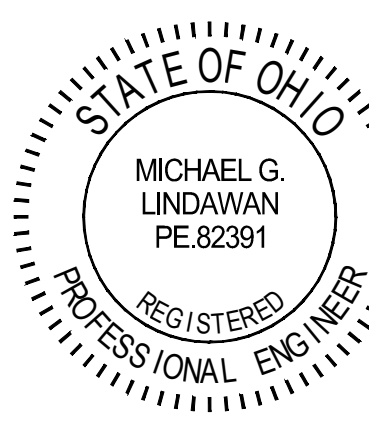
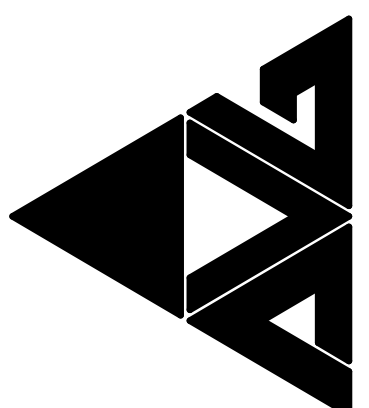
13 ISOLATED EQUIPMENT PAD DETAIL  
SCALE: 3/4" = 1'-0"



14 TYPICAL EXTERIOR BOLLARD DETAIL  
SCALE: 3/4" = 1'-0"



15 TYPICAL INTERIOR BOLLARD DETAIL  
SCALE: 3/4" = 1'-0"

[illegible]