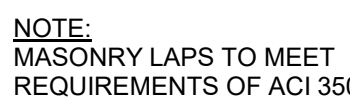


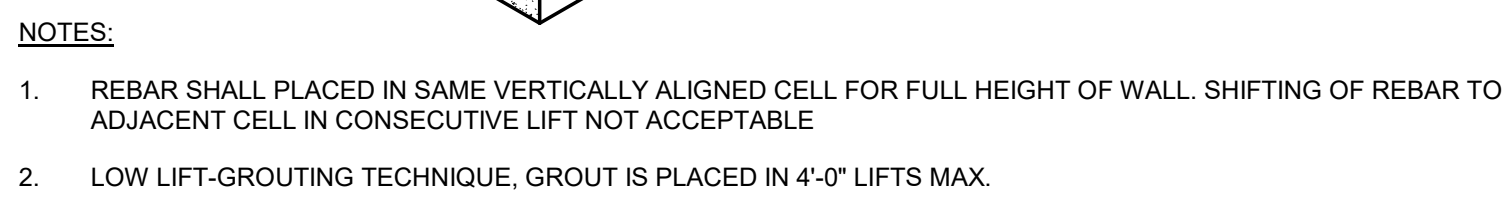
SCALE: NONE



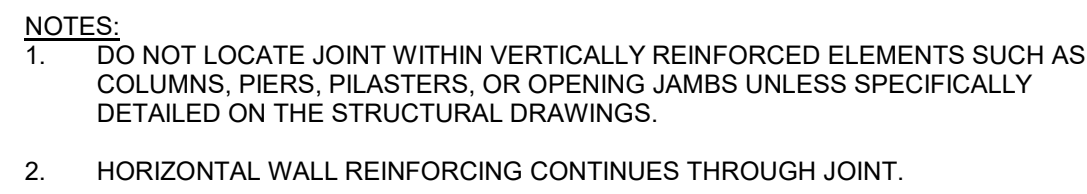
SCALE: 3/4" = 1'-0"



SCALE: 3/4" = 1'-0"



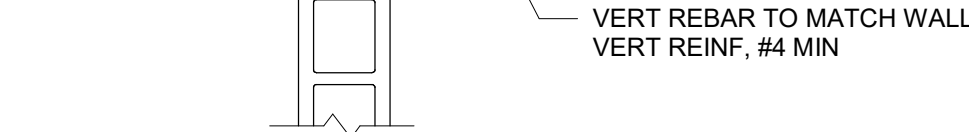
SCALE: NONE



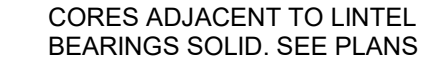
SCALE: 3/4" = 1'-0"



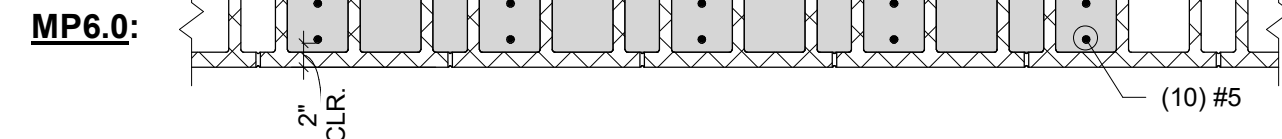
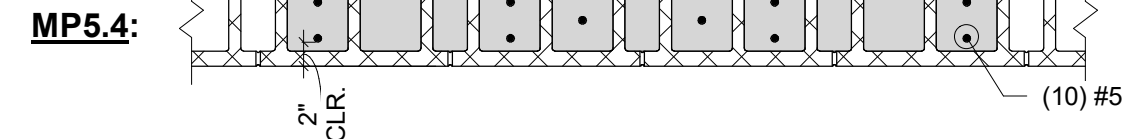
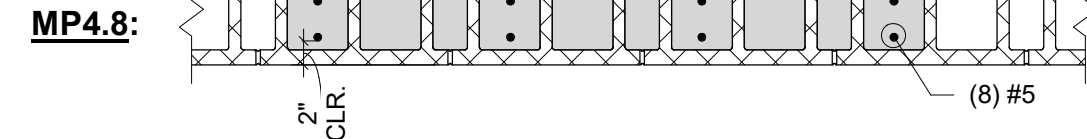
SCALE: NONE



SCALE: NONE



SCALE: NONE



SCALE: 3/4" = 1'-0"

NOTES:

1. L1 TO L4 : PROVIDE ONE ANGLE PER 4" OF WALL WIDTH
2. BOTTOM PLATE + ANGLE ASSEMBLY MAY BE REQUIRED TO SUPPORT VENEER, SEE WALL SECTIONS AND COORDINATE WALL FINISH WITH ARCHITECTURAL DRAWINGS
3. LINTELS WITH BOTTOM PLATE: BOTTOM PLATE WIDTH TO BE 1" LESS THAN NOMINAL WALL WIDTH
4. ALL LINTELS AND ALL COMPONENTS IN EXTERIOR WALLS SHALL BE GALVANIZED
5. PROVIDE LINTEL FROM THIS SCHEDULE FOR ALL LINTELS NOT SHOWN ON DRAWINGS FOR DOORS, WINDOWS, RECESSES, LOUVERS, DUCTS, ALL OPENINGS, ETC. THAT ARE NOT PART OF A LOAD BEARING MASONRY WALL.



REBAR, SEE TABLE

---

NOTES:  
1. PROVIDE STANDARD HOOK AT END OF EA HORIZONTAL REBAR

