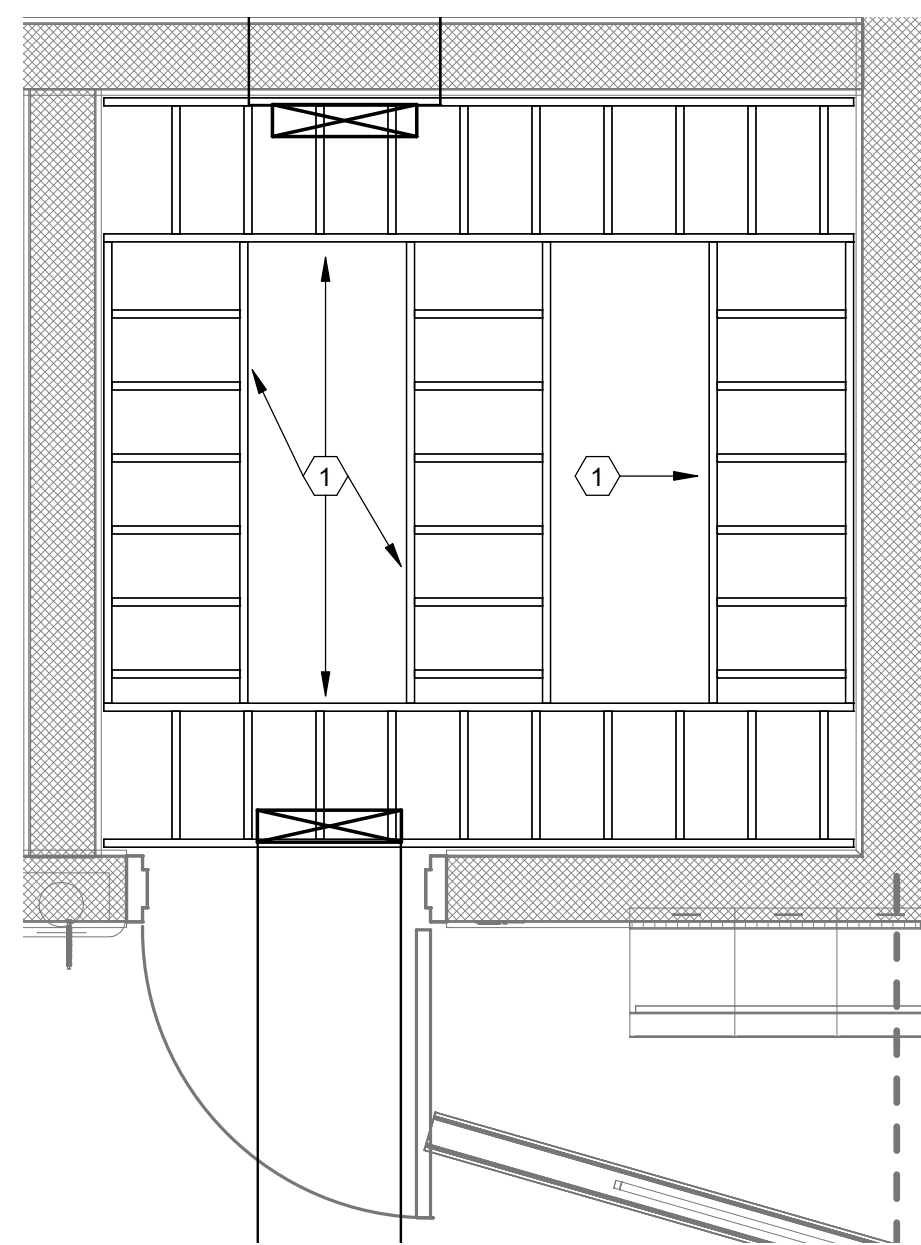
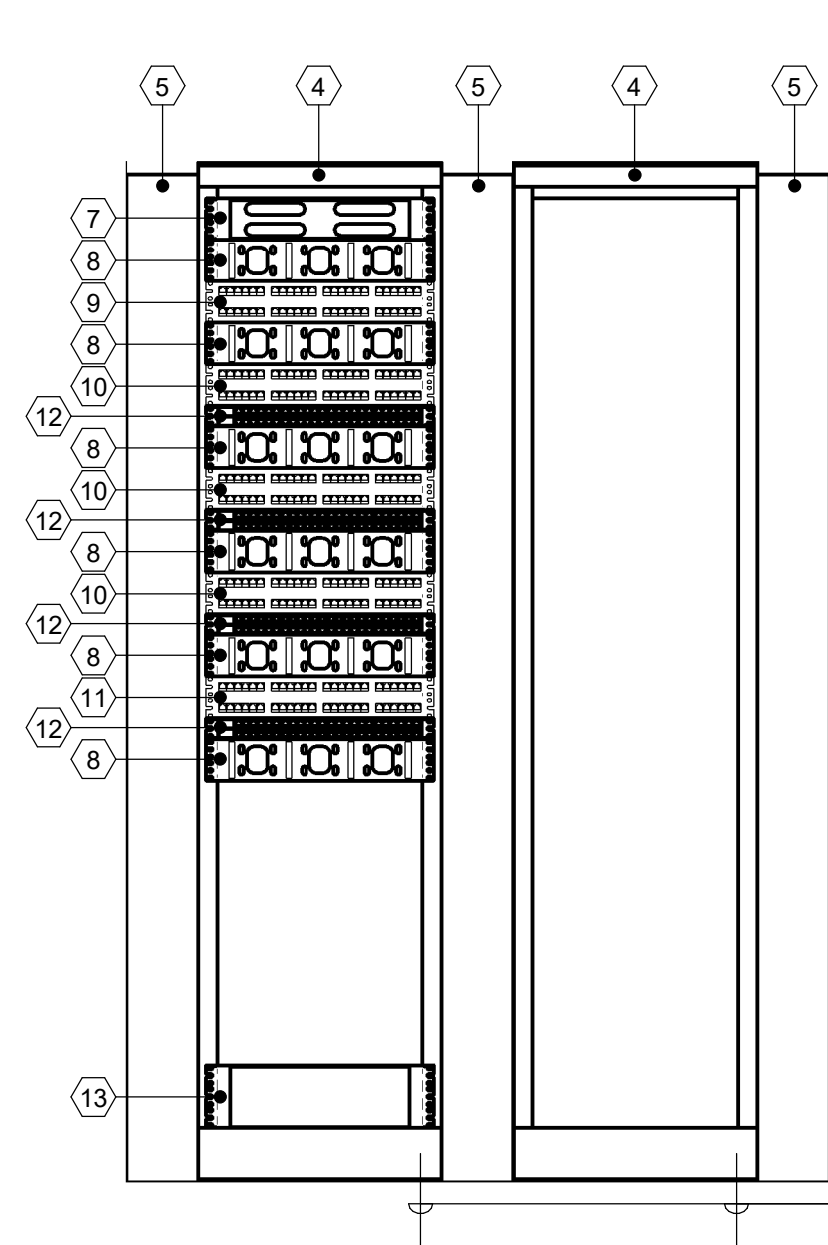


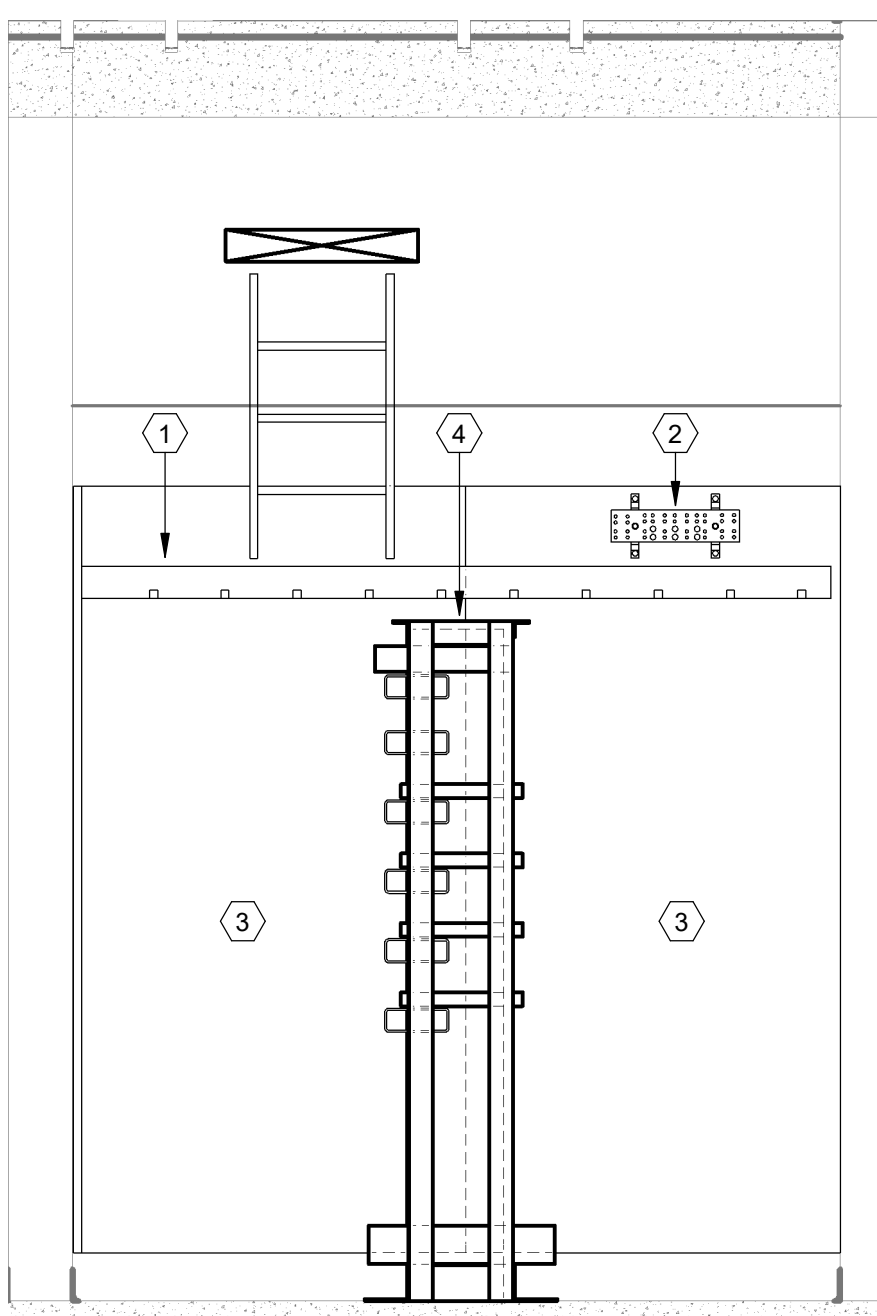
1 TR1-2 - ENLARGED EQUIPMENT PLAN
SCALE: 1/2" = 1'-0"



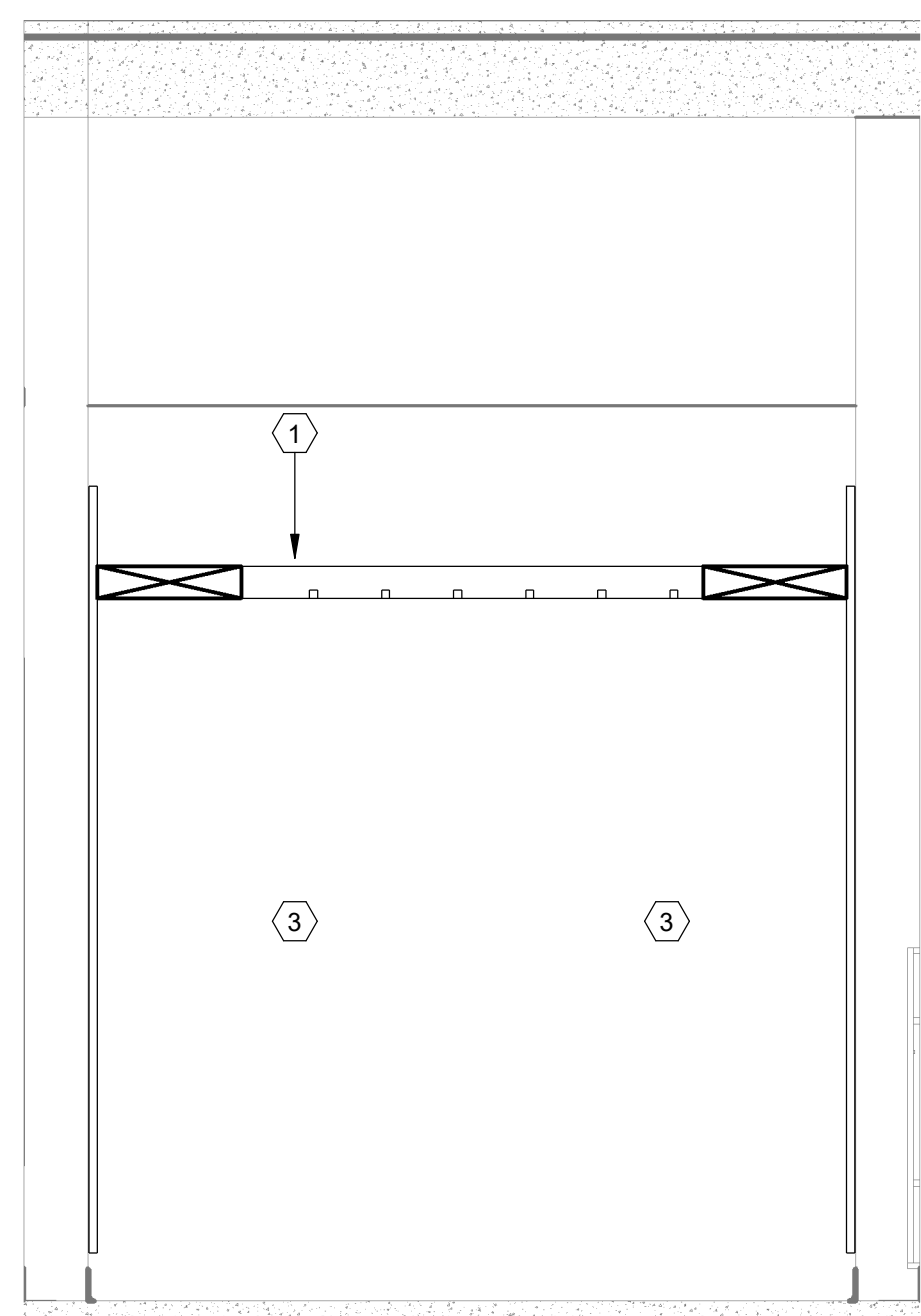
2 TR1-2 - ENLARGED PATHWAYS PLAN
SCALE: 1/2" = 1'-0"



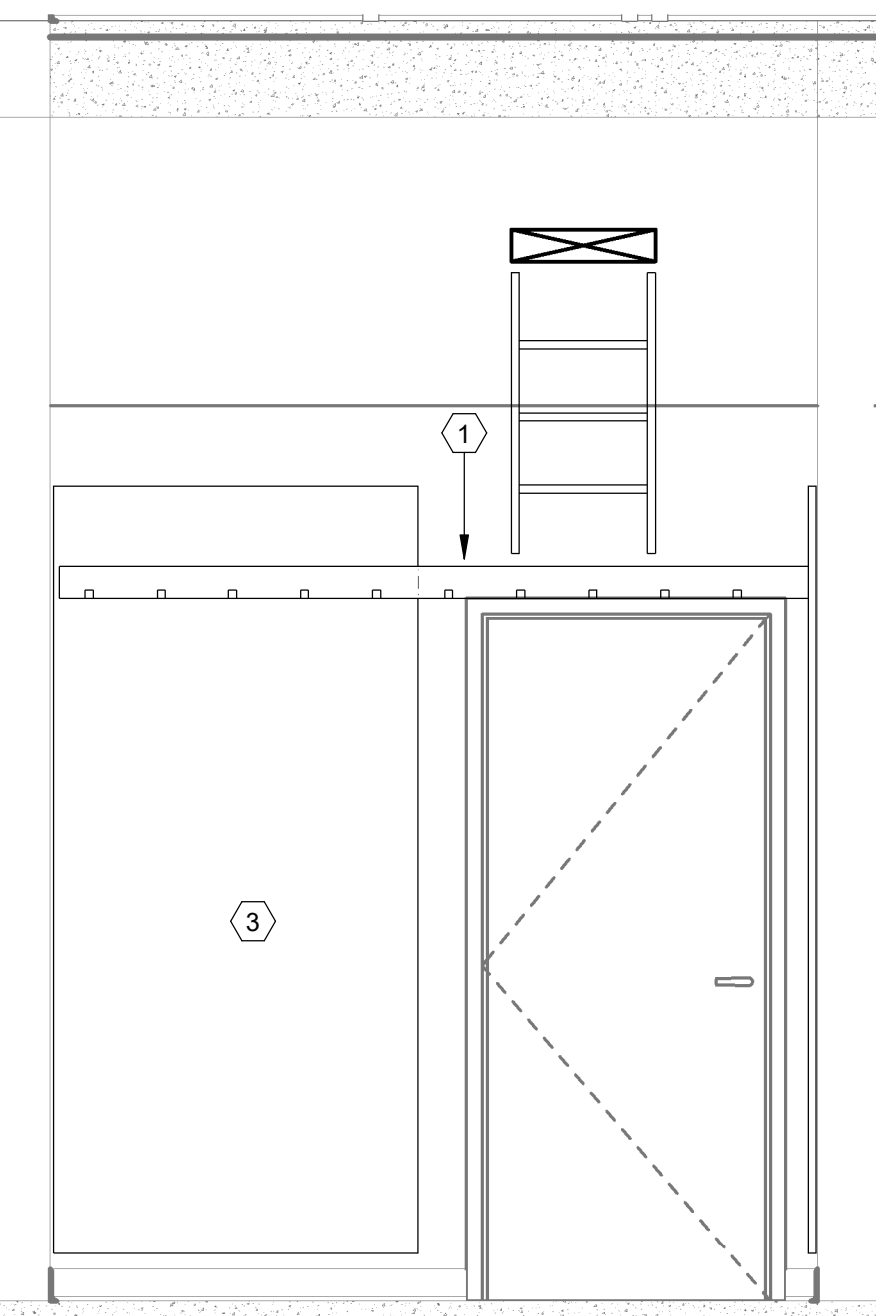
3 TR1-2 - ENLARGED RACK ELEVATION
SCALE: 3/4" = 1'-0"



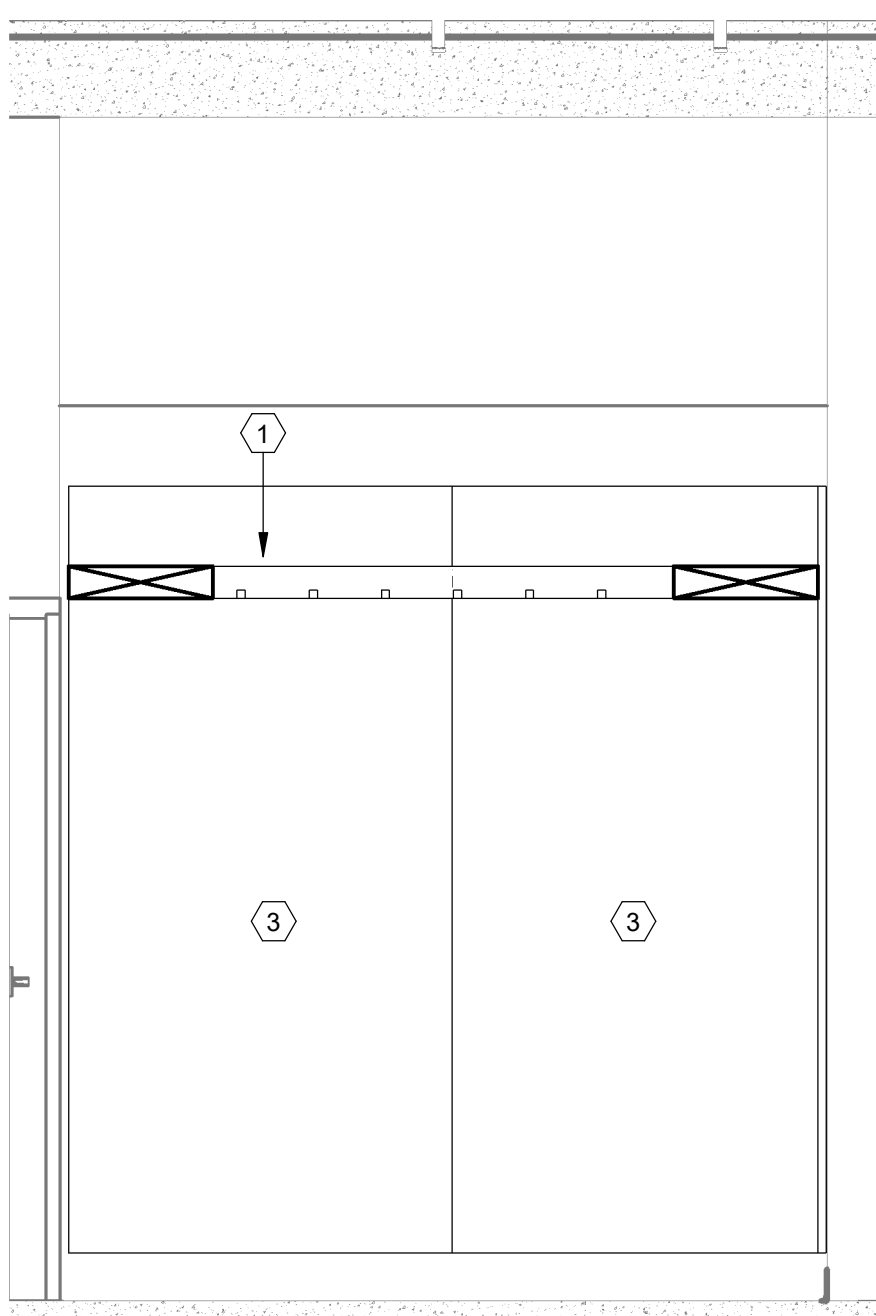
4 TR1-2 - ENLARGED NORTH ELEVATION
SCALE: 1/2" = 1'-0"



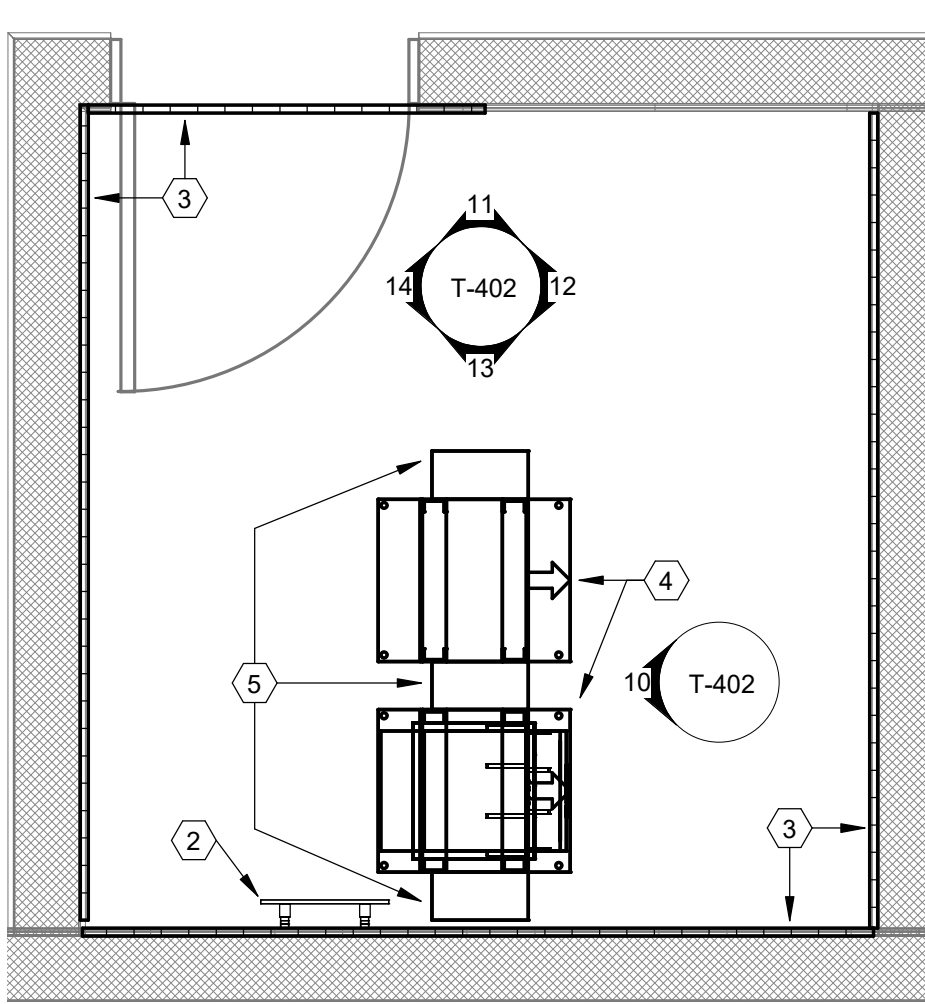
5 TR1-2 - ENLARGED EAST ELEVATION
SCALE: 1/2" = 1'-0"



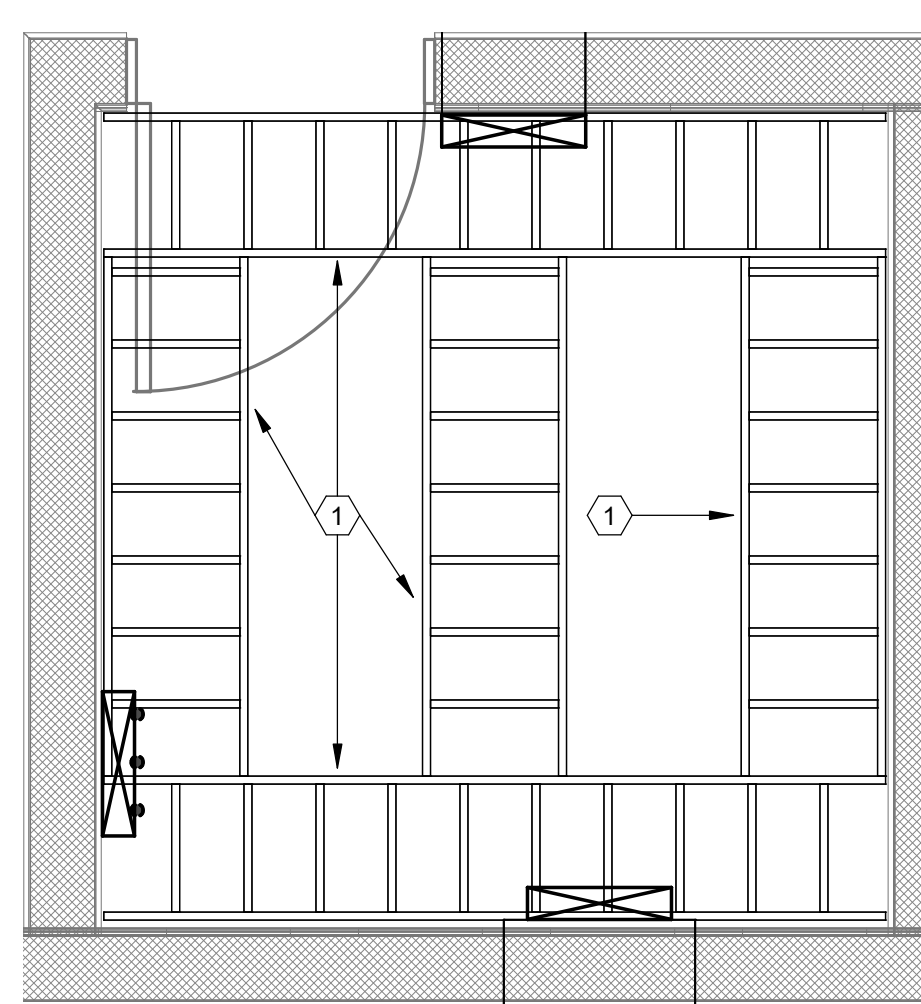
6 TR1-2 - ENLARGED SOUTH ELEVATION
SCALE: 1/2" = 1'-0"



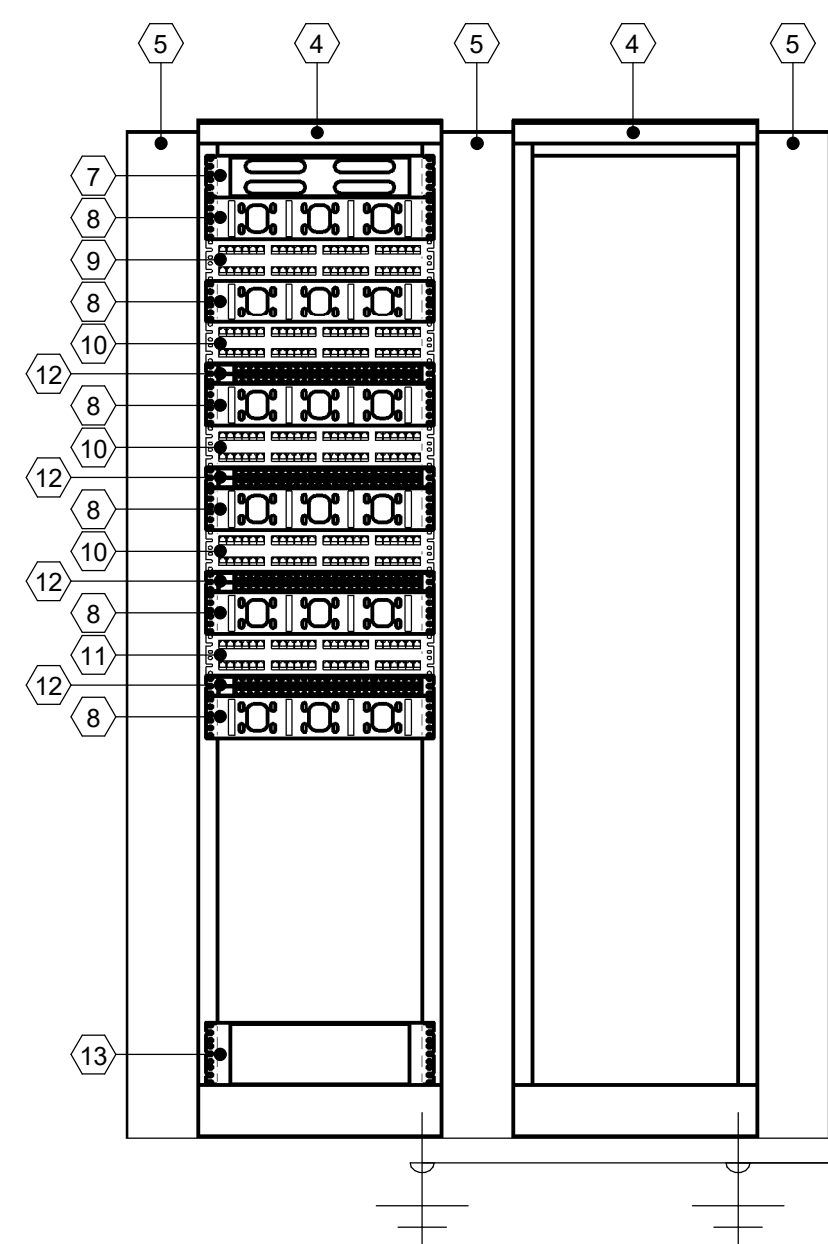
7 TR1-2 - ENLARGED WEST ELEVATION
SCALE: 1/2" = 1'-0"



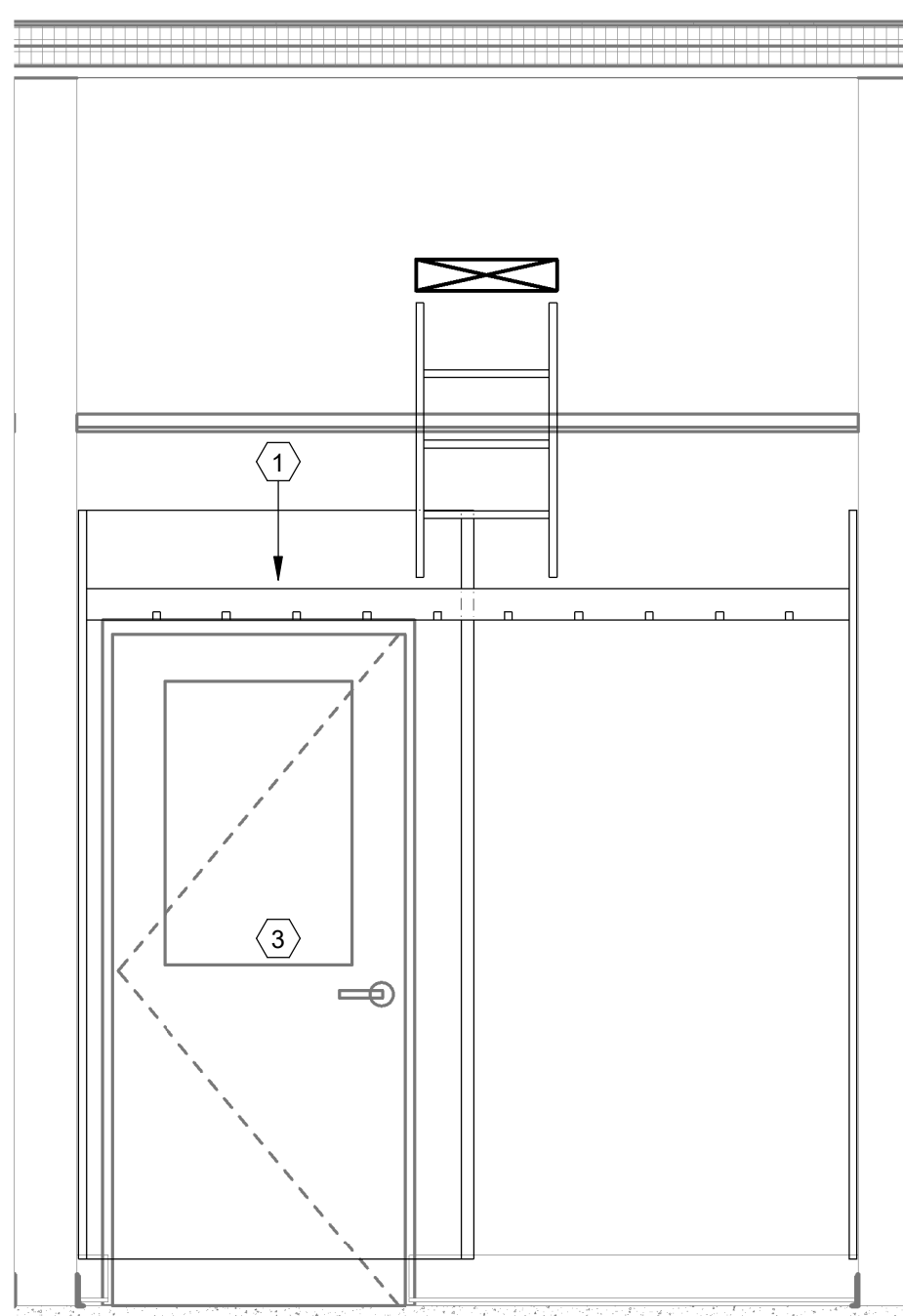
8 TR1-3 - ENLARGED EQUIPMENT PLAN
SCALE: 1/2" = 1'-0"



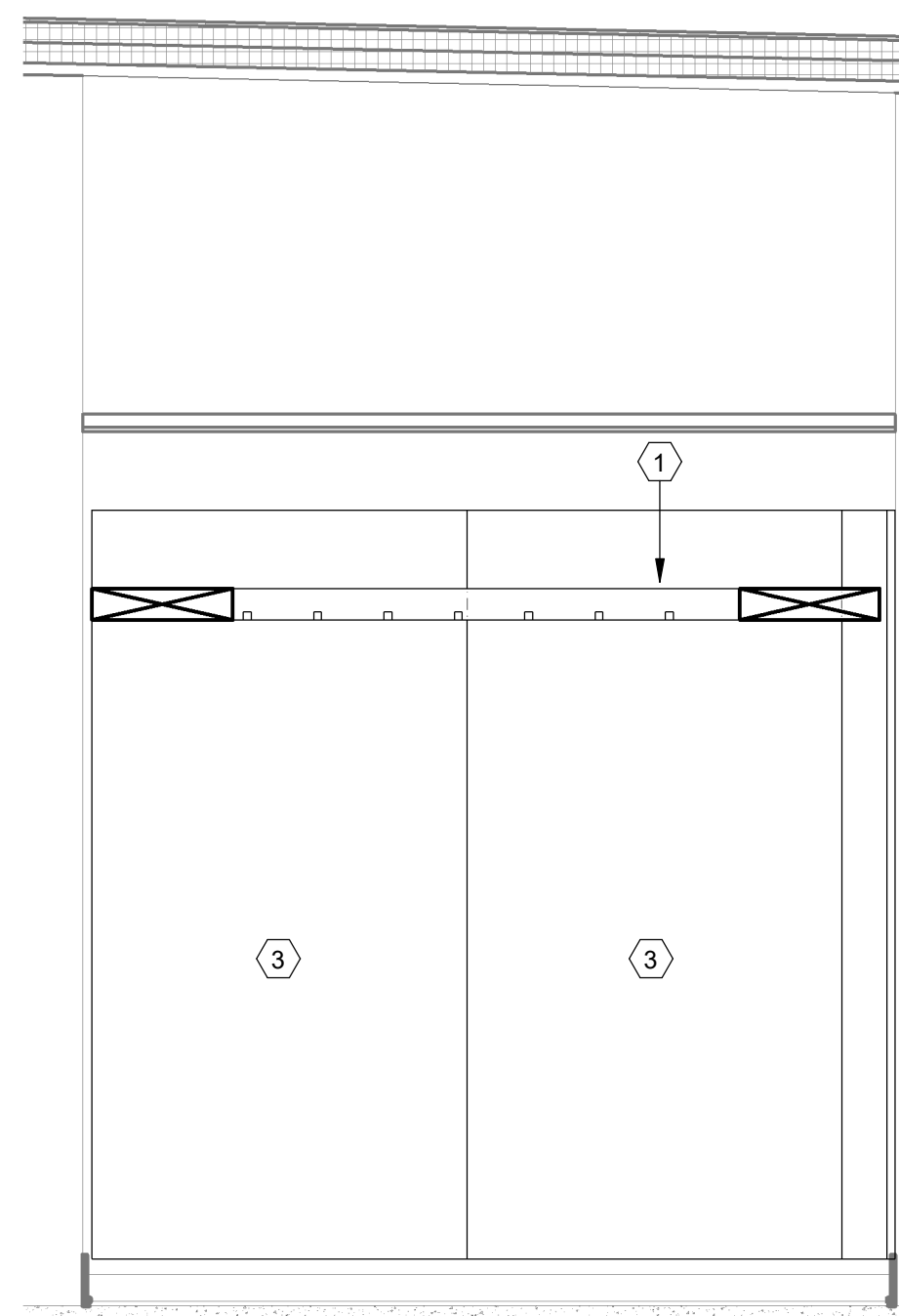
9 TR1-3 - ENLARGED PATHWAYS PLAN
SCALE: 1/2" = 1'-0"



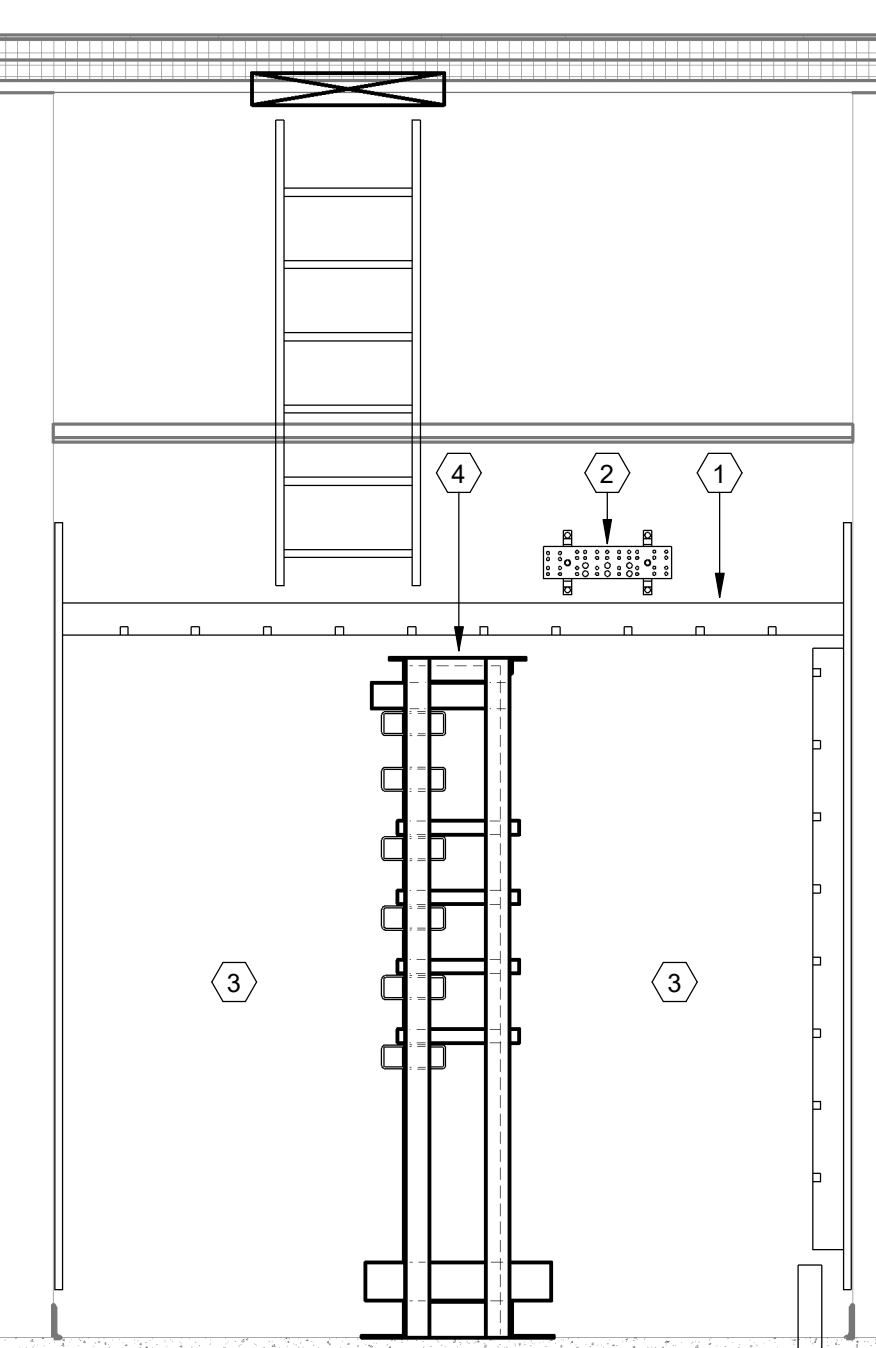
10 TR1-3 - ENLARGED RACK ELEVATION
SCALE: 3/4" = 1'-0"



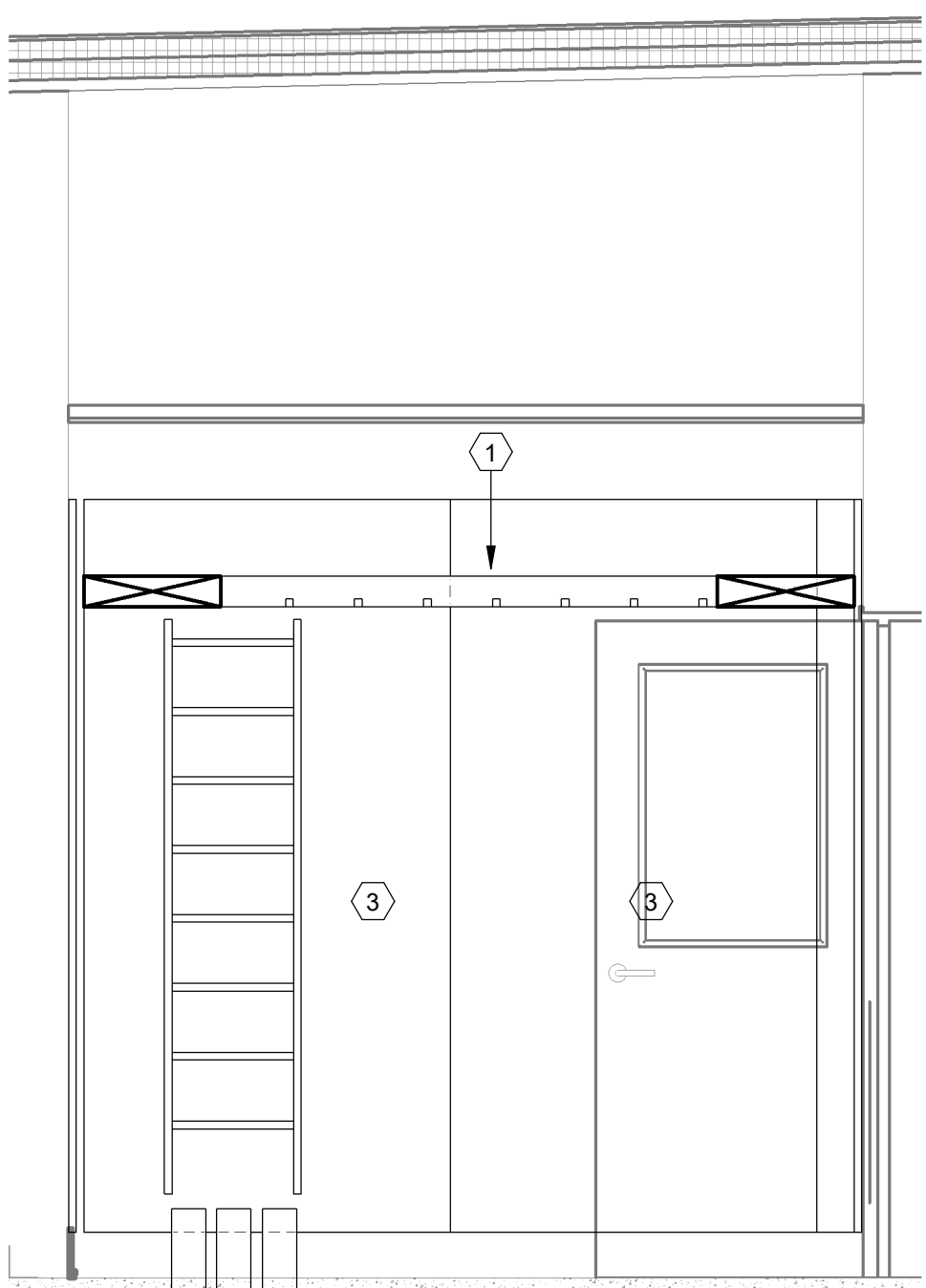
11 TR1-3 - ENLARGED NORTH ELEVATION
SCALE: 1/2" = 1'-0"



12 TR1-3 - ENLARGED EAST ELEVATION
SCALE: 1/2" = 1'-0"



13 TR1-3 - ENLARGED SOUTH ELEVATION
SCALE: 1/2" = 1'-0"



14 TR1-3 - ENLARGED WEST ELEVATION
SCALE: 1/2" = 1'-0"

CODED PLAN NOTES

1. PROVIDE 18" W CABLE RUNWAY.
2. PROVIDE TELECOMMUNICATIONS MAIN GROUNDING BUSBAR "TMGB".
3. PROVIDE 4' x 8' AC GRADE PLYWOOD BACKBOARD. MOUNT BOARDS 6" AFF WITH "X" SIDE FACING TOWARDS USER (TYPICAL).
4. PROVIDE 4-POST TECHNOLOGY DISTRIBUTION RACK.
5. PROVIDE 6" WIDE VERTICAL WIRE MANAGER ON BOTH ENDS OF LINE OF RACKS AND 10" WIDE VERTICAL WIRE MANAGERS BETWEEN EACH RACK.
6. BOND EACH RACK WITH A DEDICATED BONDING CONDUCTOR WITH A CABLE SIZED AT 2 KCMIL PER LINEAR FOOT OF CONDUCTOR TO TMGB. BONDING CONDUCTOR SHALL BE NO LESS THAN #6 AWG.
7. 2U FIBER LIU.
8. 2U HORIZONTAL WIRE MANAGER.
9. 2U 48-PORT PATCH PANEL FOR BACKBONE CABLING.
10. 2U 48-PORT PATCH PANEL FOR CAT 6 UTP CABLING.
11. 2U 48-PORT PATCH PANEL FOR CAT 6A UTP CABLING.
12. SPACE FOR OWNER-PROVIDED NETWORK SWITCH.
13. SPACE FOR OWNER-PROVIDED UPS.

PROJECT NO
2203-2

ARCHITECTURAL VISION GROUP, LTD
ARCHITECTS
23850 SPERRY DRIVE
CLEVELAND, OHIO 44145

MASSILLON CITY SCHOOL DISTRICT
MASSILLON EAST ELEMENTARY PK-3
1 PAULE BROWN DRIVE SE, MASSILLON, OHIO 44646
MASSILLON CITY SCHOOL DISTRICT MASSILLON, OHIO

| NO. | DATE | ISSUED FOR | DESCRIPTION |
|----------|---------------------|------------|-------------|
| 07/12/23 | 100% BID PERMIT SET | ISSUED FOR | |

PROJECT NO 2203-2
DRAWN BY DRK
CHECKED BY AMW
DATE 07/12/23

TECHNOLOGY
ENLARGED
PLANS AND
ELEVATIONS

SCALE: As Indicated
SHEET NO
T-402