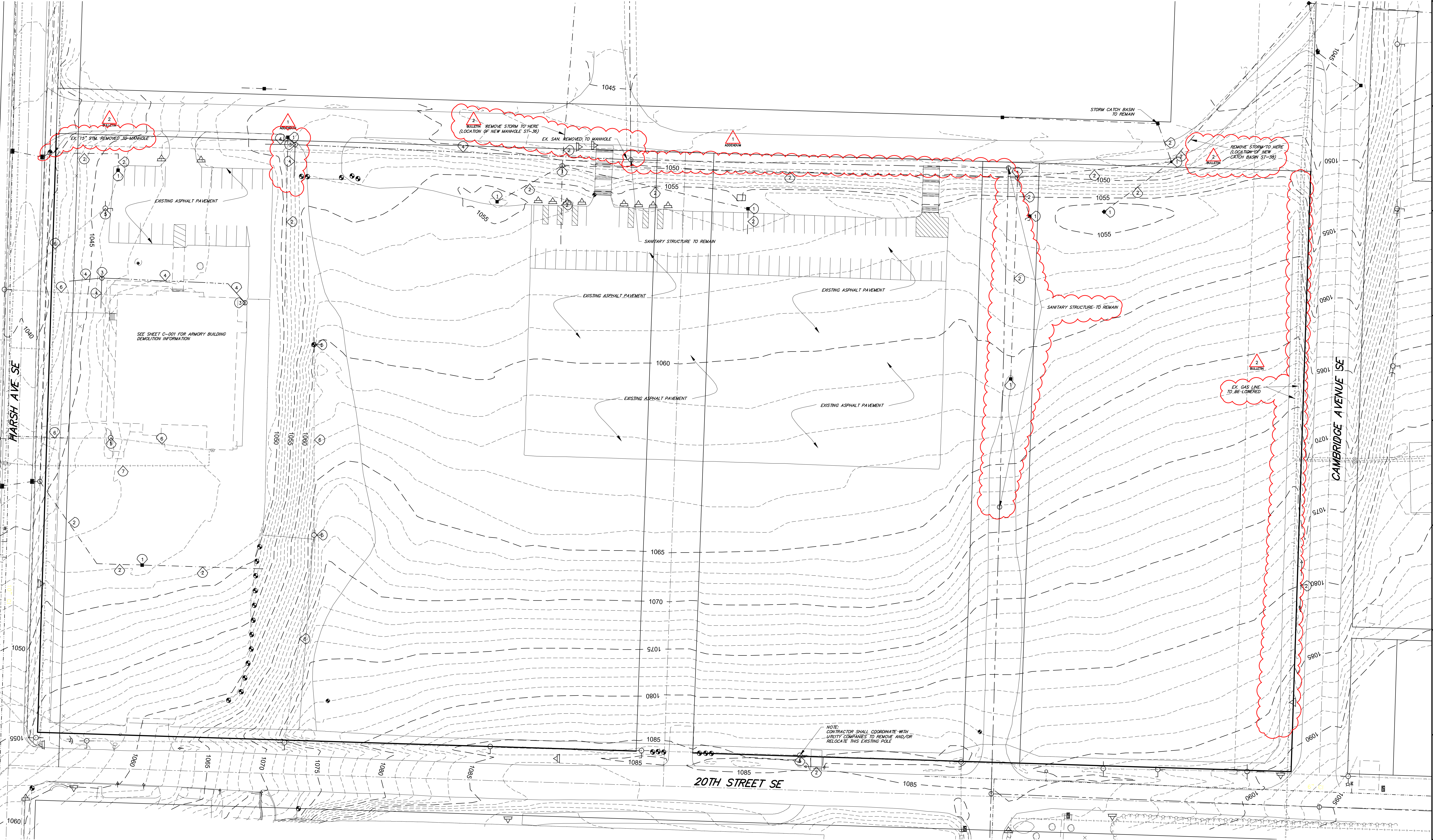


DEMOLITION NOTES

1. LIMITS OF DEMOLITION IS THE PROPERTY LINE LOCATED ON THE PLANS AS DIRECTED BY THE CONSTRUCTION MANAGER.
2. PRIOR TO STARTING DEMOLITION, THE CONTRACTOR SHALL SECURE ALL REQUIRED PERMITS AND APPROVALS.
3. IT IS THE RESPONSIBILITY OF THE CONTRACTOR TO COORDINATE ALL DEMOLITION ITEMS. SPECIAL ATTENTION NEEDS TO BE PAID TO PROPERTY DEVELOP AND EXECUTE A WASTE MANAGEMENT PLAN FOR BUILDING RELATED ITEMS. THE CONTRACTOR WILL BE EXPECTED TO PROVIDE TONNAGE QUANTITY INFORMATION IN A FORMAT AGREED UPON BY THE CONSTRUCTION MANAGER, AND PROVIDE THE LOCATION OF RECYCLING OR DISPOSAL.
4. DEMOLITION ACTIVITIES SHALL NOT BEGIN PRIOR TO INSTALLING THE STORM WATER POLLUTION PREVENTION CONTROL MEASURES, AS INDICATED ON THE STORM WATER POLLUTION PREVENTION PLAN.
5. THE CONTRACTOR SHALL CONTACT THE OHIO UTILITIES PROTECTION SERVICE (O.U.P.S.) AT (800)362-2764, AT LEAST 48 HOURS BUT NO MORE THAN 10 WORKING DAYS (EXCLUDING WEEKENDS AND LEGAL HOLIDAYS) BEFORE BEGINNING ANY EXCAVATION ACTIVITIES ON THE PROJECT.
6. THE CONTRACTOR SHALL COORDINATE WITH ALL UTILITY COMPANIES THE REMOVAL AND RELOCATION OF ALL UTILITIES AND SERVICE CONNECTIONS ABOVE AND BELOW GROUND. AT LEAST 72 HOURS NOTICE SHALL BE GIVEN PRIOR TO ANY OUTAGE OR DISRUPTION OF SERVICE.
7. ANY ADDITIONAL UTILITY CONNECTIONS DISCOVERED DURING DEMOLITION AND CONSTRUCTION SHALL BE EVALUATED IN THE FIELD AND MAINTAINED OR ABANDONED AS DIRECTED BY THE PROJECT ENGINEER.
8. THE CONTRACTOR SHALL COORDINATE RELOCATION OF ANY ELECTRIC SERVICE AND POLES WITH THE UTILITY COMPANY.
9. THE CONTRACTOR SHALL NOTIFY CONSTRUCTION MANAGER OF WORK WHICH MAY AFFECT ADJACENT OWNER'S PROPERTY, POTENTIAL NOISE, UTILITY OUTAGE, OR DISRUPTION OF SERVICES. THE CONTRACTOR SHALL COORDINATE WORK ACTIVITIES WITH OWNER.
10. THE CONTRACTOR SHALL CLEAR AND GRUB ALL EXISTING TREES, SHRUBS, AND UNDERBRUSH TO THE LIMITS DEFINED ON THE DEMOLITION DRAWINGS. ALL MATERIALS INCLUDING, BUT NOT LIMITED TO TRUNKS, BRANCHES, STUMPS, ROOT BALLS, AND CHIPS SHALL BE DISPOSED OFF-SITE AT AN APPROVED WASTE DISPOSAL AREA.
11. THE CONTRACTOR SHALL SAWCUT CONCRETE AND ASPHALT MATERIAL PRIOR TO DEMOLITION.
12. CONCRETE AND ASPHALT MATERIAL DESIGNATED FOR DEMOLITION SHALL BE DISPOSED OFF-SITE AT AN APPROVED WASTE DISPOSAL AREA.
13. ALL EXISTING SLAB ON GRADE STRUCTURES SHOULD BE COMPLETELY REMOVED, INCLUDING CONCRETE SLABS OR FLOOR SLABS AND FOUNDATIONS.
14. ALL EXISTING FOOTINGS AND FOUNDATION WALL AREAS SHOULD BE COMPLETELY REMOVED INCLUDING FOUNDATION DRAIN PIPES AS DIRECTED BY CONSTRUCTION MANAGER.
15. ALL RESULTING DEMOLITION DEBRIS SHALL BE REMOVED FROM THE SITE AND PROPERLY RECYCLED OR DISPOSED OF BY THE CONTRACTOR.
16. COMPLETELY FILL BELOW-GRADE AREAS AND Voids RESULTING FROM DEMOLITION OF STRUCTURES. SOIL COMPACTION AND SOIL MOISTURE CONTENT SHALL BE IN ACCORDANCE WITH THE PROJECT SUBSURFACE INVESTIGATION REPORT.
17. USE SATISFACTORY SOIL MATERIALS AS SPECIFIED AND APPROVED BY THE PROJECT GEOTECHNICAL ENGINEER.
18. AFTER PLACEMENT AND COMPACTION, GRADE SURFACE TO MEET ADJACENT CONTOURS AND TO PROVIDE FLOW TO SURFACE DRAINAGE STRUCTURES.
19. ON-SITE STOCKPILING OR SORTING OF DEMOLITION DEBRIS OR MATERIAL IS PERMITTED WITHIN THE DESIGNATED FENCED AREAS ONLY.
20. THE CONTRACTOR SHALL GRADE WORK SITE TO MAINTAIN POSITIVE DRAINAGE THROUGHOUT DEMOLITION OPERATION AND UTILIZE THE CONSTRUCTED EROSION CONTROL MEASURES.
21. THE CONTRACTOR SHALL PROVIDE, ERECT, AND MAINTAIN TEMPORARY BARRIERS AND SECURITY DEVICES THROUGHOUT THE DURATION OF THE PROJECT AS REQUIRED.
22. THE CONTRACTOR SHALL PREVENT MOVEMENT OR SETTLEMENT OF ADJACENT STRUCTURES AND PROVIDE BRACING AND SHORING AS REQUIRED.
23. THE CONTRACTOR SHALL PROTECT EXISTING SITE FEATURES WHICH ARE DENOTED AS (TO REMAIN).
24. THE CONTRACTOR SHALL DEMOLISH STRUCTURES INDICATED IN AN ORDERLY AND CAREFUL MANNER.
25. THE CONTRACTOR SHALL LEAVE AREAS OF WORK IN A CLEAN CONDITION.
26. THE CONTRACTOR SHALL INSTALL TEMPORARY FENCING AROUND EQUIPMENT AND WORK AREAS TO PROTECT THE PUBLIC FROM CONSTRUCTION ACTIVITIES, MATERIALS AND EQUIPMENT.

DEMOLITION KEY PLAN

- 1 REMOVE EXISTING STORM STRUCTURE
- 2 REMOVE EXISTING STORM SEWER
- 3 REMOVE EXISTING SANITARY STRUCTURE
- 4 REMOVE EXISTING SANITARY SEWER
- 5 REMOVE EXISTING UTILITY POLE
- 6 REMOVE EXISTING OVERHEAD UTILITY LINES
- 7 REMOVE EXISTING GAS LINE AND/OR SERVICE



— PLAN PREPARED BY —
LEWIS LAND PROFESSIONALS, INC.

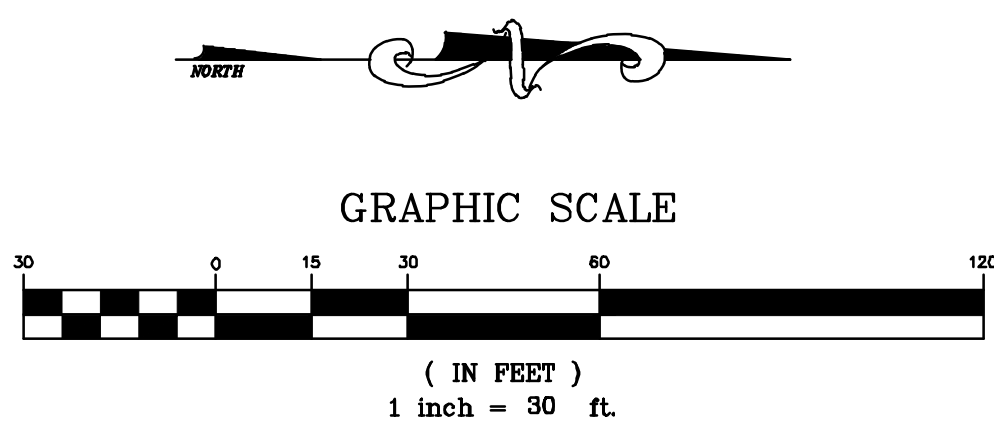
LEWIS LAND PROFESSIONALS
CIVIL ENGINEERING LAND SURVEYING
8691 WADSWORTH ROAD SUITE 100
WADSWORTH, OH 44281 (330) 335-8232



NOTE: CONTRACTOR SHALL REFER TO ALL OTHER PLAN SHEETS AND SPECIFICATIONS FOR THIS PROJECT TO DETERMINE THE EXTENT OF DEMOLITION WORK NECESSARY.

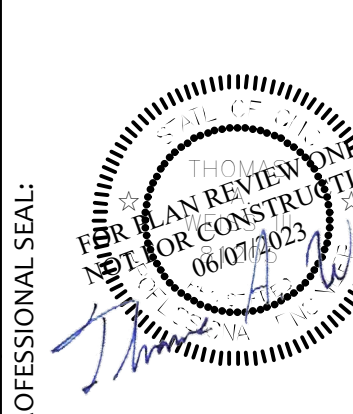
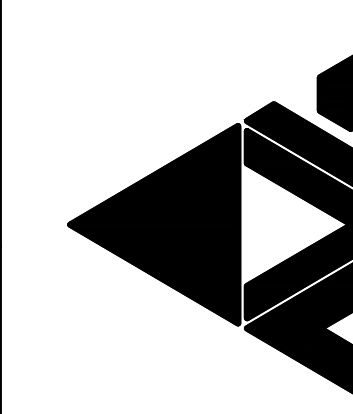
NOTE: DEMOLITION AND REMOVAL OF UTILITIES THAT SERVICE BUILDINGS SHALL BE COORDINATED WITH THE INSTALLATION OF THE NEW UTILITIES IN WHICH TEMPORARY SERVICE CONNECTIONS MUST BE MADE TO MAINTAIN ACTIVE SERVICE WITH MINIMAL INTERRUPTION OF SERVICE TO THE BUILDINGS.

NOTE: SEE DEMOLITION PLAN BY BEHNKE LANDSCAPE ARCHITECTS FOR ALL PAVEMENT, LANDSCAPING, FENCING AND OTHER SURFACE FEATURE DEMOLITION.



PROJECT NO
2203-2

ARCHITECTURAL VISION GROUP, LTD
ARCHITECTS • PLANNERS
23850 SPERRY DRIVE CLEVELAND, OHIO 44145



CONSULTANT
LEWIS LAND PROFESSIONALS
Civil Engineering & Land Surveying
8691 WADSWORTH ROAD
WADSWORTH, OH 44281
PH (330) 335-8232
FX (330) 335-0242
WWW.LEWISLANDPROF.COM

Massillon East Site PK-3
Eastside PK-3 Elementary School
1 Paul E Brown Drive SE
MASSILLON CITY SCHOOL DISTRICT MASSILLON, OHIO

REVISION	DATE	DESCRIPTION
1	06/13/23	BULLETIN 2
2	06/20/23	BULLETIN 1
3	06/24/23	ADDENDUM 1
4	03/17/23	PLAN REVIEW & EIP
5	03/17/23	ISSUED TO OWNER SITE PACKAGE

PROJECT NO 2203-2
DRAWN BY
CHECKED BY
DATE 03/17/2023

UTILITY
DEMOLITION PLAN

SCALE: 1"=40'
SHEET NO
C-100