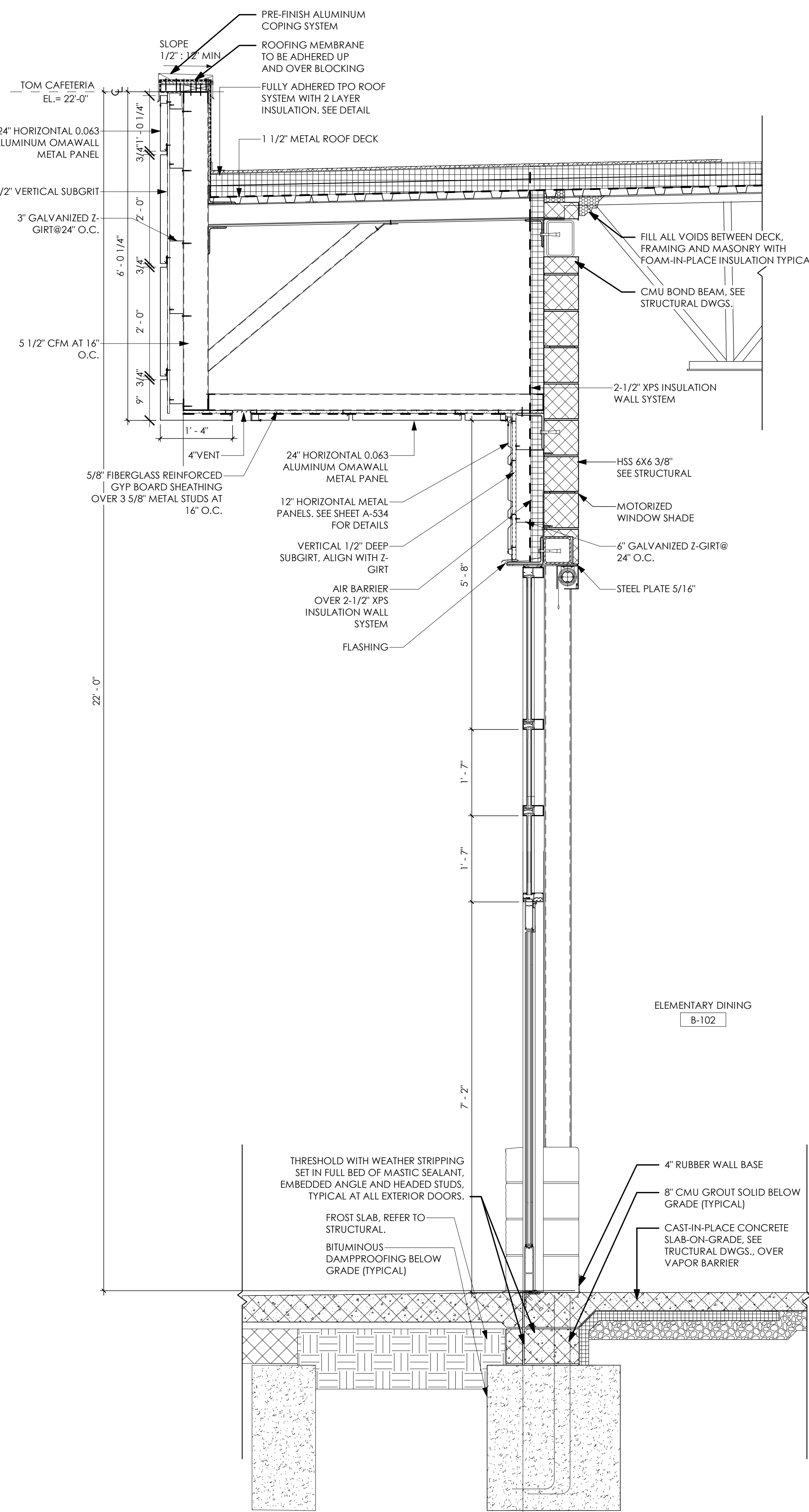


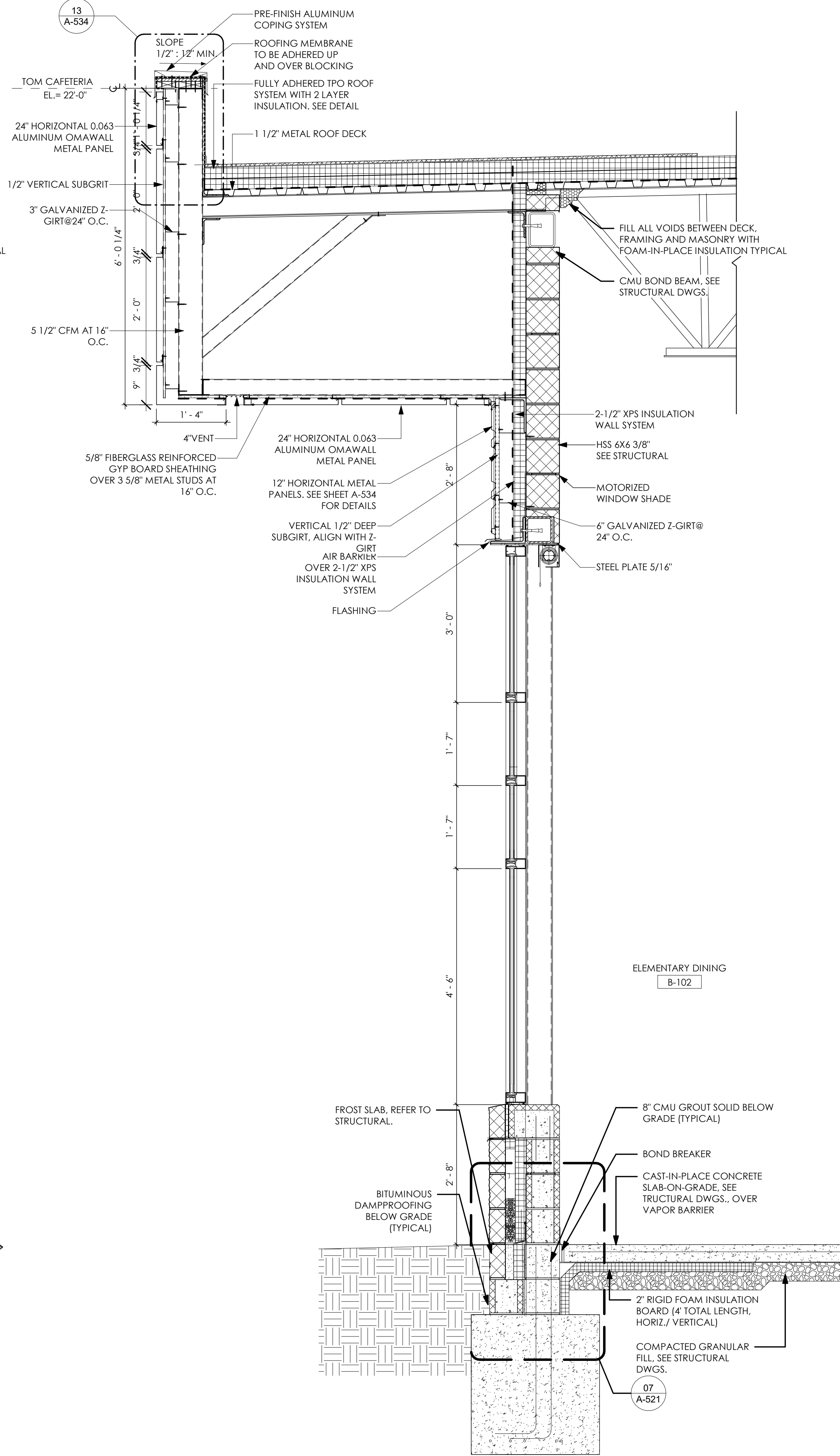
- TYPICAL PLAN NOTES
1. ALL PENETRATIONS THROUGH WALL CAVITY INSULATION WALL SYSTEM TO BE SEALED PER MANUFACTURER'S RECOMMENDED DETAILS FOR PENETRATIONS IN THE SYSTEM.
  2. SEE ROOFING DETAILS ON SHEET A-351 THRU A-353.
  3. SEE TYPICAL METAL PANEL DETAILS ON SHEET A-534 AND A-535.
  4. SEE MASONRY DETAILS ON SHEET A-521.
  5. ALL UNTELS REQUIRE AND DAM FLASHING. SEE DETAIL ON SHEET A-521 AND A-522. SEE 08/A-535 FOR END DAMS DETAIL FOR METAL PANEL SYSTEM.
  6. REFER TO SHEETS A-401 THRU A-404 FOR ALUMINUM FRAME OPENING ENLARGED DETAILS.
  7. ALL EXPOSED STRUCTURAL STEEL (I.E. COLUMNS, BEAMS, ANGLES, ETC.) TO BE ARCHITECTURAL GRADE FINISH STEEL.

\*REFER TO SHEET A-205 & A-206 FOR METAL PANEL PROFILE LEGEND AND METAL PANEL COLORS.



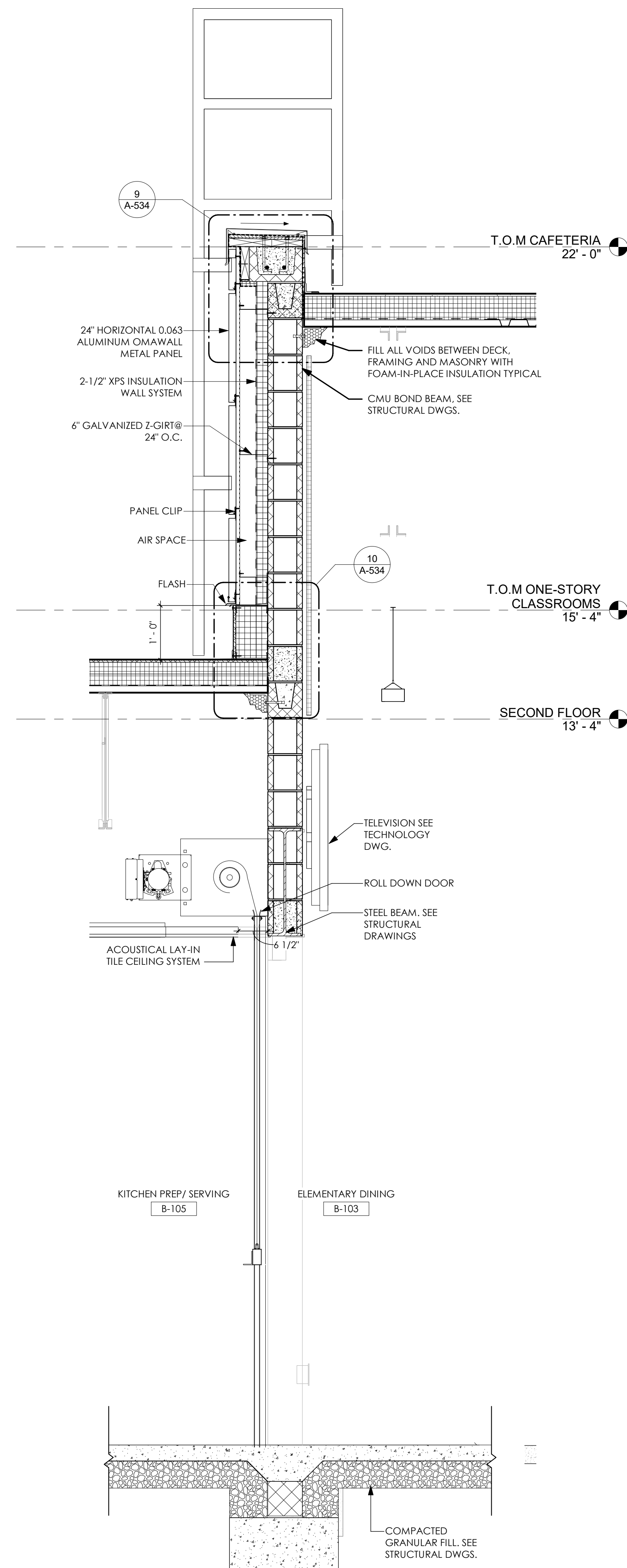
NOTE:  
BRICK / SPLIT-FACE CMU AND METAL PANEL COLOR MAY VARY. SEE EXTERIOR ELEVATIONS A-202 THRU A-204 FOR ADDITIONAL INFORMATION.

9 WALL SECTION  
SCALE: 3/4" = 1'-0"

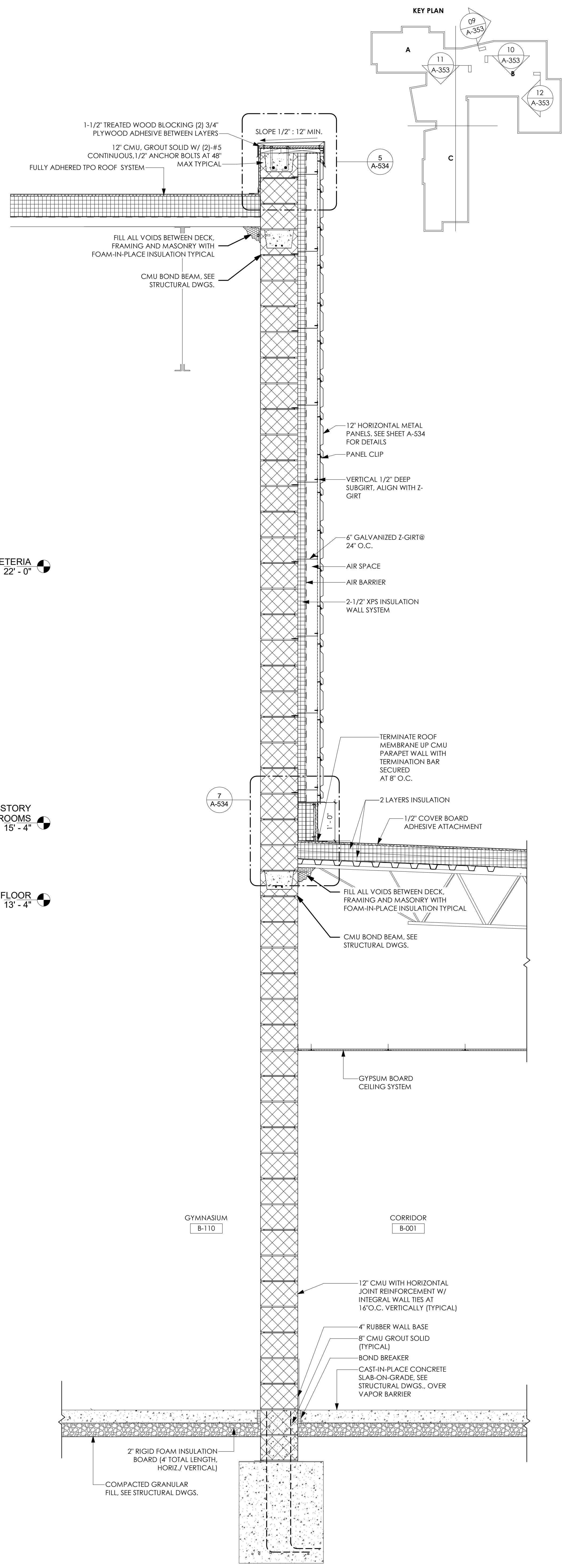


NOTE:  
BRICK / SPLIT-FACE CMU AND METAL PANEL COLOR MAY VARY. SEE EXTERIOR ELEVATIONS A-202 THRU A-204 FOR ADDITIONAL INFORMATION.

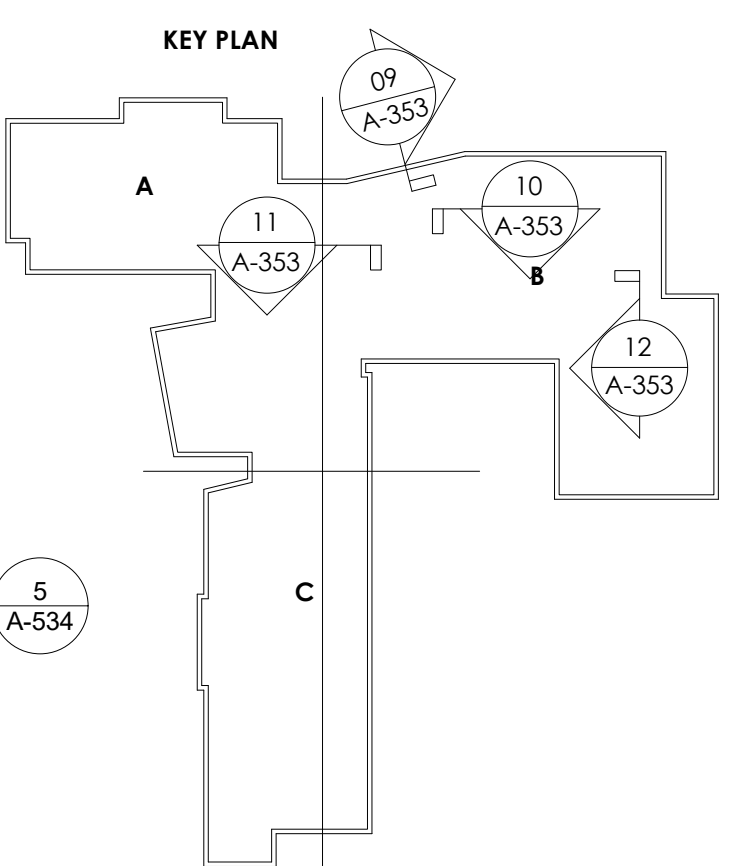
10 WALL SECTION  
SCALE: 3/4" = 1'-0"



11 WALL SECTION  
SCALE: 3/4" = 1'-0"



12 WALL SECTION  
SCALE: 3/4" = 1'-0"



PROJECT NO  
2203-1

ARCHITECTURAL VISION GROUP, LTD  
PLANNERS  
ARCHITECTS  
23850 SPERRY DRIVE  
CLEVELAND, OHIO 44145

MASSILLON CITY SCHOOL  
MASSILLON WEST ELEMENTARY  
PK-3  
250 29TH STREET NW, MASSILLON, OHIO 44646  
MASSILLON CITY SCHOOL DISTRICT MASSILLON, OHIO

PROFESSIONAL SEAL  
STATE OF OHIO  
SEAL NO.  
10376  
EXPIRATION DATE 12/31/2023

CONSULTANT:

NO.	DATE	DESCRIPTION
1	7/23/23	100% S&P PERMIT SET
2		ISSUED FOR AS

PROJECT NO 2203-1  
DRAWN BY  
CHECKED BY  
DATE

WALL SECTIONS

SCALE: As Indicated  
SHEET NO  
A-353