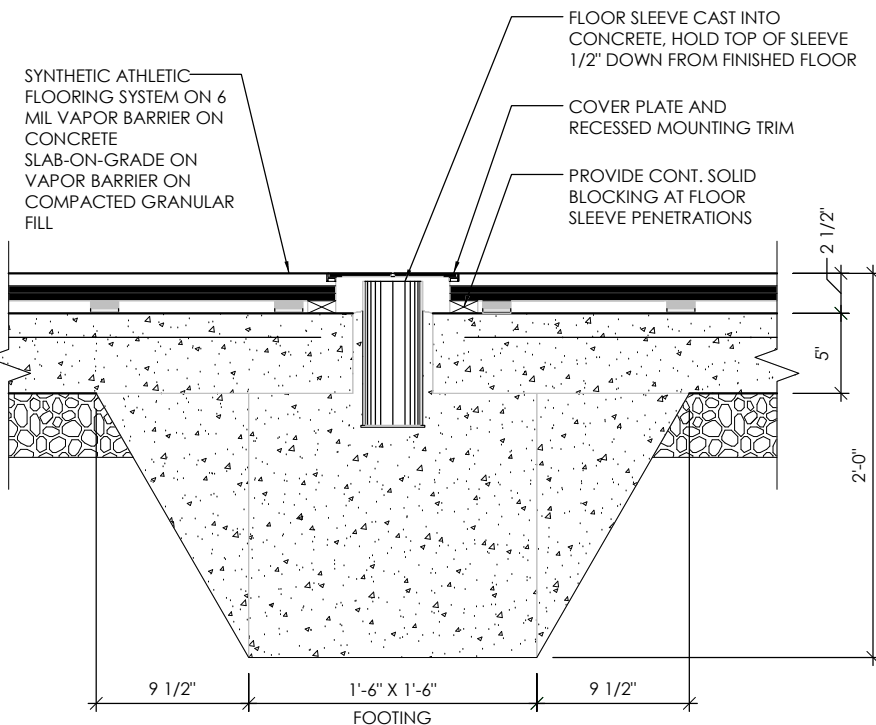


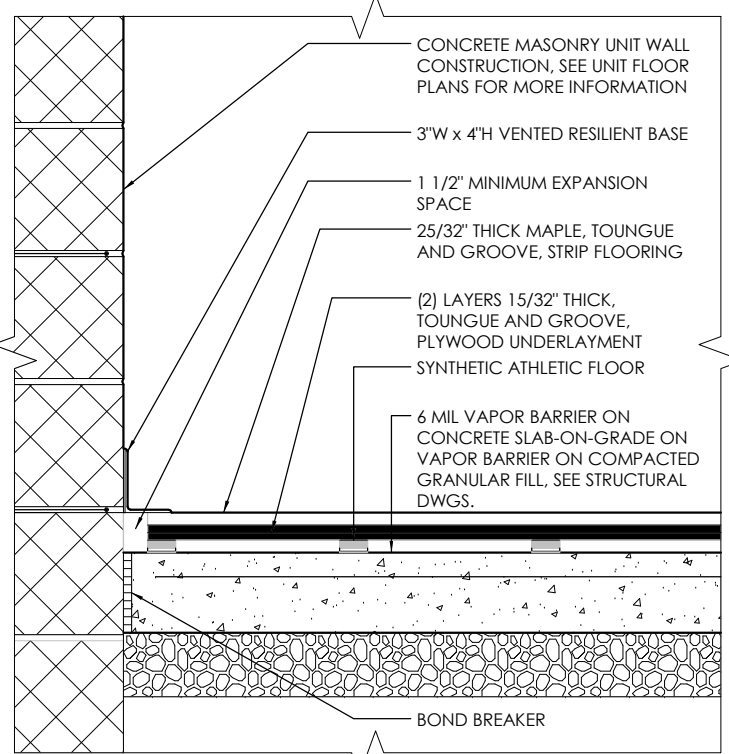
1 ENLARGED GYMNASIUM DETAIL PLAN
1/4" = 1'-0"

GYMNASIUM EQUIPMENT SCHEDULE	
G1	SAFETY WALL PADDING (12'-0"W x 6'-2"H), COLOR TO BE CHOSEN BY ARCHITECT FROM MANUFACTURER'S FULL RANGE OF COLORS.
G2	SAFETY WALL PADDING (12'-0"W x 6'-2"H), COLOR TO BE CHOSEN BY ARCHITECT FROM MANUFACTURER'S FULL RANGE OF COLORS.
G3	VOLLEYBALL SLEEVES, SEE DETAIL 01/A-506 OR 02/A-506
G4	CEILING SUSPENDED, FRONT-FOLD, REAR BRACED BASKETBALL BACKSTOPS WITH GLASS BACKBOARD AND GOAL HEIGHT ADJUSTMENT
G5	WALL-MOUNTED, FRONT-FOLD BASKETBALL BACKSTOPS WITH FIBERGLASS BACKBOARD AND GOAL HEIGHT ADJUSTMENT
G6	WALL-MOUNTED BASKETBALL BACKSTOPS WITH FIBERGLASS BACKBOARD AND GOAL HEIGHT ADJUSTMENT
G9	SCOREBOARD, SEE SPECIFICATIONS, COLOR TO BE CHOSEN BY ARCHITECT FROM MANUFACTURER'S FULL RANGE OF COLORS.

ELEMENTARY COURT MARKING KEYED NOTES	
1	MAIN BASKETBALL BORDER
2	MAIN BASKETBALL COURT MARKING 2" WIDE
3	MAIN BASKETBALL 1/2 COURT LINE 2" WIDE
4	MAIN VOLLEYBALL COURT MARKING 2" WIDE
5	MAIN VOLLEYBALL SERVING AREA 2" WIDE X 6' LONG
6	MAIN VOLLEYBALL ATTACK LINES 2" WIDE
7	MAIN VOLLEYBALL COURT LINE 1" WIDE X 6' LONG
8	COACHING BOX COURT MARKING 2" WIDE X 1'-6" LONG
9	CROSS COURT BASKETBALL COURT MARKINGS TO BE 1" WIDE X 12' LONG WITH 12" SPACE BETWEEN
10	HOP SCOTCH MARKING
11	FOUR- SQUARE COURT MARKING
GENERAL NOTES:	
1. COURT MARKINGS ARE BASE BID.	
2. COLOR OF COURT MARKINGS TO BE REVIEWED AND APPROVED BY ARCHITECT	
3. ALL OTHER COLOR DECISIONS BY ARCHITECT, ALL COLORS TO BE CHOSEN BY ARCHITECT FROM MANUFACTURER'S FULL RANGE OF COLOR	
4. COURT MARKINGS TO BE PAINTED.	
5. COURT MARKINGS SUBJECT TO CHANGE AT TIME OF SHOP DRAWINGS.	



GYMNASIUM FLOOR SLEEVE DETAIL - SYNTHETIC ATHLETIC FLOORING
SCALE: 1/2" = 1'-0"



BASE DETAIL - SYNTHETIC ATHLETIC FLOORING
SCALE: 1/2" = 1'-0"

PROJECT NO
2203-1

ARCHITECTURAL VISION GROUP, LTD
PLANNERS
ARCHITECTS
23850 SPERRY DRIVE
CLEVELAND, OHIO 44145

PROFESSIONAL SEAL
STATE OF OHIO
SYDNEY S. BROWN
10376
EXPIRATION DATE 12/31/2023

CONSULTANT:

MASSILLON CITY SCHOOL
MASSILLON WEST ELEMENTARY
PK-3
250 29TH STREET NW, MASSILLON, OHIO 44646
MASSILLON CITY SCHOOL DISTRICT
MASSILLON, OHIO

PROJECT NO	2203-1
DRAWN BY	
CHECKED BY	
DATE	

7/23/23	100% SUBMIT SET
DATE	DESCRIPTION
ISSUED AS:	

ENLARGED GYMNASIUM PLAN AND DETAILS

SCALE: As Indicated

SHEET NO
A-506