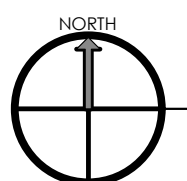
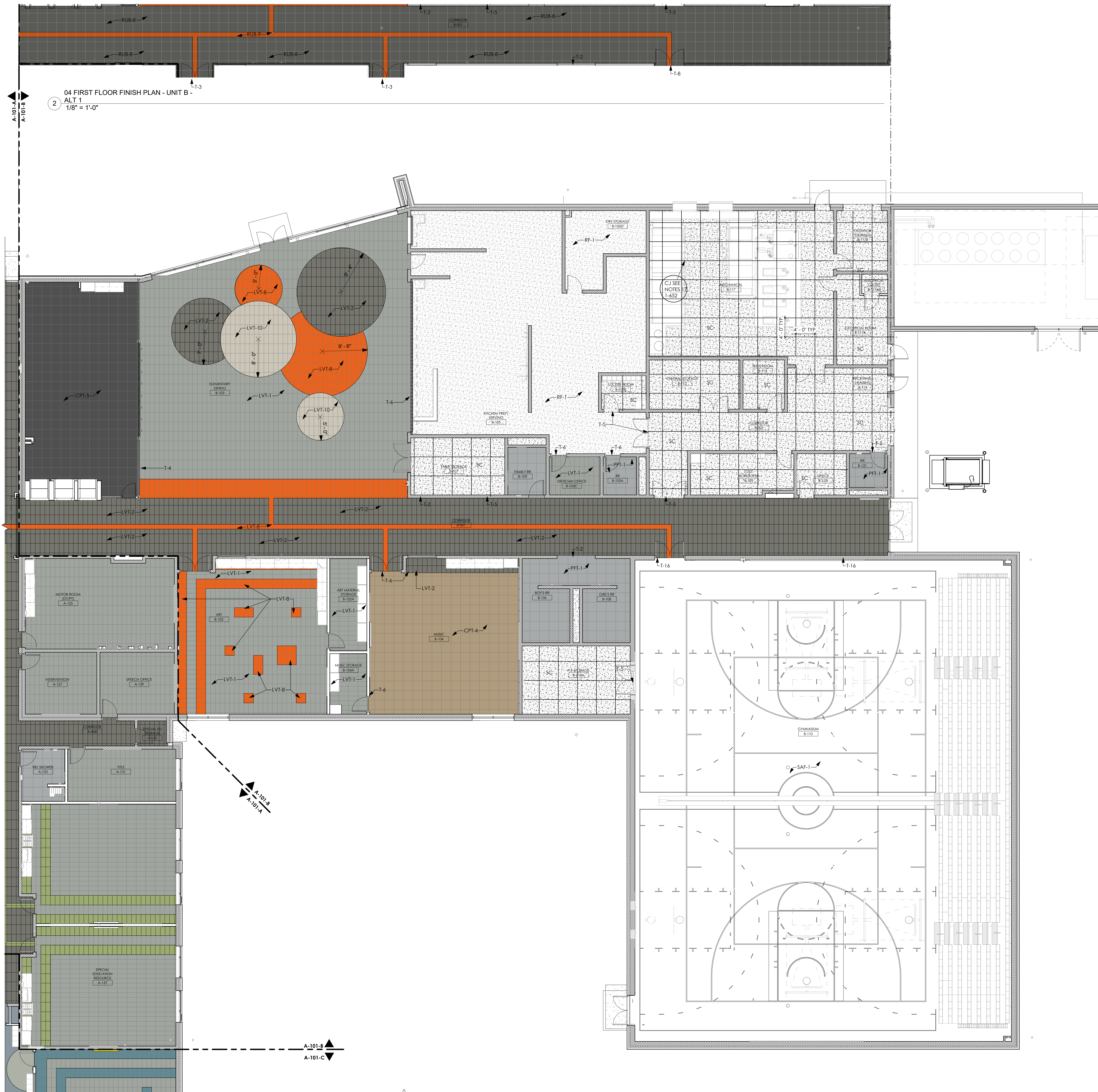


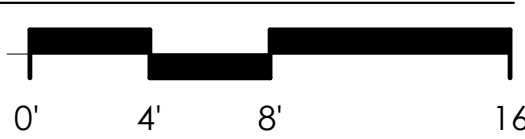
FLOORING LEGEND ALT 1

RUB-1	RUBBER TILE
RUB-2	RUBBER TILE
RUB-3	RUBBER TILE
RUB-4	RUBBER TILE
RUB-5	RUBBER TILE
RUB-6	RUBBER TILE
RUB-7	RUBBER TILE
RUB-8	RUBBER TILE
RUB-9	RUBBER TILE
RUB-10	RUBBER TILE



FIRST FINISH FLOOR PLAN - UNIT B

SCALE: 1/8" = 1'-0"

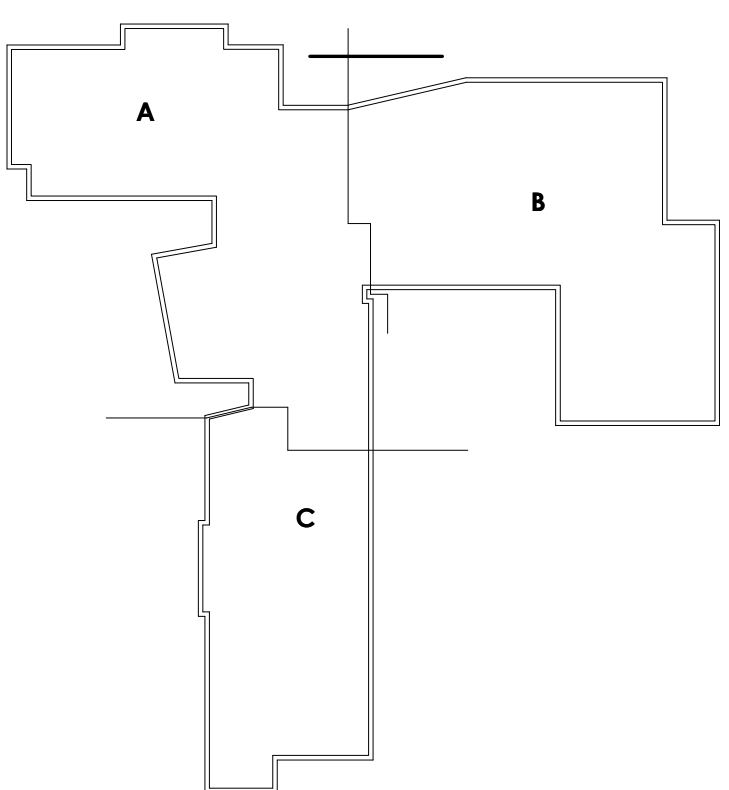


FLOORING LEGEND

LVT-1	LUXURY VINYL TILE
LVT-2	LUXURY VINYL TILE
LVT-3	LUXURY VINYL TILE
LVT-4	LUXURY VINYL TILE
LVT-5	LUXURY VINYL TILE
LVT-6	LUXURY VINYL TILE
LVT-7	LUXURY VINYL TILE
LVT-8	LUXURY VINYL TILE
LVT-9	LUXURY VINYL TILE
LVT-10	LUXURY VINYL TILE
CPT-1	CARPET TILE
CPT-2	CARPET TILE
CPT-3	CARPET TILE
CPT-4	CARPET TILE
CPT-5	CARPET TILE
CPT-6	CARPET TILE
LIN-1	LINOLEUM
LIN-2	LINOLEUM
LIN-3	LINOLEUM
LIN-4	LINOLEUM
LIN-5	LINOLEUM
LIN-6	LINOLEUM
LIN-7	LINOLEUM
LIN-8	LINOLEUM
PFT-1	PORCELAIN FLOOR TILE
CG	STAINLESS STEEL CORNER GUARD

- GENERAL FINISH NOTES
1. ALL LVT MUST BE PROVIDED BY SAME MANUFACTURER TO KEEP A CONSISTENT MATERIAL PATTERN.
 2. ALL LINOLEUM MUST BE PROVIDED BY SAME MANUFACTURER TO KEEP A CONSISTENT MATERIAL PATTERN.
 3. SEE INTERIOR ELEVATIONS FOR ACCENT WALL LOCATIONS.
 4. SEE RESTROOM PLANS AND ELEVATIONS FOR WALL TILE PATTERN.
 5. SEE FINISH PLAN FOR FLOOR PATTERNS AND TRANSITION LOCATIONS.
 6. ALL EXPOSED SIDES OF WALL TILE TO BE FINISHED WITH T-1 TRIM. SEE A-652.
 7. ALL PRODUCTS SHOWN ON MATERIAL SCHEDULE ARE SHOWN AS BASIS OF DESIGN. OTHER MANUFACTURERS THAT MEET SAULENT REQUIREMENTS MAY BE SUBSTITUTED PENDING ARCHITECT APPROVAL.
 8. SEE FINISH PLANS FOR SEALED CONCRETE CONTROL JOINTS.
 9. LINOLEUM SEAMS SHALL BE NET FIT SEAMS IN USE OF HEAT WELDED.
 10. SHOWER CLEARANCE MUST BE 36" MINIMUM FROM FINISH FACE TO FINISH FACE.
 11. PLUMBING FIXTURES AND RESTROOM ACCESSORIES MUST MAINTAIN ACCESSIBILITY REQUIREMENTS FROM FINISH DIMENSIONS.
 12. CONTRACTOR TO PROVIDE BLOCKING BEHIND STUD WALLS WHERE CASEWORK, SHELVING, TECHNOLOGY, RESTROOM ACCESSORIES, ETC. IS MOUNTED.
 13. WOOD DOOR COLOR TO BE SELECTED BY ARCHITECT FROM MANUFACTURER'S FULL RANGE OF COLORS DURING SHOP DRAWING PHASE.
 14. HOLLOW METAL DOOR AND FRAME COLOR TO BE PT-1 UNLESS NOTED OTHERWISE ON INTERIOR ELEVATIONS.
 15. CORNER GUARDS INDICATED ON FINISH PLAN AS CG.
 16. ALL FLOOR CONTROL JOINTS AS INDICATED ON FINISH PLAN ARE TO BE 1/4" DEPTH OF SLAB THICKNESS. IF JOINT IS GREATER THAN 1/2" DEEP, FILL WITH FOAM BACKER ROD 1/8" WIDER THAN JOINT. FILL ALL JOINTS WITH 100% SOLIDS EPOXY FILLER COLOR MATCHED TO CONCRETE.
 17. CONTRACTOR TO PROVIDE WALK OFF MATS AT ALL BUILDING ENTRANCES.
 18. SEE A-651 FOR FINISH SCHEDULE.
 19. SEE INTERIOR ELEVATIONS FOR GYPSUM CONTROL JOINT LOCATIONS. SEE A-652 FOR DETAIL.
 20. CONTINUE FINISH FLOOR UNDER OPEN CASEWORK, TYP.

KEY PLAN



PROJECT NO

2203-1

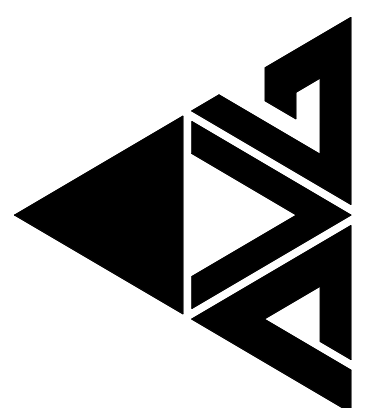
ARCHITECTURAL VISION GROUP, LTD

PLANNERS

ARCHITECTS

CLEVELAND, OHIO 44145

23850 SPERRY DRIVE



CONSULTANT:

MASSILLON CITY SCHOOL
MASSILLON WEST ELEMENTARY
PK-3

250 29TH STREET NW, MASSILLON, OHIO 44646

MASSILLON CITY SCHOOL DISTRICT MASSILLON, OHIO

NO.	DATE	DESCRIPTION
7/23/23	100% BID PERMIT SET	
7/23/23	ISSUED FOR AS	

PROJECT NO 2203-1
DRAWN BY
CHECKED BY
DATEFIRST FLOOR
FINISH PLAN -
UNIT B

SCALE: As Indicated

SHEET NO

A-940-B