

CONSULTANT:

MASSILLON CITY SCHOOL  
MASSILLON WEST ELEMENTARY

PK-3

250 29TH STREET NW, MASSILLON, OHIO 44646

MASSILLON CITY SCHOOL DISTRICT

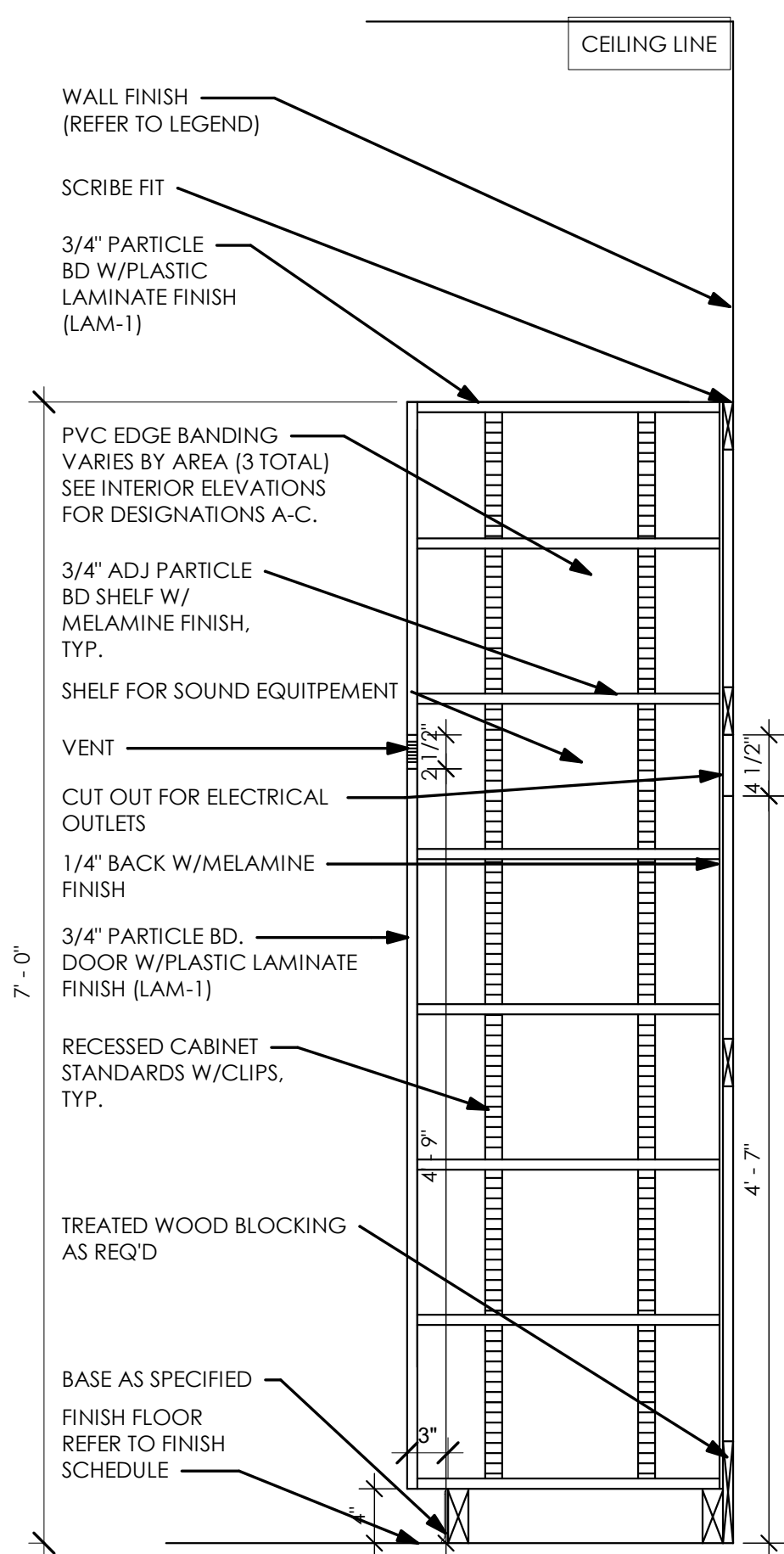
| PROJECT NO | 2203-1                         |
|------------|--------------------------------|
| DRAWN BY   |                                |
| CHECKED BY |                                |
| DATE       |                                |
| DATE       | 7/23/23                        |
| ISSUES/AS  | 100% SUBMIT SET<br>DESCRIPTION |

CASEWORK  
DETAILS

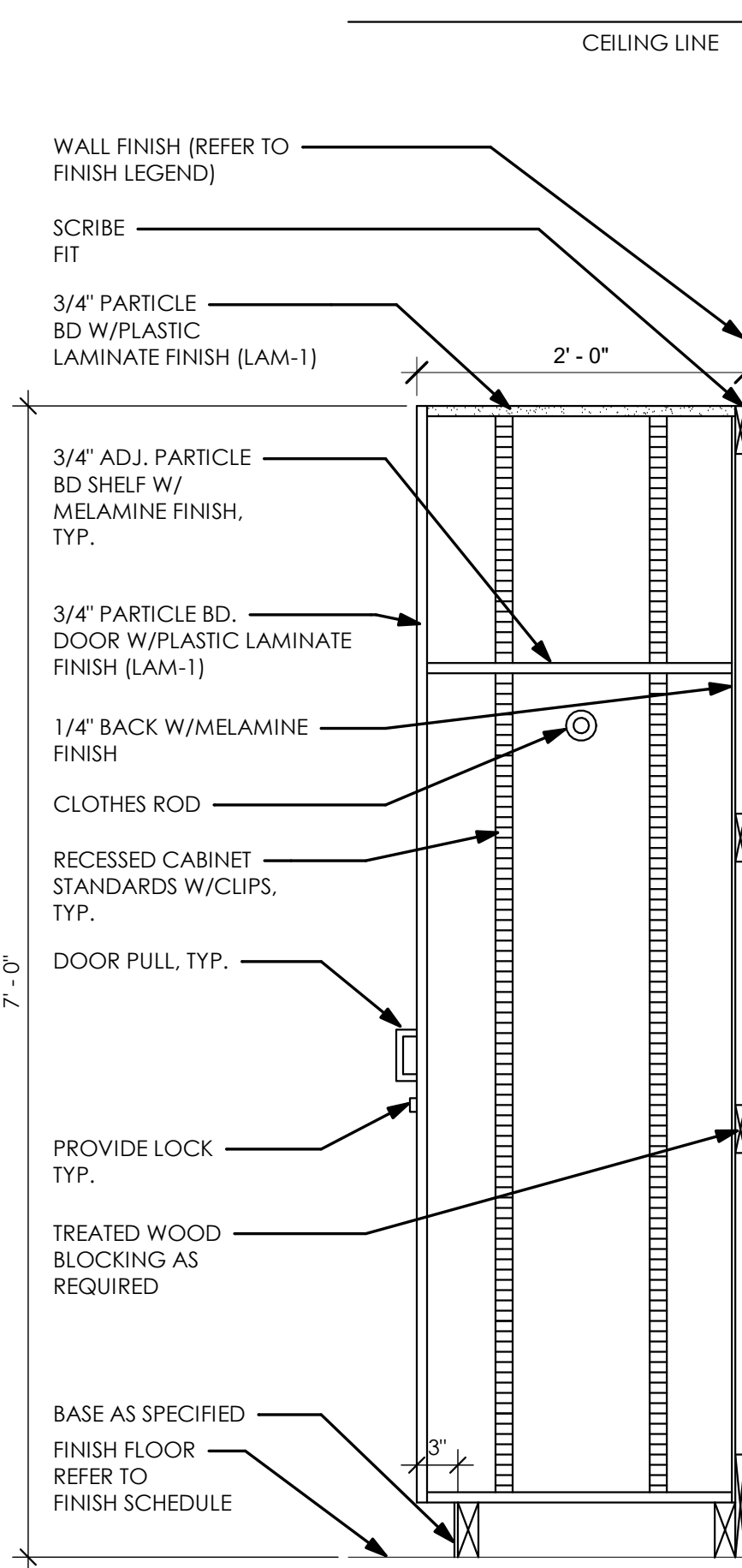
SCALE: As Indicated

SHEET NO

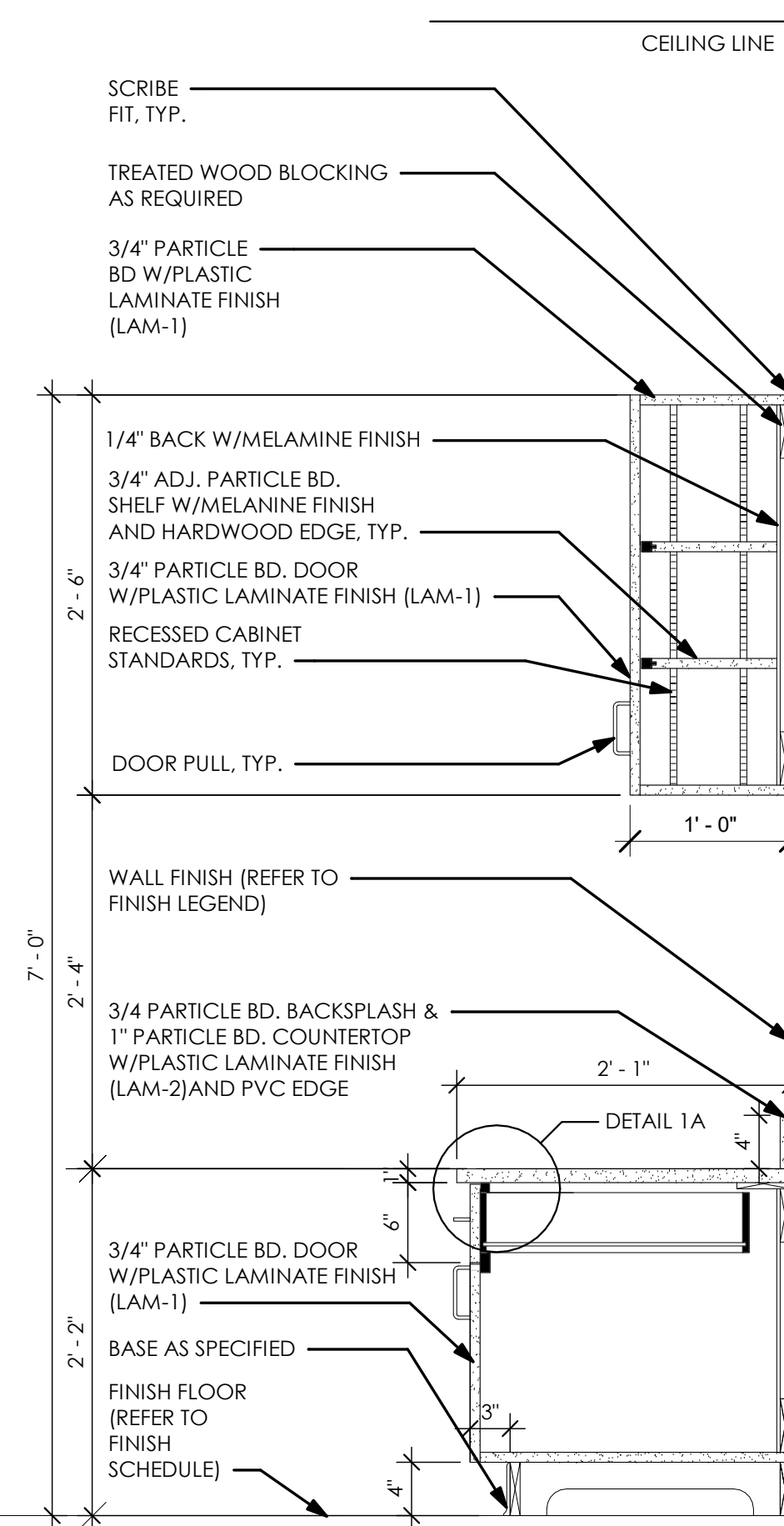
AF-501



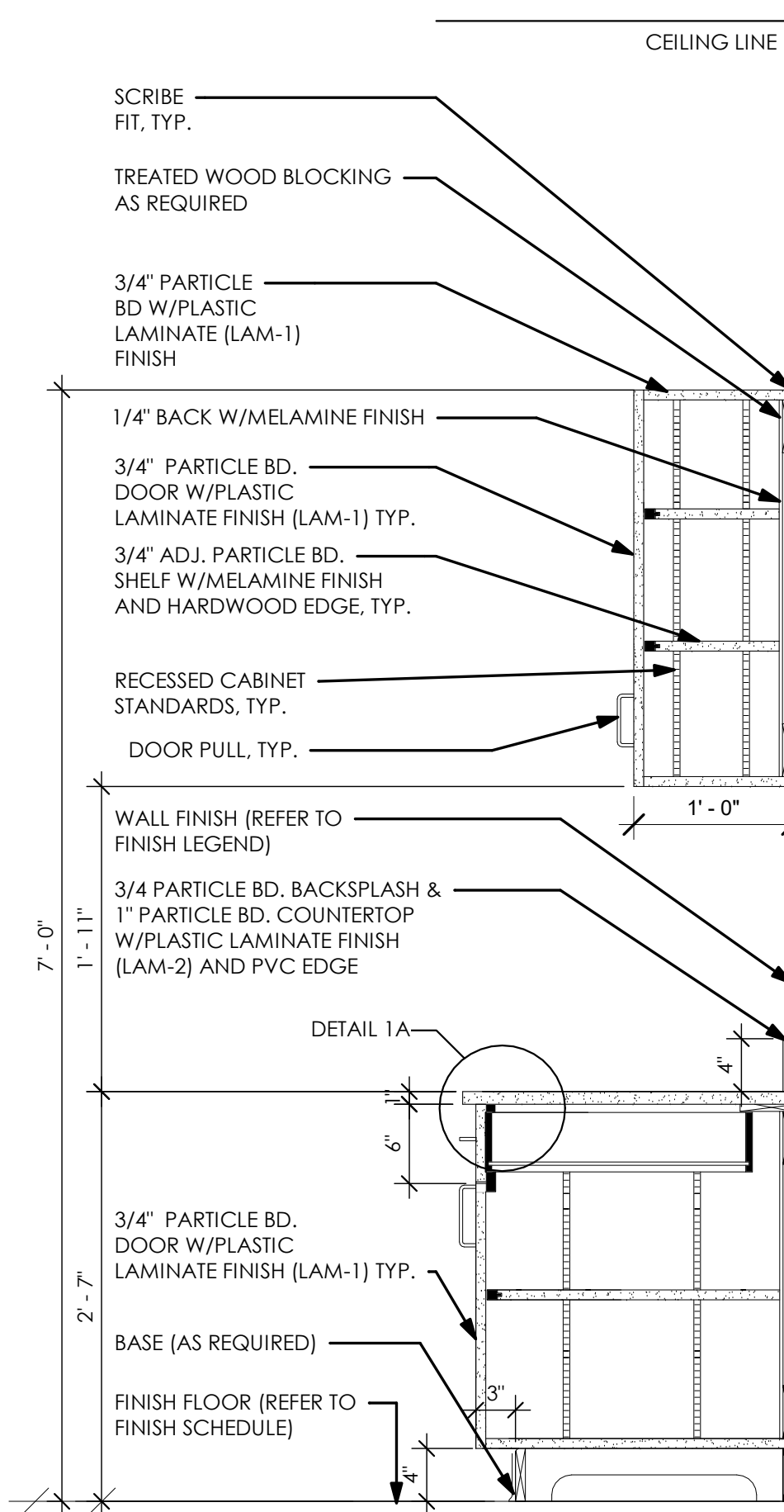
1 CASEWORK DETAIL  
1" = 1'-0"



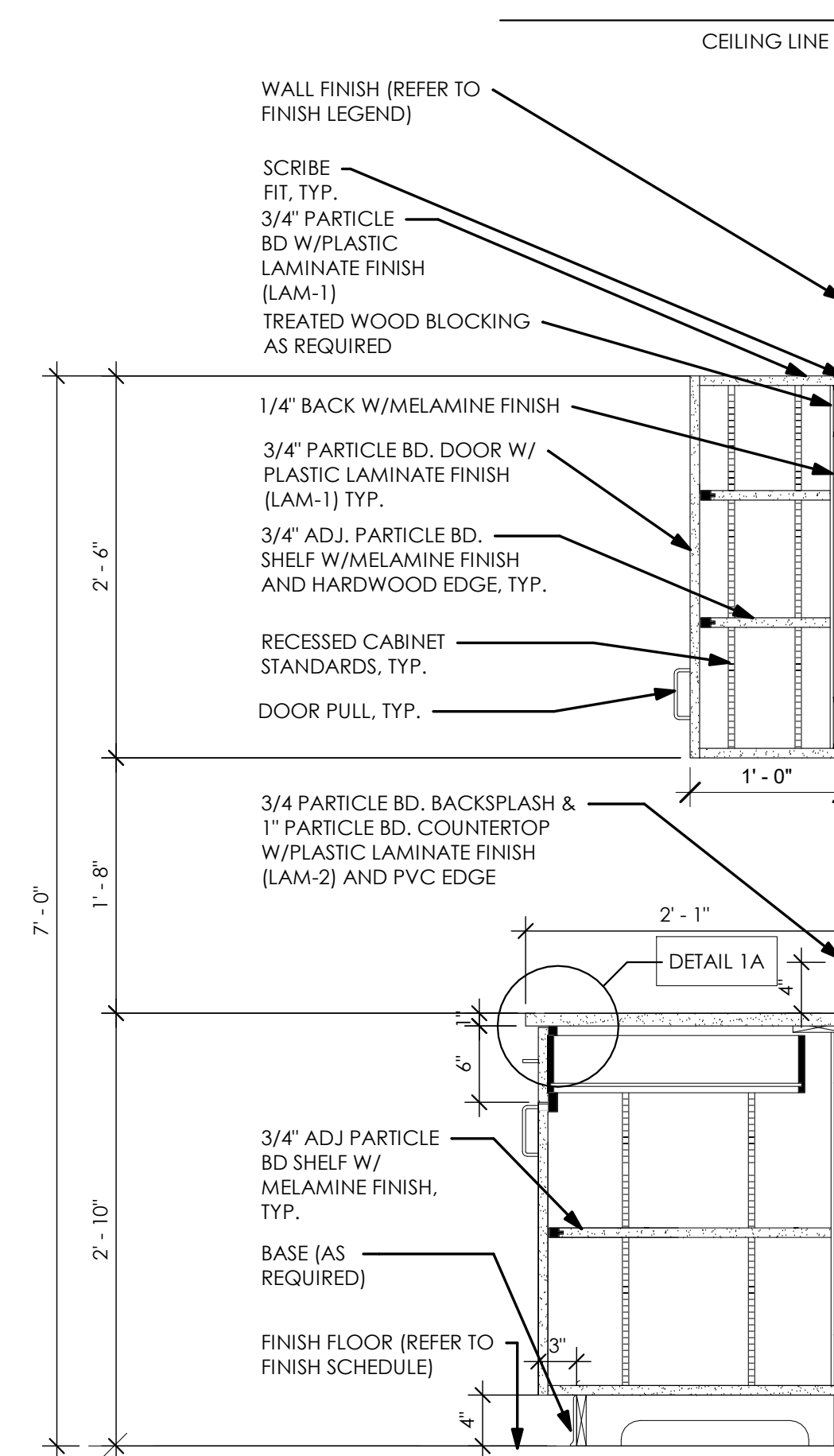
2 CASEWORK DETAIL  
1" = 1'-0"



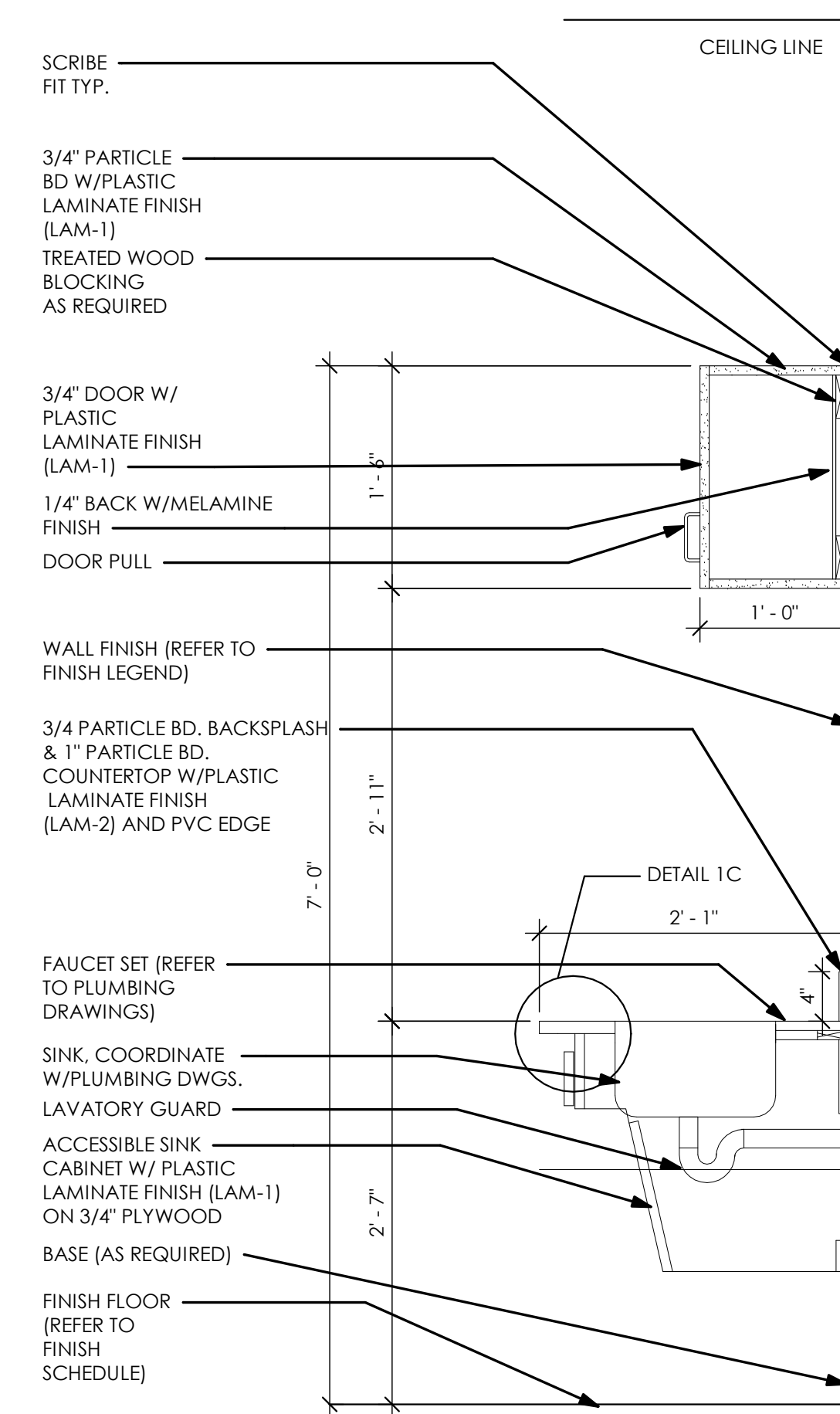
3 CASEWORK DETAIL  
1" = 1'-0"



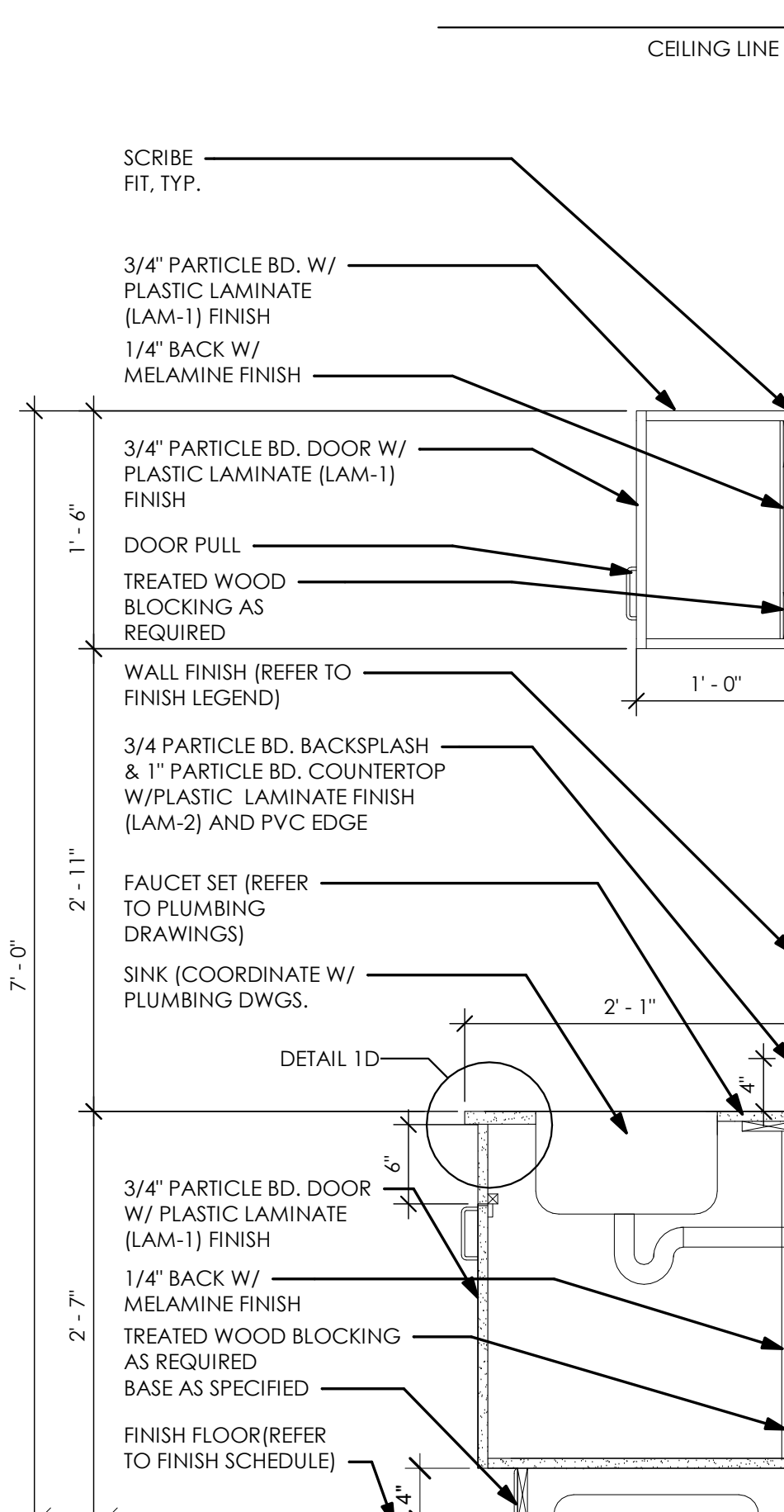
4 CASEWORK DETAIL  
1" = 1'-0"



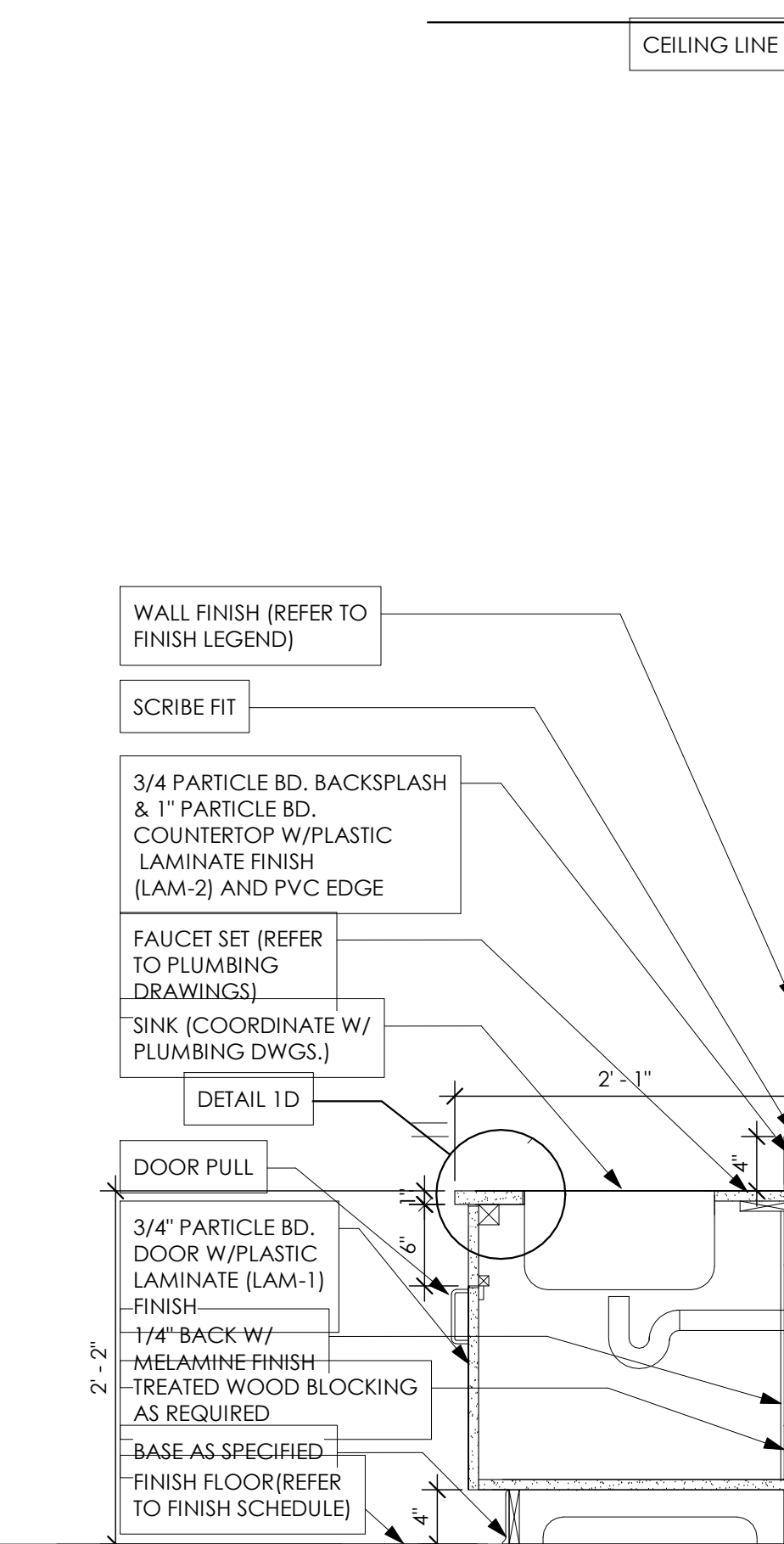
5 CASEWORK DETAIL  
1" = 1'-0"



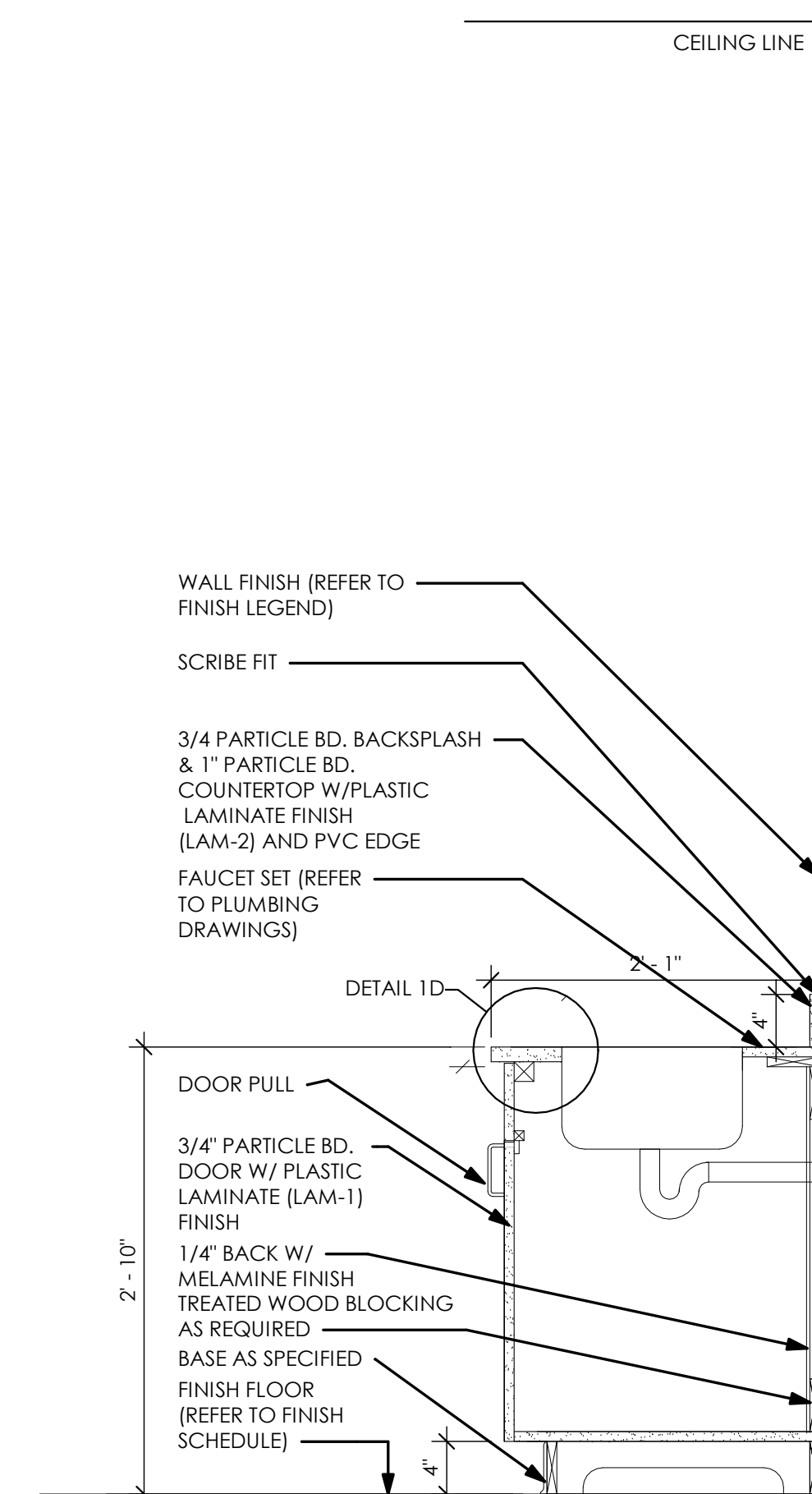
6 CASEWORK DETAIL  
1" = 1'-0"



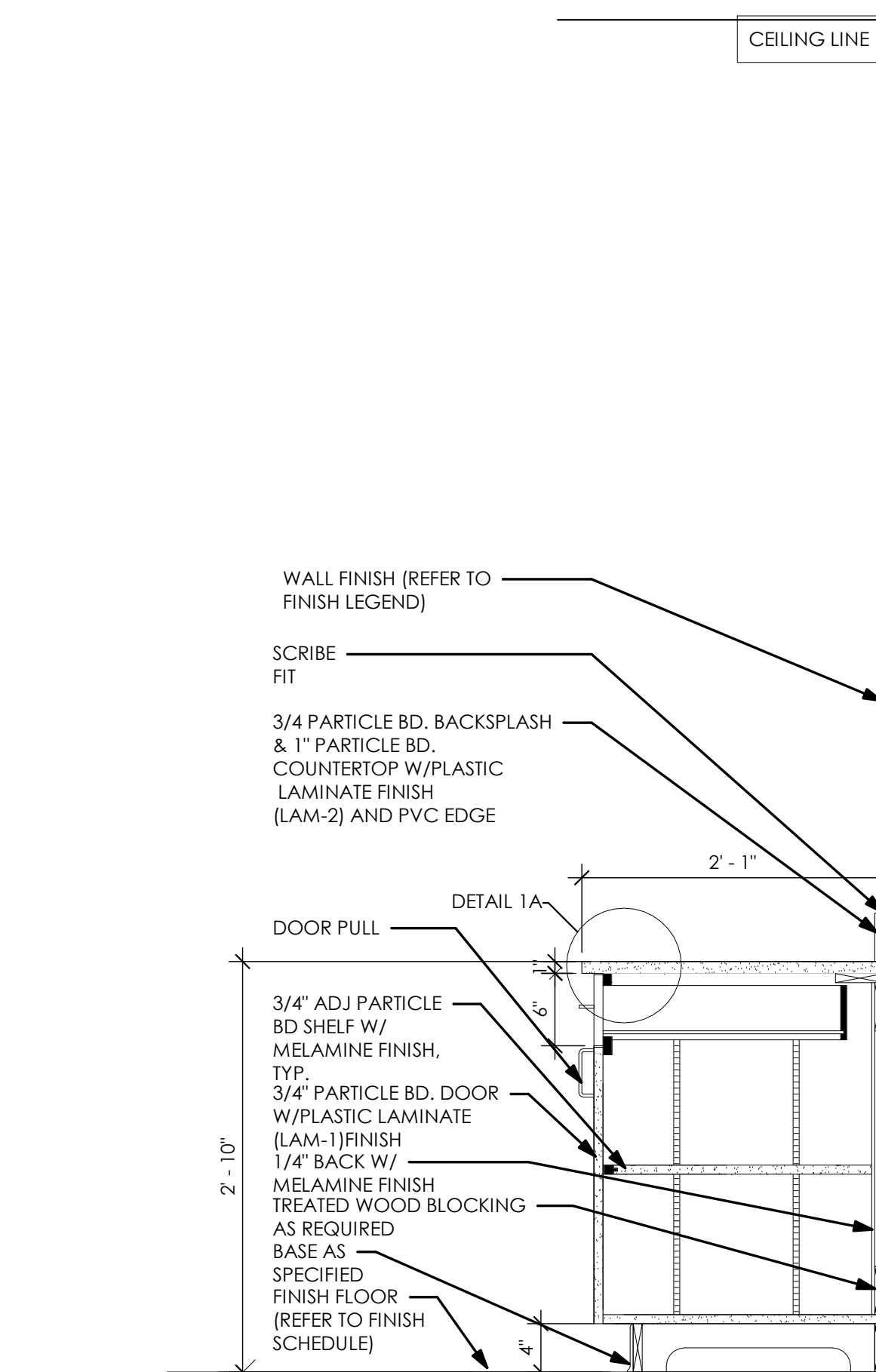
7 CASEWORK DETAIL  
1" = 1'-0"



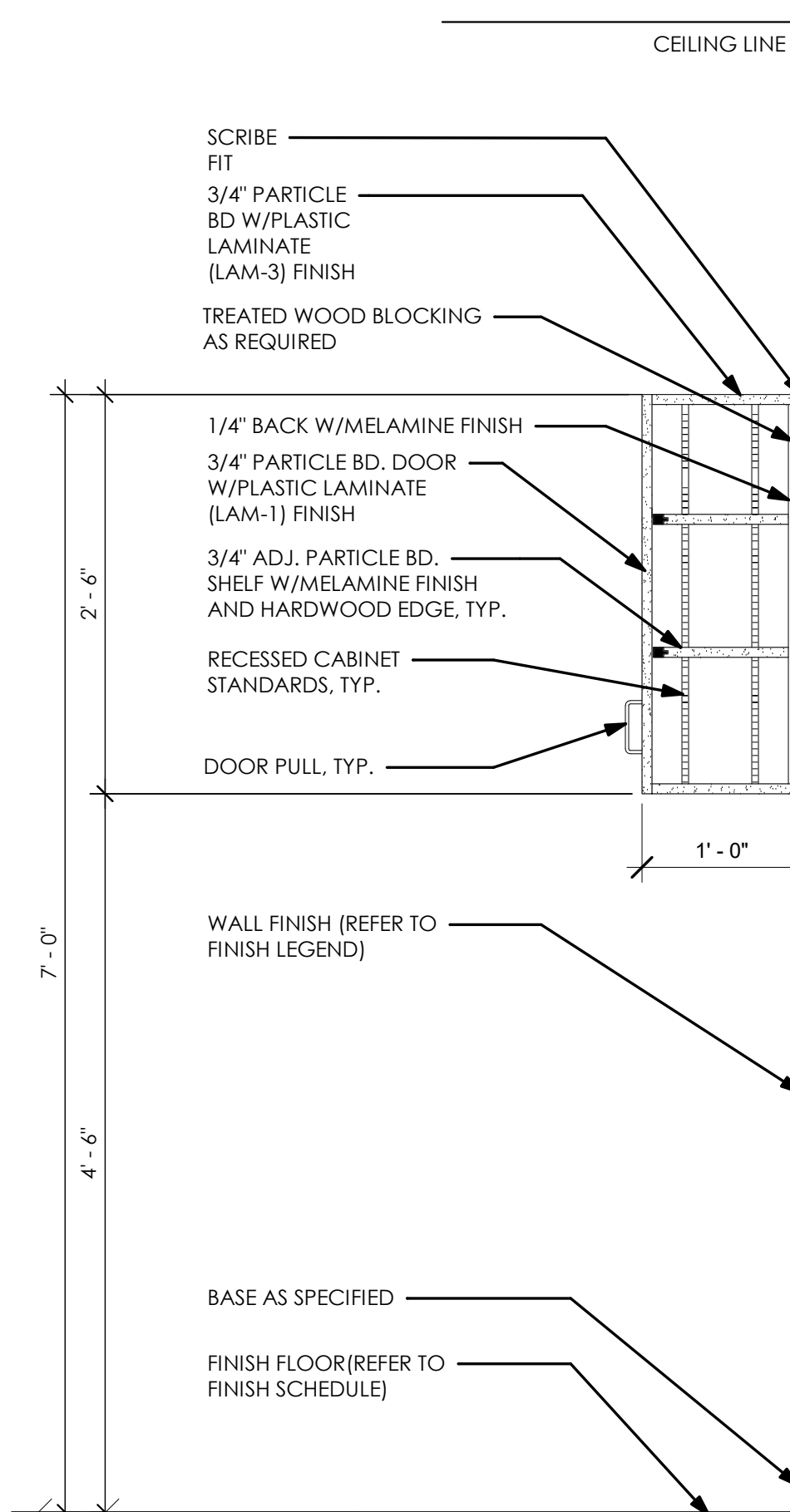
8 CASEWORK DETAIL  
1" = 1'-0"



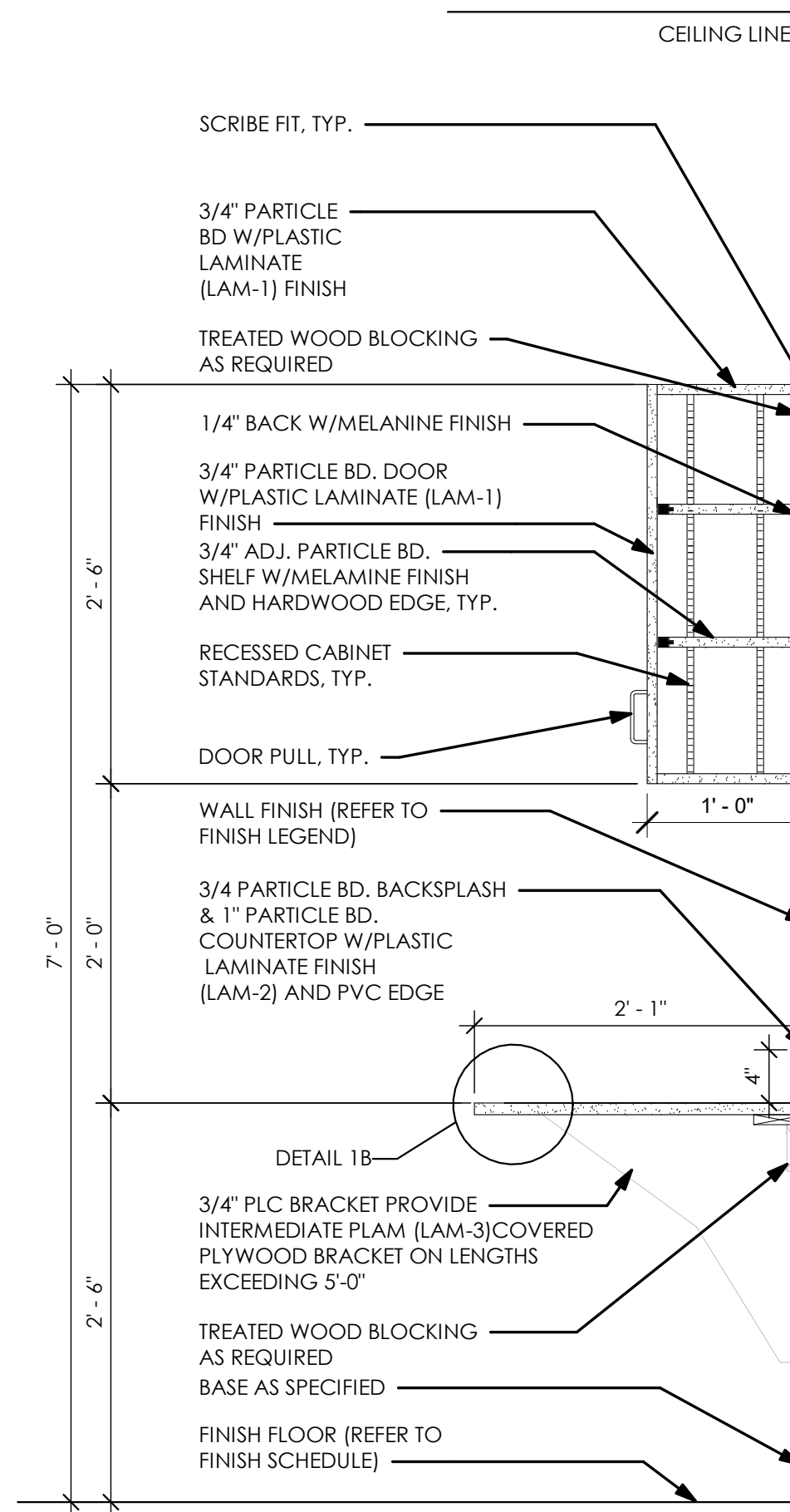
9 CASEWORK DETAIL  
1" = 1'-0"



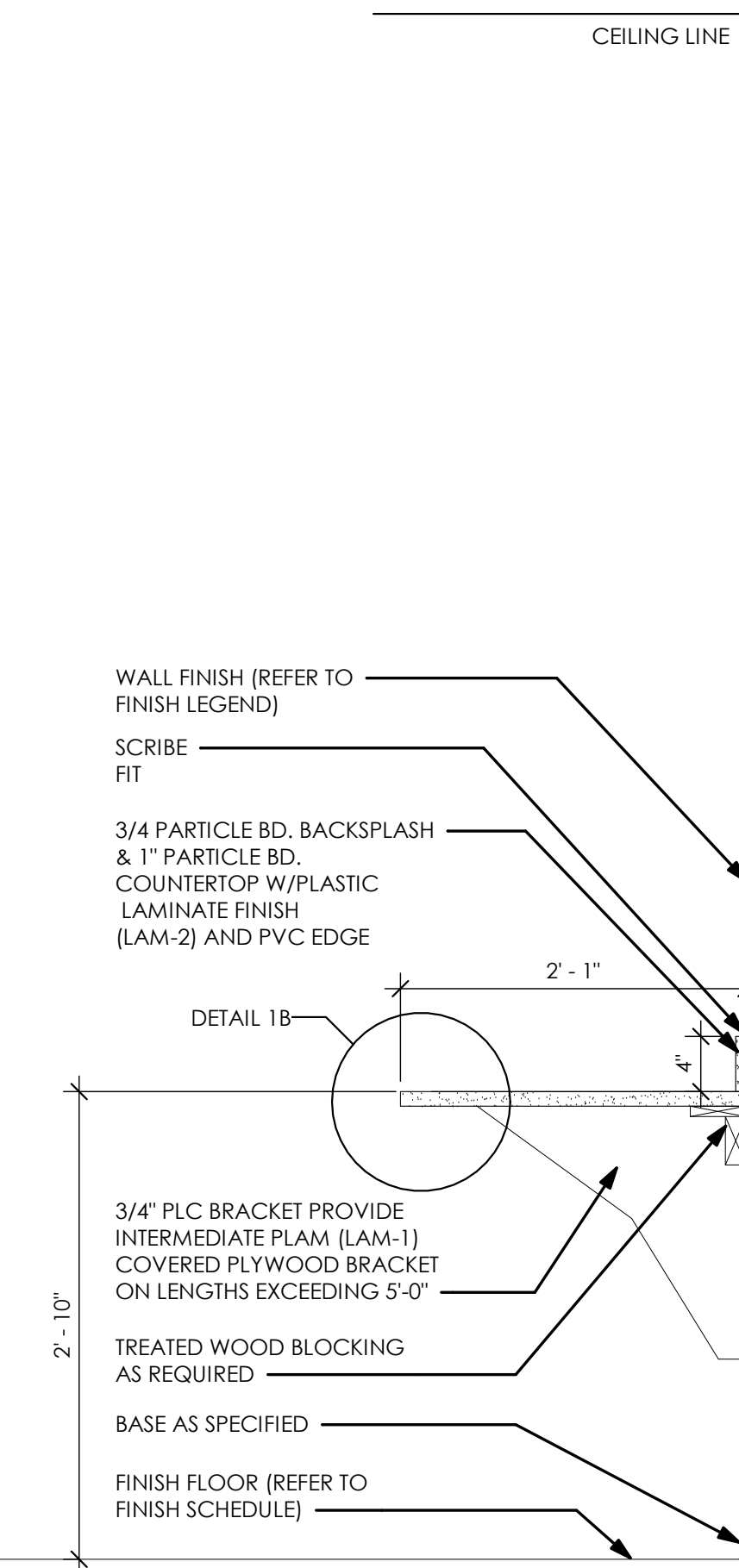
10 CASEWORK DETAIL  
1" = 1'-0"



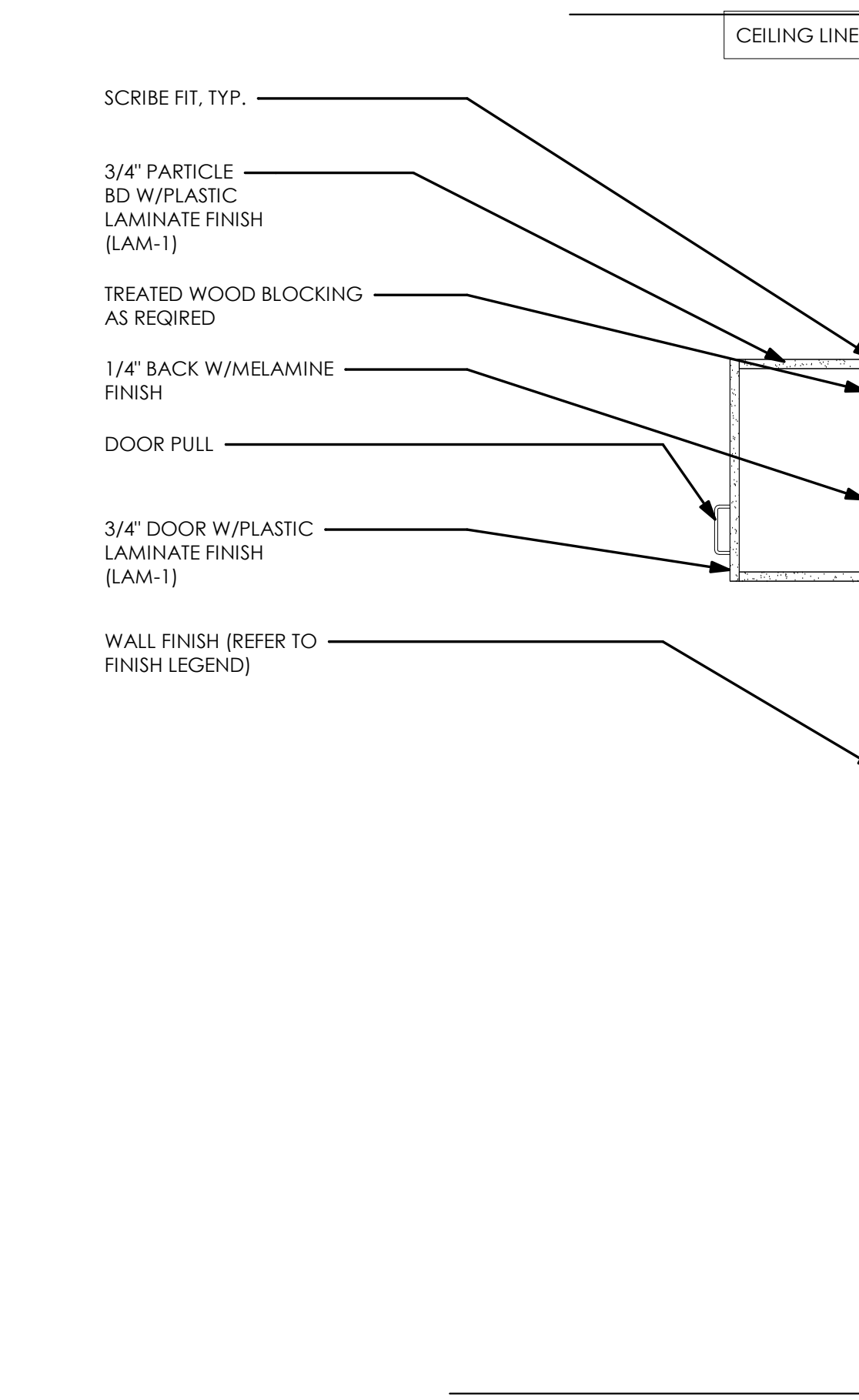
11 CASEWORK DETAIL  
1" = 1'-0"



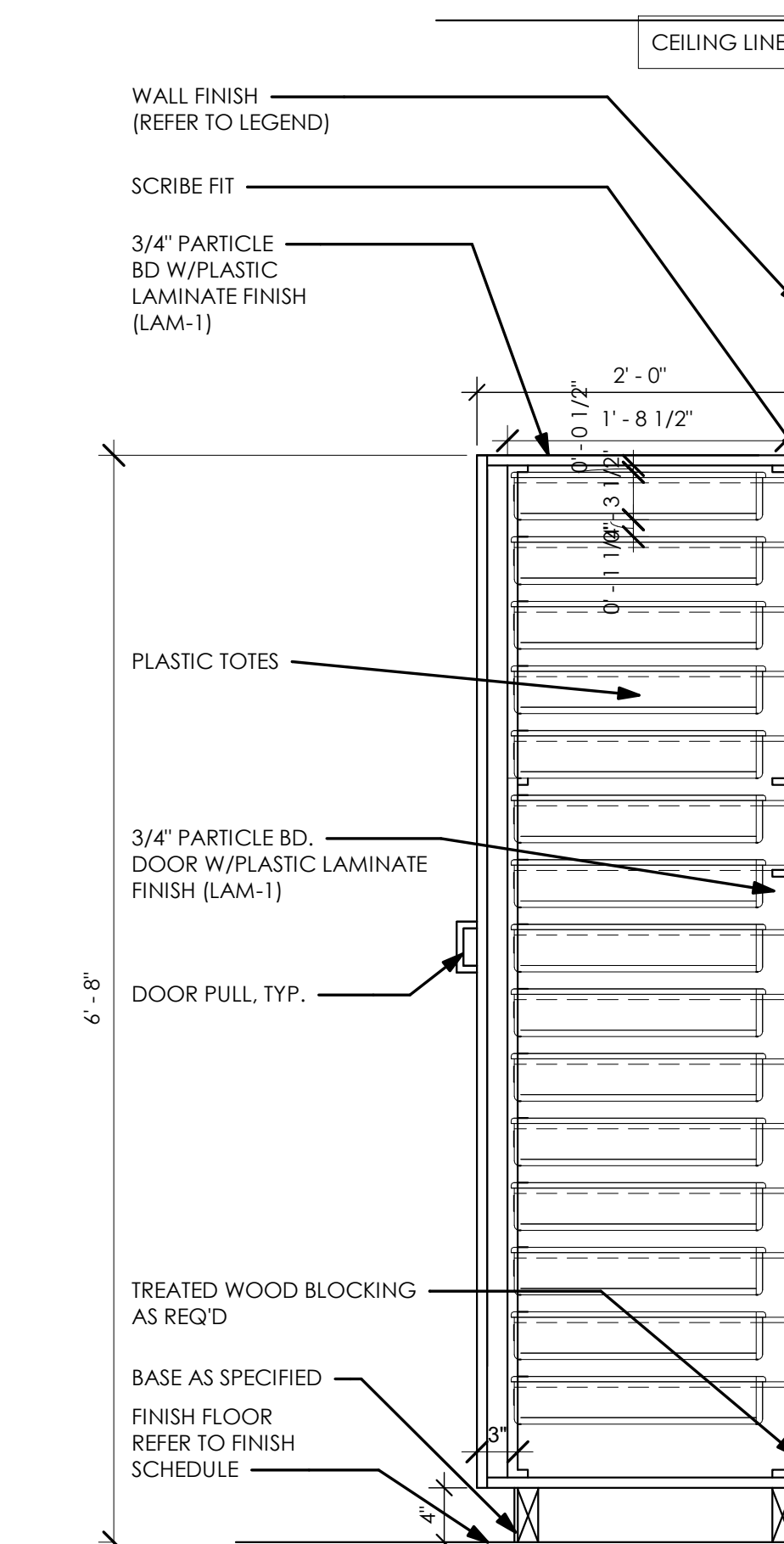
12 CASEWORK DETAIL  
1" = 1'-0"



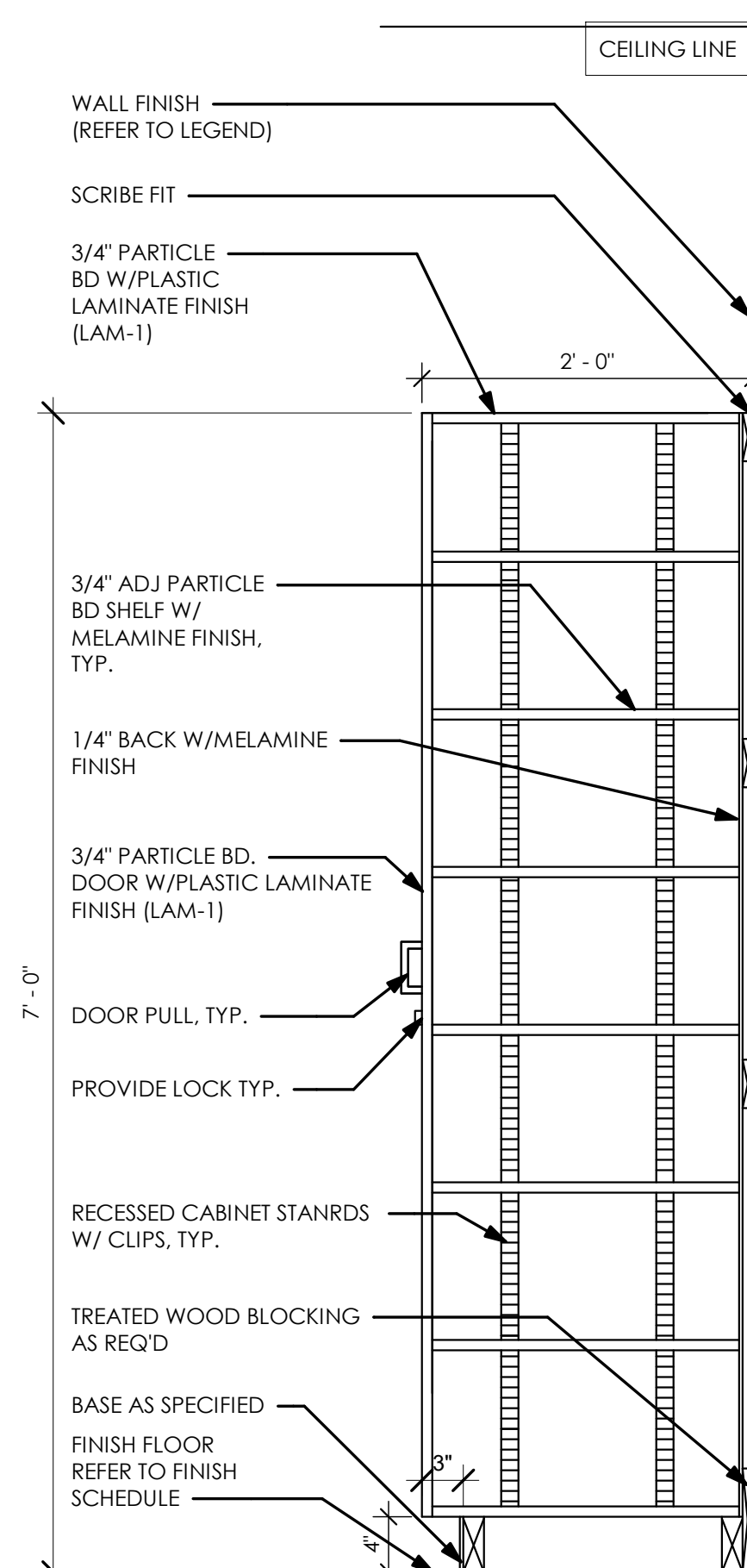
13 CASEWORK DETAIL  
1" = 1'-0"



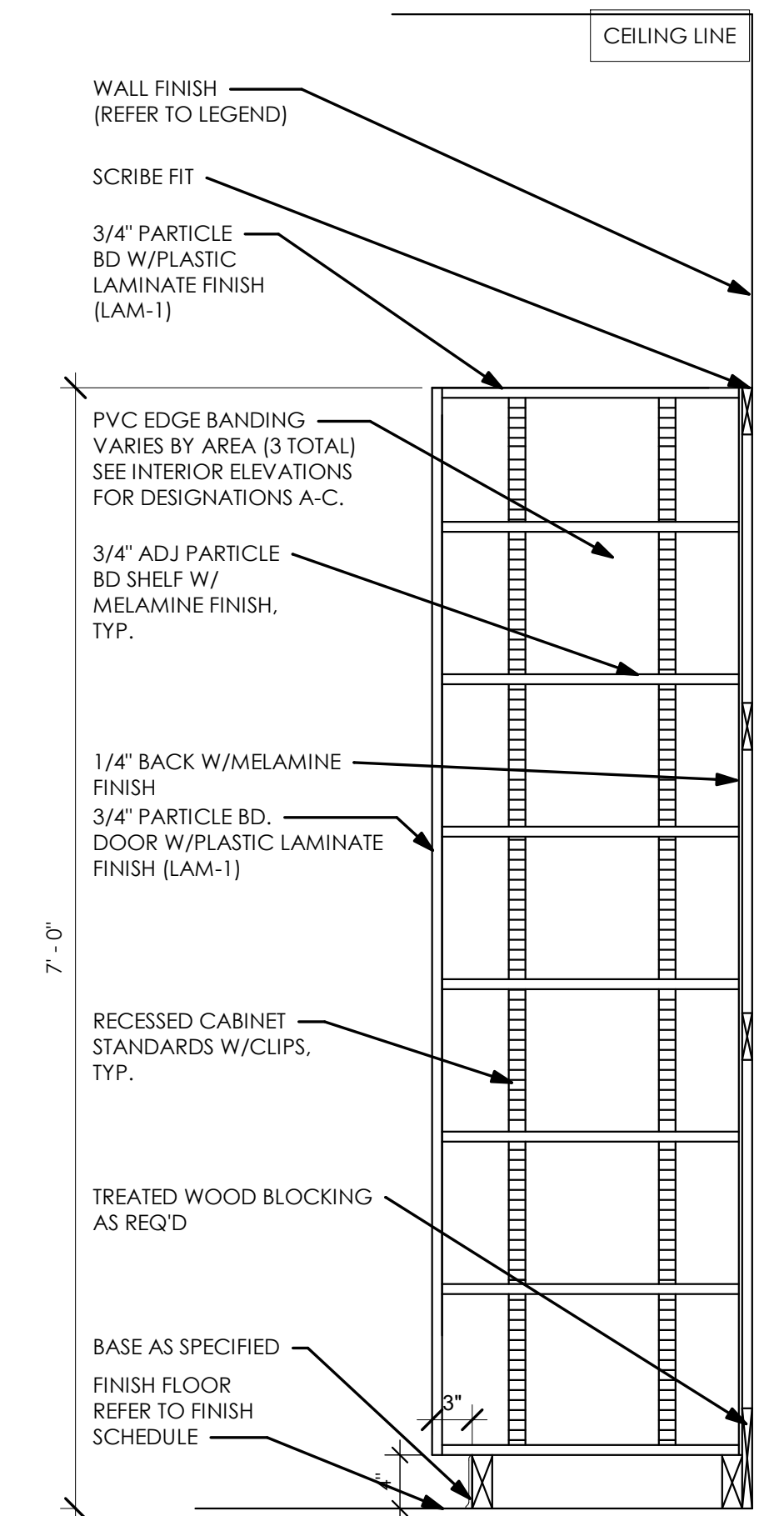
14 CASEWORK SECTION 20  
1" = 1'-0"



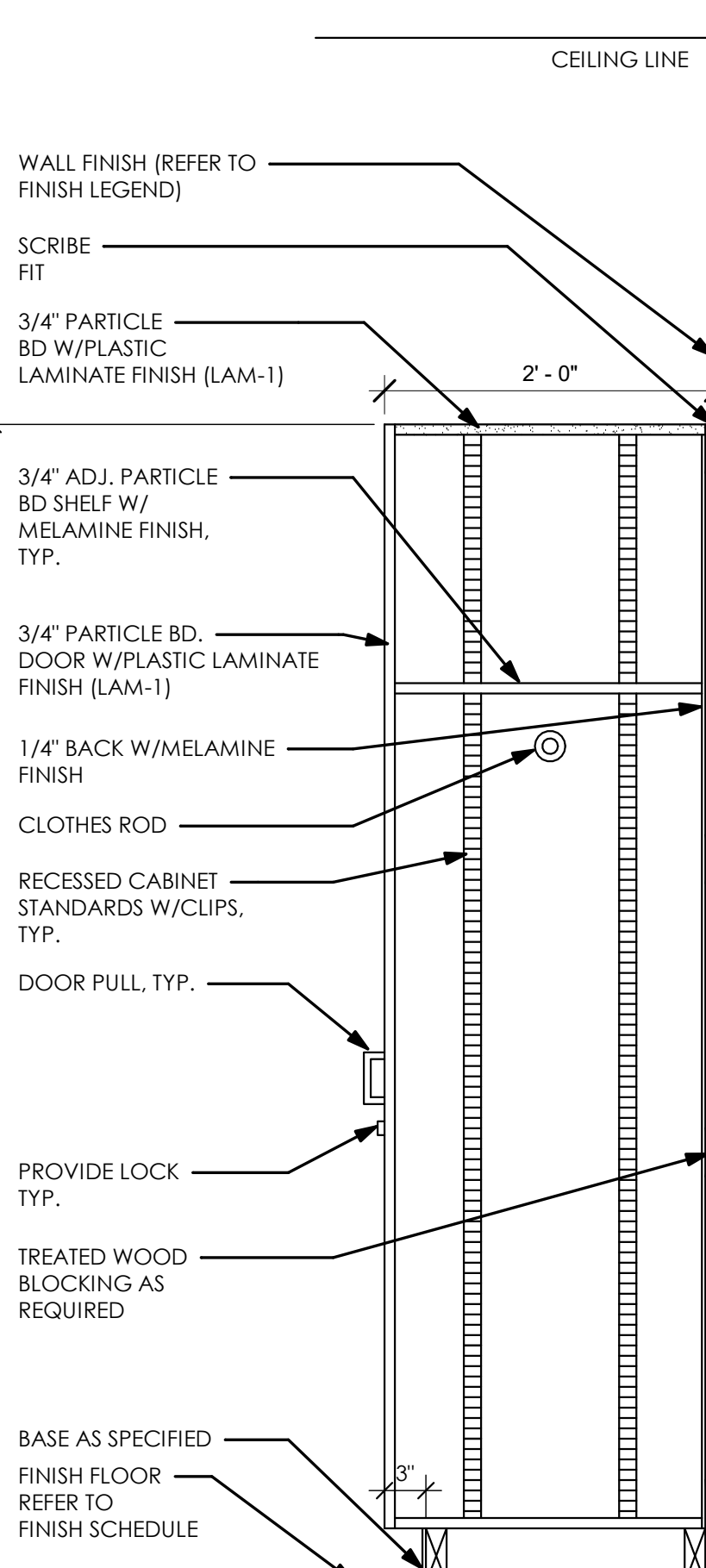
15 CASEWORK SECTION 22  
1" = 1'-0"



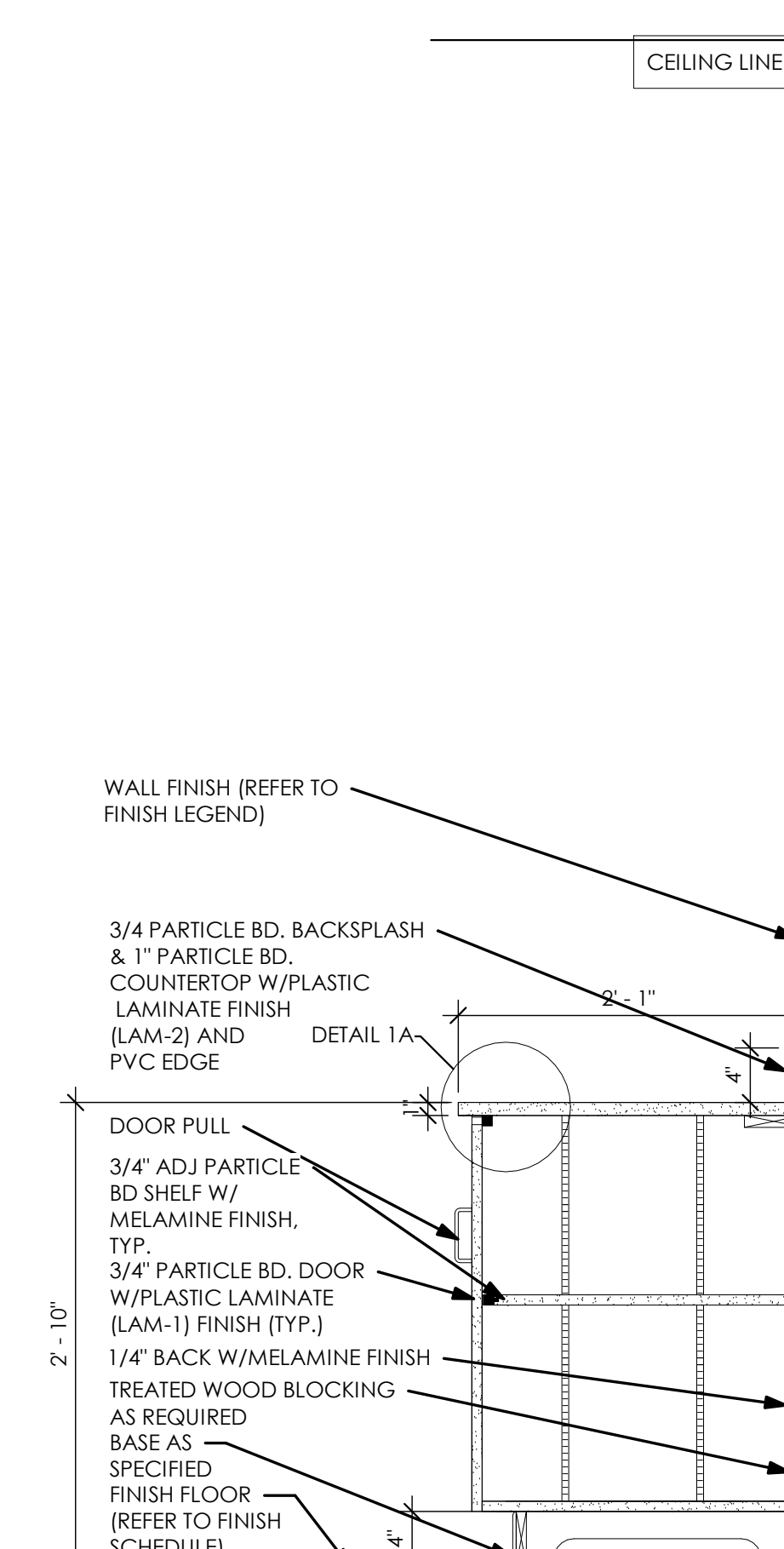
16 CASEWORK SECTION 23  
1" = 1'-0"



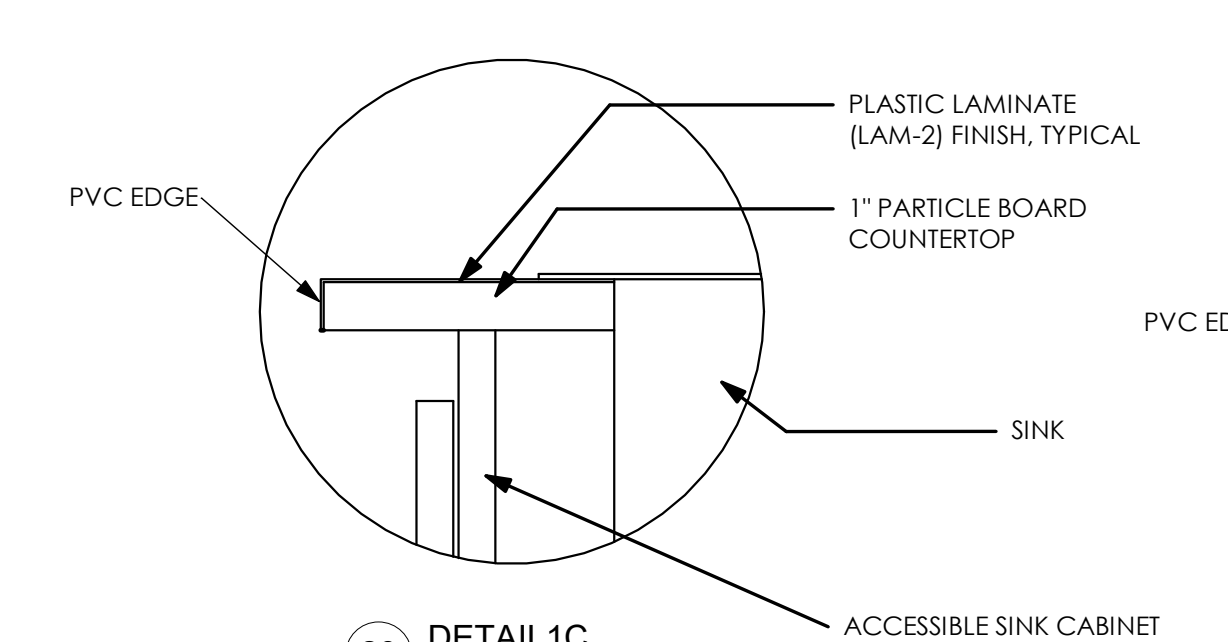
17 CASEWORK SECTION 29  
1" = 1'-0"



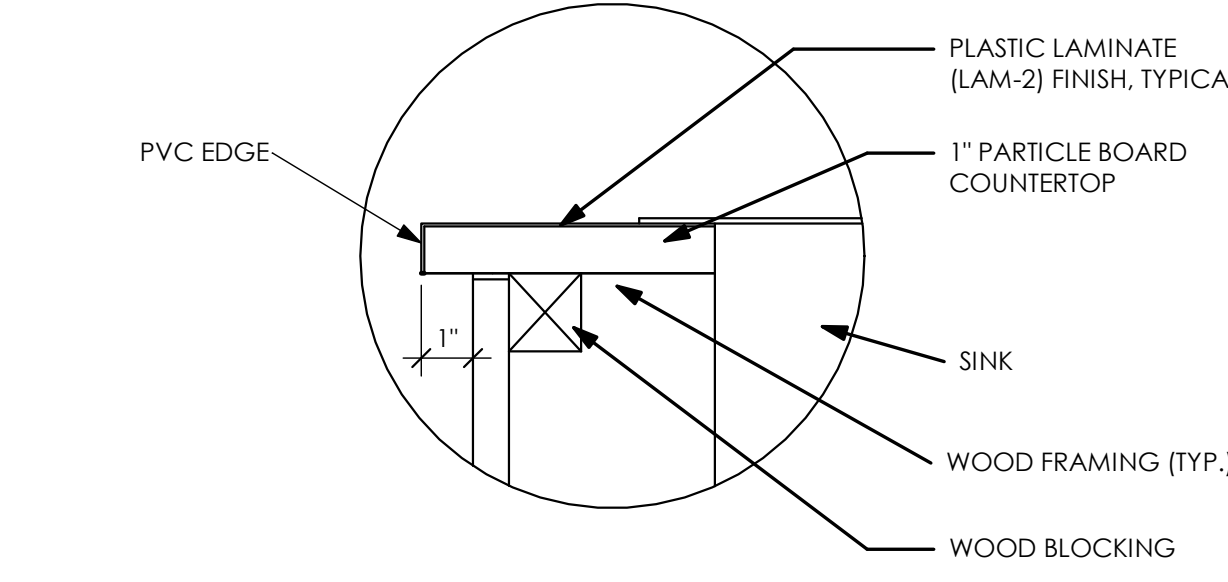
18 CASEWORK SECTION 25  
1" = 1'-0"



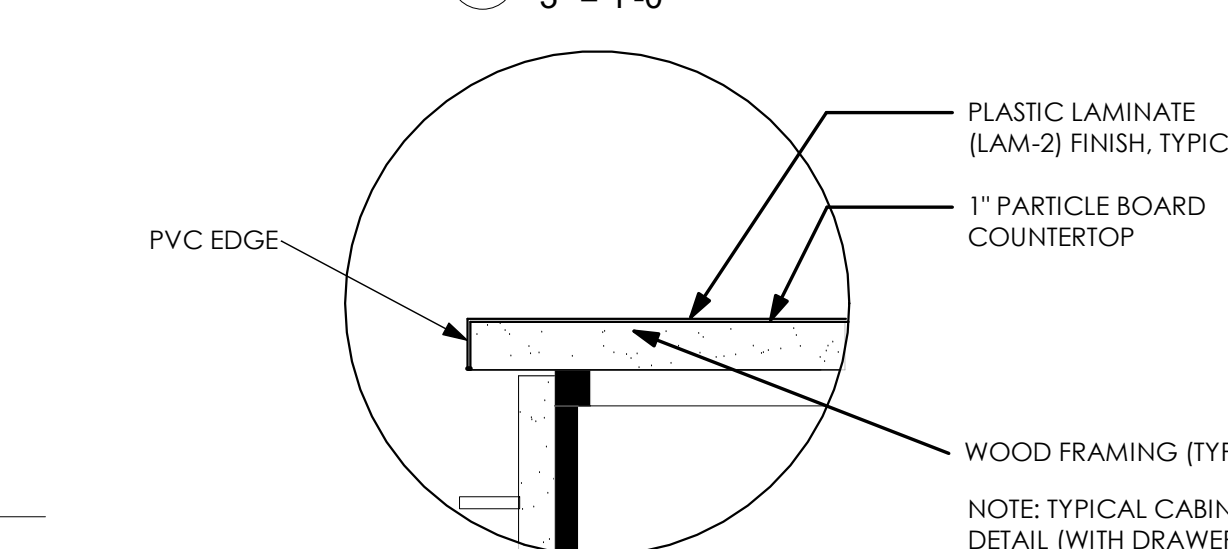
19 CASEWORK SECTION 21  
1" = 1'-0"



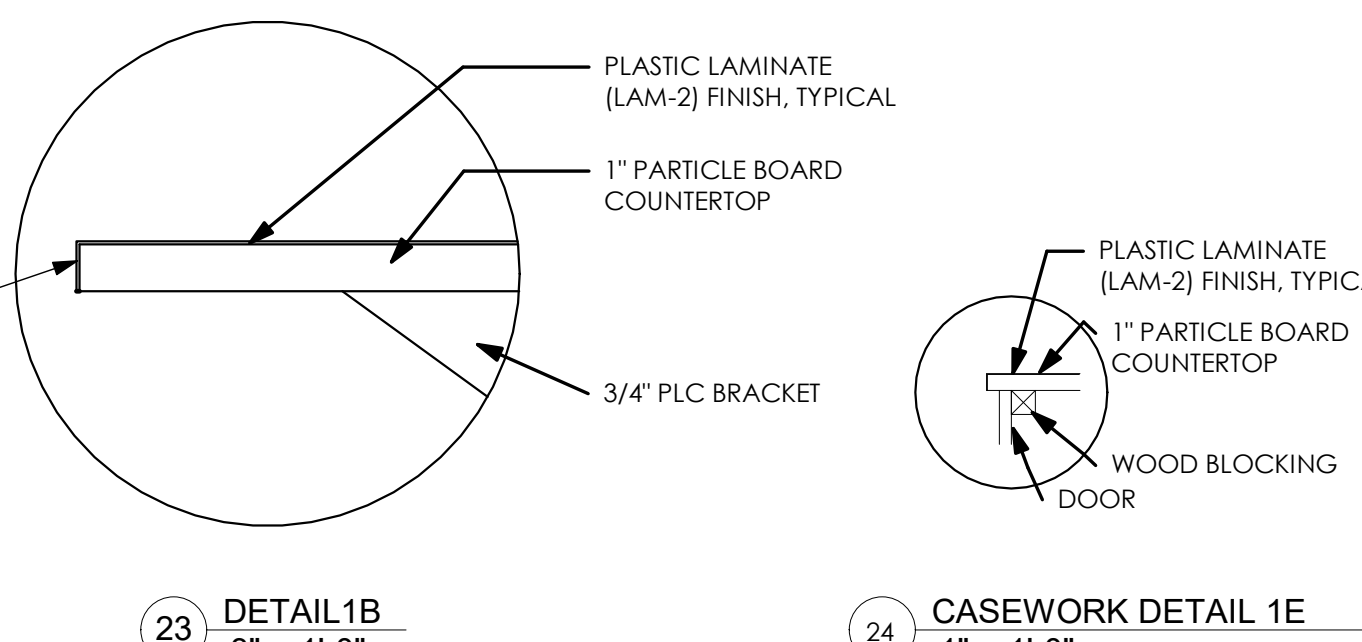
20 DETAIL 1C  
3" = 1'-0"



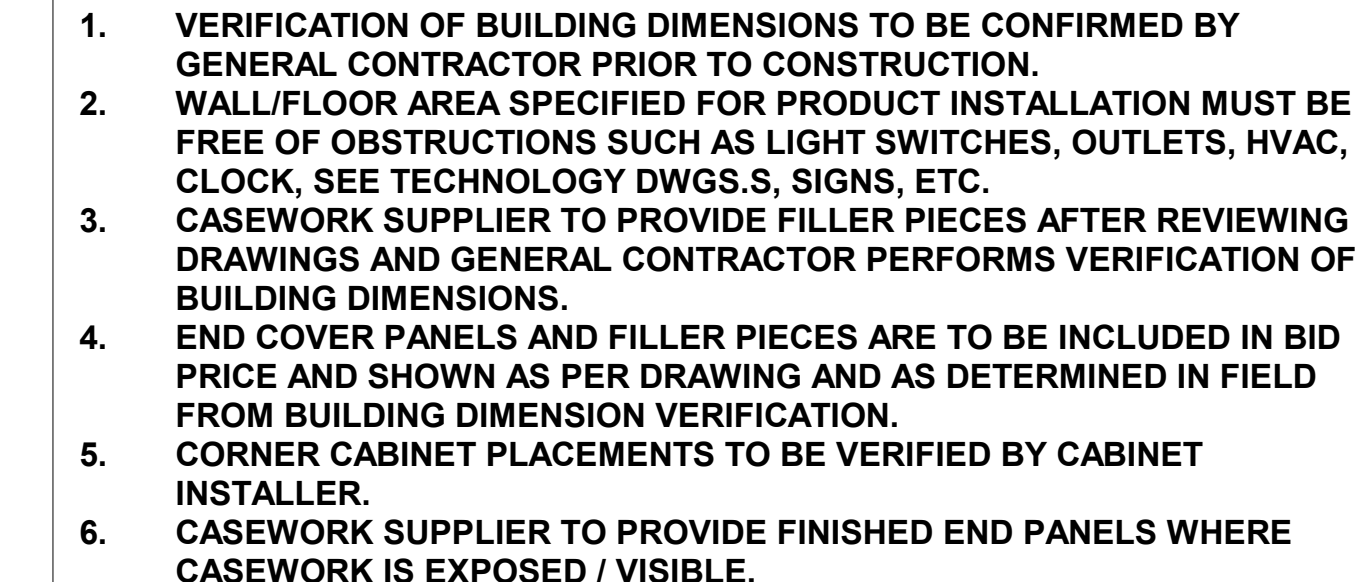
21 DETAIL 1D  
3" = 1'-0"



22 DETAIL 1A  
3" = 1'-0"



23 DETAIL 1B  
3" = 1'-0"



24 CASEWORK DETAIL 1E  
1" = 1'-0"

### TYPICAL CASEWORK NOTES

- VERIFICATION OF BUILDING DIMENSIONS TO BE CONFIRMED BY GENERAL CONTRACTOR PRIOR TO CONSTRUCTION.
- WALL/FLOOR AREA SPECIFIED FOR PRODUCT INSTALLATION MUST BE FREE OF OBSTRUCTIONS SUCH AS LIGHT SWITCHES, OUTLETS, HVAC, CLOACK, SEE TECHNOLOGY DWGS S, SIGNS, ETC.
- CASEWORK SUPPLIER TO PROVIDE FILLER PIECES AFTER REVIEWING DRAWINGS AND GENERAL CONTRACTOR PERFORMS VERIFICATION OF BUILDING DIMENSIONS.
- END COVER PANELS AND FILLER PIECES ARE TO BE INCLUDED IN BID PRICE AND SHOWN AS PER DRAWING AND AS DETERMINED IN FIELD FROM BUILDING DIMENSION VERIFICATION.
- CORNER CABINET PLACEMENTS TO BE VERIFIED BY CABINET INSTALLER.
- CASEWORK SUPPLIER TO PROVIDE FINISHED END PANELS WHERE CASEWORK IS EXPOSED / VISIBLE.
- IF ELECTRICAL OUTLETS OR RACEWAYS ARE LOCATED INSIDE OR BEHIND OR ARE PART OF THE CABINET, CASEWORK MANUFACTURER SHALL PROVIDE CUTOUTS AND COORDINATE CUTOUT SIZE AND LOCATION IN FIELD WITH ELECTRICAL CONTRACTOR.
- IF CASEWORK IS LOCATED IN FRONT OF WINDOWS AND HIGHER THAN THE WINDOW SILL, THAT CABINET SHOULD HAVE FINISHED BACK. VERIFY IN FIELD.
- PROVIDE FIRE RETARDANT TREATED BLOCKING AS REQUIRED FOR CABINET AND METAL SHELF ATTACHMENT IN M ETAL FRAMED STUD WALLS.
- ROUGH OPENING OF 7'-6" HEIGHT IS REQUIRED FOR TALL CABINET INSTALLATION.
- SEE AF-501 FOR TYPICAL CASEWORK MOUNTING HEIGHTS.
- CONTRACTOR TO INCLUDE PRICE FOR LABOR AND MATERIAL FOR GROMMETS AS NEEDED. GROMMETS SHALL BE 3" ROUND, COLOR SELECTED BY INTERIOR DESIGNER. HOLES ARE TO BE CUT IN CASEWORK IN FIELD. LOCATIONS TO BE DETERMINED BY ARCHITECT.
- SEE ELEVATIONS FOR DOOR SWING.
- LAMINATE COLOR TO BE CHOSEN BY ARCHITECT FROM MANUFACTURER'S FULL RANGE OF COLORS.