

FOUNDATION NOTES

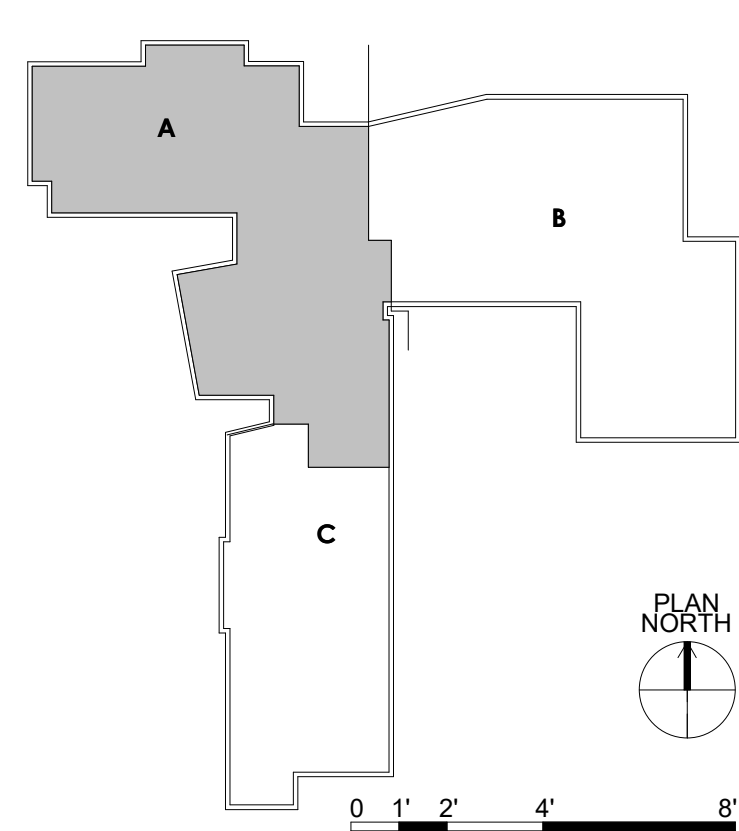
- REFERENCE: GENERAL NOTES - S-001 - S-002, TYPICAL DETAILS - S-300 SERIES
- VERIFY ALL ELEVATIONS AND DIMENSIONS SHOWN WITH ARCHITECTURAL DRAWINGS AND EQUIPMENT SUPPLIERS SHOP DRAWINGS PRIOR TO FABRICATION AND INSTALLATION OF STRUCTURAL STEEL
- REFERENCE ELEVATION = 0'-0" EQUALS SITE ELEVATION = 1089'-00"; VERIFY FINAL SITE ELEVATIONS AND GRADING WITH CIVIL
- SLAB CONSTRUCTION: 4" NORMAL WEIGHT CONCRETE SLAB ON GRADE SET ON 10 MIL VAPOR BARRIER OVER WELL COMPACTED STRUCTURAL FILL AND/OR SUBGRADE (SEE GEOTECHNICAL REPORT AND GENERAL NOTES) AND REINFORCED WITH SYNTHETIC MACROFIBERS. RECOMMENDED DOSAGE IS 3.0 LB/CU. YD.
 - PROVIDE ADDITIONAL REINFORCING BARS AT RE-ENTRANT CORNERS AND CORNERS OF DEPRESSIONS TYPICAL DETAILS.
 - COORDINATE FINISHED FLOOR ELEVATIONS, LOCATIONS OF DEPRESSIONS, RAMPS, ETC. WITH ARCHITECTURAL DRAWINGS.
- TOP OF SLAB ELEVATION = 0'-0" EXCEPT AS NOTED.
 - EXISTING FILL SUPPORTING SLAB ON GRADE SHALL BE EITHER REMOVED OR THOROUGHLY PROOF ROLLED AND COMPACTED TO THE SATISFACTION AND APPROVAL OF THE GEOTECHNICAL ENGINEER.
 - ELEVATIONS NOTED THUS, (X'-XX"), ARE TO TOP OF FOOTING, SLAB OR PIER, UNO.
 - TYPICAL TOP OF FOOTING ELEVATION = (-1'-4"), UNO
 - ALL EXTERIOR FOOTINGS TO EXTEND A MINIMUM OF 42" BELOW FINISHED GRADE. COORDINATE FINAL GRADING WITH CIVIL.
- COORDINATE THE LOCATION AND DEPTH OF ALL UNDERGROUND MECHANICAL, ELECTRICAL, PLUMBING, AND/OR CIVIL WORK PRIOR TO CONSTRUCTION. NOT ALL UNDERGROUND UTILITIES ARE SHOWN ON THE STRUCTURAL DRAWINGS. UTILITY LINE TRENCHES SHALL NOT UNDERMINE FOUNDATIONS.
 - FOUNDATIONS BUILT PRIOR TO THE INSTALLATION OF UNDERGROUND UTILITIES ARE TO BE STEPPED OR DROPPED COMPLETELY BELOW THE UTILITY LINE.
 - WHERE UNDERGROUND UTILITIES ARE TO BE ENGAGED PER TYPICAL DETAILS.
- NO FOUNDATION CONCRETE SHALL BE POURED PRIOR TO INSPECTION AND APPROVAL OF SOIL BEARING CAPACITY BY GEOTECHNICAL ENGINEER.
 - UNSATURABLE EXISTING FILL AT THE LOCATION OF SPREAD OR STRIP FOOTINGS SHALL BE UNDERCUT TO STABLE NATURAL SOIL TO THE SATISFACTION AND APPROVAL OF THE GEOTECHNICAL ENGINEER AND BACKFILLED WITH CONTROLLED DENSITY FILL (CDF).
- CMU WALL CONSTRUCTION:
 - 8" CMU W/ #5 @ 32" OC VERTICAL REINFORCING UNLESS NOTED OTHERWISE.
 - 12" CMU W/ #5 @ 32" OC VERTICAL REINFORCING AT GYM.
- ALL NON-LOAD BEARING MASONRY WALLS SHALL BE PLACED ON A THICKENED SLAB. REFERENCE ARCHITECTURAL DRAWINGS FOR WALL LOCATIONS AND EXTENTS AND SEE TYPICAL DETAIL ON S-302.
- "MP" DENOTES MASONRY PIER. MASONRY PIERS SHALL EXTEND THE FULL HEIGHT OF WALL UNLESS NOTED OTHERWISE. SEE TYPICAL MASONRY DETAILS.

SQUARE SPREAD FOOTING SCHEDULE					
MARK	LENGTH	WIDTH	DEPTH	REINFORCING	REMARKS
F3.0	3'-0"	3'-0"	1'-0"	(4) #4 EW BOT.	
F4.0	4'-0"	4'-0"	1'-0"	(4) #5 EW BOT.	
F4.5	4'-6"	4'-0"	1'-0"	(5) #5 EW BOT.	
F4.5A	4'-6"	4'-6"	2'-6"	(4) #5 EW T&B	
F5.0	5'-0"	5'-0"	1'-2"	(5) #5 EW BOT.	
F5.0A	5'-0"	5'-0"	2'-4"	(6) #5 EW T&B	
F5.5A	5'-6"	5'-6"	2'-6"	(6) #5 EW T&B	
F6.0	6'-0"	6'-0"	1'-2"	(6) #5 EW BOT.	
F7.0	7'-0"	7'-0"	1'-4"	(6) #5 EW BOT.	
F7.0A	7'-6"	7'-6"	2'-6"	(6) #5 EW T&B	
F8.0	8'-0"	8'-0"	1'-8"	(9) #6 EW BOT.	

WALL STRIP FOOTING SCHEDULE				
MARK	SIZE		REINFORCING	REMARKS
	WIDTH	DEPTH		
WF2.0	2' - 0"	1' - 0"	CONT. (2)#5	
WF2.0A	2' - 0"	2' - 6"	CONT. (3)#5 T&B	
WF3.0	3' - 0"	1' - 0"	CONT. (3)#5	
WF3.0A	3' - 0"	2' - 6"	CONT. (4)#5 T&B	
WF5.0A	5' - 0"	2' - 6"	#5 @ 12" OC EW T&B	

LEVEL SCHEDULE	
NAME	ELEVATION
ROOF FRAMING - MECH ROOM	32'-0"
ROOF FRAMING PLAN	28'-0"
SECOND FLOOR	13'-4"
FIRST, SECOND FLOOR	12'-4"
FIRST FLOOR	0'-0"
FOUNDATION (TYP UNO)	-1'-4"

KEY PLAN



1 FOUNDATION PLAN - UNIT A

SCALE: 1/8" = 1'-0"

0 1' 2' 4' 8'

FOUNDATION PLAN UNIT A

SCALE: 1/8" = 1'-0"

SHEET NO

S-101-A