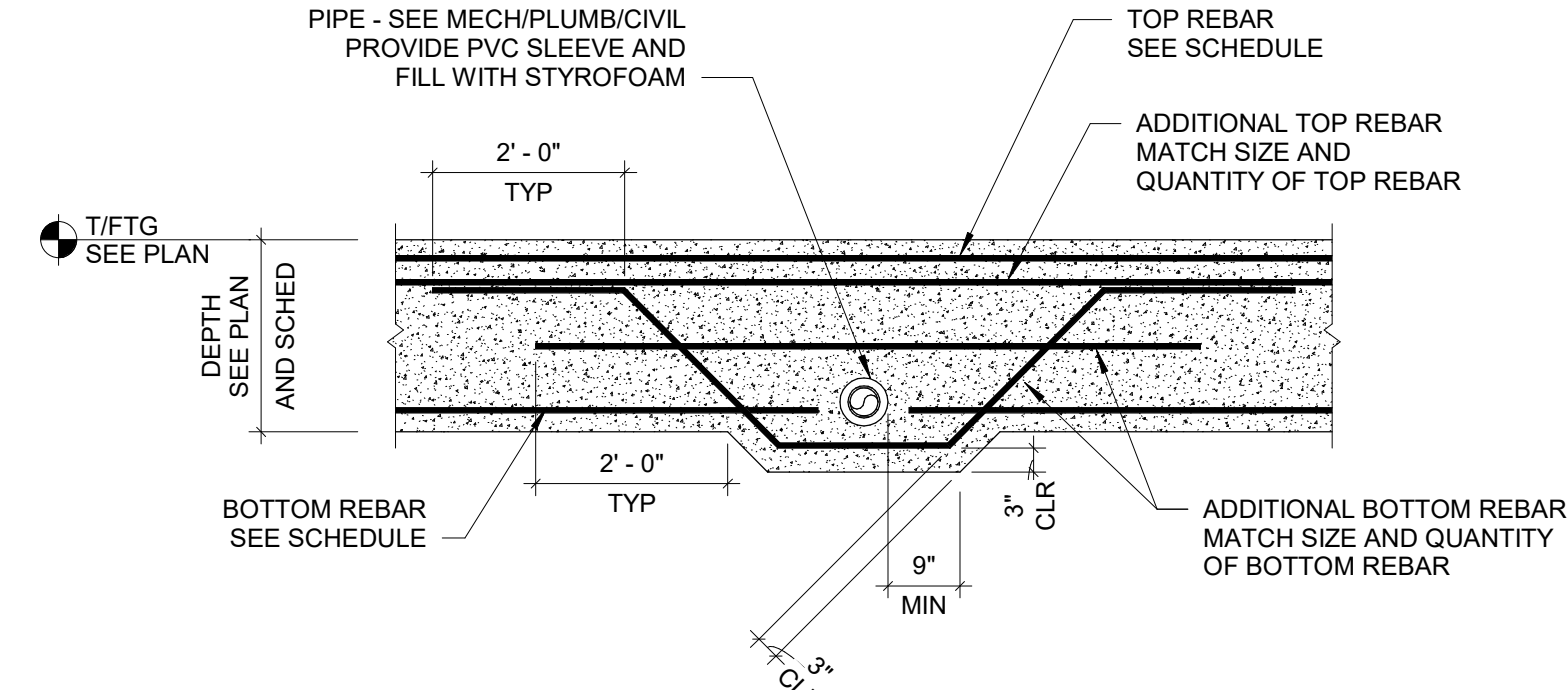
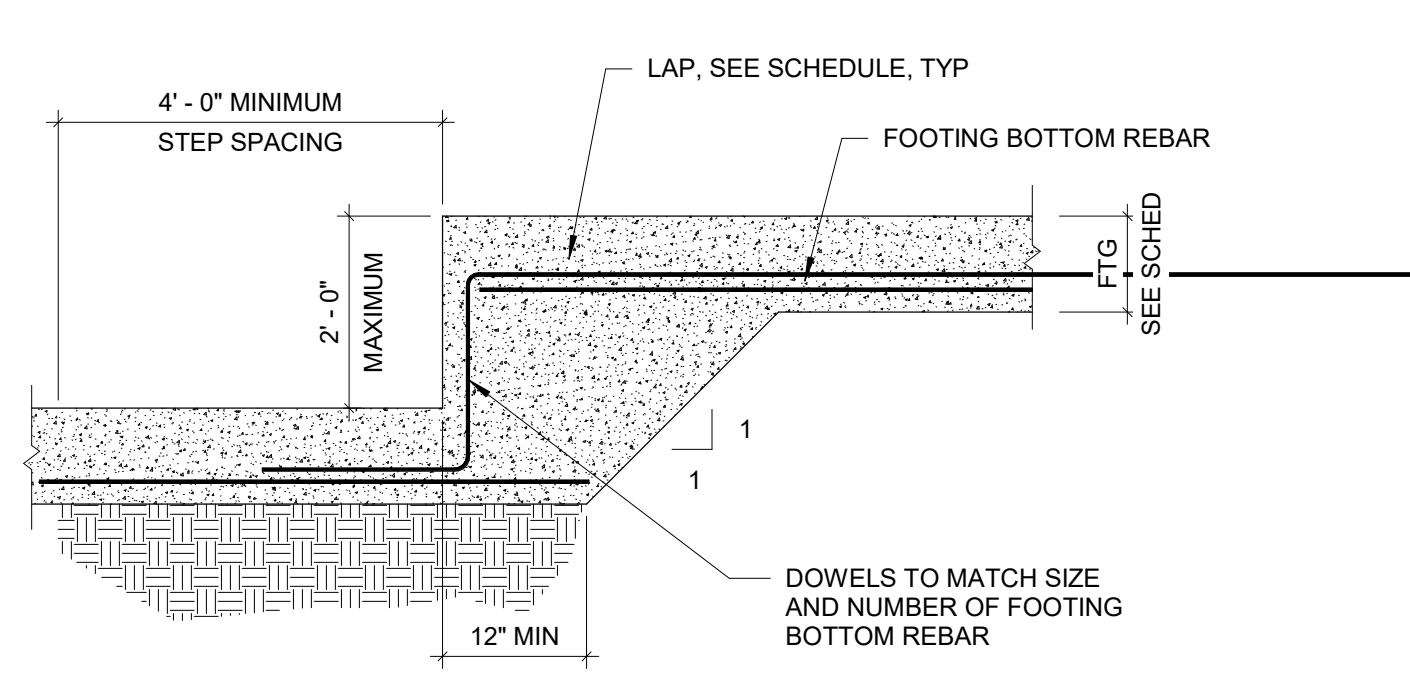


MARK	DATE	DESCRIPTION

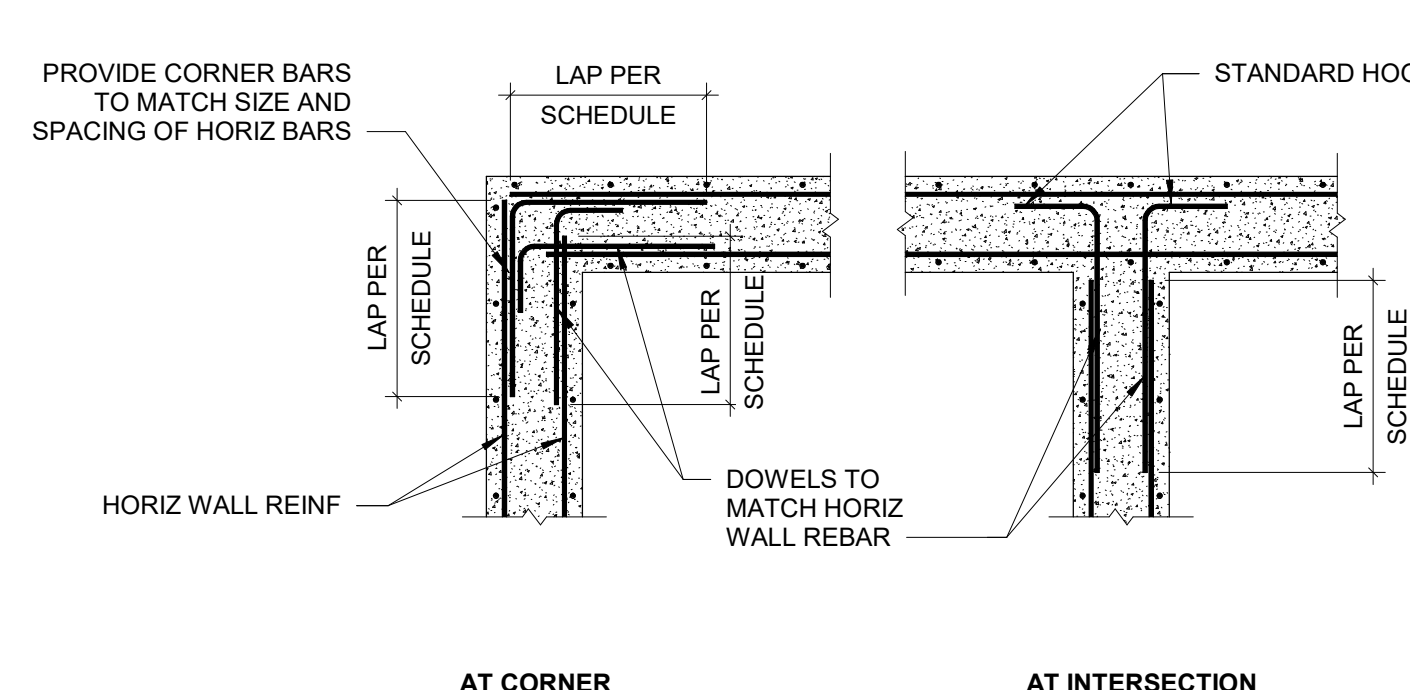
PROJECT NO	2203-1
DRAWN BY	OEC
CHECKED BY	OEC
DATE	



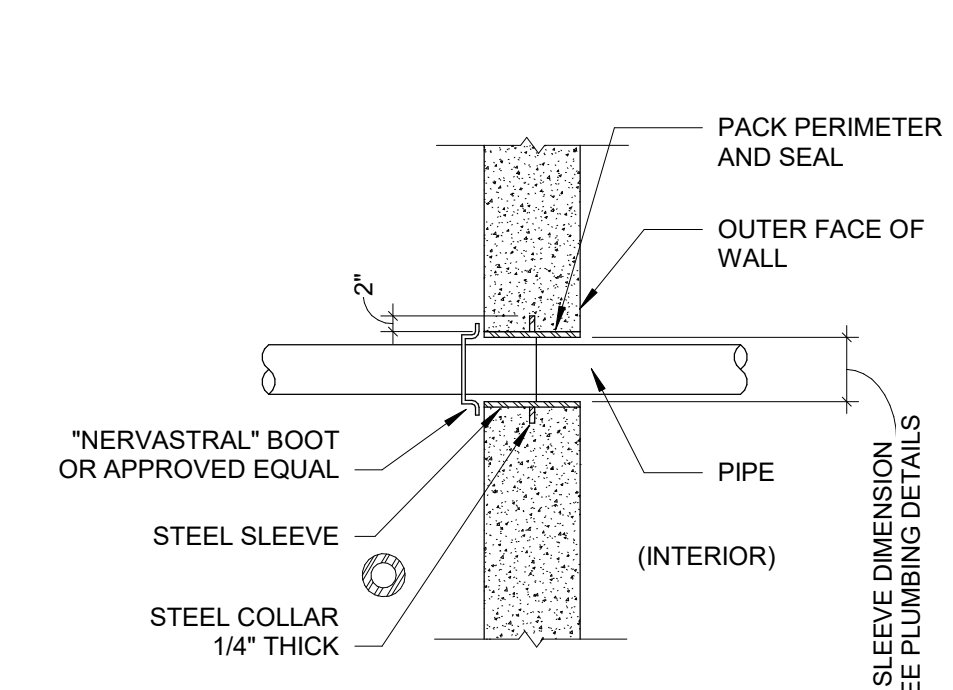
1 TYPICAL FOOTING PENETRATION
SCALE: NONE



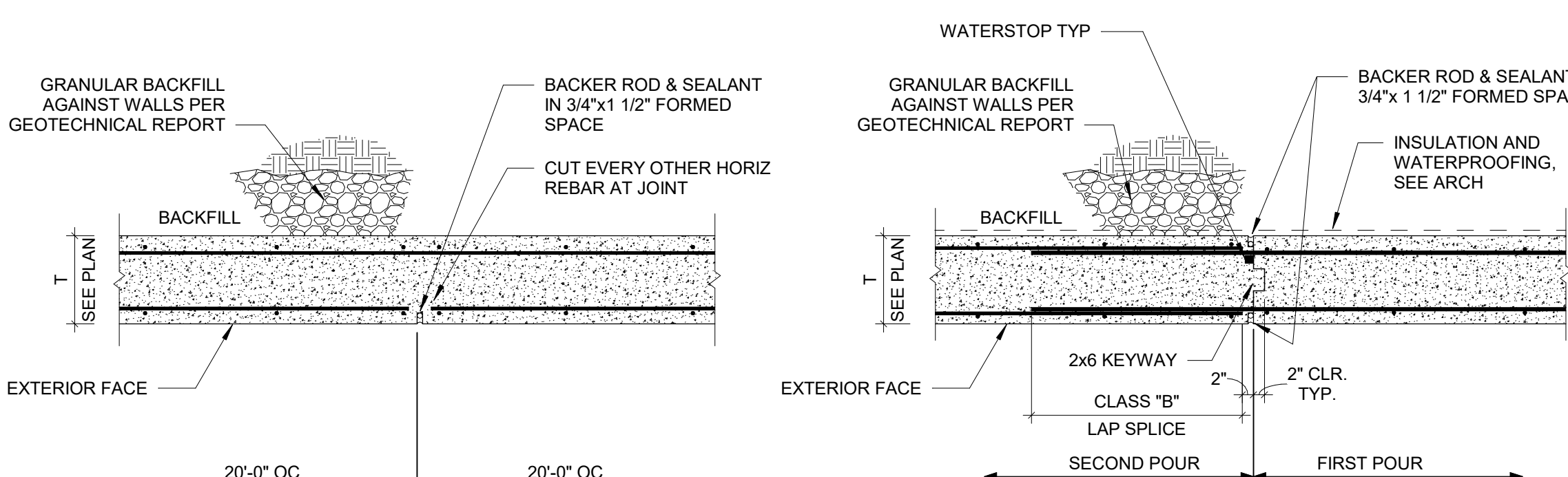
2 TYPICAL FOOTING STEP DETAIL
SCALE: NONE



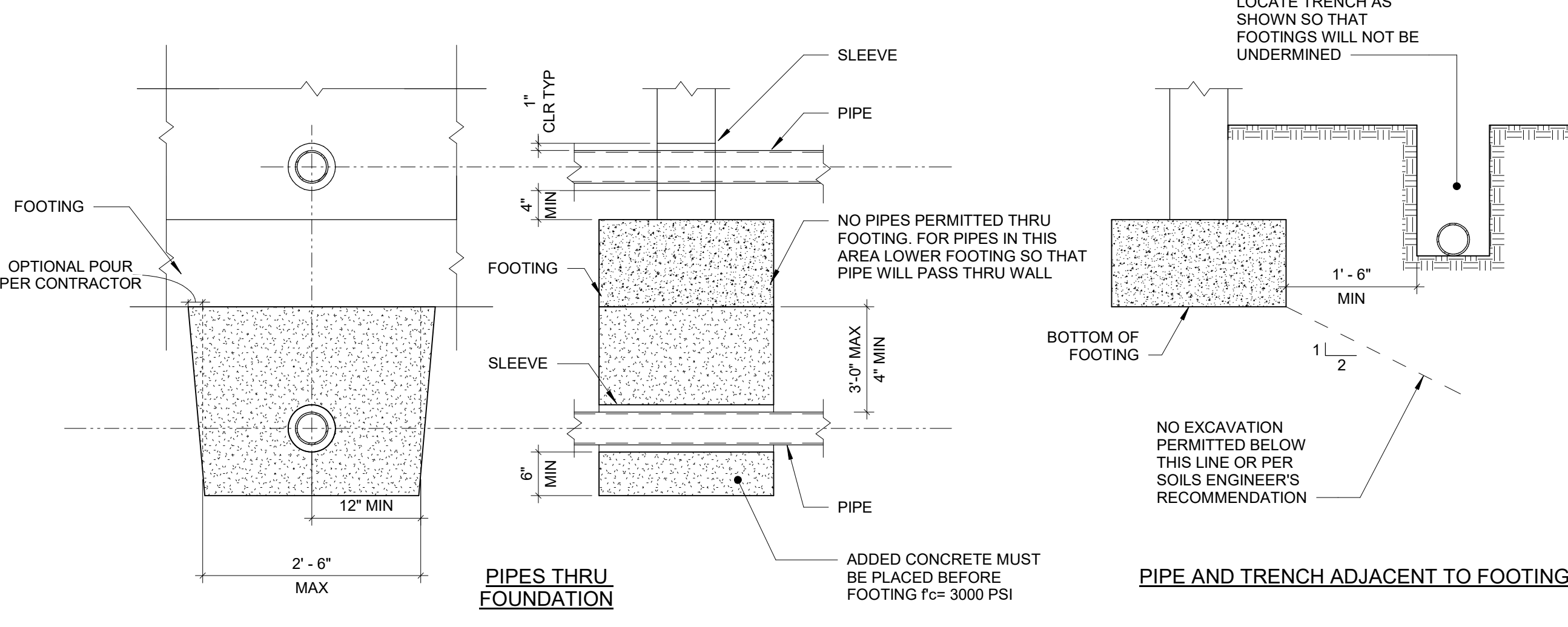
3 TYPICAL CONCRETE WALL CONSTRUCTION DETAILS
SCALE: NONE



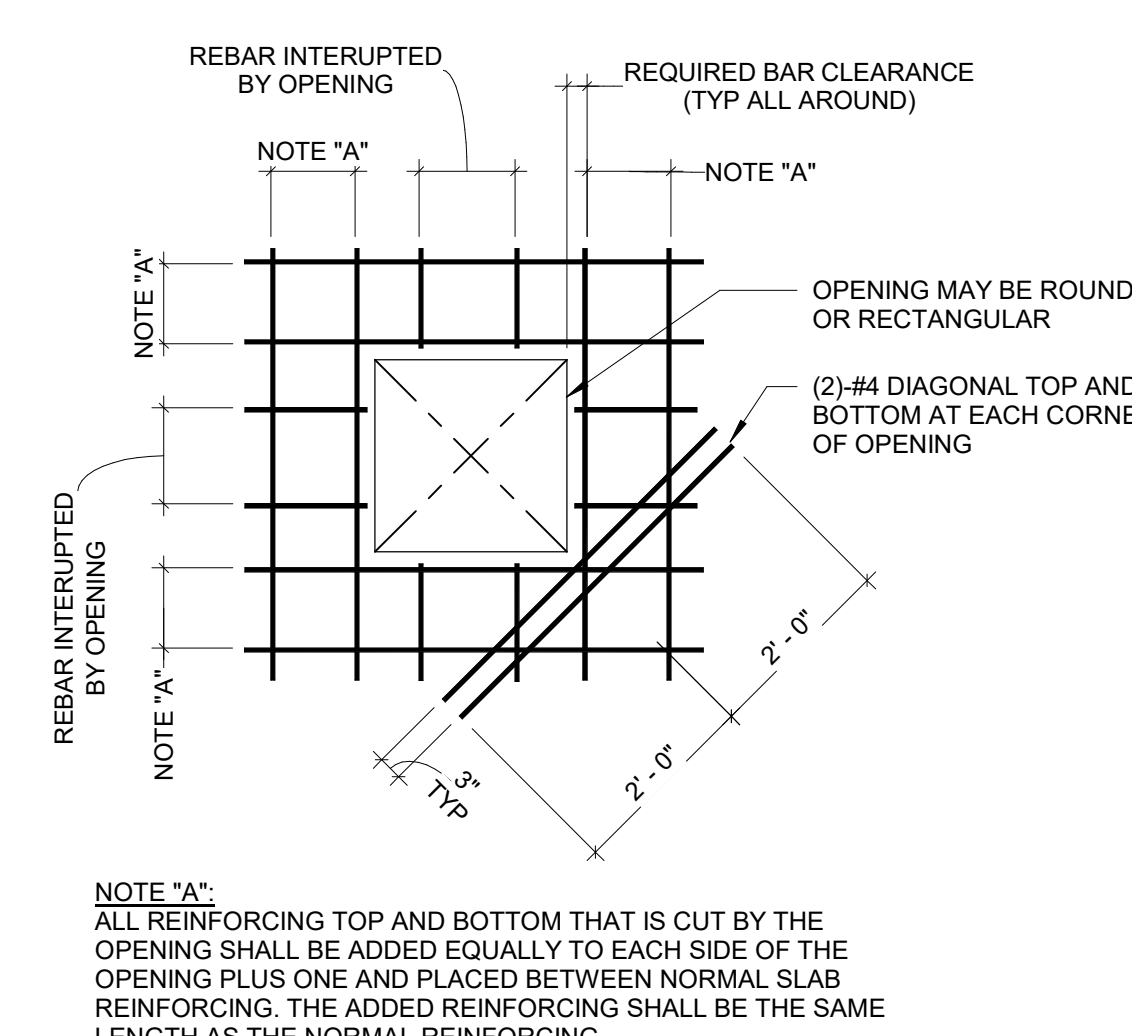
4 TYPICAL CONCRETE WALL CONSTRUCTION DETAILS
SCALE: NONE



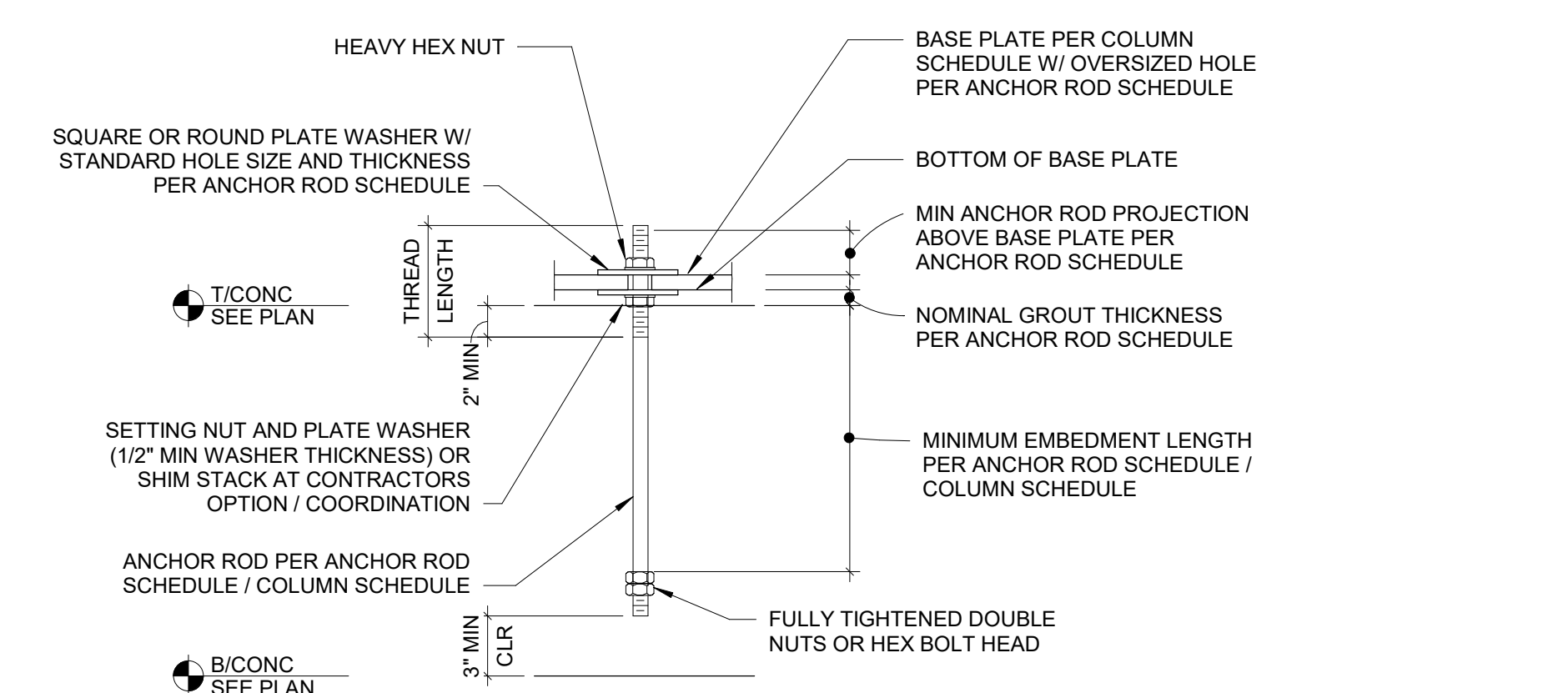
5 TYPICAL CONCRETE WALL JOINT DETAILS
SCALE: NONE



6 TYPICAL UTILITY PIPE THRU/ADJACENT TO FOUNDATION
SCALE: NONE

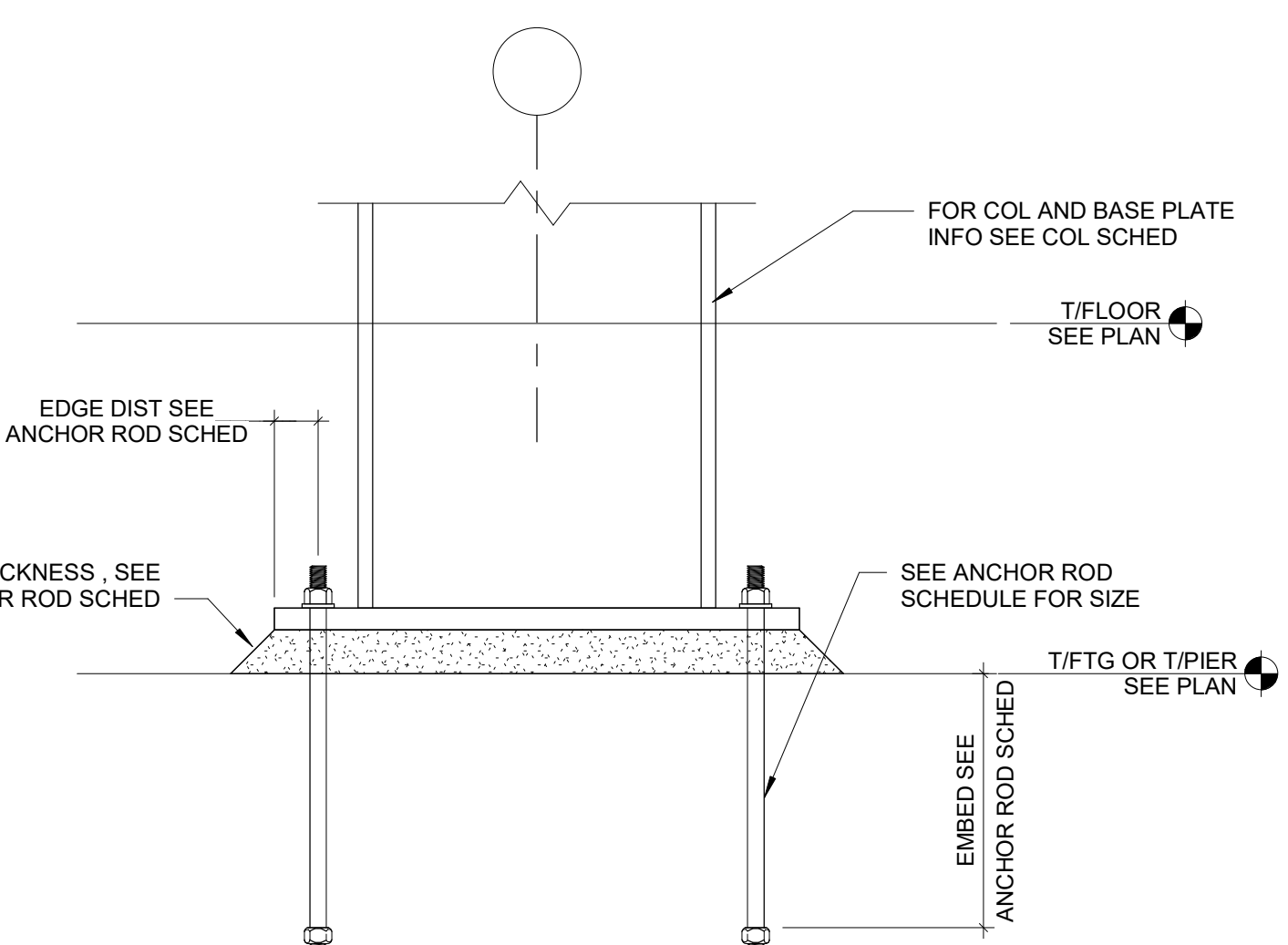


7 TYPICAL REINFORCING AROUND OPENING IN CONC SLAB/WALL
SCALE: NONE

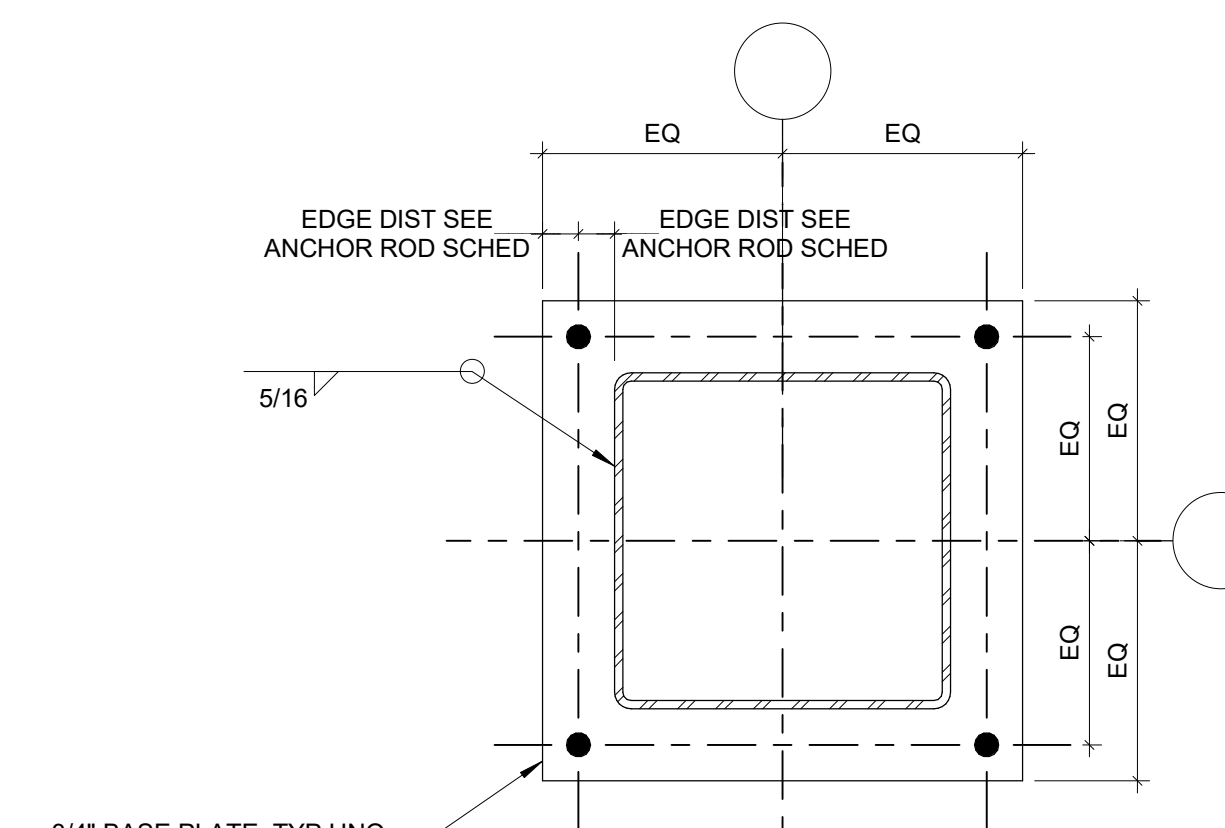


ANCHOR ROD SCHEDULE							
ANCHOR ROD DIAMETER (IN)	BASE PLATE HOLE DIA (IN)	MIN WASHER SIZE (IN)	MIN WASHER THICKNESS (IN)	MIN PROJ ABOVE BASE PLATE (IN)	NOM GROUT THICKNESS (IN)	EDGE DISTANCE (IN)	EMBEDMENT
3/4	1 5/16	2	1/4	3	2	1 1/2	7"
1	1 13/16	3	3/8	3 1/2	2	2	10"

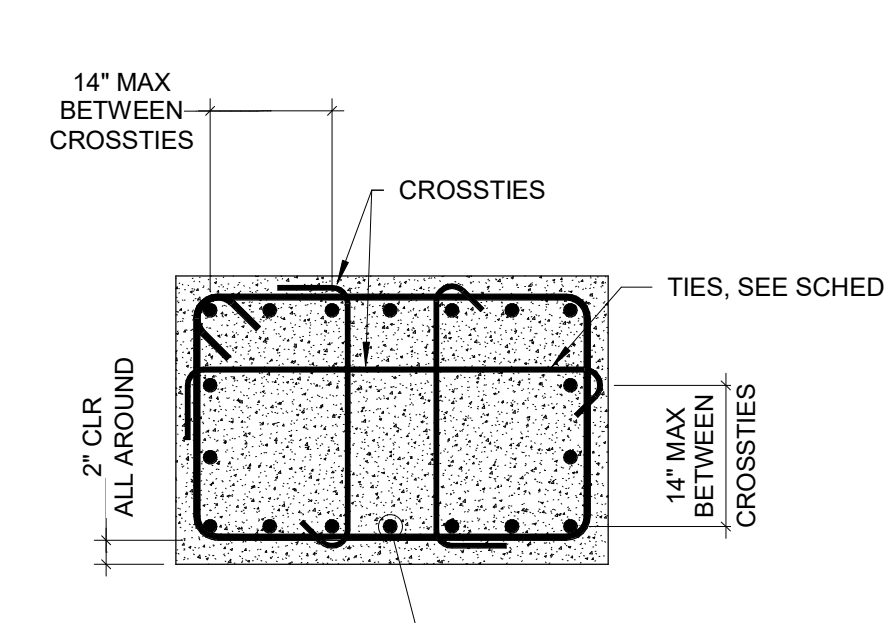
8 TYPICAL ANCHOR ROD DETAIL AND SCHEDULE
SCALE: 1 1/2" = 1'-0"



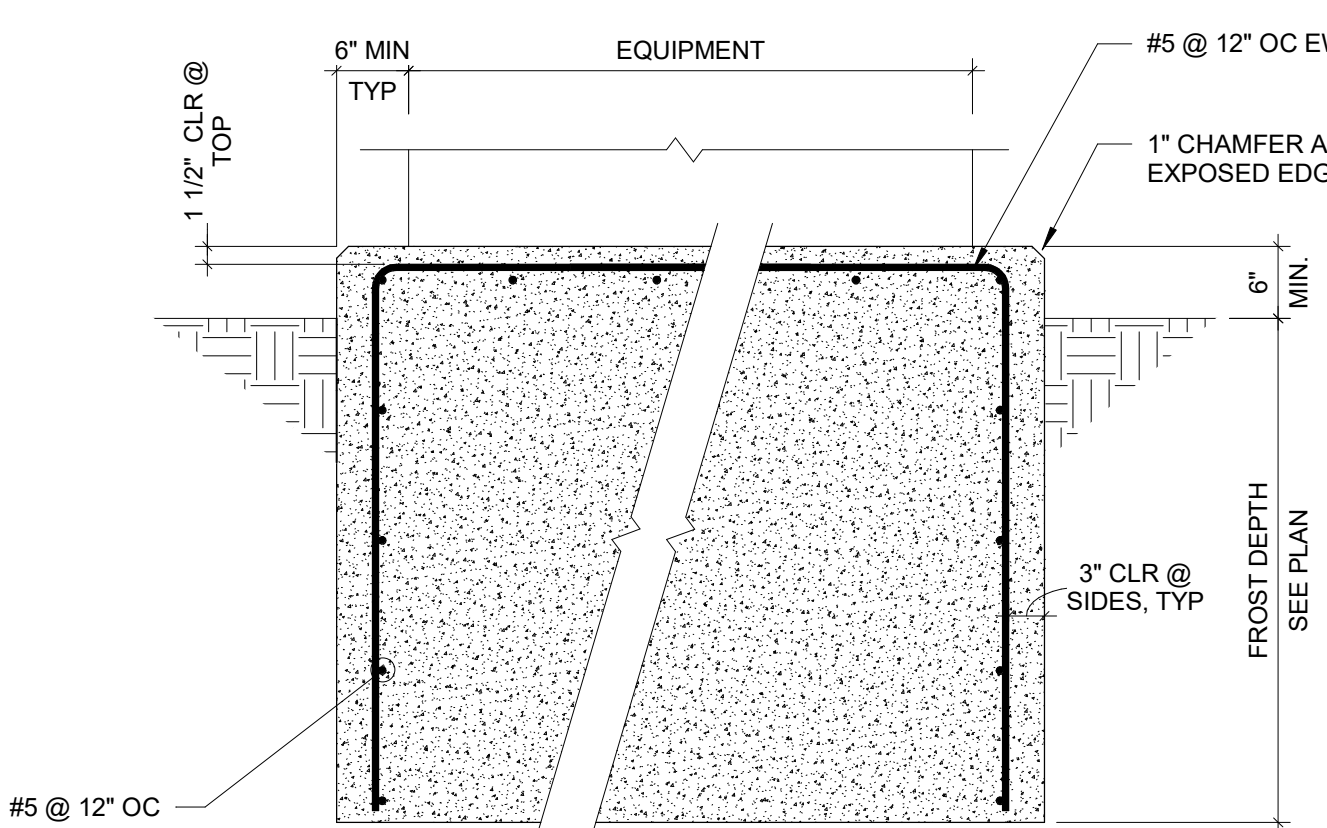
9 TYPICAL COLUMN BASE DETAIL
SCALE: 1 1/2" = 1'-0"



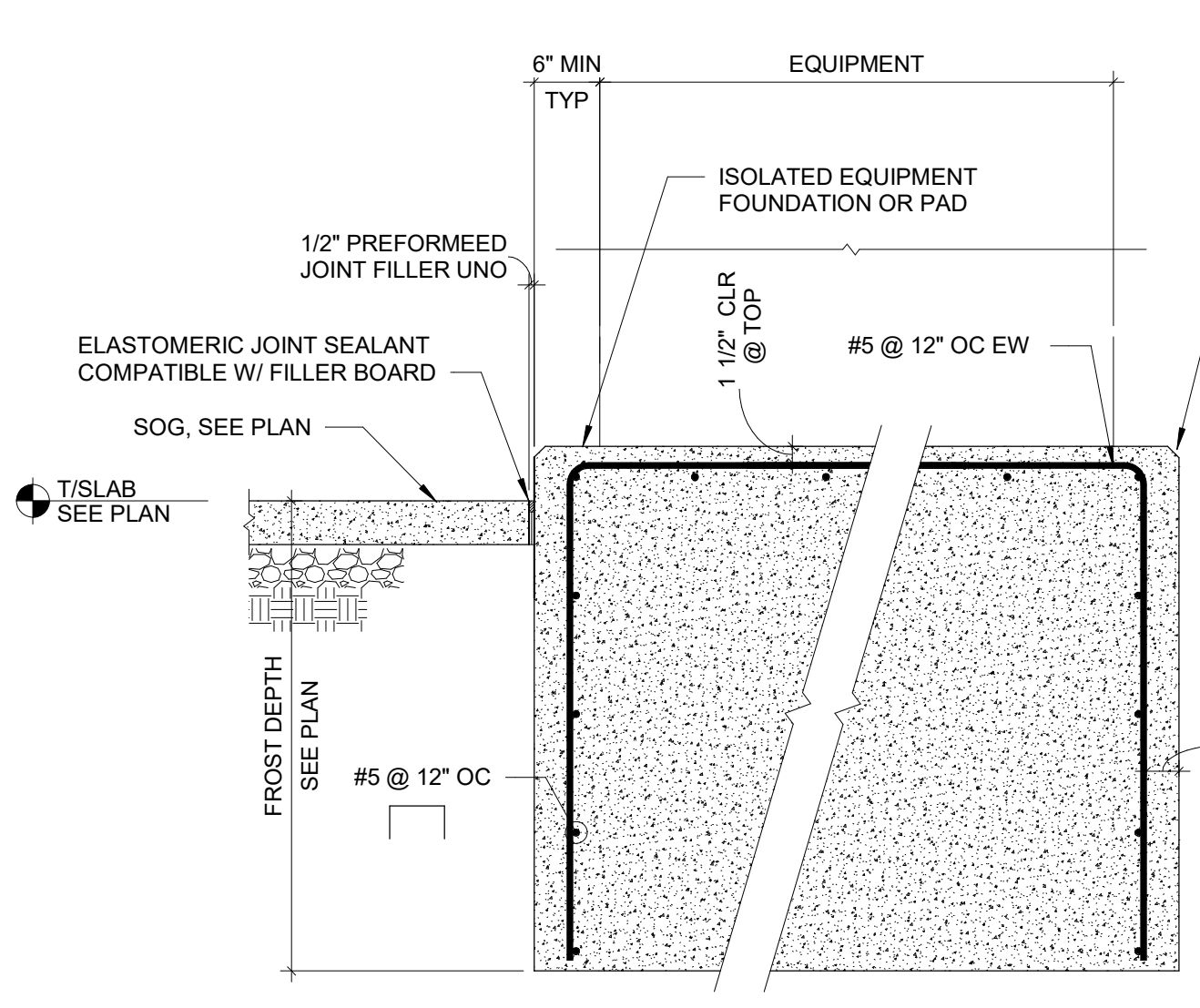
10 BASE PLATE DETAILS
SCALE: 1 1/2" = 1'-0"



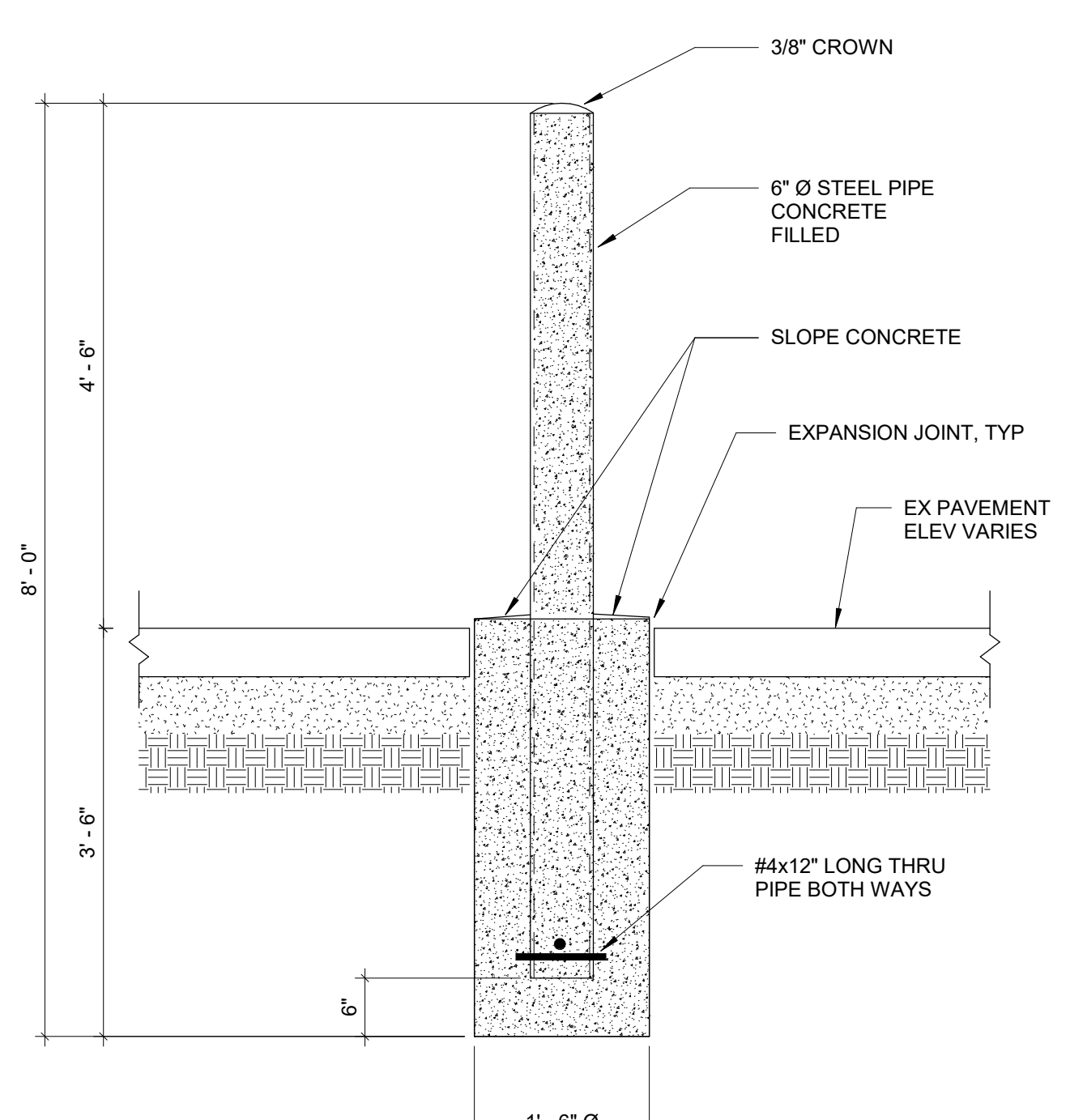
11 RECTANGULAR COLUMN/PIER
SCALE: 3/4" = 1'-0"



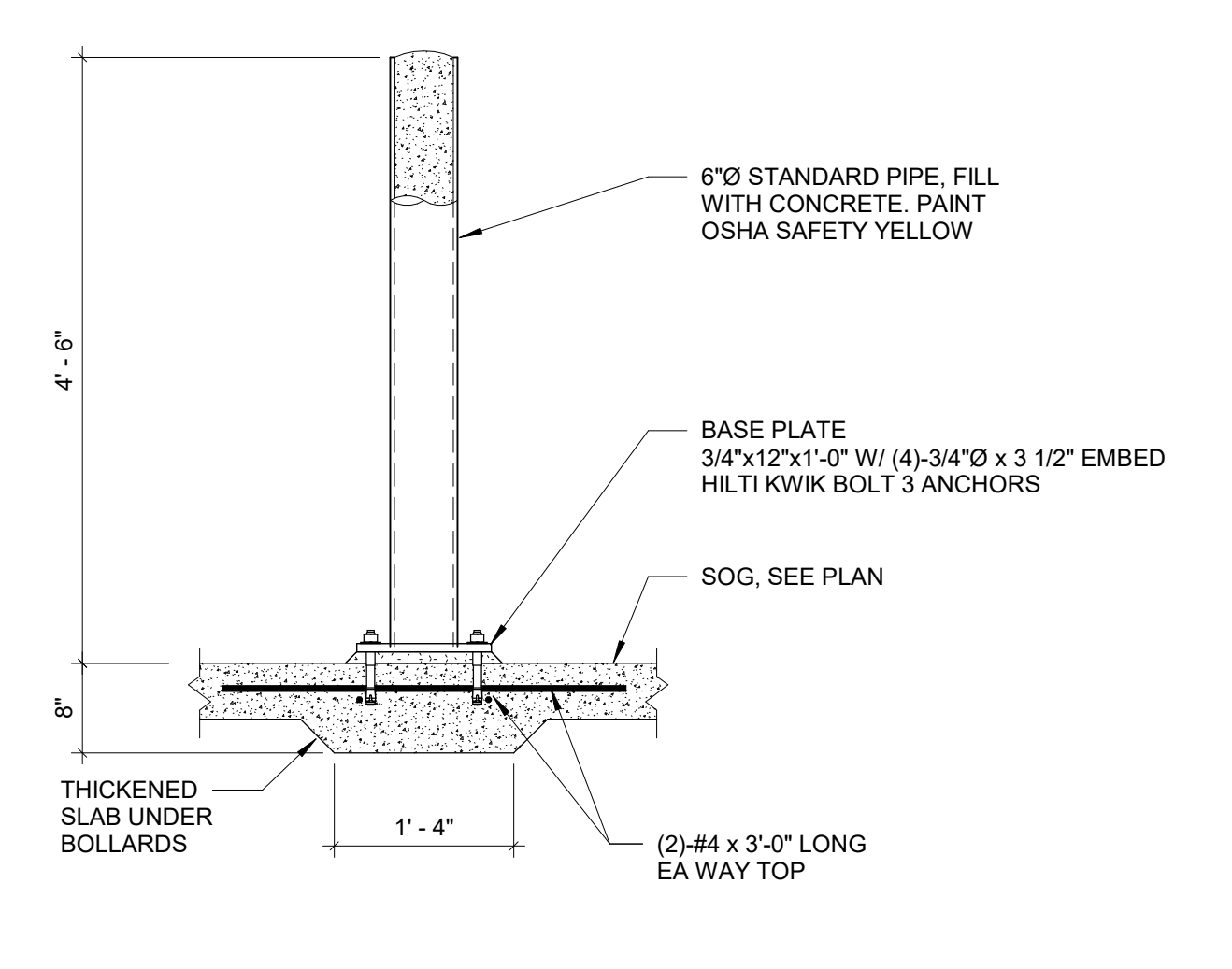
12 TYPICAL OUTDOOR EQUIPMENT PAD
SCALE: 3/4" = 1'-0"



13 ISOLATED EQUIPMENT PAD DETAIL
SCALE: 3/4" = 1'-0"



14 TYPICAL EXTERIOR BOLLARD DETAIL
SCALE: 3/4" = 1'-0"



15 TYPICAL INTERIOR BOLLARD DETAIL
SCALE: 3/4" = 1'-0"