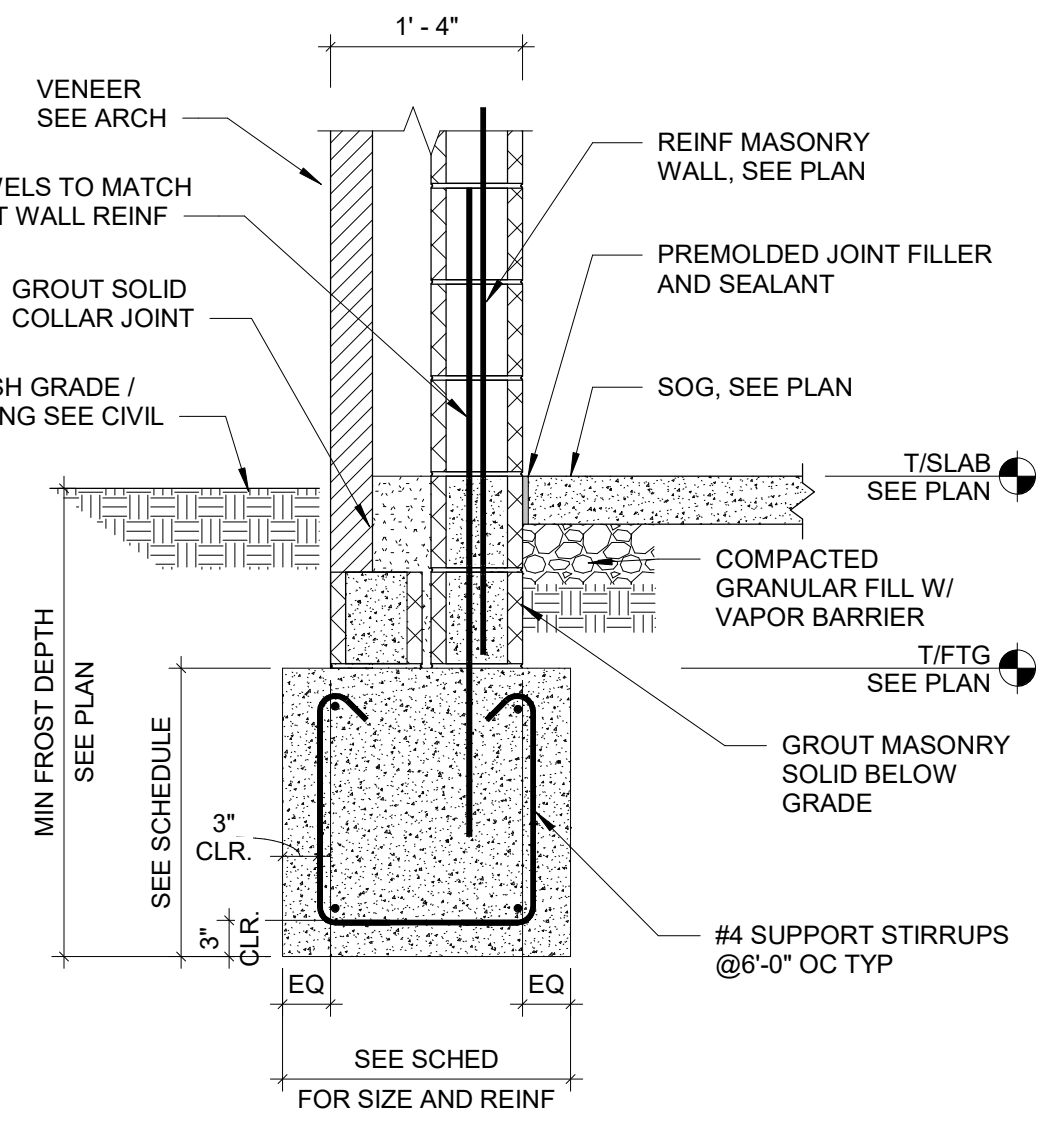
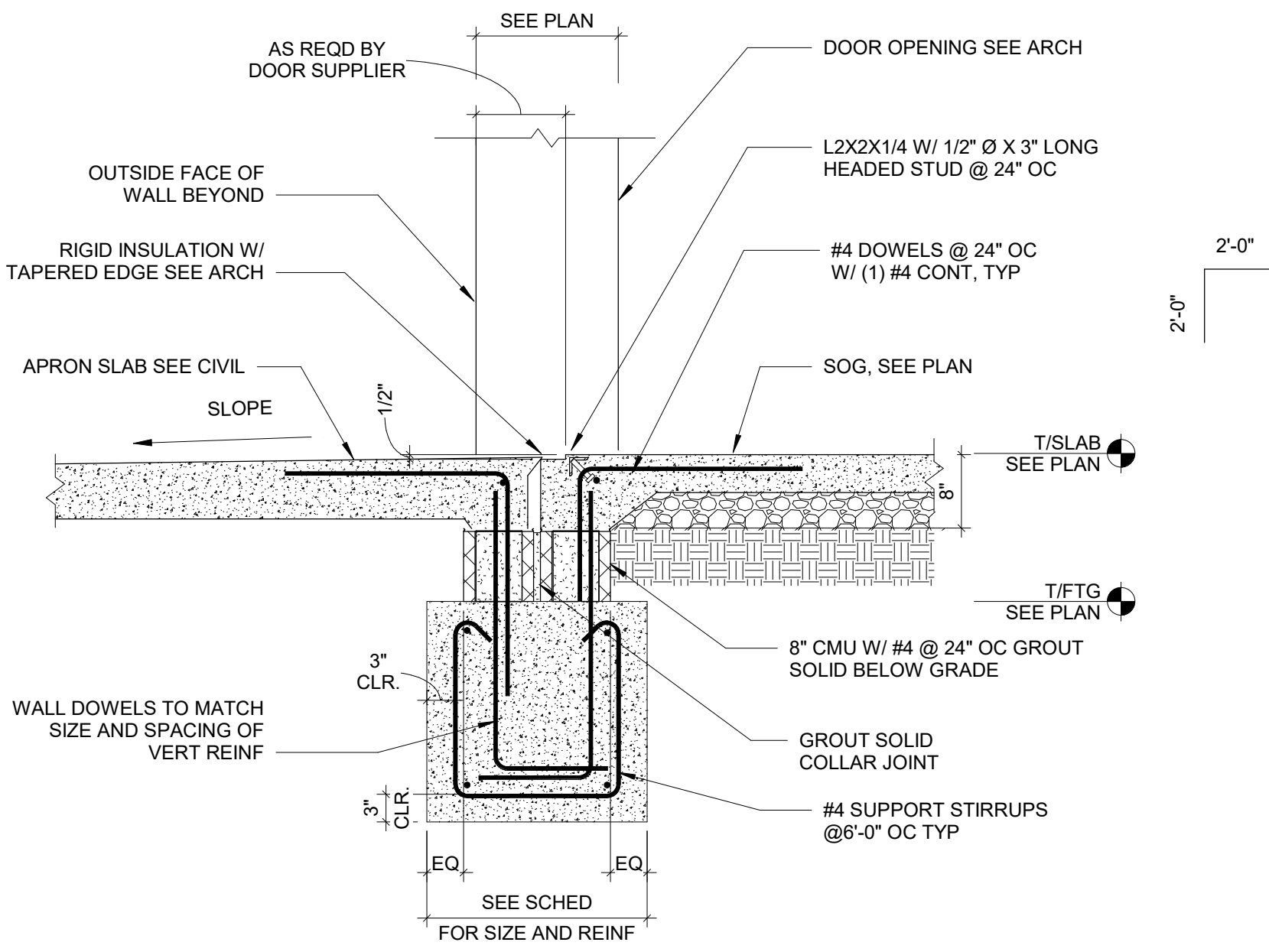


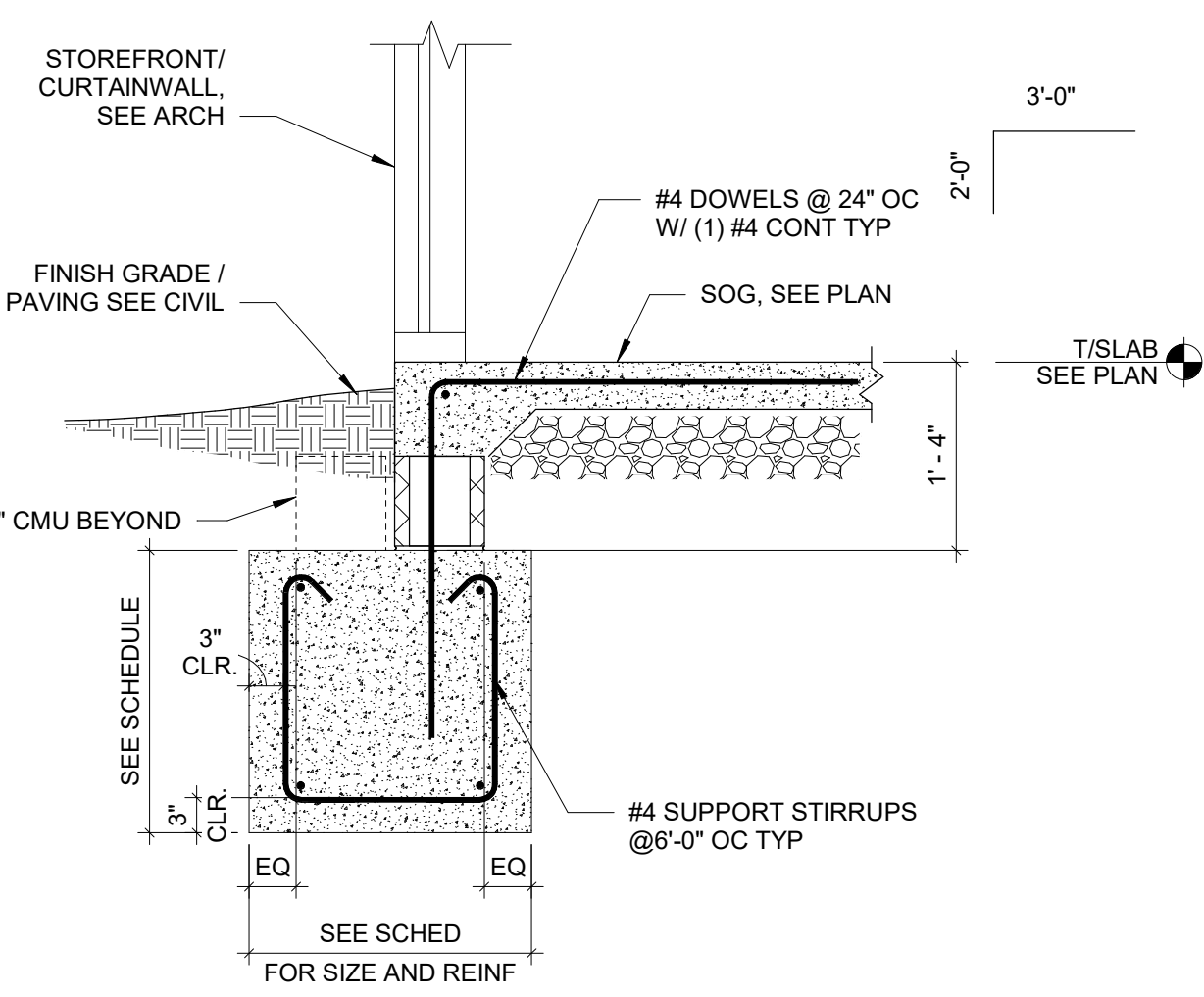
1 TYPICAL FROST SLAB  
SCALE: 3/4" = 1'-0"



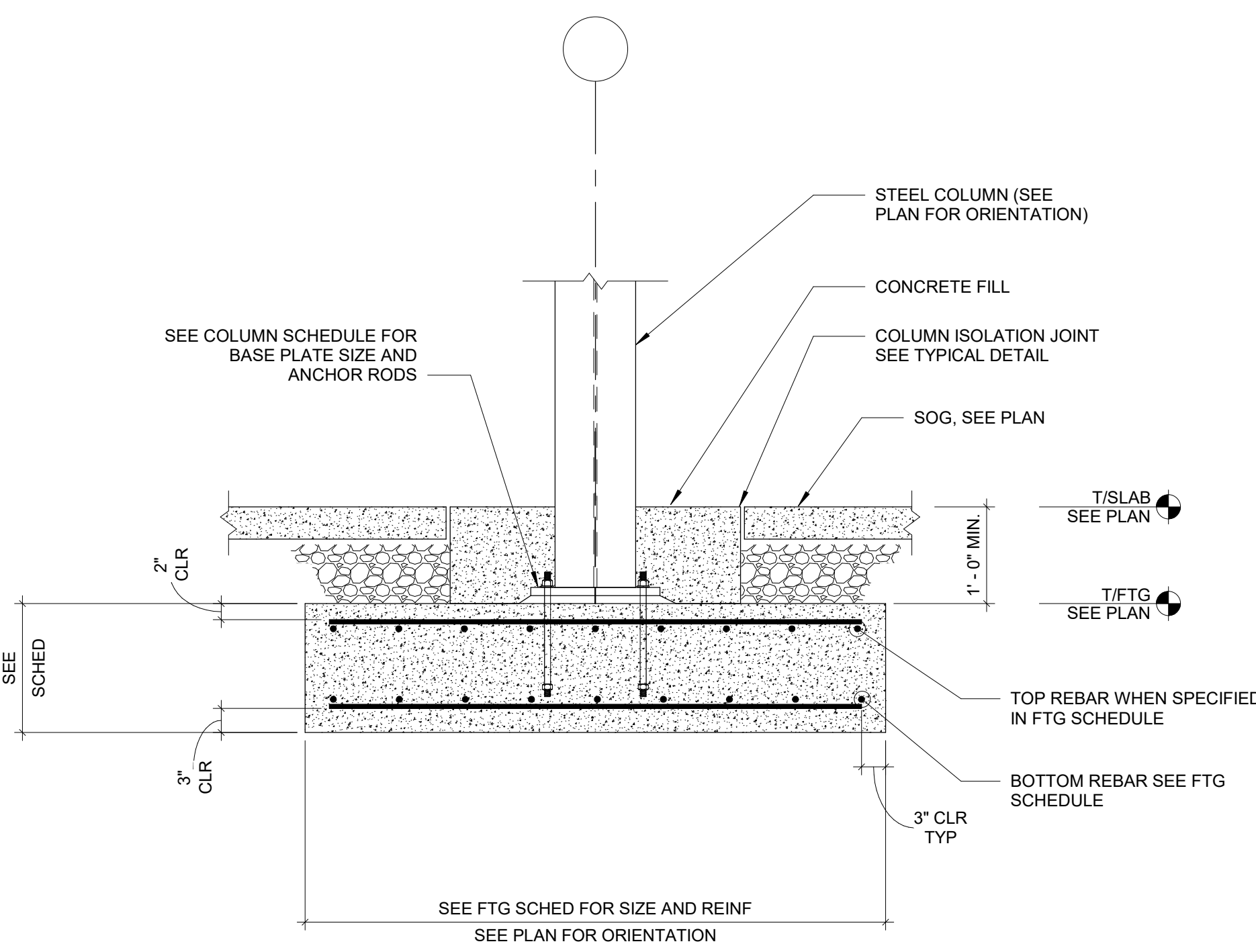
2 TYPICAL EXTERIOR WALL TRENCH FOOTING  
SCALE: 3/4" = 1'-0"



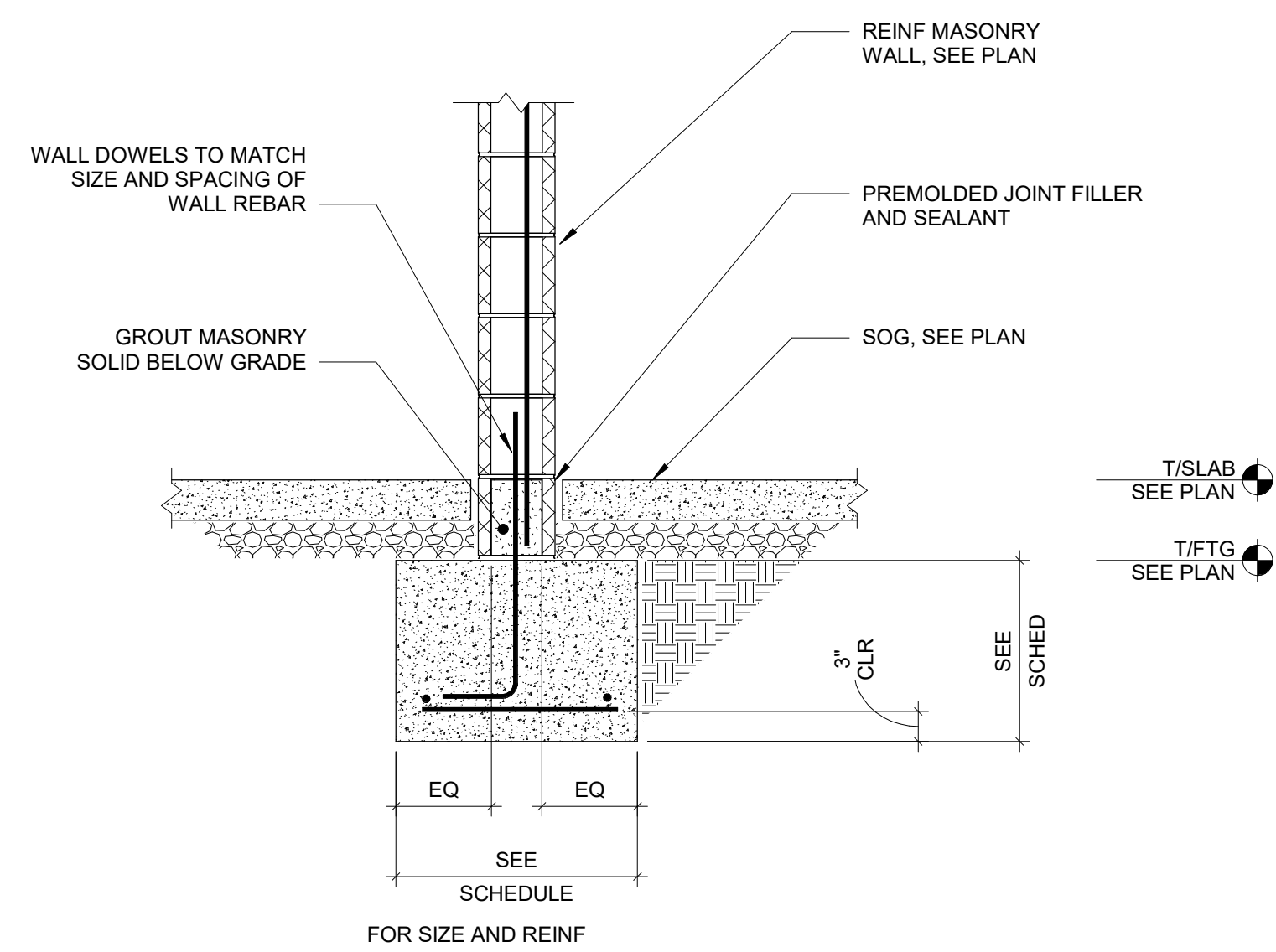
3 TYPICAL OVERHEAD DOOR THRESHOLD DETAIL  
SCALE: NONE



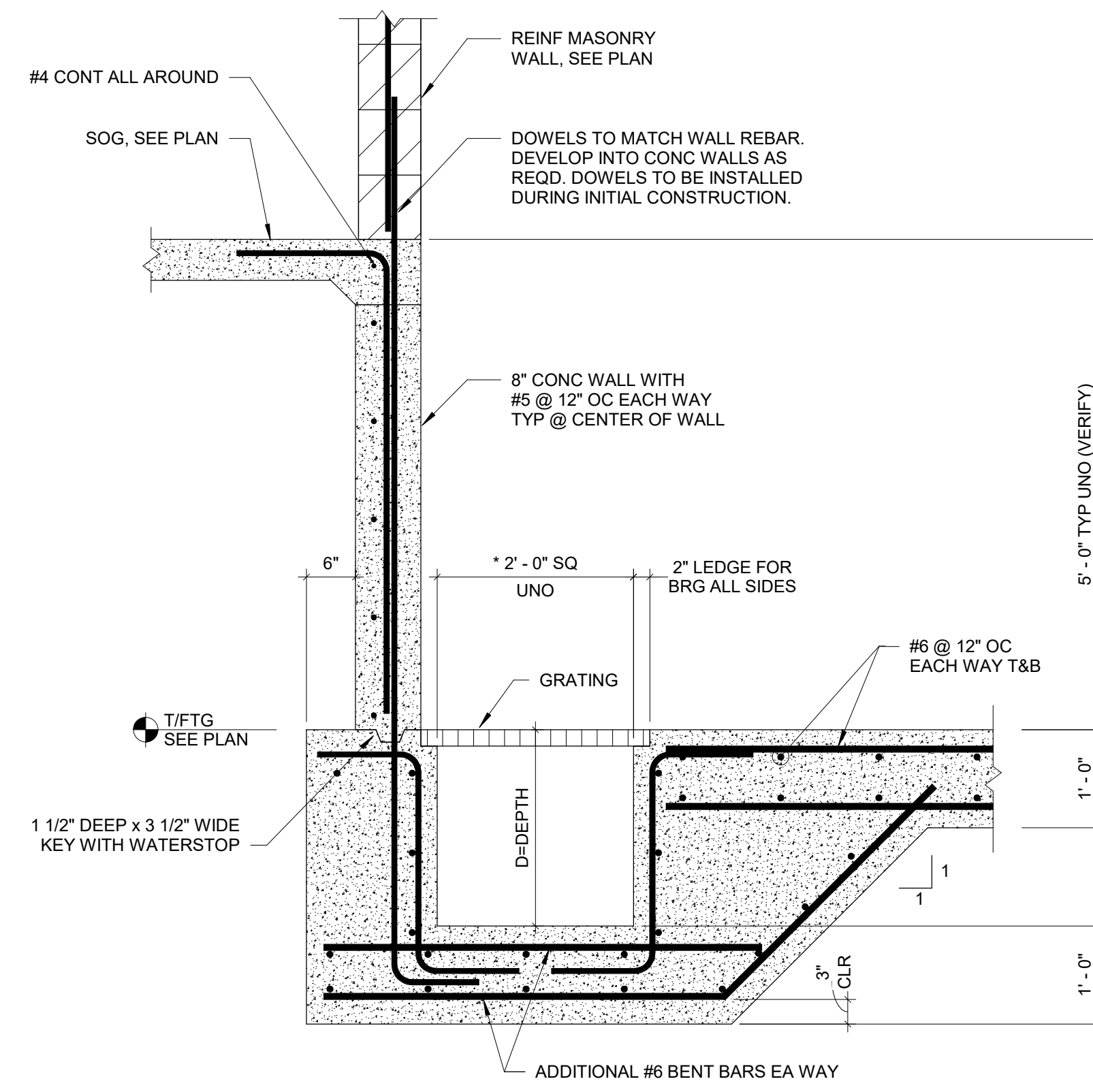
4 TRENCH FOOTING AT STOREFRONT  
SCALE: 3/4" = 1'-0"



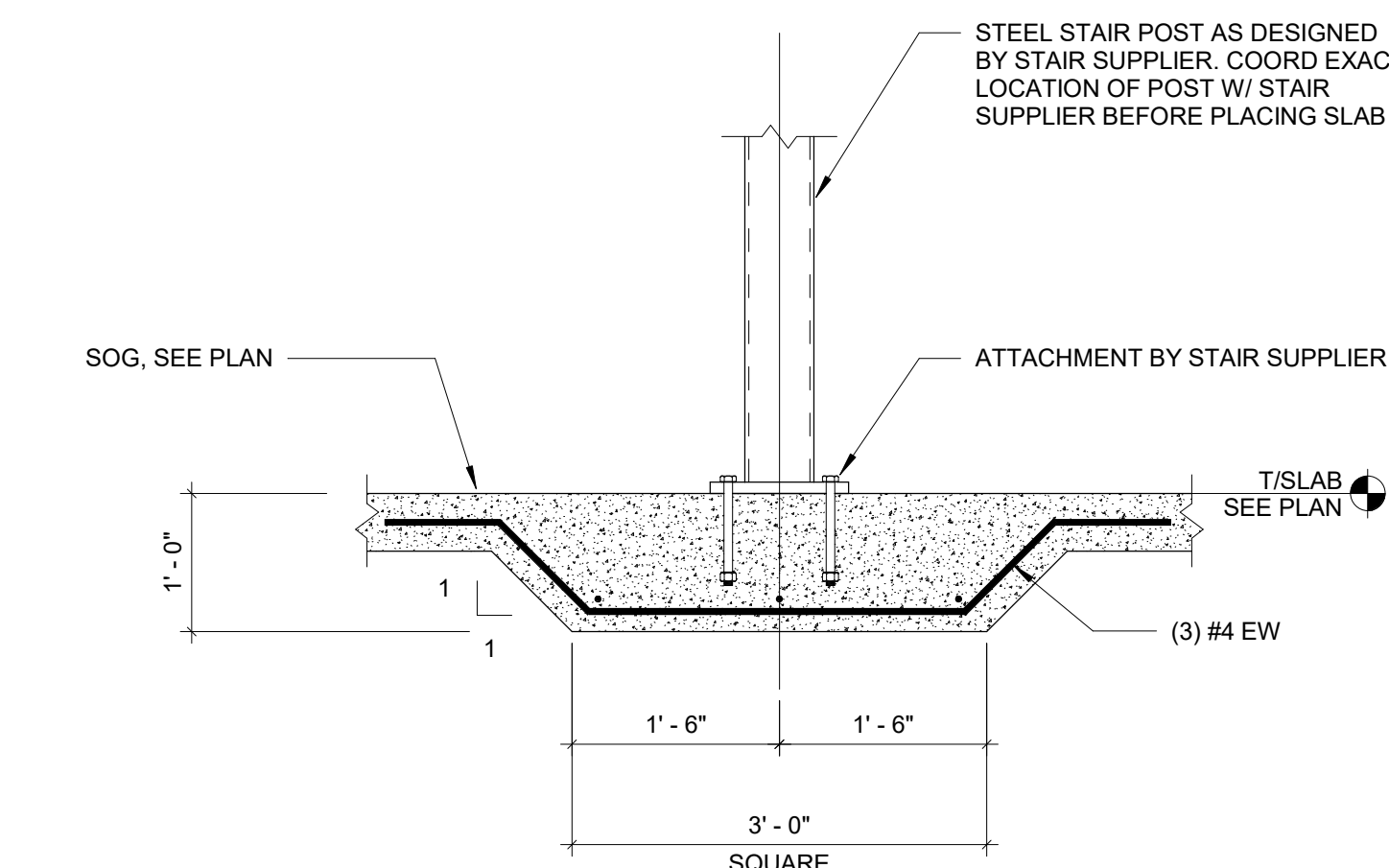
5 TYPICAL INTERIOR SPREAD FOOTING W/O PIER DETAIL  
SCALE: NONE



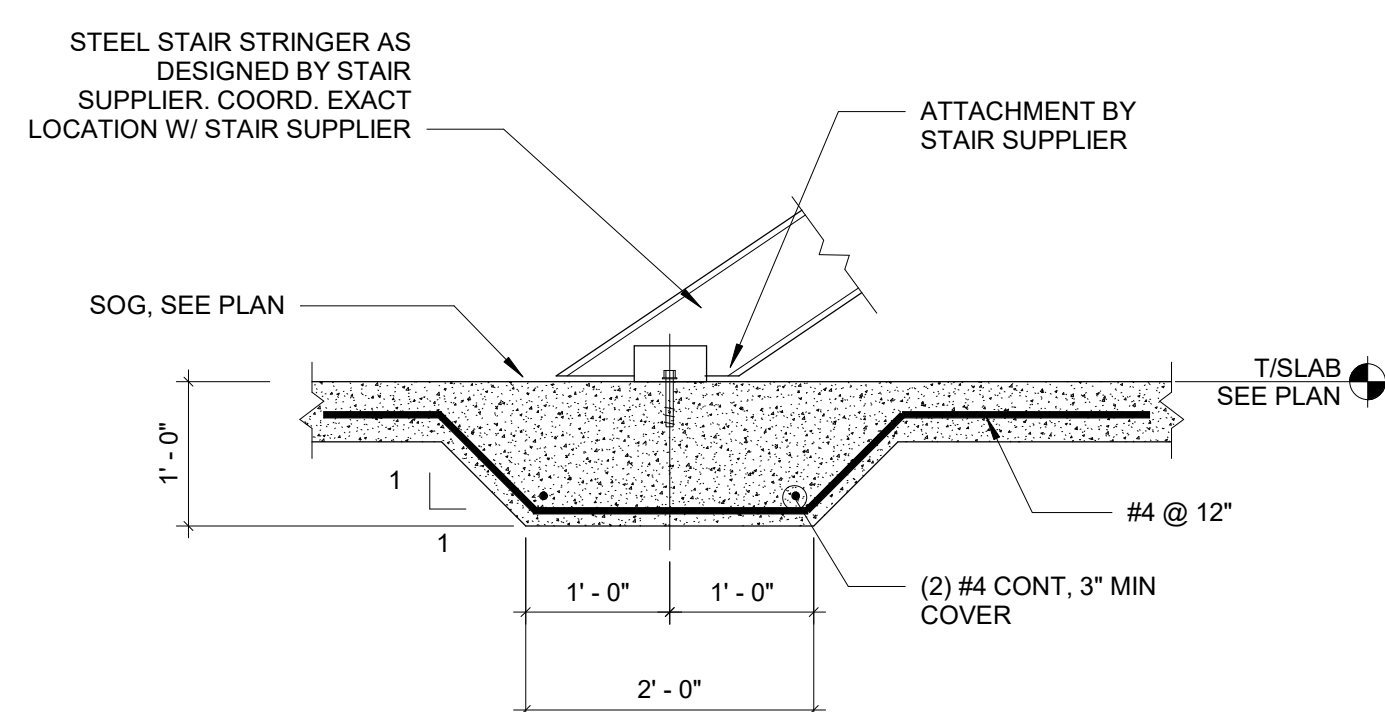
6 TYPICAL INTERIOR CMU WALL  
FOOTING DETAIL  
SCALE: NONE



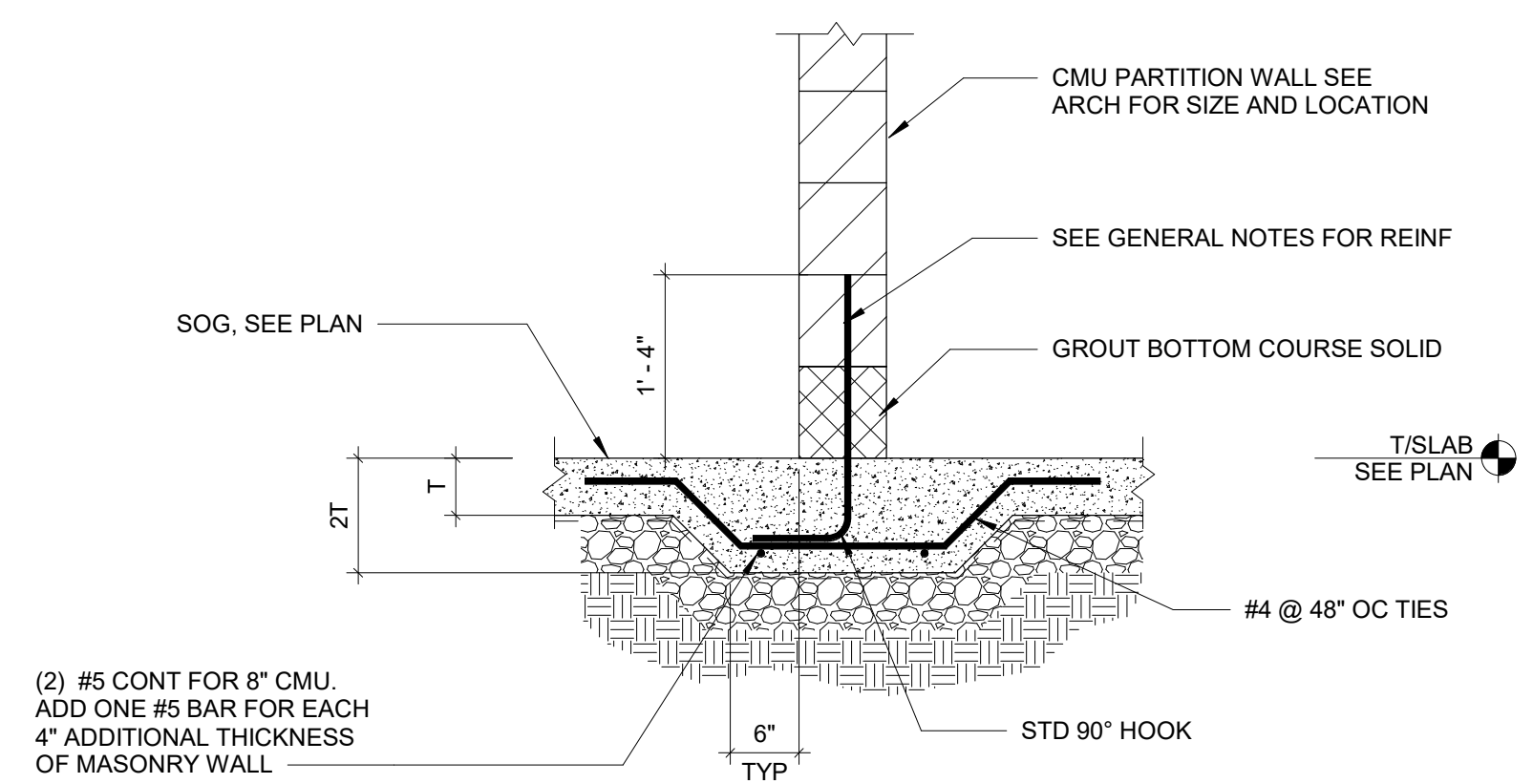
7 TYPICAL ELEVATOR PIT SECTION W/ SUMP DETAIL  
SCALE: 3/4" = 1'-0"



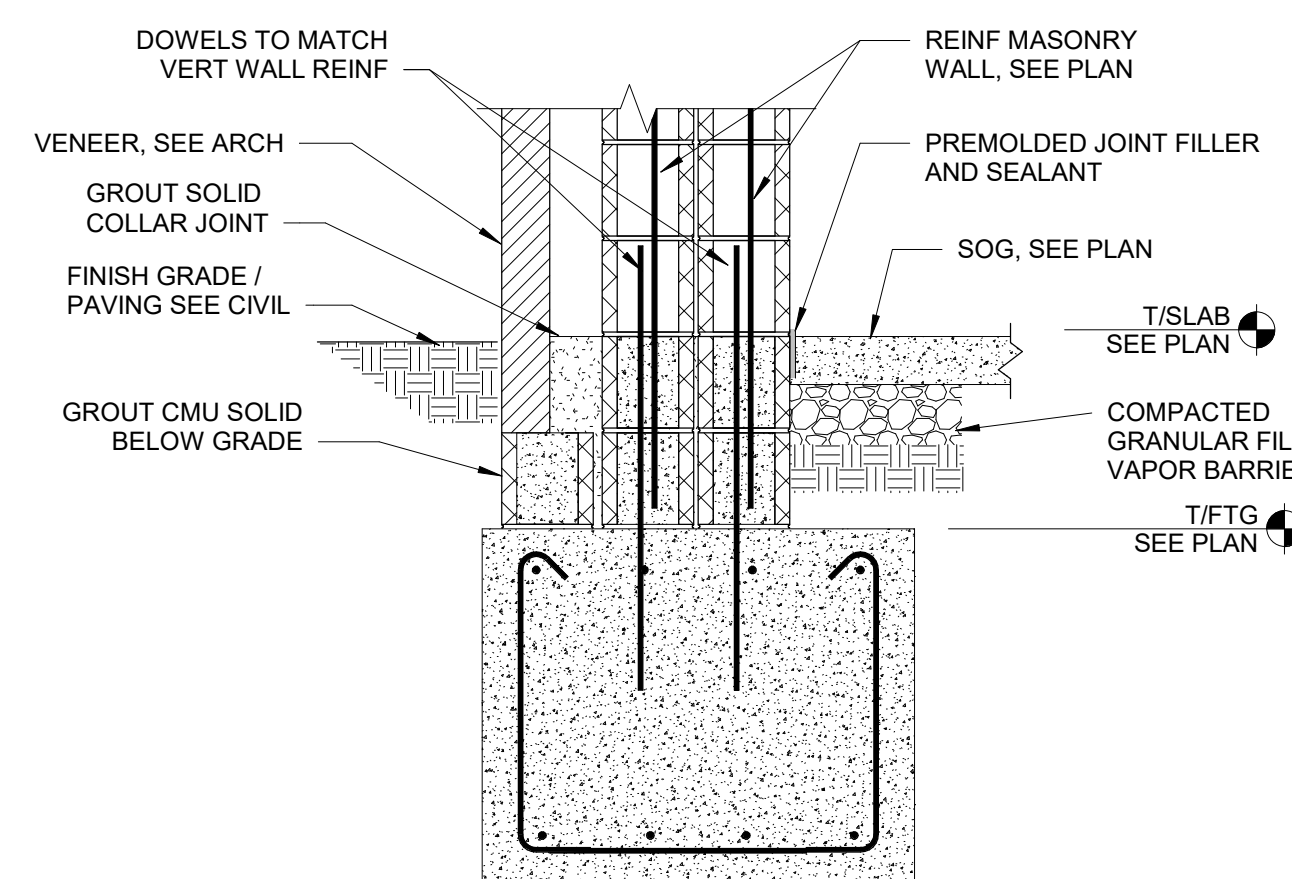
8 TYPICAL STAIR POST SUPPORT  
SCALE: 3/4" = 1'-0"



9 TYPICAL STAIR STRINGER SUPPORT  
SCALE: 3/4" = 1'-0"



10 TYPICAL THICKENED SLAB DETAIL UNDER NON-BEARING CMU WALL  
SCALE: 3/4" = 1'-0"



12 TYPICAL EXTERIOR WALL PIER  
SCALE: 3/4" = 1'-0"

PROJECT NO  
2203-1

ARCHITECTURAL VISION GROUP, LTD  
PLANNERS  
ARCHITECTS  
23850 SPERRY DRIVE  
CLEVELAND, OHIO 44145

STATE OF OHIO  
MICHAEL G. LINDAWAN  
FE.82391  
REGISTERED  
PROFESSIONAL ENGINEER

OSBORN  
ENGINEERING  
1100 Superior Avenue, Suite 200, Cleveland, OH 44114  
(216) 881-2222  
www.osborn-eng.com

MASSILLON CITY SCHOOL  
MASSILLON WEST ELEMENTARY  
PK-3  
250 29TH STREET NW, MASSILLON, OHIO 44646  
MASSILLON CITY SCHOOL DISTRICT

PROJECT NO  
2203-1  
DRAWN BY  
CEC  
CHECKED BY  
CEC  
DATE

ISSUED AS:  
MARK  
DATE  
ISSUED AS:

TYPICAL  
FOUNDATION  
DETAILS

SCALE: 3/4" = 1'-0"  
SHEET NO  
S-302