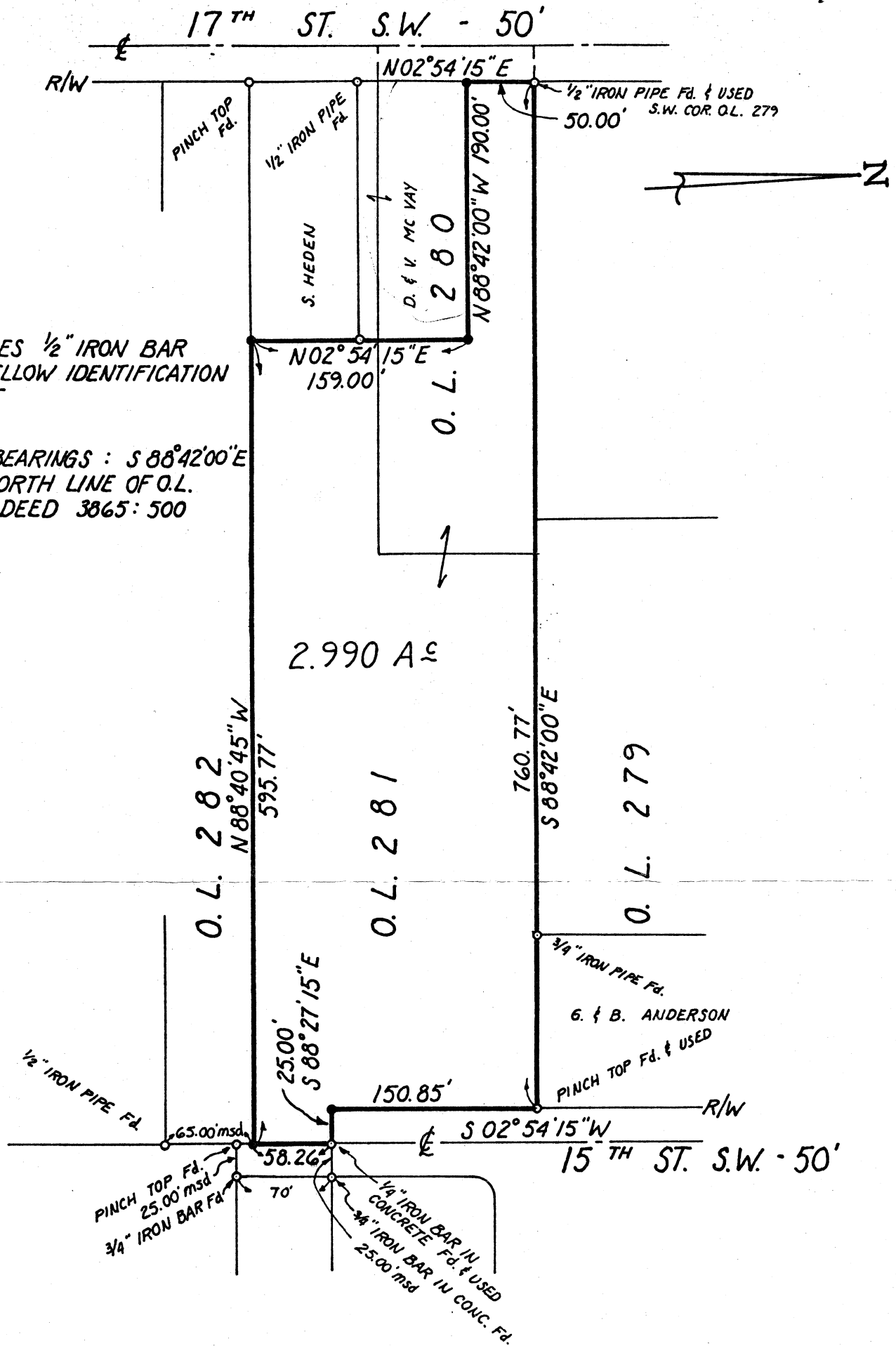


1097



• INDICATES 1/2" IRON BAR WITH YELLOW IDENTIFICATION CAP SET

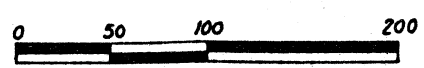
BASIS OF BEARINGS : S 88°42'00"E ON THE NORTH LINE OF O.L. 281 PER DEED 3865:500

2.990 A±

MAP OF SURVEY

I hereby certify that this is a correct survey made by me of A 2.990 ACRE TRACT KNOWN AS BEING PART OF OUT LOTS 280 & 281 IN THE CITY OF MASSILLON, STARK COUNTY, OHIO.

This certification made by me this 25TH day of JUNE 19 83



SCALE: 1 INCH = 100 FEET

Bruce D. Conery
Bruce D. Conery, P.S. 6499

BUCKEYE SURVEYING SERVICES, INC.
Suite 100 — Colorado Bldg.
4916 Spruce Hill Dr., N.W.
Canton, Ohio 44718

BUCKEYE SURVEYING SERVICES, INC.

Suite 100 — Colorado Bldg.
4916 Spruce Hill Dr., N.W.
Canton, Ohio 44718

President
Bruce D. Conery, P.S.

Phone
(216) 499-0163

June 25, 1983

Description of a 2.990 Acre Tract

Situated in the City of Massillon, County of Stark and State of Ohio and known as being part of Out Lots 280 and 281 more fully bounded and described as follows, to-wit;

Beginning at a 1/2 inch iron pipe found at the southwest corner of Out Lot 279 in said City of Massillon, said iron pipe being the true place of beginning for the tract of land herein described;

1. Thence S88°42'00"E along the south line of said Out Lot 279 a distance of 760.77 feet to a pinch top pipe found on the west line of 15th St. S.W. a 50 foot public right-of-way, said pipe being at the southeast corner of a tract of land now or formerly owned by G. & B. Anderson;
2. Thence S02°54'15"W along the west line of said 15th St. S.W. a distance of 150.85 feet to a 1/2 inch iron bar set;
3. Thence S88°27'15"E a distance of 25.00 feet to a 1/4 inch iron bar in concrete found on the east line of said Out Lot 281
4. Thence S02°54'15"W along the east line of said Out Lot 281 a distance of 58.26 feet to a 1/2 inch iron bar set at the northeast corner of Out Lot 282
5. Thence N88°40'45"W along the north line of said Out Lot 282 a distance of 595.77 feet to a 1/2 inch iron bar set at the southeast corner of a tract of land now or formerly owned by S. Heden;
6. Thence N02°54'15"E along the east line of said Heden tract and the east line of a tract of land now or formerly owned by D. & B. McVay a distance of 159.00 feet to a 1/2 inch iron bar set at the north east corner of said McVay tract;
7. Thence N88°42'00"W along the north line of said McVay tract a distance of 190.00 feet to a 1/2 inch iron bar set on the east line of 17th St. S.W. a 50 foot public right-of-way;
8. Thence N02°54'15"E along the east line of said 17th St. S.W. a distance of 50.00 feet to the true place of beginning.

The above described tract of land contains 2.990 acres of land as surveyed by Bruce D. Conery, P.S. 6499, of Buckeye Surveying Services, Inc. of Canton, Ohio in June of 1983.

Basis of Bearings: S88°42'00"E on the north line of Out Lot 281.