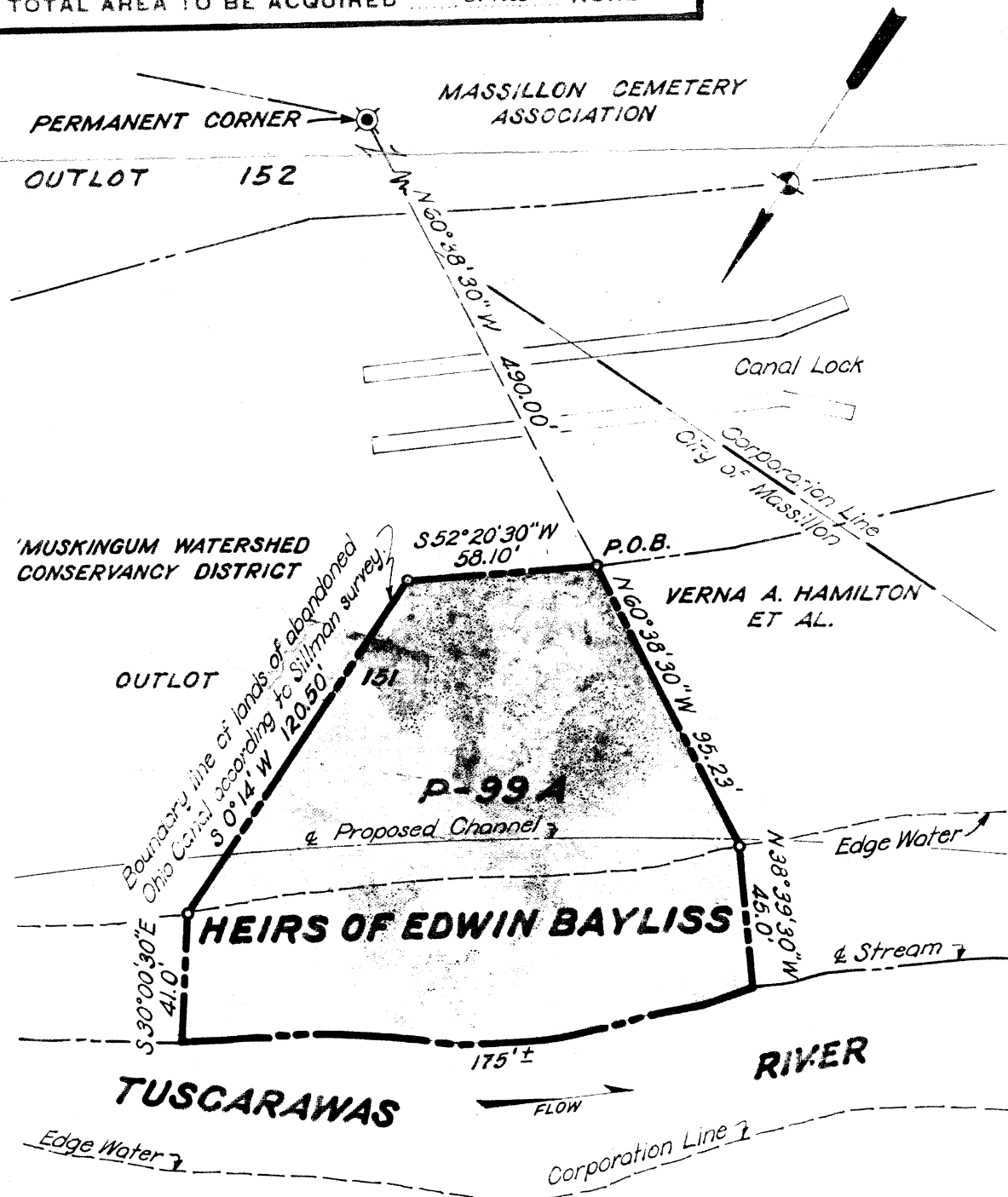


1974

WAR DEPARTMENT

CORPS OF ENGINEERS, U. S. ARMY

TOTAL AREA OF TRACT	0.423	ACRES
TOTAL AREA TO BE ACQUIRED	0.423	ACRES



THE WHEELING AND LAKE ERIE RAILWAY CO.

**TUSCARAWAS RIVER**  
**LOCAL PROTECTION PROJECT**  
**MASSILLON, OHIO**  
 CHANNEL LAND  
**PARCEL NO. 99A**  
 PERRY TWP., STARK CO.  
 SCALE: 1" = 50'  
 U. S. ENGINEER OFFICE, HUNTINGTON, W. VA. OCT. 1940