

SURVEY OF PT. O.L. 516

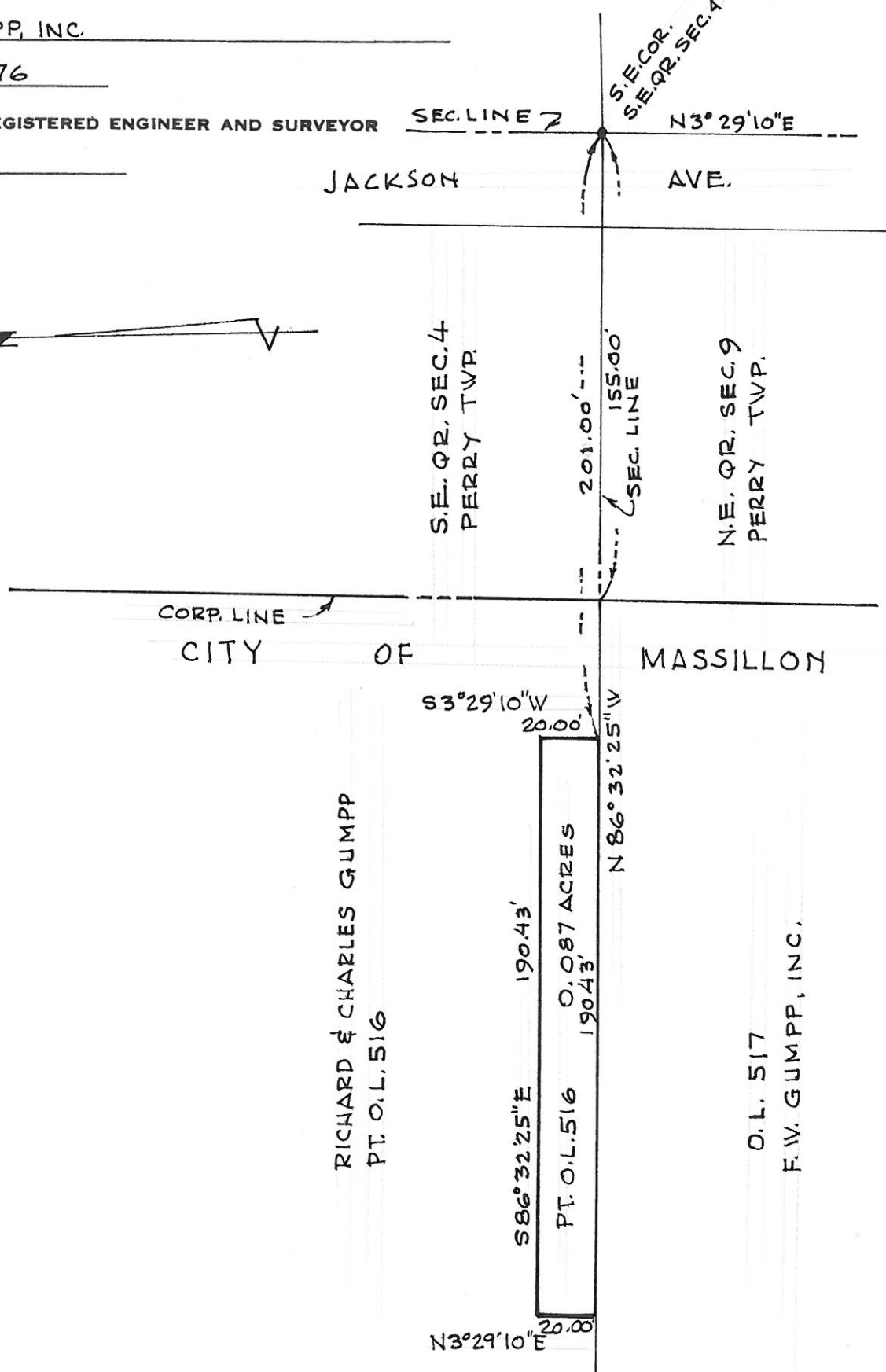
MASSILLON, STARK, OHIO

FOR F.W. GUMPP, INC.

DATE OCT., 1976

BY R.F. WAGONER, REGISTERED ENGINEER AND SURVEYOR

SCALE: 1"=50'



RICHARD & CHARLES GUMPP
PT. O.L. 516

O.L. 517
F.W. GUMPP, INC.

D E S C R I P T I O N

PART O.L. 516

In the City of Massillon

Stark County, Ohio

Known as and being part of O.L. 516 in the City of Massillon, Stark County, Ohio and being more fully described as follows:

Commencing at the southeast corner of the Southeast Quarter of Section 4, Perry Township;

Thence N86°32'25"W along the south line of said Southeast Quarter, a distance of 201.00' to the true place of beginning of the tract herein described;

Thence continuing N86°32'25"W along said south line of said Quarter Section, also being the south line of O.L. 516, a distance of 190.43' to a point;

Thence N3°29'10"E, a distance of 20.00' to a point;

Thence S86°32'25"E, a distance of 190.43' to a point;

Thence S3°29'10"W, a distance of 20.00' to the true place of beginning, containing .087 acres.

A handwritten signature in cursive script is written over a circular notary seal. The seal contains the text "NOTARY PUBLIC" and "STARK COUNTY, OHIO" around a central emblem.

Pt. O. L. 516

Known as and being part of O. L. 516 in the City of Massillon, Stark County, Ohio, and being more fully described as follows:

The true place of beginning being an existing stone monument at the southwest corner of O. L. 516;

Thence N-4⁰-04'-18"-E along the west line of said O. L. 516, a distance of 1003.10' to an iron pin at the northwest corner of said O. L. 516;

Thence S-86⁰-43'-04"-E along the north line of O. L. 516, a distance of 287.69' to a point;

Thence S-26⁰-43'-18"-E, a distance of 243.18' to a point;

Thence on a curve to the left, with a delta of 2⁰-28'-36", a radius of 232.35' and a chord distance of 10.04', bearing S-62⁰-02'-24"-W to a point;

Thence S-29⁰-11'-54"-E, a distance of 153.13' to a point;

Thence S-60⁰-25'-21"-W, a distance of 83.20' to a point;

Thence S-45⁰-57'-50"-W, a distance of 100.00' to a point;

Thence S-22⁰-04'-24"-W, a distance of 251.78' to a point;

Thence S-16⁰-18'-08"-W, a distance of 123.94' to a point;

Thence on a curve to the right, with a delta of 17⁰-43'-28", a radius of 228.84', and a chord distance of 70.53', bearing N-72⁰-13'-24"-W to a point;

Thence S-26⁰-38'-20"-W, a distance of 215.90' to a point on the south line of O. L. 516;

Thence N-86⁰-32'-25"-W along said south line of O. L. 516, a distance of 96.18' to the true place of beginning, containing 7.1550 acres.

Paul J. Chogorin