

DESCRIPTION

PT. O.L. 506

Known as and being part of O.L. 506, the true place of beginning being at the northeast corner of Lot No. 10077;

Thence S87°36'40"E along the south line of Beckman Ave., S.E., a distance of 16.00' to an iron pin at the northwest corner of Lot No. 10078;

Thence S2°31'50"W along the west line of Lot No. 10078, 10079 and 10080, a distance of 135.00' to a point;

Thence N87°36'40"W, a distance of 80.00' to a point;

Thence N33°37'28"W, a distance of 105.09' to a point;

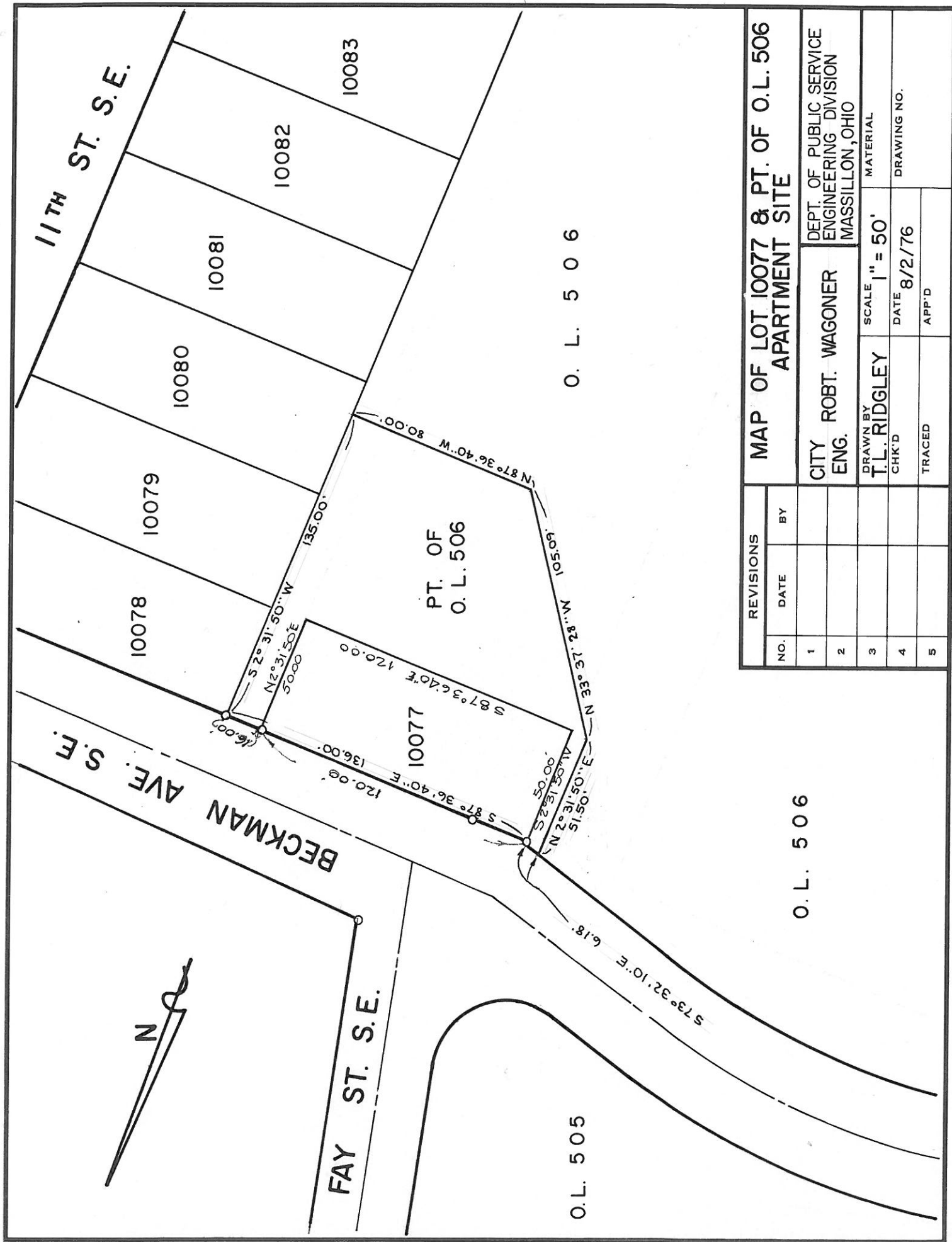
Thence N2°31'50"E, a distance of 51.50' to the south line of Beckman Ave., S.E.;

Thence S73°32'10"E along the south line of Beckman Ave., S.E., a distance of 6.18' to an iron pin at the northwest corner of Lot No. 10077;

Thence S2°31'50"W along the west line of Lot No. 10077, a distance of 50.00' to a point;

Thence S87°36'40"E along the south line of Lot No. 10077, a distance of 120.00' to the southeast corner of Lot No. 10077;

Thence N2°31'50"E along the east line of said Lot No. 10077, a distance of 50.00' to the true place of beginning, containing 0.241 acres of O.L. 506.



REVISIONS		BY	
NO.	DATE	NO.	DATE
1			
2			
3			
4			
5			

MAP OF LOT 10077 & PT. OF O.L. 506
APARTMENT SITE

CITY ROBT. WAGONER
ENG. DEPT. OF PUBLIC SERVICE
ENGINEERING DIVISION
MASSILLON, OHIO

DRAWN BY T.L. RIDGLEY	SCALE 1" = 50'	MATERIAL
CHK'D	DATE 8/2/76	DRAWING NO.
TRACED	APP'D	