

D E S C R I P T I O N

Pt. Lot 13042

Known as and being part of Lot No. 13042 in the City of Massillon, Massillon Township, Stark County, Ohio, and being more fully described as follows:

Beginning at the Northwest corner of Lot No. 13042, said corner also being the true place of beginning of the tract herein described; said corner also being the Southeast corner of the intersection of Lincoln Way West and 1st Street S.W.;

Thence N69°19'40"E along the south right-of-way line of Lincoln Way West, a distance of 44.50' to a point;

Thence S20°41'10"E, a distance of 166.80' to a point, said point being on the south property line of Lot No. 13042;

Thence S69°19'40"W along the south property line of Lot No. 13042, a distance of 44.06' to a point, said point being the southwest corner of Lot No. 13042 and being on the east right-of-way line of 1st Street S.W.;

Thence N20°50'30"W along the east right-of-way line of 1st Street S.W., a distance of 166.80' to the true place of beginning of the tract herein described and containing 0.1695 acres and subject to Storm Sewer easements of the existing Storm Sewer located on the tract herein described.

Storm Sewer Easement

Pt. Lot 13042

Commencing at the Northwest corner of Lot No. 13042, thence N69°-19'40"E along the south right-of-way line of Lincoln Way West, a distance of 30.50' to the true place of beginning of the easement herein described:

Thence continuing along said south right-of-way line, a distance of 14.00' to a point;

Thence S20°41'10"E a distance of 166.80' to a point, said point being on the south line of Lot No. 13042;

Thence S69°-19'40"W along said south line of Lot No. 13042, a distance of 25.00' to a point;

Thence N20°41'10"W, a distance of 89.00' to a point;

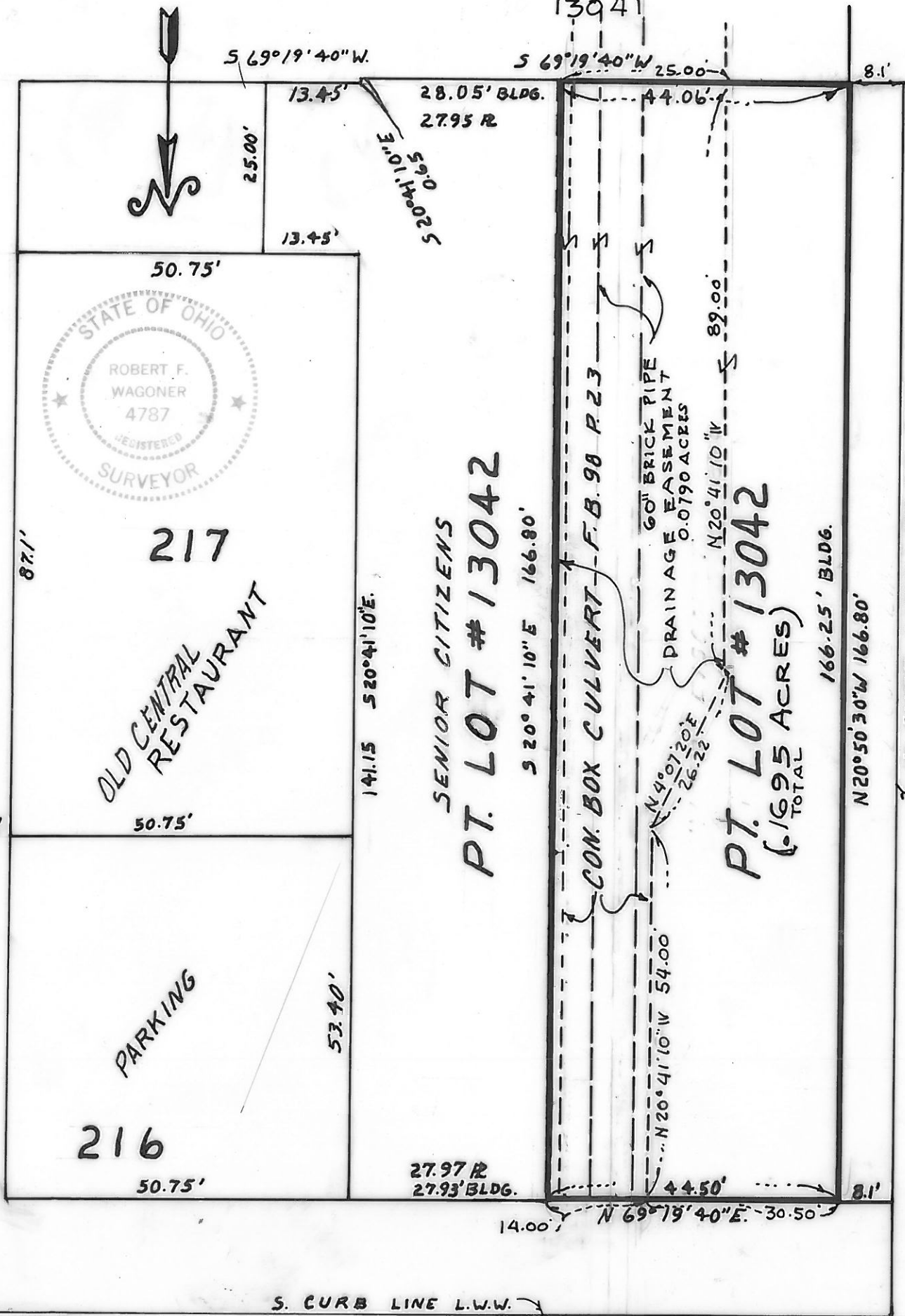
Thence N4°-07'20"E, a distance of 26.22' to a point;

Thence N20°41'10"W, a distance of 54.00' to the true place of beginning of the easement herein described containing 0.0790 acres.

EXCHANGE ST. S.W.

W. CURB LINE EXCHANGE ST. S.W.

E. CURB LINE 1<sup>ST</sup> ST. S.W.  
1<sup>ST</sup> ST. S.W.



LINCOLN WAY WEST

SURVEY OF LOT # PT. 13042  
SCALE 1"=20' DATE 3-13-84