

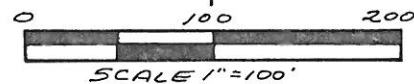
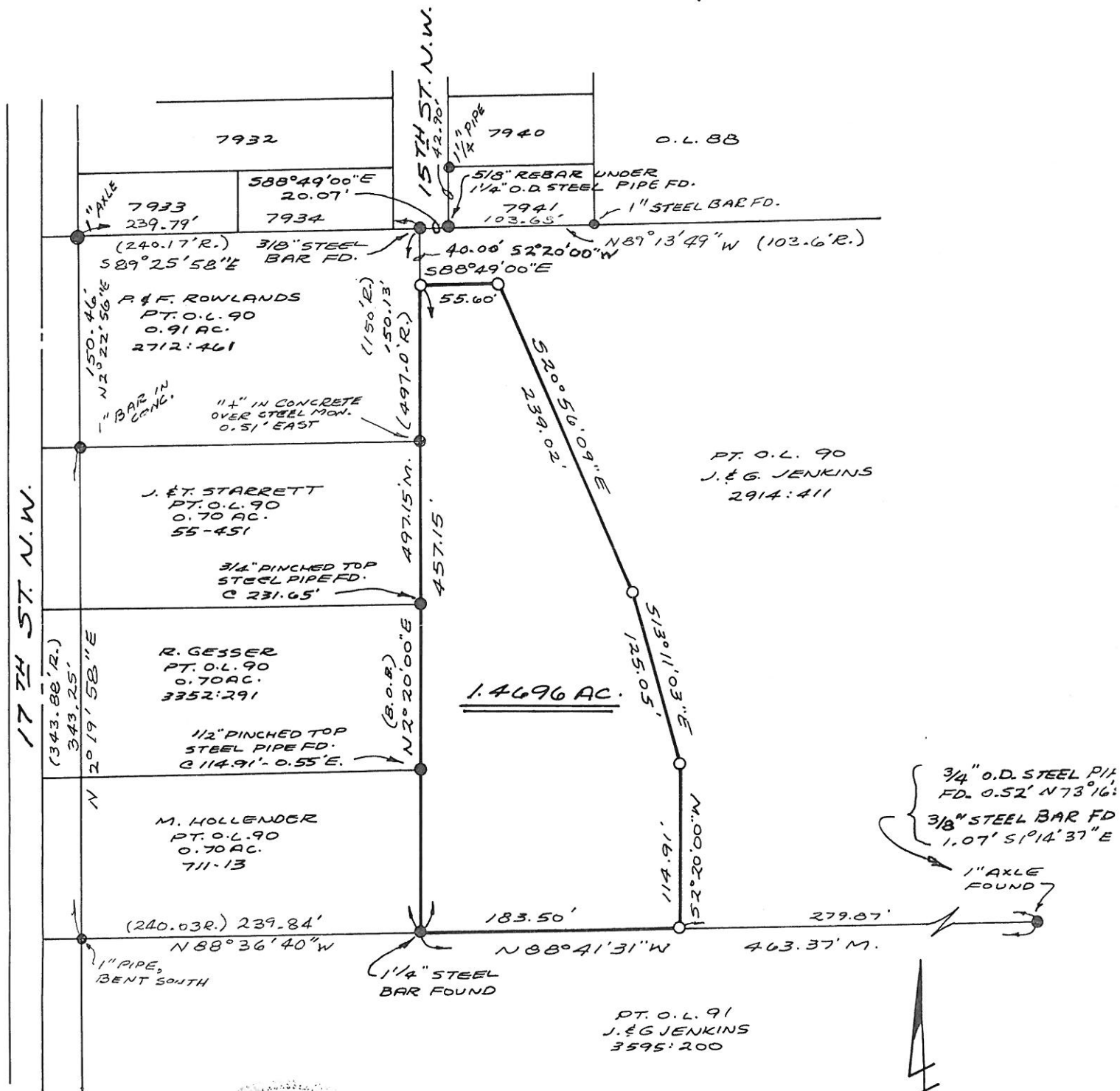
DESCRIPTION OF 1.4696 ACRE PARCEL

Situated in the State of Ohio, County of Stark, City of Massillon and being part of a 5.51 acre Part of Out Lot 90 remaining from an original 8.52 acres, now or formerly owned by J. and G. Jenkins as recorded in Stark County Deed Records Volume 2321, Page 483, and which part is more particularly bounded as follows:

Beginning at a one and 1/4 inch steel bar found at the southwest corner of said 5.51 acre Part of Out Lot 90; thence along the west line of said 5.51 acre Part of Out Lot and the east lines of a 0.70 acre Part of Out Lot 90, now or formerly owned by M. Hollender as recorded in Stark County Official Records Volume 711, Page 13, a 0.70 acre Part of Out Lot 90, now or formerly owned by R. Gesser as recorded in Stark County Deed Records Volume 3352, Page 291, a 0.70 acre Part of Out Lot 90, now or formerly owned by J. and T. Starrett as recorded in Stark County Official Records Volume 55, Page 451, a 0.91 acre Part of Out Lot 90, now or formerly owned by P. and F. Rowlands as recorded in Stark County Deed Records Volume 2712, Page 461, N2°20'00"E and passing by a 1/2 inch pinched top steel pipe found at 114.91 feet 0.55 feet east and through a 3/4 inch pinched top steel pipe found at 231.65 feet, for a total distance of 457.15 feet to a 1/2 inch steel bar set (a 3/8 inch steel bar was found at the northwest corner of said 5.51 acre Part of Out Lot 90, N2°20'00"E 497.15 feet from the beginning of this course); thence S88°49'00"E for a distance of 55.60 feet to a 1/2 inch steel bar set; thence S20°56'09"E for a distance of 239.02 feet to a 1/2 inch steel bar set; thence S13°11'03"E for a distance of 125.05 feet to a 1/2 inch steel bar set; thence S2°20'00"W for a distance of 114.91 feet to a 1/2 inch steel bar set; thence along the south line of said 5.51 acre part of Out Lot 90 and the north line of Part of Out Lot 91, now or formerly owned by J. and G. Jenkins, as recorded in Stark County Deed Records Volume 3595, Page 200, N88°41'31"W for a distance of 183.50 feet to the point of beginning (a one inch axle was found S88°41'31"E 297.87 feet from the beginning of this course) and containing 1.4696 acres as surveyed under the supervision of Richard C. Friedl, P.S. 5938, of Poggemeyer Design Group, Inc. in March of 1991. The basis of bearings for this description was taken from a map of survey by R.H. Hunsinger, dated June 1956.



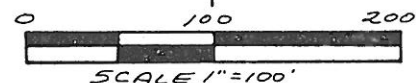
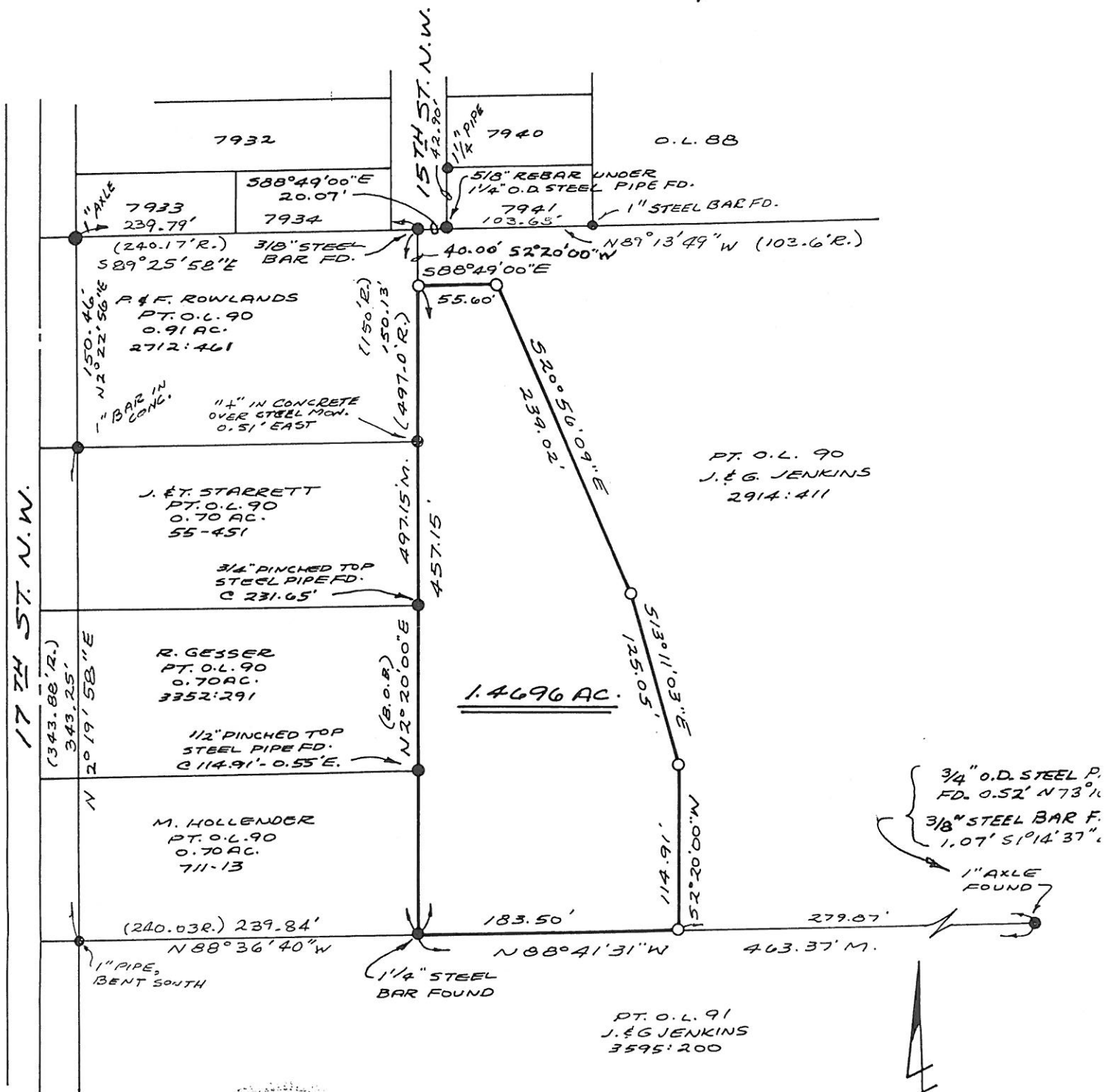
MAP OF SURVEY  
1. 4696 ACRE PARCEL  
FROM 5.51 AC. PART OF  
O.L. 90 OWNED BY J. & G.  
JENKINS AS RECORDED  
IN VOL. 2414, PG. 411  
CITY OF MASSILLON  
STARK COUNTY, OHIO



- 1/2" STEEL BAR SET WITH CAP MARKED "POGGEMEYER DESIGN GROUP"
- R. RECORD DISTANCE
- M. MEASURED DISTANCE

BASIS OF BEARINGS TAKEN FROM  
A MAP OF SURVEY BY R. H.  
HUNSINGER, DATED JUNE 1956.

MAP OF SURVEY  
1.4696 ACRE PARCEL  
FROM 5.51 AC. PART OF  
O.L. 90 OWNED BY J. & G.  
JENKINS AS RECORDED  
IN VOL. 2414, PG. 411  
CITY OF MASSILLON  
STARK COUNTY, OHIO



- 1/2" STEEL BAR SET WITH CAP MARKED "POGGEMEYER DESIGN GROUP"
- R. RECORD DISTANCE
- M. MEASURED DISTANCE

BASIS OF BEARINGS TAKEN FROM