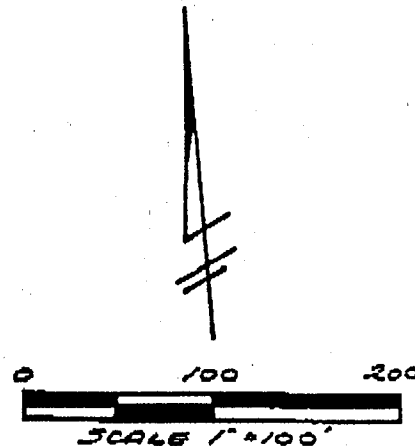
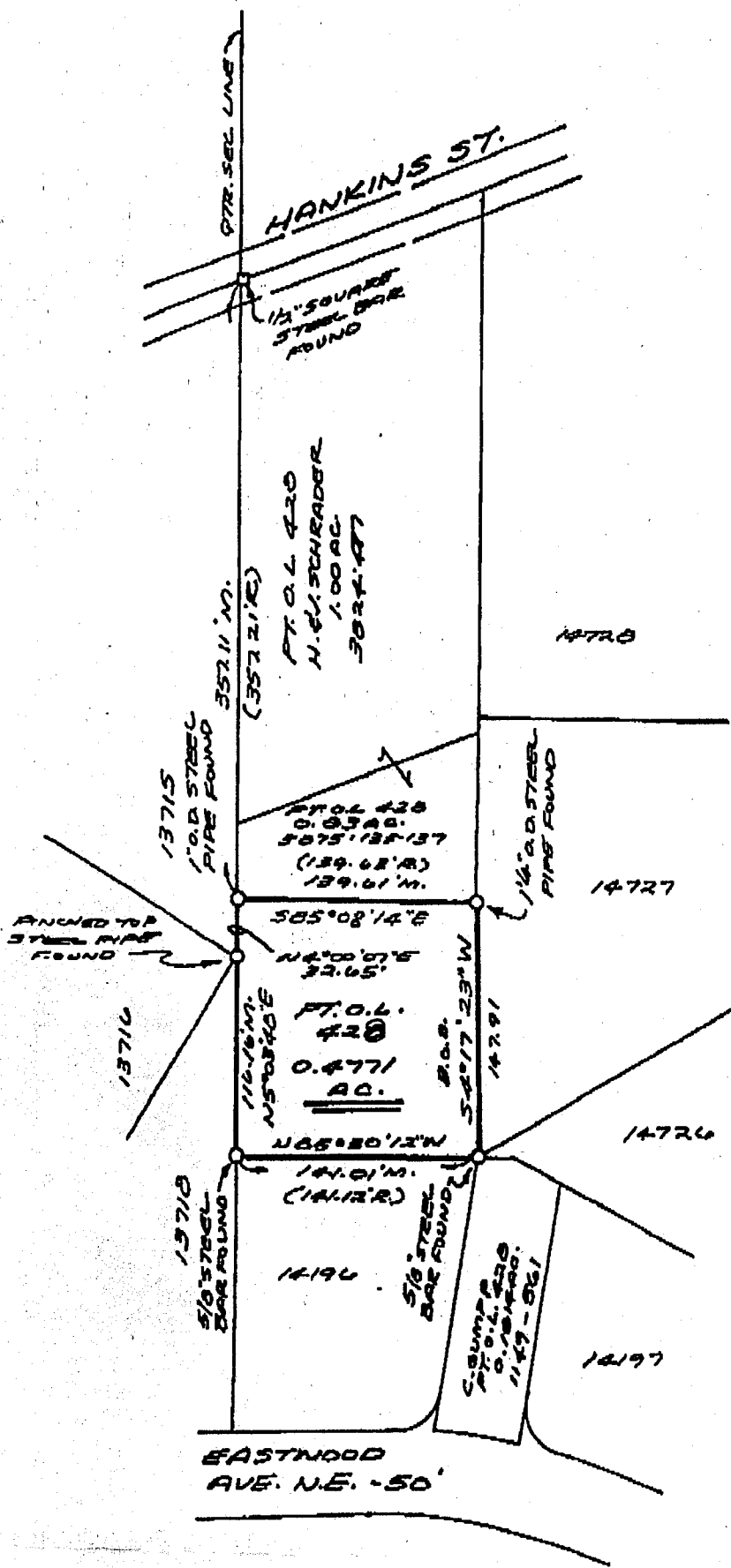


MAP OF SURVEY  
0.4771 ACRES PARCEL  
PART OF O.L. 420  
CITY OF MASSILLON  
STARK COUNTY, OHIO



R. RECORD DISTANCE  
M. MEASURED DISTANCE

BASIS OF BEARINGS -  $S 4^{\circ}17'23\"E$   
AS WEST LINE OF LOT 14727 AS  
TAKEN FROM RECORD PLAT OF  
AMBERWOOD AS RECORDED  
IN P.B. 57, PG. 124.

FROM DEED REF.  
CHARLES F. GUMPP  
770-599



any information or data on this drawing is not intended to be  
uitable for reuse by any person, firm or corporation or any  
thers on extensions of this project or for any other use on  
ny other project. Any reuse without written verification and  
daptation by the Engineer, Architect or Surveyor for the  
pecific purpose intended will be at the users sole risk and  
ithout liability or legal exposure to the Engineer, Architect  
r Surveyor.

I hereby declare that this plat accurately represents a survey  
made under my supervision in accordance with the Minimum Standard  
for Boundary Surveys in the State of Ohio per Chapter 4733-37 of  
the Ohio Administrative Code.

*Richard C. Friedl* 5-27-92  
Richard C. Friedl, P.S. #5938 Date



POGGEMEYER DESIGN GROUP  
ENGINEERS-ARCHITECTS-SURVEYORS  
5440 FULTON DR. N.W. SUITE 211  
CANTON, OHIO 44718  
PHONE: (216) 688-8808

2541

y  
p  
e

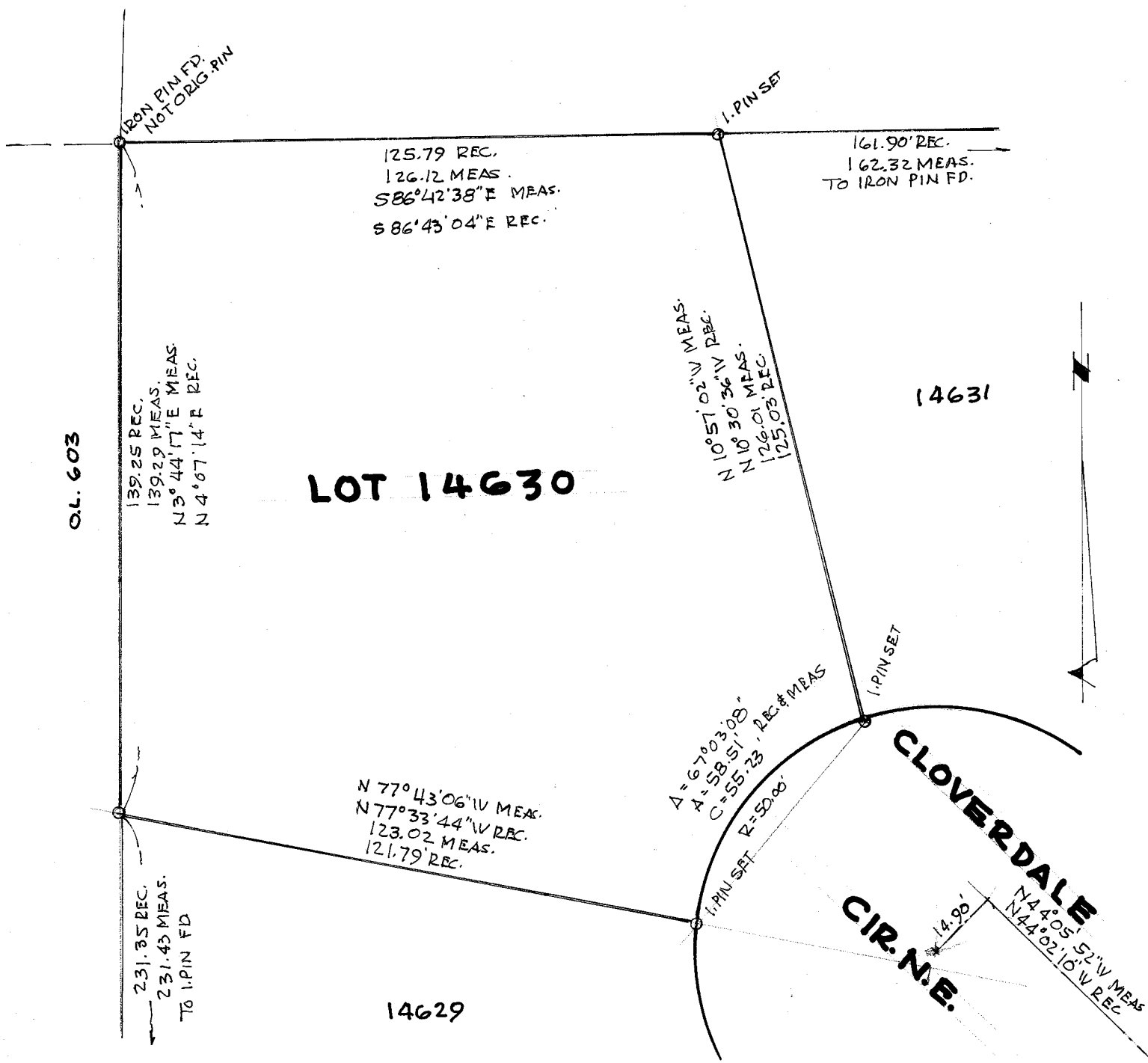
1a  
2.

m  
ic

mir  
v  
Sta  
m  
3.C

NE  
A RT  
CO  
18

24  
18



# SURVEY LOT 14630

MASSILLON, STARK COUNTY, OHIO

SCALE 1"=30' JUNE, 1992 ROBT F. WAGONER, REG. SUR. 4787

REFERENCE: P.B. 56 PG. 86

NOTE: IRON PIN @ N.W. CORNER 14630, NOT ORIG. I.PIN, THIS PIN WAS RESET BY SOMEONE AND USED FOR SURVEYS TO THE WEST & EAST.

DESCRIPTION OF 0.4771 ACRES

Situated in the State of Ohio, County of Stark, City of Massillon and being Part of Out Lot 428 and which part is more particularly bounded as follows:

Beginning at a 5/8 inch steel bar found at the northeast corner of Lot 14196

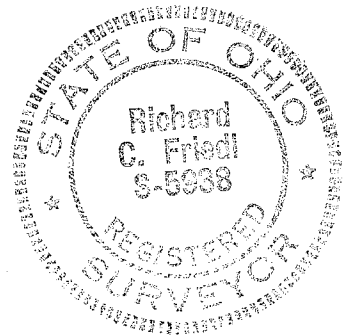
thence N85°30'12"W for a distance of 141.01 feet to a 5/8 inch steel bar found at the northwest corner of Lot 14196;

thence along the east line of Lot 13718, N5°03'48"E for a distance of 116.16 feet to a pinched top steel pipe found;

thence along the east line of Lot 13715, N4°00'07"E for a distance of 32.65 feet to a one inch O.D. steel pipe found;

thence along the south line of a 0.83 acre part of D.L. 428, now or formerly owned by H. and J. Schrader as recorded in Deed Volume 3875, Pages 135-137, S85°08'14"E for a distance of 139.61 feet to a 1-1/4 inch O.D. steel pipe found;

thence along the west line of Lot 14727, S4°17'23"W for a distance of 147.91 feet to the point of beginning and containing 0.4771 of an acre as surveyed under the supervision of Richard C. Friedl, P.S. 5938, of Poggemeyer Design Group, Inc. in March 1990 and May 1992. The prior deed reference is in the name of Charles F. Gumpp, which is recorded in Deed Volume 776, Page 599. The basis of bearings in this description is the west line of Lot 14727 which was taken from the record plat of Amberwood as recorded in Plat Book 57, Page 124.

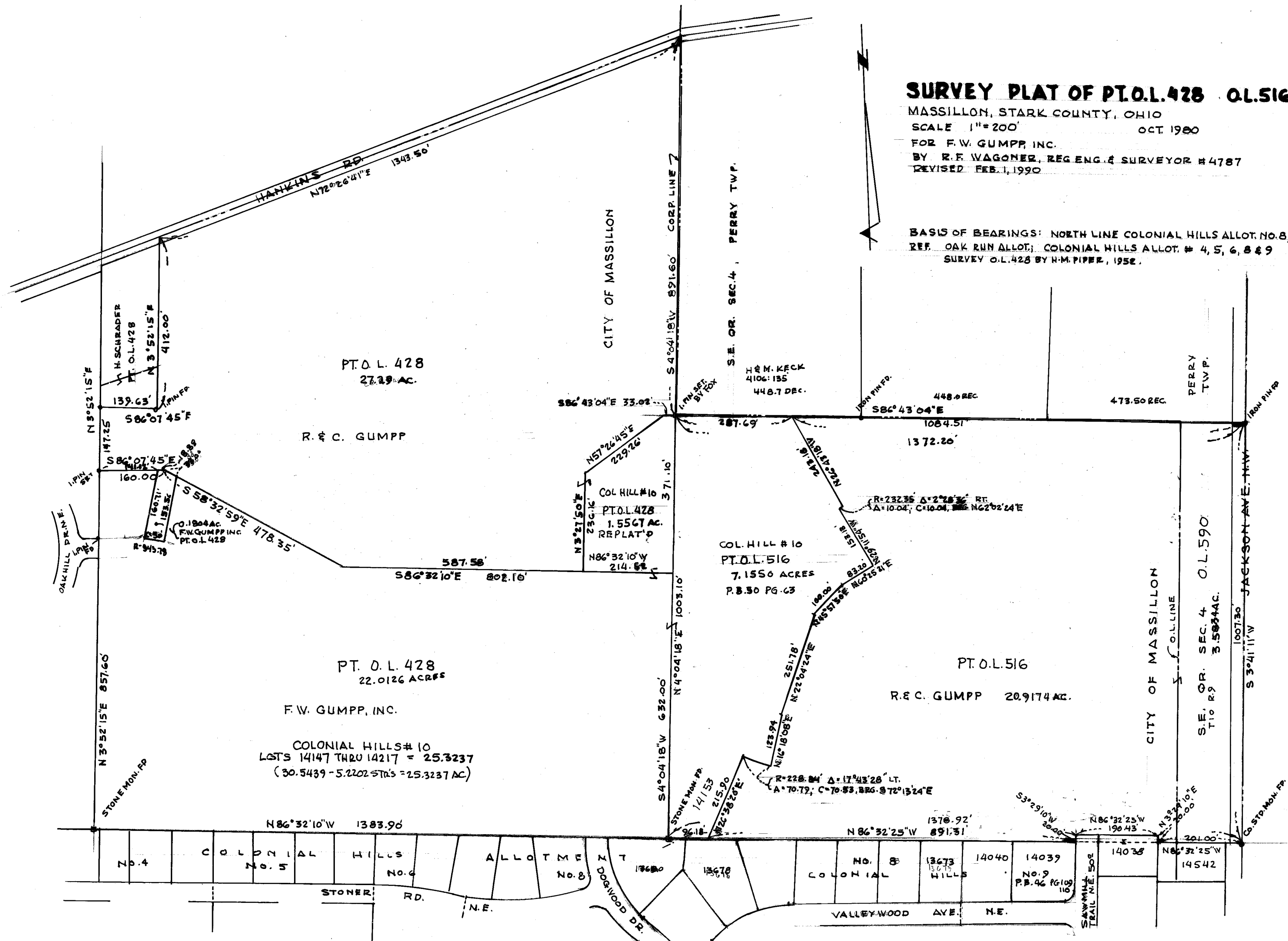


MASSILLON, STARK COUNTY, OHIO

OCT. 1980

BY R.F. WAGONER, REG. ENG. & SURVEYOR #4787  
REVISED FEB. 1, 1990

BASIS OF BEARINGS: NORTH LINE COLONIAL HILLS ALLOT. NO. 8, N86°32'10"W  
REF. OAK RUN ALLOT. COLONIAL HILLS ALLOT. # 4, 5, 6, 8 & 9  
SURVEY O.L. 428 BY H.M. PIPER, 1952.



## O.L. 590 &amp; PART O.L. 516

Known as and being O.L. 590 and Part of O.L. 516 in the City of Massillon, Stark County, Ohio, and being more fully described as follows:

The true place of beginning being a County monument at the southeast corner of O.L. 590; said point being the southeast corner of the Southeast Quarter Section 4, T-10, R-9;

Thence N86°32'25"W along the south line of said O.L. 590 and O.L. 516, a distance of 201.00' to an iron pin;

Thence N3°29'10"E along the east line of Lot No. 14038, a distance of 20.00' to an iron pin;

Thence N86°32'25"W along the north line of Lot No. 14038 and the north line of Colonial Hills No. 9A as recorded in Plat Book 46, pages 109 and 110, Stark County records, a distance of 190.43' to a point;

Thence S3°29'10"W along the west line of Sawmill Trail N.E., a distance of 20.00' to the northeast corner of Lot No. 14039 and the south line of O.L. 516;

Thence N86°32'25"W along the south line of O.L. 516, a distance of 891.31' to an iron pin at the southeast corner of Lot No. 14153, in Colonial Hills No. 10, as recorded in Plat Book 50, page 63;

Thence the following courses along the easterly line of Colonial Hills Allotment No. 10;

N26°38'20"E, a distance of 215.90' to an iron pin;

On a curve to the left, with a radius of 228.84', a delta of 17°43'28", an arc distance of 70.79', and a chord distance of 70.53', bearing S72°13'24"E to an iron pin;

N16°18'08"E, a distance of 123.94' to a point;

N22°04'24"E, a distance of 251.78' to an iron pin;

N45°57'50"E, a distance of 100.00' to a point;

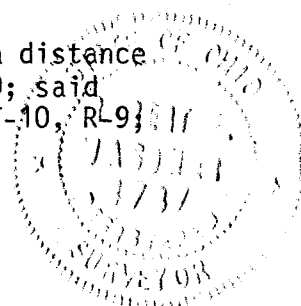
N60°25'21"E, a distance of 83.20' to a point;

N29°11'54"W, a distance of 153.13' to a point;

On a curve to the right with a radius of 232.35', a delta of 2°28'36", an arc distance of 10.04', and a chord distance of 10.04' bearing N62°02'24"E to a point;

N26°43'18"W, a distance of 243.18' to a point on the north line of O.L. 516; said point also being the northeast corner of Lot No. 14631;

Thence S86°43'04"E along the north line of O.L. 516 and O.L. 590, a distance of 1084.51' to an existing iron pin at the northeast corner of O.L. 590; said point also being on the east line of the Southeast Quarter Section 4, T-10, R-9;



Continuation of Survey of O.L. 590 and Part O.L. 516

Thence S3°41'11"W along said east line of O.L. 590, a distance of 1007.30' to the true place of beginning containing 3.5843 acres of O.L. 590 and 20.9174 acres of O.L. 516.

