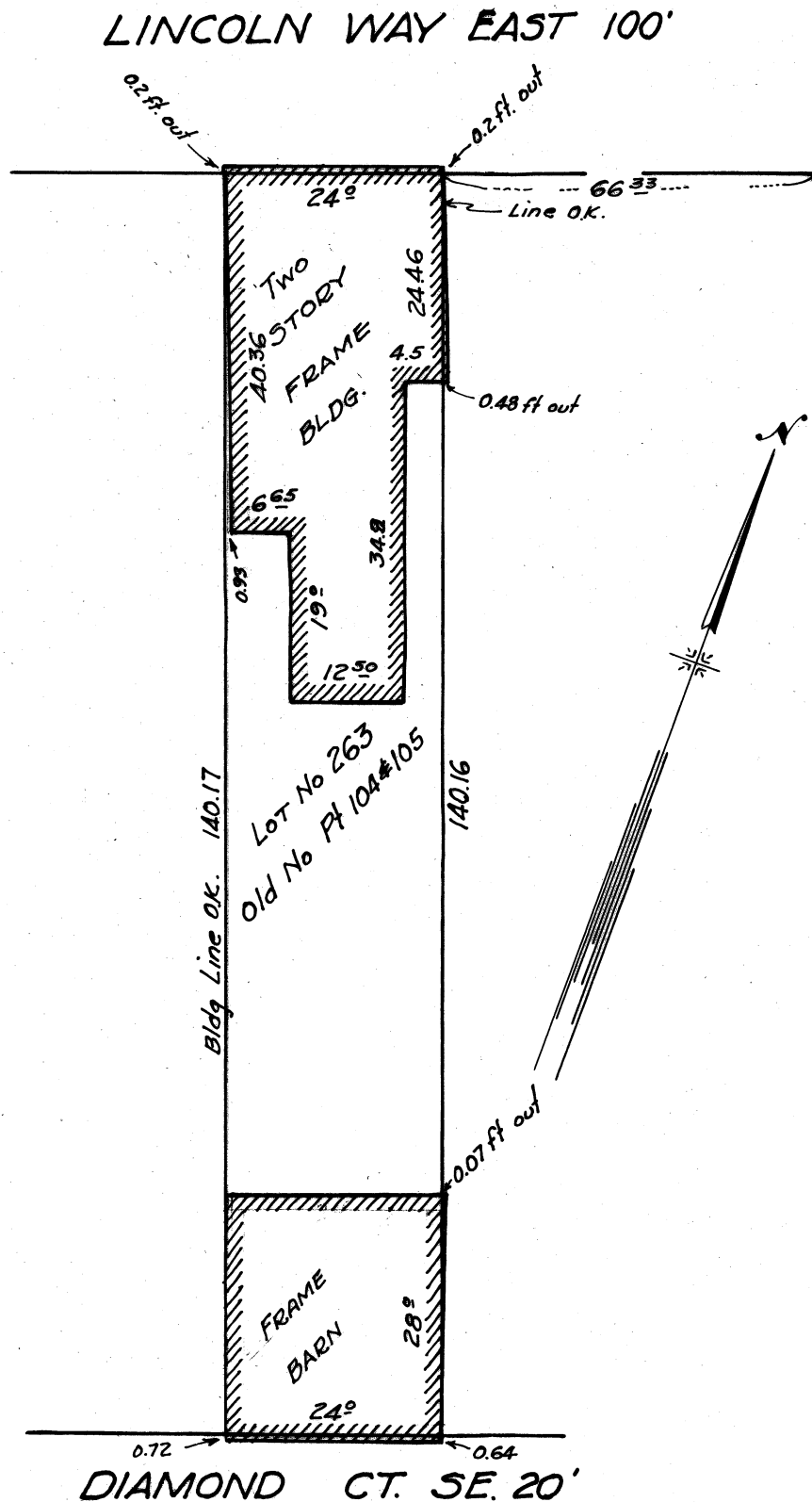


N.W.

285

604

SURVEY OF LOT # 263
CITY OF MASSILLON
SEPT 25th 1931 SCALE 1"=20'
GEO. C. WALLACE



I hereby certify that the above is a true and correct plat of a survey made by me on the 23rd day of Sept. 1931, of lot # 263 in the City of Massillon, Ohio, according to the present schedule of lot nos., and that there are no encroachment except as shown.

Geo. C. Wallace
CIVIL ENGINEER