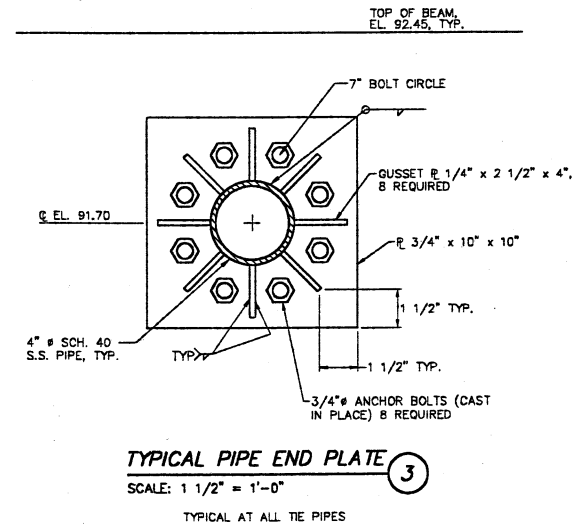
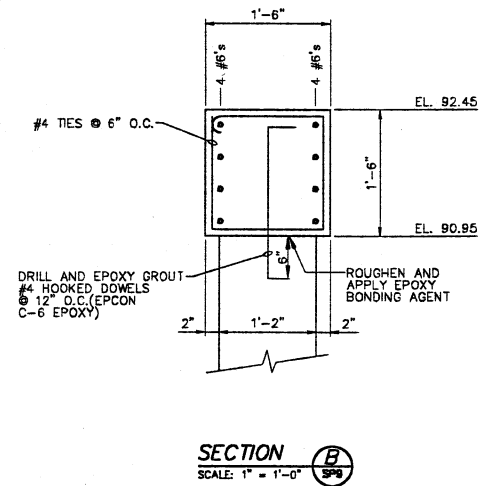
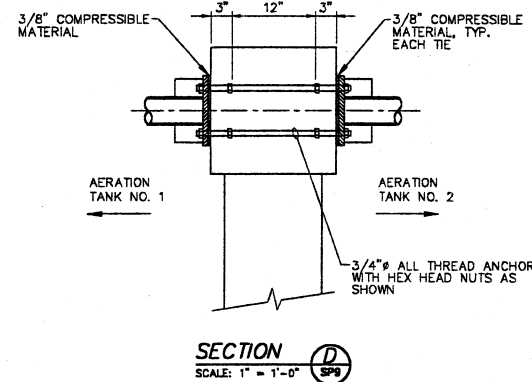
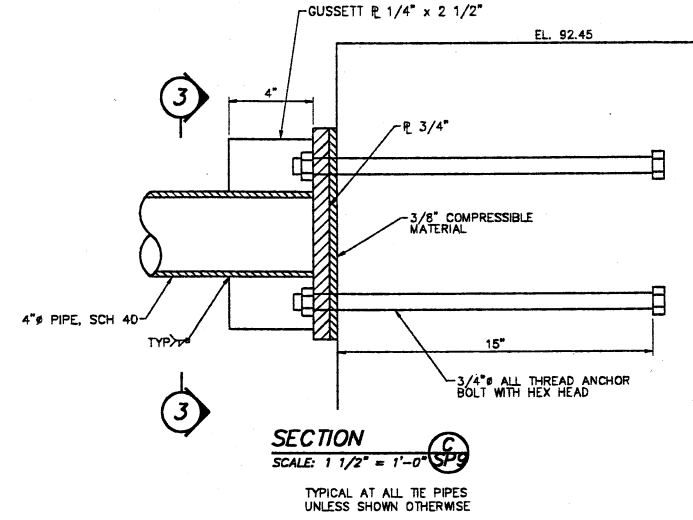
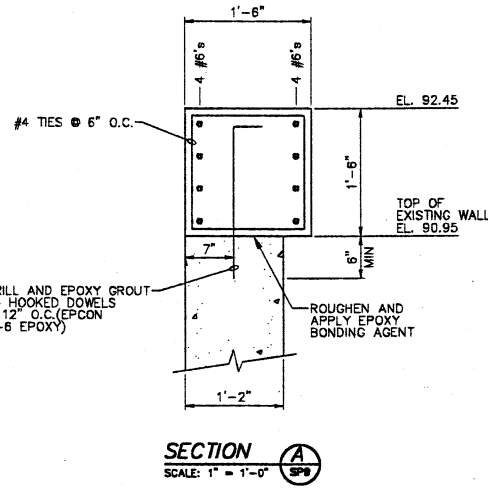


DETAIL 1
SCALE: 1" = 1'-0"

TYPICAL AT OUTER WALLS, AERATION TANK NO. 1, NO. 3 EXCEPT AS NOTED

DETAIL 2
SCALE: 1" = 1'-0"

AS NOTED COMMON WALL BETWEEN AERATION TANK NO. 1 AND NO. 2



NOTES:

- ALL TIE PIPES INCLUDING PIPE PLATES, AND ANCHOR BOLTS SHALL BE FABRICATED FROM TYPE 304 OR TYPE 316 STAINLESS STEEL.
- ANCHOR BOLTS SHALL BE THREADED THEIR ENTIRE LENGTH AND SHALL HAVE A HEX HEAD EMBEDDED IN CONCRETE.
- THE PIPE LENGTHS SHALL BE DETERMINED WITH AERATION TANKS IN OPERATION. PIPES SHALL BE FABRICATED FOR A 60° FARENHEIT NOMINAL TEMPERATURE. FABRICATION DIMENSIONS SHOULD BE ADJUSTED TO ALLOW FOR TEMPERATURE VARIATION FROM NOMINAL DURING INSTALLATION.
- TIE PIPE IS TO BE INSTALLED IN: TANK NUMBER 1 PRIOR TO EMPTYING TANK NUMBER 2.

THIS DRAWING IS AN INSTRUMENT OF SERVICE OWNED BY CONSOLIDATED TECHNOLOGIES, INC. (CTI), WHICH SHALL BE DEEMED THE AUTHOR AND COMMON LAW RIGHTS, INCLUDING COPYRIGHTS, IN THIS DRAWING SHALL NOT BE TRANSFERRED, REPRODUCED, COPIED, OR USED FOR ANY OTHER PURPOSE, OR PROJECT WITHOUT THE WRITTEN PERMISSION OF CONSOLIDATED TECHNOLOGIES, INC. UNAUTHORIZED USE OR REUSE OF THIS DRAWING OR PORTIONS THEREOF.

NO.	DESCRIPTIONS	DATE	BY	APP'D

DESIGNED BY: RLP
DRAWN BY: AMF
CHECKED BY: WAD
APPROVED BY: WAD

ENVIRONMENTAL, INC.
WATER AND EARTH SCIENCES
UNIONTOWN, OHIO

CTI

CITY OF MASSILLON, OHIO
WWTP UPGRADE 2000

AERATION TANK - WALL STRENGTHENING DETAILS AND SECTIONS

JOB NO. E9031
DATE 08/13/01
SCALE AS NOTED
SHEET SP12